

# Metronome™

## INSTALLATION GUIDE

Tel 800-668-9318  
Tel 416-298-5700  
Fax 416-298-9535  
mail@nienkamper.com  
www.nienkamper.com



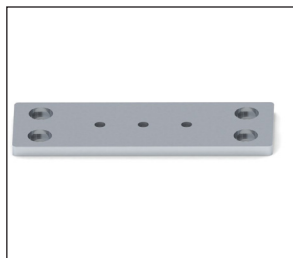
5/16"-18 x 1-3/4" cap screw



Base mounting plate  
2-1/4" x 1-1/4" x 1/4"



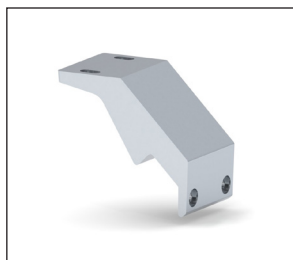
5/16"-18 x 7/8" socket button  
head screw



Mid mounting plate  
6" X 2" X 1/4"



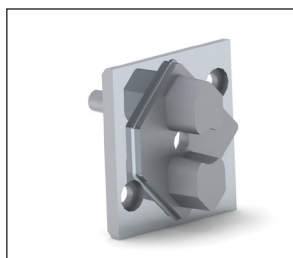
1/4"-20 x 3/4" socket button head  
screw



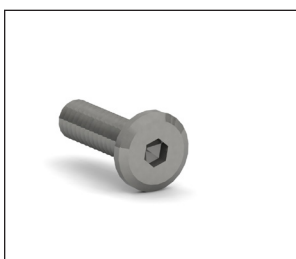
Outrigger Bracket



1/4"-20 x 1/2" socket button head  
screw



Mid base splice  
4 required per base



1/4"-20 x 7/8" Chicago bolt

## LOCATE BASES



Locate bases and rails. Stand bases upside down.

## RAILS TO END BASE

1 2



Attach rails to end base using 5/16"-18 x 1-3/4" cap screw. Align the groove in the rail towards the center of the base.

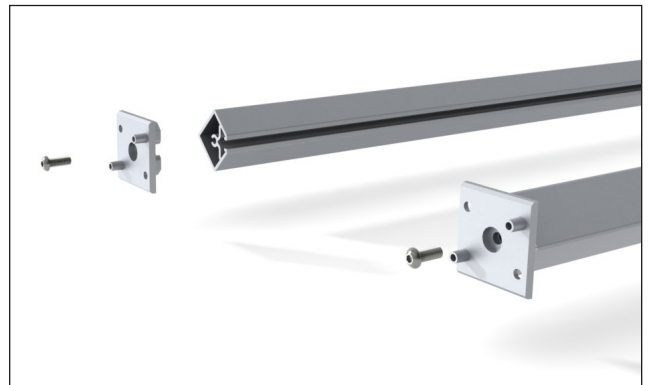
## MID BASE COMPONENTS



Locate the Mid base and the Mid base splice.  
(4) mid base splices, (4) 5/16-18 x 7/8" button head cap screw, and (8) 1/4-20 x 3/4" button head cap screw are required per mid base.

## MID BASE SPLICE TO RAILS

3 4



Attach the Mid splice to the Support rail with the 5/16-18 x 7/8" button head cap screw.

## RAILS TO MID BASE



Attach Mid splice and rail to the Mid base with the 1/4-20 x 3/4" button head cap screw.

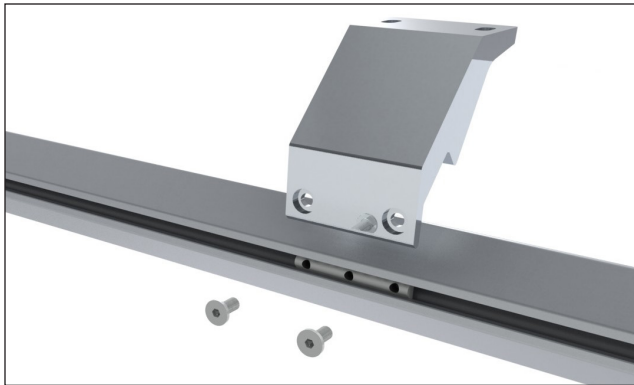
## STAND BASES UP

5 6



Using one person at each base stand base and rail assembly right side up.

## OUTRIGGERS

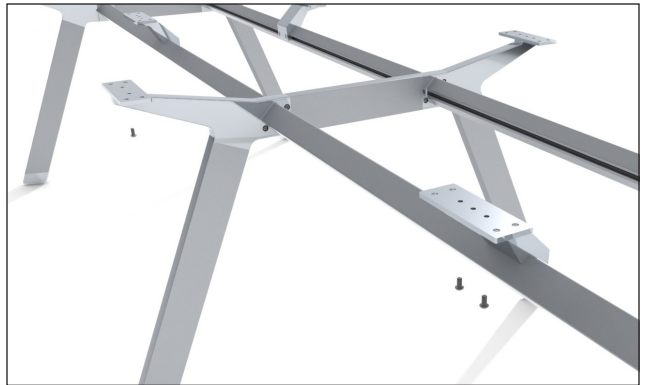


Attach outrigger to support rail with 1/4"-20 x 5/8" Chicago bolts

## POSITIONING RAILS

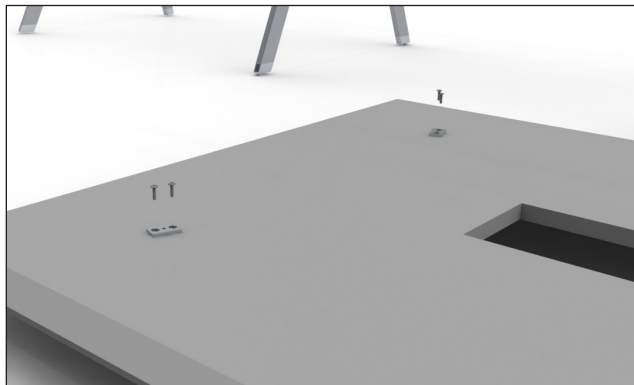
7

8



Attach mid bracket to the Outrigger using 1/4"-20 x 1/2" socket button head screw.

## MOUNT PLATES TO TOP

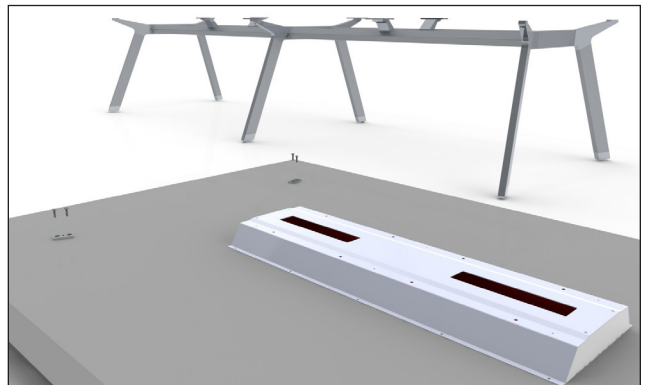


Place worksurface upside down on a clean blanket. Attach Base mounting plate 2-1/8" x 1-1/4" x 1/4" to the underside of the worksurface with (2) 1/4-20 x 7/8" Chicago bolts.

## POWER TROUGH

9

10



Place Power trough face down in the open of the worksurface. Attach the Power trough to the top with #8 x 3/4" wood screws.

## BASE TO WORKSURFACE

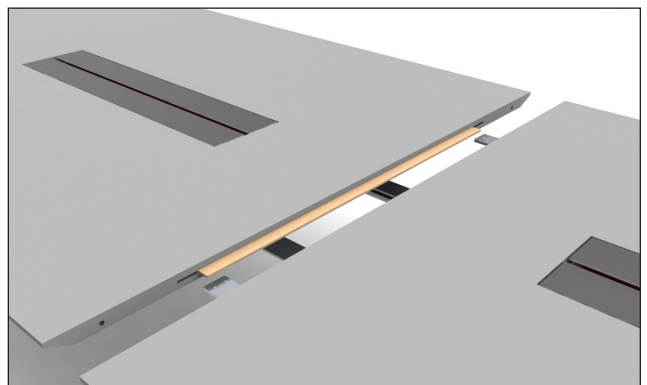


Attach the end base to the worksurface with 1/4-20 x 1/2" cap screw. The mid base and Outrigger attach to the worksurface using 1/4-20 x 7/8" Chicago bolts.

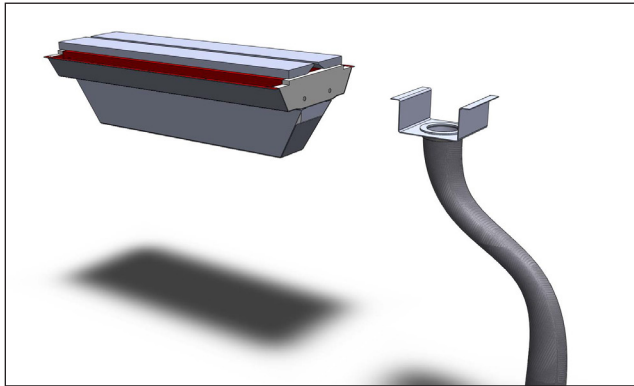
## SPLINE

11

12

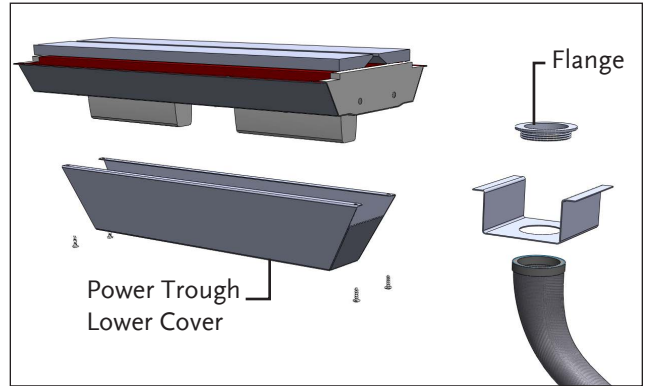


Use splines and tight joints at all seams.



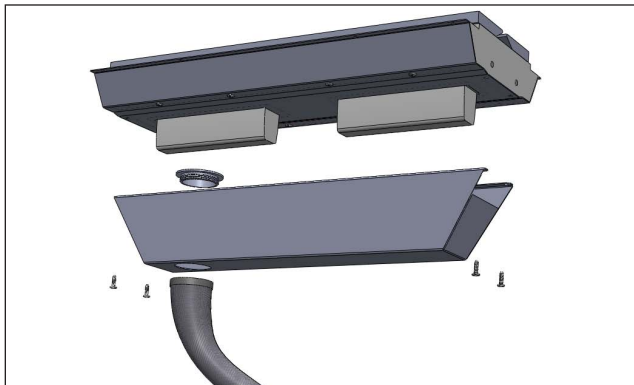
The cable conduit can be mounted to the underside of the top or directly to the Power trough cover. Cable conduit comes assembled with a bracket to mount it directly to the underside of the top.

13 14



Remove the lower cover of the power trough by loosening 4 Chicago bolts. Remove the steel U shaped bracket from the conduit by unscrewing the aluminum flange. The flange is hand tightened and does not require any tools to remove.

## CONDUIT ON TROUGH



15

There is a hole in the power trough lower cover. Place the conduit flange in the hole and align with the conduit. Hand tighten until snug.