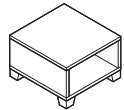


# Jenny™ Coffee and End Tables

turnstone®



Coffee Table

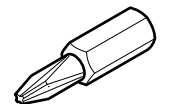
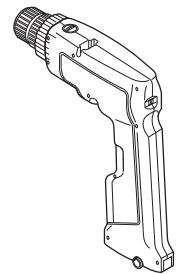
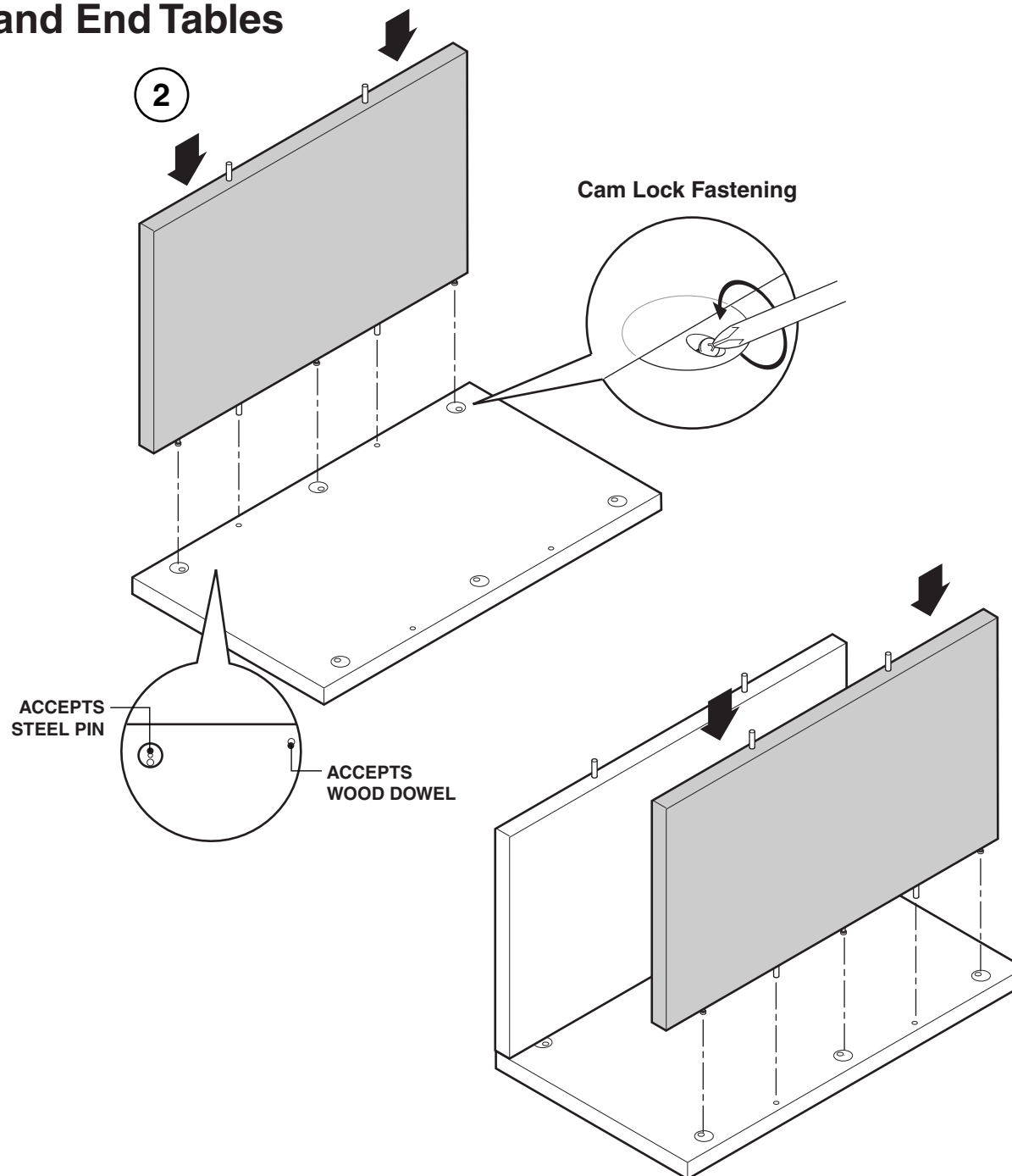


End Table

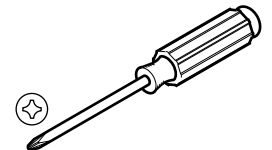
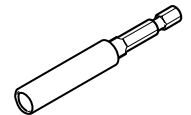
**1.** Lay top upside down on a clean, scratch resistant surface.

**2.** Insert the steel pins into the cam lock fasteners, while simultaneously inserting the wood dowel pins into the pilot holes of the top and tighten with a phillips screwdriver.

Repeat for the other side.



PHILLIPS DRIVE



**3.** Insert the wood dowel pins into the pilot holes of the bottom (3a). Screw six (6) flat head screws through the countersunk clearance holes provided (3b).

**4.** Install block foot (4a) or metal foot (4b) into threaded insert with screw or stud.

**5.** Screw four (4) adjustable glides into the block foot of the bottom assembly.

