



OUTDOOR FURNITURE

ICONMODERN

ICONMODERN

The outdoors often played a vital role in allowing us to stay connected to our loved ones but also to our local communities during the pandemic. This need for connection to community is what inspired our custom outdoor furniture collection. Featuring a collaboration with fellow Chicago furniture maker, Zachary A. Design, the collection celebrates the vibrant Chicago maker community and pays homage to local craftsmanship.

Combining our signature wood and steel designs with Zachary A's unexpectedly light material blend of durable composites and powerful concrete, the collection exudes a neutral color palette that mimics its natural surroundings. Outdoor durability is mindfully weaved into each piece.

The collection brings people together through community, café and coffee tables, fire pit tables, and benches while our planters bring nature even closer for people to enjoy.





Community Tables
Cafe Tables
Coffee Tables
Laptop Tables
Fireplace Tables
Benches
Planters

Furniture Options

Community Tables

01. STEEL ANGLED



02. STEEL POST



03. WOOD POST



04. ZACHARY A DESIGN BLOCK



*furniture shown in ipe wood

Cafe Tables

01. STEEL POST



02. WOOD POST



*furniture shown in ipe wood

Laptop Tables

01. STEEL TOP



02. WOOD TOP



*furniture shown in ipe wood

Coffee Tables

01. ZACHARY A MILL STONE



02. WOOD POST



03. STEEL PANEL



04. STEEL POST



*furniture shown in ipe wood

Fireplace Tables

01. PANEL BASE IN STEEL



02. X-BASE IN STEEL



03. BOX BASE IN STEEL



30"x30"x14" -

04. PANEL BASE IN ALUMINUM



02. X-BASE IN ALUMINUM



03. BOX BASE IN ALUMINUM



Benches

01. ZACHARY A DESIGN BLOCK-STYLE



02. WOOD POST



03. ZACHARY A DESIGN T-STYLE



04. STRAP STYLE



*furniture shown in ipe wood

Planters

01. WOOD PANEL + STEEL TRELLIS



*furniture shown in ipe wood

02. WOOD PANEL + ZACHARY A



03. WOOD PANEL



04. ZACHARY A DESIGN

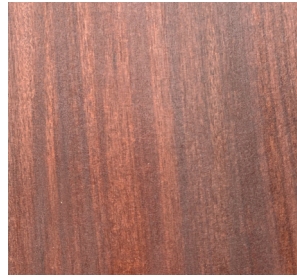


Specifications

Wood Species + Finishes



Cedar - Oil Finish



Ipe - Oil Finish



**Thermally Modified Ash
- Oil Finish**



Cedar - Unfinished

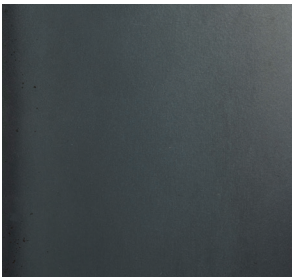


Ipe - Unfinished

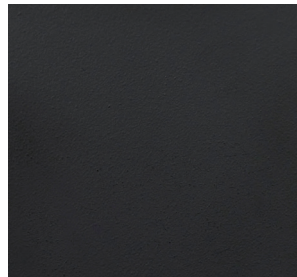


**Thermally Modified Ash
- Unfinished**

Steel Finishes



Clear



Black



Custom Color

Additional Information

-Table tops can be fabricated using any of the wood species shown here

-All species are rot-resistant and will grey if exposed to outdoor conditions

-Minimum two coats of outdoor oil is hand-applied to all sides of each part if oil finish is chosen

-Hot rolled steel bases can be finished in matte, gloss and textured finishes

-Steel is sandblasted and primed prior to powdercoating

-Powdercoat is a sustainable and durable outdoor-appropriate finish

Zachary A. Design

About

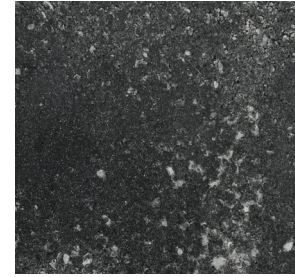
Zachary A. Design was formed by Zac Bitner with the idea of creating a modern material - blending durable composites with powerful concrete - to craft modern furniture in geometric & natural forms that are lighter in weight than traditional concrete or stone. Their guiding vision is to add function to art and to add the grace and meaning of art to the most humble functional objects.



Finish Color Options



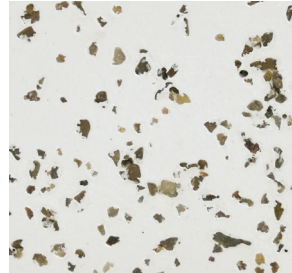
Aged Stone



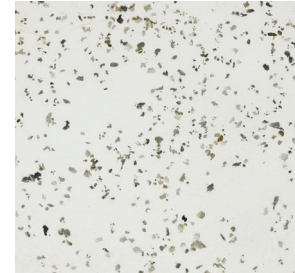
Coal Stone



Key Stone



Natural Stone



White Stone

SAMPLES OR QUOTE REQUESTS

Contact Craig Gronowski
craig@iconmodern.com | 224-515-6050

FOR MORE INSPIRATION, VISIT THE LINKS BELOW

Instagram - [@iconmodern](#)
www.iconmodern.com

Work with us!

ICONMODERN

