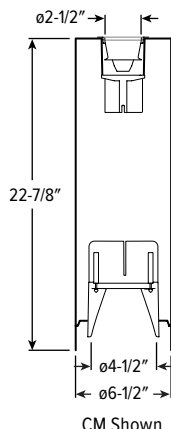


6CRDI dim to **WARM** 6.5" Direct/Indirect Cylinder – Round



CATALOG #: _____

TYPE: _____

PROJECT: _____

FEATURES

TrimLock®

- Wide range of lumen options for general illumination
- Smoothly accent walls and eliminate dark ceilings with direct and indirect lighting
- Create a comfortable, welcoming ambiance using warm dimming technology to provide intimate lighting
- Parallel the performance and style of the Williams downlight collection
- Precision illumination with 10° narrow to 65° wide optics
- Complement the architectural elements of any space with a multitude of housing, trim and cord finishes

SPECIFICATIONS

- HOUSING** – Extruded aluminum with die-cast aluminum accent ring.
- FINISH** – Polyester powder coat bonded to phosphate-free, multi-stage pretreated metal. All parts painted after fabrication to facilitate installation, increase efficiency, and inhibit corrosion.
- TRIMLOCK** – Innovative TrimLock® reflector retention system ensures trim remains secure.
- OPEN REFLECTOR** – Low-iridescent anodized aluminum. Clear semi-specular finish standard.
- LENSED TRIM** – Die-cast aluminum frame with micro-prismatic, tempered glass lens.
- ELECTRICAL** – High-performance Class 2 C.O.B. LED array. Modular quick-connect plug for easy field-connection of LED light assembly to driver. Reported L70>55,000 hours. Reported L90>55,000 hours. Estimated L70 = 200,000 hours.
- MOUNTING** – Cable or wall mount. Indoor applications only. Max weight 14-1/2 lbs.
- LISTINGS** –
 - cCSAus conforms to UL STD 1598 and UL STD 8750. Certified to CAN/CSA STD C22.2 No. 250.0. Suitable for damp locations.
- WARRANTY** – 5-year limited warranty, see hew.com/warranty.

ORDERING EXAMPLE: 6CRDI - TL - L24/9DWU/L24/9DWD - WHT - DIM - UNV - LW/LM - CS - TRIM OPTIONS - CM

HOUSING

SERIES	LUMEN PACKAGE (Example: L24/9DWU/L15/9DWD)	HOUSING FINISH ^[1]	CONTROL	VOLTAGE
6CRDI - TL TrimLock	Specify lumen packages: U for Uplight and D for Downlight LUMENS ^[2] COLOR U OR D	ALUM Silver sparkle aluminum	DIM Dimming driver, 0-10V	UNV 120-277V
	L8 800lm 9DW Dim to warm (95 CRI, 1800K – 3000K)	BLK Textured black	LUT Lutron Ecosystem enabled	347 347V
	L15 1,500lm	BRZ Textured bronze		
	L24 2,400lm	NKL Textured nickel		
		SLV Textured silver		
		WHT Textured white		

TRIM

TRIM TYPE AND DISTRIBUTION ^[3]
(Example Uplight/Downlight: LW/LM)

TRIM TYPE	DISTRIBUTION
Uplight	Uplight
O Open reflector with clear glass shield ^[8]	W 65° Wide
L Flush lens ^[9]	M 45° Medium ^[10]
	N 10° Narrow ^[11]
Downlight	Downlight
O Open reflector	W 65° Wide
L Flush lens	M 45° Medium
R Regressed lens	N 10° Narrow

REFLECTOR FINISH ^[4]

Downlight Open Trim Types
CS Clear semi-specular anodize
SG Satin-glow anodize
GD Gold anodize
CG Champagne gold anodize
PW Pewter anodize
SPC Clear specular anodize
RG Rose gold anodize
WH White texture powder coat
BL Black texture powder coat

Downlight Lens Trim Types
CS Clear semi-specular powder coat
WH White texture powder coat
BL Black texture powder coat
BZ Bronze texture powder coat
NK Nickel texture powder coat
SV Silver texture powder coat
AL Silver sparkle aluminum

TRIM OPTIONS

AD Diffuse acrylic lens ^[5]
PD Diffuse 1/8" polycarbonate lens ^[6]
TD Diffuse polycarbonate lens media at top of open reflector ^[7]

MOUNTING

MOUNTING TYPE ^[12]

CM Adjustable aircraft cable mount, 24" length standard Example: 24" cable = CM24 ^[13]
WM Wall mount

NOTES

- See page 4 for HOUSING FINISH DETAILS.
- Lumen output based on O trim type, W distribution and CS finish, 3000K/95CRI. Actual lumens may vary +/-5%, see page 2 for FIXTURE PERFORMANCE DATA
- Beam angle based on O Trim Type, WM Mounting Type and CS Reflector Finish. Trim Type affects beam angle. See page 2 for FIXTURE PERFORMANCE DATA.

- Specified for Downlight Trim Type only. See page 4 for REFLECTOR FINISH DETAILS.
- Not available with O Trim Type. Downlight only. W distribution only.
- Not available with O Trim Type. Downlight only. W distribution only.
- O Trim Type only. Downlight only.
- CS Reflector Finish standard. Other colors available, consult factory.
- Trim finish matches Housing Finish. Other colors available, consult factory.

- O Trim Type only when specified with WM Mounting Type.
- O Trim Type only.
- See page 4 for MOUNTING DETAILS.
- L15 lumen package max for uplight. 48" and 96" lengths available. Canopy painted white unless specified otherwise. Must specify cord. See page 4 for CORD OPTIONS.



6CRDI dim to WARM

6.5" Direct/Indirect Cylinder – Round

FIXTURE PERFORMANCE DATA

	DIST.	WATTAGE	DOWNLIGHT						UPLIGHT WALL MOUNT					UPLIGHT CABLE MOUNT				
			OPEN REFLECTOR		FLUSH LENS		REGRESSED LENS		WATTAGE	OPEN REFLECTOR		FLUSH LENS		WATTAGE	OPEN REFLECTOR		FLUSH LENS	
			DELIVERED LUMENS	EFFICACY (lm/W)	DELIVERED LUMENS	EFFICACY (lm/W)	DELIVERED LUMENS	EFFICACY (lm/W)		DELIVERED LUMENS	EFFICACY (lm/W)	DELIVERED LUMENS	EFFICACY (lm/W)		DELIVERED LUMENS	EFFICACY (lm/W)	DELIVERED LUMENS	EFFICACY (lm/W)
L8	W	14.0	862	62	670	48	678	48	14.0	731	52	677	48	14.8	585	40	785	53
	M	14.0	830	59	760	54	763	55	14.0	704	50	-	-	14.8	581	39	793	54
	N	14.0	800	57	765	55	769	55	14.0	678	48	-	-	14.8	482	33	-	-
L15	W	23.4	1511	65	1175	50	1188	51	23.4	1281	55	1187	51	23.3	1013	43	1359	58
	M	23.4	1455	62	1333	57	1337	57	23.4	1234	53	-	-	23.3	1016	44	1390	60
	N	23.4	1402	60	1242	53	1348	58	23.4	1189	51	-	-	23.3	769	33	-	-
L24	W	37.7	2228	59	1925	51	1945	52	37.7	1889	50	1945	52					
	M	37.7	2226	59	1995	53	1997	53	37.7	1887	50	-	-					
	N	37.7	2228	59	2197	58	2208	59	37.7	1889	50	-	-					

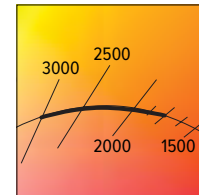
MULTIPLIER TABLES

	REFLECTOR FINISH	
	CATALOG NUMBER	CONVERSION FACTOR
O TRIM	CS	1.00
	SG ⁽¹⁾	0.92
	GD	0.93
	CG	0.96
	PW	0.86
	SPC	1.02
	RG	0.88
	WH ⁽¹⁾	0.89
R TRIM	BL ⁽¹⁾	0.47
	WH	1.00
	CS ⁽¹⁾	0.98
	BL ⁽¹⁾	0.79
	BZ ⁽¹⁾	0.76
	NK ⁽¹⁾	0.81
	SV ⁽¹⁾	0.81
	AL ⁽¹⁾	0.86

TRIM OPTIONS	
CATALOG NUMBER	CONVERSION FACTOR
AD	0.85
PD	0.85
TD	0.67

BEAM ANGLE

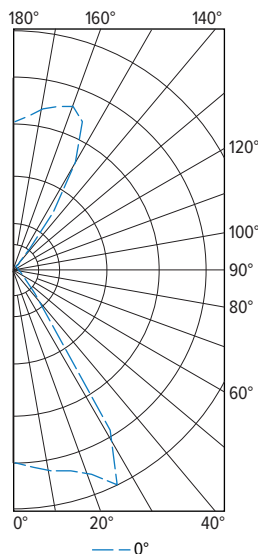
	TRIM TYPE					
	DOWNLIGHT			WM UPLIGHT		CM UPLIGHT
	OPEN	FLUSH	REGRESSED	OPEN	FLUSH	OPEN
W	65°	50°	50°	65°	50°	70°
M	45°	35°	30°	45°	35°	40°
N	10°	25°	25°	10°	25°	15°



- ¹ Distribution will also be affected, consult factory.
- 3000K CCT at 100% (full output) and 1800K CCT at 1% (full dim)
 - Photometrics tested in accordance with IESNA LM-79. Results shown are based on 25°C ambient temperature.
 - Wattage shown is based on 120V input.
 - Results based on 3000K/95CRI and CS (O Trim Type) or WH (L and R Trim Types) Reflector Finish. Actual lumens may vary +/-5%.
 - Wattage is for downlight or uplight components. Add wattages together for selected lumen packages to find total fixture wattage.
 - Use multiplier tables to calculate additional options.

PHOTOMETRY

6CRDI-TL-L24/9DWU/L15/9DWD-DIM-UNV-OW/OW-CS-WM Total Luminaire Output: 4230 lumens; 75.4 Watts | Efficacy: 56 lm/W | 95 CRI; 3000K CCT



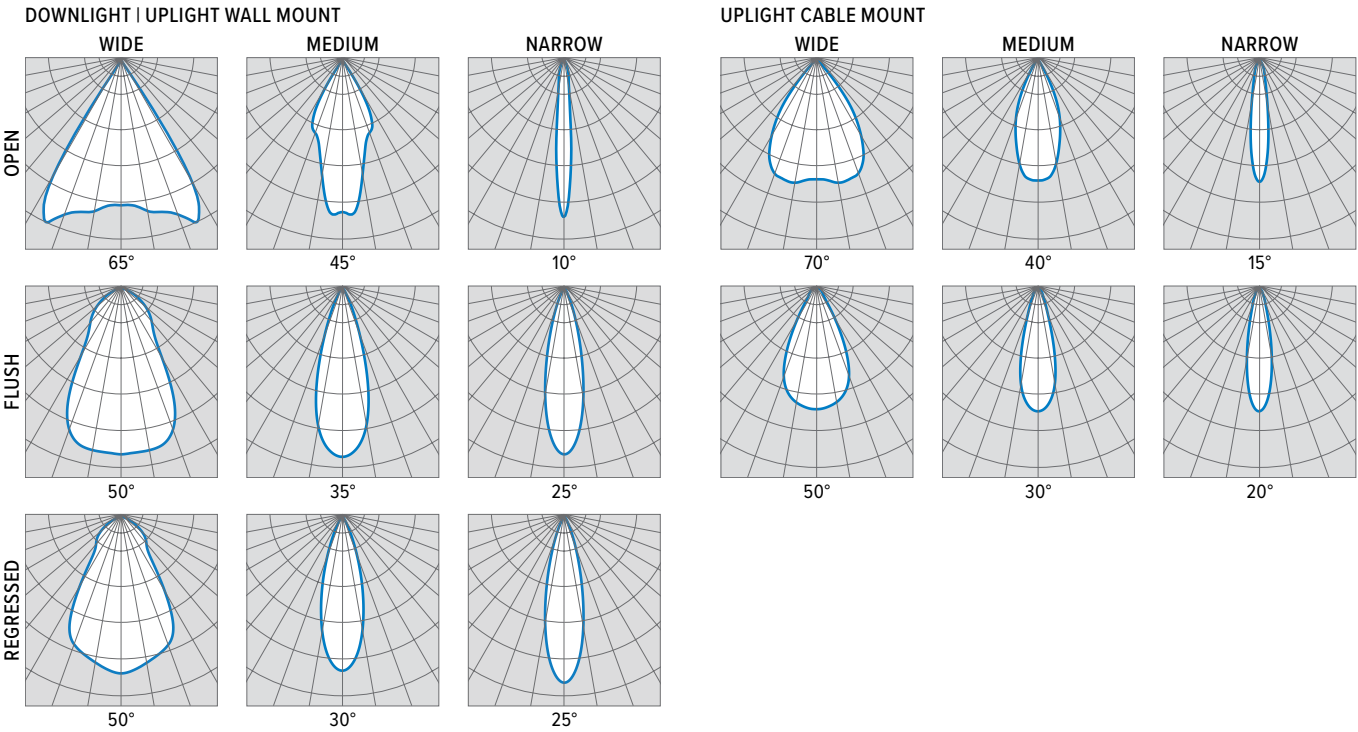
	VERTICAL ANGLE	HORIZONTAL ANGLE	ZONAL LUMENS
		0°	
CANDLEPOWER DISTRIBUTION	0	2011	
	5	2071	200
	15	2178	623
	25	2479	1057
	35	341	403
	45	49	40
	55	12	12
	65	1	2
	75	0	0
	85	0	1
	90	4	
	95	4	4
	105	6	6
	115	10	10
	125	20	19
	135	64	69
	145	675	426
	155	1636	725
	165	1697	482
	175	1543	150
	180	1479	

	ZONE	LUMENS	% FIXTURE
LUMEN SUMMARY	0 - 30	1880	44
	0 - 40	2283	54
	0 - 60	2336	55
	0 - 90	2339	55
	90 - 120	21	1
	90 - 150	535	13
	90 - 180	1892	45
	0 - 180	4230	100



6CRDI dim to **WARM**

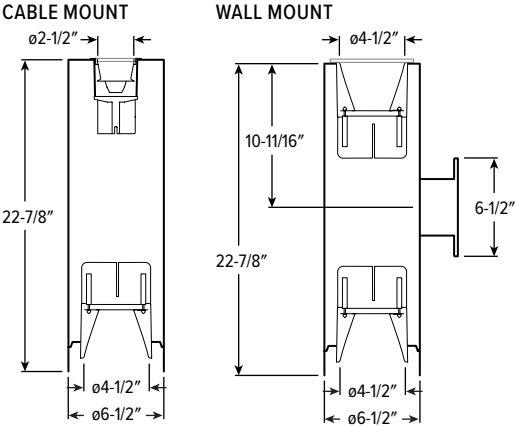
6.5" Direct/Indirect Cylinder – Round



TRIMLOCK DETAILS



CROSS SECTIONS



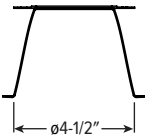
6CRDI dim to WARM

6.5" Direct/Indirect Cylinder – Round

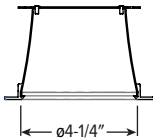
TRIM TYPE DETAILS

DOWNLIGHT

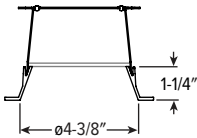
OPEN



FLUSH

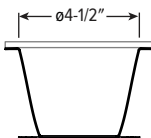


REGRESSED

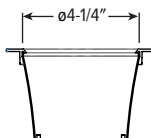


UPLIGHT WALL MOUNT

OPEN

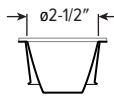


FLUSH

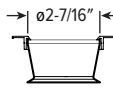


UPLIGHT CABLE MOUNT

OPEN



FLUSH



MOUNTING DETAILS

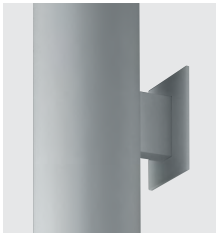
CABLE MOUNT (CM__)



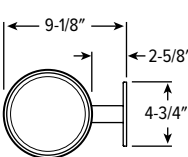
Cable mount fixtures are provided with:

- Adjustable length aircraft cable, must specify length in inches
- 18-gauge cord in choice of 9 colors, see Cord Options for ordering info.
- One 5" canopy
- T-bar clip with 1/4-20 stud
- Hard ceiling anchor provided by others

WALL MOUNT (WM)



Mounts to 4" square J-box.



CORD OPTIONS

Must specify cord when cable mounting.

ORDERING EXAMPLE: S2438/W				
CORD TYPE	LENGTH	# CONDUCTORS	WIRE SIZE	COLOR
S Straight	24 24"	3 3	8 18-gauge	Standard
	48 48"	4 4 ⁽¹⁾		/W White
	96 96"	5 5		/B Black
		6 6 ⁽¹⁾		Braided
				/WH White
				/BL Black
				/BR Brass
				/AE Aegean Blue
				/RE Red
				/SV Silver
				/GU Gunmetal
				/NK Nickel
				/GR Gray

¹ Standard cord only.

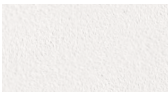
COLOR DETAILS

Additional colors may be available, consult factory.

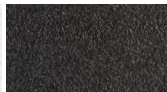


HOUSING FINISH DETAILS

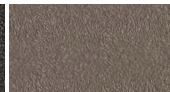
WHITE



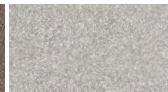
BLACK



BRONZE



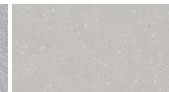
NICKEL



SILVER



ALUM



For custom color, please specify RAL code or a manufacturer code with description. All custom colors other than RAL require two sample swatches, minimum 1" square.

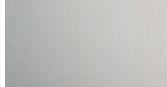
REFLECTOR FINISH DETAILS

SMOOTH FINISH

SPC



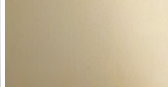
SG



PW



GD



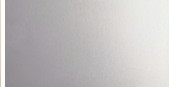
CG



RG



CS

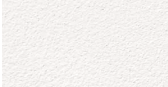


AL



TEXTURED FINISH

WH



BL



BZ



NK



SV

