



# All That Jazz

LVT



## **We're EF Contract.**

Part of the fastest-growing, most progressive family of flooring companies, we stand for confidence in quality, relentless service and doing right by all.

Our products are inspired by you: offering the carpet and hard-surface flooring that you want and need, that you've been seeking but unable to find, until now.

Every collection, pattern and colorway are created with best in class performance and in pursuit of design that is simply beautiful.

---

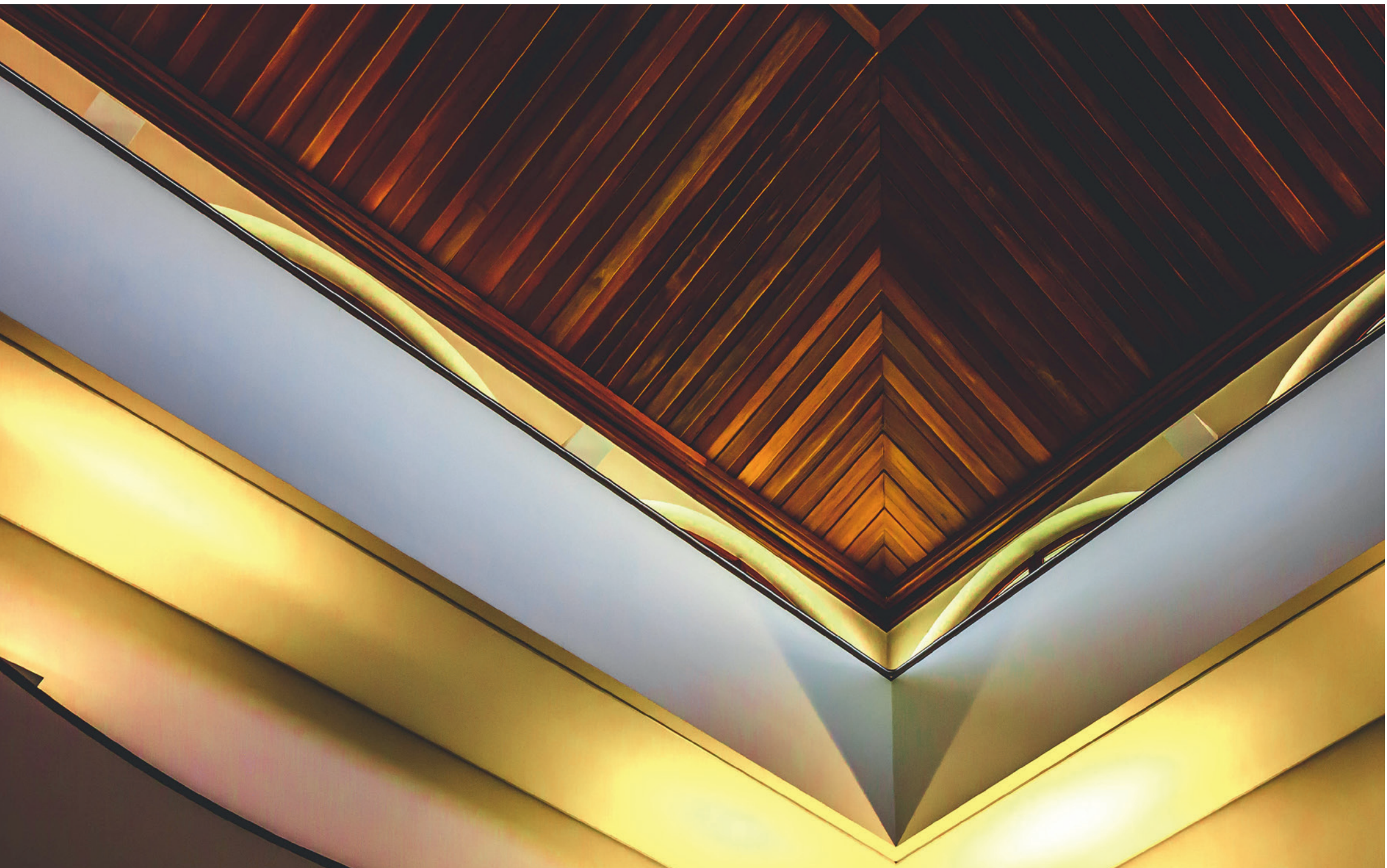
LVT has transformed hard surface vinyl flooring in the past decade, due to its easy installation and incredible durability. At EF Contract, we build on these performance characteristics with simple, sophisticated beauty.

Bringing together natural looks with technology-driven quality, to create a flooring that will last for years in your education, retail, healthcare, hospitality and even corporate installations.

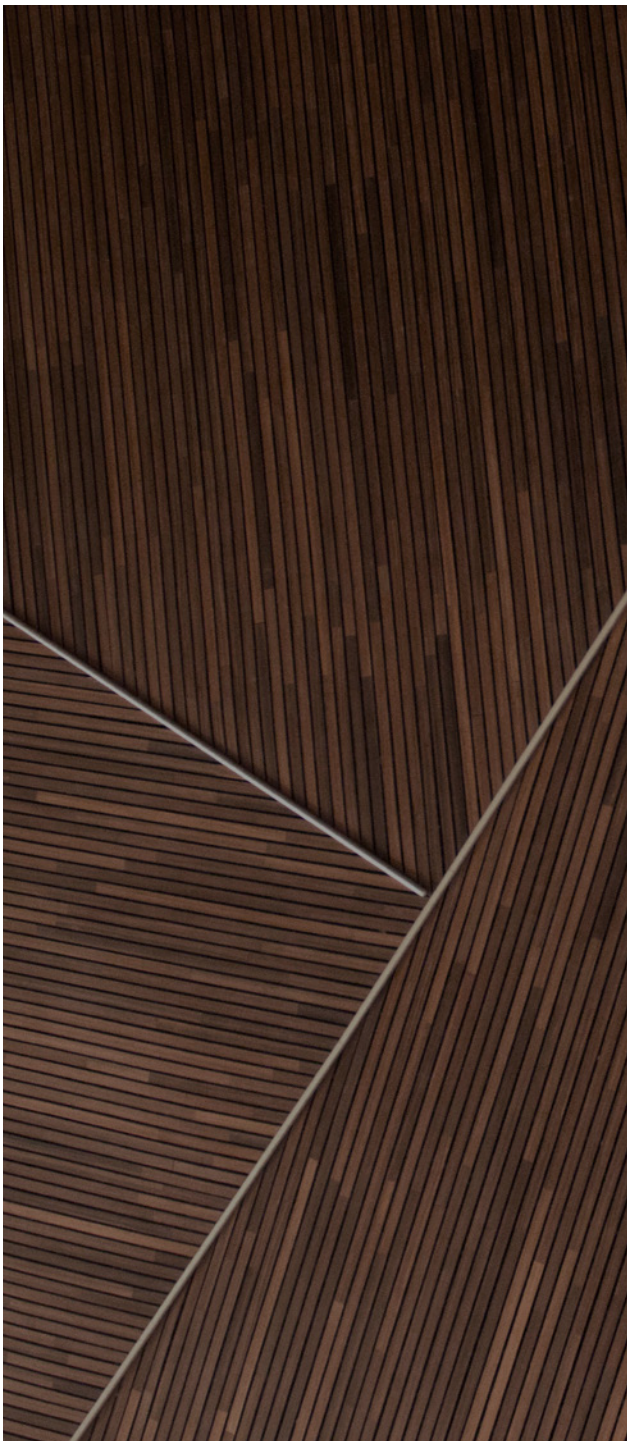


## All That Jazz

A crisp *tap-tap-tap* of a hi-hat. The heartbeat-like *thump* of bass. And the free-spirited improvisation of brass. These distinct sounds lead us to a realm of nostalgia for not only what once was, but what still can be. With choreographed patterns complementing an unexpected *tap-tap-tap* of metallic accents, All That Jazz is rooted in a hypnotic rhythm that brings distinct energy and originality to any space.



ALL THAT JAZZ - AS TIME GOES BY / ALL THAT JAZZ - SWEET GEORGIA BROWN / ALL THAT JAZZ - SHINE / ALL THAT JAZZ - YESTERDAYS





ALL THAT JAZZ - SUMMERTIME / ALL THAT JAZZ - SOMETHING COOL





7" X 48"

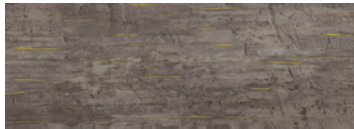
ALL THAT JAZZ



ALL THAT JAZZ | BLVDC-003  
AS TIME GOES BY



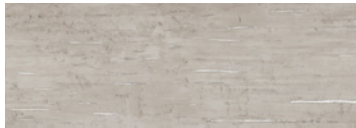
ALL THAT JAZZ | BLVDC-008  
LAZY RIVER



ALL THAT JAZZ | BLVDC-002  
MOONLIGHT COCKTAIL



ALL THAT JAZZ | BLVDC-005  
SHINE



ALL THAT JAZZ | BLVDC-001  
STARDUST



ALL THAT JAZZ | BLVDC-007  
SWEET GEORGIA BROWN

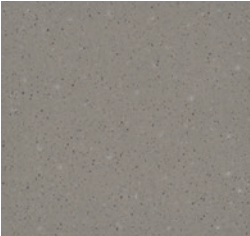


ALL THAT JAZZ | BLVDC-006  
TEMPTATION



ALL THAT JAZZ | BLVDC-004  
YESTERDAYS

19.7" X 19.7"



ALL THAT JAZZ  
BLVDC-013  
GIANT STEPS



ALL THAT JAZZ  
BLVDC-012  
MILESTONE



ALL THAT JAZZ  
BLVDC-011  
SOMETHING COOL



ALL THAT JAZZ  
BLVDC-010  
SUMMERTIME

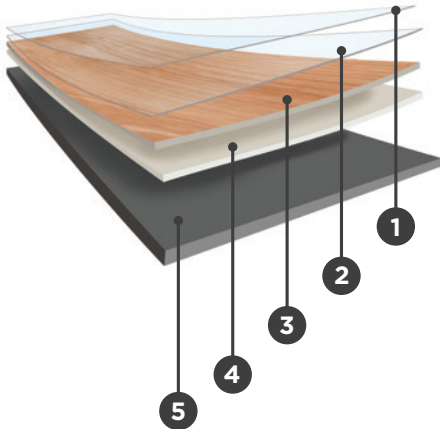
PRODUCT DETAILS

Sustainably Sound

EF Contract believes true sustainability requires full attention to the potential impacts of every aspect of our business. In accordance with our mission of waste reduction, all EF Contract LVT products are 100% recyclable.



You can rest assured that health is also a top priority and all EF Contract LVT products are FloorScore Certified.



- 1 Protective UV Cured Urethane
- 2 22mil Wear Layer High Definition Print Film
- 3 High Definition Print Film
- 4 Impact Resistant Core Layer
- 5 Foundational Base Layer

©2018 Engineered Floors LLC - This unique design is protected under the U.S. Copyright Act of 1976. Any unauthorized copying or duplication of this design constitutes copyright infringement in violation of federal law.

These photographs are representations of the installation for this modular product. Your modular installation may look different than these photos depending upon individual tile placement, lighting, and overall space layout, including furnishings. Final tile placement and the resulting visual is thus the customer’s, and not EF Contract’s responsibility.

To learn more, visit:

EFCONTRACTFLOORING.COM

ENVIRONMENTAL	
INDOOR AIR QUALITY	FLOORSCORE® CERTIFIED
LEED V4	CONTRIBUTES TO IAQ: LOW EMITTING MATERIALS
END OF LIFE	100% RECYCLABLE

TECHNICAL INFORMATION	
PRODUCT WARRANTY	10 YR COMMERCIAL WARRANTY
REQUIRED ADHESIVE	COMMERCIALON PREMIUM MODULAR AND LVT ADHESIVE
INSTALLATION METHOD	FULL SPREAD

STYLE	ALL THAT JAZZ
THICKNESS	3MM
WEAR LAYER	22MIL
FINISH/COATING	UV CURED URETHANE
NOMINAL DIMENSIONS (INCHES)	7" X 48", 19.7" X 19.7"
PATTERN REPEAT	RANDOM PATTERN
MICRO-BEVELED	PLANK - YES, TILES - NO
CLASS/ASTM F1700	CLASS III PRINTED FILM VINYL PLANK TYPE B (EMBOSSSED)
BACKING CLASS	COMMERCIAL GRADE
GLOSS LEVEL (IF KNOW)	MATTE FINISH
COMMERCIAL TRAFFIC	HEAVY COMMERCIAL
FLOORSCORE CERTIFIED (Y/N)	YES

PERFORMANCE		
SIZE AND TOLERANCE	ASTM F2055	PASSES
THICKNESS	ASTM F386	PASSES MAX. 0.010 IN.
SQUARENESS	ASTM F2055	PASSES
RESIDUAL INDENTATION	ASTM F1914	PASSES
FLEXIBILITY	ASTM F137	PASSES
DIMENSIONAL STABILITY	ASTM F2199	PASSES
CHEMICAL RESISTANCE	ASTM F925	PASSES
RESISTANCE TO HEAT	ASTM F1514	PASSES
RESISTANCE TO LIGHT	ASTM F1515	PASSES
CRITICAL RADIANT FLUX	ASTM E648	CLASS 1 (< 0.45 W/CM2)
OPTICAL SMOKE DENSITY	ASTM E662	PASSES < 450
SLIP RESISTANCE	ASTM C1028	PASSES ADA COMPLIANT (> 0.50)
STATIC LOAD	ASTM F970	1000 PSI

PACKAGING	7" X 48"	19.7" X 19.7"
SQUARE FEET PER PLANK/TILE	2.33	2.7
SQUARE FEET PER CARTON	35	35
WEIGHT PER PLANK/TILE (LBS/ PLANK)	2.5 (LBS.)	2.89 (LBS)
WEIGHT PER CARTON	37.5 (LBS)	37.5 (LBS.)
PIECES PER BOX	15	13
BOXES PER PALLET	50	100

INSTALLATION



1/3 DROP



ASHLAR



HERRINGBONE



QUARTER  
TURN



ASHLAR



MONOLITHIC



1502 Coronet Drive  
Dalton, Georgia 30720  
U.S.A.

800.451.1250  
[efcontractflooring.com](http://efcontractflooring.com)