

AVA[®] RYME[™]



Béton Iron



Tuscany Oak Peanut

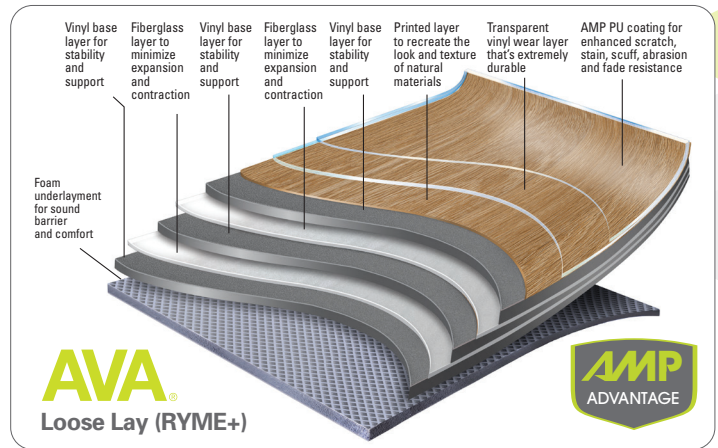
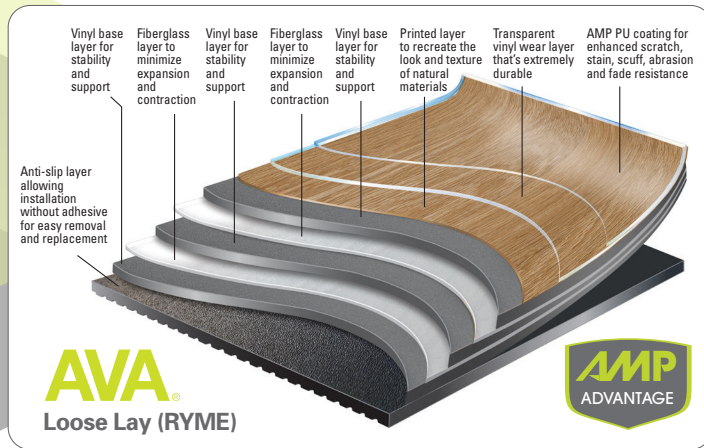
An IXPE backing on RYME+ delivers natural acoustical properties.

Featuring 16 popular colors to complement other AVA[®] collections, AVA[®] RYME[™] offers large 9" x 48" loose-lay planks in contemporary and rustic classic oak designs, plus four unique concrete designs in 39.37" x 39.37" tiles. Quick and easy to install with less floor prep, RYME and RYME+ hide flooring imperfections better than standard glue down LVT.

AVA[®] avaflor.com

With worldwide sales offices and distribution partners, AVA[®] is a leader in the design and manufacturing of innovative and sustainable resilient flooring. AVA[®] has developed a diverse range of designs and products that have won numerous awards and are recognized by the industry as setting the benchmark in LVT for a variety of markets.





Loose Lay Specifications

- Wear Layer: 22 mil (0.55 mm)
- Overall Thickness: 5.0 mm
- Size, Peninsula / Alpine / Tuscany: 9" x 48" (228 mm x 1219 mm)
- Size, Béton: 39.37" x 39.37" (1000 mm x 1000 mm)
- 100% Phthalate Free; Reach Compliant
- Warranty: 20-Year Commercial & Lifetime Residential

Loose Lay w/IXPE Specifications

Same as RYME, but with the following:

- Overall Thickness: 5.5 mm
- IXPE Acoustical Backing (Sound Rating: STC 53, IIC 55 and Δ IIC 20 –with 6" slab concrete assembly with no ceiling)
- Warranty: 15-Year Light Commercial & Lifetime Residential

Peninsula (9" x 48" / 228 mm x 1219 mm)
Straight Edge



Peninsula Oak Canyon
PO2D002L / RYME+: PO2D002AL



Peninsula Oak Summit
PO2D001L / RYME+: PO2D001AL



Peninsula Oak Panhandle
PO2D006L / RYME+: PO2D006AL



Peninsula Oak Timber
PO2D005L / RYME+: PO2D005AL

Alpine (9" x 48" / 228 mm x 1219 mm)
Microbevel Edge / Embossed in Register



Alpine Oak Anchor
AO2D009L / RYME+: AO2D009AL



Alpine Oak Prestige
AO2D008L / RYME+: AO2D008AL



Alpine Oak Khaki
AO2D005L / RYME+: AO2D005AL



Alpine Oak Syrup
AO2D007L / RYME+: AO2D007AL

Tuscany (9" x 48" / 228 mm x 1219 mm)
Microbevel Edge / Embossed in Register



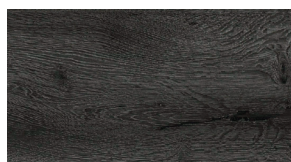
Tuscany Oak Peanut
TO2D008L / RYME+: TO2D008AL



Tuscany Oak Snow
TO2D001L / RYME+: TO2D001AL

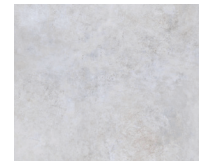


Tuscany Oak Mist
TO2D002L / RYME+: TO2D002AL



Tuscany Oak Carafe
TO2D007L / RYME+: TO2D007AL

Béton (39.37" x 39.37" / 1000 mm x 1000 mm)
Straight Edge



Béton Pearl
BN001L



Béton Iron
BN002L



Béton Steel
BN003L



Béton Harbor
BN004L

AVA RYME

Talk to your AVA® representative to get our RYME™ architectural folder and see which products would be best for your next project.