

AVA[®] STRM[™]



AVA[®]'s patented AMP Advantage coating makes STRM[™] the perfect solution for heavy-traffic areas that need durability and ease of maintenance, including Hospitality, Retail and Public Spaces.

STR031, STR032



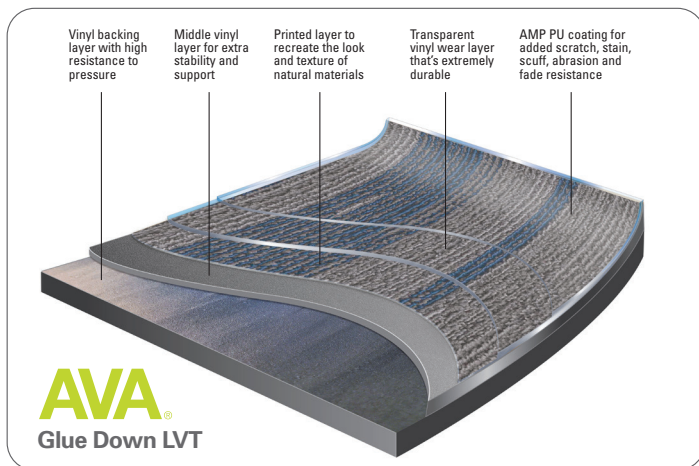
STR013, STR051

Blending the performance and durability of hard surface with the soft and warm visuals of carpet tile, AVA[®] STRM[™] brings unique design options for any commercial setting in two different constructions – 5 mm Loose Lay and 2.5 mm Glue Down – in a unique 9.84" x 39.37" plank format.

AVA[®] avaflor.com

With worldwide sales offices and distribution partners, AVA[®] is a leader in the design and manufacturing of innovative and sustainable resilient flooring. AVA[®] has developed a diverse range of designs and products that have won numerous awards and are recognized by the industry as setting the benchmark in LVT for a variety of markets.



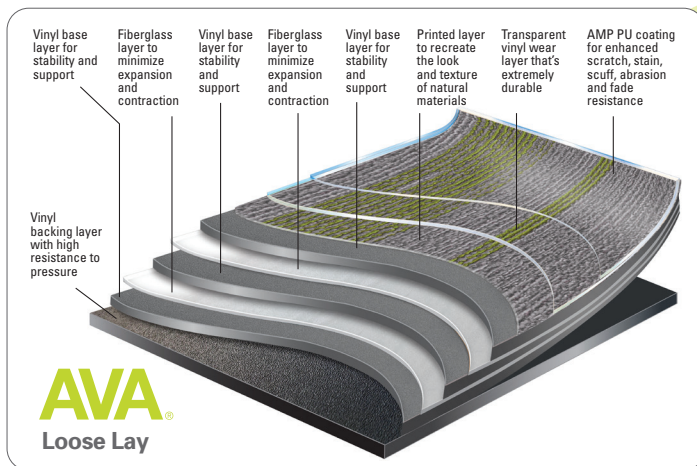


Glue Down Specifications

- Wear Layer: 22 mil (0.55mm)
- Overall Thickness: 2.5 mm
- Size: 9.84" x 39.37" (250mm x 1000mm)
- 100% Phthalate Free
- Reach Compliant
- Warranty: 20-Year Commercial and Lifetime Residential



- Patented Coating
- 30% More Scratch Resistance Over Typical Coatings
- Exceptional Wear Resistance and High Strength



Loose Lay Specifications

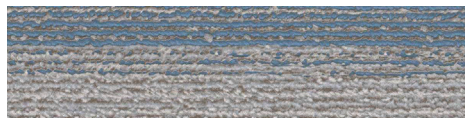
- Wear Layer: 22 mil (0.55mm)
- Overall Thickness: 5.0 mm
- Size: 9.84" x 39.37" (250mm x 1000mm)
- 100% Phthalate Free
- Reach Compliant
- Warranty: 20-Year Commercial and Lifetime Residential



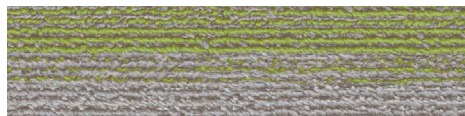
- Patented Coating
- 30% More Scratch Resistance Over Typical Coatings
- Exceptional Wear Resistance and High Strength



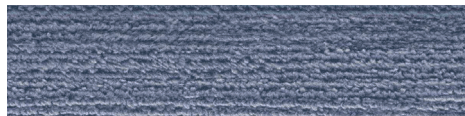
Glue Down: STR011 / Loose Lay: STR011L



Glue Down: STR012 / Loose Lay: STR012L



Glue Down: STR013 / Loose Lay: STR013L



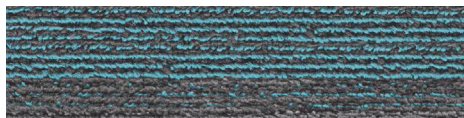
Glue Down: STR041 / Loose Lay: STR041L



Glue Down: STR051 / Loose Lay: STR051L



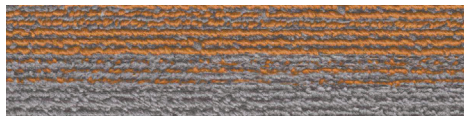
Glue Down: STR031 / Loose Lay: STR031L



Glue Down: STR032 / Loose Lay: STR032L



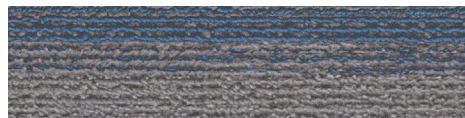
Glue Down: STR033 / Loose Lay: STR033L



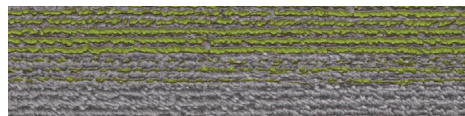
Glue Down: STR025 / Loose Lay: STR025L



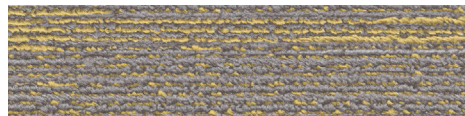
Glue Down: STR021 / Loose Lay: STR021L



Glue Down: STR022 / Loose Lay: STR022L



Glue Down: STR023 / Loose Lay: STR023L



Glue Down: STR024 / Loose Lay: STR024L

Talk to your AVA[®] representative to get our STRM[™] architectural folder and see which products would be best for your next project.

AVA[®]STRM[™]