



F0702 Thunder Hill Hickory, Naturally, F0715 Kaimana Point, Interlaced Aqua



Unbound™  
Luxury Flooring



# A Seamless Finish

---

Create a cohesive, seamless space intertwining resilient and soft surfaces with Unbound™. Large impact, 5.0 mm planks and tiles easily transition to carpet without the need for disruptive transition strips and can be installed quickly with a loose lay method.

Unbound offers an easy, intentional color palette in textile, concrete and wood visuals. From colorfast indigos and tinted neutrals, to soft grays, coordinate across the collection for a unique installation.



**Byrds Nest** is a refined wood visual with minimal knots and cracks. **Mountaineer Oak** is an “almost rustic” with balanced color play and minimal character. Both designs are available in 9 in. x 59 in. planks. **Thunder Hill Hickory** is a classic visual in modern colorways, available in 7 in. x 59 in. planks.



F0201 Byrds Nest Oak, Gray Owl



F0202 Byrds Nest Oak, Brown Sparrow



F0301 Byrds Nest Oak, Nighthawk



F0313 Mountaineer Oak, Misty Horizon



F0701 Thunder Hill Hickory, Frosted Gray



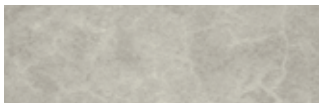
F0702 Thunder Hill Hickory, Naturally



F0703 Thunder Hill Hickory, Storm Cloud



F0303 Mountaineer Oak, Bronze Bluff



F0403 Urban Ridge, Cinder Block



F0404 Urban Ridge, City Sidewalk



F0402 Urban Ridge, City Shadows



F0421 Forged Concrete, Birch Bark



F0422 Forged Concrete, Elderberry



F0423 Forged Concrete, Walnut Shell



F0424 Forged Concrete, Turmeric



F0425 Forged Concrete, Indigo



F0426 Forged Concrete, Juniper

**Urban Ridge** and **Forged Concrete** designs are available in 36 in. x 36 in. tiles and feature concrete visuals in a variety of colorways, from indigos and tinted neutrals to soft grays.





# Building Better

---

We share your commitment to transparency and building a better environment together.

- Low VOC emissions and FloorScore® certified
- Free of ortho-phthalates and heavy metals
- Recyclable through the On&On® Recycling Program
- Health Product Declaration (HPD) and third-party certified Environmental Product Declaration (EPD) available



**Woven Impressions**, available in 36 in. x 36 in. tiles, is a hybrid design, weaving together concrete and textural elements in the same visual. **Kaimana Point** features a geometric visual softened by a textile background and is available in 7 in. x 59 in. planks. With a unique striated visual in neutral colorways, **Lineaire** is available in 9 in. x 59 in. planks.



F0411 Woven Impressions, Cotton



F0412 Woven Impressions, Linen



F0413 Woven Impressions, Jute



F0414 Woven Impressions, Flax



F0711 Kaimana Point, Interlocked Light



F0712 Kaimana Point, Intermingled Gray



F0714 Kaimana Point, Interconnected Blue



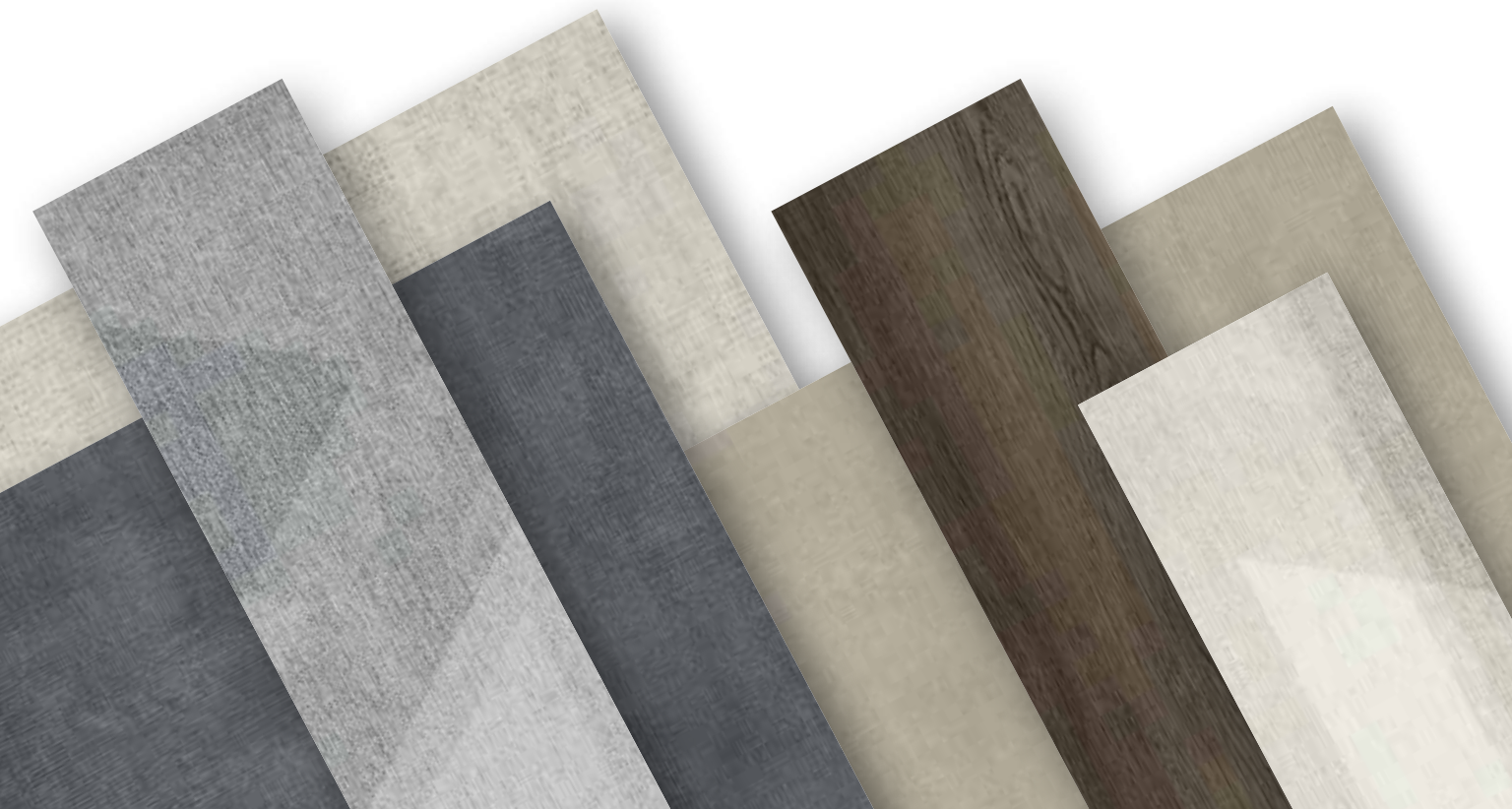
F0715 Kaimana Point, Interlaced Aqua



F0204 Lineaire, Beige Breeze



F0206 Lineaire, Kobicha







# Breakthrough Innovation

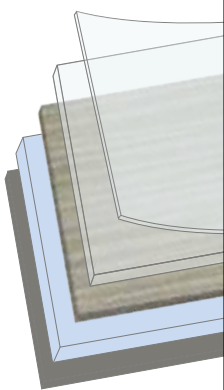
---

Diamond 10<sup>®</sup> Technology is a patented innovation that uses cultured diamonds to provide the ultimate in scratch, stain, and scuff resistance.

With Diamond 10 Technology, you'll never compromise the look you want for the durability you need. Made to stand up to the wear and tear of commercial settings, this low-maintenance solution keeps floors looking newer, longer.



F0421 Forged Concrete, Birch Bark, F0201 Byrds Nest Oak, Gray Owl



**1. Diamond 10® Technology**

Patented innovation that uses cultured diamonds to provide category-leading scratch, stain, and scuff resistance from edge-to-edge

**2. Performance Wear Layer**

The combination of Diamond 10® Technology and the unique rigid wear layer results in enhanced durability and abrasion resistance

**3. Designer Printed Visual**

**4. Double Fiberglass Reinforced Base Layer**

**5. Non-Skid Backing for Looselay Installation**

**20 Year  
Commercial  
Limited Warranty**

Supported by a 20 Year Commercial Limited Warranty. Add 10 years of overall warranty coverage by using Strong System™ subfloor preparation products. Visit [ArmstrongFlooring.com](http://ArmstrongFlooring.com) for more information.

## Product Information

**Construction** - Solid Vinyl Tile (Luxury Vinyl Tile / LVT)

**International Specifications** - ASTM F1700, Class III,  
Type B, embossed surface

**Overall Thickness** - 5.0 mm / 0.200 in.

**Wear Layer Thickness** - 20 mil / 0.020 in.

**Size** - Thunder Hill Hickory / Kaimana Point – 7 in. x 59 in.

Byrds Nest / Mountaineer Oak / Lineaire – 9 in. x 59 in.

Urban Ridge / Forged Concrete

Woven Impressions – 36 in. x 36 in.

**Factory Finish** - Diamond 10® Technology

**Installation** - Looselay, Modified Looselay or Full Spread Adhesives:

S-315 Roll Strong™, S-288 Premium, S-1000

**Maintenance Options** - No Polish – No Buff, Polish Optional

Color and visual variation is inherent in all resilient products. Prior to installation, we recommend reviewing multiple tiles.

---

# ArmstrongFlooring™

Walk On. Walk Strong.™



**Visit [ArmstrongFlooring.com](https://www.armstrongflooring.com)**

for complete Product, Technical,  
Adhesives, Installation and  
Maintenance recommendations.

Print#: FP7440F10354-721

Printed in USA. | Armstrong and the Armstrong logo are under license from AWI Licensing LLC. | All other trademarks are owned by AFI Licensing LLC. | © 2021 AFI Licensing LLC.  
FloorScore® is a registered trademark of the Resilient Floor Covering Institute.