

20 Mil  
**LANGTON™**  
CLICK & GLUE DOWN

**PROSERIES™**  
LUXURY VINYL FLOORING  
daltile



**SuperGuardX™**  
REINFORCED SHIELD

**UNIDROP**  
PATENTED TECHNOLOGY®



# 20 Mil LANGTON™ CLICK & GLUE DOWN

## VERSATILE & STRIKING

Weather-worn or clean modern, Langton™ wood look flooring suits a variety of styles from Wabi-Sabi aesthetic to Scandinavian sensibility. Offered in two different platforms for versatile installation, these luxury vinyl planks offer freedom in design without sacrificing everyday durability.

Langton™ luxury vinyl tiles are offered in eight colors as both a glue down and a drop-and-lock clicking plank. These striking wood look planks are backed by a strong 20 Mil wear layer with protective SuperGuard™ Technology that resists scratches and dents.

### DESIGNED FOR VERSATILITY

- 7-1/2" x 52" Wood look planks
- 8 Trend-setting wood visuals
- HD design with high-variation
- Glue down design or floating design with Unidrop® Locking System
- 2.5 mm (Glue down) / 4.2 mm (Click) Thickness

### DEPENDABLE DURABILITY

- SuperGuard™ Technology 20 Mil wear layer to hold up to everyday foot traffic
- 100% Waterproof
- 100% Virgin Vinyl
- Made in the USA
- 30 Year residential / 10 year light commercial limited warranty





SIZES:



7-1/2 x 52  
Plank

7-1/2 x 52 WOOD LOOK PLANKS



DUNE LT20  
DUNE LT30 (CLICK)



WINTER OAK LT21  
WINTER OAK LT31 (CLICK)



GATEWAY PINE LT22  
GATEWAY PINE LT32 (CLICK)



SUMMERWOOD LT23  
SUMMERWOOD LT33 (CLICK)



CREEKSIDE LT24  
CREEKSIDE LT34 (CLICK)



PIER LT25  
PIER LT35 (CLICK)



WHISKEY BARREL LT26  
WHISKEY BARREL LT36 (CLICK)



ENGLISHWOOD LT27  
ENGLISHWOOD LT37 (CLICK)

20 Mil  
**LANGTON™**  
CLICK & GLUE DOWN

## SPECIFICATIONS

Product Type:	Flexible LVF
Installation:	Click / Glue Down
Thickness:	4.2 mm (Click) 2.5 mm (Glue Down)
Wear Layer:	20 Mil (0.508 mm)
Finish:	SuperGuard™ Technology
Size:	7-1/2" W x 52" L Plank
Underlayment:	Not Attached
Bevel:	Micro Bevel
Plank Variation:	13 Unique Planks
Sq. Ft./Carton:	26.91 (Click) 36.22 (Glue Down)
Pieces/Carton:	10 (Click) 13 (Glue Down)
Weight/Piece:	4.35 lbs (Click) 2.32 lbs (Glue Down)
Weight/Carton:	43.54 lbs (Click) 30.20 lbs (Glue Down)
Installation Advisory:	Langton™ click LVF uses Unidrop® Locking System; no adhesive required. If underlayment is desired for added insulation and sound attenuation, install using the Daltile approved underlayment. See <a href="http://daltile.com/LVF">daltile.com/LVF</a> for more information.  Glue Down LVF must be installed using ProSeries™ by Daltile Adhesive. See <a href="http://daltile.com/LVF">daltile.com/LVF</a> for more recommended installation and adhesive information
Transitions:	Click LVF transitions are offered in a Vinyl 4-in-1 and Overlap Vinyl Stair Nose. Can be installed with or without underlayment, when total installation is 8.0 mm or less. See <a href="http://daltile.com/LVF">daltile.com/LVF</a> for more information.
Warranty:	Limited 10 Year Light Commercial Limited 30 Year Residential

## PERFORMANCE & CHARACTERISTICS

Construction:	Commercial Grade Luxury Vinyl Flooring; 100% Virgin
Classification:	ASTM F1700 - Class III, Type A - Smooth, Type B - Embossed
Squareness:	ASTM F2421 - Passes - ±0.010" max
Size and Tolerance:	ASTM F2421 - Passes - ±0.016 in. / linear foot
Thickness:	ASTM F386 - Passes - as specified ±0.005 in
Flexibility:	ASTM F137 - Passes - 1" mandrel
Dimensional Stability:	ASTM F2199 - Passes - 0.020 in. / linear foot max
Static Load Limit:	ASTM F970 - Passes, test to limit 1200/1500 psi
Residual Indentation:	ASTM F1914 - Passes - Average less than 8% maximum single reading 10%
Resistance To Chemicals:	ASTM F925 - Passes - No change
Resistance To Light:	ASTM F1515 - Passes - $\Delta E \leq 8$
Resistance To Heat:	ASTM F1514 - Passes - $\Delta E \leq 8$
Critical Radiant Flux:	ASTM E648 - Passes - Class 1 ( $> 0.45 \text{ W/cm}^2$ )
Smoke Density:	ASTM E662 Part A - Passes - $< 450$

## NOTES

See [daltile.com/LVF](http://daltile.com/LVF) for recommended installation and care guidelines



MADE IN THE U.S.A.

7834 C.F. Hawn Freeway,  
Dallas, Texas 75217 | 1.800.933.TILE

To view the complete collection of  
Daltile® products and information,  
visit our website at [daltile.com/LVF](http://daltile.com/LVF)



©2022 Dal-Tile Corporation (1/22)



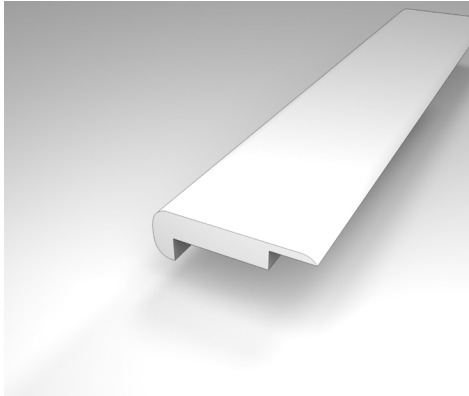
# PERFORMANCE ACCESSORIES



LANGTON™  
CLICK TRANSITIONS

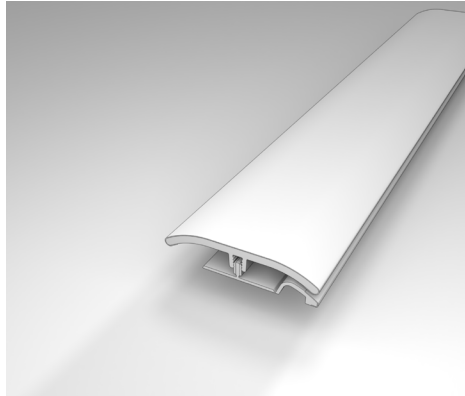
Two trims and moldings that are designed to coordinate with each of our existing colors within the collection.

- **VSNP** Overlap Stair Nose (2" x 79")
- **V4IN1** Four Unique Trims and mouldings in one single SKU (2" x 79")  
(T-Molding, Hard Surface Reducer, Carpet Transition, End Molding)



**Overlap Stair Nose**

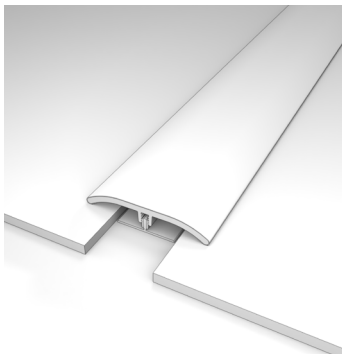
Creates a transition to the edge of the step by overlapping the flooring on the back end instead of being flush.



**4-in-1 Transition**

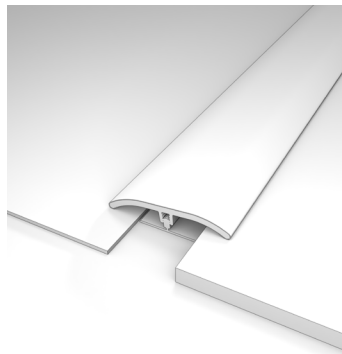
Performance Accessories' exclusive 4-in-1 transition allows you to utilize a single transition for four different applications.

**EACH OF THE BELOW ARE ACHIEVED VIA THE V4IN1 TRANSITION (SHOWN ABOVE)**



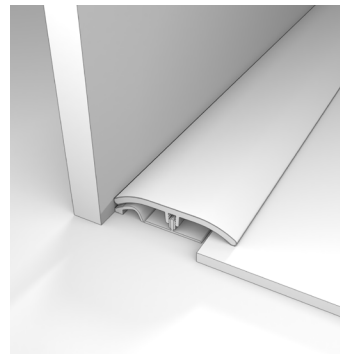
**T-Molding**

Used to transition between flooring of equal heights and in doorways.



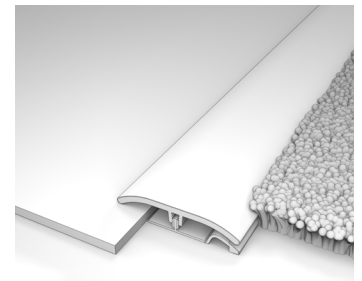
**Hard Surface Reducer**

Connects two floors of different heights.



**End Molding**

Creates a smooth and flush finish on the edges of steps where the flooring meets the transition.



**Carpet Transition**

Provides a smooth transition between your hard surface floor and carpet.



CERTIFIED BY  
SCS Global Services

**PROSERIES™**  
LUXURY VINYL FLOORING

**dalatile**