

Specifications

Dwell

466419

maharam

Application

Seating, Upholstered Walls

Characteristics

Content: 68% Post-Industrial Recycled Polyester, 32% Post-Consumer Recycled Polyester

Finish: Stain Repellent

Additional Finishes Available: Alta, Alta Food and Beverage, Crypton, Nanotex, Nanotex with Impermeable Barrier

Backing: Latex

Width: 54" (137cm)

Repeat: Non-match

Bolt Size: 55 yards (50 m)

Weight: 10.2 oz/ly (316 gr/lm)

Country of Origin: Canada

Price

Contact your sales representative for pricing.

Maintenance

W/S-Clean with water-based cleanser or mild, water-free dry cleaning solvent.

☒ ☒ ☒ ☒ ☒

Testing

Abrasion: ASTM D4157, 100,000 double rubs Wyzenbeek

Note: Abrasion test results exceeding ACT Performance Guidelines are not an indicator of product lifespan. Multiple factors affect fabric durability and appearance retention.

Flammability: ASTM E 84 Unadhered

CAL 117-2013

EN 13501 Unadhered*

GB/T 17591*

*passes with additional treatment

Lightfastness: AATCC 16E, 40+ hours

☐ ☀ ☕ ☑ ☒

Specifications

Dwell

466419

maharam

Environmental

Facts Gold Certified

Greenguard Gold Certified

Contains Recycled Content

FR Free

Warranty

5 years: Indoor Seating

3 years: Upholstered Walls.

© 2017 Maharam

Complete product information at maharam.com

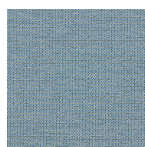
800.645.3943



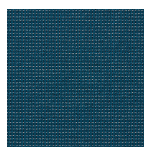
001 Sesame



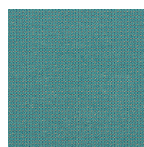
002 Summit



003 Freeze



004 Poolside



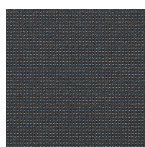
005 Teal



006 Mojito



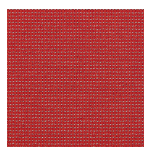
007 Lizard



008 Thunder



009 Foil



011 Firecracker