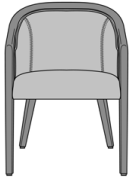


Kwalu Features

Product Dimensions and Specs

Overall	23.5W 24D 32.25H
Seat	20W 19D 19H
Arm	26H
Wt.	29 lbs
Wt. Capacity	350 lbs

## Product Statement of Line Images



Miranda Arm Chair  
Model: MRND1111  
23.5W 24D 32.25H  
26AH

## Product Features



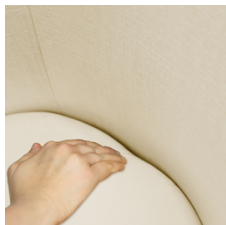
Cut Out Arm Detail

Distinctive arm cut out detail allows for easy handling of the chair.



Durable Finish

Kwalu's solid surface (1/8" thick) proprietary finish doesn't have any of the drawbacks of wood. The frames are moisture impervious, graffiti-resistant, easy to clean and maintenance-free.



Concealed Cleanout

Concealed cleanout eliminates a debris build-up behind the seat cushion.



Optional Casters

Optional casters available on front legs only.

[Learn more >](#)

## Product Foam

Foam is compliant with CAL 117 and AB 2998

## Product Glides

Metal Knock in Glide with Teflon Cap

Product Finishes

Frame Finish



Sugar Maple    Weathered Teak    Northern Oak    Vintage Teak    Patagonian Cherry    Northern Walnut



Medium Cherry    English Chestnut    Light Walnut    Silver Ash    Golden Ebony    African Mahogany



Espresso    Natural Mahogany    Midnight Oak    Blackwood    Premium Platinum    Premium Soft Gold



Premium Pure Copper    Premium Black

## Product Environmental Certifications

