

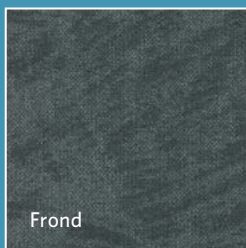
# ARCHIPELAGO

Cassia / Frond

Mangrove / Sea Grape



Cassia



Frond



Mangrove



Sea Grape



PRICE

Milliken™

150  
years of *Milliken*



## INSPIRED.

Take your eyes off the horizon and see the island for its holistic beauty. Marvel at the lush vegetation that surrounds your daily sojourn across the inlet. Tension and worry dissolve with each step as if kissed by the breeze. These moments captured forever as memories of carefree days too soon lost to tomorrow.





Cassia in Clay, ashlar tile installation



Fronde in Clay, ashlar tile installation



Mangrove in Clay, ashlar tile installation



Sea Grape in Clay, ashlar tile installation



## INSPIRING.

The Archipelago collection brings elements of the island and its vegetation to the hospitality interior. Inspired by childhood surroundings and memories of days spent foraging from landscape to sea, these organic structures allow breathing space on the floor. Each pattern brings a combination of loop and tip shear elements that create visual and tactical comfort for guest rooms and public spaces while maintaining long-lasting beauty and durability.

Get more at [millikenfloors.com](https://millikenfloors.com)









Fronde in Volcanic, ashlar tile installation



Sea Grape in Volcanic, ashlar tile installation





**SEG174-204 RIVERBED**  
(Mangrove MAN174-204, Frond FRD174-204, Cassia CAS174-204)



**SEG164-174 BAY**  
(Mangrove MAN164-174, Frond FRD164-174, Cassia CAS164-174)



**SEG164-178 BRACKISH**  
(Mangrove MAN164-178, Frond FRD164-178, Cassia CAS164-178)



**SEG87-174 MARSH**  
(Mangrove MAN87-174, Frond FRD87-174, Cassia CAS87-174)



**SEG45-79 CHANNEL**  
(Mangrove MAN45-79, Frond FRD45-79, Cassia CAS45-79)



**SEG88-79 UNDERTOW**  
(Mangrove MAN88-79, Frond FRD88-79, Cassia CAS88-79)



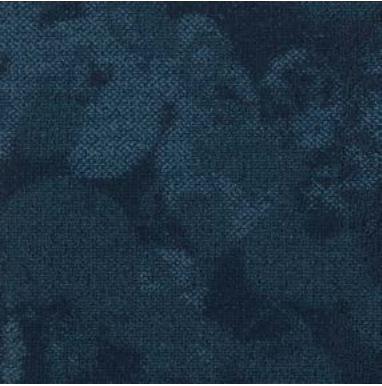
**SEG6-204-171 SAND**  
(Mangrove MAN6-204-171, Frond FRD6-204-171, Cassia CAS6-204-171)



**SEG174-176 CLAY**  
(Mangrove MAN174-176, Frond FRD174-176, Cassia CAS174-176)



**SEG154-174 BOULDER**  
(Mangrove MAN154-174, Frond FRD154-174, Cassia CAS154-174)



**SEG19 LAGOON**  
(Mangrove MAN19, Frond FRD19, Cassia CAS19)



**SEG19-154 COVE**  
(Mangrove MAN19-154, Frond FRD19-154, Cassia CAS19-154)



**SEG125 REEF**  
(Mangrove MAN125, Frond FRD125, Cassia CAS125)



**SEG211-207 GRAIN**  
(Mangrove MAN211-207, Frond FRD211-207, Cassia CAS211-207)



**SEG176-211 PEBBLE**  
(Mangrove MAN176-211, Frond FRD176-211, Cassia CAS176-211)



**SEG176 SHINGLE**  
(Mangrove MAN176, Frond FRD176, Cassia CAS176)



**SEG153 SWASH**  
(Mangrove MAN153, Frond FRD153, Cassia CAS153)



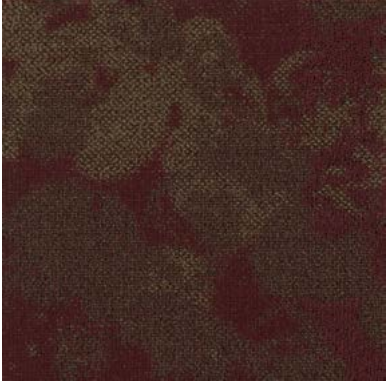
**SEG154-106 INLET**  
(Mangrove MAN154-106, Frond FRD154-106, Cassia CAS154-106)



**SEG107-154 RIPTIDE**  
(Mangrove MAN107-154, Frond FRD107-154, Cassia CAS107-154)



**SEG179-110 RAVINE**  
(Mangrove MAN179-110, Frond FRD179-110, Cassia CAS179-110)



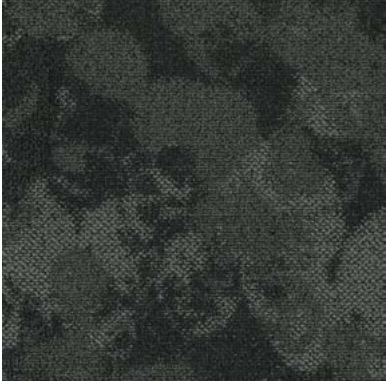
**SEG179-10-69 MESA**  
(Mangrove MAN179-10-69, Frond FRD179-10-69, Cassia CAS179-10-69)



**SEG178-176 CAVERN**  
(Mangrove MAN178-176, Frond FRD178-176, Cassia CAS178-176)



**SEG174-108 SILT**  
(Mangrove MAN174-108, Frond FRD174-108, Cassia CAS174-108)



**SEG119-27-174 CLIFF**  
(Mangrove MAN119-27-174, Frond FRD119-27-174, Cassia CAS119-27-174)



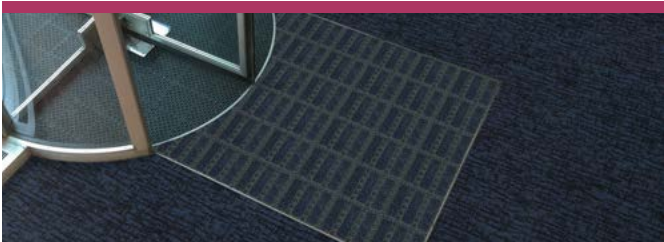
**SEG133-119 VOLCANIC**  
(Mangrove MAN133-119, Frond FRD133-119, Cassia CAS133-119)



# Complete Flooring Solutions



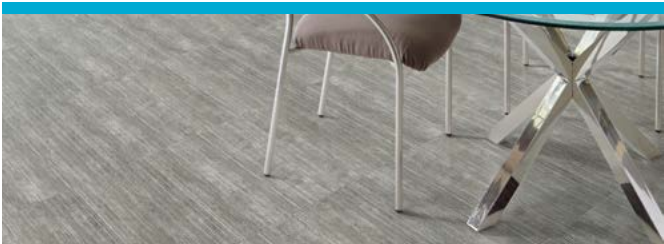
Milliken Floor Covering offers products and expertise in all areas of your commercial spaces, including high-performance entryway systems, broadloom & modular carpet, luxury vinyl tile, and milliCare®. Simplify your flooring needs with a trusted partner that will let you enjoy creating a great space without having to worry about everything else.



## Entry Systems

The OBEX® brand of products offers highly effective, comprehensive modular entry solutions designed as a three-zone barrier system to prevent dirt and moisture from entering the building.

Available in coordinated colors and patterns, OBEX® entry products are engineered to increase the functionality of a building's entrance without forsaking elements of design or aesthetic. Simple and easy to work with, OBEX® offers entry systems that can be recessed or surface-mounted as well as exterior and interior applications.



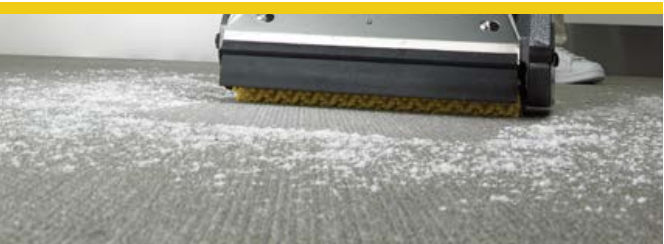
## Luxury Vinyl Tile

From natural looks of wood and stone to more modern textures and abstracts, Milliken's collection of Luxury Vinyl Tile flooring creates new options for a commercial or hospitality interior. Our simple-to-search Color Reference system provides easy coordination of the LVT options to modular and broadloom carpets. From carpet tile to broadloom to planks to LVT, Milliken provides durable and elegant options for your project.



## Broadloom & Modular Carpet

Milliken's broadloom and carpet tile incorporate the latest innovations in tufting and dyeing technology, achieving unique looks and excellent performance. With our Color Reference system, coordinating multiple products across a single project is a snap; whether it's carpet, LVT, or entry systems. All carpet tile products have cushion backing for an extended lifespan, as well as ergonomic and environmental benefits. Broadloom carpet also has cushion-back options, and all are standard with StainSmart®, a proprietary treatment applied to Milliken carpets to repel and protect against stains and enhance soil release.



## milliCare®

We care for the environment with products and a method that improve Indoor Air Quality and reduce water consumption and your carbon footprint. We care about you professionally by saving you time through customized service plans for your entire space provided for by our franchise network. You work healthier and live healthier, and the planet is a better place because of it. We can bring that same quality of care and service to you wherever you are. milliCare takes caring for your flooring and textiles off your to-do list, which means that you get to skip right to the part where you get to lean back, put your hands behind your head, and be a hero for keeping a beautifully cleaned space.



# ARCHIPELAGO

Cassia / Frond / Mangrove / Sea Grape

Images in this brochure are approximate for color and pattern scale. Please use actual carpet samples to make your final selections.

Have you seen our other collections? Visit us online today.



Formwork



Journal



Surface Study



Whale Song



## Construction

Tufted, Tip Shear

## Tile Size

50 cm x 50 cm (19.7" x 19.7")

## Yarn Type

ECONYL® Solution-Dyed Nylon  
Type 6

## Stain Repel & Resist / Soil Release

StainSmart®

## Tufted Face Weight

17 oz/yd<sup>2</sup> (576 g/m<sup>2</sup>)

## Finished Pile Height

0.14" (3.56 mm)

## Finished Pile Thickness

Cassia: 0.074" (1.88 mm)  
Frond: 0.080" (2.03 mm)  
Mangrove: 0.072" (1.83 mm)  
Sea Grape: 0.079" (2.01 mm)

## Average Density

Cassia: 8,319  
Frond: 6,885  
Mangrove: 7,750  
Sea Grape: 7,108

## Standard Backing

PVC-Free Underscore™ ES Cushion  
Underscore™ is available with TractionBack®

## Texture Appearance Retention Rating (TARR)

Heavy

## Recommended Installation Methods



ASHLAR



V. ASHLAR



MONOLITHIC

## TractionBack®

Simplify your modular installation with Milliken's patented TractionBack®, an innovative backing system that is faster, more cost efficient, and environmentally superior to wet adhesives and peel-and-stick carpet tile.



This cushion-back carpet tile product is covered by one or more patents, published applications and/or patents pending. Specifications are subject to normal manufacturing tolerances and may be changed without prior notice.

## Growing greener for over 100 years.

This product has a UL® Environment 3<sup>rd</sup> party verified Environmental Product Declaration (EPD). A copy of the EPD is available online at [millikencarpet.com/epd](http://millikencarpet.com/epd) and [productguide.ulenvironment.com](http://productguide.ulenvironment.com).

Customer Concierge 800.824.2246 | [millikenfloors.com](http://millikenfloors.com)  
© 2015 Milliken & Company | Design © Milliken & Company | Made in the USA

Cover image: *Islands in Andaman sea Thailand,*  
by Iakov Kalinin. © 2016 Shutterstock

2710026500  
CP 0416