

ECOUSTIC® BLADE CEILING TILE



unika vaev
INSTYLE

Hear yourself think®

ECOUSTIC® BLADE CEILING TILE FINISHES



Alp Foil



Pike Foil



Quest Foil



Ramble Foil



Bluff Foil



Dome Foil



Trek Foil



Intrepid Foil



Mesa Foil

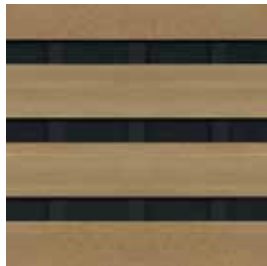


Nevada Foil

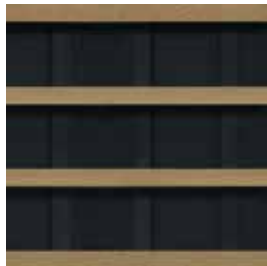
ECOUSTIC® BLADE CEILING TILE PROFILES (GRID SIZE)



3018-14 ($1\frac{5}{16}$ "



2560-7 ($1\frac{5}{16}$ "



6018-9 ($1\frac{5}{16}$ "



3018-17 ($\frac{9}{16}$ "



1830-13 ($\frac{9}{16}$ "



2560-8 ($\frac{9}{16}$ "

Custom profiles are available subject to minimum order quantities which can be quoted at time of the inquiry

Please Note: Wood grain and color may vary between samples
Product is not shown to scale
Product may vary in color due to the nature of the media
Additional finishes are available upon request

unika vaev
INSTYLE

ECOUSTIC® BLADE CEILING TILE



DESCRIPTION An acoustic modular ceiling tile combining superior sound absorption with an elegant wood aesthetic.

CONTENT MDF core with a foil wrapped digitally printed wood grain finish with black acoustic scrim backing

TILE DIMENSIONS Available in two tile sizes to fit 24" x 24" and 48" x 24" ceiling grids. Designed for use in a standard 15/16" and 9/16" two-way ceiling grids

APPLICATION Ceiling

FIRE RATINGS ASTM E84 Class A
AS/ISO 9705 (AS 5637.1)
NCC BCA Group 2

ENVIRONMENT Low VOC & PVC free

ACOUSTIC *Tested with a 15.75" air gap*
1830-13 Base NRC 0.5 | With Infill NRC 0.8
3018-14 Base NRC 0.5 | With Infill NRC 0.8
3018-17 Base NRC 0.55 | With Infill NRC 0.85
3060-7* Base NRC 0.45 | With Infill NRC 0.75
**Indicitive test for 2560-7*
3060-8* Base NRC 0.4 | With Infill NRC 0.65
**Indicitive test for 2560-8*
Graphs can be found on final page

APPLICATION Ceiling

CUSTOM PROFILES Custom profiles are available subject to minimum order quantities which can be quoted at time of the inquiry Please refer to final page of this document for instructions

Versatile Installation: 48" x 24" tiles conceal the ceiling grid and can be arranged as a continuous linear system, 24" x 24" tiles can be installed in both a linear and a checkerboard pattern. 3018-14 ceiling tile aligns with 3018-7 panel, 2560-8 ceiling tile aligns with 2560-4 panel, providing potential for vertical to horizontal blade alignment in ceiling to wall installations.

Ecoustic® Infill: Available for increased broadband sound absorption including critical human speech range frequencies.

Ideal for New + Existing Construction: Designed for use on ceilings, ecoustic® Blade is ideal for any interior space to maximize sound-absorption.

Easy to Install: Designed for modularity, Blade is pre-finished allowing for simple efficient installation and ease of ongoing maintenance. The design results in a linear wood finish with minimal onsite labor for installation.

Building Rating Systems: Blade will contribute the following points for Green Star, LEED + WELL building standards.

Criteria	Green Star	LEED	WELL
Low VOC	√	√	√
Recycling Program	-	-	N/A
3rd Party Certification	-	-	-
Toxic Material Reduction	N/A	N/A	√

HOW TO SPECIFY

DESIGN	ecoustic® Blade Ceiling Tile
PROFILE	3018-14, 3060-7, 3018-17, 1830-13, 3060-8
PANEL SIZE	24 Tile or 48 Tile
FINISH	Select from 10 Finishes
ECOUSTIC® INFILL	Optional - order seperately

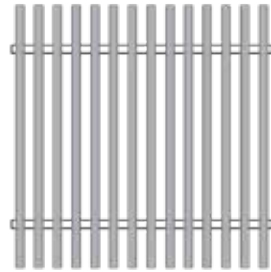
ECOUSTIC® BLADE CEILING TILE SECTION VIEW

SECTION A-A



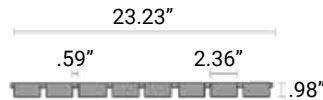
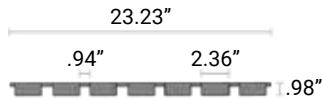
3018-14
15/16" ceiling grid

Aligns with 3018-7 Panel
14 blades per tile
24" Tile - 8 per box
48" Tile - 4 per box



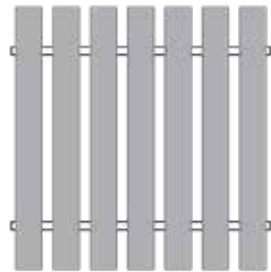
3018-17
9/16" ceiling grid

17 blades per tile
24" Tile - 8 per box
48" Tile - 4 per box



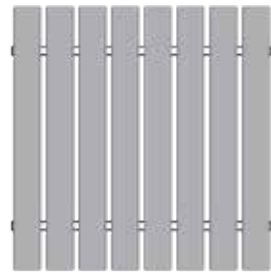
2560-7
15/16" ceiling grid

7 blades per tile
24" Tile - 8 per box
48" Tile - 4 per box



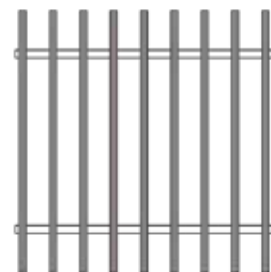
2560-8
9/16" ceiling grid

Aligns with 2560-4 Panel
8 blades per tile
24" Tile - 8 per box
48" Tile - 4 per box



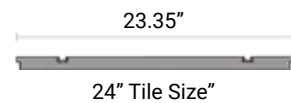
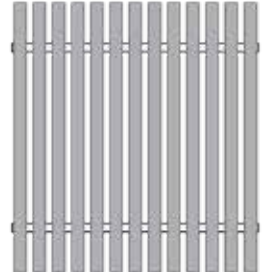
6018-9
15/16" ceiling grid

9 blades per tile
24" Tile - 4 per box
48" Tile - 2 per box



1830-13
9/16" ceiling grid

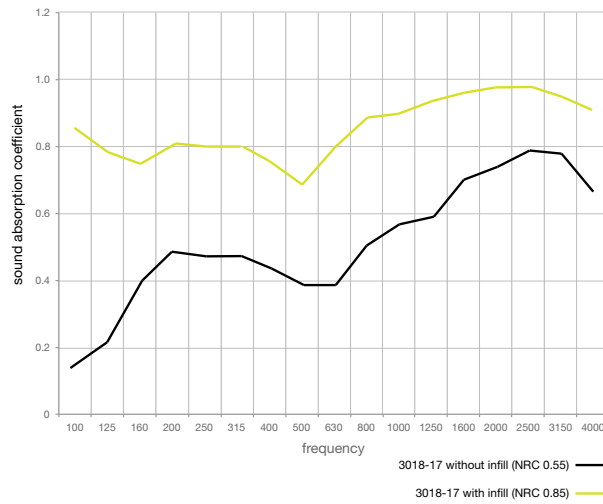
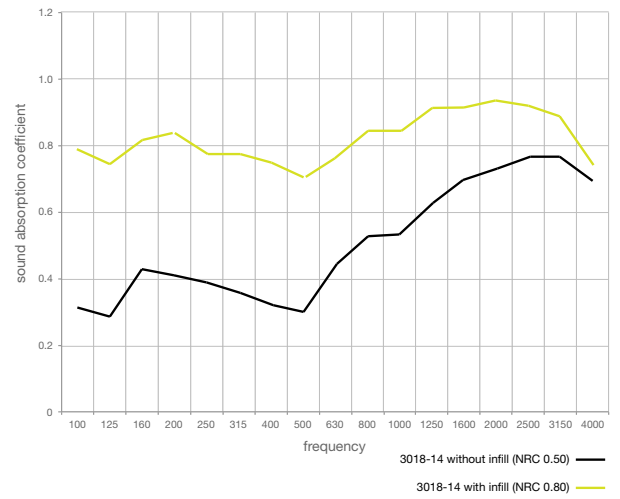
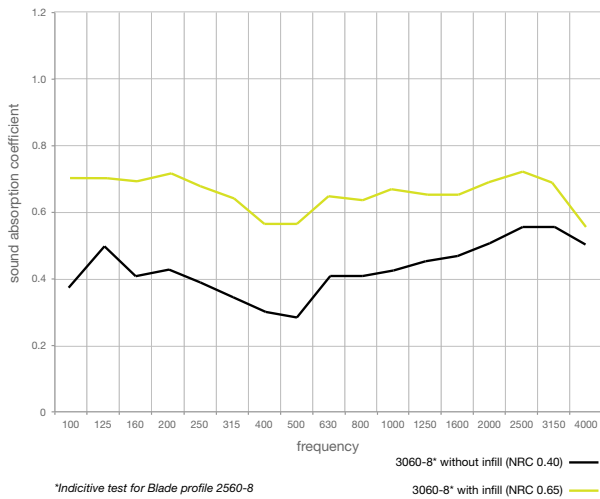
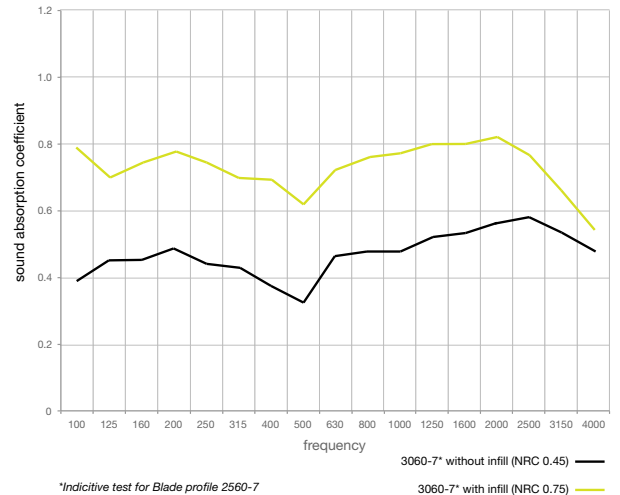
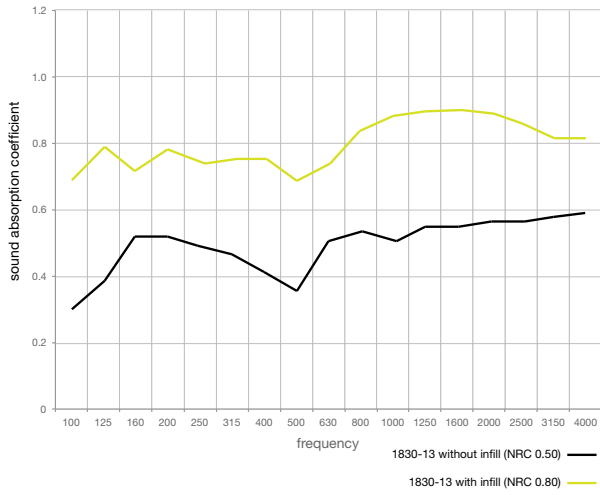
13 blades per tile
24" Tile - 8 per box
48" Tile - 4 per box



24" Tile Size"

48" Tile Size"

ECOUSTIC® BLADE CEILING TILE ACOUSTIC



ECOUSTIC® BLADE MAINTENANCE

ecoustic® Blade surfaces are easy to clean using a cloth dampened with warm water and detergent. If in doubt about a particular cleaner or detergent, check with its manufacturer for the suitability. We recommend you test on a small area or sample prior to applying to the surface.

- Avoid the use of acetone or trichloroethylene for cleaning purposes.
- The use of abrasive cleaners, powders, scouring pads, steel wool, sandpaper, etc. may damage the finish and make the surface susceptible to staining.
- Accidental spills or splatters from these harsh materials should be wiped off immediately, and the area cleaned thoroughly with a damp cloth.
- Examples of these materials are: Ceramic cooktop cleaners, tub and tile cleaners, chlorine bleach, oven cleaners, and harsh detergents.

Avoid dragging or hitting heavy objects against the surface.

Please Note: The information, opinions, advice and recommendations provided have been prepared with due care. They are offered only for the purpose of providing some useful and helpful assistance to specifiers and their clients. While every effort has been made to ensure that this is in accordance with current technology, it is not intended as an exhaustive statement of all relevant knowledge.