

**DOMO WALL**



**unika vaev**  
**abstracta**

Hear yourself think®

# DOMO WALL COLORS

## STANDARD OPTIONS

### Salsa



(30) light grey



(31) blue



(32) dark middle grey



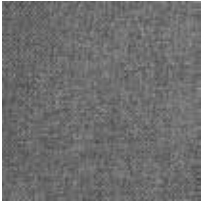
(33) yellow



(34) dark yellow



(35) dark green



(36) middle grey



(39) pink



(40) dark blue



(54) light pink



(55) green



(56) brown

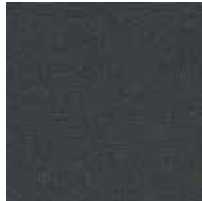


(57) beige

### Dox



(50) black



(51) dark grey



(52) middle grey



(53) light grey

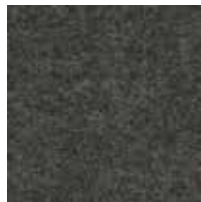
### Focus Mélange



60309



60311



60312



61240



66209



68249

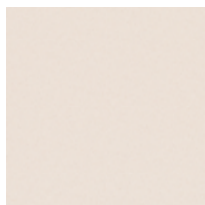
Lead times are contingent on color/finish availability  
Product may vary in color due to the nature of the media  
Please refer to website for current color range + larger sample swatch

**unika vaev**  
**abstracta**

# DOMO WALL COLORS

## STANDARD OPTIONS

### Event



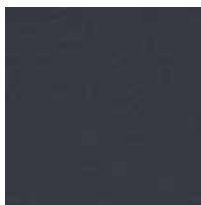
60000 crisp white



60002 steel



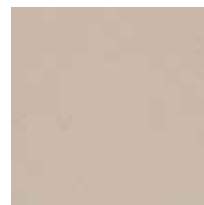
60004 gravel



60021 anchor



60999 onyx



61008 flax



61011 saddle brown



62048 light olive



62093 pebble sand



62095 honey dijon



62096 sunflower



63013 rust



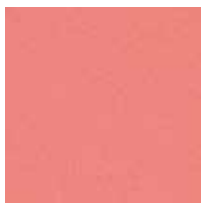
64029 rhubarb red



64119 persian red



64146 pink berry



64183 rose crepe



65112 lavender dream



66006 feeling royal



66030 blue pansy



66031 powder blue



66188 deep lavender



67015 pale turquoise



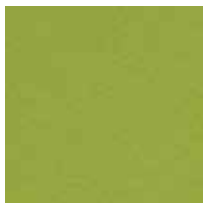
67017 soft azure



67042 teal ocean



67070 carolina



68145 pear



68146 jade

Lead times are contingent on color/finish availability  
Product may vary in color due to the nature of the media  
Please refer to website for current color range + larger sample swatch

**unika vaev**  
**abstracta**

# DOMO WALL COLORS

## NON-STANDARD OPTIONS

### Focus Mélange



Lead times are contingent on color/finish availability  
Product may vary in color due to the nature of the media  
Please refer to website for current color range + larger sample swatch

**unika vaev**  
**abstracta**

# DOMO WALL COLORS

## NON-STANDARD OPTIONS

### Focus

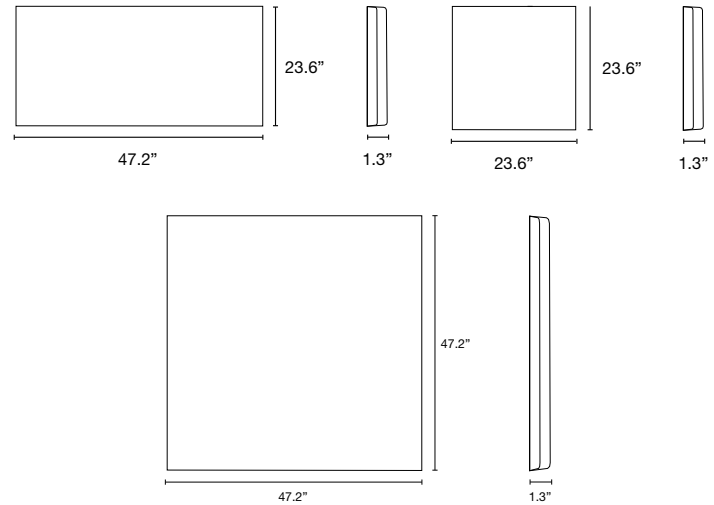


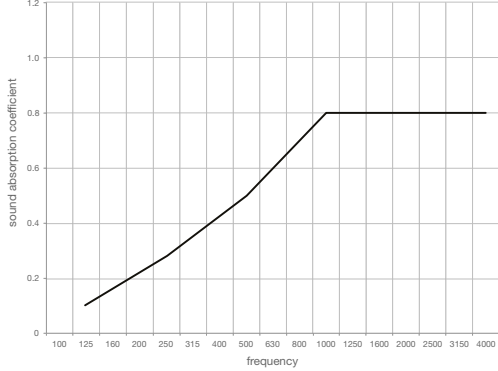
Lead times are contingent on color/finish availability  
Product may vary in color due to the nature of the media  
Please refer to website for current color range + larger sample swatch

**unika vaev**  
**abstracta**



# DOMO WALL



DESIGNER	Stefan Borselius
CONTENT	Core: 100% Polyester Frame: 100% Pine Cover: Focus- 100% NZ Wool Salsa- 100% Polyester Dox- 100% Polyester
DIMENSIONS	23.6" (w) x 23.6" (h) x 1.3" (d) 47.2" (w) x 47.2" (h) x 1.3" (d) 47.2" (w) x 23.6" (h) x 1.3" (d)
FLAMMABILITY	Inquire
ACOUSTIC	NRC: 0.55 
APPLICATION	Wall
DESCRIPTION	The full elegance of Stefan Borselius's Domo Wall is revealed when multiple tiles are combined on one wall. A beautiful interplay of light and shadows then emerges from the meeting of their beveled edges. Sound absorbent filling is contained within square or rectangular wood framed panel components that are upholstered in several options.

BENEFITS	<p><b>Designed for the Environment:</b> Domo is manufactured on the basis of technical, environmental and production ethical requirements. There are no emissions to air, water or land during the production of Domo. The sound-absorbent core of Domo contains recycled materials. Domo Wall is recyclable.</p> <p><b>Ease of Installation:</b> Hidden mounting bars are used behind the panel which are bolted to the wall. Domo Wall tiles can be installed in vertical or horizontal arrangements, and available in three sizes, allowing for many installation formations.</p> <p><b>Improved Sound Absorption:</b> Domo Wall is ideal for high frequency absorption and achieves an NRC 0.55 rating when directly fixed to a wall.</p> <p><b>Care:</b> To preserve the fabric color and appearance of the fabric, Domo should be vacuumed regularly with a soft nozzle. Details for the different fabric coverings below:</p> <ul style="list-style-type: none"><li><b>Polyester Stain Removal:</b> Use uncolored paper towel or cloth to soak up as much as possible of the stain. Dried stains should be vacuumed. Moisten the stain lightly with a clean white cotton cloth, luke-warm water and possibly a small amount of pH-neutral detergent. Press a dry cloth or uncolored paper towel against the fabric so that moisture and dirt are absorbed. Repeat until the stain is gone. Use clean water without detergent at the last moistening. Finish with soaking.</li><li><b>Wool Stain Removal:</b> Dab or wipe gently with a moist cloth</li></ul>
----------	---