

# ShawContract®

## Copy Tile

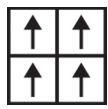
Product Type	<b>Carpet Tile</b>
Collection	<b>Cut + Compose</b>
Style Number	<b>5T103</b>
Construction	<b>Multi-Level Pattern Loop</b>
Fiber	<b>Solution Q Extreme® Nylon</b>
Dye Method	<b>100% Solution Dyed</b>
Primary Backing	<b>Synthetic</b>
Secondary Backing	<b>Ecworx® Tile</b>
Protective Treatments	<b>Inherent Stain Resistance</b>
Recommended Adhesive	<b>LokWorx+ Carpet Tile Adhesive, Shaw 5100, Shaw 4151, LokDots, LokWorx Adhesive Tabs, Shaw 3800 or LokWorx Carpet Tile Adhesive</b>

	u.s.	metric
Product Size	<b>24 in x 24 in</b>	<b>61 cm x 61 cm</b>
Area per Carton	<b>48 ft<sup>2</sup></b>	<b>4.46 m<sup>2</sup></b>
Pieces per Carton	<b>12 pcs</b>	
Gauge	<b>1/12 in</b>	<b>47.2 per 10 cm</b>
Stitches	<b>9.5 per in</b>	<b>38.0 per 10 cm</b>
Finished Pile Thickness	<b>0.093 in</b>	<b>2.36 mm</b>
Average Density	<b>6968 oz/yd<sup>3</sup></b>	<b>0.258 g/cm<sup>3</sup></b>
Kilotex		<b>9.71</b>
Total Thickness	<b>0.223 in</b>	<b>5.66 mm</b>
Tufted Weight	<b>18 oz/yd<sup>2</sup></b>	<b>610.3 g/m<sup>2</sup></b>

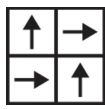


Product permits installation with various dye lots.

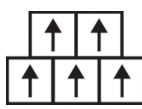
## Recommended Installation Method



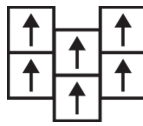
**Monolithic**



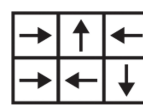
**Quarter Turn**



**Brick**



**Ashlar**



**Random**

## Performance + Testing

Radiant Panel	<b>Class I</b>	
NBS Smoke	<b>Less Than 450</b>	
Electrostatic Propensity	<b>Less Than 3.5 kv</b>	
CRI Green Label Plus (GLP)	<b>CRI Green Label Plus (GLP)   GLP9968</b>	
Pill Test	<b>Pass*</b>	*Pill test data is based on style
ADA Compliance	<b>&gt;0.6, meets the recommended static coefficient of friction for ADA walking surfaces and accessible routes***</b>	

Test Reports may be included or listed by the manufacturing/inventory style number as opposed to the noted selling style number.

## Warranties

[Lifetime Commercial Limited Warranty](#)

## Coordinating Products

Carpet Tile: **Construct Tile, Rotate Tile**

Corporate Headquarters +1 800 257 7429 | +1 706 532 7984 | Atlanta +1 404 853 7429 | Bengaluru +91 80 6773 0202 | Beijing +86 10 6568 588 | Chicago +1 312 467 1331 | Dubai +971 4 584 6956 | Hong Kong +852 2623 0371 | Latin America (Miami) +1 305 827 5912 | London +44 207 961 4120 | Los Angeles +1 800 233 1614 | Melbourne +61 3 9939 8543 | Mexico City +55 5010 7600 | Mumbai +91 22 6284 5050 | Nantong +86 400 800 7429 | New York +1 212 953 7429 | Paris +33 (0) 1 81 22 44 39 | San Francisco +1 415 955 1920 | Santiago +562 2431 5000 x 550 | São Paulo +55 11 3071 1702 | Shanghai +86 21 3338 4000 | Singapore +65 6733 1811 | Sydney +1 800 556 302

© 2023 Shaw Industries Group, Inc., a Berkshire Hathaway Company  
March 29, 2023

1 of 3

## Leed v4 Contribution Credits

MR Credit: Building Product Disclosure and Optimization  
Environmental Product Declarations - Option 1: Environmental Product Declaration (EPD)

MR Credit: Building Product Disclosure and Optimization  
Material Ingredients - Option 1: Material Ingredient Reporting

MR Credit: Building Product Disclosure and Optimization  
Material Ingredients - Option 2: Material Ingredient Optimization

MR Credit: Building Product Disclosure and Optimization  
Sourcing of Raw Materials - Option 2: Leadership Extraction Practices

EQ Credit: Low Emitting Materials  
Option 1: Product Category Calculations

MR Credit: Interiors Life-Cycle Impact Reduction  
Option 3: Design for Flexibility

**3rd Party Certified in Accordance with ISO14044, ISO14025 & EN15804**

**C2C Silver Level (Version 3.1)**

**3rd Party Certified in Accordance with ISO14044, ISO14025 & EN15804**

**Environmental Guarantee: Through Our Environmental Guarantee, Shaw Pledges to Transport And Recycle Any Ecoworx Carpet Within The United States And Canada At No Cost to The Customer.**

**Green Label Plus Certification: GLP9968**

**Ecworx Tile with Lokdots Installation System**

## Material Health & Environmental Certifications

Certifications below apply exclusively to the carpet tile rug itself and not the LokWorx Tabs adhesive

### Health & Wellbeing

Material Ingredient Transparency

**Cradle to Cradle Certified® | Silver Level (Version 3.1)**  
**Health Product Declaration (HPD) | 1,000 ppm Disclosure**  
**Living Building Challenge (LBC) | Free of Red List Chemicals**  
**Declare | LBC Compliant**  
**NSF 140 | Gold**  
**CRI Green Label Plus (GLP) | GLP9968**

Indoor Air Quality

### Climate Impact

Environmental Product Declaration (EPD)

Total Recycled Content

Product Packaging

**3rd Party Certified in Accordance with ISO14044, ISO14025 & EN15804**

**38% (Pre-Consumer 38% | Post-Consumer 0%)**

**100% Recyclable**

### Global Product Assessment

**Singapore Green Label | Certified**

**GSA | Approved**

**CE Marking (EN 14041) | 3rd Party Certified**

**Environmental Guarantee\* | Through Our Environmental Guarantee, Shaw Pledges to Transport And Recycle Any Ecoworx Carpet Within The United States And Canada At No Cost to The Customer.**

**Country of Origin\*\* | USA**

## Additional Information

\* To learn more about the recyclability of our products and our re[TURN], please visit [shawcontract.com/sustainability](https://shawcontract.com/sustainability).

\*\*Meets or exceeds all local and national regulations in country of manufacture.

\*\*\*This carpet is manufactured to be ADA compliant, but to be fully ADA compliant, the end-user must ensure the carpet is adhered to the floor and installed as outlined in the ADA standards.

[Installation Guidelines](#)

[Maintenance Guidelines](#)

Specifications are subject to nominal manufacturing variance. Material supply and/or manufacturing processes may necessitate changes without notice.

This product is an exclusive design and may not be duplicated in any manner. Use of this design in the creation of another product design is also strictly prohibited.

Visit [shawcontract.com/testing](https://shawcontract.com/testing) for more information.

