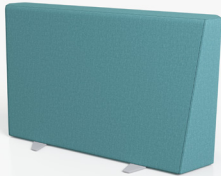




# Flowform® Soft Seating

## Bench Divider - Straight

MODEL#: 55006



### OVERVIEW

Flowform Soft Seating from Smith System helps create unique collaborative interaction spaces for kids of all ages. Flowform soft seating available in 4 shapes, with 2 divider wall sizes to create barriers - when space is needed.

### MATERIALS

The frame is constructed of durable 18mm birch plywood veneers, each piece interlocking with adjacent pieces to create sturdy load bearing connections. 26" high divider walls feature a bolt-on 1/4" thick steel outrigger for stability. Thermoplastic polyester fiber upholstery batting minimizes telegraphing of the framework through the vinyl exterior. The seating pad is made from flexible polyurethane foam, meeting FR CA117 standards and contains no added flame retardant chemicals.

The fabric is Designtex 100% vinyl, phthalate free, with a Polyester backing. Highly durable with a 1,000,000 Wyzenbeek double rub (CD) rating. The fabric is easily cleanable with a 10:1 Water: Bleach mixture.

**WEIGHT CAPACITY** 2 user up to 250 lbs. each.

### STANDARD VINYL COLOR OPTIONS



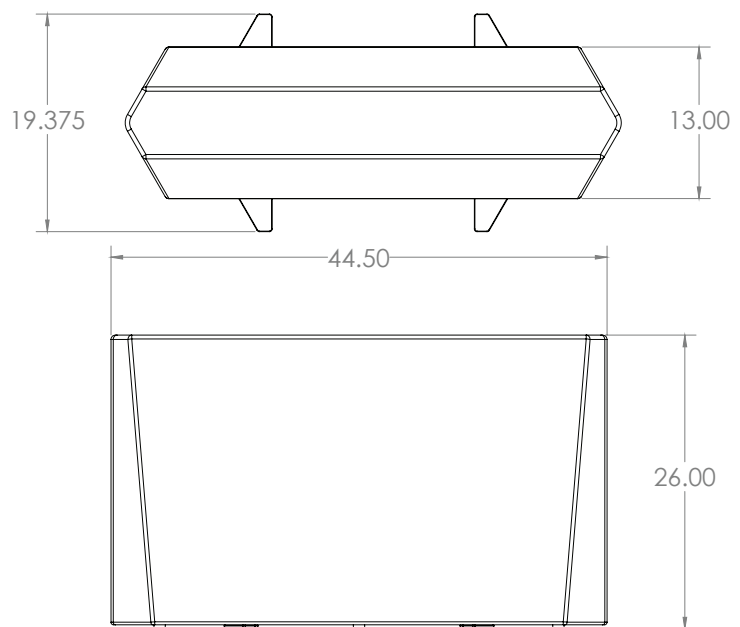
### VINYL COLOR OPTIONS WITH LEAD TIME:



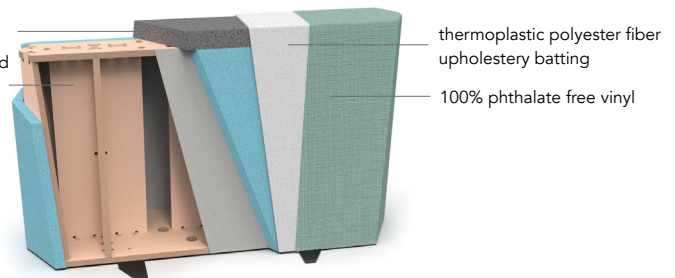
Custom Materials Program Available – Contact Us for Details

### DIMENSIONS

Model	Description	D"	W"	H"	F.C.	Cube	WT
55006	Bench Divider - Straight	13	44.5	26	250	37	58



seating pad -  
flexible polyurethane foam  
18mm birchwood; interlocked  
at adjacent connections.



### DESIGNTX

PATTERN	Alphabet
CONTENT	100% Vinyl
BACKING	Polyester, Knit
FLAME RESISTANCE	CA Bulletin 117-2013
DURABILITY	1,000,000 D. R.
MAINTENANCE	W: Bleach Cleanable (10:1)
FINISH	Advanced Protective Topcoat