



# Silhouette® Sit+Stand

## Small Rectangular Student Desk

MODEL#: 01630



### OVERVIEW

With Sit - Stand, student's have the flexibility to choose their preferred position: sitting or standing. Styled to match the current line of Silhouette tables and desk, this mobile desk comes with lockable casters and angled legs to allow feet placement underneath desk.

### MATERIALS

The 3/4" thick WORK SURFACE consists of a 45 lb density particle board core with a 0.030" high pressure laminated surface and a 0.020" melamine backer sheet. The edge of the tabletop features your choice of a bullet t-mold edge or 4mm t-mold, which is then fastened to the underside of the work surface every 6 to 8 inches to assure a long lasting fit.

The BASE is constructed of cold rolled steel and the COLUMN is a combination of steel, aluminum, and plastic.

### SUGGESTED LAMINATE OPTIONS



### STANDARD EDGE COLORS

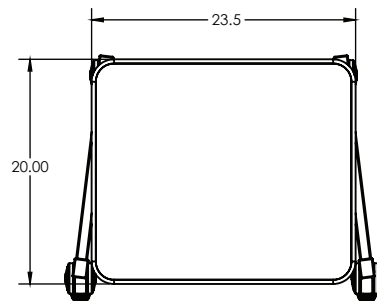
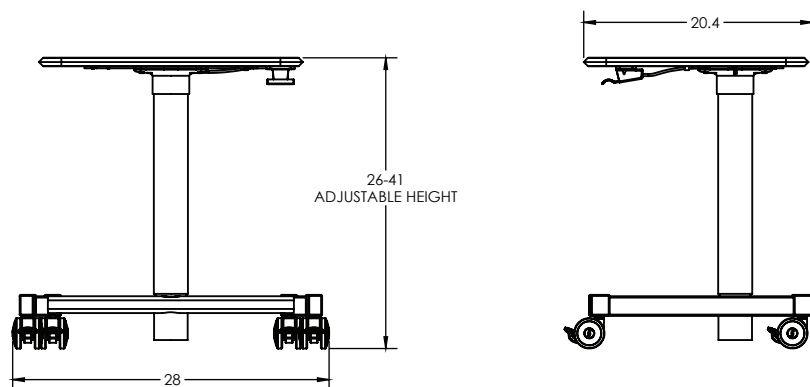


### FRAME COLOR

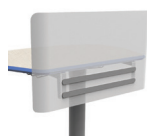


### DIMENSIONS

Model	Description	D"	W"	H"	F.C.	Cube"	WT"
01630	Silhouette® Sit+Stand Desk	20.4	28	26-41	125	7.56	41
	Top Dimensions	20	23.5				



### OPTIONAL ACCESSORIES



Model: 60099  
Modesty Panel

Product Dimensions: 24x18x2  
Freight Class: 70  
Cube: 2.5



Model: 76518  
Technology Basket, low profile storage

Product Dimensions: 10x14x3  
Freight Class: 70  
Cube: 1.44