

# GyroShift 1" Cylinder

## 10W LED Pendant/Flush Mount (Round)

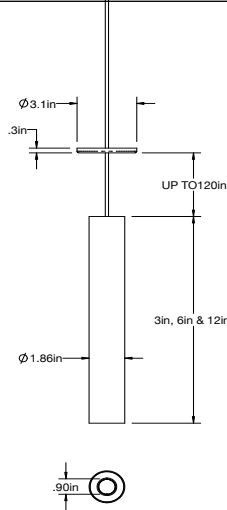
Catalog #:

Project:

Notes:

Type:

Date:



### STANDARD FINISHES

<b>ABL</b> (Aegean Blue)	<b>PNC</b> (Painted Natural Copper)
<b>BB</b> (Burnished Bronze)	<b>RD</b> (Red)
<b>BK</b> (Gloss Black)	<b>SGR</b> (Sage Green)
<b>BLU</b> (Blue)	<b>SND</b> (Sand)
<b>DVG</b> (Dove Gray)	<b>SS</b> (Satin Silver)
<b>FLG</b> (Flannel Gray)	<b>TBZ</b> (Textured Bronze)
<b>GA</b> (Galvanized)	<b>TGP</b> (Textured Graphite)
<b>GWT</b> (Gloss White)	<b>TNG</b> (Tangerine)
<b>LG</b> (Lime Green)	<b>TTL</b> (Tahitian Teal)
<b>MB</b> (Matte Black)	<b>WT</b> (Semi Gloss White)
<b>MBL</b> (Midnight Blue)	<b>YEL</b> (Yellow)
<b>PNA</b> (Painted Natural Aluminum)	

### Performance Data

CCT	CRI	Wattage	Delivered Lumens	Efficacy
3000	90 CRI	11W	650 lm	60 lpw

\*Based on 3500K 90CRI 30deg optic configuration at 120VAC input  
Lumens will vary depending on CCT, optic & lens option

### Specifications

#### Field Replaceable LED Light Engine

- 10W LED delivers 650lm
- 2700K, 3000K, and 3500K
- 80 or 90 CRI Options
- 35° adjustability with 360° aiming
- Available in 3", 6", and 12" lengths
- ELV/Triac 0-10V dimming 1-100%

#### 6 Different Mounting Options

- Stem Mount
- Stem Mounted Integral Driver
- Cord Mount
- Cord Mount Remote Driver
- Cord Mount Integral Driver
- Flush Mount Remote Driver

#### Finishes

Available in many colors with optional coastal coating to protect finish in coastal environments

#### Mounting

4' of stem included: (1) 6", (2) 12" & (1) 18" (includes couplers)

#### Listing / Warranty

- Five (5) year limited warranty
- UL listed to US and Canadian standards for damp location - E327611
- UL listed to US and Canadian standards for damp locations
- Meets CEC Title 24 JA8 High Efficacy LED requirements



#### Notes:

- 80 CRI options not compliant with CEC Title 24 requirements
- Only NL media option is listed with Energy Star and meets CEC Title 24 requirements

### Order Matrix

#### GyroShift™ 1" Pendant Cylinder (Example: LP1-SFT-30-90-6-50-WT-NL-ST)

Series	CCT	CRI	Fixture Length	Beam Angle	Finishes	Coastal Coating Option	Media	Mounting Type
LP1-SFT- (Round)	27 (2700K)	80- (80 CRI)	3- (3" length)	30- (30°)	ABL	(blank) (No coating)	-NL (No Lens)	ST (Stem Mount)
	30 (3000K)	90- (90 CRI)	6- (6" length)	50- (50°)	BB	-C (Coating)	-CL (Clear Lens)	STI (Stem Mount Integral Driver)
	35 (3500K)		12- (12" length)		BK		-FR (Frosted Lens)	CD (Cord Mount)
					BLU		-MP (Solite Lens)	CDR (Cord Mount Remote Driver)
					DVG		-LS (Linear Spread)	CDI (Cord Mount Integral Driver)
					FLG		-WW* (Wall Wash)	FMTR (Flush Mount Remote Driver)
					GA			
					GWT			
					LG			
					MB			
					MBL			
					PNA			
					PNC			
					RD			
					SGR			
					SND			
					SS			
					TBZ			
					TGP			
					TNG			
					TTL			
					WT			
					YEL			

# GyroShift 1" Cylinder

## 10W LED Pendant/Flush Mount (Round)

Catalog #:

Project:

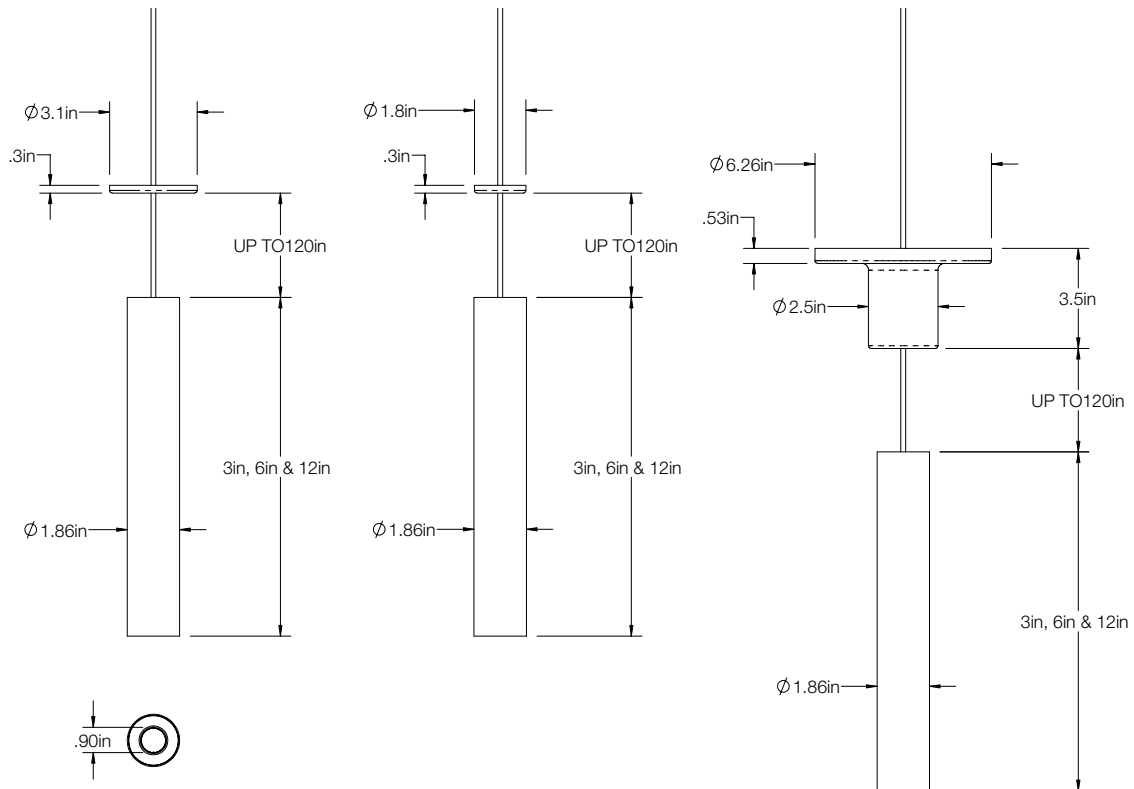
Notes:

Type:

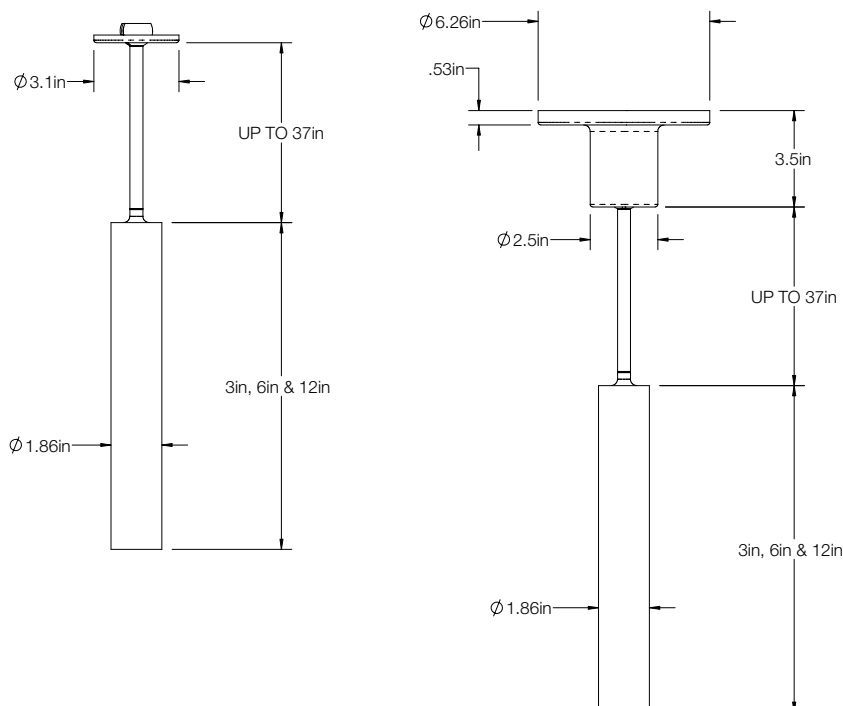
Date:

### Dimensions

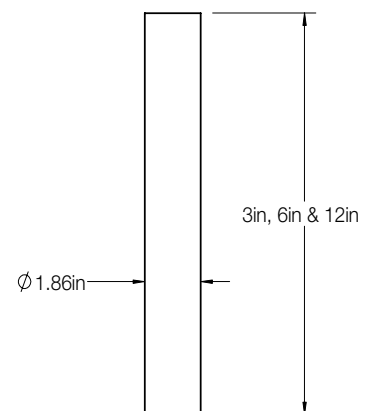
#### Cord Mount Diagrams



#### Stem Mount Diagrams



#### Flush Mount Diagram



# GyroShift 1" Cylinder

## 10W LED Pendant/Flush Mount (Round)

Catalog #:

Project:

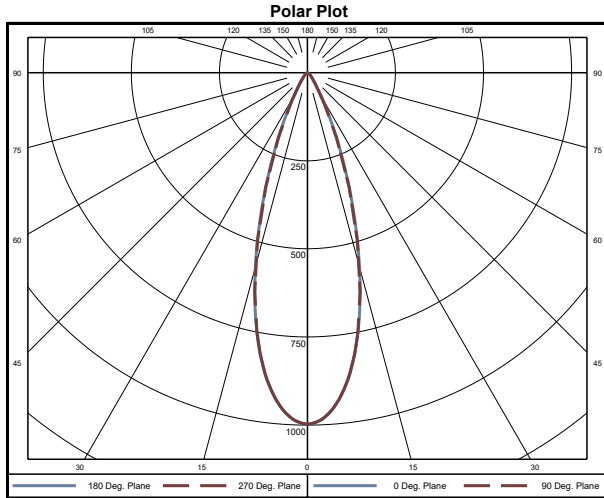
Notes:

Type:

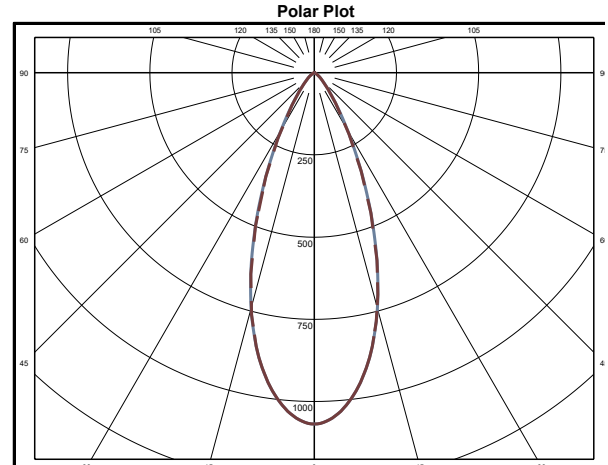
Date:

### PHOTOMETRY

GyroShift 1" Cylinder / 30° Optic



GyroShift 1" Cylinder / 50° Optic



### LUMEN CHART

GYROSHIFT™ 1" CYLINDER

	90CRI		80CRI		Wattage:
	30°	50°	30°	50°	
3500K	650	641	813	802	10.8
3000K	650	641	754	743	
2700K	606	598	702	692	

### EFFICACY CHART

GYROSHIFT™ 1" CYLINDER

	90CRI		80CRI	
	30°	50°	30°	50°
3500K	60	59	75	74
3000K	60	59	70	69
2700K	56	55	65	64

# GyroShift 1" Cylinder

## 10W LED Pendant/Flush Mount (Round)

Catalog #:

Project:

Notes:

Type:

Date:

### COMPATIBLE DIMMER CHARTS

#### COMPATIBLE PHASE CUT DIMMERS AND DIMMING RANGE

Manufacturer	Model	Manufacturer	Model
Cooper	DAL06P	Lutron	CT103P
	DLC03P		DV600P
	SLC03P		DVCL-153P
Leviton	6161		DVEL303P
	6631-2		FAELV500
	6633-P		LG600P
	6673-10W		MAELV600
	6683-IW		S600P
	IPE04		S-603PG
	IPI06-1LZ		SELV300P
	VPE06		TG-600P
Lightolier	ZP26QEW		TGCL-153P

#### COMPATIBLE 1-10V DIMMERS AND DIMMING RANGE

Manufacturer	Model
Leviton	IP740-DLZ
Lightolier	ZP600FAM120
	V2000FAMU
Lutron	DVTV
	NTFTV
Crestron	CLS-EXP-DIMFLV
	DIN-4DIMFLV4
	DIN-A08
	GLX-DIMFLV8