

CATALOG#:

PROJECT:

FIXTURE

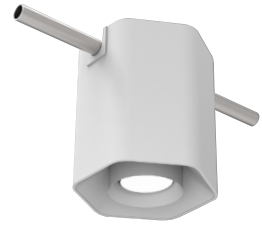
TYPE:

CONTACT:

PHONE:

Wattage	CCT	Delivered Lumens	Efficacy
10W	3000K	966lm	97lpw
15W	3000K	1437lm	96lpw
20W	3000K	1739lm	87lpw
25W	3000K	2049lm	82lpw
30W	3000K	2254lm	75lpw
10W	1850-300K	608lm	61lpw

Lumens will vary depending on CCT, optic & lens option



DESCRIPTION

Architectural light fixture designed for open ceilings with junction boxes and surface mounted conduit. Shift Hex Cloak is perfect for offices, lofts, and open ceilings.

MAIN FEATURES

- 30W option delivers over 2200lm
- 2700K, 3000K, 3500K, 4000K, and warm dimming
- 10°, 30°, and 50° field replaceable optics
- 45° adjust-ability with ∞° rotation
- ELV, Traic, 0-10V dimming as a standard
- Lutron and eldoLED drivers also available
- Accommodates (2) accessories
- Can be installed on sloped ceilings up to 45°

EASY TO ADJUST

Just loosen the bezel and point the GyroShift optic in any direction. Tighten the bezel to lock position.

EASY TO INSTALL

GyroShift was designed with ease of installation in mind. The fixture installs over 4"x1-1/2" Deep octagon J-Box (by others). Power can be fed to additional units through surface mounted conduit (junction boxes and conduit not included).

MOUNTING OPTIONS

- Stem kit with (1) 6", (2) 12", and (1) 18" stems
- Field cuttable cord suspended (10' included).
- Surface mounted with conduit slots
- Surface mounted without conduit openings

FINISHES

Available in 22 standard finishes with optional coastal coating (protects fixture in mineral rich coastal environments).

LISTING/WARRANTY

- Five year limited warranty
- UL listed to US and Canadian standards for damp locations
- JA8 and title 24 compliant



Housing Order Matrix (Example S-HEX-CFL-10S279010-BKKBKKBK-CLCL-00)

Housing	Installation Type	Wattage	Driver	CCT	CRI	Optic
S-HEX	-FL (Flush Mount)	-10 (10W)	S' (ERP, Universal Dim, Triac/ELV/0-10V 1% 120-277V)	27 (2700K)	80 (CRI)	10 (Spot)
	-CFL (Conduit Flush Mount)	-15 (15W)	L3 (Lutron Hi-lume® Fade-to-Black 1% 120-277V)	30 (3000K)	90 (CRI)	30 (Narrow Flood)
	-CSS² (Conduit Suspended Stem)	-20 (20W)	EL1 (eldoLED DALI 1% 120-277V)	35 (3500K)		50 (Flood)
	-CSC³ (Conduit Suspended Cable)	-25 (25W)	EL2 (eldoLED 0-10V 1% 120-277V)	40 (4000K)		
	-SS² (Suspended Stem)	-30 (30W)		WD* (Warm Dim)		
	-SC³ (Suspended Cable)					
				*Note: Warm dim max wattage is 10W	*Note: Default for Warm Dim	

1. Forward and reverse phase dimming at 120V only
2. 4' of stem kit: (1) 6", (2) 12" & (1) 18"
3. 10' Cable

4. Remote driver only for flush and conduit flush options

CONTINUED ON PAGE 2

KEY: STANDARD FINISHES

ABL (Aegean Blue)	GA (Galvanized)	PNC (Painted Natural Copper)	TGP (Textured Graphite)
BB (Burnished Bronze)	GWT (Gloss White)	RD (Red)	TNG (Tangerine)
BK (Gloss Black)	LG (Lime Green)	SGR (Sage Green)	TTL (Tahitian Teal)
BLU (Blue)	MB (Matte Black)	SND (Sand)	WT (Semi Gloss White)
DVG (Dove Gray)	MBL (Midnight Blue)	SS (Satin Silver)	YEL (Yellow)
FLG (Flannel Gray)	PNA (Painted Natural Aluminum)	TBZ (Textured Bronze)	



Gyro Shift Hex Cloak

Performance meets architecture
Surface Mount/ Suspended Mount

CONTINUED FROM PAGE 1

Housing Order Matrix (Continued Example S-HEX-CFL-10S279010-BKKBKBLK-CLCL-00)

Body Finish	Reflector Finish	Bezel Finish	Ball Finish	Coastal Coating Option	Media	Media 2	Rev
-ABL (Aegean Blue)	ABL	ABL	ABL	(blank) (No coating)	-NL (No Lens)	NL	-00
-BB (Burnished Bronze)	BB	BB	BB	-C (Coating)	-CL (Clear Lens)	CL	
-BK (Gloss Black)	BK	BK	BK		-FR (Frosted Lens)	FR	
-BLU (Blue)	BLU	BLU	BLU		-MP (Solite Lens)	MP	
-DVG (Dove Gray)	DVG	DVG	DVG		-LS (Linear Spread)	LS	
-FLG (Flannel Gray)	FLG	FLG	FLG		-HEX* (Hex Louver)		
-GA (Galvanized)	GA	GA	GA		-WW* (Wall Wash)		
-GWT (Gloss White)	GWT	GWT	GWT				
-LG (Lime Green)	LG	LG	LG				
-MB (Matte Black)	MB	MB	MB				
-MBL (Midnight Blue)	MBL	MBL	MBL				
-PNA (Painted Natural Aluminum)	PNA	PNA	PNA				
-PNC (Painted Natural Copper)	PNC	PNC	PNC				
-RD (Red)	RD	RD	RD				
-SGR (Sage Green)	SGR	SGR	SGR				
-SND (Sand)	SND	SND	SND				
-SS (Satin Silver)	SS	SS	SS				
-TBZ (Textured Bronze)	TBZ	TBZ	TBZ				
-TGP (Textured Graphite)	TGP	TGP	TGP				
-TNG (Tangerine)	TNG	TNG	TNG				
-TTL (Tahitian Teal)	TTL	TTL	TTL				
-WT (Semi Gloss White)	WT	WT	WT				
-YEL (Yellow)	YEL	YEL	YEL				

Cutout cover

SHIFT-HS-1-2-CON-XXX* (½" cutout cover)
SHIFT-HS-3-4-CON-XXX* (¾" cutout cover)
SHIFT-HS-SOL-CON-XXX* (Solid cutout cover)

* Same finish as housing body
Contact Sale for additional piece(s)

Media

S-Lens-CL-0 (Clear Lens)
S-Lens-FR-0 (Frosted Lens)
S-Lens-MP-0 (Solite Lens)
S-Lens-LS-0 (Linear Spread)
S-Lens-HEX-0* (Hex Louver)
S-Lens-WW-0* (Wall Wash)

*Note: Can only fit 1 media if
HEX or WW is selected

SPECIFICATIONS

WATTS	10W, 15W, 20W, 25W, 30W
EFFICACY	Up to 97 lpw
CRI	80+ CRI and 90+ CRI
CCT OPTIONS	2700K, 3000K, 3500K, 4000K or Warm Dimming
VOLTAGE	120V - 277V, or 120V
DIMMING	TRIAC, ELV, 0-10V, EcoSystem, DALI, DMX
OPTICS	10°, 30°, 50° / Accepts up to 2 lenses, ordered separately
ADJUSTABILITY	45° tilt infinite rotation with tool-free locking
HOUSING	Flush Mount, Suspended Stem, Suspended Cable
POWER SUPPLY	Constant Current driver with +.9 power factor and +85% efficiency
GENERAL LISTING	UL listed. Damp listed. Title 24 JA8
CONSTRUCTION	Die Cast, Extruded Aluminum
FINISH	22 Standard powder coat finishes and optional coastal coating
LED LIFETIME	L70; 50,000 hours @ 70% lumen maintenance
WARRANTY	5 years

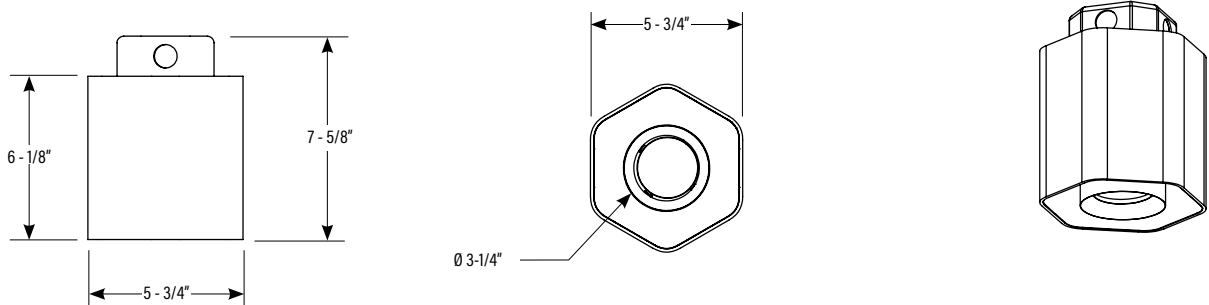
Revised 12/08/2022

Patent: www.csllighting.com/patents

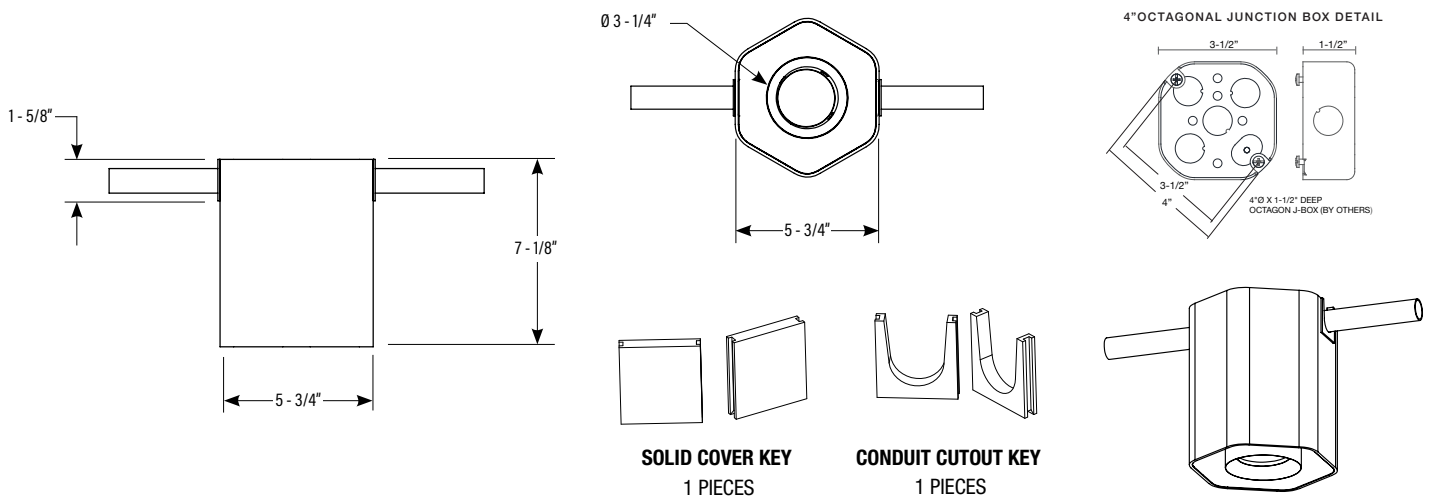
14508 Nelson Ave. City of Industry, CA 91744 • tel: 626.336.4511 • fax: 626.330.4266 • www.csllighting.com
©2021 Creative Systems Lighting, A Division of Troy-CSL Lighting, Inc. All rights reserved. Subject to change without notice.



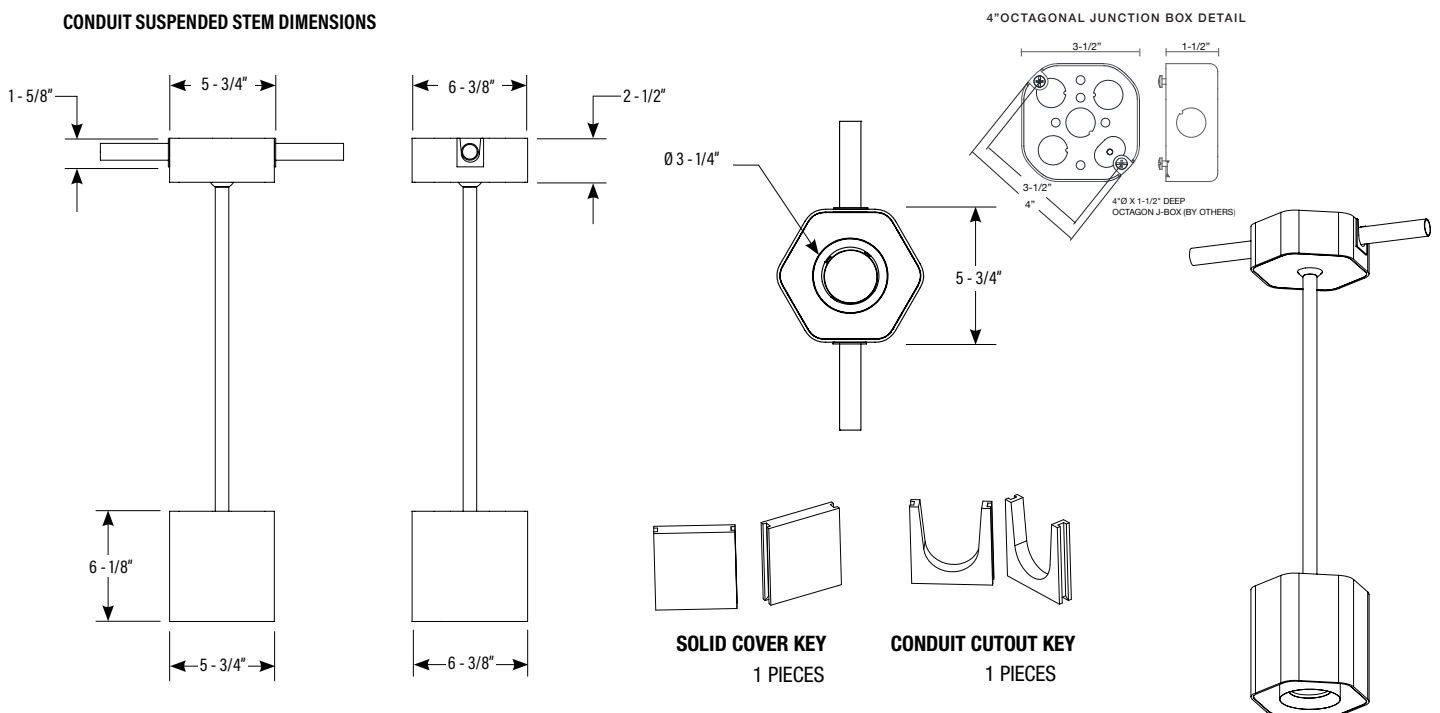
FLUSH MOUNT DIMENSIONS



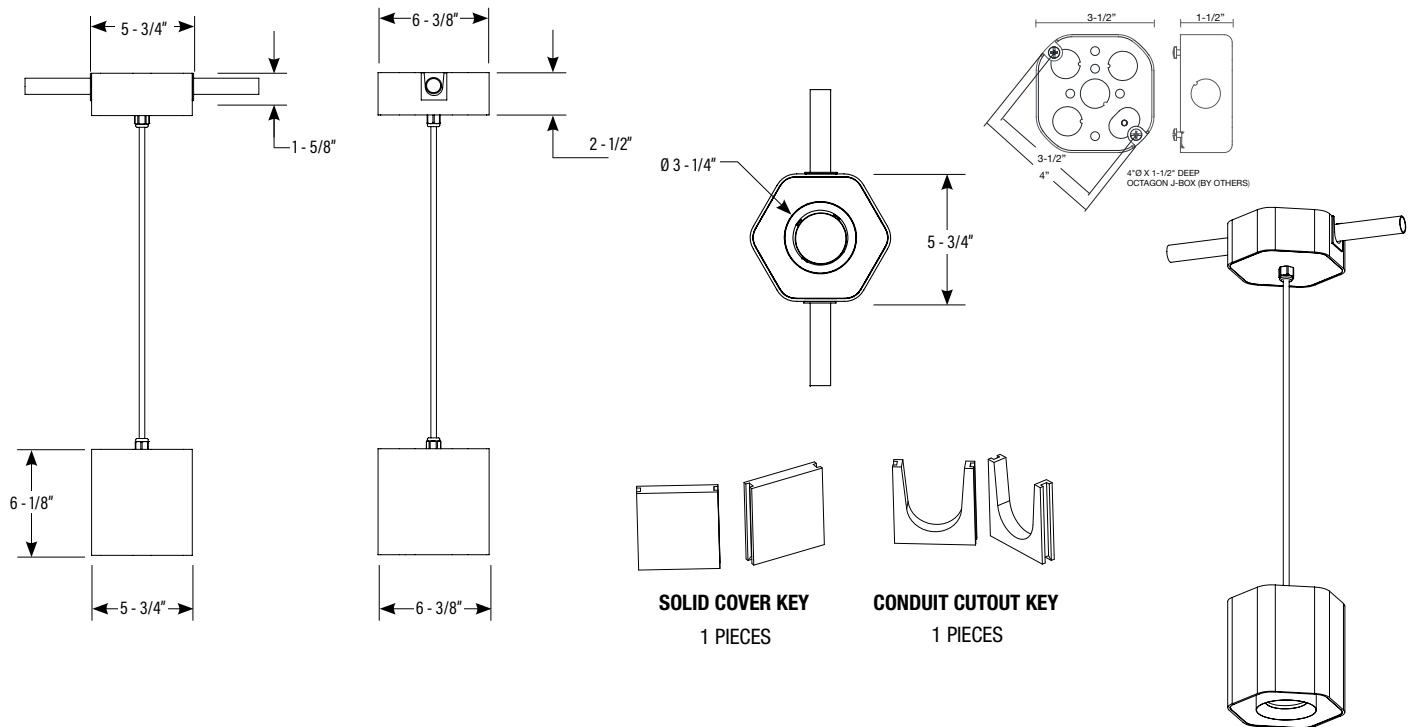
CONDUIT FLUSH MOUNT DIMENSIONS



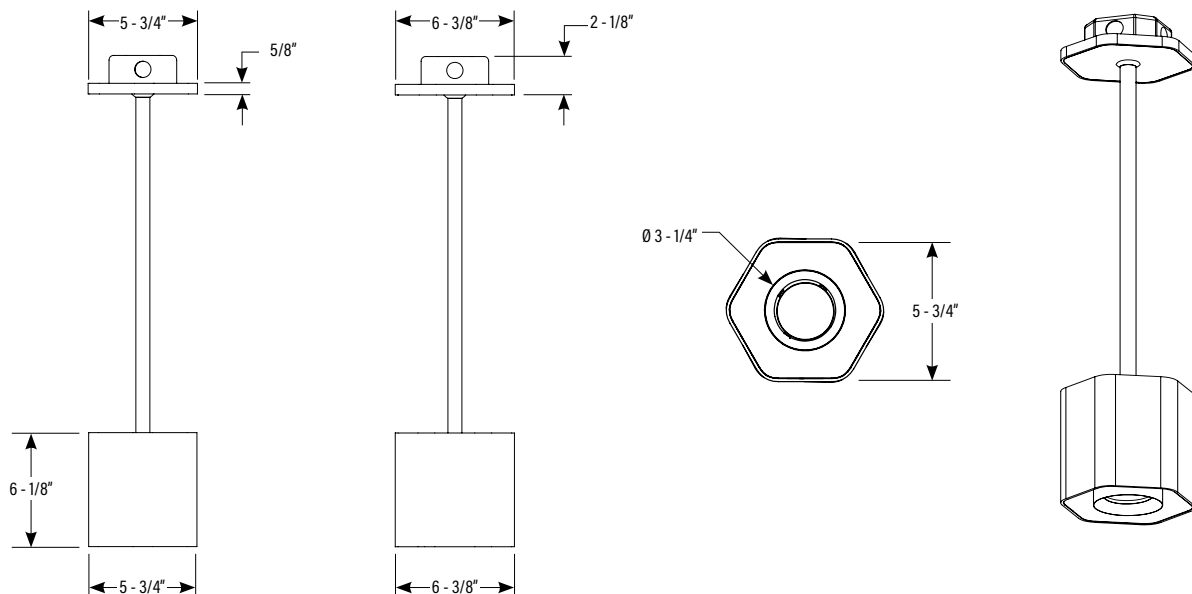
CONDUIT SUSPENDED STEM DIMENSIONS



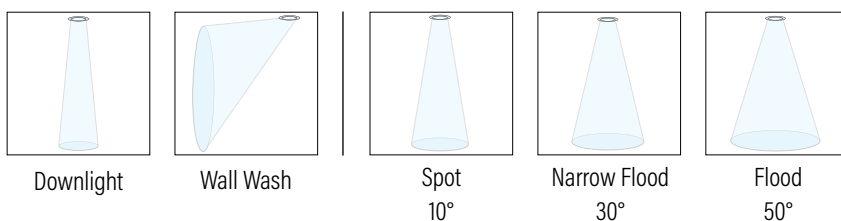
CONDUIT SUSPENDED CABLE DIMENSIONS



SUSPENDED STEM DIMENSIONS



BEAM SPREADS



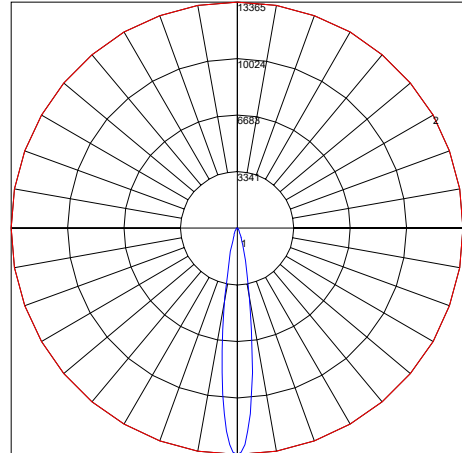
PHOTOMETRY

GyroShift 3.75" / 10° Optic

Model #: S3-1L-308010-XXXXXX-00
Report #: L051801104
Delivered Lumens: 1774
Input Watts: 27.39W
Efficacy: 65
Power Factor: 0.99
Total Harmonic Distortion: 11%
CCT: 3028
CRI: 92
Max Candela: 13,365
Spacing Criterion (0-180): 0.26
Spacing Criterion (90-270): 0.26
Spacing Criterion (diagonal): 0.28

R Values

R1	91.72
R2	94.72
R3	96.29
R4	92.07
R5	91.03
R6	93.01
R7	92.69
R8	81.88
R9	57.91
R10	86.62
R11	92.29
R12	78.53
R13	92.41
R14	97.21



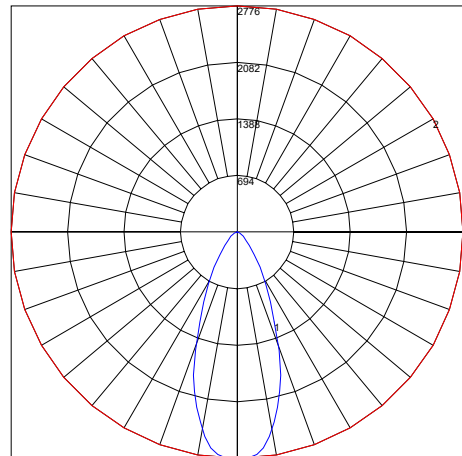
Maximum Candela = 13365 Located At Horizontal Angle = 0, Vertical Angle = 0
1 - Vertical Plane Through Horizontal Angles (0 - 180) (Through Max. Cd.)
2 - Horizontal Cone Through Vertical Angle (0) (Through Max. Cd.)

GyroShift 3.75" / 30° Optic

Model #: S3-1L-308030-XXXXXX-00
Report #: L051801105
Delivered Lumens: 1832
Input Watts: 27.39W
Efficacy: 67
Power Factor: 0.99
Total Harmonic Distortion: 11%
CCT: 3028
CRI: 92
Max Candela: 2776
Spacing Criterion (0-180): 0.70
Spacing Criterion (90-270): 0.70
Spacing Criterion (diagonal): 0.68

R Values

R1	91.89
R2	94.84
R3	96.33
R4	92.18
R5	91.22
R6	93.16
R7	92.67
R8	82.06
R9	58.41
R10	86.90
R11	92.43
R12	78.86
R13	92.58
R14	97.23



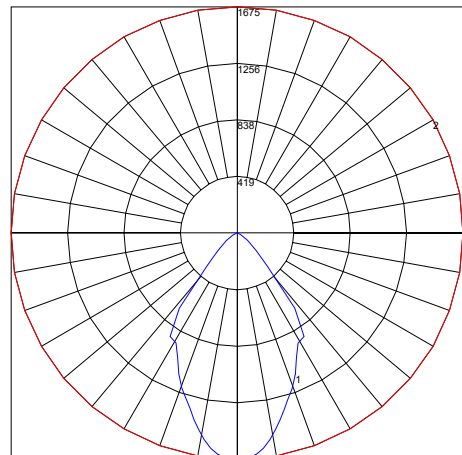
Maximum Candela = 2776 Located At Horizontal Angle = 0, Vertical Angle = 3
1 - Vertical Plane Through Horizontal Angles (0 - 180) (Through Max. Cd.)
2 - Horizontal Cone Through Vertical Angle (3) (Through Max. Cd.)

GyroShift 3.75" / 50° Optic

Model #: S3-1L-308050-XXXXXX-00
Report #: L051801104
Delivered Lumens: 1867
Input Watts: 27.39W
Efficacy: 68
Power Factor: 0.99
Total Harmonic Distortion: 11%
CCT: 3031
CRI: 92
Max Candela: 1675
Spacing Criterion (0-180): 0.88
Spacing Criterion (90-270): 0.88
Spacing Criterion (diagonal): 1.02

R Values

R1	91.74
R2	94.69
R3	96.21
R4	92.10
R5	91.05
R6	92.96
R7	92.71
R8	81.97
R9	58.08
R10	86.57
R11	92.32
R12	78.55
R13	92.42
R14	97.16



Maximum Candela = 1675 Located At Horizontal Angle = 0, Vertical Angle = 0
1 - Vertical Plane Through Horizontal Angles (0 - 180) (Through Max. Cd.)
2 - Horizontal Cone Through Vertical Angle (0) (Through Max. Cd.)