



SPEC-00284 GYROSHIFT-MULTIPLES, 3", V-1.3, UPDATED 10/14/2022

GYROSHIFT MULTIPLES 3" ADJUSTABLE DOWNLIGHT

S3, S3F

PROJECT: _____

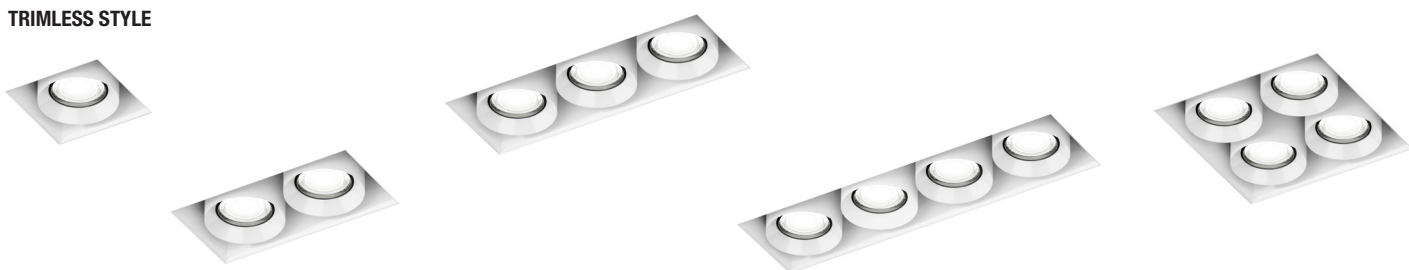
TYPE: _____

NOTE: _____

TRIM STYLE



TRIMLESS STYLE



LED LIGHT ENGINE

| | |
|------------------|--------------------------------------|
| RATED WATTAGE | 10W, 15W, 20W |
| DELIVERED LUMENS | Up to 1739 lm Per Head |
| EFFICACY | Up to 97 lpw Per Head |
| CCT @ 90CRI | 2700K, 3000K, 3500K, 4000K, Warm Dim |
| COLOR QUALITY | 90+ CRI, 2-Step SDCM |
| LED LIFETIME | 55,000 hours @ L70 |

DELIVERED LUMENS MATRIX - LUMENS PER LIGHT

| | | 10° Optic | 30° Optic | 50° Optic |
|-----|---------------|-----------|-----------|-----------|
| 10W | 2700K (90CRI) | 861 lm | 949 lm | 859 lm |
| | 3000K (90CRI) | 914 lm | 1007 lm | 912 lm |
| | 3500K (90CRI) | 958 lm | 1055 lm | 956 lm |
| | 4000K (90CRI) | 994 lm | 1094 lm | 992 lm |
| | Warm Dim | 556 lm | 685 lm | 619 lm |
| 15W | 2700K (90CRI) | 1275 lm | 1404 lm | 1272 lm |
| | 3000K (90CRI) | 1353 lm | 1490 lm | 1350 lm |
| | 3500K (90CRI) | 1418 lm | 1562 lm | 1415 lm |
| | 4000K (90CRI) | 1471 lm | 1620 lm | 1467 lm |
| | Warm Dim | 854 lm | 1051 lm | 950 lm |
| 20W | 2700K (90CRI) | 1534 lm | 1689 lm | 1530 lm |
| | 3000K (90CRI) | 1628 lm | 1793 lm | 1624 lm |
| | 3500K (90CRI) | 1706 lm | 1879 lm | 1702 lm |
| | 4000K (90CRI) | 1770 lm | 1949 lm | 1766 lm |

SILENT VU™ OPTICS TECHNOLOGY

| | |
|------------|--|
| OPTICS | 10°, 30°, 50° Installed |
| ADJUSTABLE | 45° tilt, Infinite Rotation, Tool Free Locking Below Ceiling |
| MEDIA | Clear, Solite, Frosted, Linear Spread, Hex Louver, Wall Wash |

POWER SUPPLY

| | |
|---------------|-------------------------------------|
| INPUT VOLTAGE | 120-277V, or 120V |
| DIMMING | TRIAC, ELV, 0-10V, EcoSystem®, DALI |

TRIM OPTIONS

- Trim
- Trimless

HOUSING INSTALLATION

- New Construction IC box, Chicago Plenum
- 5/8" – 1 1/4" ceiling thickness
- Minimum Plenum Height: XX"
- Ceiling Material: Drywall, T-bar grid
- Hanger bars and butterfly brackets included
- Steel housing and junction box, 1/2" knockouts

LISTINGS AND WARRANTY

- cULus Listed to US and Canadian standards for Damp Locations
- Five (5) years limited warranty
- CA Title 24 JA-8 Compliant



DAMP
LOCATION



JA8 TITLE
24
COMPLIANT

5 YEAR
LIMITED WARRANTY



SPEC-00284 GYROSHIFT-MULTIPLES, 3", V-1.3, UPDATED 10/14/2022

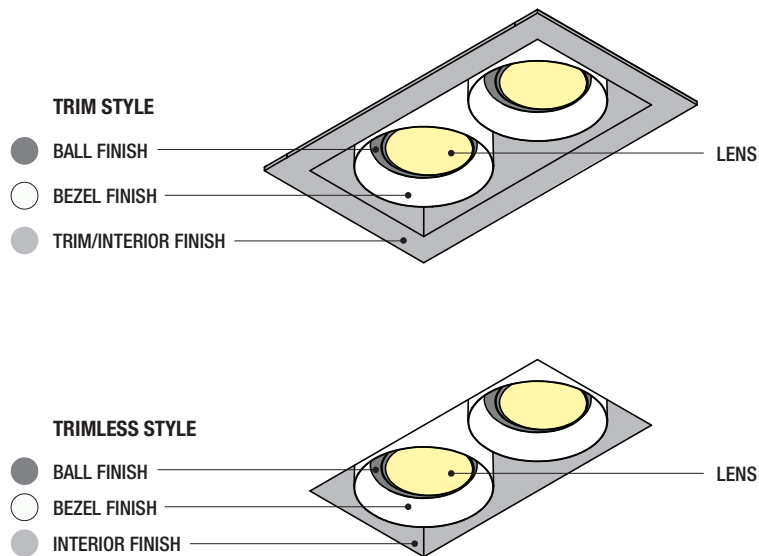
GYROSHIFT MULTIPLES 3" ADJUSTABLE DOWNLIGHT

S3, S3F

PROJECT: _____

TYPE: _____

NOTE: _____



FINISH

- ABL** (Aegean Blue)
- BB** (Burnished Bronze)
- BK** (Gloss Black)
- BLU** (Blue)
- DVG** (Dove Gray)
- FLG** (Flannel Gray)
- GA** (Galvanized)
- GWT** (Gloss White)
- LG** (Lime Green)
- MB** (Matte Black)
- MBL** (Midnight Blue)
- PNA** (Painted Natural Aluminum)
- PNC** (Painted Natural Copper)
- RD** (Red)
- SGR** (Sage Green)
- SND** (Sand)
- SS** (Satin Silver)
- TBZ** (Textured Bronze)
- TGP** (Textured Graphite)
- TNG** (Tangerine)
- TTL** (Tahitian Teal)
- WT** (Semi Gloss White)
- YEL** (Yellow)

ORDER MATRIX

TRIM ORDER MATRIX (EXAMPLE: S3-1LTL-BKBK BK-279010-CLFR-00)

| TRIM STYLE | BALL FINISH | BEZEL FINISH | TRIM/INTERIOR | CCT | CRI | OPTIC | MEDIA 1 | MEDIA 2 | REV |
|--|--|--------------|---------------|---|-----------------|--|--|---|------------|
| S3-1L 1 Light | -ABL (Aegean Blue) | ABL | ABL | -27 (2700K) | 90 (CRI) | -10 (10°) -30 (30°) -50 (50°) | -NL (No Lens) | -NL (No Lens) | -00 |
| S3-1LTL 1 Light Trimless | -BB (Burnished Bronze) | BB | BB | -30 (3000K) | | | -CL (Clear Lens) | -CL (Clear Lens) | |
| | -BK (Gloss Black) | BK | BK | -35 (3500K) | | | -FR (Frosted) | -FR (Frosted) | |
| | -BLU (Blue) | BLU | BLU | -40 (4000K) | | | -MP (Solite) | -MP (Solite) | |
| | -DVG (Dove Gray) | DVG | DVG | -WD* (Warm Dim) | | | -LS (Linear Spread) | -LS (Linear Spread) | |
| S3-2L 2 Light | -FLG (Flannel Gray) | FLG | FLG | *WD available with 10W or 15W options only. | | | -HEX (Hex Cell) -WW (Wall Wash) | Holds 1 Media only when HEX or WW selected. | |
| S3-2LTL 2 Light Trimless | -GA (Galvanized) | GA | GA | | | | | | |
| | -GWT (Gloss White) | GWT | GWT | | | | | | |
| | -LG (Lime Green) | LG | LG | | | | | | |
| | -MB (Matte Black) | MB | MB | | | | | | |
| S3-3L 3 Light | -MBL (Midnight Blue) | MBL | MBL | | | | | | |
| S3-3LTL 3 Light Trimless | -PNA (Painted Natural Aluminum) | PNA | PNA | | | | | | |
| | -PNC (Painted Natural Copper) | PNC | PNC | | | | | | |
| | -RD (Red) | RD | RD | | | | | | |
| S3-4L 4 Light Linear | -SGR (Sage Green) | SGR | SGR | | | | | | |
| S3-4LTL 4 Light Linear Trimless | -SND (Sand) | SND | SND | | | | | | |
| | -SS (Satin Silver) | SS | SS | | | | | | |
| | -TBZ (Textured Bronze) | TBZ | TBZ | | | | | | |
| S3-4SQL 4 Light Square | -TGP (Textured Graphite) | TGP | TGP | | | | | | |
| S3-4SQLTL 4 Light Square Trimless | -TNG (Tangerine) | TNG | TNG | | | | | | |
| | -TTL (Tahitian Teal) | TTL | TTL | | | | | | |
| | -WT (Semi Gloss White) | WT | WT | | | | | | |
| | -YEL (Yellow) | YEL | YEL | | | | | | |

MEDIA

| | |
|-----------------------|-----------------|
| S3-Lens-CL-0 | (Clear Lens) |
| S3-Lens-FR-0 | (Frosted Lens) |
| S3-Lens-MP-0 | (Solite Lens) |
| S3-Lens-LS-0 | (Linear Spread) |
| S3-Lens-HEX-0* | (Hex Louver) |
| S3-Lens-WW-0* | (Wall Wash) |

BEAM SPREADS

| | | |
|-----------|------------|-----------|
| | | |
| Downlight | Adjustable | Wall Wash |

OPTICS

| | |
|----------------------|--------------------|
| S3-10-OPTIC-0 | (10° Spot) |
| S3-30-OPTIC-0 | (30° Narrow Flood) |
| S3-50-OPTIC-0 | (50° Flood) |

| | | |
|----------|------------------|-----------|
| | | |
| 10° Spot | 30° Narrow Flood | 50° Flood |



SPEC-00284 GYROSHIFT-MULTIPLES, 3", V-1.3, UPDATED 10/14/2022

GYROSHIFT MULTIPLES 3" ADJUSTABLE DOWNLIGHT

S3, S3F

PROJECT: _____

TYPE: _____

NOTE: _____

ORDER MATRIX

HOUSING ORDER MATRIX (IC OR CHICAGO RATED NEW CONSTRUCTION BOX) (EXAMPLE: S3F-1LRC-15S-00)

| HOUSING SIZE | HANGING TYPE | WATTS PER LIGHT | DRIVER | REV |
|--|------------------------------------|--------------------------------------|--|------------|
| S3F-1L 1 Light Housing | RI (Recessed IC) | -10 (10W) | S (ERP, Universal Dim, Triac/ELV/0-10V 1% 120-277V) <i>Forward and reverse phase dimming at 120V only.</i> | -00 |
| S3F-1LTL 1 Light Trimless Housing | RC (Recessed Chicago Rated) | -15 (15W) | L3 (Lutron Hi-Lume® Fade-to-Black 1% 120-277V) | |
| S3F-2L 2 Light Housing | | -20* (20W) | EL1 (EldoLED DALI 1% 120-277V) | |
| S3F-2LTL 2 Light Trimless Housing | | * 20W not available with Warm Dim | EL2 (EldoLED 0-10V 1% 120-277V) | |
| S3F-3L 3 Light Housing | | | | |
| S3F-3LTL 3 Light Trimless Housing | | | | |
| S3F-4L 4 Light Linear Housing | | | | |
| S3F-4LTL 4 Light Linear Trimless Housing | | | | |
| S3F-4SQL 4 Light Square Housing | | | | |
| S3F-4SQLTL 4 Light Square Trimless Housing | | | | |





GYROSHIFT MULTIPLES 3" ADJUSTABLE DOWNLIGHT

S3, S3F

PROJECT: _____

TYPE: _____

NOTE: _____

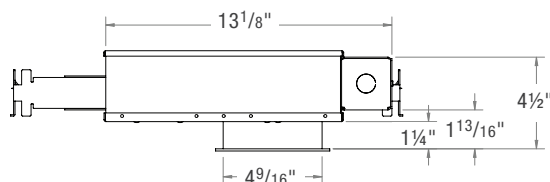
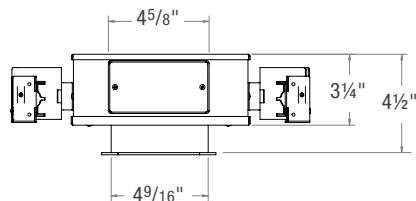
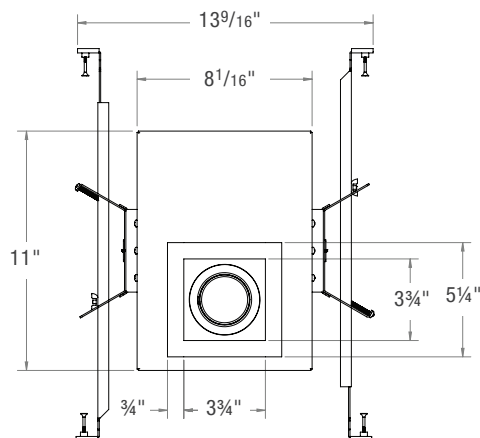
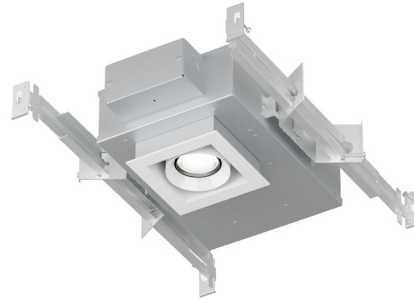
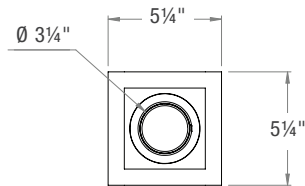
SPEC-00284 GYROSHIFT-MULTIPLES, 3", V-1.3, UPDATED 10/14/2022

LINE DRAWINGS

S3F-1L

3" - 1 Light

Recessed Downlight





GYROSHIFT MULTIPLES 3" ADJUSTABLE DOWNLIGHT

S3, S3F

PROJECT: _____

TYPE: _____

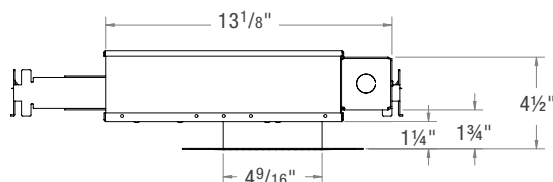
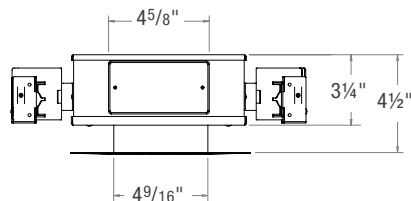
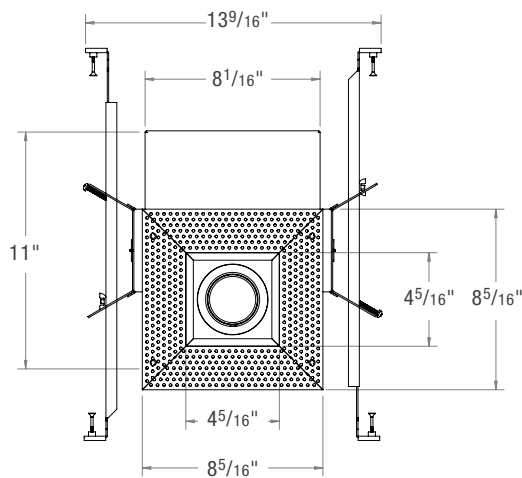
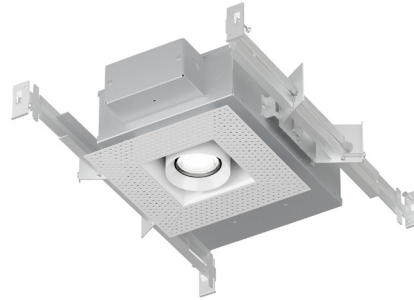
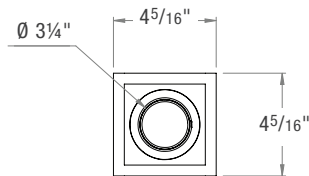
NOTE: _____

SPEC-00284 GYROSHIFT-MULTIPLES, 3", V-1.3, UPDATED 10/14/2022

LINE DRAWINGS

S3F-1LTL

3" - 1 Light Trimless
Recessed Downlight





GYROSHIFT MULTIPLES 3" ADJUSTABLE DOWNLIGHT

PROJECT: _____

TYPE: _____

NOTE: _____

SPEC-00284 GYROSHIFT-MULTIPLES, 3", V-1.3, UPDATED 10/14/2022

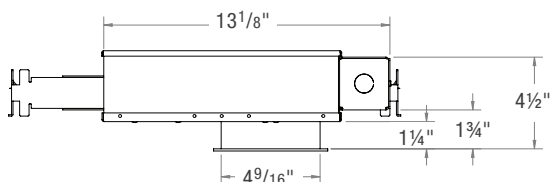
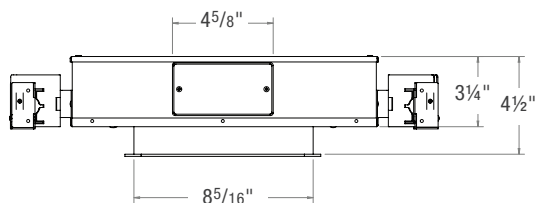
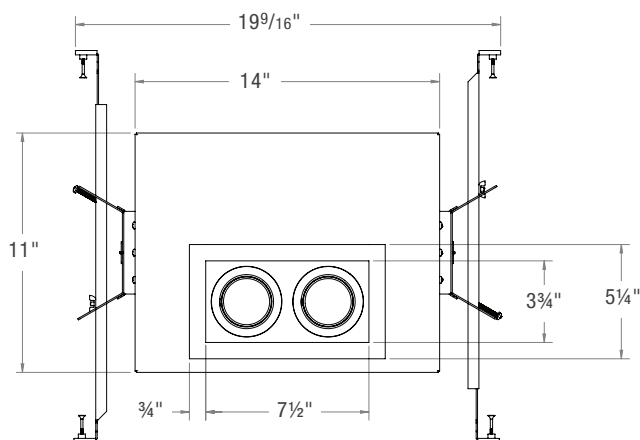
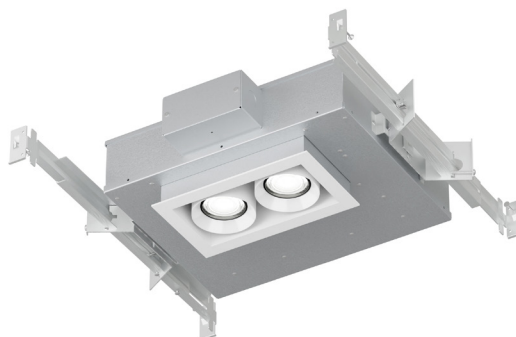
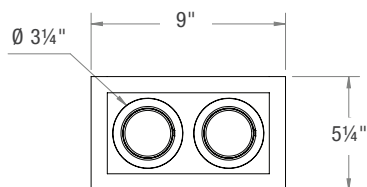
S3, S3F

LINE DRAWINGS

S3F-2L

3" - 2 Light

Recessed Downlight





GYROSHIFT MULTIPLES 3" ADJUSTABLE DOWNLIGHT

PROJECT: _____

TYPE: _____

NOTE: _____

SPEC-00284 GYROSHIFT-MULTIPLES, 3", V-1.3, UPDATED 10/14/2022

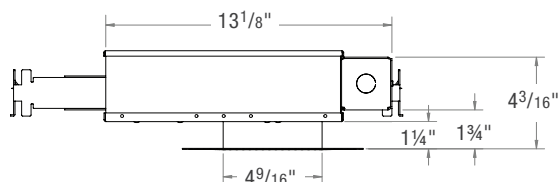
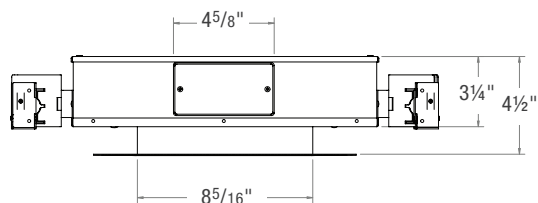
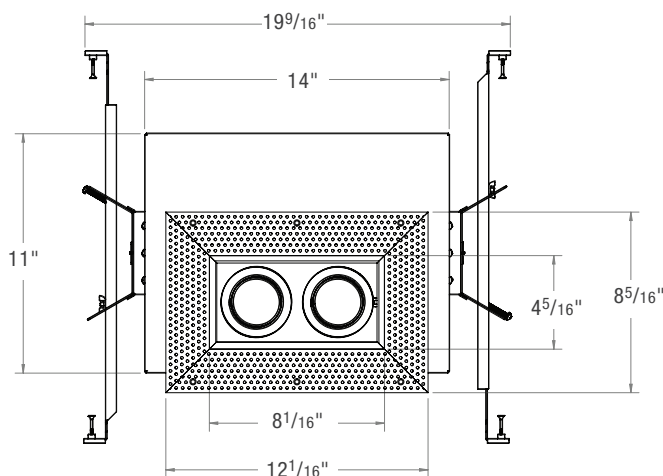
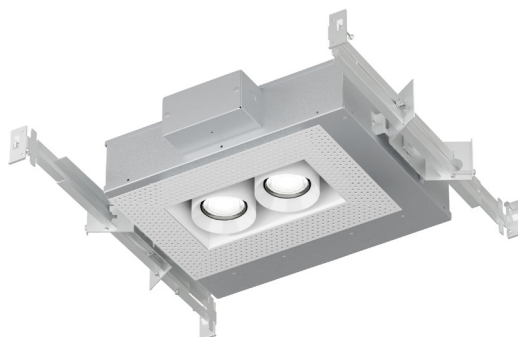
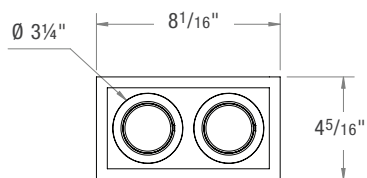
S3, S3F

LINE DRAWINGS

S3F-2LTL

3" - 2 Light Trimless

Recessed Downlight





GYROSHIFT MULTIPLES 3" ADJUSTABLE DOWNLIGHT

S3, S3F

PROJECT: _____

TYPE: _____

NOTE: _____

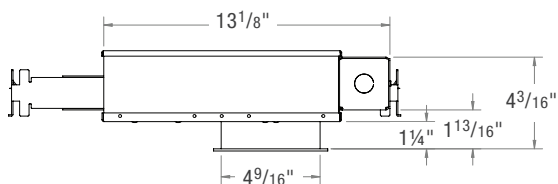
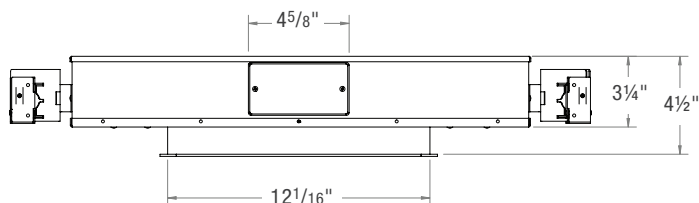
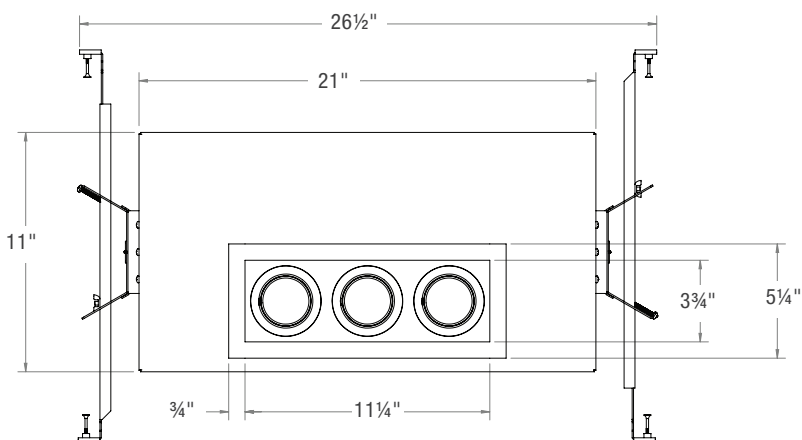
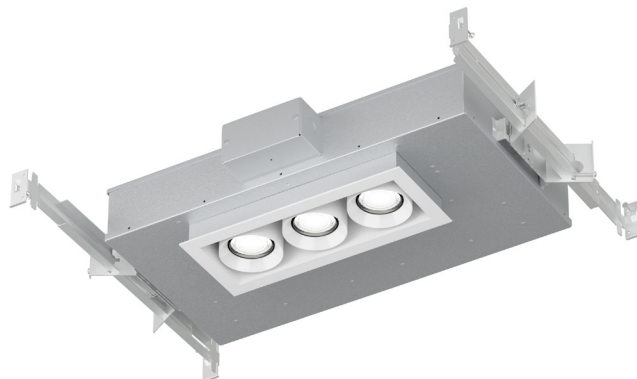
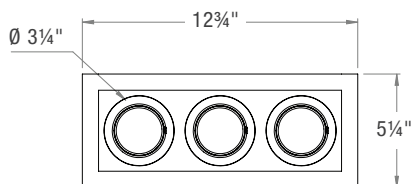
SPEC-00284 GYROSHIFT-MULTIPLES, 3", V-1.3, UPDATED 10/14/2022

LINE DRAWINGS

S3F-3L

3" - 3 Light

Recessed Downlight





GYROSHIFT MULTIPLES 3" ADJUSTABLE DOWNLIGHT

S3, S3F

PROJECT: _____

TYPE: _____

NOTE: _____

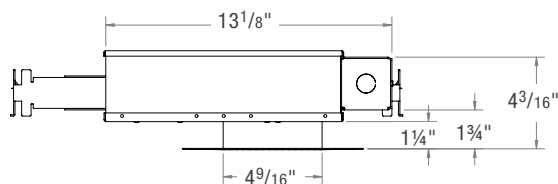
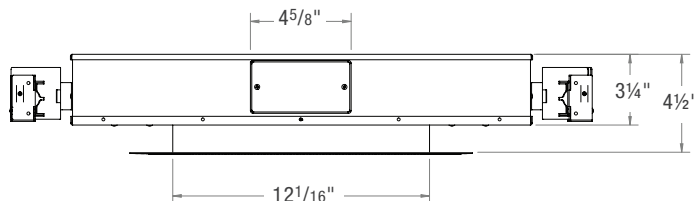
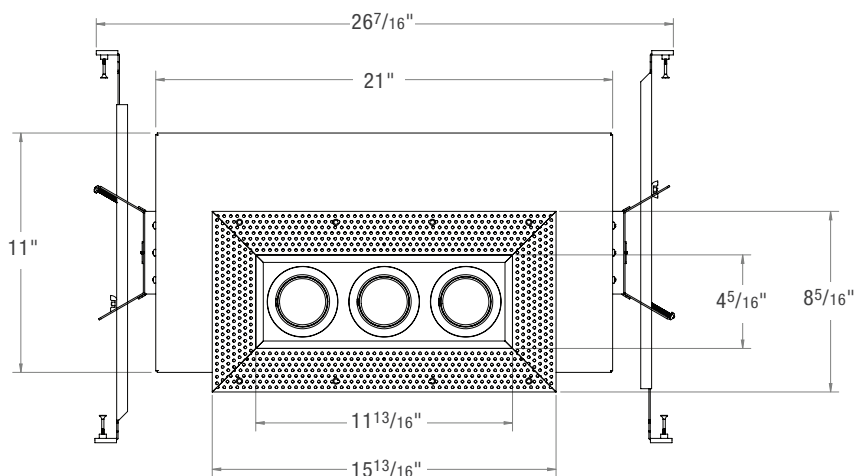
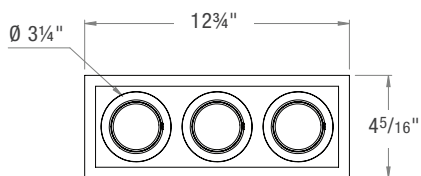
SPEC-00284 GYROSHIFT-MULTIPLES, 3", V-1.3, UPDATED 10/14/2022

LINE DRAWINGS

S3F-3TL

3" - 3 Light Trimless

Recessed Downlight





GYROSHIFT MULTIPLES 3" ADJUSTABLE DOWNLIGHT

S3, S3F

PROJECT: _____

TYPE: _____

NOTE: _____

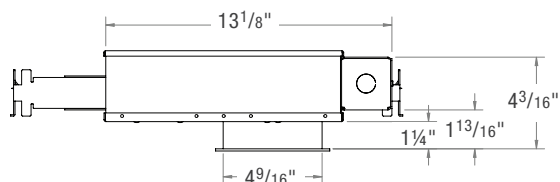
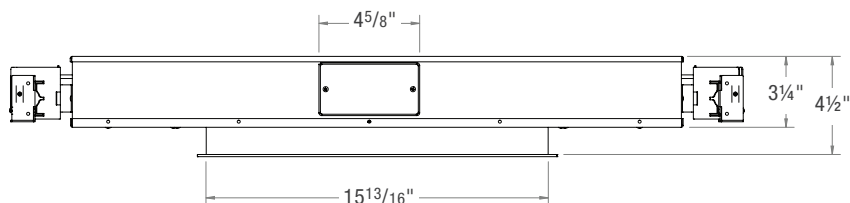
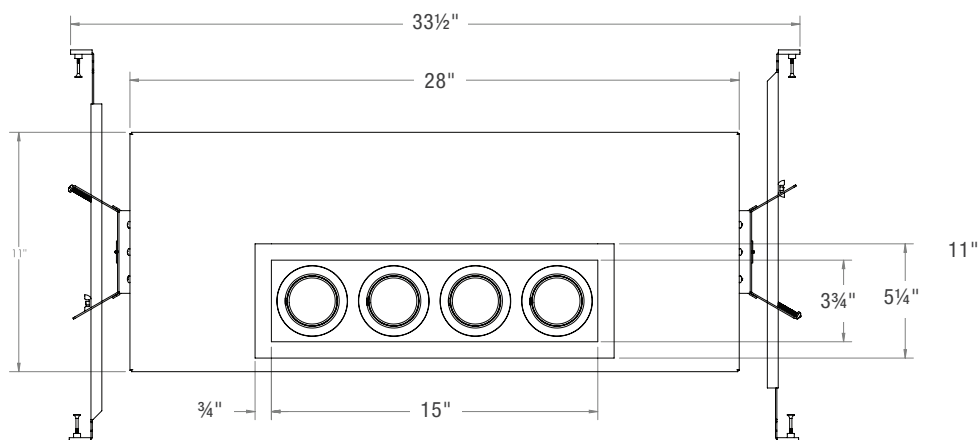
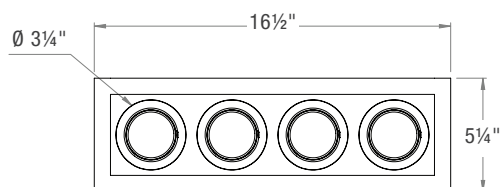
SPEC-00284 GYROSHIFT-MULTIPLES, 3", V-1.3, UPDATED 10/14/2022

LINE DRAWINGS

S3F-4L

3" - 4 Light

Recessed Downlight





SPEC-00284 GYROSHIFT-MULTIPLES, 3", V-1.3, UPDATED 10/14/2022

GYROSHIFT MULTIPLES 3" ADJUSTABLE DOWNLIGHT

S3, S3F

PROJECT: _____

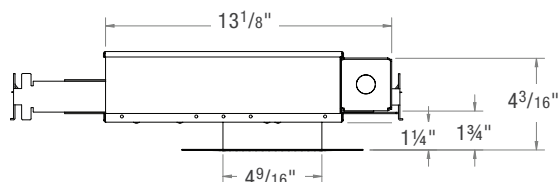
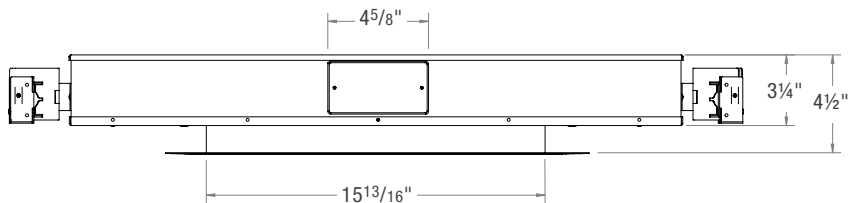
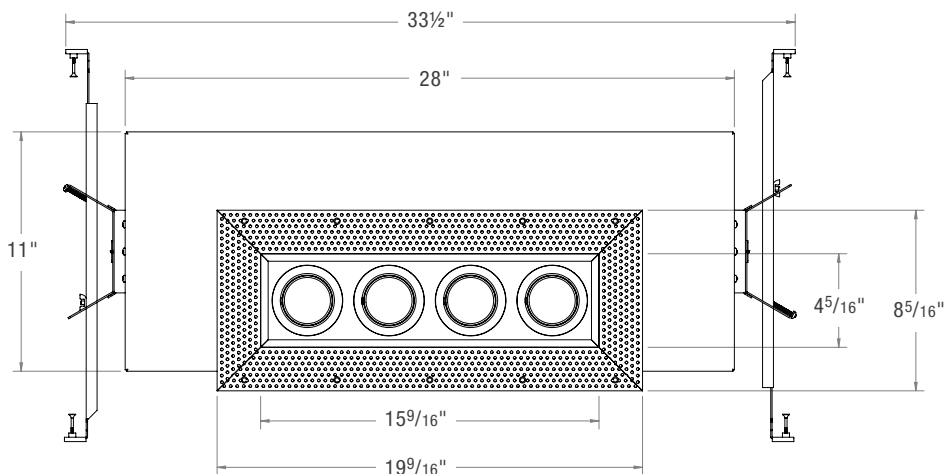
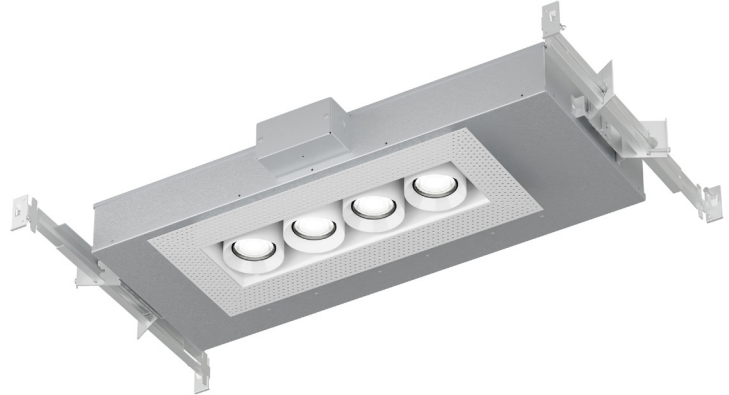
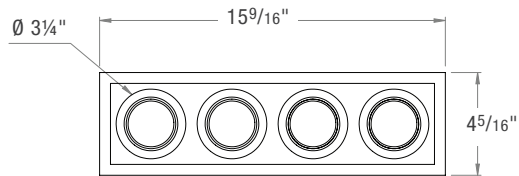
TYPE: _____

NOTE: _____

LINE DRAWINGS

S3F-4LTL

3" - 4 Light Trimless
Recessed Downlight





GYROSHIFT MULTIPLES 3" ADJUSTABLE DOWNLIGHT

S3, S3F

PROJECT: _____

TYPE: _____

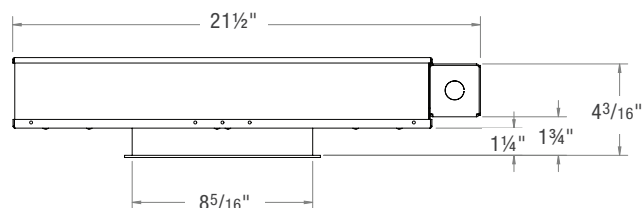
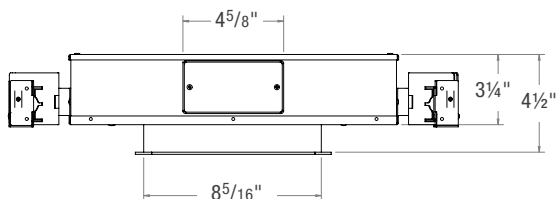
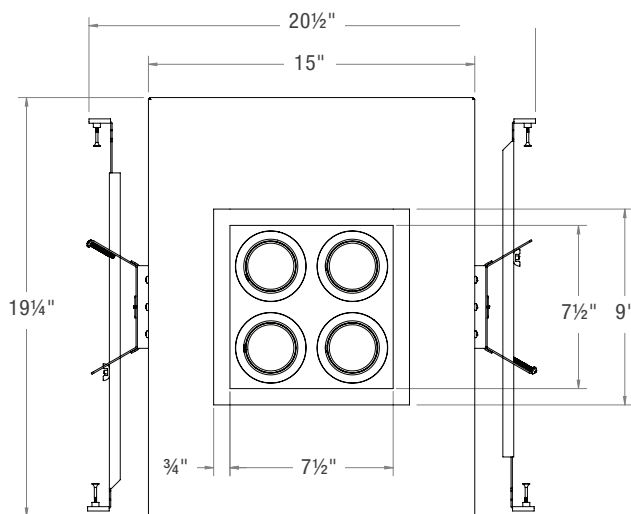
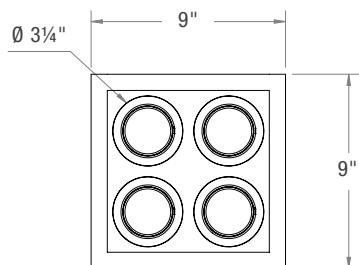
NOTE: _____

SPEC-00284 GYROSHIFT-MULTIPLES, 3", V-1.3, UPDATED 10/14/2022

LINE DRAWINGS

S3F-4SQL

3" - 4 Light Square
Recessed Downlight





SPEC-00284 GYROSHIFT-MULTIPLES, 3", V-1.3, UPDATED 10/14/2022

GYROSHIFT MULTIPLES 3" ADJUSTABLE DOWNLIGHT

S3, S3F

PROJECT: _____

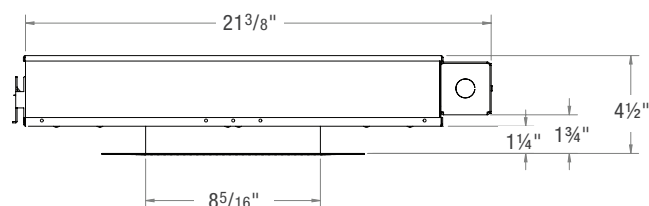
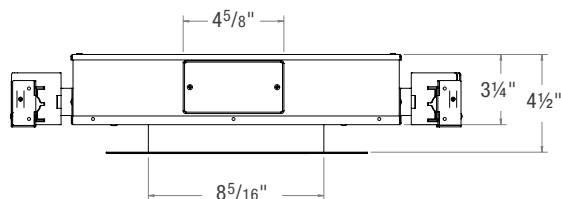
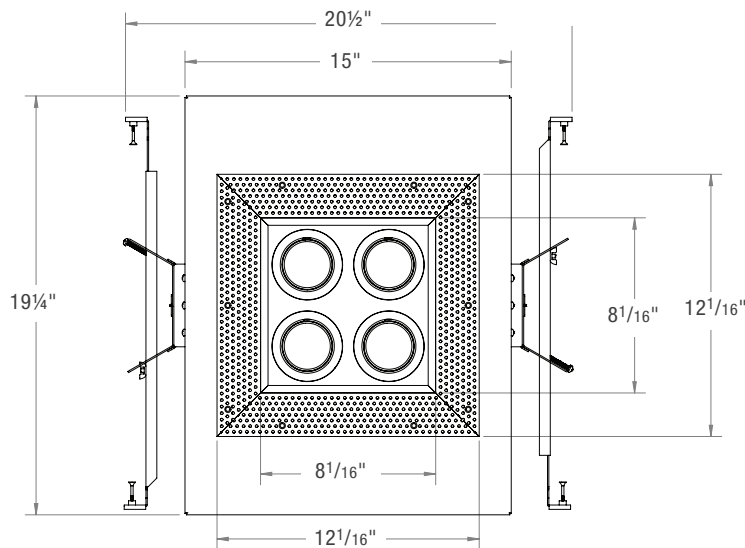
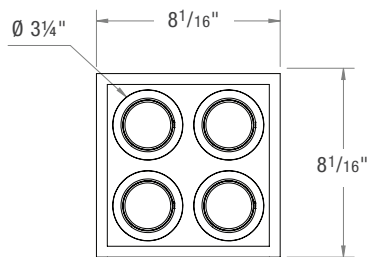
TYPE: _____

NOTE: _____

LINE DRAWINGS

S3F-4SQLTL

3" - 4 Light Square Trimless
Recessed Downlight





GYROSHIFT MULTIPLES 3" ADJUSTABLE DOWNLIGHT

S3, S3F

PROJECT: _____

TYPE: _____

NOTE: _____

SPEC-00284 GYROSHIFT-MULTIPLES, 3", V-1.3, UPDATED 10/14/2022

STANDARD FINISHES



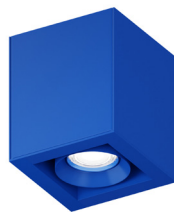
ABL
Aegean Blue



BB
Burnished Bronze



BK
Gloss Black



BLU
Blue



DVG
Dove Gray



FLG
Flannel Gray



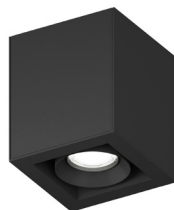
GA
Galvanized



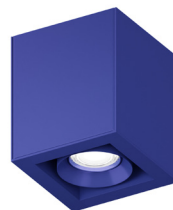
GWT
Gloss White



LG
Lime Green



MB
Matte Black



MBL
Midnight Blue



PNA
Painted Natural Aluminum



PNC
Painted Natural Copper



RD
Red



SGR
Sage Green



SND
Sand



SS
Satin Silver



TBZ
Textured Bronze



TGP
Textured Graphite



TNG
Tangerine



TTL
Tahitian Teal



WT
Semi Gloss White



YEL
Yellow



SPEC-00284 GYROSHIFT-MULTIPLES, 3", V-1.3, UPDATED 10/14/2022

GYROSHIFT MULTIPLES 3" ADJUSTABLE DOWNLIGHT

S3, S3F

PROJECT: _____

TYPE: _____

NOTE: _____

DIMMING DRIVER COMPATIBILITY

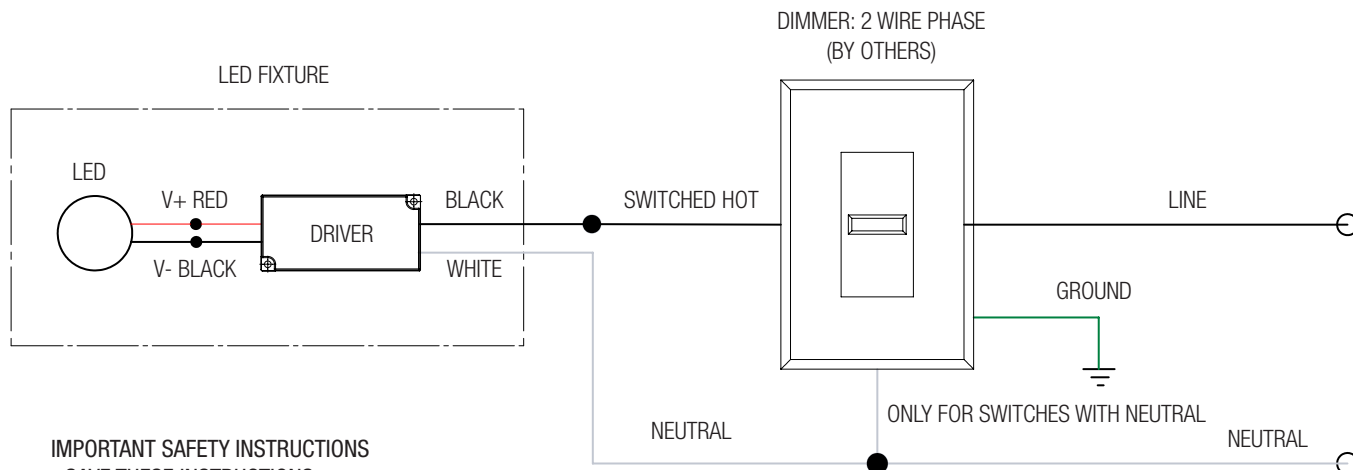
DIMMER LIST

| "S" ERP PHASE-CUT DIMMERS | | | |
|---------------------------|-----------|--------------|-----------|
| Dimmer Information | | | |
| Manufacturer | Product | Manufacturer | Product |
| Cooper | DAL06P | Lightolier | ZP260QEW |
| | DLC03P | Lutron | CT103P |
| | SLC03P | | DV600P |
| Leviton | 6161 | | DVCL-153P |
| | 6631-2 | | DVELV303P |
| | 6633-P | | FAELV500 |
| | 6673-10W | | LG600P |
| | 6683-1W | | MAELV600 |
| | IPE04 | | S600P |
| | IPI06-1LZ | | S-603PG |
| | VPE06 | | SELV300P |
| | | | TG-600P |
| | | | TGCL-153P |

NOTES:

Wiring diagrams are examples of typical installations intended to illustrate the number of wires that must be run to fixture. These diagrams are not intended to specify all equipment necessary for a given dimming circuit. Refer to specific dimmer manufacturer's documentation for details.

S- ERP DRIVER 2 WIRE PHASE DIMMING



IMPORTANT SAFETY INSTRUCTIONS - SAVE THESE INSTRUCTIONS

1. Keep these instructions in a safe place for future reference.
2. Only qualified electricians in accordance to local codes should install these fixtures.
3. De-energize the electrical circuit at the circuit breaker prior to installation process or servicing.
4. Make sure all connections are in accordance with the National Electrical Code and any local regulations.
5. Cap any wires not used separately (not together).



SPEC-00284 GYROSHIFT-MULTIPLES, 3", V-1.3, UPDATED 10/14/2022

GYROSHIFT MULTIPLES 3" ADJUSTABLE DOWNLIGHT

S3, S3F

PROJECT: _____

TYPE: _____

NOTE: _____

DIMMING DRIVER COMPATIBILITY

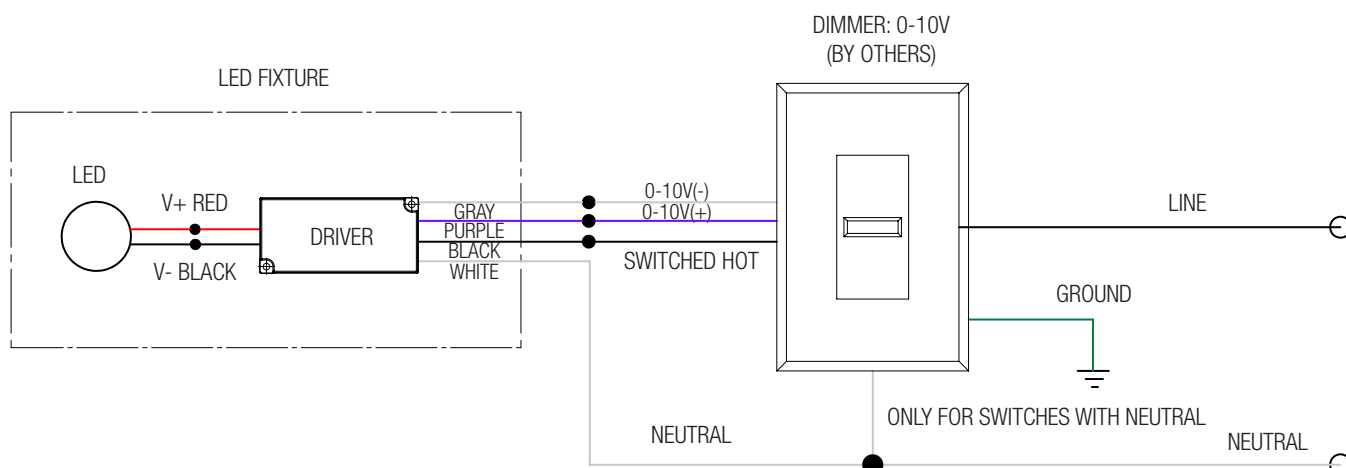
DIMMER LIST

| "S" ERP 0-10V | |
|--------------------|----------------|
| Dimmer Information | |
| Manufacturer | Product |
| Leviton | IP740-DLZ |
| Lichtolier | ZP600FAM120 |
| | V2000FAMU |
| Lutron | DVTV |
| | NTFTV |
| Crestron | CLS-EXP-DIMFLV |
| | DIN-4DIMFLV4 |
| | DIN-A08 |
| | GLX-DIMFLV8 |

NOTES:

Wiring diagrams are examples of typical installations intended to illustrate the number of wires that must be run to fixture. These diagrams are not intended to specify all equipment necessary for a given dimming circuit. Refer to specific dimmer manufacturer's documentation for details.

S- ERP DRIVER 0-10V DIMMING



IMPORTANT SAFETY INSTRUCTIONS

- SAVE THESE INSTRUCTIONS

1. Keep these instructions in a safe place for future reference.
2. Only qualified electricians in accordance to local codes should install these fixtures.
3. De-energize the electrical circuit at the circuit breaker prior to installation process or servicing.
4. Make sure all connections are in accordance with the National Electrical Code and any local regulations.
5. Cap any wires not used separately (not together).

DIMMING DRIVER COMPATIBILITY

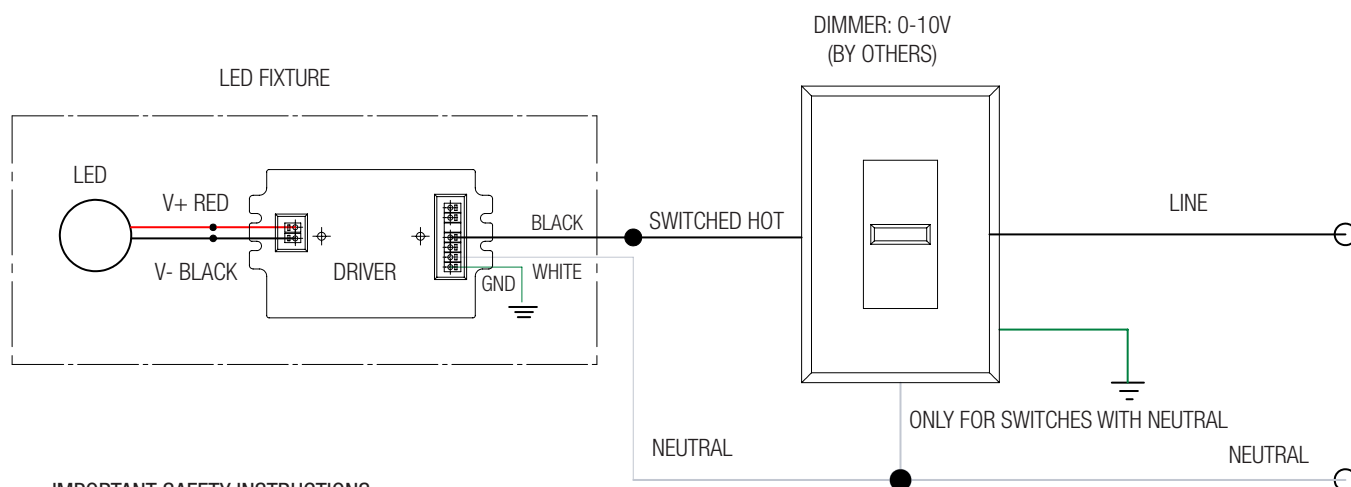
DIMMER LIST

| "L1" Lutron Hi-lume 2-Wire | |
|----------------------------|-----------|
| Dimmer Information | |
| Manufacturer | Product |
| Leviton | IPE04 |
| | IPI06-1LZ |
| | 6633-P |
| Lutron | DVELV300P |
| | DVCL-153P |
| | S600P |
| Cooper | DAL06P |
| | DLC03P |
| | SLC03P |

NOTES:

Wiring diagrams are examples of typical installations intended to illustrate the number of wires that must be run to fixture. These diagrams are not intended to specify all equipment necessary for a given dimming circuit. Refer to specific dimmer manufacturer's documentation for details.

L1- LUTRON DRIVER 2-WIRE DIMMING



IMPORTANT SAFETY INSTRUCTIONS

- SAVE THESE INSTRUCTIONS

1. Keep these instructions in a safe place for future reference.
2. Only qualified electricians in accordance to local codes should install these fixtures.
3. De-energize the electrical circuit at the circuit breaker prior to installation process or servicing.
4. Make sure all connections are in accordance with the National Electrical Code and any local regulations.
5. Cap any wires not used separately (not together).



SPEC-00284 GYROSHIFT-MULTIPLES, 3", V-1.3, UPDATED 10/14/2022

GYROSHIFT MULTIPLES 3" ADJUSTABLE DOWNLIGHT

S3, S3F

PROJECT: _____

TYPE: _____

NOTE: _____

DIMMING DRIVER COMPATIBILITY

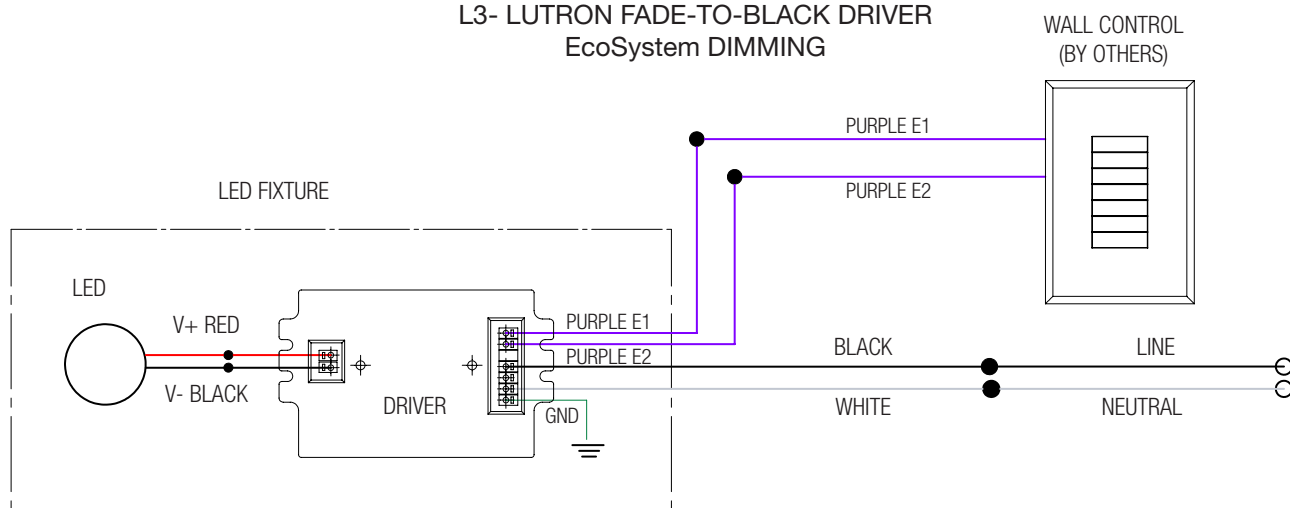
DIMMER LIST

| "L3" Lutron Fade-to-Black | |
|---------------------------|------------------------------|
| Dimmer Information | |
| Manufacturer | Product |
| Lutron | LQSE-2ECO-D |
| | RMJ-ECO32-DV-B |
| | FCJ/FCJS-ECO |
| | QSN-1ECO-S |
| | QSN-2ECO-S |
| | EcoSystem ESN |
| | Grafik Eye QS with EcoSystem |
| | Quantum |

NOTES:

Wiring diagrams are examples of typical installations intended to illustrate the number of wires that must be run to fixture. These diagrams are not intended to specify all equipment necessary for a given dimming circuit. Refer to specific dimmer manufacturer's documentation for details.

L3- LUTRON FADE-TO-BLACK DRIVER EcoSystem DIMMING



IMPORTANT SAFETY INSTRUCTIONS

- SAVE THESE INSTRUCTIONS

1. Keep these instructions in a safe place for future reference.
2. Only qualified electricians in accordance with local codes should install these fixtures.
3. De-energize the electrical circuit at the circuit breaker prior to installation process or servicing.
4. Make sure all connections are in accordance with the National Electrical Code and any local regulations.
5. Cap any wires not used separately (not together).



SPEC-00284 GYROSHIFT-MULTIPLES, 3", V-1.3, UPDATED 10/14/2022

GYROSHIFT MULTIPLES 3" ADJUSTABLE DOWNLIGHT

S3, S3F

PROJECT: _____

TYPE: _____

NOTE: _____

DIMMING DRIVER COMPATIBILITY

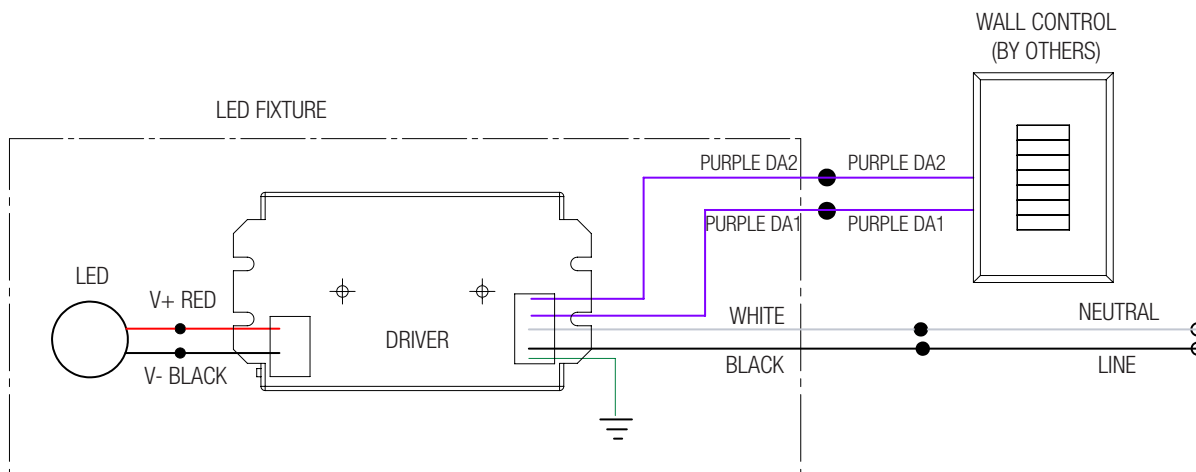
DIMMER LIST

| "EL1" eldoLED DALI 1% | |
|-----------------------|---------------|
| Dimmer Information | |
| Manufacturer | Product |
| | DALI Controls |

NOTES:

Wiring diagrams are examples of typical installations intended to illustrate the number of wires that must be run to fixture. These diagrams are not intended to specify all equipment necessary for a given dimming circuit. Refer to specific dimmer manufacturer's documentation for details.

EL1- eldoLED DRIVER DALI DIMMING



IMPORTANT SAFETY INSTRUCTIONS

- SAVE THESE INSTRUCTIONS

1. Keep these instructions in a safe place for future reference.
2. Only qualified electricians in accordance with local codes should install these fixtures.
3. De-energize the electrical circuit at the circuit breaker prior to installation process or servicing.
4. Make sure all connections are in accordance with the National Electrical Code and any local regulations.
5. Cap any wires not used separately (not together).



SPEC-00284 GYROSHIFT-MULTIPLES, 3", V-1.3, UPDATED 10/14/2022

GYROSHIFT MULTIPLES 3" ADJUSTABLE DOWNLIGHT

S3, S3F

PROJECT: _____

TYPE: _____

NOTE: _____

DIMMING DRIVER COMPATIBILITY

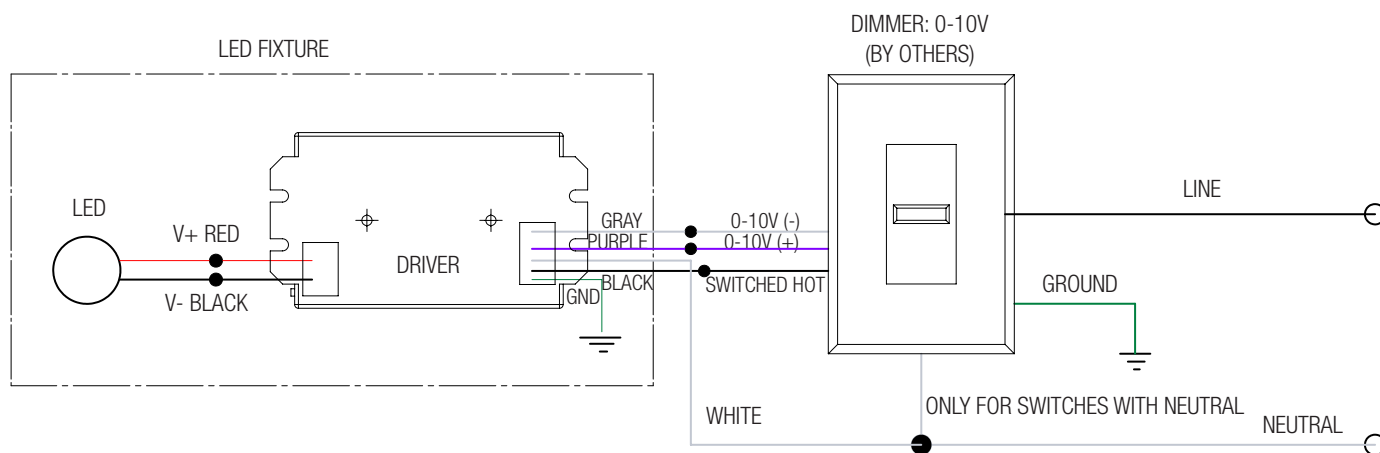
DIMMER LIST

| "EL2"eldoLED 0-10V 1% | |
|-----------------------|----------------|
| Dimmer Information | |
| Manufacturer | Product |
| Leviton | IP740-DLX |
| Lightolier | ZP600FAM120 |
| Lutron | DVTV |
| | NTFTV |
| | NFTV |
| Creston | CLS-EXP-DIMFLV |
| | DIN-4DIMFLV4 |
| | DIN-A08 |
| | GLX-DIMFLV8 |

NOTES:

Wiring diagrams are examples of typical installations intended to illustrate the number of wires that must be run to fixture. These diagrams are not intended to specify all equipment necessary for a given dimming circuit. Refer to specific dimmer manufacturer's documentation for details.

EL2- eldoLED DRIVER 0-10V DIMMING



IMPORTANT SAFETY INSTRUCTIONS

- SAVE THESE INSTRUCTIONS

1. Keep these instructions in a safe place for future reference.
2. Only qualified electricians in accordance to local codes should install these fixtures.
3. De-energize the electrical circuit at the circuit breaker prior to installation process or servicing.
4. Make sure all connections are in accordance with the National Electrical Code and any local regulations.
5. Cap any wires not used separately (not together).