



SPEC-00274 ACROBAT 2.0, 1", V-6.2, UPDATED 06/12/2023

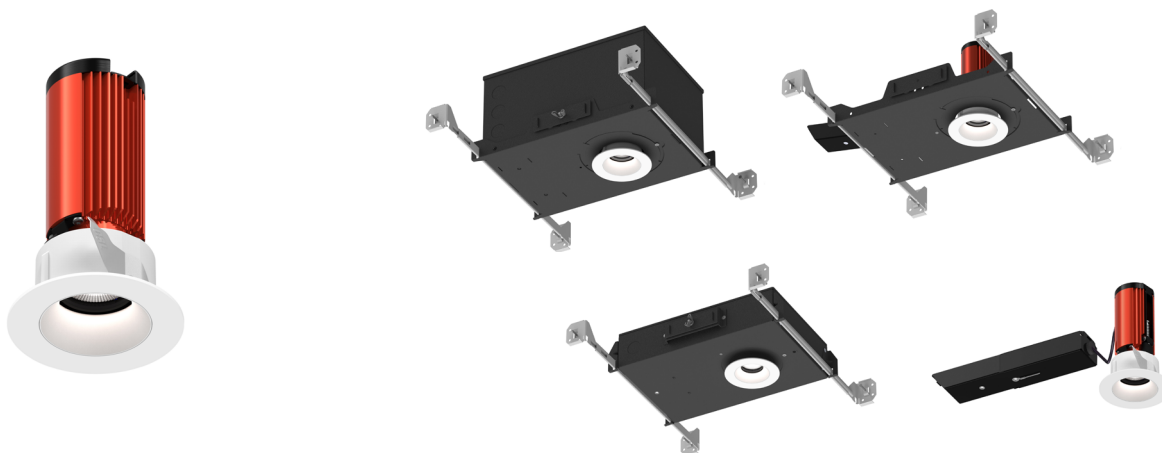
ACROBAT 1" LED DOWNLIGHT

A1-IC, A1-NC, A1-RM
A1-SIC, A1-SNC

PROJECT: _____

TYPE: _____

NOTE: _____



SILENT VU™ OPTICS TECHNOLOGY

| | |
|------------|---|
| OPTICS | 10°, 30°, 50°, 80° Field Changeable |
| ADJUSTABLE | 0° to 30° tilt (Adjustable housings only) |
| MEDIA | Clear, Solite, Frosted, Linear Spread, Hex Louver |

LED LIGHT ENGINE

| | |
|------------------|--------------------------------------|
| RATED WATTAGE | 10W or 15W |
| DELIVERED LUMENS | Up to 1197 lm @ 4000K |
| EFFICACY | Up to 81.5 LPW @ 4000K |
| CCT @ 90CRI | 2700K, 3000K, 3500K, 4000K, Warm Dim |
| COLOR QUALITY | 90+ CRI, 2-Step SDCM |
| LED LIFETIME | 55,000 hours @ L90 |

DELIVERED LUMENS MATRIX

| | | 10° Optic | 30° Optic | 50° Optic | 80° Optic |
|---------|------------------|-----------|-----------|-----------|-----------|
| 10 Watt | 2700K (90CRI) | 683 lm | 729 lm | 652 lm | 606 lm |
| | 3000K (90CRI) | 724 lm | 772 lm | 691 lm | 643 lm |
| | 3500K (90CRI) | 765 lm | 816 lm | 730 lm | 679 lm |
| | 4000K (90CRI) | 786 lm | 839 lm | 751 lm | 698 lm |
| | Warm Dim (98CRI) | 492 lm | 526 lm | 472 lm | 359 lm |
| 15 Watt | 2700K (90CRI) | 975 lm | 1040 lm | 931 lm | 865 lm |
| | 3000K (90CRI) | 1033 lm | 1102 lm | 986 lm | 917 lm |
| | 3500K (90CRI) | 1091 lm | 1164 lm | 1041 lm | 968 lm |
| | 4000K (90CRI) | 1122 lm | 1197 lm | 1071 lm | 996 lm |
| | Warm Dim (98CRI) | 763 lm | 815 lm | 732 lm | 557 lm |

POWER SUPPLY

| | |
|---------------|--|
| INPUT VOLTAGE | 120-277V, 50/60Hz |
| DIMMING | Multiple dimming drivers available |
| SERVICABILITY | Below Ceiling Access (Above ceiling access required when using L3, EL1, EL2, DMX drivers) |

TRIM OPTIONS

- Fixed or Adjustable
- Standard or Trimless
- Wet Location
- Round or Square
- Pinhole, Slot Pinhole

TRIM COLORS

- White
- Black
- Custom Color
- Champagne
- Satin Aluminum

REFLECTOR COLORS

- White
- Black
- Clear Alzak
- Champagne
- Satin Aluminum
- Custom Color

HOUSING INSTALLATION

- New Construction includes (2) galvanized steel adjustable hanger bars
- Remodel option available
- 5/8" – 2" ceiling thickness
- Min Plenum Height: 2½" Shallow, 5½" Adjustable
- Ceiling Material: Drywall, T-bar grid, Wood and Millwork
- Steel junction box with up to (6) ½" knockouts
- IC, SIC models are Air Tight
- IC, SIC models are CCEA (Chicago Plenum)
(Note: polycell spray-in foam insulation must be kept 3" from housing)

LISTINGS AND WARRANTY

| | |
|--|--|
| cULus Listed for 40°C Ambient | ASTM E283 Certified Airtight for IC Rated Housings |
| UL Listed for Damp Location (All Styles) | UL Listed for Wet Location (Wet Location Trim Style) |
| IC Rated and Non IC Rated Available | CCEA (Chicago Plenum) Approved for IC Rated Housings |
| Five (5) years limited warranty | CA Title 24-JA8 Compliant |





SPEC-00274 ACROBAT 2.0, 1", V-6.2, UPDATED 06/12/2023

ACROBAT
1" LED DOWNLIGHTA1-IC, A1-NC, A1-RM
A1-SIC, A1-SNC

PROJECT: _____

TYPE: _____

NOTE: _____

ORDER MATRIX**A1-IC, A1-NC, A1-RM****1" NEW CONSTRUCTION / REMODEL HOUSING (EXAMPLE: A1-IC-RST-10S-SHB)**

| HOUSING BASE | | | |
|----------------------------------|---------------------------|--|--|
| FAMILY APERTURE | INSTALLATION TYPE | | TRIM SHAPE |
| A1- Acrobat 1" | IC | (Adjustable New Construction, IC, CCEA) | -R (Round) |
| | NC | (Adjustable New Construction) | -S (Square) |
| | RM | (Adjustable Remodel) | |
| DRIVER ASSEMBLY | | | |
| WATTAGE | LED DIMMING DRIVER | | HANGER BAR |
| -10 (10 Watt) | S⁵ | (Universal Dim Driver: 1%-100% 0-10V, TRIAC, ELV, 120V/277V) | -SHB (Standard) |
| -15¹ (15 Watt) | L3^{2,3,4} | (Lutron Hi-Lume® Dim Driver: 1%-100% EcoSystem, 120V/277V) | -C24 (24" C-Channel) |
| | EL1^{2,3} | (EldoLED DALI Dim: 1%-100% DALI, 120V/277V) | -C48 (48" C-Channel) |
| | EL2^{2,3} | (EldoLED Dim: 1%-100% 0-10V, 120V/277V) | |
| | DMX^{2,3} | (DMX Dim: 1%-100% DMX, 120V/277V) | |
| | | REMOTE LED DIMMING DRIVER | |
| | | SR1⁵ (Remote Universal Dim: 1%-100% 0-10V, TRIAC, or ELV, 120V/277V) | Hanger bars not included with RM housings. |
| | | | |

1. 15 Watt option only available for NC (Adjustable New Construction), RM (Adjustable Remodel) housings.

2. Driver access above ceiling only.

3. Driver only available for IC and NC housings.

4. Ambient temperature rated for 25 C.

5. TRIAC, ELV dimming for 120V only.

6. WD CCT must also be selected in Module section.

1" NEW CONSTRUCTION / REMODEL TRIM (EXAMPLE: A1-2790-RSTWT-STWTNL-30)

| FAMILY APERTURE | LED PERFORMANCE | | TRIM | | |
|---------------------------------------|--------------------------------------|---------------------|-------------------------------|------------------------------------|--------------------------------------|
| | CCT | CRI | TRIM SHAPE | TRIM STYLE | TRIM FINISH |
| A1- Acrobat 1" | 27 (2700K) | 90 (90 CRI) | -R (Round) | ST (Standard) | TL (Trimless) |
| | 30 (3000K) | | -S (Square) | TL (Trimless) | WT (White) |
| | 35 (3500K) | | | | BK (Black) |
| | 40 (4000K) | | | | CN (Champagne) |
| | WD⁵ (1800K~3000K) | | | | SA (Satin Aluminum) |
| | | | | | CC¹ (Custom Color) |
| REFLECTOR | | | OPTIC AND MEDIA | | |
| REFLECTOR STYLE | REFLECTOR FINISH | REFLECTOR LENS | OPTIC | MEDIA 1 | MEDIA 2 |
| -ST² (Standard) | WT (White) | NL (No Lens) | -10 (10° Spot) | (blank) (None) | (blank) (None) |
| -PH² (Pinhole) | BK (Black) | CL (Clear) | -30 (30° Narrow Flood) | CL (Clear Lens) | CL (Clear Lens) |
| -SP² (Slot Pinhole) | CA³ (Clear Alzak) | MP (Solite) | -50 (50° Flood) | MP (Solite Lens) | MP (Solite Lens) |
| -SW (Wall Wash) | CN (Champagne) | FR (Frosted) | -80 (80° Wide Flood) | FR (Frosted Lens) | FR (Frosted Lens) |
| | SA (Satin Aluminum) | | | LS (Linear Spread Lens) | LS (Linear Spread Lens) |
| | CC¹ (Custom Color) | | | HX⁴ (Hex Louver) | |

1. Custom color only available for ST (Standard) Trim and ST (Standard) Reflector only, contact CSL for details.

2. Wet Location rated when used with Additional Reflector Lens.

3. CA (Clear Alzak) Finish only available for R (Round), ST (Standard) Reflector.

4. Cannot be used with a second Media.

5. Media 1 lens required. For WD with 10°, 30°, 50° Optic use MP (Solite Lens).

For WD with 80° Optic use FR (Frosted Lens).



SPEC-00274 ACROBAT 2.0, 1", V-6.2, UPDATED 06/12/2023

**ACROBAT
1" LED DOWNLIGHT****A1-IC, A1-NC, A1-RM
A1-SIC, A1-SNC**

PROJECT: _____

TYPE: _____

NOTE: _____

ORDER MATRIX**A1-SIC, A1-SNC****1" SHALLOW PLENUM NEW CONSTRUCTION HOUSING (EXAMPLE: A1-SIC-RST-02790-30-10S-SHB)**

| HOUSING BASE | | | | | |
|-----------------------------|--|-----------------|------------------------|-------------------------|-------------------------|
| FAMILY APERTURE | INSTALLATION TYPE | | | TRIM SHAPE | TRIM STYLE |
| A1- Acrobat 1" | SIC (Shallow Plenum New Construction, IC, CCEA) | | | -R (Round) | ST (Standard) |
| | SNC (Shallow Plenum New Construction) | | | -S (Square) | TL (Trimless) |
| CEILING | | LED PERFORMANCE | | OPTIC AND MEDIA | |
| CEILING THICKNESS | CCT | CRI | OPTIC | MEDIA 1 | MEDIA 2 |
| -0 (5/8" Ceiling Thickness) | 27 (2700K) | 90 (90 CRI) | -10 (10° Spot) | (blank) (None) | (blank) (None) |
| -1 (1¼" Ceiling Thickness) | 30 (3000K) | | -30 (30° Narrow Flood) | CL (Clear Lens) | CL (Clear Lens) |
| -2 (2" Ceiling Thickness) | 35 (3500K) | | -50 (50° Flood) | MP (Solite Lens) | MP (Solite Lens) |
| | 40 (4000K) | | -80 (80° Wide Flood) | FR (Frosted Lens) | FR (Frosted Lens) |
| | WD³ (1800K~3000K) | | | LS (Linear Spread Lens) | LS (Linear Spread Lens) |
| | | | HX¹ (Hex Louver) | | |
| DRIVER ASSEMBLY | | | | | |
| WATTAGE | LED DIMMING DRIVER | | | HANGER BAR | |
| -10 (10 Watt) | S⁴ (Universal Dim Driver: 1%-100% 0-10V, TRIAC, ELV, 120V/277V) | | | -SHB (Standard) | |
| -15² (15 Watt) | REMOTE LED DIMMING DRIVER | | | -C24 (24" C-Channel) | |
| | SR1⁴ (Remote Universal Dim: 1%-100% 0-10V, TRIAC, or ELV, 120V/277V) | | | -C48 (48" C-Channel) | |

1. Cannot be used with a second media.

2. 15 Watt option only available for SNC (Shallow Plenum New Construction) only.

3. Media 1 lens required. For WD with 10°, 30°, 50° Optic use MP (Solite Lens). For WD with 80° Optic use FR (Frosted Lens).

4. TRIAC, ELV dimming for 120V only.

1" SHALLOW PLENUM NEW CONSTRUCTION TRIM (EXAMPLE: A1-RSTWT-STWT-NL)

| TRIM | | | | REFLECTOR | | |
|-----------------------|---------------------------------------|--|--------------------------------------|---------------------------------------|--------------------------------------|----------------------|
| FAMILY APERTURE | TRIM SHAPE | TRIM STYLE | TRIM FINISH | REFLECTOR STYLE | REFLECTOR FINISH | REFLECTOR LENS |
| A1- Acrobat 1" | R (Round) S (Square) | ST (Standard) TL (Trimless) | TL (Trimless) | -ST² (Standard) | WT (White) | -NL (No Lens) |
| | | | WT (White/) | -PH² (Pinhole) | BK (Black) | -CL (Clear) |
| | | | BK (Black) | -SP² (Slot Pinhole) | CA³ (Clear Alzak) | -MP (Solite) |
| | | | CN (Champagne) | -SW (Wall Wash) | CN (Champagne) | -FR (Frosted) |
| | | | SA (Satin Aluminum) | | SA (Satin Aluminum) | |
| | | | CC¹ (Custom Color) | | CC¹ (Custom Color) | |

1. Custom color only available for ST (Standard) Trim and ST (Standard) Reflector only, contact CSL for details.

2. Wet Location rated when used with Additional Reflector Lens.

3. CA (Clear Alzak) Finish only available for R (Round), ST (Standard) Reflector.

EMERGENCY OPTIONS**EM-1000** (25W Remote Inverter)**EM-1003** (35W Remote Inverter)**EM-1004** (50W Remote Inverter)**EM-1002** (10W Remote Inverter)**EM-1003-CA** (35W Remote Inverter) Title 20**EM-1006** (25W Remote Inverter) Title 20



ACROBAT 1" LED DOWNLIGHT

A1-IC, A1-NC, A1-RM
A1-SIC, A1-SNC

PROJECT: _____

TYPE: _____

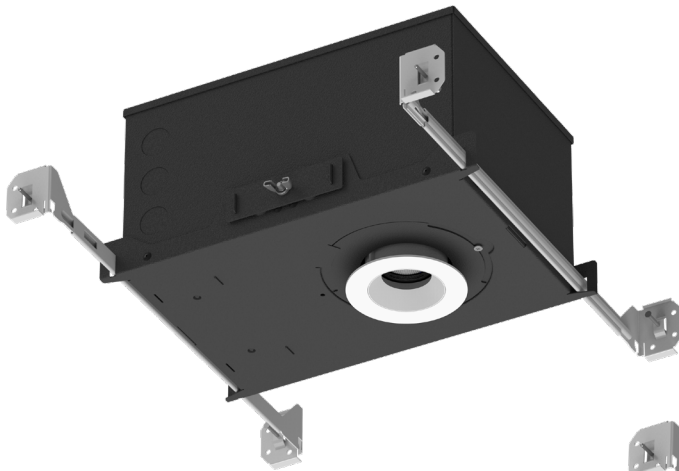
NOTE: _____

SPEC-00274 ACROBAT 2.0, 1", V-6.2, UPDATED 06/12/2023

HOUSING AND LIGHT ENGINE LINE DRAWINGS

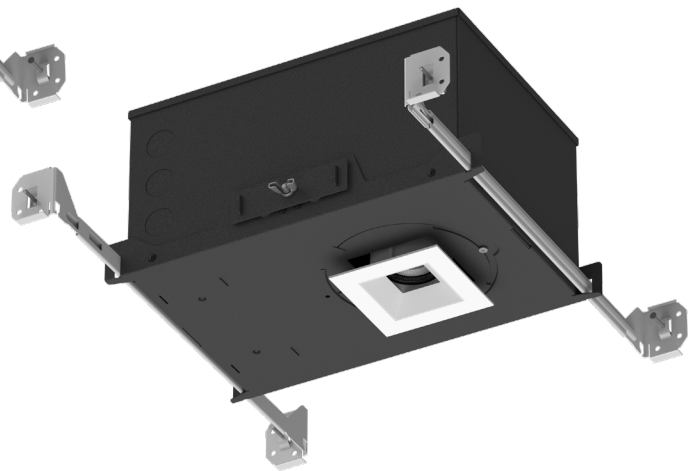
A1-IC

New Construction IC Housing



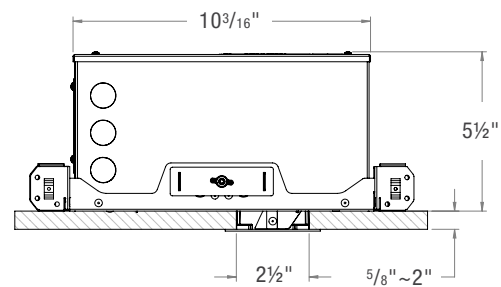
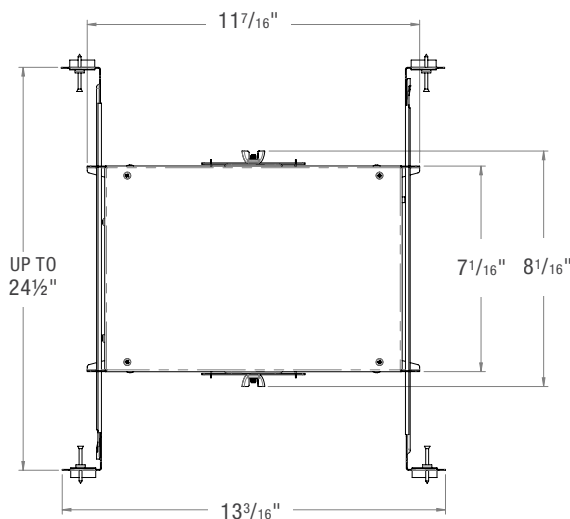
A1-IC-R

Acrobat 1" - Adjustable New Construction IC Housing - Round
with Round Trim



A1-IC-S

Acrobat 1" - Adjustable New Construction IC Housing - Square
with Square Trim





ACROBAT 1" LED DOWNLIGHT

A1-IC, A1-NC, A1-RM
A1-SIC, A1-SNC

PROJECT: _____

TYPE: _____

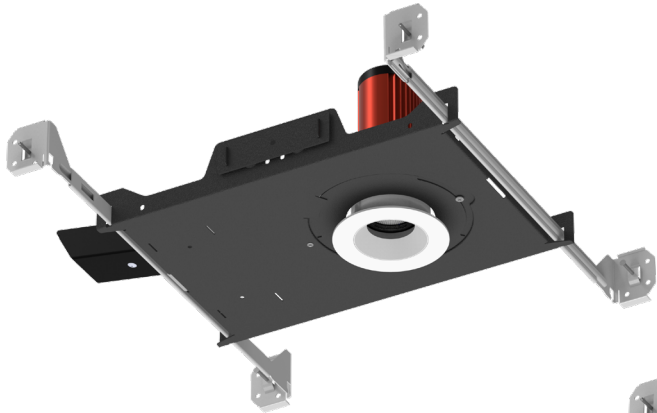
NOTE: _____

SPEC-00274 ACROBAT 2.0, 1", V-6.2, UPDATED 06/12/2023

HOUSING AND LIGHT ENGINE LINE DRAWINGS

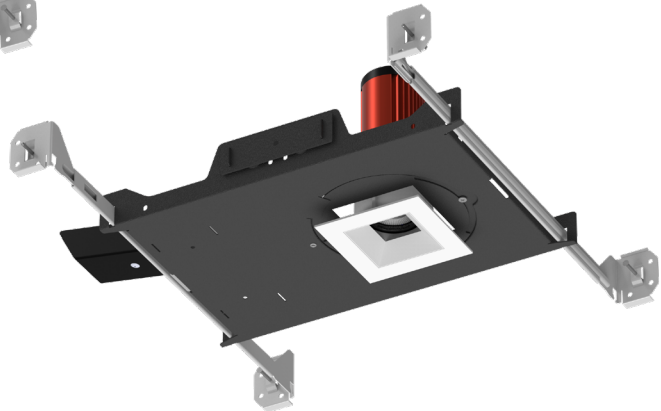
A1-NC

New Construction Housing



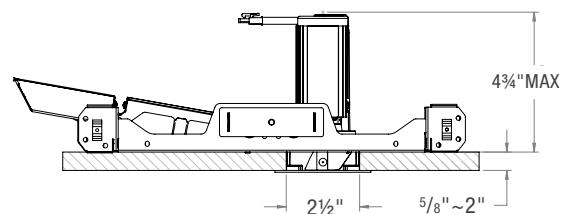
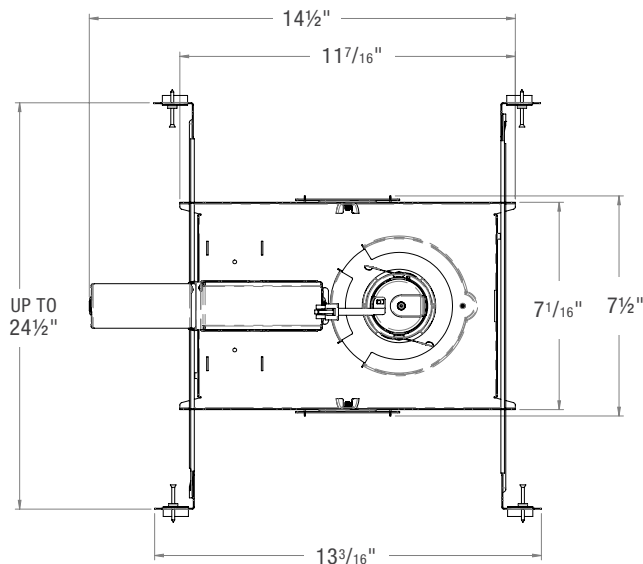
A1-NC-R

Acrobat 1" - Adjustable New Construction Housing - Round
with Round Trim



A1-NC-S

Acrobat 1" - Adjustable New Construction Housing - Square
with Square Trim





ACROBAT 1" LED DOWNLIGHT

A1-IC, A1-NC, A1-RM
A1-SIC, A1-SNC

PROJECT: _____

TYPE: _____

NOTE: _____

SPEC-00274 ACROBAT 2.0, 1", V-6.2, UPDATED 06/12/2023

HOUSING AND LIGHT ENGINE LINE DRAWINGS

A1-RM
Remodel Housing



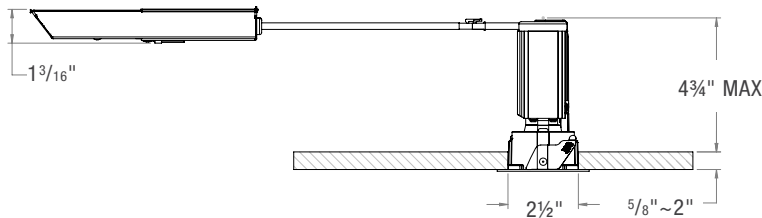
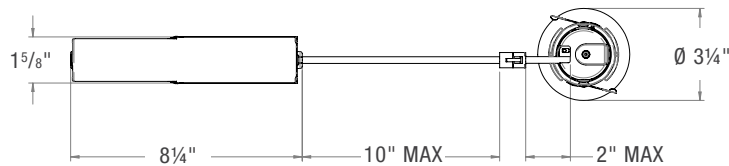
A1-RM-R

Acrobat 1" - Adjustable Remodel Housing - Round
with Round Trim



A1-RM-S

Acrobat 1" - Adjustable Remodel Housing - Square
with Square Trim





ACROBAT 1" LED DOWNLIGHT

A1-IC, A1-NC, A1-RM
A1-SIC, A1-SNC

PROJECT: _____

TYPE: _____

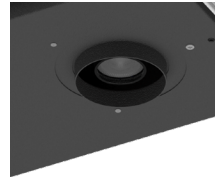
NOTE: _____

SPEC-00274 ACROBAT 2.0, 1", V-6.2, UPDATED 06/12/2023

HOUSING AND LIGHT ENGINE LINE DRAWINGS

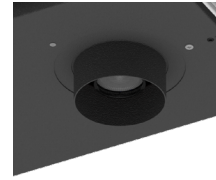
A1-SIC, A1-SNC
Shallow Plenum Housing

CEILING THICKNESS



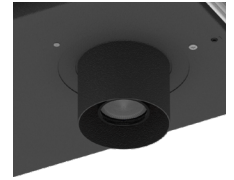
-0

5/8" Ceiling Thickness



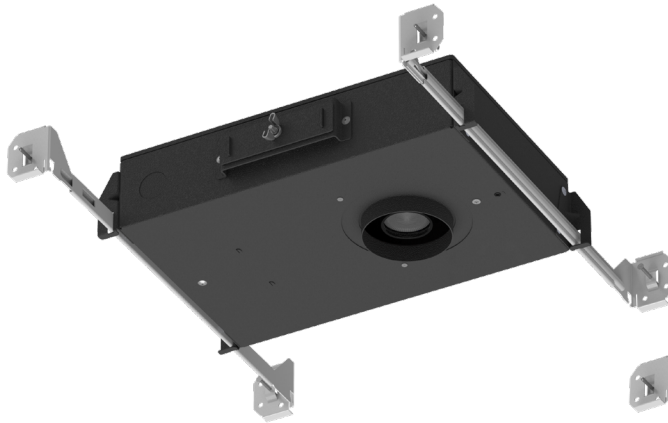
-1

1 1/2" Ceiling Thickness



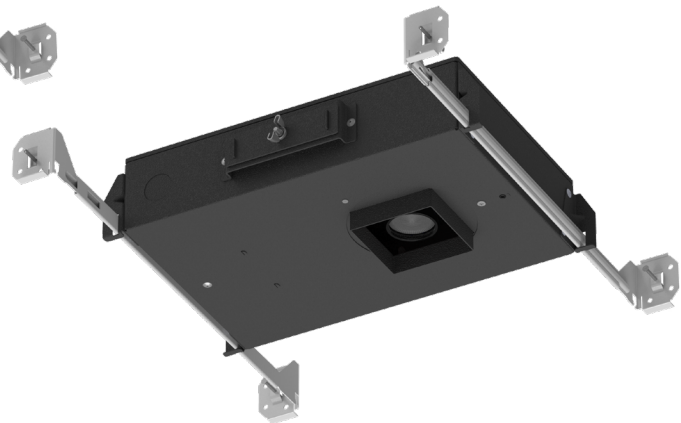
-2

2" Ceiling Thickness



A1-SIC-R

Acrobat 1" - Shallow Plenum New Construction IC Housing - Round



A1-SNC-R

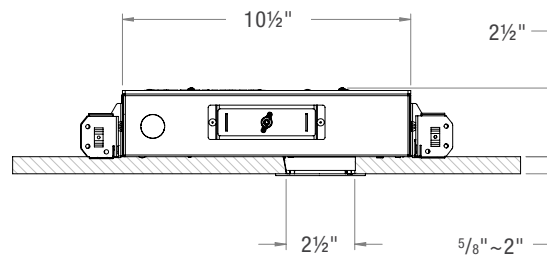
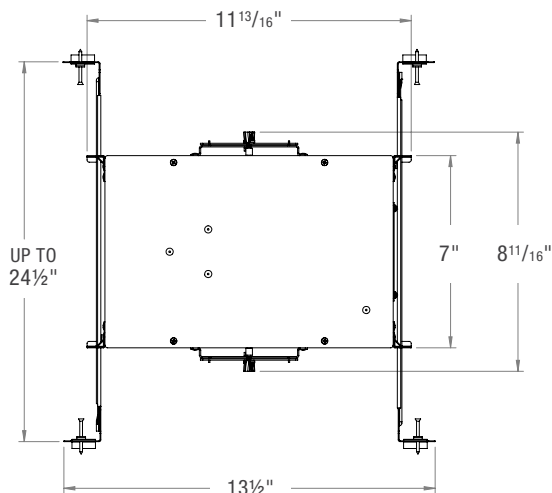
Acrobat 1" - Shallow Plenum New Construction Housing - Round

A1-SIC-S

Acrobat 1" - Shallow Plenum New Construction IC Housing - Square

A1-SNC-S

Acrobat 1" - Shallow Plenum New Construction Housing - Square





ACROBAT 1" LED DOWNLIGHT

A1-IC, A1-NC, A1-RM
A1-SIC, A1-SNC

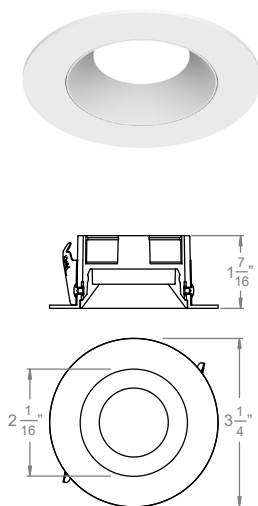
PROJECT: _____

TYPE: _____

NOTE: _____

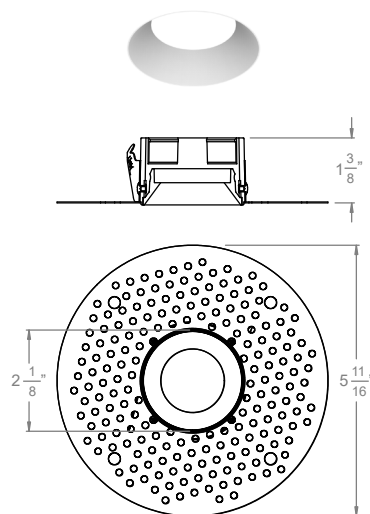
SPEC-00274 ACROBAT 2.0, 1", V-6.2, UPDATED 06/12/2023

TRIM STYLES



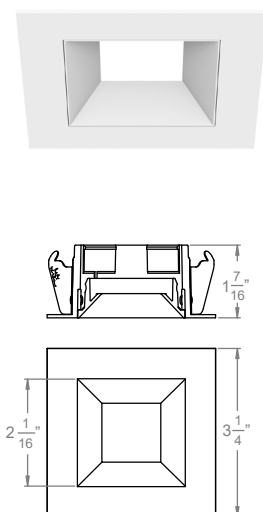
RST

1" Acrobat Round Standard Trim
(with Standard Reflector)



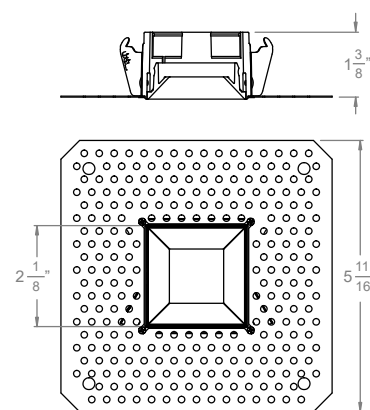
RTL

1" Acrobat Round Trimless Mud Plate
(with Standard Reflector)



SST

1" Acrobat Square Standard Trim
(with Standard Reflector)



STL

1" Acrobat Square Trimless Mud Plate
(with Standard Reflector)



ACROBAT 1" LED DOWNLIGHT

A1-IC, A1-NC, A1-RM
A1-SIC, A1-SNC

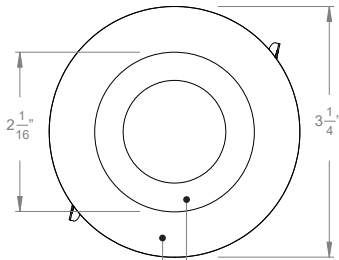
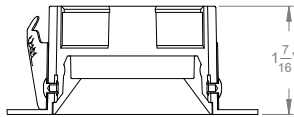
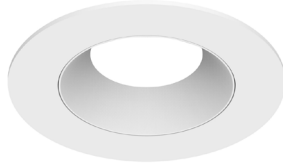
PROJECT: _____

TYPE: _____

NOTE: _____

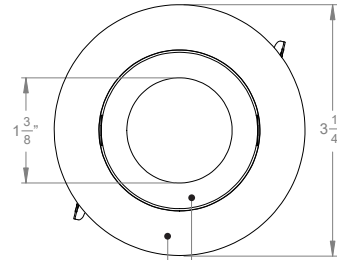
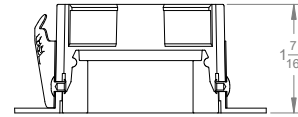
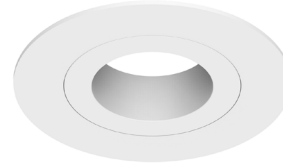
SPEC-00274 ACROBAT 2.0, 1", V-6.2, UPDATED 06/12/2023

REFLECTOR STYLE (ROUND)



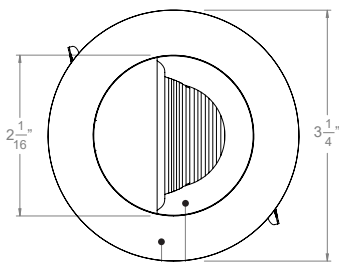
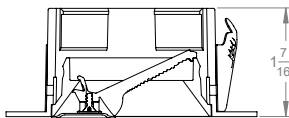
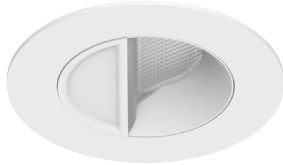
Trim Reflector
RST -ST

1" Acrobat Round Standard Trim
with Standard Reflector



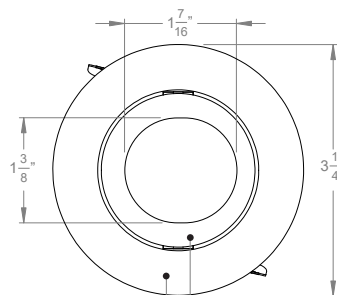
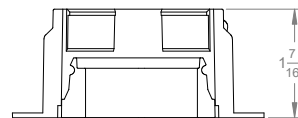
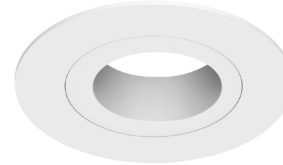
Trim Reflector
RST -PH

1" Acrobat Round Standard Trim
with Pinhole Reflector



Trim Reflector
RST -SW

1" Acrobat Round Standard Trim
with Wall Wash Reflector



Trim Reflector
RST -SP

1" Acrobat Round Standard Trim
with Slot Pinhole Reflector



ACROBAT 1" LED DOWNLIGHT

A1-IC, A1-NC, A1-RM
A1-SIC, A1-SNC

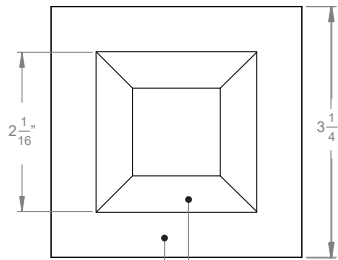
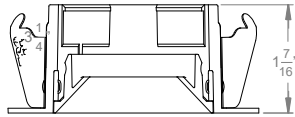
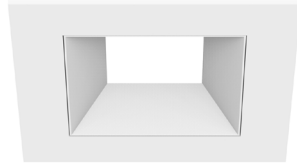
PROJECT: _____

TYPE: _____

NOTE: _____

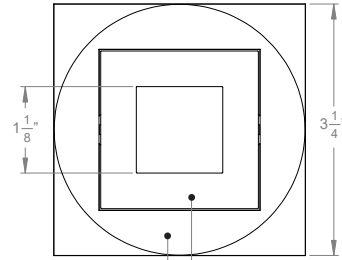
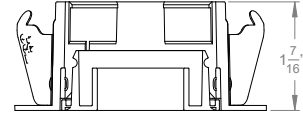
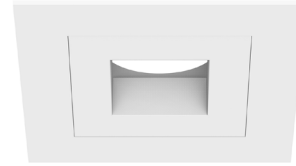
SPEC-00274 ACROBAT 2.0, 1", V-6.2, UPDATED 06/12/2023

REFLECTOR STYLE (SQUARE)



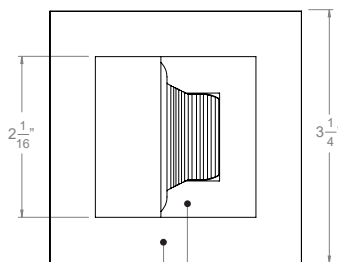
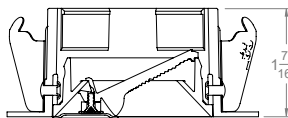
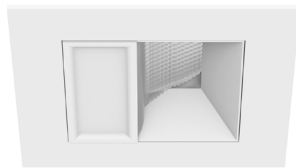
Trim Reflector
SST -ST

1" Acrobat Square Standard Trim
with Standard Reflector



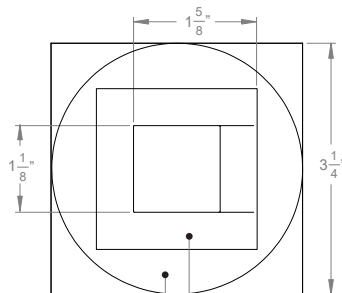
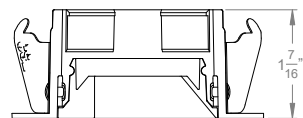
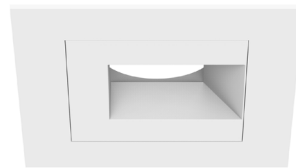
Trim Reflector
SST -PH

1" Acrobat Square Standard Trim
with Pinhole Reflector



Trim Reflector
SST -SW

1" Acrobat Square Standard Trim
with Wall Wash Reflector



Trim Reflector
SST -SP

1" Acrobat Square Standard Trim
with Slot Pinhole Reflector



SPEC-00274 ACROBAT 2.0, 1", V-6.2, UPDATED 06/12/2023

ACROBAT 1" LED DOWNLIGHT

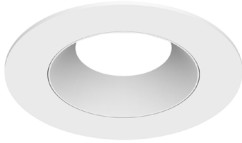
A1-IC, A1-NC, A1-RM
A1-SIC, A1-SNC

PROJECT: _____

TYPE: _____

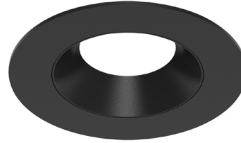
NOTE: _____

TRIM FINISHES



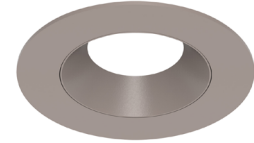
RSTWT-STWT

WT White Trim
WT White Reflector



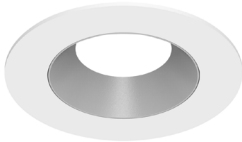
RSTBK-STBK

BK Black Trim
BK Black Reflector



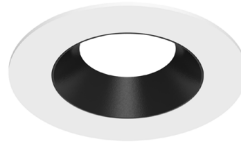
RSTCN-STCN

CN Champagne Trim
CN Champagne Reflector



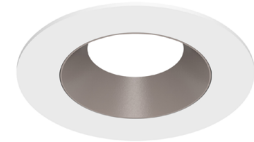
RSTWT-STSA

WT White Trim
SA Silver Reflector



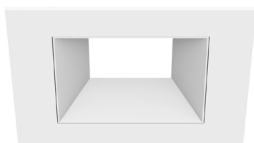
RSTWT-STBK

WT White Trim
BK Black Reflector



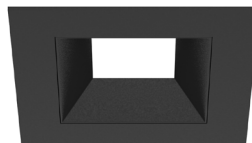
RSTWT-STCN

WT White Trim
CN Champagne Reflector



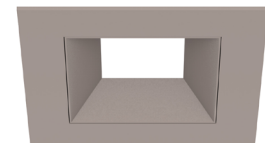
SSTWT-STWT

WT White Trim
WT White Reflector



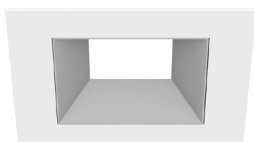
SSTBK-STBK

BK Black Trim
BK Black Reflector



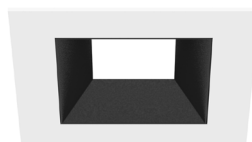
SSTCN-STCN

CN Champagne Trim
CN Champagne Reflector



SSTWT-STSA

WT White Trim
SA Silver Reflector



SSTWT-STBK

WT White Trim
BK Black Reflector



SSTWT-STCN

WT White Trim
CN Champagne Reflector



ACROBAT 1" LED DOWNLIGHT

A1-IC, A1-NC, A1-RM
A1-SIC, A1-SNC

PROJECT: _____

TYPE: _____

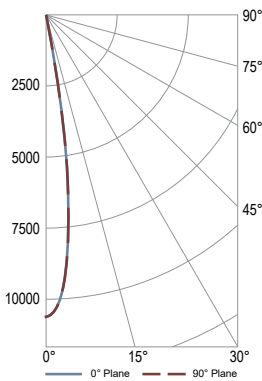
NOTE: _____

SPEC-00274 ACROBAT 2.0, 1", V-6.2, UPDATED 06/12/2023

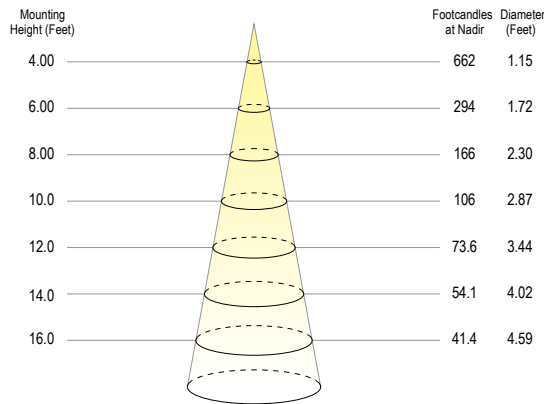
PHOTOMETRICS

Acrobat Downlight 1" NC, RM Models (2700K, 90 CRI, 10° Optic, 15W)
Round, Standard, White Trim

Polar Plot



Cone of Light Tabulation



| Voltage | Current | Power |
|-----------|----------|---------|
| 120.1 VAC | 0.1490 A | 17.60 W |

| Power Factor | Frequency | Current THD |
|--------------|-----------|-------------|
| 0.984 | 60 Hz | 16.1% |

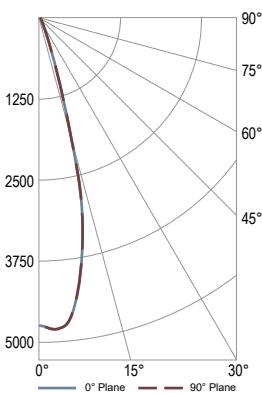
Summary of Results

Spacing Criteria Total Lumen Output: 975 Lumens
0-180: 0.29 Luminaire Efficacy: 55.4 lm/w
90-270: 0.29 Maximum Candela: 10596 Candela

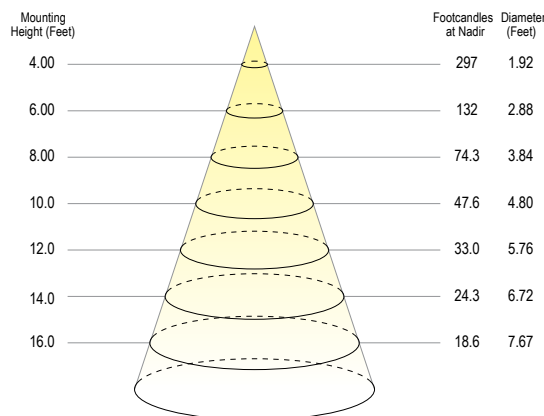
| Zone | Lumens | % of Luminaire |
|------|--------|----------------|
| 0-40 | 968 | 99.3% |
| 0-60 | 973 | 99.8% |
| 0-90 | 975 | 100.0% |

Acrobat Downlight 1" NC, RM Models (2700K, 90 CRI, 30° Optic, 15W)
Round, Standard, White Trim

Polar Plot



Cone of Light Tabulation



| Voltage | Current | Power |
|-----------|----------|---------|
| 120.1 VAC | 0.1490 A | 17.60 W |

| Power Factor | Frequency | Current THD |
|--------------|-----------|-------------|
| 0.984 | 60 Hz | 16.1% |

Summary of Results

Spacing Criteria Total Lumen Output: 1040 Lumens
0-180: 0.48 Luminaire Efficacy: 59.1 lm/w
90-270: 0.48 Maximum Candela: 4979 Candela

| Zone | Lumens | % of Luminaire |
|------|--------|----------------|
| 0-40 | 1035 | 99.0% |
| 0-60 | 1040 | 100.0% |
| 0-90 | 1040 | 100.0% |



SPEC-00274 ACROBAT 2.0, 1", V-6.2, UPDATED 06/12/2023

ACROBAT 1" LED DOWNLIGHT

A1-IC, A1-NC, A1-RM
A1-SIC, A1-SNC

PROJECT: _____

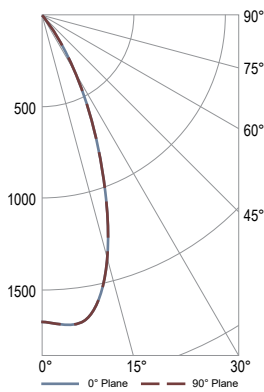
TYPE: _____

NOTE: _____

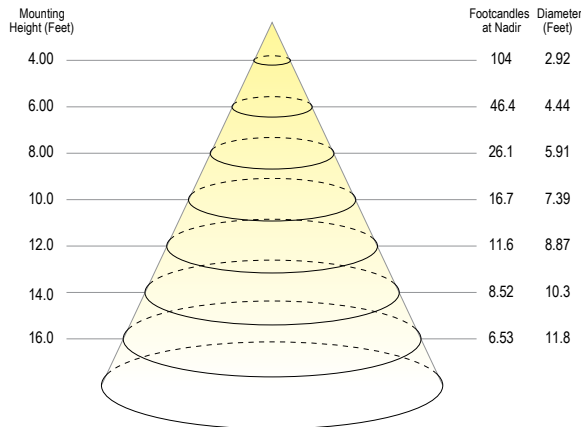
PHOTOMETRICS

Acrobat Downlight 1" NC, RM Models (2700K, 90 CRI, 50° Optic, 15W)
Round, Standard, White Trim

Polar Plot



Cone of Light Tabulation



| Voltage | Current | Power |
|-----------|----------|---------|
| 120.1 VAC | 0.1494 A | 17.65 W |

| Power Factor | Frequency | Current THD |
|--------------|-----------|-------------|
| 0.984 | 60 Hz | 16.1% |

Summary of Results

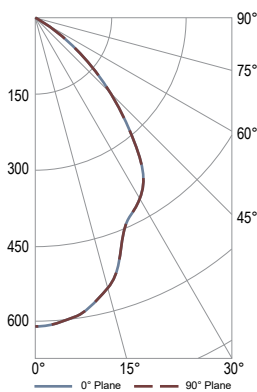
Spacing Criteria
0-180: 0.74
90-270: 0.74

Total Lumen Output: 931 Lumens
Luminaire Efficacy: 52.7 lm/w
Maximum Candela: 1688 Candela

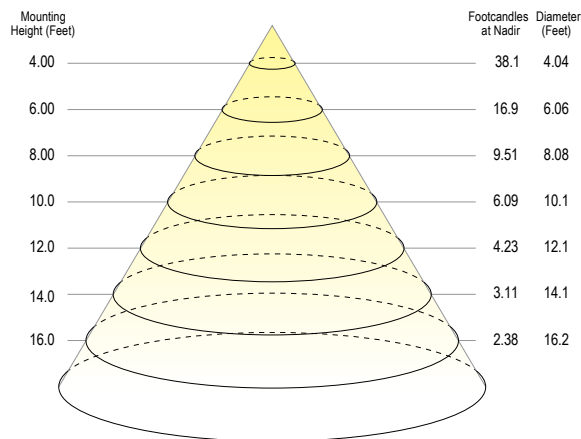
| Zone | Lumens | % of Luminaire |
|------|--------|----------------|
| 0-40 | 916 | 98.4% |
| 0-60 | 929 | 99.8% |
| 0-90 | 931 | 100.0% |

Acrobat Downlight 1" NC, RM Models (2700K, 90 CRI, 80° Optic, 15W)
Round, Standard, White Trim

Polar Plot



Cone of Light Tabulation



| Voltage | Current | Power |
|-----------|----------|---------|
| 120.0 VAC | 0.1490 A | 17.59 W |

| Power Factor | Frequency | Current THD |
|--------------|-----------|-------------|
| 0.984 | 60 Hz | 16.1% |

Summary of Results

Spacing Criteria
0-180: 1.01
90-270: 1.01

Total Lumen Output: 865 Lumens
Luminaire Efficacy: 49.2 lm/w
Maximum Candela: 609 Candela

| Zone | Lumens | % of Luminaire |
|------|--------|----------------|
| 0-40 | 640 | 73.9% |
| 0-60 | 859 | 99.3% |
| 0-90 | 865 | 100.0% |



SPEC-00274 ACROBAT 2.0, 1", V-6.2, UPDATED 06/12/2023

ACROBAT 1" LED DOWNLIGHT

A1-IC, A1-NC, A1-RM
A1-SIC, A1-SNC

PROJECT: _____

TYPE: _____

NOTE: _____

DIMMING DRIVER COMPATIBILITY

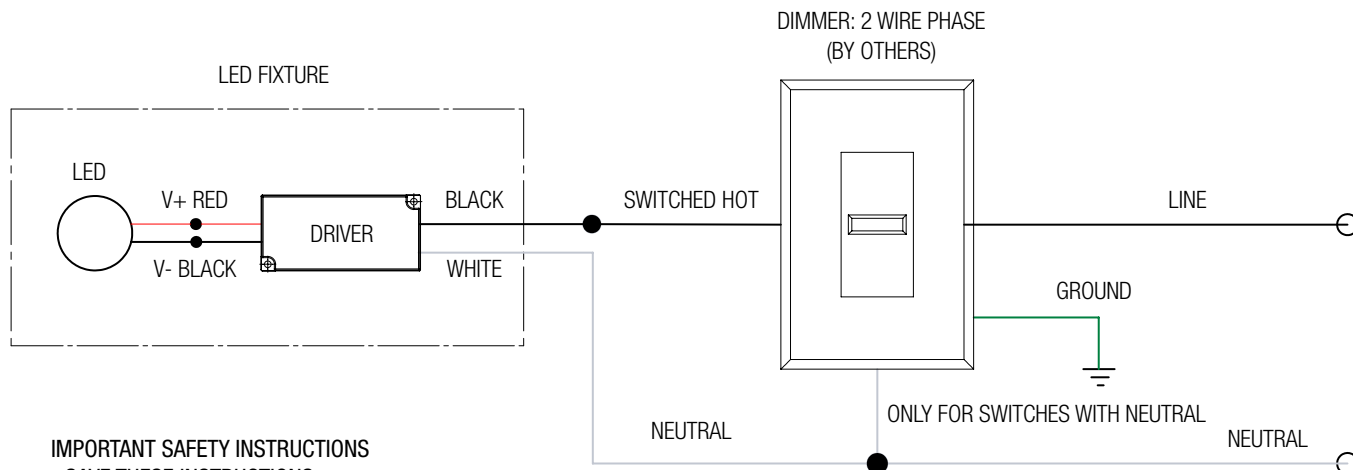
DIMMER LIST

| "S" ERP PHASE-CUT DIMMERS | | | |
|---------------------------|-----------|--------------|-----------|
| Dimmer Information | | | |
| Manufacturer | Product | Manufacturer | Product |
| Cooper | DAL06P | Lightolier | ZP260QEW |
| | DLC03P | Lutron | CT103P |
| | SLC03P | | DV600P |
| Leviton | 6161 | | DVCL-153P |
| | 6631-2 | | DVELV303P |
| | 6633-P | | FAELV500 |
| | 6673-10W | | LG600P |
| | 6683-IW | | MAELV600 |
| | IPE04 | | S600P |
| | IPI06-1LZ | | S-603PG |
| | VPE06 | | SELV300P |
| | | | TG-600P |
| | | | TGCL-153P |

NOTES:

Wiring diagrams are examples of typical installations intended to illustrate the number of wires that must be run to fixture. These diagrams are not intended to specify all equipment necessary for a given dimming circuit. Refer to specific dimmer manufacturer's documentation for details.

S- ERP DRIVER 2 WIRE PHASE DIMMING



IMPORTANT SAFETY INSTRUCTIONS - SAVE THESE INSTRUCTIONS

1. Keep these instructions in a safe place for future reference.
2. Only qualified electricians in accordance to local codes should install these fixtures.
3. De-energize the electrical circuit at the circuit breaker prior to installation process or servicing.
4. Make sure all connections are in accordance with the National Electrical Code and any local regulations.
5. Cap any wires not used separately (not together).



SPEC-00274 ACROBAT 2.0, 1", V-6.2, UPDATED 06/12/2023

ACROBAT 1" LED DOWNLIGHT

A1-IC, A1-NC, A1-RM
A1-SIC, A1-SNC

PROJECT: _____

TYPE: _____

NOTE: _____

DIMMING DRIVER COMPATIBILITY

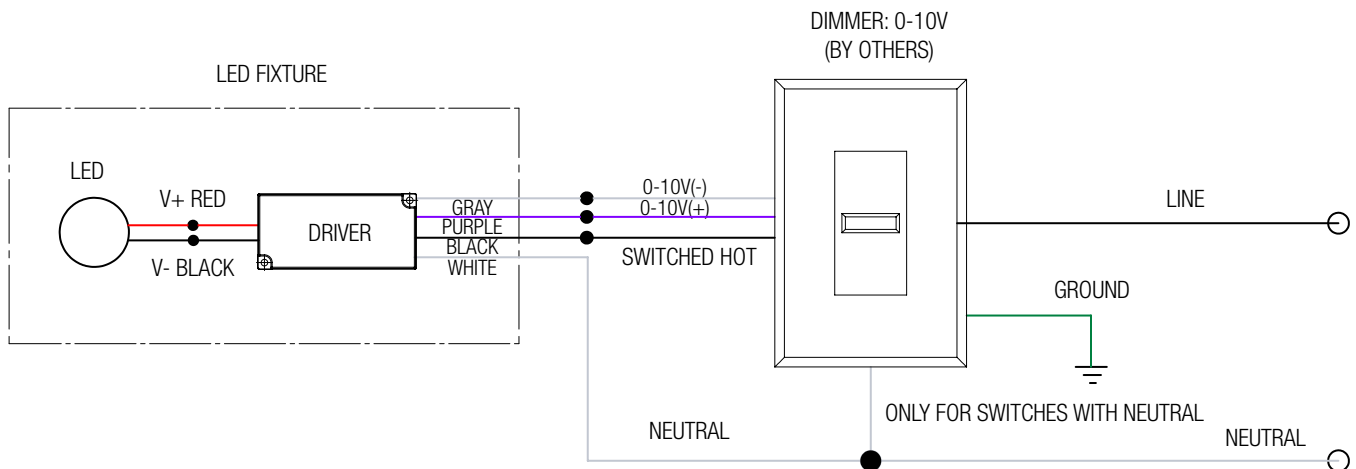
DIMMER LIST

| "S" ERP 0-10V | |
|--------------------|----------------|
| Dimmer Information | |
| Manufacturer | Product |
| Leviton | IP740-DLZ |
| Lightolier | ZP600FAM120 |
| | V2000FAMU |
| Lutron | DVTV |
| | NTFTV |
| Crestron | CLS-EXP-DIMFLV |
| | DIN-4DIMFLV4 |
| | DIN-A08 |
| | GLX-DIMFLV8 |

NOTES:

Wiring diagrams are examples of typical installations intended to illustrate the number of wires that must be run to fixture. These diagrams are not intended to specify all equipment necessary for a given dimming circuit. Refer to specific dimmer manufacturer's documentation for details.

S- ERP DRIVER 0-10V DIMMING



IMPORTANT SAFETY INSTRUCTIONS

- SAVE THESE INSTRUCTIONS

1. Keep these instructions in a safe place for future reference.
2. Only qualified electricians in accordance with local codes should install these fixtures.
3. De-energize the electrical circuit at the circuit breaker prior to installation process or servicing.
4. Make sure all connections are in accordance with the National Electrical Code and any local regulations.
5. Cap any wires not used separately (not together).



SPEC-00274 ACROBAT 2.0, 1", V-6.2, UPDATED 06/12/2023

ACROBAT 1" LED DOWNLIGHT

A1-IC, A1-NC, A1-RM
A1-SIC, A1-SNC

PROJECT: _____

TYPE: _____

NOTE: _____

DIMMING DRIVER COMPATIBILITY

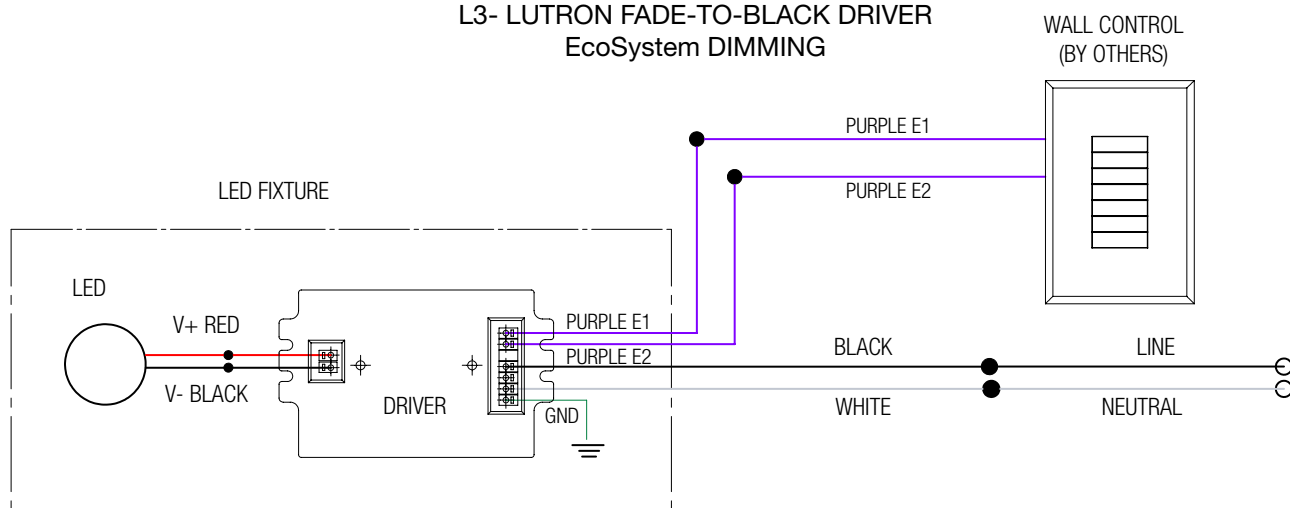
DIMMER LIST

| "L3" Lutron Fade-to-Black | |
|---------------------------|------------------------------|
| Dimmer Information | |
| Manufacturer | Product |
| Lutron | LQSE-2ECO-D |
| | RMJ-ECO32-DV-B |
| | FCJ/FCJS-ECO |
| | QSN-1ECO-S |
| | QSN-2ECO-S |
| | EcoSystem ESN |
| | Grafik Eye QS with EcoSystem |
| | Quantum |

NOTES:

Wiring diagrams are examples of typical installations intended to illustrate the number of wires that must be run to fixture. These diagrams are not intended to specify all equipment necessary for a given dimming circuit. Refer to specific dimmer manufacturer's documentation for details.

L3- LUTRON FADE-TO-BLACK DRIVER EcoSystem DIMMING



IMPORTANT SAFETY INSTRUCTIONS

- SAVE THESE INSTRUCTIONS

1. Keep these instructions in a safe place for future reference.
2. Only qualified electricians in accordance with local codes should install these fixtures.
3. De-energize the electrical circuit at the circuit breaker prior to installation process or servicing.
4. Make sure all connections are in accordance with the National Electrical Code and any local regulations.
5. Cap any wires not used separately (not together).

PROJECT: _____

TYPE: _____

NOTE: _____

DIMMING DRIVER COMPATIBILITY

DIMMER LIST

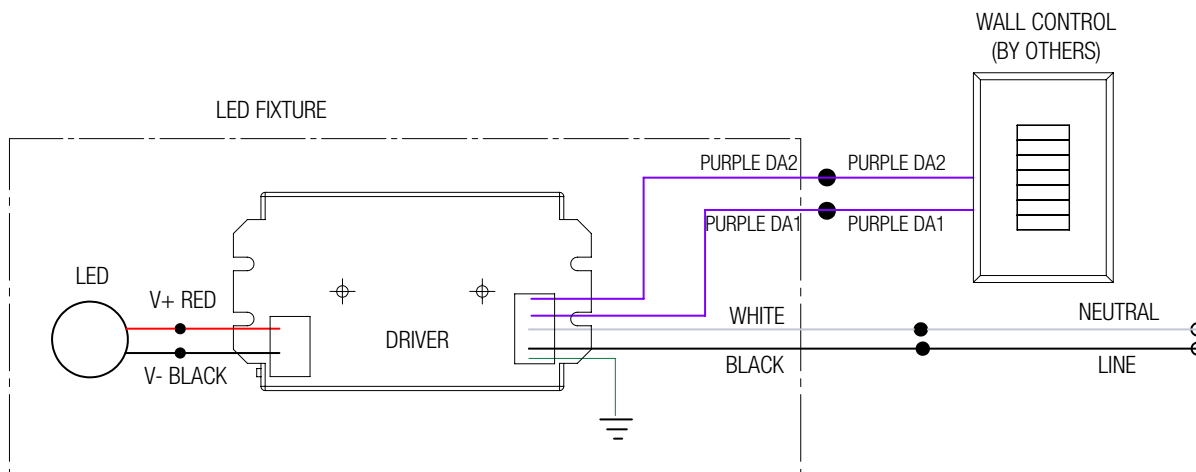
| | |
|-----------------------|---------------|
| "EL1"eIdoLED DALI 1 % | |
| Dimmer Information | |
| Manufacturer | Product |
| | DALI Controls |

NOTES:

Wiring diagrams are examples of typical installations intended to illustrate the number of wires that must be run to fixture. These diagrams are not intended to specify all equipment necessary for a given dimming circuit. Refer to specific dimmer manufacturer's documentation for details.

EL1- eldoLED DRIVER

DALI DIMMING



IMPORTANT SAFETY INSTRUCTIONS

- SAVE THESE INSTRUCTIONS

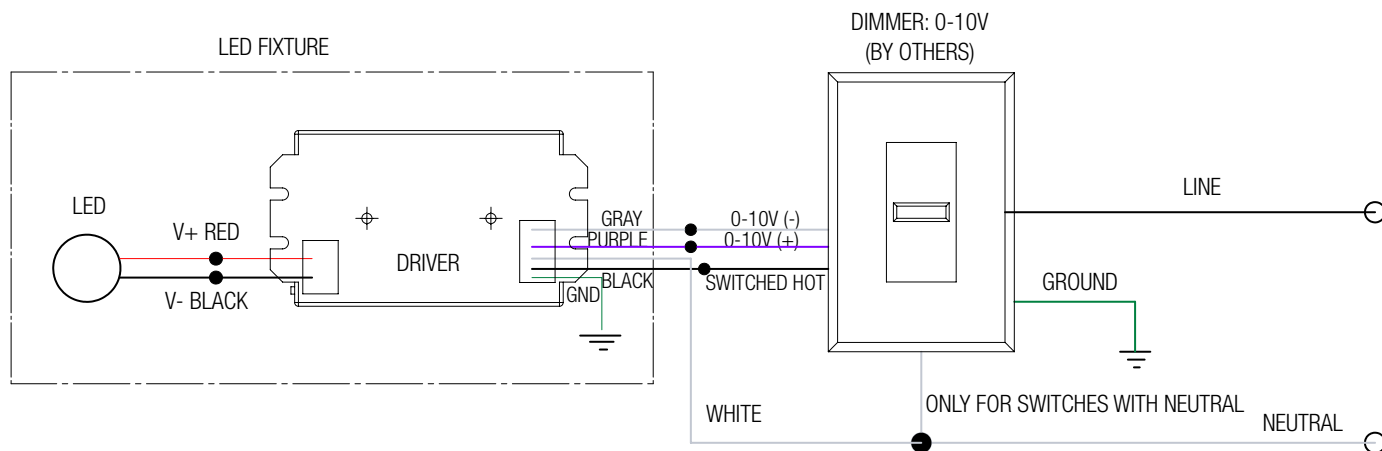
1. Keep these instructions in a safe place for future reference.
2. Only qualified electricians in accordance to local codes should install these fixtures.
3. De-energize the electrical circuit at the circuit breaker prior to installation process or servicing.
4. Make sure all connections are in accordance with the National Electrical Code and any local regulations.
5. Cap any wires not used separately (not together).

DIMMING DRIVER COMPATIBILITY

| "EL2"eldoLED 0-10V 1% | |
|-----------------------|----------------|
| Dimmer Information | |
| Manufacturer | Product |
| Leviton | IP740-DLX |
| Lightolier | ZP600FAM120 |
| Lutron | DVTV |
| | NTFTV |
| | NFTV |
| Crestron | CLS-EXP-DIMFLV |
| | DIN-4DIMFLV4 |
| | DIN-A08 |
| | GLX-DIMFLV8 |

EL2- eldoLED DRIVER

0-10V DIMMING



- IMPORTANT SAFETY INSTRUCTIONS**
- SAVE THESE INSTRUCTIONS
1. Keep these instructions in a safe place for future reference.
 2. Only qualified electricians in accordance to local codes should install these fixtures.
 3. De-energize the electrical circuit at the circuit breaker prior to installation process or servicing.
 4. Make sure all connections are in accordance with the National Electrical Code and any local regulations.
 5. Cap any wires not used separately (not together).



SPEC-00274 ACROBAT 2.0, 1", V-6.2, UPDATED 06/12/2023

ACROBAT 1" LED DOWNLIGHT

A1-IC, A1-NC, A1-RM
A1-SIC, A1-SNC

PROJECT: _____

TYPE: _____

NOTE: _____

DIMMING DRIVER COMPATIBILITY

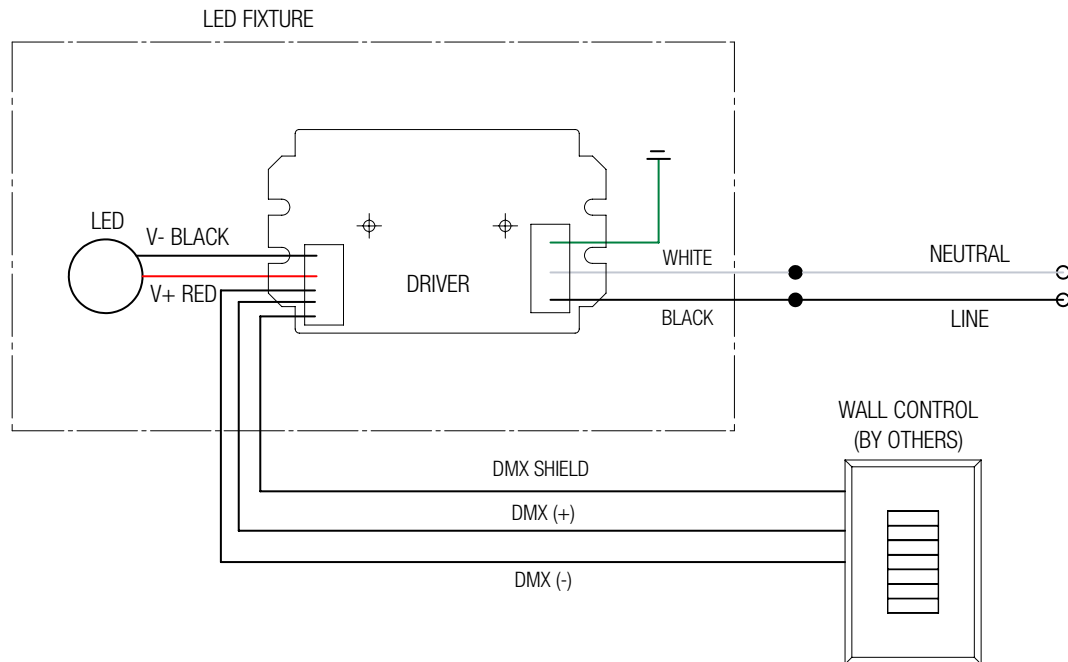
DIMMER LIST

| "DMX" Moons | |
|--------------------|--------------|
| Dimmer Information | |
| Manufacturer | Product |
| | DMX Controls |

NOTES:

Wiring diagrams are examples of typical installations intended to illustrate the number of wires that must be run to fixture. These diagrams are not intended to specify all equipment necessary for a given dimming circuit. Refer to specific dimmer manufacturer's documentation for details.

DMX- MOONS DRIVER DMX DIMMING



IMPORTANT SAFETY INSTRUCTIONS

- SAVE THESE INSTRUCTIONS

1. Keep these instructions in a safe place for future reference.
2. Only qualified electricians in accordance with local codes should install these fixtures.
3. De-energize the electrical circuit at the circuit breaker prior to installation process or servicing.
4. Make sure all connections are in accordance with the National Electrical Code and any local regulations.
5. Cap any wires not used separately (not together).