



Pricing May 2023  
Discount 57.7% from List prices

**spec**

MAS SIN 33721

## COOPER COLLECTION - BALA Lounge Seating

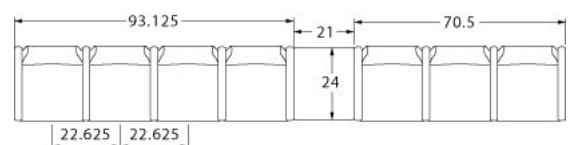
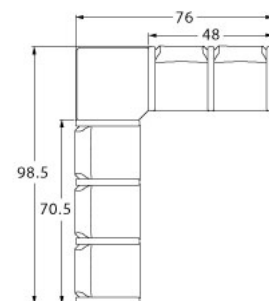
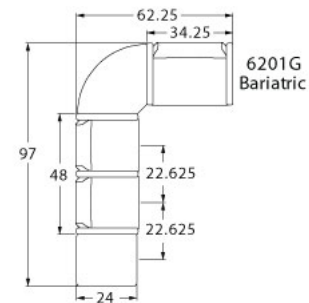
### LAYOUTS



### Description

- Spec's Bala offers the softer look and feel of wood, without sacrificing high durability.
- Your layout possibilities are unlimited with spacer, radius and corner tables – for both standard and bariatric seating in virtually any combination.
- Bariatric seating is a 30" wide seat and is load tested to 750 lbs. Cannot be connected to other bariatric seats.
- 21" seat width is standard.
- Standard in European Beech in any of 9 standard stains or stain-to-match for no extra charge.
- Choice of wood or polyurethane arms which are replaceable in the field.
- All models offer a choice of no center arms, half arms or full arms to the floor.
- Glides and separate seat and back are standard.
- Please send a drawing of the configuration you require with your order.
- For fabrics you wish railroaded or repeats larger than 5" x 5", please contact the factory with repeat information and yardage requirement will be provided.

### LAYOUTS AND DIMENSIONS





Pricing May 2023  
Discount 57.7% from List prices

spec™

MAS SIN 33721

## COOPER COLLECTION - BALA Lounge Seating



### PRODUCT CODE

6 2 2 3 M - WF

#### Collection

6 : Cooper

#### Series

2 : Bala

#### Center Arm

0 : Outside Arms

1 : Half Arms

2 : Full Arms

#### Number of Seats

1 : Single Seater

2 : Two Seater

3 : Three Seater

#### Chair Type

M : Mid Back

H : Highback

G : Bariatric

ME : Hip Chair

B : Bench

BG : Bariatric Bench

L : Loveseat

#### Arm Type and Profile

WF : Wood Flat

WR : Wood Round

PF : Poly Flat

PR : Poly Round

K: KYDEX® Flat Profile

### OPTIONS

#### ARM TYPE



Polyurethane



Wood



KYDEX®

#### PANEL ARMS



Half Panel Arm



Full Panel Arm

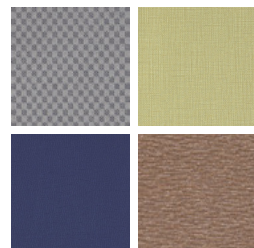
### FINISHES

#### FRAME



Select from one of our 9 standard wood stains or stain-to-match for no extra charge

#### FABRIC



Select fabrics from one of our textile partners

#### ARMS



Black

Sterling Grey

Taupe

Select from one of our 9 standard wood stains or stain-to-match for no extra charge

Note: flat polyurethane arm available in Black only.

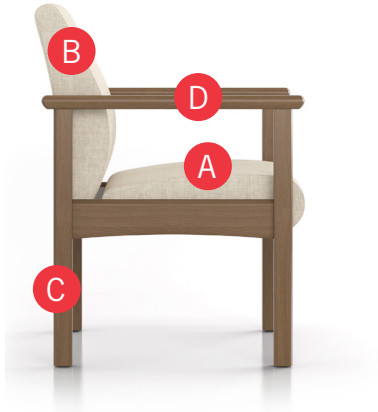
See Spectone Card or [specfurniture.com/tools-and-resources/product-resources/finishes](http://specfurniture.com/tools-and-resources/product-resources/finishes) for a complete list of finish options and colors.



## COOPER COLLECTION - BALA Lounge Seating

MAS SIN 33721

### HOW TO ORDER



#### Specify Model

- A** Specify Fabric - Seat<sup>1</sup>  
*Manufacturer, Pattern Name, Color*
- B** Specify Fabric - Back<sup>1</sup>  
*Manufacturer, Pattern Name, Color*
- C** Specify Frame Finish
- D** Specify Arm Type, Profile and Color  
Polyurethane (Flat or Round) / Wood (Flat or Round) / KYDEX<sup>®</sup> (\$) (Flat)

Optional: KYDEX<sup>®</sup> Arm, CAL 133, Moisture Barrier, Half or Full Panel Arms, Connecting and Freestanding Tables, Benches, Ottoman, Vinyl Headrest Insert

<sup>1</sup> When multiple fabrics are specified on two and three seat chairs, please provide a drawing and legend for fabric placement.

Model	Fabric - Seat	Fabric - Back	Frame Finish	Arm Type, Profile and Color
6201M	Momentum, Beeline, Canvas	Momentum, Beeline, Canvas	Studio Teak Stain	Wood, Flat, Studio Teak Stain



Pricing May 2023  
Discount 57.7% from List prices

spec™

MAS SIN 33721

## COOPER COLLECTION - BALA Lounge Seating

Designed for today's healthcare facilities

Single Seater with arms

### Standard Features

- Separate seat and back
- Wood components in Beech, in any of 9 standard stains or stain-to-match for no extra charge
- Threaded replaceable glides
- Use in connected layouts for no extra charge
- Velcro removable back covers
- Replaceable seats
- Arms replaceable in the field
- Ships assembled
- Ships 1/carton 15 cu ft

Contact Spec Customer Service to railroad fabrics (specify repeat info and yardage requirement will be provided) and for repeats greater than 5" x 5"

### Options

- Wood or polyurethane arms available in flat (WF or PF) or rounded (WR or PR) profile
- Round polyurethane arms available in Black, Sterling Grey and Taupe (RAL 7006)
- Flat polyurethane arms available in Black only
- KYDEX® flat arms available in Black (B) or Taupe RAL 7006 (T) or Sterling Grey (G)
- Connected and freestanding tables
- Antibacterial and antimicrobial fabrics available
- Different fabric on seat and back for no extra charge
- CAL 133



### Single Seater with arms

COM 1.75 yds

0.75 yd COM per single seat

1.0 yd COM per single back

MODEL	COM	GR 1	GR 2	GR 3	GR 4	GR 5	GR 6
<b>6201M</b>	<b>1381</b>	<b>1496</b>	<b>1534</b>	<b>1608</b>	<b>1724</b>	<b>1811</b>	<b>1926</b>

Dimensions (inches)

seat H	18.0	seat W	21.0	arm H	25.0
total H	33.75	total W	25.25	depth	25.0

**For KYDEX® flat arms add suffix K and \$374**

Meets BIFMA Seating Durability Test to 500 lbs per chair

CAL 133, add \$151 List per chair



6201M



Pricing May 2023  
Discount 57.7% from List prices

spec™

MAS SIN 33721

## COOPER COLLECTION - BALA Lounge Seating

Designed for today's healthcare facilities

Two and Three Seaters with outside arms

### Standard Features

- Separate seat and back
- Wood components in Beech, in any of 9 standard stains or stain-to-match for no extra charge
- Threaded replaceable glides
- Use in connected layouts for no extra charge
- Velcro removable back covers
- Replaceable seats
- Arms replaceable in the field
- Ships assembled
- Ships 1/carton 26 cu ft (2 seater),  
1/carton 39 cu ft (3 seater)

### Options

- Wood or polyurethane arms available in flat (WF or PF) or rounded (WR or PR) profile
- Round polyurethane arms available in Black, Sterling Grey and Taupe (RAL 7006)
- Flat polyurethane arms available in Black only
- KYDEX® flat arms available in Black (B) or Taupe RAL 7006 (T) or Sterling Grey (G)
- Connected and freestanding tables
- Antibacterial and antimicrobial fabrics available
- Different fabric on seat and back for no extra charge
- CAL 133

Contact Spec Customer Service to railroad fabrics (specify repeat info and yardage requirement will be provided) and for repeats greater than 5" x 5"



### Two Seater with outside arms

COM 3.5 yds

0.75 yd COM per single seat

1.0 yd COM per single back

MODEL	COM	GR 1	GR 2	GR 3	GR 4	GR 5	GR 6
6202M	1988	2217	2295	2447	2676	2852	3081

Dimensions (inches)

seat H	18.0	seat W	21.0	arm H	25.0
total H	33.75	total W	46.5	depth	25.0

**For KYDEX® flat arms add suffix K and \$374**

Meets BIFMA Seating Durability Test to 750 lbs per two seater

CAL 133, add \$302 List per two seater



6202M

### Three Seater with outside arms

COM 5.25 yds

0.75 yd COM per single seat

1.0 yd COM per single back

MODEL	COM	GR 1	GR 2	GR 3	GR 4	GR 5	GR 6
6203M	2600	2946	3059	3291	3629	3892	4240

Dimensions (inches)

seat H	18.0	seat W	21.0	arm H	25.0
total H	33.75	total W	67.5	depth	25.0

**For KYDEX® flat arms add suffix K and \$374**

Meets BIFMA Seating Durability Test to 1000 lbs per three seater

CAL 133, add \$453 List per three seater



6203M



Pricing May 2023  
Discount 57.7% from List prices

spec™

MAS SIN 33721

## COOPER COLLECTION - BALA Lounge Seating

Designed for today's healthcare facilities

Two and Three Seaters with half arms

### Standard Features

- Separate seat and back
- Wood components in Beech, in any of 9 standard stains or stain-to-match for no extra charge
- Threaded replaceable glides
- Use in connected layouts for no extra charge
- Velcro removable back covers
- Replaceable seats
- Arms replaceable in the field
- Ships assembled
- Ships 1/carton 26 cu ft (2 seater),  
1/carton 39 cu ft (3 seater)

### Options

- Wood or polyurethane arms available in flat (WF or PF) or rounded (WR or PR) profile
- Round polyurethane arms available in Black, Sterling Grey and Taupe (RAL 7006)
- Flat polyurethane arms available in Black only
- KYDEX® flat arms available in Black (B) or Taupe RAL 7006 (T) or Sterling Grey (G)
- Connected and freestanding tables
- Antibacterial and antimicrobial fabrics available
- Different fabric on seat and back for no extra charge
- CAL 133

Contact Spec Customer Service to railroad fabrics (specify repeat info and yardage requirement will be provided) and for repeats greater than 5" x 5"



### Two Seater with half arms

COM 3.5 yds

0.75 yd COM per single seat

1.0 yd COM per single back

MODEL	COM	GR 1	GR 2	GR 3	GR 4	GR 5	GR 6
<b>6212M</b>	<b>2550</b>	<b>2780</b>	<b>2860</b>	<b>3013</b>	<b>3241</b>	<b>3413</b>	<b>3647</b>

Dimensions (inches)

seat H	18.0	seat W	21.0	arm H	25.0
total H	33.75	total W	48.0	depth	25.0

**For KYDEX® flat arms add suffix K and \$561**

Meets BIFMA Seating Durability Test to 750 lbs per two seater

CAL 133, add \$302 List per two seater



6212M

### Three Seater with half arms

COM 5.25 yds

0.75 yd COM per single seat

1.0 yd COM per single back

MODEL	COM	GR 1	GR 2	GR 3	GR 4	GR 5	GR 6
<b>6213M</b>	<b>3726</b>	<b>4072</b>	<b>4186</b>	<b>4415</b>	<b>4757</b>	<b>5019</b>	<b>5364</b>

Dimensions (inches)

seat H	18.0	seat W	21.0	arm H	25.0
total H	33.75	total W	70.5	depth	25.0

**For KYDEX® flat arms add suffix K and \$748**

Meets BIFMA Seating Durability Test to 1000 lbs per three seater

CAL 133, add \$453 List per three seater



6213M



Pricing May 2023  
Discount 57.7% from List prices

spec™

MAS SIN 33721

## COOPER COLLECTION - BALA Lounge Seating

Designed for today's healthcare facilities

Two and Three Seaters with full arms

### Standard Features

- Separate seat and back
- Wood components in Beech, in any of 9 standard stains or stain-to-match for no extra charge
- Threaded replaceable glides
- Use in connected layouts for no extra charge
- Velcro removable back covers
- Replaceable seats
- Arms replaceable in the field
- Ships assembled
- Ships 1/carton 26 cu ft (2 seater),  
1/carton 39 cu ft (3 seater)

### Options

- Wood or polyurethane arms available in flat (WF or PF) or rounded (WR or PR) profile
- Round polyurethane arms available in Black, Sterling Grey and Taupe (RAL 7006)
- Flat polyurethane arms available in Black only
- KYDEX® flat arms available in Black (B) or Taupe RAL 7006 (T) or Sterling Grey (G)
- Connected and freestanding tables
- Antibacterial and antimicrobial fabrics available
- Different fabric on seat and back for no extra charge
- CAL 133

Contact Spec Customer Service to railroad fabrics (specify repeat info and yardage requirement will be provided) and for repeats greater than 5" x 5"



### Two Seater with full arms

COM 3.5 yds

0.75 yd COM per single seat

1.0 yd COM per single back

MODEL	COM	GR 1	GR 2	GR 3	GR 4	GR 5	GR 6
<b>6222M</b>	<b>2550</b>	<b>2780</b>	<b>2860</b>	<b>3013</b>	<b>3241</b>	<b>3413</b>	<b>3647</b>

Dimensions (inches)

seat H	18.0	seat W	21.0	arm H	25.0
total H	33.75	total W	48.0	depth	25.0

**For KYDEX® flat arms add suffix K and \$561**

Meets BIFMA Seating Durability Test to 750 lbs per two seater

CAL 133, add \$302 List per two seater



6222M

### Three Seater with full arms

COM 5.25 yds

0.75 yd COM per single seat

1.0 yd COM per single back

MODEL	COM	GR 1	GR 2	GR 3	GR 4	GR 5	GR 6
<b>6223M</b>	<b>3726</b>	<b>4072</b>	<b>4186</b>	<b>4415</b>	<b>4757</b>	<b>5019</b>	<b>5364</b>

Dimensions (inches)

seat H	18.0	seat W	21.0	arm H	25.0
total H	33.75	total W	70.5	depth	25.0

**For KYDEX® flat arms add suffix K and \$748**

Meets BIFMA Seating Durability Test to 1000 lbs per three seater

CAL 133, add \$453 List per three seater



6223M



Pricing May 2023  
Discount 57.7% from List prices

**spec**

MAS SIN 33721

## COOPER COLLECTION - BALA Lounge Seating

Designed for today's healthcare facilities

Loveseat with arms

### Standard Features

- Separate seat and back
- Wood components in Beech, in any of 9 standard stains or stain-to-match for no extra charge
- Threaded replaceable glides
- Use in connected layouts for no extra charge
- Velcro removable back covers
- Replaceable seats
- Arms replaceable in the field
- Ships assembled
- Ships 1/carton 20 cu ft

Contact Spec Customer Service to railroad fabrics (specify repeat info and yardage requirement will be provided) and for repeats greater than 5" x 5"

### Options

- Wood or polyurethane arms available in flat (WF or PF) or rounded (WR or PR) profile
- Round polyurethane arms available in Black, Sterling Grey and Taupe (RAL 7006)
- Flat polyurethane arms available in Black only
- KYDEX® flat arms available in Black (B) or Taupe RAL 7006 (T) or Sterling Grey (G)
- Connected and freestanding tables
- Antibacterial and antimicrobial fabrics available
- Different fabric on seat and back for no extra charge
- CAL 133



### Loveseat with arms

COM 3.5 yds

1.75 yd COM per single seat

1.75 yd COM per single back

MODEL	COM	GR 1	GR 2	GR 3	GR 4	GR 5	GR 6
<b>6201L</b>	<b>2155</b>	<b>2419</b>	<b>2508</b>	<b>2689</b>	<b>2954</b>	<b>3159</b>	<b>3428</b>

Dimensions (inches)

seat H	18.0	seat W	42.0	arm H	25.0
total H	33.75	total W	44.75	depth	25.0

**For KYDEX® flat arms add suffix K and \$374**

Meets BIFMA Seating Durability Test to 750 lbs per chair

CAL 133, add \$233 List per chair



6201L



Pricing May 2023  
Discount 57.7% from List prices

spec™

MAS SIN 33721

## COOPER COLLECTION - BALA Lounge Seating

Designed for today's healthcare facilities

Bariatric Single Seater with arms

### Standard Features

- Separate seat and back
- Wood components in Beech, in any of 9 standard stains or stain-to-match for no extra charge
- Threaded replaceable glides
- Use in connected layouts for no extra charge
- Velcro removable back covers
- Replaceable seats
- Arms replaceable in the field
- Ships assembled
- Ships 1/carton 20 cu ft

Contact Spec Customer Service to railroad fabrics (specify repeat info and yardage requirement will be provided) and for repeats greater than 5" x 5"

### Options

- Wood or polyurethane arms available in flat (WF or PF) or rounded (WR or PR) profile
- Round polyurethane arms available in Black, Sterling Grey and Taupe (RAL 7006)
- Flat polyurethane arms available in Black only
- KYDEX® flat arms available in Black (B) or Taupe RAL 7006 (T) or Sterling Grey (G)
- Connected and freestanding tables
- Antibacterial and antimicrobial fabrics available
- Different fabric on seat and back for no extra charge
- CAL 133



### Bariatric Single Seater with arms

COM 3.0 yds

1.5 yd COM per single seat

1.5 yd COM per single back

MODEL	COM	GR 1	GR 2	GR 3	GR 4	GR 5	GR 6
<b>6201G</b>	<b>1643</b>	<b>1872</b>	<b>1948</b>	<b>2100</b>	<b>2330</b>	<b>2503</b>	<b>2730</b>

Dimensions (inches)

seat H	18.0	seat W	30.0	arm H	25.0
total H	33.75	total W	34.25	depth	25.0

**For KYDEX® flat arms add suffix K and \$374**

Meets BIFMA Seating Durability Test to 750 lbs per chair

CAL 133, add \$190 List per chair



6201G



Pricing May 2023  
Discount 57.7% from List prices

**spec**

MAS SIN 33721

## COOPER COLLECTION - BALA Lounge Seating

Designed for today's healthcare facilities  
Highback Single Seater with arms – Ottoman

### Standard Features

- Separate seat and back
- Wood components in Beech, in any of 9 standard stains or stain-to-match for no extra charge
- Threaded replaceable glides
- Use in connected layouts for no extra charge
- Velcro removable back covers
- Replaceable seats
- Arms replaceable in the field
- Ships assembled
- Ships 1/carton 19 cu ft
- Ottoman ships 1/carton 5 cu ft

Contact Spec Customer Service to railroad fabrics (specify repeat info and yardage requirement will be provided) and for repeats greater than 5" x 5"

### Options

- Wood or polyurethane arms available in flat (WF or PF) or rounded (WR or PR) profile
- Round polyurethane arms available in Black, Sterling Grey and Taupe (RAL 7006)
- Flat polyurethane arms available in Black only
- KYDEX® flat arms available in Black (B) or Taupe RAL 7006 (T) or Sterling Grey (G)
- Vinyl insert on top of the back, add \$53 List/seat back
- Connected and freestanding tables
- Antibacterial and antimicrobial fabrics available
- Different fabric on seat and back for no extra charge
- CAL 133



### Highback Single Seater with arms

COM 2.5 yds  
0.75 yd COM per single seat  
1.75 yds COM per single back

MODEL	COM	GR 1	GR 2	GR 3	GR 4	GR 5	GR 6
<b>6201H</b>	<b>1476</b>	<b>1656</b>	<b>1716</b>	<b>1838</b>	<b>2015</b>	<b>2155</b>	<b>2381</b>

Dimensions (inches)

seat H	18.0	seat W	21.0	arm H	25.0
total H	47.5	total W	25.25	depth	25.0

**For KYDEX® flat arms add suffix K and \$374**

Meets BIFMA Seating Durability Test to 500 lbs per chair  
CAL 133, add \$171 List per chair



6201H

### Ottoman

0.5 yd COM per ottoman

MODEL	COM	GR 1	GR 2	GR 3	GR 4	GR 5	GR 6
<b>6230F</b>	<b>626</b>	<b>669</b>	<b>686</b>	<b>713</b>	<b>761</b>	<b>794</b>	<b>856</b>

Ottoman Dimensions (inches)

H	11.5	W	19.25	depth	12.25
---	------	---	-------	-------	-------

CAL 133, add \$70 List



6230F



Pricing May 2023  
Discount 57.7% from List prices



MAS SIN 33721

## COOPER COLLECTION - BALA Lounge Seating

Designed for today's healthcare facilities  
Half and Full Panel Arms

### Options

To order half panel arms, add Z to model number,  
e.g. 6201**Z**

- Antibacterial and antimicrobial fabrics available
- CAL 133

To order full panel arms, add ZC to model number,  
e.g. 6201**ZC**

*Pricing is for one half panel arm, e.g. for a single  
seater chair with half panel arms, add two half panel  
arms to cost of chair*

*Contact Spec Customer Service to railroad fabrics  
(specify repeat info and yardage requirement will  
be provided) and for repeats greater than 5" x 5"*



### Half and Full Panel Arms

COM 0.5 yds per half panel arm

MODEL	COM	GR 1	GR 2	GR 3	GR 4	GR 5	GR 6
<b>Z</b>	<b>98</b>	<b>130</b>	<b>136</b>	<b>157</b>	<b>189</b>	<b>210</b>	<b>245</b>

COM 0.75 yds per full panel arm

MODEL	COM	GR 1	GR 2	GR 3	GR 4	GR 5	GR 6
<b>ZC</b>	<b>187</b>	<b>243</b>	<b>262</b>	<b>300</b>	<b>359</b>	<b>403</b>	<b>441</b>

CAL 133, add \$54 List per half panel arm / \$102 List per full panel arm





Pricing May 2023  
Discount 57.7% from List prices

**spec**

MAS SIN 33721

## COOPER COLLECTION - BALA Lounge Seating

Designed for today's healthcare facilities

Easy Access Hip Single Seater with arms

### Standard Features

- Separate seat and back
- Wood components in Beech, in any of 9 standard stains or stain-to-match for no extra charge
- Threaded replaceable glides
- 24" seat height, no seat pitch (level)
- Footrest which assists entering/exiting chair
- Velcro replaceable back covers
- Replaceable seats
- Arms replaceable in the field
- Ships assembled
- Ships 1/carton 19 cu ft

### Options

- Wood or polyurethane arms available in flat (WF or PF) or rounded (WR or PR) profile
- Round polyurethane arms available in Black, Sterling Grey and Taupe (RAL 7006)
- Flat polyurethane arms available in Black only
- KYDEX® flat arms available in Black (B) or Taupe RAL 7006 (T) or Sterling Grey (G)
- Antibacterial and antimicrobial fabrics available
- Different fabric on seat and back for no extra charge
- CAL 133

Contact Spec Customer Service to railroad fabrics (specify repeat info and yardage requirement will be provided) and for repeats greater than 5" x 5"



### Easy Access Hip Single Seater with arms

COM 1.75 yds

0.75 yd COM per single seat

1.0 yd COM per single back

MODEL	COM	GR 1	GR 2	GR 3	GR 4	GR 5	GR 6
<b>6201ME</b>	<b>1664</b>	<b>1779</b>	<b>1817</b>	<b>1892</b>	<b>2008</b>	<b>2094</b>	<b>2211</b>

Dimensions (inches)

seat H	24.0	seat W	21.0	arm H	32.0
total H	46.0	total W	25.25	depth	25.0

**For KYDEX® flat arms add suffix K and \$374**

Meets BIFMA Seating Durability Test to 500 lbs per chair

CAL 133, add \$151 List per chair



6201ME



Pricing May 2023  
Discount 57.7% from List prices

spec

MAS SIN 33721

## COOPER COLLECTION - BALA Lounge Seating

Designed for today's healthcare facilities

Single and Two Seater Benches

### Standard Features

- Wood components in Beech, in any of 9 standard stains or stain-to-match for no extra charge
- Threaded replaceable glides
- Use in connected layouts for no extra charge
- Replaceable seats
- Arms replaceable in the field
- Ships assembled
- Ships 1/carton 9 cu ft (single seater), 14 cu ft (2 seater), 21 cu ft (3 seater)

### Options

- Antibacterial and antimicrobial fabrics available
- CAL 133

Contact Spec Customer Service to railroad fabrics (specify repeat info and yardage requirement will be provided) and for repeats greater than 5" x 5"

### Single Seater Bench

COM 1.0 yds

1.0 yd COM per single seat

MODEL	COM	GR 1	GR 2	GR 3	GR 4	GR 5	GR 6
<b>6201B</b>	<b>1083</b>	<b>1155</b>	<b>1182</b>	<b>1229</b>	<b>1308</b>	<b>1364</b>	<b>1469</b>

No arms

<b>6201B</b>	<b>1385</b>	<b>1459</b>	<b>1485</b>	<b>1535</b>	<b>1608</b>	<b>1669</b>	<b>1779</b>
End arms (WF/WR or PF/PR)							

Dimensions (inches)

seat H	18.0	seat W	21.0	arm H	24.0	depth	26.25
total H	N/A	total W	24.25	total W	25.25		
		w/o arms		w/end arms			

Meets BIFMA Seating Durability Test to 500 lbs per bench  
CAL 133, add \$70 List per bench



6201B

### Two Seater Bench

COM 2.0 yds

1.0 yd COM per single seat

MODEL	COM	GR 1	GR 2	GR 3	GR 4	GR 5	GR 6
<b>6202B</b>	<b>1408</b>	<b>1558</b>	<b>1605</b>	<b>1707</b>	<b>1857</b>	<b>1970</b>	<b>2164</b>

No arms

<b>6202B</b>	<b>1712</b>	<b>1860</b>	<b>1912</b>	<b>2010</b>	<b>2161</b>	<b>2274</b>	<b>2474</b>
End arms (WF/WR or PF/PR)							

<b>6212B</b>	<b>2147</b>	<b>2299</b>	<b>2349</b>	<b>2448</b>	<b>2598</b>	<b>2712</b>	<b>2922</b>
--------------	-------------	-------------	-------------	-------------	-------------	-------------	-------------

Arms between and at ends (WF/WR or PF/PR)

Dimensions (inches)

seat H	18.0	seat W	21.0	arm H	24.0	depth	26.25
total H	N/A	total W	45.25	total W	46.25	total W	47.75
		w/o arms		w/end arms		w/arms between and at ends	

Meets BIFMA Seating Durability Test to 750 lbs per two seat bench  
CAL 133, add \$140 List per two seat bench



6202B



Pricing May 2023  
Discount 57.7% from List prices



MAS SIN 33721

## COOPER COLLECTION - BALA Lounge Seating

Designed for today's healthcare facilities  
Three Seater Bench

### Standard Features

- Wood components in Beech, in any of 9 standard stains or stain-to-match for no extra charge
- Use in connected layouts for no extra charge
- Threaded replaceable glides
- Replaceable seats
- Arms replaceable in the field
- Ships assembled
- Ships 1/carton 9 cu ft (single seater), 14 cu ft (2 seater), 21 cu ft (3 seater)

### Options

- Antibacterial and antimicrobial fabrics available
- CAL 133

Contact Spec Customer Service to railroad fabrics (specify repeat info and yardage requirement will be provided) and for repeats greater than 5" x 5"



### Three Seater Bench

COM 3.0 yds  
1.0 yd COM per single seat

MODEL	COM	GR 1	GR 2	GR 3	GR 4	GR 5	GR 6
<b>6203B</b>	<b>1814</b>	<b>2039</b>	<b>2115</b>	<b>2264</b>	<b>2489</b>	<b>2660</b>	<b>2946</b>

No arms

<b>6203B</b>	<b>2115</b>	<b>2338</b>	<b>2414</b>	<b>2566</b>	<b>2791</b>	<b>2959</b>	<b>3251</b>
--------------	-------------	-------------	-------------	-------------	-------------	-------------	-------------

End arms (WF/WR or PF/PR)

<b>6213B</b>	<b>3068</b>	<b>3295</b>	<b>3369</b>	<b>3519</b>	<b>3743</b>	<b>3916</b>	<b>4225</b>
--------------	-------------	-------------	-------------	-------------	-------------	-------------	-------------

Arms between and at ends (WF/WR or PF/PR)

#### Dimensions (inches)

seat H	18.0	seat W	21.0	arm H	24.0	depth	26.25
total H	N/A	total W	66.25	total W	67.25	total W	70.50
		w/o arms		w/end arms		w/arms between and at ends	

Meets BIFMA Seating Durability Test to 1000 lbs per three seat bench  
CAL 133, add \$210 List per three seat bench



6203B





Pricing May 2023  
Discount 57.7% from List prices

spec™

MAS SIN 33721

## COOPER COLLECTION - BALA Lounge Seating

Designed for today's healthcare facilities

Bariatric Single and Two Seater Benches

### Standard Features

- Wood components in Beech, in any of 9 standard stains or stain-to-match for no extra charge
- Bariatric seating cannot connect to bariatric seating
- Threaded replaceable glides
- Use in connected layouts for no extra charge
- Replaceable seats
- Arms replaceable in the field
- Ships assembled
- Ships 1/carton 15 cu ft (single seater), 20 cu ft (2 seater)

### Options

- Wood or polyurethane arms, in flat (WF or PF) or rounded (WR or PR) profile, 6" in height, at ends of bench and between seats
- Round polyurethane arms available in Black, Sterling Grey and Taupe (RAL 7006)
- Flat polyurethane arms available in Black only
- KYDEX® flat arms available in Black (B) or Taupe RAL 7006 (T) or Sterling Grey (G)
- Antibacterial and antimicrobial fabrics available
- CAL 133

Contact Spec Customer Service to railroad fabrics (specify repeat info and yardage requirement will be provided) and for repeats greater than 5" x 5"



### Bariatric Single Seater Bench

COM 1.5 yds

1.5 yd COM per single seat

MODEL	COM	GR 1	GR 2	GR 3	GR 4	GR 5	GR 6
<b>6201BG</b>	<b>1594</b>	<b>1679</b>	<b>1709</b>	<b>1766</b>	<b>1852</b>	<b>1918</b>	<b>2044</b>

End arms (WF/WR or PF/PR)

Dimensions (inches)

seat H	18.0	seat W	30.0	arm H	24.0	depth	26.25
total H	24.0	total W	34.25				

**For KYDEX® flat arms add suffix K and \$374**

Meets BIFMA Seating Durability Test to 750 lbs per bench

CAL 133, add \$97 List per bench



6201BG

### Bariatric Two Seater Bench

COM 3.0 yds

1.5 yd COM per single seat

MODEL	COM	GR 1	GR 2	GR 3	GR 4	GR 5	GR 6
<b>6222BG</b>	<b>2473</b>	<b>2643</b>	<b>2701</b>	<b>2817</b>	<b>2988</b>	<b>3120</b>	<b>3363</b>

Arms between and at ends (WF/WR or PF/PR)

Dimensions (inches)

seat H	18.0	seat W	30.0	arm H	24.0	depth	26.25
total H	24.0	total W	66.0				

**For KYDEX® flat arms add suffix K and \$561**

Meets BIFMA Seating Durability Test to 1000 lbs per two seat bench

CAL 133, add \$194 List per two seat bench



6222BG



Pricing May 2023  
Discount 57.7% from List prices

spec™

MAS SIN 33721

## COOPER COLLECTION - BALA Lounge Seating

Designed for today's healthcare facilities

Freestanding Lounge Tables – Corner and Spacer Connecting Tables

### Standard Features

- Tops in laminate or veneer
- Select laminate tops from 15 standard laminates or choose any standard Wilsonart, Nevamar, Formica, Arborite and Pionite matte finish laminates for no extra charge
- Freestanding lounge tables available with PVC Flat (PVF), 2mm (2MM), exposed Baltic Birch plywood (PF, PKNR) or hardwood (HB) edge
- Connecting table tops available with PVC Flat (PVF) edge, Self edge (SE) or hardwood (HB) edge
- 9 standard veneer and hardwood edge stains. Stain-to-match available for no extra charge.
- Beech legs and Beech table skirts stained the same
- Tops utilize NU Green earth friendly core
- Threaded replaceable glides
- 18" height

### Options

- Non-standard laminates, contact Spec for pricing
- Custom size spacer tables for restricted spaces
- Other sizes may be available

*Radius Corner Tables are recommended for open areas*

### Freestanding Lounge Tables

Model	Laminate PVF/SE/2MM	Laminate PF/PKNR/HB	Veneer HB	Cu.Ft.
62 - 24 x 24 SQ	<b>1030</b>	<b>1278</b>	<b>1473</b>	7.2
62 - 24 x 48 RE	<b>1234</b>	<b>1507</b>	<b>1781</b>	18
62 - 30 x 30 SQ	<b>1165</b>	<b>1345</b>	<b>1555</b>	13.5
62 - 22 DIA	<b>1226</b>	<b>1683</b>	<b>1943</b>	7.2



### Corner and Spacer Connecting Tables

Model	Laminate PVF/SE	Laminate HB Edge	Veneer HB Edge	Cu.Ft.
62RC - 28 x 28 <i>Radius Corner Table</i>	<b>1054</b>	<b>1414</b>	<b>1658</b>	2
62SC - 28 x 28 <i>Square Corner Table</i>	<b>1151</b>	<b>1399</b>	<b>1543</b>	2
62TC - 45 degree <i>Corner Table</i>	<b>1054</b>	<b>1414</b>	<b>1658</b>	2
62ST - 21 x 24 <i>Spacer Table</i>	<b>715</b>	<b>1010</b>	<b>1157</b>	2
62ET - 21 x 24 <i>End Table</i>	<b>956</b>	<b>1250</b>	<b>1398</b>	2

