

COOPER COLLECTION - BALA Lounge Seating

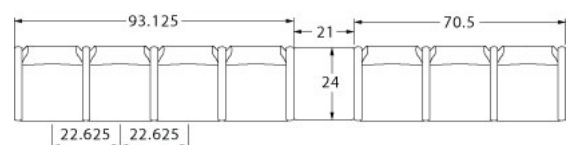
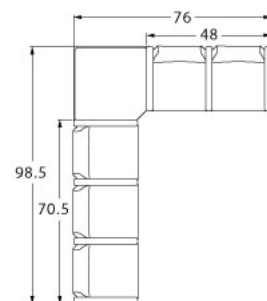
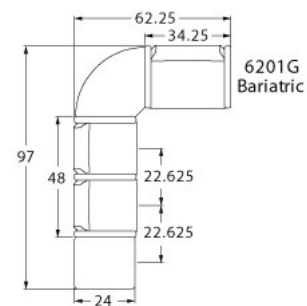
LAYOUTS



Description

- Spec's Bala offers the softer look and feel of wood, without sacrificing high durability.
- Your layout possibilities are unlimited with spacer, radius and corner tables – for both standard and bariatric seating in virtually any combination.
- Bariatric seating is a 30" wide seat and is load tested to 750 lbs. Cannot be connected to other bariatric seats.
- 21" seat width is standard.
- Standard in maple in any of 9 standard stains or stain-to-match for no extra charge.
- Choice of wood or polyurethane arms which are replaceable in the field.
- All models offer a choice of no center arms, half arms or full arms to the floor.
- Glides and separate seat and back are standard.
- Please send a drawing of the configuration you require with your order.
- For fabrics you wish railroaded or repeats larger than 5" x 5", please contact the factory with repeat information and yardage requirement will be provided.

LAYOUTS AND DIMENSIONS



COOPER COLLECTION - BALA Lounge Seating



PRODUCT CODE

6223M - WF

Collection

6 : Cooper

Series

2 : Bala

Center Arm

0 : Outside Arms

1 : Half Arms

2 : Full Arms

Number of Seats

1 : Single Seater

2 : Two Seater

3 : Three Seater

Chair Type

M : Mid Back

H : Highback

G : Bariatric

ME : Hip Chair

B : Bench

BG : Bariatric Bench

L : Loveseat

Arm Type and Profile

WF : Wood Flat

WR : Wood Round

PF : Poly Flat

PR : Poly Round

K: KYDEX® Flat Profile

OPTIONS

ARM TYPE



Polyurethane



Wood



KYDEX®

PANEL ARMS



Half Panel Arm



Full Panel Arm

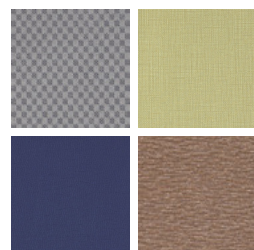
FINISHES

FRAME



Select from one of our 9 standard wood stains or stain-to-match for no extra charge

FABRIC



Select fabrics from one of our textile partners

ARMS



Black

Sterling Grey

Taupe

Note: flat polyurethane arm available in Black only.

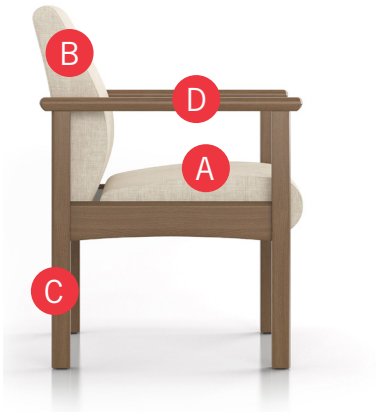
Select from one of our 9 standard wood stains or stain-to-match for no extra charge

See Spectone Card or specfurniture.com/tools-and-resources/product-resources/finishes for a complete list of finish options and colors.



COOPER COLLECTION - BALA Lounge Seating

HOW TO ORDER



Specify Model

- A Specify Fabric - Seat¹
Manufacturer, Pattern Name, Color
- B Specify Fabric - Back¹
Manufacturer, Pattern Name, Color
- C Specify Frame Finish
- D Specify Arm Type, Profile and Color
Polyurethane (Flat or Round) / Wood (Flat or Round) / KYDEX[®] (\$) (Flat)

Optional: KYDEX[®] Arm, CAL 133, Moisture Barrier, Half or Full Panel Arms, Connecting and Freestanding Tables, Benches, Ottoman, Vinyl Headrest Insert

¹ When multiple fabrics are specified on two and three seat chairs, please provide a drawing and legend for fabric placement.



Model	Fabric - Seat	Fabric - Back	Frame Finish	Arm Type, Profile and Color
6201M	Momentum, Beeline, Canvas	Momentum, Beeline, Canvas	Studio Teak Stain	Wood, Flat, Studio Teak Stain

COOPER COLLECTION - BALA Lounge Seating

Designed for today's healthcare facilities

Single Seater with arms

Standard Features

- Separate seat and back
- Meets seating durability test to 500 lbs per chair
- Wood components in maple, in any of 9 standard stains or stain-to-match for no extra charge
- Threaded replaceable glides
- Use in connected layouts for no extra charge
- Velcro removable back covers
- Replaceable seats
- Arms replaceable in the field
- Ships assembled
- Ships 1/carton 15 cu ft

Options

- Wood or polyurethane arms available in flat (WF or PF) or rounded (WR or PR) profile
- Round polyurethane arms available in Black, Sterling Grey and Taupe (RAL 7006)
- Flat polyurethane arms available in Black only
- KYDEX® flat arms available in Black (B) or Taupe RAL 7006 (T) or Sterling Grey (G)
- Connected and freestanding tables
- Antibacterial and antimicrobial fabrics available
- Different fabric on seat and back for no extra charge
- CAL 133

Contact Spec Customer Service to railroad fabrics (specify repeat info and yardage requirement will be provided) and for repeats greater than 5" x 5"



Single Seater with arms

COM 1.75 yds

0.75 yd COM per single seat

1.0 yd COM per single back

MODEL	COM	GR 1	GR 2	GR 3	GR 4	GR 5	GR 6
6201M	1381	1496	1534	1608	1724	1811	1926

Dimensions (inches)

seat H	18.0	seat W	21.0	arm H	25.0
total H	33.75	total W	25.25	depth	25.0

For KYDEX® flat arms add suffix K and \$374

CAL 133, add \$151 List per chair



6201M

COOPER COLLECTION - BALA Lounge Seating

Designed for today's healthcare facilities

Two and Three Seaters with outside arms

Standard Features

- Separate seat and back
- Meets seating durability test to 750 lbs per two seater, and to 1000 lbs per three seater
- Wood components in maple, in any of 9 standard stains or stain-to-match for no extra charge
- Threaded replaceable glides
- Use in connected layouts for no extra charge
- Velcro removable back covers
- Replaceable seats
- Arms replaceable in the field
- Ships assembled
- Ships 1/carton 26 cu ft (2 seater), 1/carton 39 cu ft (3 seater)

Options

- Wood or polyurethane arms available in flat (WF or PF) or rounded (WR or PR) profile
- Round polyurethane arms available in Black, Sterling Grey and Taupe (RAL 7006)
- Flat polyurethane arms available in Black only
- KYDEX® flat arms available in Black (B) or Taupe RAL 7006 (T) or Sterling Grey (G)
- Connected and freestanding tables
- Antibacterial and antimicrobial fabrics available
- Different fabric on seat and back for no extra charge
- CAL 133

Contact Spec Customer Service to railroad fabrics (specify repeat info and yardage requirement will be provided) and for repeats greater than 5" x 5"



Two Seater with outside arms

COM 3.5 yds

0.75 yd COM per single seat

1.0 yd COM per single back

MODEL	COM	GR 1	GR 2	GR 3	GR 4	GR 5	GR 6
6202M	1988	2217	2295	2447	2676	2852	3081

Dimensions (inches)

seat H	18.0	seat W	21.0	arm H	25.0
total H	33.75	total W	46.5	depth	25.0

For KYDEX® flat arms add suffix K and \$374

CAL 133, add \$302 List per two seater



6202M

Three Seater with outside arms

COM 5.25 yds

0.75 yd COM per single seat

1.0 yd COM per single back

MODEL	COM	GR 1	GR 2	GR 3	GR 4	GR 5	GR 6
6203M	2600	2946	3059	3291	3629	3892	4240

Dimensions (inches)

seat H	18.0	seat W	21.0	arm H	25.0
total H	33.75	total W	67.5	depth	25.0

For KYDEX® flat arms add suffix K and \$374

CAL 133, add \$453 List per three seater



6203M

COOPER COLLECTION - BALA Lounge Seating

Designed for today's healthcare facilities

Two and Three Seaters with half arms

Standard Features

- Separate seat and back
- Meets seating durability test to 750 lbs per two seater, and to 1000 lbs per three seater
- Wood components in maple, in any of 9 standard stains or stain-to-match for no extra charge
- Threaded replaceable glides
- Use in connected layouts for no extra charge
- Velcro removable back covers
- Replaceable seats
- Arms replaceable in the field
- Ships assembled
- Ships 1/carton 26 cu ft (2 seater), 1/carton 39 cu ft (3 seater)

Options

- Wood or polyurethane arms available in flat (WF or PF) or rounded (WR or PR) profile
- Round polyurethane arms available in Black, Sterling Grey and Taupe (RAL 7006)
- Flat polyurethane arms available in Black only
- KYDEX® flat arms available in Black (B) or Taupe RAL 7006 (T) or Sterling Grey (G)
- Connected and freestanding tables
- Antibacterial and antimicrobial fabrics available
- Different fabric on seat and back for no extra charge
- CAL 133

Contact Spec Customer Service to railroad fabrics (specify repeat info and yardage requirement will be provided) and for repeats greater than 5" x 5"



Two Seater with half arms

COM 3.5 yds

0.75 yd COM per single seat

1.0 yd COM per single back

MODEL	COM	GR 1	GR 2	GR 3	GR 4	GR 5	GR 6
6212M	2550	2780	2860	3013	3241	3413	3647

Dimensions (inches)

seat H	18.0	seat W	21.0	arm H	25.0
total H	33.75	total W	48.0	depth	25.0

For KYDEX® flat arms add suffix K and \$561

CAL 133, add \$302 List per two seater



6212M

Three Seater with half arms

COM 5.25 yds

0.75 yd COM per single seat

1.0 yd COM per single back

MODEL	COM	GR 1	GR 2	GR 3	GR 4	GR 5	GR 6
6213M	3726	4072	4186	4415	4757	5019	5364

Dimensions (inches)

seat H	18.0	seat W	21.0	arm H	25.0
total H	33.75	total W	70.5	depth	25.0

For KYDEX® flat arms add suffix K and \$748

CAL 133, add \$453 List per three seater



6213M

COOPER COLLECTION - BALA Lounge Seating

Designed for today's healthcare facilities

Two and Three Seaters with full arms

Standard Features

- Separate seat and back
- Meets seating durability test to 750 lbs per two seater, and to 1000 lbs per three seater
- Wood components in maple, in any of 9 standard stains or stain-to-match for no extra charge
- Threaded replaceable glides
- Use in connected layouts for no extra charge
- Velcro removable back covers
- Replaceable seats
- Arms replaceable in the field
- Ships assembled
- Ships 1/carton 26 cu ft (2 seater), 1/carton 39 cu ft (3 seater)

Options

- Wood or polyurethane arms available in flat (WF or PF) or rounded (WR or PR) profile
- Round polyurethane arms available in Black, Sterling Grey and Taupe (RAL 7006)
- Flat polyurethane arms available in Black only
- KYDEX® flat arms available in Black (B) or Taupe RAL 7006 (T) or Sterling Grey (G)
- Connected and freestanding tables
- Antibacterial and antimicrobial fabrics available
- Different fabric on seat and back for no extra charge
- CAL 133

Contact Spec Customer Service to railroad fabrics (specify repeat info and yardage requirement will be provided) and for repeats greater than 5" x 5"



Two Seater with full arms

COM 3.5 yds

0.75 yd COM per single seat

1.0 yd COM per single back

MODEL	COM	GR 1	GR 2	GR 3	GR 4	GR 5	GR 6
6222M	2550	2780	2860	3013	3241	3413	3647

Dimensions (inches)

seat H	18.0	seat W	21.0	arm H	25.0
total H	33.75	total W	48.0	depth	25.0

For KYDEX® flat arms add suffix K and \$561

CAL 133, add \$302 List per two seater



6222M

Three Seater with full arms

COM 5.25 yds

0.75 yd COM per single seat

1.0 yd COM per single back

MODEL	COM	GR 1	GR 2	GR 3	GR 4	GR 5	GR 6
6223M	3726	4072	4186	4415	4757	5019	5364

Dimensions (inches)

seat H	18.0	seat W	21.0	arm H	25.0
total H	33.75	total W	70.5	depth	25.0

For KYDEX® flat arms add suffix K and \$748

CAL 133, add \$453 List per three seater



6223M

COOPER COLLECTION - BALA Lounge Seating

Designed for today's healthcare facilities

Loveseat with arms

Standard Features

- Separate seat and back
- Meets seating durability test to 750 lbs per chair
- Wood components in maple, in any of 9 standard stains or stain-to-match for no extra charge
- Threaded replaceable glides
- Use in connected layouts for no extra charge
- Velcro removable back covers
- Replaceable seats
- Arms replaceable in the field
- Ships assembled
- Ships 1/carton 20 cu ft

Options

- Wood or polyurethane arms available in flat (WF or PF) or rounded (WR or PR) profile
- Round polyurethane arms available in Black, Sterling Grey and Taupe (RAL 7006)
- Flat polyurethane arms available in Black only
- KYDEX® flat arms available in Black (B) or Taupe RAL 7006 (T) or Sterling Grey (G)
- Connected and freestanding tables
- Antibacterial and antimicrobial fabrics available
- Different fabric on seat and back for no extra charge
- CAL 133

Contact Spec Customer Service to railroad fabrics (specify repeat info and yardage requirement will be provided) and for repeats greater than 5" x 5"



Loveseat with arms

COM 3.5 yds

1.75 yd COM per single seat

1.75 yd COM per single back

MODEL	COM	GR 1	GR 2	GR 3	GR 4	GR 5	GR 6
6201L	2155	2419	2508	2689	2954	3159	3428

Dimensions (inches)

seat H	18.0	seat W	42.0	arm H	25.0
total H	33.75	total W	44.75	depth	25.0

For KYDEX® flat arms add suffix K and \$374

CAL 133, add \$233 List per chair



6201L

COOPER COLLECTION - BALA Lounge Seating

Designed for today's healthcare facilities

Bariatric Single Seater with arms

Standard Features

- Separate seat and back
- Meets seating durability test to 750 lbs per chair
- Wood components in maple, in any of 9 standard stains or stain-to-match for no extra charge
- Threaded replaceable glides
- Use in connected layouts for no extra charge
- Velcro removable back covers
- Replaceable seats
- Arms replaceable in the field
- Ships assembled
- Ships 1/carton 20 cu ft

Options

- Wood or polyurethane arms available in flat (WF or PF) or rounded (WR or PR) profile
- Round polyurethane arms available in Black, Sterling Grey and Taupe (RAL 7006)
- Flat polyurethane arms available in Black only
- KYDEX® flat arms available in Black (B) or Taupe RAL 7006 (T) or Sterling Grey (G)
- Connected and freestanding tables
- Antibacterial and antimicrobial fabrics available
- Different fabric on seat and back for no extra charge
- CAL 133

Contact Spec Customer Service to railroad fabrics (specify repeat info and yardage requirement will be provided) and for repeats greater than 5" x 5"



Bariatric Single Seater with arms

COM 3.0 yds

1.5 yd COM per single seat

1.5 yd COM per single back

MODEL	COM	GR 1	GR 2	GR 3	GR 4	GR 5	GR 6
6201G	1643	1872	1948	2100	2330	2503	2730

Dimensions (inches)

seat H	18.0	seat W	30.0	arm H	25.0
total H	33.75	total W	34.25	depth	25.0

For KYDEX® flat arms add suffix K and \$374

CAL 133, add \$190 List per chair



6201G

COOPER COLLECTION - BALA Lounge Seating

Designed for today's healthcare facilities

Highback Single Seater with arms – Ottoman

Standard Features

- Separate seat and back
- Meets seating durability test to 500 lbs per highback chair
- Wood components in maple, in any of 9 standard stains or stain-to-match for no extra charge
- Threaded replaceable glides
- Use in connected layouts for no extra charge
- Velcro removable back covers
- Replaceable seats
- Arms replaceable in the field
- Ships assembled
- Ships 1/carton 19 cu ft
- Ottoman ships 1/carton 5 cu ft

Options

- Wood or polyurethane arms available in flat (WF or PF) or rounded (WR or PR) profile
- Round polyurethane arms available in Black, Sterling Grey and Taupe (RAL 7006)
- Flat polyurethane arms available in Black only
- KYDEX® flat arms available in Black (B) or Taupe RAL 7006 (T) or Sterling Grey (G)
- Vinyl insert on top of the back, add \$53 List/seat back
- Connected and freestanding tables
- Antibacterial and antimicrobial fabrics available
- Different fabric on seat and back for no extra charge
- CAL 133

Contact Spec Customer Service to railroad fabrics (specify repeat info and yardage requirement will be provided) and for repeats greater than 5" x 5"



Highback Single Seater with arms

COM 2.5 yds

0.75 yd COM per single seat

1.75 yds COM per single back

MODEL	COM	GR 1	GR 2	GR 3	GR 4	GR 5	GR 6
6201H	1476	1656	1716	1838	2015	2155	2381

Dimensions (inches)

seat H	18.0	seat W	21.0	arm H	25.0
total H	47.5	total W	25.25	depth	25.0

For KYDEX® flat arms add suffix K and \$374

CAL 133, add \$171 List per chair



6201H

Ottoman

0.5 yd COM per ottoman

MODEL	COM	GR 1	GR 2	GR 3	GR 4	GR 5	GR 6
6230F	626	669	686	713	761	794	856

Ottoman Dimensions (inches)

H	11.5	W	19.25	depth	12.25
---	------	---	-------	-------	-------

CAL 133, add \$70 List



6230F

COOPER COLLECTION - BALA Lounge Seating

Designed for today's healthcare facilities

Half and Full Panel Arms

Options

To order half panel arms, add Z to model number,
e.g. 6201**Z**

- Antibacterial and antimicrobial fabrics available
- CAL 133

To order full panel arms, add ZC to model number,
e.g. 6201**ZC**

Pricing is for one half panel arm, e.g. for a single seater chair with half panel arms, add two half panel arms to cost of chair

Contact Spec Customer Service to railroad fabrics (specify repeat info and yardage requirement will be provided) and for repeats greater than 5" x 5"



Half and Full Panel Arms

COM 0.5 yds per half panel arm

MODEL	COM	GR 1	GR 2	GR 3	GR 4	GR 5	GR 6
Z	98	130	136	157	189	210	245

COM 0.75 yds per full panel arm

MODEL	COM	GR 1	GR 2	GR 3	GR 4	GR 5	GR 6
ZC	187	243	262	300	359	403	441

CAL 133, add \$54 List per half panel arm / \$102 List per full panel arm



COOPER COLLECTION - BALA Lounge Seating

Designed for today's healthcare facilities

Easy Access Hip Single Seater with arms

Standard Features

- Separate seat and back
- Meets seating durability test to 500 lbs per chair
- Wood components in maple, in any of 9 standard stains or stain-to-match for no extra charge
- Threaded replaceable glides
- 24" seat height, no seat pitch (level)
- Footrest which assists entering/exiting chair
- Velcro replaceable back covers
- Replaceable seats
- Arms replaceable in the field
- Ships assembled
- Ships 1/carton 19 cu ft

Options

- Wood or polyurethane arms available in flat (WF or PF) or rounded (WR or PR) profile
- Round polyurethane arms available in Black, Sterling Grey and Taupe (RAL 7006)
- Flat polyurethane arms available in Black only
- KYDEX® flat arms available in Black (B) or Taupe RAL 7006 (T) or Sterling Grey (G)
- Antibacterial and antimicrobial fabrics available
- Different fabric on seat and back for no extra charge
- CAL 133

Contact Spec Customer Service to railroad fabrics (specify repeat info and yardage requirement will be provided) and for repeats greater than 5" x 5"



Easy Access Hip Single Seater with arms

COM 1.75 yds

0.75 yd COM per single seat

1.0 yd COM per single back

MODEL	COM	GR 1	GR 2	GR 3	GR 4	GR 5	GR 6
6201ME	1664	1779	1817	1892	2008	2094	2211

Dimensions (inches)

seat H	24.0	seat W	21.0	arm H	32.0
total H	46.0	total W	25.25	depth	25.0

For KYDEX® flat arms add suffix K and \$374

CAL 133, add \$151 List per chair



6201ME

COOPER COLLECTION - BALA Lounge Seating

Designed for today's healthcare facilities

Single and Two Seater Benches

Standard Features

- Meets seating durability test to 500 lbs per single seat bench, and to 750 lbs per two seat bench
- Wood components in maple, in any of 9 standard stains or stain-to-match for no extra charge
- Threaded replaceable glides
- Use in connected layouts for no extra charge
- Replaceable seats
- Arms replaceable in the field
- Ships assembled
- Ships 1/carton 9 cu ft (single seater), 14 cu ft (2 seater), 21 cu ft (3 seater)

Options

- Antibacterial and antimicrobial fabrics available
- CAL 133

Contact Spec Customer Service to railroad fabrics (specify repeat info and yardage requirement will be provided) and for repeats greater than 5" x 5"

Single Seater Bench

COM 1.0 yds

1.0 yd COM per single seat

MODEL	COM	GR 1	GR 2	GR 3	GR 4	GR 5	GR 6
6201B	1083	1155	1182	1229	1308	1364	1469

No arms

6201B	1385	1459	1485	1535	1608	1669	1779
End arms (WF/WR or PF/PR)							

Dimensions (inches)

seat H	18.0	seat W	21.0	arm H	24.0	depth	26.25
total H	N/A	total W	24.25	total W	25.25		
		w/o arms		w/end arms			

CAL 133, add \$70 List per bench



6201B

Two Seater Bench

COM 2.0 yds

1.0 yd COM per single seat

MODEL	COM	GR 1	GR 2	GR 3	GR 4	GR 5	GR 6
6202B	1408	1558	1605	1707	1857	1970	2164

No arms

6202B	1712	1860	1912	2010	2161	2274	2474
End arms (WF/WR or PF/PR)							

6212B	2147	2299	2349	2448	2598	2712	2922
Arms between and at ends (WF/WR or PF/PR)							

Dimensions (inches)

seat H	18.0	seat W	21.0	arm H	24.0	depth	26.25
total H	N/A	total W	45.25	total W	46.25	total W	47.75
		w/o arms		w/end arms		w/arms between and at ends	

CAL 133, add \$140 List per two seat bench



6202B

COOPER COLLECTION - BALA Lounge Seating

Designed for today's healthcare facilities

Three Seater Bench

Standard Features

- Meets seating durability test to 1000 lbs per three seat bench
- Wood components in maple, in any of 9 standard stains or stain-to-match for no extra charge
- Use in connected layouts for no extra charge
- Threaded replaceable glides
- Replaceable seats
- Arms replaceable in the field
- Ships assembled
- Ships 1/carton 9 cu ft (single seater), 14 cu ft (2 seater), 21 cu ft (3 seater)

Options

- Antibacterial and antimicrobial fabrics available
- CAL 133

Contact Spec Customer Service to railroad fabrics (specify repeat info and yardage requirement will be provided) and for repeats greater than 5" x 5"



Three Seater Bench

COM 3.0 yds

1.0 yd COM per single seat

MODEL	COM	GR 1	GR 2	GR 3	GR 4	GR 5	GR 6
6203B	1814	2039	2115	2264	2489	2660	2946

No arms

6203B	2115	2338	2414	2566	2791	2959	3251
--------------	-------------	-------------	-------------	-------------	-------------	-------------	-------------

End arms (WF/WR or PF/PR)

6213B	3068	3295	3369	3519	3743	3916	4225
--------------	-------------	-------------	-------------	-------------	-------------	-------------	-------------

Arms between and at ends (WF/WR or PF/PR)

Dimensions (inches)

seat H	18.0	seat W	21.0	arm H	24.0	depth	26.25
total H	N/A	total W	66.25	total W	67.25	total W	70.50
		w/o arms		w/end arms		w/arms between and at ends	

CAL 133, add \$210 List per three seat bench



6203B



COOPER COLLECTION - BALA Lounge Seating

Designed for today's healthcare facilities

Bariatric Single and Two Seater Benches

Standard Features

- Meets seating durability test to 750 lbs per single seat bench, and to 1000 lbs per two seat bench
- Wood components in maple, in any of 9 standard stains or stain-to-match for no extra charge
- Bariatric seating cannot connect to bariatric seating
- Threaded replaceable glides
- Use in connected layouts for no extra charge
- Replaceable seats
- Arms replaceable in the field
- Ships assembled
- Ships 1/carton 15 cu ft (single seater), 20 cu ft (2 seater)

Options

- Wood or polyurethane arms, in flat (WF or PF) or rounded (WR or PR) profile, 6" in height, at ends of bench and between seats
- Round polyurethane arms available in Black, Sterling Grey and Taupe (RAL 7006)
- Flat polyurethane arms available in Black only
- KYDEX® flat arms available in Black (B) or Taupe RAL 7006 (T) or Sterling Grey (G)
- Antibacterial and antimicrobial fabrics available
- CAL 133

Contact Spec Customer Service to railroad fabrics (specify repeat info and yardage requirement will be provided) and for repeats greater than 5" x 5"



Bariatric Single Seater Bench

COM 1.5 yds

1.5 yd COM per single seat

MODEL	COM	GR 1	GR 2	GR 3	GR 4	GR 5	GR 6
6201BG	1594	1679	1709	1766	1852	1918	2044

End arms (WF/WR or PF/PR)

Dimensions (inches)

	seat H	18.0	seat W	30.0	arm H	24.0	depth	26.25
	total H	24.0	total W	34.25				

For KYDEX® flat arms add suffix K and \$374

CAL 133, add \$97 List per bench



6201BG

Bariatric Two Seater Bench

COM 3.0 yds

1.5 yd COM per single seat

MODEL	COM	GR 1	GR 2	GR 3	GR 4	GR 5	GR 6
6222BG	2473	2643	2701	2817	2988	3120	3363

Arms between and at ends (WF/WR or PF/PR)

Dimensions (inches)

	seat H	18.0	seat W	30.0	arm H	24.0	depth	26.25
	total H	24.0	total W	66.0				

For KYDEX® flat arms add suffix K and \$561

CAL 133, add \$194 List per two seat bench



6222BG

COOPER COLLECTION - BALA Lounge Seating

Designed for today's healthcare facilities

Freestanding Lounge Tables – Corner and Spacer Connecting Tables

Standard Features

- Tops in laminate or veneer
- Select laminate tops from 15 standard laminates or choose any standard Wilsonart, Nevamar, Formica, Arborite and Pionite matte finish laminates for no extra charge
- Freestanding lounge tables available with PVC Flat (PVF), 2mm (2MM), exposed Baltic Birch plywood (PF, PKNR) or hardwood (HB) edge
- Connecting table tops available with PVC Flat (PVF) edge, Self edge (SE) or hardwood (HB) edge
- 9 standard veneer and hardwood edge stains. Stain-to-match available for no extra charge.
- Maple legs and maple table skirts stained the same
- Tops utilize NU Green earth friendly core
- Threaded replaceable glides
- 18" height

Options

- Non-standard laminates, contact Spec for pricing
- Custom size spacer tables for restricted spaces
- Other sizes may be available

Radius Corner Tables are recommended for open areas

Freestanding Lounge Tables

Model	Laminate PVF/SE/2MM	Laminate PF/PKNR/HB	Veneer HB	Cu.Ft.
62 - 24 x 24 SQ	1030	1278	1473	7.2
62 - 24 x 48 RE	1234	1507	1781	18
62 - 30 x 30 SQ	1165	1345	1555	13.5
62 - 22 DIA	1226	1683	1943	7.2



Corner and Spacer Connecting Tables

Model	Laminate PVF/SE	Laminate HB Edge	Veneer HB Edge	Cu.Ft.
62RC - 28 x 28 <i>Radius Corner Table</i>	1054	1414	1658	2
62SC - 28 x 28 <i>Square Corner Table</i>	1151	1399	1543	2
62TC - 45 degree <i>Corner Table</i>	1054	1414	1658	2
62ST - 21 x 24 <i>Spacer Table</i>	715	1010	1157	2
62ET - 21 x 24 <i>End Table</i>	956	1250	1398	2

