



Pricing May 2023
Discount 57.7% from List prices

spec™

MAS SIN 33721

COOPER COLLECTION - DWIGHT Lounge Seating

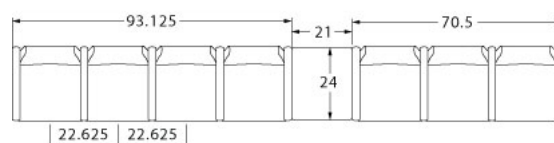
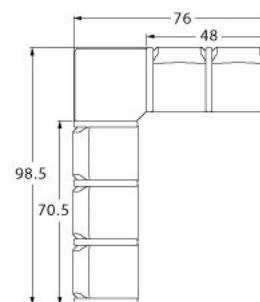
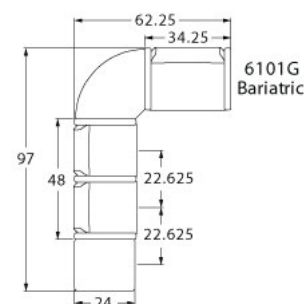
LAYOUTS



Description

- Spec's Dwight offers a steel leg frame with elements of wood giving it a softer look and feel of wood, without sacrificing high durability.
- Your layout possibilities are unlimited with spacer, radius and corner tables – for both standard and bariatric seating in virtually any combination.
- Bariatric seating is a 30" wide seat and is load tested to 750 lbs. Cannot be connected to other bariatric seats.
- 21" seat width is standard.
- Standard in European Beech in any of 9 standard stains or stain-to-match for no extra charge.
- Choice of wood or polyurethane arms in flat (WF or PF) or rounded (WR or PR) profile.
- Arms are replaceable in the field.
- All models offer a choice of no center arms, half arms or full arms to the floor.
- Glides and separate seat and back are standard.
- Please send a drawing of the configuration you require with your order.
- For fabrics you wish railroaded or repeats larger than 5" x 5", please contact the factory with repeat information and yardage requirement will be provided.

LAYOUTS AND DIMENSIONS





Pricing May 2023
Discount 57.7% from List prices

spec

MAS SIN 33721

COOPER COLLECTION - DWIGHT Lounge Seating



PRODUCT CODE

6 1 2 3 M - WR

Collection

6 : Cooper

Series

1 : Dwight

Center Arm

0 : Outside Arms

1 : Half Arms

2 : Full Arms

Number of Seats

1 : Single Seater

2 : Two Seater

3 : Three Seater

Chair Type

M : Mid Back

H : Highback

L : Loveseat

G : Bariatric

ME : Hip Chair

B : Bench

Arm Type

WF : Wood Flat Profile

WR : Wood Round Profile

PF : Poly Flat Profile

PR : Poly Round Profile

K: KYDEX® Flat Profile



OPTIONS

ARM TYPE



Polyurethane



Wood



KYDEX®

PANEL ARMS



Half Panel Arms

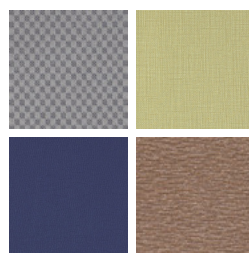
FINISHES

FRAME



Select from one of our 76 standard Spectone colors

FABRIC



Select fabrics from one of our textile partners

ARMS



Black

Sterling Grey

Taupe

Select from one of our 9 standard wood stains or stain-to-match for no extra charge

See Spectone Card or specfurniture.com/tools-and-resources/product-resources/finishes for a complete list of finish options and colors.



COOPER COLLECTION - DWIGHT Lounge Seating

MAS SIN 33721

HOW TO ORDER



Specify Model

- A** Specify Fabric - Seat¹
Manufacturer, Pattern Name, Color
- B** Specify Fabric - Back¹
Manufacturer, Pattern Name, Color
- C** Specify Frame Finish
- D** Specify Side Rail Finish
- E** Specify Arm Type, Profile and Color
Polyurethane (Flat or Round) / Wood (Flat or Round) / KYDEX® (\$) (Flat)

Optional: KYDEX® Arm, CAL 133, Moisture Barrier, Half Panel Arms, Connecting and Freestanding Tables, Benches, Ottoman, Vinyl Headrest Insert

¹ When multiple fabrics are specified on two and three seat chairs, please provide a drawing and legend for fabric placement.

Model	Fabric - Seat	Fabric - Back	Frame Finish	Side Rail Finish	Arm Type, Profile and Color
6101M	Momentum, Beeline, Canvas	Momentum, Beeline, Canvas	Silver	Studio Teak Stain	Wood, Round, Studio Teak Stain



Pricing May 2023
Discount 57.7% from List prices

spec

MAS SIN 33721

COOPER COLLECTION - DWIGHT Lounge Seating

Designed for today's healthcare facilities

Single Seater with arms

Standard Features

- Separate seat and back
- Wood components in Beech, in any of 9 standard stains or stain-to-match for no extra charge
- Fully welded frame with 1.625" steel legs
- Frame in any Spectone color
- Glides
- Velcro removable back covers
- Replaceable seats
- Arms replaceable in the field
- Use in connected layouts for no extra charge
- Ships assembled
- Ships 1/carton 15 cu ft

Options

- Wood or polyurethane arms, in flat (WF or PF) or rounded (WR or PR) profile
- Round polyurethane arms available in Black, Sterling Grey and Taupe (RAL 7006)
- Flat polyurethane arms available in Black only
- KYDEX® flat arms available in Black (B) or Taupe RAL 7006 (T) or Sterling Grey (G)
- Connected and freestanding tables
- Antibacterial and antimicrobial fabrics available
- Different fabric on seat and back for no extra charge
- CAL 133

Contact Spec Customer Service to railroad fabrics (specify repeat info and yardage requirement will be provided) and for repeats greater than 5" x 5"



Single Seater with arms

COM 1.75 yds

0.75 yd COM per single seat

1.0 yd COM per single back

MODEL	COM	GR 1	GR 2	GR 3	GR 4	GR 5	GR 6
6101M	1352	1464	1503	1580	1693	1781	1896

Dimensions (inches)

seat H	18.0	seat W	21.0	arm H	25.0
total H	33.75	total W	25.25	depth	25.0

For KYDEX® flat arms add suffix K and \$374

Meets BIFMA Seating Durability test to 500 lbs per chair

CAL 133, add \$151 List per chair



6101M



Pricing May 2023
Discount 57.7% from List prices

spec™

MAS SIN 33721

COOPER COLLECTION - DWIGHT Lounge Seating

Designed for today's healthcare facilities

Two and Three Seaters with outside arms

Standard Features

- Separate seat and back
- Wood components in Beech, in any of 9 standard stains or stain-to-match for no extra charge
- Fully welded frame with 1.625" steel legs
- Frame in any Spectone color
- Glides
- Velcro removable back covers
- Replaceable seats
- Arms removable in the field
- Use in connected layouts for no extra charge
- Ships assembled
- Ships 1/carton 26 cu ft (2 seater),
1/carton 39 cu ft (3 seater)

Options

- Wood or polyurethane arms, in flat (WF or PF) or rounded (WR or PR) profile
- Round polyurethane arms available in Black, Sterling Grey and Taupe (RAL 7006)
- Flat polyurethane arms available in Black only
- KYDEX® flat arms available in Black (B) or Taupe RAL 7006 (T) or Sterling Grey (G)
- Connected and freestanding tables
- Antibacterial and antimicrobial fabrics available
- Different fabric on seat and back for no extra charge
- CAL 133

Contact Spec Customer Service to railroad fabrics (specify repeat info and yardage requirement will be provided) and for repeats greater than 5" x 5"



Two Seater with outside arms

COM 3.5 yds

0.75 yd COM per single seat

1.0 yd COM per single back

MODEL	COM	GR 1	GR 2	GR 3	GR 4	GR 5	GR 6
6102M	1959	2189	2266	2417	2649	2824	3050

Dimensions (inches)

seat H	18.0	seat W	21.0	arm H	25.0
total H	33.75	total W	46.5	depth	25.0

For KYDEX® flat arms add suffix K and \$374

Meets BIFMA Seating Durability test to 750 lbs per two seater

CAL 133, add \$302 List per two seater



6102M

Three Seater with outside arms

COM 5.25 yds

0.75 yd COM per single seat

1.0 yd COM per single back

MODEL	COM	GR 1	GR 2	GR 3	GR 4	GR 5	GR 6
6103M	2571	2917	3030	3256	3603	3864	4208

Dimensions (inches)

seat H	18.0	seat W	21.0	arm H	25.0
total H	33.75	total W	67.5	depth	25.0

For KYDEX® flat arms add suffix K and \$374

Meets BIFMA Seating Durability test to 1000 lbs per three seater

CAL 133, add \$453 List per three seater



6103M



Pricing May 2023
Discount 57.7% from List prices

spec™

MAS SIN 33721

COOPER COLLECTION - DWIGHT Lounge Seating

Designed for today's healthcare facilities

Two and Three Seaters with half arms

Standard Features

- Separate seat and back
- Wood components in Beech, in any of 9 standard stains or stain-to-match for no extra charge
- Fully welded frame with 1.625" steel legs
- Frame in any Spectone color
- Glides
- Velcro removable back covers
- Replaceable seats
- Arms replaceable in the field
- Use in connected layouts for no extra charge
- Ships assembled
- Ships 1/carton 26 cu ft (2 seater),
1/carton 39 cu ft (3 seater)

Options

- Wood or polyurethane arms, in flat (WF or PF) or rounded (WR or PR) profile
- Round polyurethane arms available in Black, Sterling Grey and Taupe (RAL 7006)
- Flat polyurethane arms available in Black only
- KYDEX® flat arms available in Black (B) or Taupe RAL 7006 (T) or Sterling Grey (G)
- Connected and freestanding tables
- Antibacterial and antimicrobial fabrics available
- Different fabric on seat and back for no extra charge
- CAL 133

Contact Spec Customer Service to railroad fabrics (specify repeat info and yardage requirement will be provided) and for repeats greater than 5" x 5"



Two Seater with half arms

COM 3.5 yds

0.75 yd COM per single seat

1.0 yd COM per single back

MODEL	COM	GR 1	GR 2	GR 3	GR 4	GR 5	GR 6
6112M	2498	2727	2805	2958	3184	3362	3590

Dimensions (inches)

seat H	18.0	seat W	21.0	arm H	25.0
total H	33.75	total W	48.0	depth	25.0

For KYDEX® flat arms add suffix K and \$561

Meets BIFMA Seating Durability test to 750 lbs per two seater

CAL 133, add \$302 List per two seater



6112M

Three Seater with half arms

COM 5.25 yds

0.75 yd COM per single seat

1.0 yd COM per single back

MODEL	COM	GR 1	GR 2	GR 3	GR 4	GR 5	GR 6
6113M	3649	3992	4106	4334	4680	4939	5282

Dimensions (inches)

seat H	18.0	seat W	21.0	arm H	25.0
total H	33.75	total W	70.5	depth	25.0

For KYDEX® flat arms add suffix K and \$748

Dynamic load tested to 1000 lbs per three seater

CAL 133, add \$453 List per three seater



6113M



Pricing May 2023
Discount 57.7% from List prices

spec™

MAS SIN 33721

COOPER COLLECTION - DWIGHT Lounge Seating

Designed for today's healthcare facilities

Two and Three Seaters with full arms

Standard Features

- Separate seat and back
- Wood components in Beech, in any of 9 standard stains or stain-to-match for no extra charge
- Fully welded frame with 1.625" steel legs
- Frame in any Spectone color
- Glides
- Velcro removable back covers
- Replaceable seats
- Arms replaceable in the field
- Use in connected layouts for no extra charge
- Ships assembled
- Ships 1/carton 26 cu ft (2 seater),
1/carton 39 cu ft (3 seater)

Options

- Wood or polyurethane arms, in flat (WF or PF) or rounded (WR or PR) profile
- Round polyurethane arms available in Black, Sterling Grey and Taupe (RAL 7006)
- Flat polyurethane arms available in Black only
- KYDEX® flat arms available in Black (B) or Taupe RAL 7006 (T) or Sterling Grey (G)
- Connected and freestanding tables
- Antibacterial and antimicrobial fabrics available
- Different fabric on seat and back for no extra charge
- CAL 133

Contact Spec Customer Service to railroad fabrics (specify repeat info and yardage requirement will be provided) and for repeats greater than 5" x 5"



Two Seater with full arms

COM 3.5 yds

0.75 yd COM per single seat

1.0 yd COM per single back

MODEL	COM	GR 1	GR 2	GR 3	GR 4	GR 5	GR 6
6122M	2498	2727	2805	2958	3184	3362	3590

Dimensions (inches)

seat H	18.0	seat W	21.0	arm H	25.0
total H	33.75	total W	48.5	depth	25.0

For KYDEX® flat arms add suffix K and \$561

Meets BIFMA Seating Durability test to 750 lbs per two seater

CAL 133, add \$302 List per two seater



6122M

Three Seater with full arms

COM 5.25 yds

0.75 yd COM per single seat

1.0 yd COM per single back

MODEL	COM	GR 1	GR 2	GR 3	GR 4	GR 5	GR 6
6123M	3649	3992	4106	4334	4680	4939	5282

Dimensions (inches)

seat H	18.0	seat W	21.0	arm H	25.0
total H	33.75	total W	70.5	depth	25.0

For KYDEX® flat arms add suffix K and \$748

Meets BIFMA Seating Durability test to 1000 lbs per three seater

CAL 133, add \$453 List per three seater



6123M



Pricing May 2023
Discount 57.7% from List prices

spec

MAS SIN 33721

COOPER COLLECTION - DWIGHT Lounge Seating

Designed for today's healthcare facilities

Loveseat with arms

Standard Features

- Separate seat and back
- Wood components in Beech, in any of 9 standard stains or stain-to-match for no extra charge
- Fully welded frame with 1.625" steel legs
- Frame in any Spectone color
- Glides
- Velcro removable back covers
- Replaceable seats
- Arms replaceable in the field
- Use in connected layouts for no extra charge
- Ships assembled
- Ships 1/carton 20 cu ft

Options

- Wood or polyurethane arms, in flat (WF or PF) or rounded (WR or PR) profile
- Round polyurethane arms available in Black, Sterling Grey and Taupe (RAL 7006)
- Flat polyurethane arms available in Black only
- KYDEX® flat arms available in Black (B) or Taupe RAL 7006 (T) or Sterling Grey (G)
- Connected and freestanding tables
- Antibacterial and antimicrobial fabrics available
- Different fabric on seat and back for no extra charge
- CAL 133

Contact Spec Customer Service to railroad fabrics (specify repeat info and yardage requirement will be provided) and for repeats greater than 5" x 5"



Loveseat with arms

COM 3.5 yds

1.75 yd COM per single seat

1.75 yd COM per single back

MODEL	COM	GR 1	GR 2	GR 3	GR 4	GR 5	GR 6
6101L	2118	2387	2473	2657	2919	3122	3393

Dimensions (inches)

seat H	18.0	seat W	42.0	arm H	25.0
total H	33.75	total W	44.75	depth	25.0

For KYDEX® flat arms add suffix K and \$374

Meets BIFMA Seating Durability Test to 750 lbs per chair

CAL 133, add \$233 List per chair



6101L



Pricing May 2023
Discount 57.7% from List prices

spec™

MAS SIN 33721

COOPER COLLECTION - DWIGHT Lounge Seating

Designed for today's healthcare facilities

Bariatric Single Seater with arms

Standard Features

- Separate seat and back
- Wood components in Beech, in any of 9 standard stains or stain-to-match for no extra charge
- Fully welded frame with 1.625" steel legs
- Frame in any Spectone color
- Glides
- Velcro removable back covers
- Replaceable seats
- Arms replaceable in the field
- Use in connected layouts for no extra charge
- Bariatric seating cannot connect to bariatric seating
- Ships assembled
- Ships 1/carton 20 cu ft

Options

- Wood or polyurethane arms, in flat (WF or PF) or rounded (WR or PR) profile
- Round polyurethane arms available in Black, Sterling Grey and Taupe (RAL 7006)
- Flat polyurethane arms available in Black only
- KYDEX® flat arms available in Black (B) or Taupe RAL 7006 (T) or Sterling Grey (G)
- Connected and freestanding tables
- Antibacterial and antimicrobial fabrics available
- Different fabric on seat and back for no extra charge
- CAL 133

Contact Spec Customer Service to railroad fabrics (specify repeat info and yardage requirement will be provided) and for repeats greater than 5" x 5"



Bariatric Single Seater with arms

COM 3.0 yds

1.5 yd COM per single seat

1.5 yd COM per single back

MODEL	COM	GR 1	GR 2	GR 3	GR 4	GR 5	GR 6
6101G	1610	1841	1918	2070	2299	2473	2705

Dimensions (inches)

seat H	18.0	seat W	30.0	arm H	25.0
total H	33.75	total W	34.25	depth	25.0

For KYDEX® flat arms add suffix K and \$374

Meets BIFMA Seating Durability Test to 750 lbs per chair

CAL 133, add \$190 List per chair



6101G



Pricing May 2023
Discount 57.7% from List prices

spec™

MAS SIN 33721

COOPER COLLECTION - DWIGHT Lounge Seating

Designed for today's healthcare facilities
Highback Single Seater with arms – Ottoman

Standard Features

- Separate seat and back
- Wood components in Beech, in any of 9 standard stains or stain-to-match for no extra charge
- Fully welded frame with 1.625" steel legs
- Frame in any Spectone color
- Glides
- Velcro removable back covers
- Replaceable seats
- Arms replaceable in the field
- Use in connected layouts for no extra charge
- Ships assembled
- Ships 1/carton 19 cu ft
- Ottoman ships 1/carton 5 cu ft

Options

- Wood or polyurethane arms, in flat (WF or PF) or rounded (WR or PR) profile
- Round polyurethane arms available in Black, Sterling Grey and Taupe (RAL 7006)
- Flat polyurethane arms available in Black only
- KYDEX® flat arms available in Black (B) or Taupe RAL 7006 (T) or Sterling Grey (G)
- Vinyl insert on top of the back, add \$53 List/seat back
- Connected and freestanding tables
- Antibacterial and antimicrobial fabrics available
- Different fabric on seat and back for no extra charge
- CAL 133

Contact Spec Customer Service to railroad fabrics (specify repeat info and yardage requirement will be provided) and for repeats greater than 5" x 5"



Highback Single Seater with arms

COM 2.5 yds
0.75 yd COM per single seat
1.75 yds COM per single back

MODEL	COM	GR 1	GR 2	GR 3	GR 4	GR 5	GR 6
6101H	1446	1628	1683	1808	1985	2120	2349

Dimensions (inches)

seat H	18.0	seat W	21.0	arm H	25.0
total H	47.5	total W	25.25	depth	25.0

For KYDEX® flat arms add suffix K and \$374

Meets BIFMA Seating Durability test to 500 lbs per chair
CAL 133, add \$171 List per chair



6101H

Ottoman

0.5 yd COM per ottoman

MODEL	COM	GR 1	GR 2	GR 3	GR 4	GR 5	GR 6
6130F	589	632	648	680	725	760	819

Ottoman Dimensions (inches)

H	11.5	W	19.25	depth	12.25
---	------	---	-------	-------	-------

CAL 133, add \$70 List



6130F



Pricing May 2023
Discount 57.7% from List prices



MAS SIN 33721

COOPER COLLECTION - DWIGHT Lounge Seating

Designed for today's healthcare facilities

Half Panel Arm

Options

To order half panel arms, add Z to model number,
e.g. 6101**Z**

- Antibacterial and antimicrobial fabrics available
- CAL 133

***Pricing is for one half panel arm, e.g. for a single
seater chair with half panel arms, add two half panel
arms to cost of chair***

*Contact Spec Customer Service to railroad fabrics
(specify repeat info and yardage requirement will
be provided) and for repeats greater than 5" x 5"*



Half Panel Arm

COM 0.5 yds per half panel arm

MODEL	COM	GR 1	GR 2	GR 3	GR 4	GR 5	GR 6
Z	98	130	136	157	189	210	245

CAL 133, add \$54 List per half panel arm





Pricing May 2023
Discount 57.7% from List prices

spec™

MAS SIN 33721

COOPER COLLECTION - DWIGHT Lounge Seating

Designed for today's healthcare facilities

Easy Access Hip Single Seater with arms

Standard Features

- Separate seat and back
- Wood components in Beech, in any of 9 standard stains or stain-to-match for no extra charge
- Fully welded frame with 1.625" steel legs
- Frame in any Spectone color
- Glides
- Velcro removable back covers
- Replaceable seats
- Arms replaceable in the field
- 24" seat height, no seat pitch (level)
- Footrest which assists entering/exiting chair
- Ships assembled
- Ships 1/carton 19 cu ft

Options

- Wood or polyurethane arms, in flat (WF or PF) or rounded (WR or PR) profile
- Round polyurethane arms available in Black, Sterling Grey and Taupe (RAL 7006)
- Flat polyurethane arms available in Black only
- KYDEX® flat arms available in Black (B) or Taupe RAL 7006 (T) or Sterling Grey (G)
- Antibacterial and antimicrobial fabrics available
- Different fabric on seat and back for no extra charge
- CAL 133

Contact Spec Customer Service to railroad fabrics (specify repeat info and yardage requirement will be provided) and for repeats greater than 5" x 5"



Easy Access Hip Single Seater with arms

COM 1.75 yds

0.75 yd COM per single seat

1.0 yd COM per single back

MODEL	COM	GR 1	GR 2	GR 3	GR 4	GR 5	GR 6
6101ME	1635	1751	1784	1864	1977	2066	2181

Dimensions (inches)

seat H	24.0	seat W	21.0	arm H	32.0
total H	46.0	total W	25.25	depth	25.0

For KYDEX® flat arms add suffix K and \$374

Meets BIFMA Seating Durability test to 500 lbs per chair

CAL 133, add \$151 List per chair



6101ME



Pricing May 2023
Discount 57.7% from List prices

spec

MAS SIN 33721

COOPER COLLECTION - DWIGHT Lounge Seating

Designed for today's healthcare facilities

Single and Two Seater Benches

Standard Features

- Wood components in Beech, in any of 9 standard stains or stain-to-match for no extra charge
- Fully welded frame with 1.625" steel legs
- Frame in any Spectone color
- Glides
- Use in connected layouts for no extra charge
- Arms replaceable in the field
- Replaceable seats
- Ships assembled
- Ships 1/carton 9 cu ft (single seater), 14 cu ft (2 seater), 21 cu ft (3 seater)

Options

- Antibacterial and antimicrobial fabrics available
- CAL 133

Contact Spec Customer Service to railroad fabrics (specify repeat info and yardage requirement will be provided) and for repeats greater than 5" x 5"

Single Seater Bench

COM 1.0 yds

1.0 yd COM per single seat

MODEL	COM	GR 1	GR 2	GR 3	GR 4	GR 5	GR 6
6101B	831	906	932	983	1056	1113	1214

No arms

6101B	1133	1210	1229	1282	1356	1414	1522
--------------	-------------	-------------	-------------	-------------	-------------	-------------	-------------

End arms (WF/WR or PF/PR)

Dimensions (inches)

seat H	18.0	seat W	21.0	arm H	24.0	depth	26.25
total H	N/A	total W	24.25	total W	25.25		
		w/o arms		w/end arms			

Meets BIFMA Seating Durability Test to 500 lbs per bench
CAL 133, add \$70 List per bench



6101B

Two Seater Bench

COM 2.0 yds

1.0 yd COM per single seat

MODEL	COM	GR 1	GR 2	GR 3	GR 4	GR 5	GR 6
6102B	1160	1308	1356	1457	1607	1722	1912

No arms

6102B	1458	1609	1661	1758	1911	2024	2217
--------------	-------------	-------------	-------------	-------------	-------------	-------------	-------------

End arms (WF/WR or PF/PR)

6112B	1740	1891	1943	2040	2190	2306	2508
--------------	-------------	-------------	-------------	-------------	-------------	-------------	-------------

Arms between and at ends (WF/WR or PF/PR)

Dimensions (inches)

seat H	18.0	seat W	21.0	arm H	24.0	depth	26.25
total H	N/A	total W	45.25	total W	46.25		
		w/o arms		w/end arms			

Meets BIFMA Seating Durability Test to 750 lbs per two seat bench
CAL 133, add \$140 List per two seat bench



6102B

Toll Free: 1-888-761-7732



Pricing May 2023
Discount 57.7% from List prices

spec™

MAS SIN 33721

COOPER COLLECTION - DWIGHT Lounge Seating

Designed for today's healthcare facilities
Three Seater Bench

Standard Features

- Wood components in Beech, in any of 9 standard stains or stain-to-match for no extra charge
- Fully welded frame with 1.625" steel legs
- Frame in any Spectone color
- Glides
- Use in connected layouts for no extra charge
- Arms replaceable in the field
- Replaceable seats
- Ships assembled
- Ships 1/carton 9 cu ft (single seater), 14 cu ft (2 seater), 21 cu ft (3 seater)

Options

- Antibacterial and antimicrobial fabrics available
- CAL 133

Contact Spec Customer Service to railroad fabrics (specify repeat info and yardage requirement will be provided) and for repeats greater than 5" x 5"



Three Seater Bench

COM 3.0 yds
1.0 yd COM per single seat

MODEL	COM	GR 1	GR 2	GR 3	GR 4	GR 5	GR 6
6103B	1562	1783	1858	2009	2233	2406	2682

No arms

6103B	1864	2088	2163	2313	2539	2709	2995
--------------	-------------	-------------	-------------	-------------	-------------	-------------	-------------

End arms (WF/WR or PF/PR)

6113B	2508	2731	2806	2958	3181	3354	3655
--------------	-------------	-------------	-------------	-------------	-------------	-------------	-------------

Arms between and at ends (WF/WR or PF/PR)



6103B

Dimensions (inches)

seat H	18.0	seat W	21.0	arm H	24.0	depth	26.25
total H	N/A	total W	66.25	total W	67.25		
		w/o arms		w/end arms			

Meets BIFMA Seating Durability Test to 1000 lbs per three seat bench
CAL 133, add \$210 List per three seat bench





Pricing May 2023
Discount 57.7% from List prices

spec™

MAS SIN 33721

COOPER COLLECTION - DWIGHT Lounge Seating

Designed for today's healthcare facilities

Freestanding Lounge Tables – Corner and Spacer Connecting Tables

Standard Features

- Tops in laminate or veneer
- Select laminate tops from 15 standard laminates or choose any standard Wilsonart, Nevamar, Formica, Arborite and Pionite matte finish laminates at no upcharge.
- Freestanding lounge tables available with PVC Flat (PVF), 2mm (2MM), exposed Baltic Birch plywood (PF, PKNR) or hardwood (HB) edge
- Connecting table tops available with PVC Flat (PVF) edge, Self edge (SE) or hardwood (HB) edge
- 9 standard veneer and hardwood edge stains. Stain-to-match available for no extra charge.
- Steel legs and Beech table skirts
- Frame in any Spectone color
- Tops utilize NU Green earth friendly core
- Threaded replaceable glides
- 18" height

Options

- Non-standard laminates, contact Spec for pricing
- Custom size spacer tables for restricted spaces
- Self edge available at same cost as PVC Flat (PVF) edge
- Other sizes may be available

Radius Corner Tables are recommended for open areas

Freestanding Lounge Tables

Model	Laminate PVF/SE/2MM	Laminate PF/PKNR/HB	Veneer HB	Cu.Ft.
61 - 24 x 24 SQ	810	1055	1253	7.2
61 - 24 x 48 RE	1014	1284	1562	18
61 - 30 x 30 SQ	945	1124	1333	13.5
61 - 22 DIA	1012	1469	1726	7.2



Corner and Spacer Connecting Tables

Model	Laminate PVF/SE	Laminate HB Edge	Veneer HB Edge	Cu.Ft.
61RC - 28 x 28 <i>Radius Corner Table</i>	1054	1414	1658	2
61SC - 28 x 28 <i>Square Corner Table</i>	1151	1399	1543	2
61TC - 45 degree <i>Corner Table</i>	1054	1414	1658	2
61ST - 21 x 24 <i>Spacer Table</i>	715	1010	1157	2
61ET - 21 x 24 <i>End Table</i>	956	1250	1398	2

