



Pricing May 2023
Discount 57.7% from List prices

spec

MAS SIN 33721

COOPER COLLECTION - HUNTSVILLE Lounge Seating

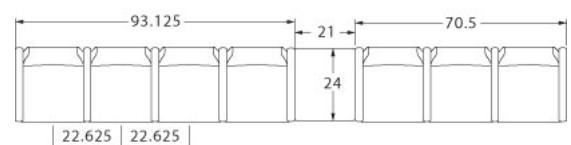
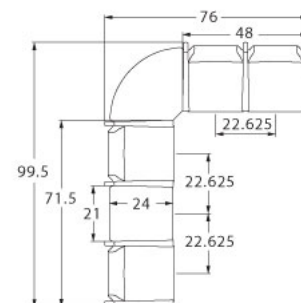
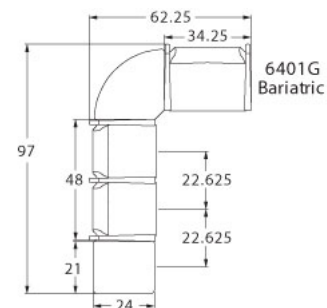
LAYOUTS



Description

- Spec's Huntsville offers the softer look and feel of wood, without sacrificing high durability.
- Your layout possibilities are unlimited with spacer, radius and corner tables – for both standard and bariatric seating in virtually any combination.
- Bariatric seating is a 30" wide seat and is load tested to 750 lbs. Cannot be connected to other bariatric seats.
- 21" seat width is standard.
- Standard in European Beech in any of 9 standard stains or stain-to-match for no extra charge.
- Choice of wood or polyurethane arms which are replaceable in the field.
- All models offer a choice of no center arms, half arms or full arms to the floor.
- Wall-saving frame is standard to protect both wall and fabric.
- Glides and separate seat and back are standard.
- Please send a drawing of the configuration you require with your order.
- For fabrics you wish railroaded or repeats larger than 5" x 5", please contact the factory with repeat information and yardage requirement will be provided.

LAYOUTS AND DIMENSIONS





Pricing May 2023
Discount 57.7% from List prices

spec™

MAS SIN 33721

COOPER COLLECTION - HUNTSVILLE Lounge Seating



PRODUCT CODE

6421M

Collection

6 : Cooper

Series

4 : Huntsville

Center Arm

0 : Outside Arms

1 : Half Arms

2 : Full Arms

Number of Seats

1 : Single Seater

2 : Two Seater

3 : Three Seater

Chair Type

M : Midback

H : Highback

L : Loveseat

G : Bariatric



OPTIONS

ARM TYPE



Polyurethane or Wood
**This image does not represent actual product arm.*

PANEL ARMS



Half Panel Arms



Full Panel Arms

FINISHES

FRAME



Select from one of our 9 standard wood stains or stain-to-match for no extra charge

FABRIC



Select fabrics from one of our textile partners

ARMS



Black

Select from one of our 9 standard wood stains or stain-to-match for no extra charge

See Spectone Card or specfurniture.com/tools-and-resources/product-resources/finishes for a complete list of finish options and colors.



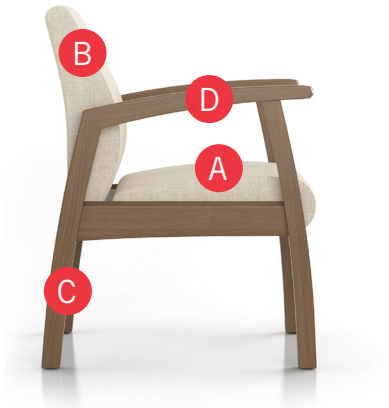
Pricing May 2023
Discount 57.7% from List prices



COOPER COLLECTION - HUNTSVILLE Lounge Seating

MAS SIN 33721

HOW TO ORDER



Specify Model

- A** Specify Fabric - Seat¹
Manufacturer, Pattern Name, Color
- B** Specify Fabric - Back¹
Manufacturer, Pattern Name, Color
- C** Specify Frame Finish
- D** Specify Arm Type and Color
Polyurethane / Wood

Optional: Polyurethane Arm, CAL 133, Moisture Barrier, Half or Full Panel Arms, Connecting and Freestanding Tables, Ottoman, Velcro Removable Headrest, Vinyl Headrest Insert

¹ When multiple fabrics are specified on two and three seat chairs, please provide a drawing and legend for fabric placement.



Model	Fabric - Seat	Fabric - Back	Frame Finish	Arm Type and Color
6401M	Momentum, Beeline, Canvas	Momentum, Beeline, Canvas	Studio Teak Stain	Wood, Studio Teak Stain



Pricing May 2023
Discount 57.7% from List prices



MAS SIN 33721

COOPER COLLECTION - HUNTSVILLE Lounge Seating

Designed for today's healthcare facilities

Single Seater with arms

Standard Features

- Separate seat and back
- Wood arms
- Wood components in Beech, in any of 9 standard stains or stain-to-match for no extra charge
- Wall-saving frame
- Velcro removable back covers
- Replaceable seats
- Threaded replaceable glides
- Use in connected layouts for no extra charge
- Ships assembled
- Ships 1/carton 15 cu ft

Options

- Replaceable rounded polyurethane arms (P) available in Black, add \$162 List
- Connected and freestanding tables
- Antibacterial and antimicrobial fabrics available
- Different fabric on seat and back for no extra charge
- CAL 133

Contact SpecTM Customer Service to railroad fabrics (specify repeat info and yardage requirement will be provided) and for repeats greater than 5" x 5"



Single Seater with arms

COM 1.75 yds
0.75 yd COM per single seat
1.0 yd COM per single back

MODEL	COM	GR 1	GR 2	GR 3	GR 4	GR 5	GR 6
6401M	1402	1518	1554	1632	1747	1834	1949

Dimensions (inches)

seat H	18.0	seat W	21.0	arm H	25.0
total H	33.75	total W	25.25	depth	27.5

Meets BIFMA Seating Durability Test to 500 lbs per chair
CAL 133, add \$151 List per seat



6401M



Pricing May 2023
Discount 57.7% from List prices

spec™

MAS SIN 33721

COOPER COLLECTION - HUNTSVILLE Lounge Seating

Designed for today's healthcare facilities

Two and Three Seaters with outside arms

Standard Features

- Separate seat and back
- Wood arms
- Wood components in Beech, in any of 9 standard stains or stain-to-match for no extra charge
- Wall-saving frame
- Velcro removable back covers
- Replaceable seats
- Threaded replaceable glides
- Use in connected layouts for no extra charge
- Ships assembled
- Ships 1/carton 26 cu ft (2 seater),
1/carton 39 cu ft (3 seater)

Options

- Replaceable rounded polyurethane arms (P) available in Black, add \$162 List
- Connected and freestanding tables
- Antibacterial and antimicrobial fabrics available
- Different fabric on seat and back for no extra charge
- CAL 133

Contact Spec Customer Service to railroad fabrics (specify repeat info and yardage requirement will be provided) and for repeats greater than 5" x 5"



Two Seater with outside arms

COM 3.5 yds
0.75 yd COM per single seat
1.0 yd COM per single back

MODEL	COM	GR 1	GR 2	GR 3	GR 4	GR 5	GR 6
6402M	2012	2241	2317	2470	2699	2875	3103

Dimensions (inches)							
seat H	18.0	seat W	21.0	arm H	25.0		
total H	33.75	total W	46.5	depth	27.5		

Meets BIFMA Seating Durability Test to 750 lbs per two seater
CAL 133, add \$302 List per two seater



6402M

Three Seater with outside arms

COM 5.25 yds
0.75 yd COM per single seat
1.0 yd COM per single back

MODEL	COM	GR 1	GR 2	GR 3	GR 4	GR 5	GR 6
6403M	2622	2968	3082	3311	3656	3917	4258

Dimensions (inches)							
seat H	18.0	seat W	21.0	arm H	25.0		
total H	33.75	total W	67.5	depth	27.5		

Meets BIFMA Seating Durability Test to 1000 lbs three seater
CAL 133, add \$453 List per three seater



6403M



Pricing May 2023
Discount 57.7% from List prices

spec™

MAS SIN 33721

COOPER COLLECTION - HUNTSVILLE Lounge Seating

Designed for today's healthcare facilities

Two and Three Seaters with half arms

Standard Features

- Separate seat and back
- Wood arms
- Wood components in Beech, in any of 9 standard stains or stain-to-match for no extra charge
- Wall-saving frame
- Velcro removable back covers
- Replaceable seats
- Threaded replaceable glides
- Use in connected layouts for no extra charge
- Ships assembled
- Ships 1/carton 26 cu ft (2 seater),
1/carton 39 cu ft (3 seater)

Options

- Replaceable rounded polyurethane arms (P) available in Black, add \$243 List for 6412M, or \$324 List for 6413M
- Connected and freestanding tables
- Antibacterial and antimicrobial fabrics available
- Different fabric on seat and back for no extra charge
- CAL 133

Contact Spec Customer Service to railroad fabrics (specify repeat info and yardage requirement will be provided) and for repeats greater than 5" x 5"



Two Seater with half arms

COM 3.5 yds
0.75 yd COM per single seat
1.0 yd COM per single back

MODEL	COM	GR 1	GR 2	GR 3	GR 4	GR 5	GR 6
6412M	2596	2825	2901	3052	3284	3458	3685

Dimensions (inches)

seat H	18.0	seat W	21.0	arm H	25.0
total H	33.75	total W	48.0	depth	27.5

Meets BIFMA Seating Durability Test to 750 lbs per two seater
CAL 133, add \$302 List per two seater



6412M

Three Seater with half arms

COM 5.25 yds
0.75 yd COM per single seat
1.0 yd COM per single back

MODEL	COM	GR 1	GR 2	GR 3	GR 4	GR 5	GR 6
6413M	3790	4130	4245	4477	4818	5080	5425

Dimensions (inches)

seat H	18.0	seat W	21.0	arm H	25.0
total H	33.75	total W	70.5	depth	27.5

Meets BIFMA Seating Durability Test to 1000 lbs per three seater
CAL 133, add \$453 List per three seater



6413M



Pricing May 2023
Discount 57.7% from List prices



MAS SIN 33721

COOPER COLLECTION - HUNTSVILLE Lounge Seating

Designed for today's healthcare facilities

Two and Three Seaters with full arms

Standard Features

- Separate seat and back
- Wood arms
- Wood components in Beech, in any of 9 standard stains or stain-to-match for no extra charge
- Wall-saving frame
- Velcro removable back covers
- Replaceable seats
- Threaded replaceable glides
- Use in connected layouts for no extra charge
- Ships assembled
- Ships 1/carton 26 cu ft (2 seater),
1/carton 39 cu ft (3 seater)

Options

- Replaceable rounded polyurethane arms (P) available in Black, add \$243 List for 6422M, or \$324 List for 6423M
- Connected and freestanding tables
- Antibacterial and antimicrobial fabrics available
- Different fabric on seat and back for no extra charge
- CAL 133

Contact Spec Customer Service to railroad fabrics (specify repeat info and yardage requirement will be provided) and for repeats greater than 5" x 5"



Two Seater with full arms

COM 3.5 yds
0.75 yd COM per single seat
1.0 yd COM per single back

MODEL	COM	GR 1	GR 2	GR 3	GR 4	GR 5	GR 6
6422M	2596	2825	2901	3052	3284	3458	3685

Dimensions (inches)

seat H	18.0	seat W	21.0	arm H	25.0
total H	33.75	total W	48.0	depth	27.5

Meets BIFMA Seating Durability Test to 750 lbs per two seater
CAL 133, add \$302 List per two seater



6422M

Three Seater with full arms

COM 5.25 yds
0.75 yd COM per single seat
1.0 yd COM per single back

MODEL	COM	GR 1	GR 2	GR 3	GR 4	GR 5	GR 6
6423M	3790	4130	4245	4477	4818	5080	5425

Dimensions (inches)

seat H	18.0	seat W	21.0	arm H	25.0
total H	33.75	total W	70.5	depth	27.5

Meets BIFMA Seating Durability Test to 1000 lbs per three seater
CAL 133, add \$453 List per three seater



6423M



Pricing May 2023
Discount 57.7% from List prices

spec

MAS SIN 33721

COOPER COLLECTION - HUNTSVILLE Lounge Seating

Designed for today's healthcare facilities

Loveseat with arms

Standard Features

- Separate seat and back
- Wood arms
- Wood components in Beech, in any of 9 standard stains or stain-to-match for no extra charge
- Wall-saving frame
- Velcro removable back covers
- Replaceable seats
- Threaded replaceable glides
- Use in connected layouts for no extra charge
- Ships assembled
- Ships 1/carton 20 cu ft

Options

- Replaceable rounded polyurethane arms (P) available in Black, add \$162 List
- Connected and freestanding tables
- Antibacterial and antimicrobial fabrics available
- Different fabric on seat and back for no extra charge
- CAL 133

Contact Spec Customer Service to railroad fabrics
(specify repeat info and yardage requirement will
be provided) and for repeats greater than 5" x 5"



Loveseat with arms

COM 3.5 yds

1.75 yd COM per single seat

1.75 yd COM per single back

MODEL	COM	GR 1	GR 2	GR 3	GR 4	GR 5	GR 6
6401L	2177	2446	2535	2715	2976	3183	3454

Dimensions (inches)

seat H	18.0	seat W	42.0	arm H	25.0
total H	33.75	total W	44.75	depth	27.5

Meets BIFMA Seating Durability Test to 750 lbs per chair
CAL 133, add \$233 List per chair



6401L



Pricing May 2023
Discount 57.7% from List prices

spec

MAS SIN 33721

COOPER COLLECTION - HUNTSVILLE Lounge Seating

Designed for today's healthcare facilities

Bariatric Single Seater with arms

Standard Features

- Separate seat and back
- Wood arms
- Wood components in Beech, in any of 9 standard stains or stain-to-match for no extra charge
- Wall-saving frame
- Velcro removable back covers
- Replaceable seats
- Threaded replaceable glides
- Use in connected layouts for no extra charge
- Bariatric seating cannot connect to bariatric seating
- Ships assembled
- Ships 1/carton 20 cu ft

Options

- Replaceable rounded polyurethane arms (P) available in Black, add \$162 List
- Connected and freestanding tables
- Antibacterial and antimicrobial fabrics available
- Different fabric on seat and back for no extra charge
- CAL 133

Contact Spec Customer Service to railroad fabrics (specify repeat info and yardage requirement will be provided) and for repeats greater than 5" x 5"



Bariatric Single Seater with arms

COM 3.0 yds

1.5 yd COM per single seat

1.5 yd COM per single back

MODEL	COM	GR 1	GR 2	GR 3	GR 4	GR 5	GR 6
6401G	1665	1892	1969	2123	2350	2527	2756

Dimensions (inches)

seat H	18.0	seat W	30.0	arm H	25.0
total H	33.75	total W	34.25	depth	27.5

Meets BIFMA Seating Durability Test to 750 lbs per chair
CAL 133, add \$190 List per chair



6401G



Pricing May 2023
Discount 57.7% from List prices

spec™

MAS SIN 33721

COOPER COLLECTION - HUNTSVILLE Lounge Seating

Designed for today's healthcare facilities
Highback Single Seater with arms – Ottoman

Standard Features

- Separate seat and back
- Wood arms
- Wood components in Beech, in any of 9 standard stains or stain-to-match for no extra charge
- Use in connected layouts for no extra charge
- Velcro removable back covers
- Replaceable seats
- Arms replaceable in the field
- Ships assembled
- Ships 1/carton 19 cu ft
- Ottoman ships 1/carton 5 cu ft

Options

- Replaceable rounded polyurethane arms (P) available in Black, add \$162 List
- Vinyl insert on top of the back, add \$53 List/seat back
- Connected and freestanding tables
- Antibacterial and antimicrobial fabrics available
- Different fabric on seat and back for no extra charge
- CAL 133

Contact Spec Customer Service to railroad fabrics
(specify repeat info and yardage requirement will
be provided) and for repeats greater than 5" x 5"



Highback Single Seater with arms

COM 2.5 yds
0.75 yd COM per single seat
1.75 yds COM per single back

MODEL	COM	GR 1	GR 2	GR 3	GR 4	GR 5	GR 6
6401H	1501	1677	1737	1857	2037	2173	2403

Dimensions (inches)

seat H	18.0	seat W	21.0	arm H	25.0
total H	47.5	total W	25.5	depth	27.5

Meets BIFMA Seating Durability Test to 500 lbs per chair
CAL 133, add \$171 List per chair



6401H

Ottoman

0.5 yd COM per ottoman

MODEL	COM	GR 1	GR 2	GR 3	GR 4	GR 5	GR 6
6430F	681	725	739	769	816	849	913

Ottoman Dimensions (inches)

H	11.5	W	19.25	depth	12.25
---	------	---	-------	-------	-------

CAL 133, add \$70 List



6430F



Pricing May 2023
Discount 57.7% from List prices



MAS SIN 33721

COOPER COLLECTION - HUNTSVILLE Lounge Seating

Designed for today's healthcare facilities
Half and Full Panel Arms

Options

To order half panel arms, add Z to model number,
e.g. 6401**Z**

- Antibacterial and antimicrobial fabrics available
- CAL 133

To order full panel arms, add ZC to model number,
e.g. 6401**ZC**

**Pricing is for one half panel arm, e.g. for a single
seater chair with half panel arms, add two half panel
arms to cost of chair**

Contact Spec Customer Service to railroad fabrics
(specify repeat info and yardage requirement will
be provided) and for repeats greater than 5" x 5"



Half & Full Panel Arms

COM 0.5 yds per half panel arm

MODEL	COM	GR 1	GR 2	GR 3	GR 4	GR 5	GR 6
Z	98	130	136	157	189	210	245

COM 0.75 yds per full panel arm

MODEL	COM	GR 1	GR 2	GR 3	GR 4	GR 5	GR 6
ZC	187	243	262	300	359	403	441

CAL 133, add \$55 List per half panel arm/ \$108 List per full panel arm





Pricing May 2023
Discount 57.7% from List prices

spec™

MAS SIN 33721

COOPER COLLECTION - HUNTSVILLE Lounge Seating

Designed for today's healthcare facilities

Freestanding Lounge Tables – Corner and Spacer Connecting Tables

Standard Features

- Tops in laminate or veneer
- Select laminate tops from 15 standard laminates or choose any standard Wilsonart, Nevamar, Formica, Arborite and Pionite matte finish laminates at no upcharge.
- Freestanding lounge tables available with PVC Flat (PVF), 2mm (2MM), exposed Baltic Birch plywood (PF, PKNR) or hardwood (HB) edge
- Connecting table tops available with PVC Flat (PVF) edge, Self edge (SE) or hardwood (HB) edge
- 9 standard veneer and hardwood edge stains. Stain-to-match available for no extra charge.
- Beech legs and Beech table skirts stained the same
- Threaded replaceable glides
- Tops utilize NU Green earth friendly core
- 18" height

Options

- Non-standard laminates, contact Spec for pricing
- Custom size spacer tables for restricted spaces
- Other sizes may be available

Radius Corner Tables are recommended for open areas

Freestanding Lounge Tables

Model	Laminate PVF/SE/2MM	Laminate PF/PKNR/HB	Veneer HB	Cu.Ft.
64 - 24 x 24 SQ	1142	1389	1584	7.2
64 - 24 x 48 RE	1346	1619	1893	18
64 - 30 x 30 SQ	1278	1456	1666	13.5
64 - 22 DIA	1338	1793	2051	7.2



Corner and Spacer Connecting Tables

Model	Laminate PVF/SE	Laminate HB Edge	Veneer HB Edge	Cu.Ft.
64RC - 28 x 28 <i>Radius Corner Table</i>	1054	1414	1658	2
64SC - 28 x 28 <i>Square Corner Table</i>	1151	1399	1543	2
64TC - 45 degree <i>Corner Table</i>	1054	1414	1658	2
64ST - 21 x 24 <i>Spacer Table</i>	715	1010	1157	2
64ET - 21 x 24 <i>End Table</i>	956	1250	1398	2

