



Pricing May 2023
Discount 57.7% from List prices

spec

MAS SIN 33721

COOPER COLLECTION - MIDLAND Lounge Seating

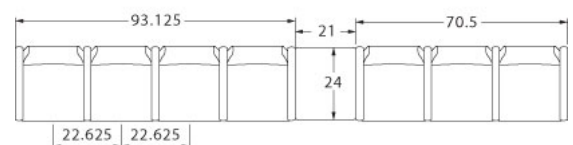
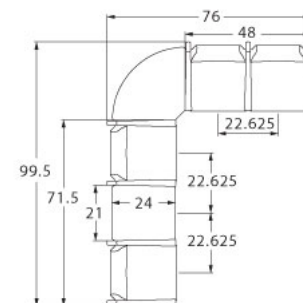
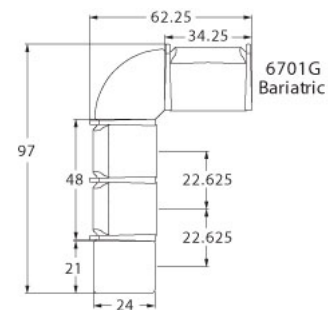
LAYOUTS



Description

- Spec's Midland offers a lighter, residential feel at a value price with extensive environmental considerations.
- Your layout possibilities are unlimited with spacer, radius and corner tables – for both standard and bariatric seating in virtually any combination.
- Bariatric seating is a 30" wide seat and is load tested to 750 lbs. Cannot be connected to other bariatric seats.
- 21" seat width is standard.
- Standard in European Beech in any of 9 standard stains or stain-to-match for no extra charge.
- Choice of wood or polyurethane arm caps which are replaceable in the field.
- All models offer a choice of no center arms, half arms or full arms to the floor.
- Wall-saving frame is standard to protect both wall and fabric.
- Glides and separate seat and back are standard.
- Please send a drawing of the configuration you require with your order.
- Ships assembled as one, two and three seater units.
- For fabrics you wish railroaded or repeats larger than 5" x 5", please contact the factory with repeat information and yardage requirement will be provided.

LAYOUTS AND DIMENSIONS





Pricing May 2023
Discount 57.7% from List prices

spec

MAS SIN 33721

COOPER COLLECTION - MIDLAND Lounge Seating



PRODUCT CODE

6 7 2 3 M

Collection

6 : Cooper

Series

7 : Midland

Center Arm

0 : Outside Arms

1 : Half Arms

2 : Full Arms

Number of Seats

1 : Single Seater

2 : Two Seater

3 : Three Seater

Chair Type

M : Mid Back

H : Highback

L : Loveseat

G : Bariatric



OPTIONS

ARM CAP



Polyurethane

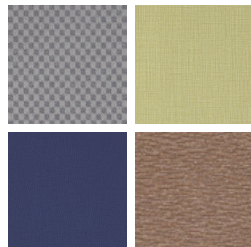
FINISHES

FRAME



Select from one of our 9 standard wood stains or stain-to-match for no extra charge

FABRIC



Select fabrics from one of our textile partners

ARM CAP



Select from one of our 9 standard wood stains or stain-to-match at no upcharge

See Spectone Card or specfurniture.com/tools-and-resources/product-resources/finishes for a complete list of finish options and colors.



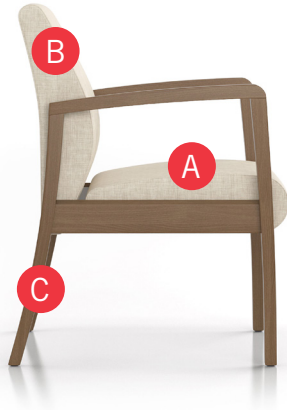
Pricing May 2023
Discount 57.7% from List prices



COOPER COLLECTION - MIDLAND Lounge Seating

MAS SIN 33721

HOW TO ORDER



Specify Model

- A Specify Fabric - Seat¹
Manufacturer, Pattern Name, Color
- B Specify Fabric - Back¹
Manufacturer, Pattern Name, Color
- C Specify Frame Finish

Optional: Polyurethane Arm Cap, CAL 133, Moisture Barrier, Connecting and Freestanding Tables, Ottoman, Vinyl Headrest Insert

¹ When multiple fabrics are specified on two and three seat chairs, please provide a drawing and legend for fabric placement.



| Model | Fabric - Seat | Fabric - Back | Frame Finish |
|-------|---------------------------|---------------------------|-------------------|
| 6701M | Momentum, Beeline, Canvas | Momentum, Beeline, Canvas | Studio Teak Stain |



Pricing May 2023
Discount 57.7% from List prices

spec

MAS SIN 33721

COOPER COLLECTION - MIDLAND Lounge Seating

Designed for today's healthcare facilities

Single Seater with arms

Standard Features

- Separate seat and back
- Wood components in Beech, in any of 9 standard stains or stain-to-match for no extra charge
- Wall-saving frame
- Velcro removable back covers
- Replaceable seats
- Threaded replaceable glides
- Use in connected layouts for no extra charge
- Ships assembled as 1, 2 or 3 seaters
- Ships 1/carton 15 cu ft

Options

- Replaceable polyurethane arm cap (P) available in Black, Sterling Grey and Taupe (RAL 7006) add \$118 List
- Connected and freestanding tables
- Antibacterial and antimicrobial fabrics available
- Different fabric on seat and back for no extra charge
- CAL 133

Contact Spec™ Customer Service to railroad fabrics (specify repeat info and yardage requirement will be provided) and for repeats greater than 5" x 5"



Single Seater with arms

COM 1.75 yds

0.75 yd COM per single seat

1.0 yd COM per single back

| MODEL | COM | GR 1 | GR 2 | GR 3 | GR 4 | GR 5 | GR 6 |
|--------------|-------------|-------------|-------------|-------------|-------------|-------------|-------------|
| 6701M | 1146 | 1260 | 1296 | 1375 | 1486 | 1576 | 1689 |

Dimensions (inches)

| | | | | | |
|---------|-------|---------|-------|-------|-------|
| seat H | 18.0 | seat W | 21.0 | arm H | 25.0 |
| total H | 33.75 | total W | 25.25 | depth | 26.25 |

Meets BIFMA Seating Durability Test to 500 lbs per chair
CAL 133, add \$151 List per seat



6701M



Pricing May 2023
Discount 57.7% from List prices

spec

MAS SIN 33721

COOPER COLLECTION - MIDLAND Lounge Seating

Designed for today's healthcare facilities

Two and Three Seaters with outside arms

Standard Features

- Separate seat and back
- Wood components in Beech, in any of 9 standard stains or stain-to-match for no extra charge
- Wall-saving frame
- Velcro removable back covers
- Replaceable seats
- Threaded replaceable glides
- Use in connected layouts for no extra charge
- Ships assembled as 1, 2 or 3 seaters
- Ships 1/carton 26 cu ft (2 seater),
1/carton 39 cu ft (3 seater)

Options

- Replaceable polyurethane arm cap (P) available in Black, Sterling Grey and Taupe (RAL 7006) add \$118 List
- Connected and freestanding tables
- Antibacterial and antimicrobial fabrics available
- Different fabric on seat and back for no extra charge
- CAL 133

Contact Spec Customer Service to railroad fabrics (specify repeat info and yardage requirement will be provided) and for repeats greater than 5" x 5"



Two Seater with outside arms

COM 3.5 yds

0.75 yd COM per single seat

1.0 yd COM per single back

| MODEL | COM | GR 1 | GR 2 | GR 3 | GR 4 | GR 5 | GR 6 |
|-------|------|------|------|------|------|------|------|
| 6702M | 1783 | 2014 | 2088 | 2244 | 2469 | 2644 | 2877 |

Dimensions (inches)

| | | | | | |
|---------|-------|---------|-------|-------|-------|
| seat H | 18.0 | seat W | 21.0 | arm H | 25.0 |
| total H | 33.75 | total W | 44.75 | depth | 26.25 |

Meets BIFMA Seating Durability Test to 750 lbs per two seater
CAL 133, add \$302 List per two seater



6702M

Three Seater with outside arms

COM 5.25 yds

0.75 yd COM per single seat

1.0 yd COM per single back

| MODEL | COM | GR 1 | GR 2 | GR 3 | GR 4 | GR 5 | GR 6 |
|-------|------|------|------|------|------|------|------|
| 6703M | 2460 | 2802 | 2911 | 3151 | 3484 | 3749 | 4096 |

Dimensions (inches)

| | | | | | |
|---------|-------|---------|------|-------|-------|
| seat H | 18.0 | seat W | 21.0 | arm H | 25.0 |
| total H | 33.75 | total W | 67.5 | depth | 26.25 |

Meets BIFMA Seating Durability Test to 1000 lbs per three seater
CAL 133, add \$453 List per three seater



6703M



Pricing May 2023
Discount 57.7% from List prices

spec

MAS SIN 33721

COOPER COLLECTION - MIDLAND Lounge Seating

Designed for today's healthcare facilities

Two and Three Seaters with half arms

Standard Features

- Separate seat and back
- Wood components in Beech, in any of 9 standard stains or stain-to-match for no extra charge
- Wall-saving frame
- Velcro removable back covers
- Replaceable seats
- Threaded replaceable glides
- Use in connected layouts for no extra charge
- Ships assembled as 1, 2 or 3 seaters
- Ships 1/carton 26 cu ft (2 seater),
1/carton 39 cu ft (3 seater)

Options

- Replaceable polyurethane arm caps (P) available in Black, Sterling Grey and Taupe (RAL 7006) add \$177 List for 6722M, or \$236 List for 6723M
- Connected and freestanding tables
- Antibacterial and antimicrobial fabrics available
- Different fabric on seat and back for no extra charge
- CAL 133

Contact Spec Customer Service to railroad fabrics (specify repeat info and yardage requirement will be provided) and for repeats greater than 5" x 5"



Two Seater with half arms

COM 3.5 yds
0.75 yd COM per single seat
1.0 yd COM per single back

| MODEL | COM | GR 1 | GR 2 | GR 3 | GR 4 | GR 5 | GR 6 |
|-------|------|------|------|------|------|------|------|
| 6712M | 2014 | 2242 | 2317 | 2474 | 2698 | 2875 | 3106 |

Dimensions (inches)

| | | | | | |
|---------|-------|---------|------|-------|-------|
| seat H | 18.0 | seat W | 21.0 | arm H | 25.0 |
| total H | 33.75 | total W | 48.0 | depth | 26.25 |

Meets BIFMA Seating Durability Test to 750 lbs two seater
CAL 133, add \$302 List per two seater



6712M

Three Seater with half arms

COM 5.25 yds
0.75 yd COM per single seat
1.0 yd COM per single back

| MODEL | COM | GR 1 | GR 2 | GR 3 | GR 4 | GR 5 | GR 6 |
|-------|------|------|------|------|------|------|------|
| 6713M | 2947 | 3292 | 3401 | 3636 | 3974 | 4240 | 4584 |

Dimensions (inches)

| | | | | | |
|---------|-------|---------|------|-------|-------|
| seat H | 18.0 | seat W | 21.0 | arm H | 25.0 |
| total H | 33.75 | total W | 70.5 | depth | 26.25 |

Meets BIFMA Seating Durability Test to 1000 lbs per three seater
CAL 133, add \$453 List per three seater



6713M



Pricing May 2023
Discount 57.7% from List prices

spec

MAS SIN 33721

COOPER COLLECTION - MIDLAND Lounge Seating

Designed for today's healthcare facilities

Two and Three Seaters with full arms

Standard Features

- Separate seat and back
- Wood components in Beech, in any of 9 standard stains or stain-to-match for no extra charge
- Wall-saving frame
- Velcro removable back covers
- Replaceable seats
- Threaded replaceable glides
- Use in connected layouts for no extra charge
- Ships assembled as 1, 2 or 3 seaters
- Ships 1/carton 26 cu ft (2 seater),
1/carton 39 cu ft (3 seater)

Options

- Replaceable polyurethane arm caps (P) available in Black, Sterling Grey and Taupe (RAL 7006) add \$177 List for 6722M, or \$236 List for 6723M
- Connected and freestanding tables
- Antibacterial and antimicrobial fabrics available
- Different fabric on seat and back for no extra charge
- CAL 133

Contact Spec Customer Service to railroad fabrics (specify repeat info and yardage requirement will be provided) and for repeats greater than 5" x 5"



Two Seater with full arms

COM 3.5 yds

0.75 yd COM per single seat

1.0 yd COM per single back

| MODEL | COM | GR 1 | GR 2 | GR 3 | GR 4 | GR 5 | GR 6 |
|--------------|-------------|-------------|-------------|-------------|-------------|-------------|-------------|
| 6722M | 2014 | 2242 | 2317 | 2474 | 2698 | 2875 | 3106 |

Dimensions (inches)

| | | | | | |
|---------|-------|---------|------|-------|-------|
| seat H | 18.0 | seat W | 21.0 | arm H | 25.0 |
| total H | 33.75 | total W | 48.0 | depth | 26.25 |

Meets BIFMA Seating Durability Test to 750 lbs per two seater

CAL 133, add \$302 List per two seater



6722M

Three Seater with full arms

COM 5.25 yds

0.75 yd COM per single seat

1.0 yd COM per single back

| MODEL | COM | GR 1 | GR 2 | GR 3 | GR 4 | GR 5 | GR 6 |
|--------------|-------------|-------------|-------------|-------------|-------------|-------------|-------------|
| 6723M | 2947 | 3292 | 3401 | 3636 | 3974 | 4240 | 4584 |

Dimensions (inches)

| | | | | | |
|---------|-------|---------|------|-------|-------|
| seat H | 18.0 | seat W | 21.0 | arm H | 25.0 |
| total H | 33.75 | total W | 70.5 | depth | 26.25 |

Meets BIFMA Seating Durability Test to 1000 lbs per three seater

CAL 133, add \$453 List per three seater



6723M



Pricing May 2023
Discount 57.7% from List prices



MAS SIN 33721

COOPER COLLECTION - MIDLAND Lounge Seating

Designed for today's healthcare facilities

Loveseat with arms

Standard Features

- Separate seat and back
- Wood components in Beech, in any of 9 standard stains or stain-to-match for no extra charge
- Wall-saving frame
- Velcro removable back covers
- Replaceable seats
- Threaded replaceable glides
- Use in connected layouts for no extra charge
- Ships assembled as 1, 2 or 3 seaters
- Ships 1/carton 20 cu ft

Options

- Replaceable polyurethane arm cap (P) available in Black, Sterling Grey and Taupe (RAL 7006) add \$118 List
- Connected and freestanding tables
- Antibacterial and antimicrobial fabrics available
- Different fabric on seat and back for no extra charge
- CAL 133

Contact Spec Customer Service to railroad fabrics (specify repeat info and yardage requirement will be provided) and for repeats greater than 5" x 5"



Loveseat with arms

COM 3.5 yds

1.75 yd COM per single seat

1.75 yd COM per single back

| MODEL | COM | GR 1 | GR 2 | GR 3 | GR 4 | GR 5 | GR 6 |
|--------------|-------------|-------------|-------------|-------------|-------------|-------------|-------------|
| 6701L | 1755 | 2024 | 2109 | 2293 | 2552 | 2759 | 3030 |

Dimensions (inches)

| | | | | | |
|---------|-------|---------|-------|-------|-------|
| seat H | 18.0 | seat W | 42.0 | arm H | 25.0 |
| total H | 33.75 | total W | 46.25 | depth | 26.25 |

Meets BIFMA Seating Durability Test to 750 lbs per chair
CAL 133, add \$233 List per chair



6701L



Pricing May 2023
Discount 57.7% from List prices

spec

MAS SIN 33721

COOPER COLLECTION - MIDLAND Lounge Seating

Designed for today's healthcare facilities

Bariatric Single Seater with arms

Standard Features

- Separate seat and back
- Wood components in Beech, in any of 9 standard stains or stain-to-match for no extra charge
- Wall-saving frame
- Velcro removable back covers
- Replaceable seats
- Threaded replaceable glides
- Use in connected layouts for no extra charge
- Ships assembled as 1, 2 or 3 seaters
- Ships 1/carton 20 cu ft

Options

- Replaceable polyurethane arm cap (P) available in Black, Sterling Grey and Taupe (RAL 7006) add \$118 List
- Connected and freestanding tables
- Antibacterial and antimicrobial fabrics available
- Different fabric on seat and back for no extra charge
- CAL 133

Contact Spec Customer Service to railroad fabrics (specify repeat info and yardage requirement will be provided) and for repeats greater than 5" x 5"



Bariatric Single Seater with arms

COM 3.0 yds

1.5 yd COM per single seat

1.5 yd COM per single back

| MODEL | COM | GR 1 | GR 2 | GR 3 | GR 4 | GR 5 | GR 6 |
|--------------|-------------|-------------|-------------|-------------|-------------|-------------|-------------|
| 6701G | 1490 | 1718 | 1792 | 1950 | 2172 | 2349 | 2580 |

Dimensions (inches)

| | | | | | |
|---------|-------|---------|-------|-------|-------|
| seat H | 18.0 | seat W | 30.0 | arm H | 25.0 |
| total H | 33.75 | total W | 34.25 | depth | 26.25 |

Meets BIFMA Seating Durability Test to 750 lbs per chair
CAL 133, add \$190 List per chair



6701G



Pricing May 2023
Discount 57.7% from List prices

spec

MAS SIN 33721

COOPER COLLECTION - MIDLAND Lounge Seating

Designed for today's healthcare facilities
Highback Single Seater with arms – Ottoman

Standard Features

- Separate seat and back
- Wood components in Beech, in any of 9 standard stains or stain-to-match for no extra charge
- Wall-saving frame
- Threaded replaceable glides
- Use in connected layouts for no extra charge
- Ships assembled as 1, 2 or 3 seaters
- Ships 1/carton 20 cu ft
- Ottoman ships 1/carton 5 cu ft

Options

- Replaceable polyurethane arm cap (P) available in Black, Sterling Grey and Taupe (RAL 7006) add \$118 List
- Vinyl insert on top of the back, add \$53 List/seat back
- Connected and freestanding tables
- Antibacterial and antimicrobial fabrics available
- Different fabric on seat and back for no extra charge
- CAL 133

Contact Spec Customer Service to railroad fabrics
(specify repeat info and yardage requirement will be provided) and for repeats greater than 5" x 5"



Highback Single Seater with arms

COM 2.5 yds
0.75 yd COM per single seat
1.75 yds COM per single back

| MODEL | COM | GR 1 | GR 2 | GR 3 | GR 4 | GR 5 | GR 6 |
|-------|------|------|------|------|------|------|------|
| 6701H | 1326 | 1521 | 1581 | 1712 | 1899 | 2044 | 2237 |

Dimensions (inches)

| | | | | | |
|---------|------|---------|-------|-------|-------|
| seat H | 18.0 | seat W | 21.0 | arm H | 25.0 |
| total H | 47.5 | total W | 25.25 | depth | 26.25 |

Meets BIFMA Seating Durability Test to 500 lbs per chair
CAL 133, add \$171 List per chair



6701H

Ottoman

COM 0.5 yd

| MODEL | COM | GR 1 | GR 2 | GR 3 | GR 4 | GR 5 | GR 6 |
|-------|-----|------|------|------|------|------|------|
| 6730F | 715 | 761 | 778 | 805 | 851 | 887 | 947 |

Dimensions (inches)

| | | | | | |
|---|------|---|-------|-------|-------|
| H | 11.5 | W | 19.25 | depth | 12.25 |
|---|------|---|-------|-------|-------|

CAL 133, add \$70 List per Ottoman



6730F



Pricing May 2023
Discount 57.7% from List prices

spec™

MAS SIN 33721

COOPER COLLECTION - MIDLAND Lounge Seating

Designed for today's healthcare facilities

Freestanding Lounge Tables – Corner and Spacer Connecting Tables

Standard Features

- Tops in laminate or veneer
- Select laminate tops from 15 standard laminates or choose any standard Wilsonart, Nevamar, Formica, Arborite and Pionite matte finish laminates at no upcharge.
- Freestanding lounge tables available with PVC Flat (PVF), 2mm (2MM), exposed Baltic Birch plywood (PF, PKNR) or hardwood (HB) edge
- Connecting table tops available with PVC Flat (PVF) edge, Self edge (SE) or hardwood (HB) edge
- 9 standard veneer and hardwood edge stains. Stain-to-match available for no extra charge.
- Beech legs and Beech table skirts stained the same
- Tops utilize NU Green earth friendly core
- Threaded replaceable glides
- 18" height

Options

- Non-standard laminates, contact Spec for pricing
- Custom size spacer tables for restricted spaces
- Self edge available at same cost as PVC Flat (PVF) edge
- Other sizes may be available

Radius Corner Tables are recommended for open areas

Freestanding Lounge Tables

| Model | Laminate PVF/SE/2MM | Laminate PF/PKNR/HB | Veneer HB | Cu.Ft. |
|-----------------|------------------------|------------------------|--------------|--------|
| 67 - 24 x 24 SQ | 1142 | 1389 | 1584 | 7.2 |
| 67 - 24 x 48 RE | 1346 | 1619 | 1893 | 18 |
| 67 - 30 x 30 SQ | 1278 | 1456 | 1666 | 13.5 |
| 67 - 22 DIA | 1338 | 1793 | 2051 | 7.2 |



Corner and Spacer Connecting Tables

| Model | Laminate PVF/SE | Laminate HB Edge | Veneer HB Edge | Cu.Ft. |
|--|--------------------|---------------------|-------------------|--------|
| 67RC - 28 x 28 <i>Radius Corner Table</i> | 1054 | 1414 | 1658 | 2 |
| 67SC - 28 x 28 <i>Square Corner Table</i> | 1151 | 1399 | 1543 | 2 |
| 67TC - 45 degree <i>Corner Table</i> | 1054 | 1414 | 1658 | 2 |
| 67ST - 21 x 24 <i>Spacer Table</i> | 715 | 1010 | 1157 | 2 |
| 67ET - 21 x 24 <i>End Table</i> | 956 | 1250 | 1398 | 2 |

