

## DIGNITY2 Behavioral Health Series



## PRODUCT CODE

46 0 1 M - N - UU

## Series

46 : Dignity2

## Center Arm

0 : Outside Arms

## Number of Seats

1 : Single Seater

2 : Two Seater

3 : Three Seater

## Chair Type

M : Mid Back

G : Bariatric

## Arm Type

N/A : Regular Arm

N : No Arm

## Arm Panel Finish

LL : Laminate Outside and Inside

LU : Laminate Outside/Upholstered Inside

UL : Upholstered Outside/Laminated Inside

UU : Upholstered Outside and Inside

## OPTIONS

## ARM TYPE



Polyurethane



Wood



KYDEX®

End arm caps only.

Corian arms available. Call for pricing.

## WALL SAVING



## EXTENDED SIDE PANEL

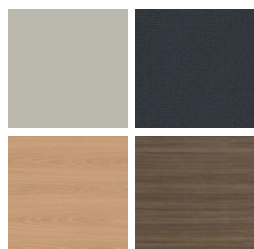


## SEAT PAN



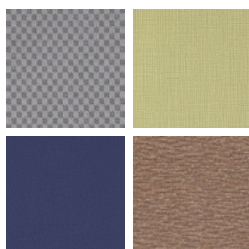
## FINISHES

## ARM PANEL LAMINATE



Select from 15 standard laminates or choose any standard Wilsonart, Nevamar, Formica, Arborite and Pionite matte finish laminates for no extra charge

## FABRIC



Select fabrics from one of our textile partners

## ARMS



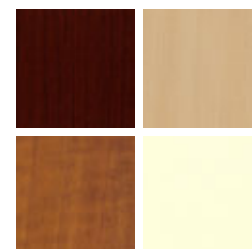
Black

Sterling Grey

Taupe

Select from one of our 9 standard wood stains or stain-to-match for no extra charge

## ARM PANEL THERMOFOIL



Select from one of our 8 standard Thermofoil finishes

## FRAME

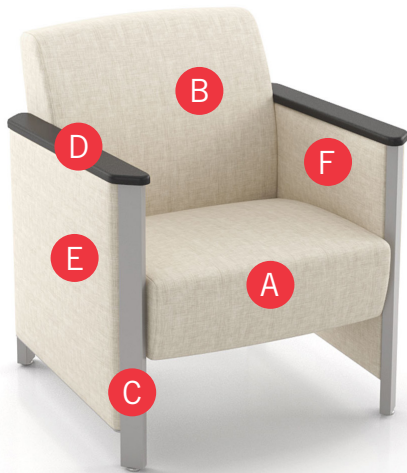


Select from one of our 76 standard Spectone colors

See Spectone Card or [specfurniture.com/tools-and-resources/product-resources/finishes](http://specfurniture.com/tools-and-resources/product-resources/finishes) for a complete list of finish options and colors.

## DIGNITY2 Behavioral Health Series

### HOW TO ORDER



#### Specify Model

- A** Specify Fabric - Seat<sup>1</sup>  
*Manufacturer, Pattern Name, Color*
- B** Specify Fabric - Back<sup>1</sup>  
*Manufacturer, Pattern Name, Color*
- C** Specify Frame Finish
- D** Specify Arm Cap Type and Color  
*Polyurethane / Wood / KYDEX® (\$)*
- E** Specify Outside/Inside Panel Finish  
**F** *For Laminate Panels: Manufacturer, Laminate Name, Laminate Code*  
*For Fabric Panels: Manufacturer, Pattern Name, Color*

Optional: KYDEX® Arm Cap, Thermofoil side panels, Additional Weight, Nylon Caps, Floor Mounting Straps, Wall Saving, Extended Side Panel, Elimination of Separated Seat and Back, CAL 133, Moisture Barrier, Connecting and Freestanding Tables, Dolly

<sup>1</sup> When multiple fabrics are specified on two and three seat chairs, please provide a drawing and legend for fabric placement.

Model	Fabric - Seat	Fabric - Back	Frame Finish	Arm Cap Type and Color	Outside Panel	Inside Panel
4601M-LU	Momentum, Beeline, Canvas	Momentum, Beeline, Canvas	Silver	Polyurethane, Black	Momentum, Beeline, Canvas	Momentum, Beeline, Canvas

## DIGNITY2 Behavioral Health Series

### Standard Features

- Separate seat and back
- Meets seating durability test to 500 lbs per chair
- Arm caps available in wood, or polyurethane
- Laminate or upholstered side panels on inside and outside of arm in various combinations
- Upholstered side panels can match or contrast seat/back
- Select from 15 standard laminates or choose any standard Wilsonart, Nevamar, Formica, Arborite and Pionite matte finish laminates for no extra charge.
- Sculpted steel leg in any Spectone finish
- No protruding legs or hardware
- Tamper proof fastenings
- Non-removable steel leveling glides
- Ships assembled, 1/carton 15 cu ft

Contact Spec Customer Service to railroad fabrics (specify repeat info and yardage requirement will be provided) and for repeats greater than 5" x 5"

### Options

- Polyurethane arm caps available in Black (B) or Taupe RAL 7006 (T) or Sterling Grey (G)
- For wood arm caps, select from 9 standard stains, or stain-to-match for no extra charge
- KYDEX® arm caps available in Black (B) or Taupe RAL 7006 (T) or Sterling Grey (G)
- Thermofoil side panels on inside and outside of arm, call Customer Service for pricing and finishes
- Add up to 20 lbs of additional weight per seat, add \$192 List per seat
- Four white nylon caps can be added to prevent rust in areas with frequent cleaning/mopping. Add \$20 List
- Non-standard laminates, contact Spec for pricing
- Antibacterial and antimicrobial fabrics available
- Floor mounting straps available, call Customer Service
- Connecting and freestanding tables
- CAL 133
- Elimination of separated seat and back available with either solid or perforated seat pan, call Customer Service

### Single Seater with arms

COM 1.85 yds

0.75 yd COM per single seat / 1.10 yd COM per single back

MODEL	COM	GR 1	GR 2	GR 3	GR 4	GR 5	GR 6
<b>4601M-LL</b>	<b>1941</b>	<b>2064</b>	<b>2103</b>	<b>2183</b>	<b>2304</b>	<b>2394</b>	<b>2514</b>

Side panel – laminated, outside and inside

CAL 133, add \$151 List per chair

COM 2.85 yds

0.75 yd COM per single seat / 1.10 yd COM per single back / .5 yd COM per panel

MODEL	COM	GR 1	GR 2	GR 3	GR 4	GR 5	GR 6
<b>4601M-LU</b>	<b>2095</b>	<b>2286</b>	<b>2348</b>	<b>2474</b>	<b>2663</b>	<b>2804</b>	<b>2994</b>

Side panel – laminated, outside, upholstered inside

CAL 133, add \$259 List per chair

COM 2.85 yds

0.75 yd COM per single seat / 1.10 yd COM per single back / .5 yd COM per panel

MODEL	COM	GR 1	GR 2	GR 3	GR 4	GR 5	GR 6
<b>4601M-UL</b>	<b>2095</b>	<b>2286</b>	<b>2348</b>	<b>2474</b>	<b>2663</b>	<b>2804</b>	<b>2994</b>

Side panel – upholstered outside, laminated inside

CAL 133, add \$259 List per chair

COM 3.85 yds

0.75 yd COM per single seat / 1.10 yd COM per single back / 1.0 yd COM per panel

MODEL	COM	GR 1	GR 2	GR 3	GR 4	GR 5	GR 6
<b>4601M-UU</b>	<b>2247</b>	<b>2507</b>	<b>2592</b>	<b>2766</b>	<b>3020</b>	<b>3216</b>	<b>3472</b>

Side panel – upholstered, outside and inside

CAL 133, add \$361 List per chair

Dimensions (inches)

seat H	18.0	seat W	23.0	arm H	26.0
total H	31.75	total W	28.5	depth	30.0

For KYDEX® arms add suffix K and \$408



**4601M**  
94 lbs

## DIGNITY2 Behavioral Health Series

### Standard Features

- Separate seat and back
- Meets seating durability test to 750 lbs per two seater
- Arm caps available in wood, or polyurethane
- Laminate or upholstered side panels on inside and outside of arm in various combinations
- Upholstered side panels can match or contrast seat/back
- Select from 15 standard laminates or choose any standard Wilsonart, Nevamar, Formica, Arborite and Pionite matte finish laminates for no extra charge.
- Sculpted steel leg in any Spectone finish
- No protruding legs or hardware
- Tamper proof fastenings
- Non-removable steel leveling glides
- Ships assembled, 1/carton 15 cu ft

Contact Spec Customer Service to railroad fabrics (specify repeat info and yardage requirement will be provided) and for repeats greater than 5" x 5"

### Options

- Polyurethane arm caps available in Black (B) or Taupe RAL 7006 (T) or Sterling Grey (G)
- For wood arm caps, select from 9 standard stains, or stain-to-match for no extra charge
- KYDEX® arm caps available in Black (B) or Taupe RAL 7006 (T) or Sterling Grey (G)
- Thermofoil side panels on inside and outside of arm, call Customer Service for pricing and finishes
- Add up to 20 lbs of additional weight per seat, add \$192 List per seat
- Four white nylon caps can be added to prevent rust in areas with frequent cleaning/mopping. Add \$20 List
- Non-standard laminates, contact Spec for pricing
- Antibacterial and antimicrobial fabrics available
- Floor mounting straps available, call Customer Service
- Connecting and freestanding tables
- CAL 133
- Elimination of separated seat and back available with either solid or perforated seat pan, call Customer Service

### Two Seater with outside arms

COM 3.70 yds

0.75 yd COM per single seat / 1.10 yd COM per single back

MODEL	COM	GR 1	GR 2	GR 3	GR 4	GR 5	GR 6
<b>4602M-LL</b>	<b>2852</b>	<b>3093</b>	<b>3173</b>	<b>3333</b>	<b>3574</b>	<b>3753</b>	<b>3996</b>

Side panel – laminated, outside and inside

CAL 133, add \$305 List per two seater

COM 4.70 yds

0.75 yd COM per single seat / 1.10 yd COM per single back / .5 yd COM per panel

MODEL	COM	GR 1	GR 2	GR 3	GR 4	GR 5	GR 6
<b>4602M-LU</b>	<b>3005</b>	<b>3315</b>	<b>3420</b>	<b>3622</b>	<b>3934</b>	<b>4168</b>	<b>4476</b>

Side panel – laminated, outside, upholstered inside

CAL 133, add \$408 List per two seater

COM 4.70 yds

0.75 yd COM per single seat / 1.10 yd COM per single back / .5 yd COM per panel

MODEL	COM	GR 1	GR 2	GR 3	GR 4	GR 5	GR 6
<b>4602M-UL</b>	<b>3005</b>	<b>3315</b>	<b>3420</b>	<b>3622</b>	<b>3934</b>	<b>4168</b>	<b>4476</b>

Side panel – upholstered outside, laminated inside

CAL 133, add \$408 List per two seater

COM 5.70 yds

0.75 yd COM per single seat / 1.10 yd COM per single back / 1.0 yd COM per panel

MODEL	COM	GR 1	GR 2	GR 3	GR 4	GR 5	GR 6
<b>4602M-UU</b>	<b>3156</b>	<b>3537</b>	<b>3662</b>	<b>3913</b>	<b>4289</b>	<b>4576</b>	<b>4958</b>

Side panel – upholstered, outside and inside

CAL 133, add \$512 List per two seater

Dimensions (inches)

seat H	18.0	seat W	45.5	arm H	26.0
total H	31.75	total W	51.0	depth	30.0

For KYDEX® arms add suffix K and \$408



**4602M**  
148 lbs

## DIGNITY2 Behavioral Health Series

### Standard Features

- Separate seat and back
- Meets seating durability test to 1000 lbs per three seater
- Arm caps available in wood, or polyurethane
- Laminate or upholstered side panels on inside and outside of arm in various combinations
- Upholstered side panels can match or contrast seat/back
- Select from 15 standard laminates or choose any standard Wilsonart, Nevamar, Formica, Arborite and Pionite matte finish laminates for no extra charge.
- Sculpted steel leg in any Spectone finish
- No protruding legs or hardware
- Tamper proof fastenings
- Non-removable steel leveling glides
- Ships assembled, 1/carton 15 cu ft

Contact Spec Customer Service to railroad fabrics (specify repeat info and yardage requirement will be provided) and for repeats greater than 5" x 5"

### Three Seater with outside arms

COM 5.55 yds

0.75 yd COM per single seat / 1.10 yd COM per single back

MODEL	COM	GR 1	GR 2	GR 3	GR 4	GR 5	GR 6
<b>4603M-LL</b>	<b>3761</b>	<b>4125</b>	<b>4244</b>	<b>4485</b>	<b>4846</b>	<b>5117</b>	<b>5481</b>

Side panel – laminated, outside and inside

CAL 133, add \$457 List per three seater

COM 6.55 yds

0.75 yd COM per single seat / 1.10 yd COM per single back / .5 yd COM per panel

MODEL	COM	GR 1	GR 2	GR 3	GR 4	GR 5	GR 6
<b>4603M-LU</b>	<b>3912</b>	<b>4345</b>	<b>4487</b>	<b>4778</b>	<b>5205</b>	<b>5526</b>	<b>5961</b>

Side panel – laminated, outside, upholstered inside

CAL 133, add \$561 List per three seater

COM 6.55 yds

0.75 yd COM per single seat / 1.10 yd COM per single back / .5 yd COM per panel

MODEL	COM	GR 1	GR 2	GR 3	GR 4	GR 5	GR 6
<b>4603M-UL</b>	<b>3912</b>	<b>4345</b>	<b>4487</b>	<b>4778</b>	<b>5205</b>	<b>5526</b>	<b>5961</b>

Side panel – upholstered outside, laminated inside

CAL 133, add \$561 List per three seater

COM 7.55 yds

0.75 yd COM per single seat / 1.10 yd COM per single back / 1.0 yd COM per panel

MODEL	COM	GR 1	GR 2	GR 3	GR 4	GR 5	GR 6
<b>4603M-UU</b>	<b>4066</b>	<b>4568</b>	<b>4735</b>	<b>5067</b>	<b>5560</b>	<b>5938</b>	<b>6442</b>

Side panel – upholstered, outside and inside

CAL 133, add \$666 List per three seater

Dimensions (inches)

seat H	18.0	seat W	68.0	arm H	26.0
total H	31.75	total W	74.0	depth	30.0

For KYDEX® arms add suffix K and \$408

### Options

- Polyurethane arm caps available in Black (B) or Taupe RAL 7006 (T) or Sterling Grey (G)
- For wood arm caps, select from 9 standard stains, or stain-to-match for no extra charge
- KYDEX® arm caps available in Black (B) or Taupe RAL 7006 (T) or Sterling Grey (G)
- Thermofoil side panels on inside and outside of arm, call Customer Service for pricing and finishes
- Add up to 20 lbs of additional weight per seat, add \$192 List per seat
- Four white nylon caps can be added to prevent rust in areas with frequent cleaning/mopping. Add \$20 List
- Non-standard laminates, contact Spec for pricing
- Antibacterial and antimicrobial fabrics available
- Floor mounting straps available, call Customer Service
- Connecting and freestanding tables
- CAL 133
- Elimination of separated seat and back available with either solid or perforated seat pan, call Customer Service



**4603M**  
203 lbs

## DIGNITY2 Behavioral Health Series

### Standard Features

- Separate seat and back
- Meets seating durability test to 750 lbs per chair
- Arm caps available in wood, or polyurethane
- Laminate or upholstered side panels on inside and outside of arm in various combinations
- Upholstered side panels can match or contrast seat/back
- Select from 15 standard laminates or choose any standard Wilsonart, Nevamar, Formica, Arborite and Pionite matte finish laminates for no extra charge.
- Sculpted steel leg in any Spectone finish
- No protruding legs or hardware
- Tamper proof fastenings
- Non-removable steel leveling glides
- Ships assembled, 1/carton 15 cu ft

Contact Spec Customer Service to railroad fabrics (specify repeat info and yardage requirement will be provided) and for repeats greater than 5" x 5"

### Options

- Polyurethane arm caps available in Black (B) or Taupe RAL 7006 (T) or Sterling Grey (G)
- For wood arm caps, select from 9 standard stains, or stain-to-match for no extra charge
- KYDEX® arm caps available in Black (B) or Taupe RAL 7006 (T) or Sterling Grey (G)
- Thermofoil side panels on inside and outside of arm, call Customer Service for pricing and finishes
- Add up to 20 lbs of additional weight per seat, add \$192 List per seat
- Four white nylon caps can be added to prevent rust in areas with frequent cleaning/mopping. Add \$20 List
- Non-standard laminates, contact Spec for pricing
- Antibacterial and antimicrobial fabrics available
- Floor mounting straps available, call Customer Service
- Connecting and freestanding tables
- CAL 133
- Elimination of separated seat and back available with either solid or perforated seat pan, call Customer Service

### Bariatric Single Seater with arms

COM 3.25 yds

1.5 yd COM per single seat / 1.75 yd COM per single back

MODEL	COM	GR 1	GR 2	GR 3	GR 4	GR 5	GR 6
<b>4601G-LL</b>	<b>2510</b>	<b>2738</b>	<b>2810</b>	<b>2959</b>	<b>3183</b>	<b>3352</b>	<b>3576</b>

Side panel – laminated, outside and inside

CAL 133, add \$190 List per chair

COM 4.25 yds

1.5 yd COM per single seat / 1.75 yd COM per single back / .5 yd COM per panel

MODEL	COM	GR 1	GR 2	GR 3	GR 4	GR 5	GR 6
<b>4601G-LU</b>	<b>2664</b>	<b>2959</b>	<b>3055</b>	<b>3249</b>	<b>3539</b>	<b>3759</b>	<b>4053</b>

Side panel – laminated, outside, upholstered inside

CAL 133, add \$297 List per chair

COM 4.25 yds

1.5 yd COM per single seat / 1.75 yd COM per single back / .5 yd COM per panel

MODEL	COM	GR 1	GR 2	GR 3	GR 4	GR 5	GR 6
<b>4601G-UL</b>	<b>2664</b>	<b>2959</b>	<b>3055</b>	<b>3249</b>	<b>3539</b>	<b>3759</b>	<b>4053</b>

Side panel – upholstered outside, laminated inside

CAL 133, add \$297 List per chair

COM 5.25 yds

1.5 yd COM per single seat / 1.75 yd COM per single back / 1.0 yd COM per panel

MODEL	COM	GR 1	GR 2	GR 3	GR 4	GR 5	GR 6
<b>4601G-UU</b>	<b>2817</b>	<b>3181</b>	<b>3299</b>	<b>3539</b>	<b>3902</b>	<b>4173</b>	<b>4539</b>

Side panel – upholstered, outside and inside

CAL 133, add \$403 List per chair

Dimensions (inches)

seat H	18.0	seat W	31.0	arm H	26.0
total H	31.75	total W	36.5	depth	30.0

For KYDEX® arms add suffix K and \$408



**4601G**  
112 lbs



## DIGNITY2 Behavioral Health Series

### Standard Features

- Separate seat and back
- Meets seating durability test to 500 lbs per chair
- Arm caps available in wood, or polyurethane
- Laminate or upholstered side panels on inside and outside of arm in various combinations
- Upholstered side panels can match or contrast seat/back
- Select from 15 standard laminates or choose any standard Wilsonart, Nevamar, Formica, Arborite and Pionite matte finish laminates for no extra charge.
- Sculpted steel leg in any Spectone finish
- No protruding legs or hardware
- Tamper proof fastenings
- Non-removable steel leveling glides
- Ships assembled, 1/carton 15 cu ft

Contact Spec Customer Service to railroad fabrics (specify repeat info and yardage requirement will be provided) and for repeats greater than 5" x 5"

### Options

- Polyurethane arm caps available in Black (B) or Taupe RAL 7006 (T) or Sterling Grey (G)
- For wood arm caps, select from 9 standard stains, or stain-to-match for no extra charge
- KYDEX® arm caps available in Black (B) or Taupe RAL 7006 (T) or Sterling Grey (G)
- Thermofoil side panels on inside and outside of arm, call Customer Service for pricing and finishes
- Add up to 20 lbs of additional weight per seat, add \$192 List per seat
- Four white nylon caps can be added to prevent rust in areas with frequent cleaning/mopping. Add \$20 List
- Non-standard laminates, contact Spec for pricing
- Antibacterial and antimicrobial fabrics available
- Floor mounting straps available, call Customer Service
- Connecting and freestanding tables
- CAL 133
- Elimination of separated seat and back available with either solid or perforated seat pan, call Customer Service

### Single Seater with no arms

COM 1.85 yds

0.75 yd COM per single seat / 1.10 yd COM per single back

MODEL	COM	GR 1	GR 2	GR 3	GR 4	GR 5	GR 6
<b>4601M-LL-N</b>	<b>1913</b>	<b>2033</b>	<b>2075</b>	<b>2155</b>	<b>2274</b>	<b>2365</b>	<b>2487</b>

Side panel – laminated, outside and inside

CAL 133, add \$151 List per chair

COM 2.85 yds

0.75 yd COM per single seat / 1.10 yd COM per single back / .5 yd COM per panel

MODEL	COM	GR 1	GR 2	GR 3	GR 4	GR 5	GR 6
<b>4601M-LU-N</b>	<b>2065</b>	<b>2256</b>	<b>2318</b>	<b>2444</b>	<b>2635</b>	<b>2773</b>	<b>2964</b>

Side panel – laminated, outside, upholstered inside

CAL 133, add \$259 List per chair

COM 2.85 yds

0.75 yd COM per single seat / 1.10 yd COM per single back / .5 yd COM per panel

MODEL	COM	GR 1	GR 2	GR 3	GR 4	GR 5	GR 6
<b>4601M-UL-N</b>	<b>2065</b>	<b>2256</b>	<b>2318</b>	<b>2444</b>	<b>2635</b>	<b>2773</b>	<b>2964</b>

Side panel – upholstered outside, laminated inside

CAL 133, add \$259 List per chair

COM 3.85 yds

0.75 yd COM per single seat / 1.10 yd COM per single back / 1.0 yd COM per panel

MODEL	COM	GR 1	GR 2	GR 3	GR 4	GR 5	GR 6
<b>4601M-UU-N</b>	<b>2217</b>	<b>2479</b>	<b>2564</b>	<b>2736</b>	<b>2992</b>	<b>3185</b>	<b>3444</b>

Side panel – upholstered, outside and inside

CAL 133, add \$361 List per chair

Dimensions (inches)

seat H	18.0	seat W	23.0	arm H	17.5
total H	31.75	total W	28.5	depth	30.0

For KYDEX® arms add suffix K and \$408



**4601M-N**  
90 lbs

## DIGNITY2 Behavioral Health Series

### Standard Features

- Separate seat and back
- Meets seating durability test to 750 lbs per two seater
- Arm caps available in wood, or polyurethane
- Laminate or upholstered side panels on inside and outside of arm in various combinations
- Upholstered side panels can match or contrast seat/back
- Select from 15 standard laminates or choose any standard Wilsonart, Nevamar, Formica, Arborite and Pionite matte finish laminates for no extra charge.
- Sculpted steel leg in any Spectone finish
- No protruding legs or hardware
- Tamper proof fastenings
- Non-removable steel leveling glides
- Ships assembled, 1/carton 15 cu ft

Contact Spec Customer Service to railroad fabrics (specify repeat info and yardage requirement will be provided) and for repeats greater than 5" x 5"

### Options

- Polyurethane arm caps available in Black (B) or Taupe RAL 7006 (T) or Sterling Grey (G)
- For wood arm caps, select from 9 standard stains, or stain-to-match for no extra charge
- KYDEX® arm caps available in Black (B) or Taupe RAL 7006 (T) or Sterling Grey (G)
- Thermofoil side panels on inside and outside of arm, call Customer Service for pricing and finishes
- Add up to 20 lbs of additional weight per seat, add \$192 List per seat
- Four white nylon caps can be added to prevent rust in areas with frequent cleaning/mopping. Add \$20 List
- Non-standard laminates, contact Spec for pricing
- Antibacterial and antimicrobial fabrics available
- Floor mounting straps available, call Customer Service
- Connecting and freestanding tables
- CAL 133
- Elimination of separated seat and back available with either solid or perforated seat pan, call Customer Service

### Two Seater with no arms

COM 3.70 yds

0.75 yd COM per single seat / 1.10 yd COM per single back

MODEL	COM	GR 1	GR 2	GR 3	GR 4	GR 5	GR 6
<b>4602M-LL-N</b>	<b>2822</b>	<b>3065</b>	<b>3145</b>	<b>3306</b>	<b>3541</b>	<b>3726</b>	<b>3967</b>

Side panel – laminated, outside and inside

CAL 133, add \$305 List per two seater

COM 4.70 yds

0.75 yd COM per single seat / 1.10 yd COM per single back / .5 yd COM per panel

MODEL	COM	GR 1	GR 2	GR 3	GR 4	GR 5	GR 6
<b>4602M-LU-N</b>	<b>2975</b>	<b>3286</b>	<b>3387</b>	<b>3593</b>	<b>3903</b>	<b>4139</b>	<b>4449</b>

Side panel – laminated, outside, upholstered inside

CAL 133, add \$408 List per two seater

COM 4.70 yds

0.75 yd COM per single seat / 1.10 yd COM per single back / .5 yd COM per panel

MODEL	COM	GR 1	GR 2	GR 3	GR 4	GR 5	GR 6
<b>4602M-UL-N</b>	<b>2975</b>	<b>3286</b>	<b>3387</b>	<b>3593</b>	<b>3903</b>	<b>4139</b>	<b>4449</b>

Side panel – upholstered outside, laminated inside

CAL 133, add \$408 List per two seater

COM 5.70 yds

0.75 yd COM per single seat / 1.10 yd COM per single back / 1.0 yd COM per panel

MODEL	COM	GR 1	GR 2	GR 3	GR 4	GR 5	GR 6
<b>4602M-UU-N</b>	<b>3129</b>	<b>3511</b>	<b>3633</b>	<b>3887</b>	<b>4261</b>	<b>4547</b>	<b>4930</b>

Side panel – upholstered, outside and inside

CAL 133, add \$512 List per two seater

Dimensions (inches)

seat H	18.0	seat W	45.0	arm H	17.5
total H	31.75	total W	51.0	depth	30.0

For KYDEX® arms add suffix K and \$408



**4602M-N**  
144 lbs



## DIGNITY2 Behavioral Health Series

### Standard Features

- Separate seat and back
- Meets seating durability test to 1000 lbs per three seater
- Arm caps available in wood, or polyurethane
- Laminate or upholstered side panels on inside and outside of arm in various combinations
- Upholstered side panels can match or contrast seat/back
- Select from 15 standard laminates or choose any standard Wilsonart, Nevamar, Formica, Arborite and Pionite matte finish laminates for no extra charge.
- Sculpted steel leg in any Spectone finish
- No protruding legs or hardware
- Tamper proof fastenings
- Non-removable steel leveling glides
- Ships assembled, 1/carton 15 cu ft

Contact Spec Customer Service to railroad fabrics (specify repeat info and yardage requirement will be provided) and for repeats greater than 5" x 5"

### Three Seater with no arms

COM 5.55 yds

0.75 yd COM per single seat / 1.10 yd COM per single back

MODEL	COM	GR 1	GR 2	GR 3	GR 4	GR 5	GR 6
<b>4603M-LL-N</b>	<b>3731</b>	<b>4096</b>	<b>4216</b>	<b>4457</b>	<b>4816</b>	<b>5088</b>	<b>5450</b>

Side panel – laminated, outside and inside

CAL 133, add \$457 List per three seater

COM 6.55 yds

0.75 yd COM per single seat / 1.10 yd COM per single back / .5 yd COM per panel

MODEL	COM	GR 1	GR 2	GR 3	GR 4	GR 5	GR 6
<b>4603M-LU-N</b>	<b>3884</b>	<b>4318</b>	<b>4459</b>	<b>4748</b>	<b>5176</b>	<b>5498</b>	<b>5929</b>

Side panel – laminated, outside, upholstered inside

CAL 133, add \$561 List per three seater

COM 6.55 yds

0.75 yd COM per single seat / 1.10 yd COM per single back / .5 yd COM per panel

MODEL	COM	GR 1	GR 2	GR 3	GR 4	GR 5	GR 6
<b>4603M-UL-N</b>	<b>3884</b>	<b>4318</b>	<b>4459</b>	<b>4748</b>	<b>5176</b>	<b>5498</b>	<b>5929</b>

Side panel – upholstered outside, laminated inside

CAL 133, add \$561 List per three seater

COM 7.55 yds

0.75 yd COM per single seat / 1.10 yd COM per single back / 1.0 yd COM per panel

MODEL	COM	GR 1	GR 2	GR 3	GR 4	GR 5	GR 6
<b>4603M-UU-N</b>	<b>4037</b>	<b>4542</b>	<b>4701</b>	<b>5039</b>	<b>5534</b>	<b>5909</b>	<b>6410</b>

Side panel – upholstered, outside and inside

CAL 133, add \$666 List per three seater

Dimensions (inches)

seat H	18.0	seat W	68.0	arm H	17.5
total H	31.75	total W	74.0	depth	30.0

For KYDEX® arms add suffix K and \$408

### Options

- Polyurethane arm caps available in Black (B) or Taupe RAL 7006 (T) or Sterling Grey (G)
- For wood arm caps, select from 9 standard stains, or stain-to-match for no extra charge
- KYDEX® arm caps available in Black (B) or Taupe RAL 7006 (T) or Sterling Grey (G)
- Thermofoil side panels on inside and outside of arm, call Customer Service for pricing and finishes
- Add up to 20 lbs of additional weight per seat, add \$192 List per seat
- Four white nylon caps can be added to prevent rust in areas with frequent cleaning/mopping. Add \$20 List
- Non-standard laminates, contact Spec for pricing
- Antibacterial and antimicrobial fabrics available
- Floor mounting straps available, call Customer Service
- Connecting and freestanding tables
- CAL 133
- Elimination of separated seat and back available with either solid or perforated seat pan, call Customer Service



**4603M-N**  
199 lbs

## DIGNITY2 Behavioral Health Series

### Standard Features

- Separate seat and back
- Meets seating durability test to 750 lbs per chair
- Arm caps available in wood, or polyurethane
- Laminate or upholstered side panels on inside and outside of arm in various combinations
- Upholstered side panels can match or contrast seat/back
- Select from 15 standard laminates or choose any standard Wilsonart, Nevamar, Formica, Arborite and Pionite matte finish laminates for no extra charge.
- Sculpted steel leg in any Spectone finish
- No protruding legs or hardware
- Tamper proof fastenings
- Non-removable steel leveling glides
- Ships assembled, 1/carton 15 cu ft

Contact Spec Customer Service to railroad fabrics (specify repeat info and yardage requirement will be provided) and for repeats greater than 5" x 5"

### Options

- Polyurethane arm caps available in Black (B) or Taupe RAL 7006 (T) or Sterling Grey (G)
- For wood arm caps, select from 9 standard stains, or stain-to-match for no extra charge
- KYDEX® arm caps available in Black (B) or Taupe RAL 7006 (T) or Sterling Grey (G)
- Thermofoil side panels on inside and outside of arm, call Customer Service for pricing and finishes
- Add up to 20 lbs of additional weight per seat, add \$192 List per seat
- Four white nylon caps can be added to prevent rust in areas with frequent cleaning/mopping. Add \$20 List
- Non-standard laminates, contact Spec for pricing
- Antibacterial and antimicrobial fabrics available
- Floor mounting straps available, call Customer Service
- Connecting and freestanding tables
- CAL 133
- Elimination of separated seat and back available with either solid or perforated seat pan, call Customer Service

### Bariatric Single Seater with no arms

COM 3.25 yds

1.5 yd COM per single seat / 1.75 yd COM per single back

MODEL	COM	GR 1	GR 2	GR 3	GR 4	GR 5	GR 6
<b>4601G-LL-N</b>	<b>2484</b>	<b>2710</b>	<b>2782</b>	<b>2931</b>	<b>3154</b>	<b>3322</b>	<b>3547</b>

Side panel – laminated, outside and inside

CAL 133, add \$190 List per chair

COM 4.25 yds

1.5 yd COM per single seat / 1.75 yd COM per single back / .5 yd COM per panel

MODEL	COM	GR 1	GR 2	GR 3	GR 4	GR 5	GR 6
<b>4601G-LU-N</b>	<b>2636</b>	<b>2931</b>	<b>3024</b>	<b>3219</b>	<b>3513</b>	<b>3730</b>	<b>4026</b>

Side panel – laminated, outside, upholstered inside

CAL 133, add \$297 List per chair

COM 4.25 yds

1.5 yd COM per single seat / 1.75 yd COM per single back / .5 yd COM per panel

MODEL	COM	GR 1	GR 2	GR 3	GR 4	GR 5	GR 6
<b>4601G-UL-N</b>	<b>2636</b>	<b>2931</b>	<b>3024</b>	<b>3219</b>	<b>3513</b>	<b>3730</b>	<b>4026</b>

Side panel – upholstered outside, laminated inside

CAL 133, add \$297 List per chair

COM 5.25 yds

1.5 yd COM per single seat / 1.75 yd COM per single back / 1.0 yd COM per panel

MODEL	COM	GR 1	GR 2	GR 3	GR 4	GR 5	GR 6
<b>4601G-UU-N</b>	<b>2789</b>	<b>3153</b>	<b>3271</b>	<b>3513</b>	<b>3873</b>	<b>4144</b>	<b>4508</b>

Side panel – upholstered, outside and inside

CAL 133, add \$403 List per chair

Dimensions (inches)

seat H	18.0	seat W	31.0	arm H	17.5
total H	31.75	total W	36.5	depth	30.0

For KYDEX® arms add suffix K and \$408



**4601G-N**  
108 lbs

## DIGNITY2 Behavioral Health Series

### Standard Features

- Separate seat and back
- Meets seating durability test to 750 lbs per two seater
- Arm caps available in wood, or polyurethane
- Laminate or upholstered side panels on inside and outside of arm in various combinations
- Upholstered side panels can match or contrast seat/back
- Select from 15 standard laminates or choose any standard Wilsonart, Nevamar, Formica, Arborite and Pionite matte finish laminates for no extra charge.
- Sculpted steel leg in any Spectone finish
- No protruding legs or hardware
- Tamper proof fastenings
- Non-removable steel leveling glides
- Ships assembled, 1/carton 15 cu ft

Contact Spec Customer Service to railroad fabrics (specify repeat info and yardage requirement will be provided) and for repeats greater than 5" x 5"

### Options

- Polyurethane arm caps available in Black (B) or Taupe RAL 7006 (T) or Sterling Grey (G)
- For wood arm caps, select from 9 standard stains, or stain-to-match for no extra charge
- KYDEX® end and polyurethane middle arm caps available in Black (B), Taupe RAL 7006 (T), or Sterling Grey (G).
- Thermofoil side panels on inside and outside of arm, call Customer Service for pricing and finishes
- Add up to 20 lbs of additional weight per seat, add \$192 List per seat
- Four white nylon caps can be added to prevent rust in areas with frequent cleaning/mopping. Add \$20 List
- Non-standard laminates, contact Spec for pricing
- Antibacterial and antimicrobial fabrics available
- Floor mounting straps available, call Customer Service
- Connecting and freestanding tables
- CAL 133
- Elimination of separated seat and back available with either solid or perforated seat pan, call Customer Service

### Two Seater with half arms

COM 3.70 yds

0.75 yd COM per single seat / 1.10 yd COM per single back

MODEL	COM	GR 1	GR 2	GR 3	GR 4	GR 5	GR 6
<b>4612M-LL</b>	<b>3400</b>	<b>3645</b>	<b>3727</b>	<b>3884</b>	<b>4127</b>	<b>4306</b>	<b>4548</b>

Side panel – laminated, outside and inside

CAL 133, add \$305 List per two seater

COM 5.20 yds

0.75 yd COM per single seat / 1.10 yd COM per single back / .5 yd COM per panel

MODEL	COM	GR 1	GR 2	GR 3	GR 4	GR 5	GR 6
<b>4612M-LU</b>	<b>3554</b>	<b>3899</b>	<b>4015</b>	<b>4243</b>	<b>4590</b>	<b>4846</b>	<b>5192</b>

Side panel – laminated outside, upholstered inside, half arms will be upholstered

CAL 133, add \$462 List per two seater

COM 5.20 yds

0.75 yd COM per single seat / 1.10 yd COM per single back / .5 yd COM per panel

MODEL	COM	GR 1	GR 2	GR 3	GR 4	GR 5	GR 6
<b>4612M-UL</b>	<b>3554</b>	<b>3899</b>	<b>4015</b>	<b>4243</b>	<b>4590</b>	<b>4846</b>	<b>5192</b>

Side panel – upholstered outside, laminated inside, half arms will be laminated

CAL 133, add \$408 List per two seater

COM 6.20 yds

0.75 yd COM per single seat / 1.10 yd COM per single back / 1.0 yd COM per panel

MODEL	COM	GR 1	GR 2	GR 3	GR 4	GR 5	GR 6
<b>4612M-UU</b>	<b>3708</b>	<b>4121</b>	<b>4261</b>	<b>4534</b>	<b>4947</b>	<b>5259</b>	<b>5671</b>

Side panel – upholstered, outside and inside

CAL 133, add \$565 List per two seater

Dimensions (inches)

seat H	18.0	seat W	48.0	arm H	26.0
total H	31.75	total W	54.0	depth	30.0

For KYDEX® arms add suffix K and \$612



**4612M**  
153 lbs

## DIGNITY2 Behavioral Health Series

### Standard Features

- Separate seat and back
- Meets seating durability test to 1000 lbs per three seater
- Arm caps available in wood, or polyurethane
- Laminate or upholstered side panels on inside and outside of arm in various combinations
- Upholstered side panels can match or contrast seat/back
- Select from 15 standard laminates or choose any standard Wilsonart, Nevamar, Formica, Arborite and Pionite matte finish laminates for no extra charge.
- Sculpted steel leg in any Spectone finish
- No protruding legs or hardware
- Tamper proof fastenings
- Non-removable steel leveling glides
- Ships assembled, 1/carton 15 cu ft

Contact Spec Customer Service to railroad fabrics (specify repeat info and yardage requirement will be provided) and for repeats greater than 5" x 5"

### Three Seater with half arms

COM 5.55 yds

0.75 yd COM per single seat / 1.10 yd COM per single back

MODEL	COM	GR 1	GR 2	GR 3	GR 4	GR 5	GR 6
<b>4613M-LL</b>	<b>4861</b>	<b>5224</b>	<b>5348</b>	<b>5587</b>	<b>5949</b>	<b>6216</b>	<b>6579</b>

Side panel – laminated, outside and inside

CAL 133, add \$457 List per three seater

COM 7.55 yds

0.75 yd COM per single seat / 1.10 yd COM per single back / .5 yd COM per panel

MODEL	COM	GR 1	GR 2	GR 3	GR 4	GR 5	GR 6
<b>4613M-LU</b>	<b>5013</b>	<b>5514</b>	<b>5684</b>	<b>6017</b>	<b>6516</b>	<b>6886</b>	<b>7389</b>

Side panel – laminated outside, upholstered inside, half arms will be upholstered

CAL 133, add \$667 List per three seater

COM 7.55 yds

0.75 yd COM per single seat / 1.10 yd COM per single back / .5 yd COM per panel

MODEL	COM	GR 1	GR 2	GR 3	GR 4	GR 5	GR 6
<b>4613M-UL</b>	<b>5013</b>	<b>5514</b>	<b>5684</b>	<b>6017</b>	<b>6516</b>	<b>6886</b>	<b>7389</b>

Side panel – upholstered outside, laminated inside, half arms will be laminated

CAL 133, add \$561 List per three seater

COM 8.55 yds

0.75 yd COM per single seat / 1.10 yd COM per single back / 1.0 yd COM per panel

MODEL	COM	GR 1	GR 2	GR 3	GR 4	GR 5	GR 6
<b>4613M-UU</b>	<b>5166</b>	<b>5736</b>	<b>5929</b>	<b>6305</b>	<b>6875</b>	<b>7295</b>	<b>7867</b>

Side panel – upholstered, outside and inside

CAL 133, add \$769 List per three seater

Dimensions (inches)

seat H	18.0	seat W	75.0	arm H	26.0
total H	31.75	total W	80.5	depth	30.0

For KYDEX® arms add suffix K and \$816

### Options

- Polyurethane arm caps available in Black (B) or Taupe RAL 7006 (T) or Sterling Grey (G)
- For wood arm caps, select from 9 standard stains, or stain-to-match for no extra charge
- KYDEX® end and polyurethane middle arm caps available in Black (B), Taupe RAL 7006 (T), or Sterling Grey (G).
- Thermofoil side panels on inside and outside of arm, call Customer Service for pricing and finishes
- Add up to 20 lbs of additional weight per seat, add \$192 List per seat
- Four white nylon caps can be added to prevent rust in areas with frequent cleaning/mopping. Add \$20 List
- Non-standard laminates, contact Spec for pricing
- Antibacterial and antimicrobial fabrics available
- Floor mounting straps available, call Customer Service
- Connecting and freestanding tables
- CAL 133
- Elimination of separated seat and back available with either solid or perforated seat pan, call Customer Service



**4613M**  
209 lbs

## DIGNITY2 Behavioral Health Series

### Standard Features

- Tamper proof fastenings

To order full panel side panels, add ZC-LL, or ZC-U to model number, e.g. 4601M-ZC-LL

To order wall-saving side panels, add WS-LL or WS-U to the model number, e.g. 4601M-WS-U

Pricing is for entire chair (2 end side panels).

Contact Spec Customer Service to railroad fabrics (specify repeat info and yardage requirement will be provided) and for repeats greater than 5" x 5"

### Options

- Thermofoil side panels on inside and outside of arm, call Customer Service for pricing and finishes
- Floor mounting straps available, call Customer Service

### Extended Side Panels

#### Laminate Panels Inside & Outside

MODEL	LIST
<b>ZC-LL</b>	<b>112</b>

#### Laminate & Upholstered Combination Panels

COM 0.5 yd per panel

MODEL	COM	GR 1	GR 2	GR 3	GR 4	GR 5	GR 6
<b>ZC-LU</b>	<b>112</b>	<b>127</b>	<b>131</b>	<b>137</b>	<b>150</b>	<b>160</b>	<b>174</b>
<b>ZC-UL</b>	<b>112</b>	<b>127</b>	<b>131</b>	<b>137</b>	<b>150</b>	<b>160</b>	<b>174</b>

#### Fully Upholstered Panels

COM 1.5 yd per panel

MODEL	COM	GR 1	GR 2	GR 3	GR 4	GR 5	GR 6
<b>ZC-U</b>	<b>112</b>	<b>127</b>	<b>131</b>	<b>137</b>	<b>150</b>	<b>160</b>	<b>174</b>



Side panel extended to floor

### Wall-Saving Side Panels

#### Laminate Panels Inside & Outside

MODEL	LIST
<b>WS-LL</b>	<b>180</b>

#### Laminate & Upholstered Combination Panels

COM 1.0 yd per panel

MODEL	COM	GR 1	GR 2	GR 3	GR 4	GR 5	GR 6
<b>WS-LU</b>	<b>180</b>	<b>354</b>	<b>402</b>	<b>483</b>	<b>627</b>	<b>730</b>	<b>835</b>
<b>WS-UL</b>	<b>180</b>	<b>354</b>	<b>402</b>	<b>483</b>	<b>627</b>	<b>730</b>	<b>835</b>

#### Fully Upholstered Panels

COM 2.0 yd per panel

MODEL	COM	GR 1	GR 2	GR 3	GR 4	GR 5	GR 6
<b>WS-U</b>	<b>180</b>	<b>354</b>	<b>402</b>	<b>483</b>	<b>627</b>	<b>730</b>	<b>835</b>



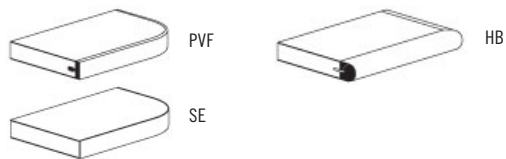
Wall-saving side panels

## DIGNITY2 Behavioral Health Series

### Standard Features

- Tops in laminate or veneer
- Select from 15 standard laminates or choose any standard Wilsonart, Nevamar, Formica, Arborite and Pionite matte finish laminates for no extra charge.
- Laminate tops with PVC Flat (PVF), Self Edge (SE), or hardwood (HB) edge
- 9 standard veneer and hardwood edge stains. Stain-to-match available for no extra charge.
- Tops utilize NU Green earth friendly core
- 18" height
- Non-removable steel leveling glides

*Radius Corner Tables are recommended for open areas*



### Options

- Additional weight can be added, contact factory
- Non-standard laminates, contact Spec for pricing
- Floor mounting straps available, call Customer Service

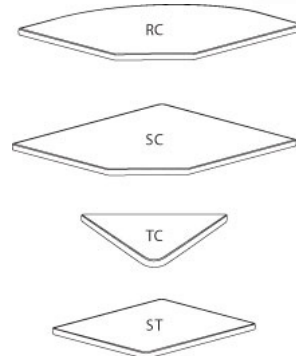
### Freestanding Lounge Tables

Model	Laminate PVF/SE Edge	Laminate HB Edge	Veneer HB Edge	Weight	Cu.Ft.
DIGN2 - 24 x 24 SQ	1547	1796	1842	93	7.2
DIGN2 - 30 x 30 SQ	1744	1923	1987	104	13.5
DIGN2 - 36 x 36 SQ	1905	2186	2264	117	18
DIGN2 - 42 x 42 SQ	2314	2723	2847	133	24.5
DIGN2 - 48 x 48 SQ	2563	2921	3055	150	32
DIGN2 - 24 DIA	1510	1965	2012	90	7.2
DIGN2 - 30 DIA	1702	2147	2211	99	13.5
DIGN2 - 36 DIA	1879	2532	2642	109	18
DIGN2 - 42 DIA	2299	3026	3181	123	24.5
DIGN2 - 48 DIA	2378	3359	3529	137	32



### Corner and Spacer Connecting Tables

Model	Laminate PVF/SE	Laminate HB Edge	Veneer HB Edge	Weight	Cu.Ft.
DIGN2RC - 28 x 28 <i>Radius Corner Table</i>	892	1119	1382	31	2
DIGN2SC - 28 x 28 <i>Square Corner Table</i>	892	1119	1382	32	2
DIGN2TC - 45 degree <i>Corner Table</i>	892	1119	1382	26	2
DIGN2ST - 21 x 24 <i>Spacer Table</i>	687	935	1128	27	2



**Dignity2 seating is available connected as 1, 2 and 3 seaters, with or without arms between, with corner or spacer tables. Above pricing includes connector bars.**



## DIGNITY2 Behavioral Health Series

### Standard Features

- Black finish only
- 6" soft wheel casters
- Standard Dolly holds 1 single seat chair
- Ships 1/carton, 17 cu. ft.
- Ships assembled



### Dignity2 - Dolly

Description	Model	Price	Weight
Single Seat Dolly	<b>DIGN-99</b>	<b>705</b>	<b>12lb</b>

#### Dimensions (inches)

height	39.0
width	23.0
depth	30.0

