

MIDWAY Public Seating

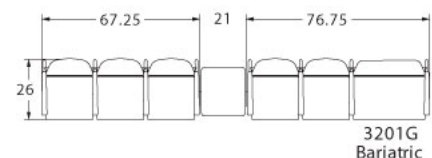
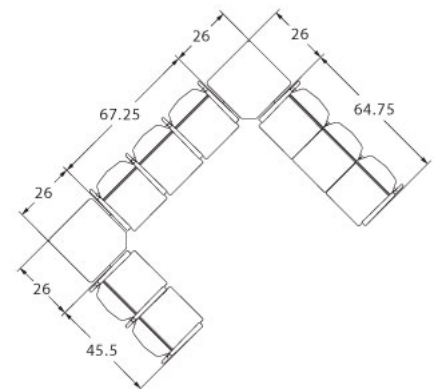
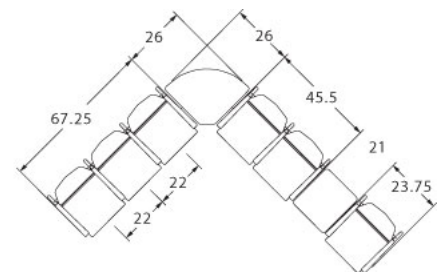
LAYOUTS



Description

- Spec's high durability public seating in a lighter scale allows specifiers to maximize space requirements.
- Your layout possibilities are unlimited with spacer, radius and corner tables – for both standard and bariatric seating in virtually any combination.
- Bariatric seating is a 30" wide seat and is load tested to 750 lbs. Cannot be connected to other bariatric seats.
- 20.5" seat width is standard.
- Choice of polyurethane or wood arms which are replaceable in the field.
- All models offer a choice of no center arms, half arms or full arms to the floor.
- 1.25" diameter wall-saving frame is standard to protect both wall and fabric.
- Separate seat and back provide exceptional comfort and ease of maintenance.
- Please send a drawing of the configuration you require with your order.
- Optional floor mounting glides available.
- For fabrics you wish railroaded or repeats larger than 5" x 5", please contact the factory with repeat information and yardage requirement will be provided.

LAYOUTS AND DIMENSIONS



MIDWAY Public Seating



PRODUCT CODE

3212U

Series

32 : Midway

Arm/Other

0 : Outside Arms

1 : Half Arms

2 : Full Arms

3 : Easy Access Hip Chair

Seats

1 : Single Seat

2 : Two-Seat

3 : Three-Seat

Chair Type

U : Mid Back

H : Highback

G : Bariatric

GH : Highback Bariatric

OPTIONS

ARM



Wood



Polyurethane

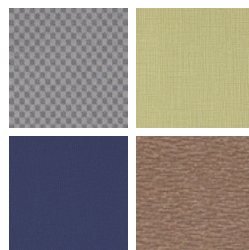
FINISHES

FRAME



Select from one of our 76 standard Spectone colors

FABRIC



Select fabrics from one of our textile partners

ARMS



Black

Sterling Grey

Taupe

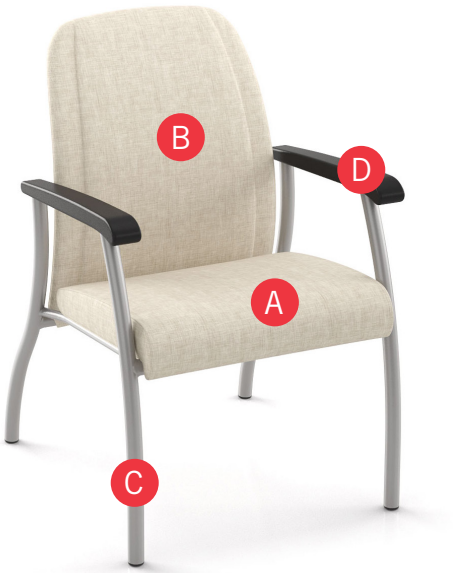
Select from one of our 9 standard wood stains or stain-to-match for no extra charge

See Spectone Card or specfurniture.com/tools-and-resources/product-resources/finishes for a complete list of finish options and colors.



MIDWAY Public Seating

HOW TO ORDER



Specify Model

- A Specify Fabric - Seat¹
Manufacturer, Pattern Name, Color
- B Specify Fabric - Back¹
Manufacturer, Pattern Name, Color
- C Specify Frame Finish
- D Specify Arm Type and Color

Optional: Flex Back, CAL 133, Moisture Barrier, Connecting and Freestanding Tables, Ottoman, Vinyl Headrest Insert

¹ When multiple fabrics are specified on two and three seat chairs, please provide a drawing and legend for fabric placement.

Model	Fabric - Seat	Fabric - Back	Frame Finish	Arm Type and Color
3201U	Momentum, Beeline, Canvas	Momentum, Beeline, Canvas	Silver	Polyurethane, Black

MIDWAY Public Seating

Single Seater with arms

Standard Features

- Separate seat and back
- Meets seating durability test to 500 lbs per chair
- Polyurethane arms or wood arms
- Fully welded 1.25" frame with glides
- Frame in any Spectone color
- Velcro removable back covers
- Replaceable seats
- Specify connected layouts at the time of order for no extra charge
- Arms replaceable in the field
- Ships assembled
- Ships 1/carton 17 cu ft

Contact Spec™ Customer Service to railroad fabrics (specify repeat info and yardage requirement will be provided) and for repeats greater than 5" x 5"

Options

- Polyurethane arms available in Black, Sterling Grey or Taupe (RAL 7006)
- Wood arms in Natural Maple are available in any of 9 standard stains or stain-to-match for no extra charge
- For Flex back add suffix FB and \$216 List.
Note: Wall-saving frame is not available when Flex back is specified.
- Connecting bracket for on-site modular connections of freestanding chairs, add \$300 List per bracket
- Connected and freestanding tables
- Antibacterial and antimicrobial fabrics available
- Different fabric on seat and back for no extra charge
- CAL 133



Single Seater with arms

COM 1.75 yds

0.75 yd COM per single seat

1.0 yd COM per single back

MODEL	COM	GR 1	GR 2	GR 3	GR 4	GR 5	GR 6
3201U	1241	1382	1430	1522	1664	1773	1913

Dimensions (inches)

seat H	18.0	seat W	20.5	arm H	26.0
total H	36.0	total W	23.75	depth	26.0

CAL 133, add \$151 List per chair



3201U
30 lbs

MIDWAY Public Seating

Two and Three Seaters with outside arms

Standard Features

- Separate seat and back
- Meets seating durability test to 750 lbs per two seater, and to 1000 lbs per three seater
- Polyurethane arms or wood arms
- Fully welded 1.25" frame with glides
- Frame in any Spectone color
- Velcro removable back covers
- Replaceable seats
- Specify connected layouts at the time of order for no extra charge
- Arms replaceable in the field
- Ships assembled
- Ships 1/carton 28 cu ft (2 seater), 1/carton 42 cu ft (3 seater)

Options

- Polyurethane arms available in Black, Sterling Grey or Taupe (RAL 7006)
- Wood arms in Natural Maple are available in any of 9 standard stains or stain-to-match for no extra charge
- Connecting bracket for on-site modular connections of freestanding chairs, add \$300 List per bracket
- Connected and freestanding tables
- Antibacterial and antimicrobial fabrics available
- Different fabric on seat and back for no extra charge
- CAL 133

Contact Spec Customer Service to railroad fabrics (specify repeat info and yardage requirement will be provided) and for repeats greater than 5" x 5"



Two Seater with outside arms

COM 3.5 yds

0.75 yd COM per single seat

1.0 yd COM per single back

MODEL	COM	GR 1	GR 2	GR 3	GR 4	GR 5	GR 6
3202U	1984	2264	2358	2546	2830	3045	3327

Dimensions (inches)

seat H	18.0	seat W	20.5	arm H	26.0
total H	36.0	total W	44.25	depth	26.0

CAL 133, add \$302 List per two seater



3202U
56 lbs

Three Seater with outside arms

COM 5.25 yds

0.75 yd COM per single seat

1.0 yd COM per single back

MODEL	COM	GR 1	GR 2	GR 3	GR 4	GR 5	GR 6
3203U	2650	3075	3216	3498	3920	4243	4667

Dimensions (inches)

seat H	18.0	seat W	20.5	arm H	26.0
total H	36.0	total W	64.75	depth	26.0

CAL 133, add \$453 List per three seater



3203U
84 lbs

MIDWAY Public Seating

Two and Three Seaters with half arms

Standard Features

- Separate seat and back
- Meets seating durability test to 750 lbs per two seater, and to 1000 lbs per three seater
- Polyurethane arms or wood arms
- Fully welded 1.25" frame with glides
- Frame in any Spectone color
- Velcro removable back covers
- Replaceable seats
- Specify connected layouts at the time of order for no extra charge
- Arms replaceable in the field
- Ships assembled
- Ships 1/carton 28 cu ft (2 seater), 1/carton 42 cu ft (3 seater)

Options

- Polyurethane arms available in Black, Sterling Grey or Taupe (RAL 7006)
- Wood arms in Natural Maple are available in any of 9 standard stains or stain-to-match for no extra charge
- Connecting bracket for on-site modular connections of freestanding chairs, add \$300 List per bracket
- Connected and freestanding tables
- Antibacterial and antimicrobial fabrics available
- Different fabric on seat and back for no extra charge
- CAL 133

Contact Spec Customer Service to railroad fabrics (specify repeat info and yardage requirement will be provided) and for repeats greater than 5" x 5"



Two Seater with half arms

COM 3.5 yds

0.75 yd COM per single seat

1.0 yd COM per single back

MODEL	COM	GR 1	GR 2	GR 3	GR 4	GR 5	GR 6
3212U	2226	2508	2602	2794	3075	3292	3572

Dimensions (inches)

seat H	18.0	seat W	20.5	arm H	26.0
total H	36.0	total W	45.5	depth	26.0

CAL 133, add \$302 List per two seater



3212U
58 lbs

Three Seater with half arms

COM 5.25 yds

0.75 yd COM per single seat

1.0 yd COM per single back

MODEL	COM	GR 1	GR 2	GR 3	GR 4	GR 5	GR 6
3213U	3094	3518	3661	3941	4369	4688	5109

Dimensions (inches)

seat H	18.0	seat W	20.5	arm H	26.0
total H	36.0	total W	67.25	depth	26.0

CAL 133, add \$453 List per three seater



3213U
86 lbs

MIDWAY Public Seating

Two and Three Seaters with full arms

Standard Features

- Separate seat and back
- Meets seating durability test to 750 lbs per two seater, and to 1000 lbs per three seater
- Polyurethane arms or wood arms
- Fully welded 1.25" frame with glides
- Frame in any Spectone color
- Velcro removable back covers
- Replaceable seats
- Specify connected layouts at the time of order for no extra charge
- Arms replaceable in the field
- Ships assembled
- Ships 1/carton 28 cu ft (2 seater), 1/carton 42 cu ft (3 seater)

Options

- Polyurethane arms available in Black, Sterling Grey or Taupe (RAL 7006)
- Wood arms in Natural Maple are available in any of 9 standard stains or stain-to-match for no extra charge
- Connecting bracket for on-site modular connections of freestanding chairs, add \$300 List per bracket
- Connected and freestanding tables
- Antibacterial and antimicrobial fabrics available
- Different fabric on seat and back for no extra charge
- CAL 133

Contact Spec Customer Service to railroad fabrics (specify repeat info and yardage requirement will be provided) and for repeats greater than 5" x 5"



Two Seater with full arms

COM 3.5 yds

0.75 yd COM per single seat

1.0 yd COM per single back

MODEL	COM	GR 1	GR 2	GR 3	GR 4	GR 5	GR 6
3222U	2297	2579	2673	2863	3148	3362	3646

Dimensions (inches)

seat H	18.0	seat W	20.5	arm H	26.0
total H	36.0	total W	45.5	depth	26.0

CAL 133, add \$302 List per two seater



3222U
60 lbs

Three Seater with full arms

COM 5.25 yds

0.75 yd COM per single seat

1.0 yd COM per single back

MODEL	COM	GR 1	GR 2	GR 3	GR 4	GR 5	GR 6
3223U	3246	3668	3809	4092	4514	4838	5263

Dimensions (inches)

seat H	18.0	seat W	20.5	arm H	26.0
total H	36.0	total W	67.25	depth	26.0

CAL 133, add \$453 List per three seater



3223U
88 lbs

MIDWAY Public Seating

Bariatric Single Seater with arms

Standard Features

- Separate seat and back
- Meets seating durability test to 750 lbs per chair
- Polyurethane arms or wood arms
- Fully welded 1.25" frame with glides
- Frame in any Spectone color
- Velcro removable back covers
- Replaceable seats
- Specify connected layouts at the time of order for no extra charge
- Arms replaceable in the field
- Bariatric seating cannot connect to bariatric seating
- Ships assembled
- Bariatric ships 1/carton 22 cu ft

Contact Spec Customer Service to railroad fabrics (specify repeat info and yardage requirement will be provided) and for repeats greater than 5" x 5"

Options

- Polyurethane arms available in Black, Sterling Grey or Taupe (RAL 7006)
- Wood arms in Natural Maple are available in any of 9 standard stains or stain-to-match for no extra charge
- Connecting bracket for on-site modular connections of freestanding chairs, add \$300 List per bracket
- Connected and freestanding tables
- Antibacterial and antimicrobial fabrics available
- Different fabric on seat and back for no extra charge
- CAL 133

Bariatric Single Seater with arms

COM 2.55 yds

0.8 yd COM per single seat

1.75 yd COM per single back

MODEL	COM	GR 1	GR 2	GR 3	GR 4	GR 5	GR 6
3201G	1511	1706	1773	1899	2095	2243	2440

Dimensions (inches)

seat H	18.0	seat W	30.0	arm H	26.0
total H	36.0	total W	32.75	depth	26.0

CAL 133, add \$220 List per chair



3201G
38 lbs

MIDWAY Public Seating

Highback Single Seater with arms
Ottoman

Standard Features

- Separate seat and back
- Meets seating durability test to 500 lbs per highback chair
- Polyurethane arms or wood arms
- Fully welded 1.25" frame with glides
- Frame in any Spectone color
- Velcro removable back covers
- Replaceable seats
- Specify connected layouts at the time of order for no extra charge
- Arms replaceable in the field
- Ships assembled
- Ships 1/carton 19 cu ft
- Ottoman ships 1/carton 5 cu ft

Contact Spec Customer Service to railroad fabrics (specify repeat info and yardage requirement will be provided) and for repeats greater than 5" x 5"

Options

- Polyurethane arms available in Black, Sterling Grey or Taupe (RAL 7006)
- Wood arms in Natural Maple are available in any of 9 standard stains or stain-to-match for no extra charge
- For Flex back add suffix FB and \$216 List.
Note: Wall-saving frame is not available when Flex back is specified.
- Vinyl insert on top of the back, add \$53 List/seat back
- Connecting bracket for on-site modular connections of freestanding chairs, add \$300 List per bracket
- Connected and freestanding tables
- Antibacterial and antimicrobial fabrics available
- Different fabric on seat and back for no extra charge
- CAL 133

Highback Single Seater with arms

COM 1.85 yds
0.75 yd COM per single seat
1.1 yds COM per single back

MODEL	COM	GR 1	GR 2	GR 3	GR 4	GR 5	GR 6
3201H	1391	1527	1571	1660	1796	1896	2071

Dimensions (inches)

seat H	18.0	seat W	20.5	arm H	26.0
total H	46.0	total W	23.75	depth	25.0

CAL 133, add \$190 List per chair



3201H
32 lbs

Ottoman

0.5 yd COM per ottoman

MODEL	COM	GR 1	GR 2	GR 3	GR 4	GR 5	GR 6
3230F	498	542	558	586	632	667	725

Ottoman Dimensions (inches)

H	11.5	W	19.25	depth	12.25
---	------	---	-------	-------	-------

CAL 133, add \$54 List



3230F
12 lbs

MIDWAY Public Seating

Highback Bariatric Single Seater with arms

Standard Features

- Separate seat and back
- Meets seating durability test to 500 lbs per highback chair
- Polyurethane arms or wood arms
- Fully welded 1.25" frame with glides
- Frame in any Spectone color
- Velcro removable back covers
- Replaceable seats
- Specify connected layouts at the time of order for no extra charge
- Arms replaceable in the field
- Bariatric seating cannot connect to bariatric seating
- Ships assembled
- Bariatric Highback ships 1/carton 26 cu ft

Options

- Polyurethane arms available in Black, Sterling Grey or Taupe (RAL 7006)
- Wood arms in Natural Maple are available in any of 9 standard stains or stain-to-match for no extra charge
- Connecting bracket for on-site modular connections of freestanding chairs, add \$300 List per bracket
- Connected and freestanding tables
- Antibacterial and antimicrobial fabrics available
- Different fabric on seat and back for no extra charge
- CAL 133

Contact Spec Customer Service to railroad fabrics (specify repeat info and yardage requirement will be provided) and for repeats greater than 5" x 5"



Highback Bariatric Single Seater with arms

COM 3.0 yds

0.8 yd COM per single seat

2.2 yds COM per single back

MODEL	COM	GR 1	GR 2	GR 3	GR 4	GR 5	GR 6
3201GH	1661	1886	1962	2109	2336	2508	2783

Dimensions (inches)

seat H	18.0	seat W	30.0	arm H	26.0
total H	46.0	total W	32.75	depth	26.0

CAL 133, add \$274 List per chair



3201GH
40 lbs

MIDWAY Public Seating

Easy Access Hip Single Seater with arms

Standard Features

- Separate seat and back
- Meets seating durability test to 500 lbs per chair
- Polyurethane arms or wood arms
- Fully welded 1.25" frame with glides
- Frame in any Spectone color
- 24" seat height, no seat pitch (level)
- Footrest which assists entering/exiting chair
- Velcro removable back covers
- Replaceable seats
- Arms replaceable in the field
- Ships assembled
- Ships 1/carton 19 cu ft

Options

- Polyurethane arms available in Black, Sterling Grey or Taupe (RAL 7006)
- Wood arms in Natural Maple are available in any of 9 standard stains or stain-to-match for no extra charge
- Antibacterial and antimicrobial fabrics available
- Different fabric on seat and back for no extra charge
- CAL 133

Contact Spec Customer Service to railroad fabrics (specify repeat info and yardage requirement will be provided) and for repeats greater than 5" x 5"



Easy Access Hip Single Seater with arms

COM 1.75 yds

0.75 yd COM per single seat

1.0 yd COM per single back

MODEL	COM	GR 1	GR 2	GR 3	GR 4	GR 5	GR 6
3231	1377	1521	1569	1658	1803	1909	2050

Dimensions (inches)

seat H	24.0	seat W	20.5	arm H	32.0
total H	42.0	total W	23.75	depth	26.0

CAL 133, add \$151 List per chair



3231
37 lbs

MIDWAY Public Seating

Freestanding Lounge Tables

Corner and Spacer Connecting Tables

Standard Features

- Tops in laminate or veneer
- Select laminate tops from 15 standard laminates or choose any standard Wilsonart, Nevamar, Formica, Arborite and Pionite matte finish laminates for no extra charge.
- Freestanding lounge tables available with PVC Flat (PVF), 2mm (2MM), exposed Baltic Birch plywood (PF, PKNR) or hardwood (HB) edge
- Connecting table tops available with PVC Flat (PVF) edge, Self edge (SE) or hardwood (HB) edge
- 9 standard veneer and hardwood edge stains. Stain-to-match available for no extra charge.
- Frame in any Spectone color
- Tops utilize NU Green earth friendly core
- Glides
- 18" height

Options

- Non-standard laminates, contact Spec for pricing
- Custom size spacer tables for restricted spaces
- Other sizes may be available

Radius Corner Tables are recommended for open areas

Freestanding Lounge Tables

Model	Laminate PVF/SE/2MM	Laminate PF/PKNR/HB	Veneer HB	Weight	Cu.Ft.
32 - 24 x 24 SQ	863	1110	1307	28	7.2
32 - 24 x 48 RE	1067	1340	1616	48	18
32 - 30 x 30 SQ	998	1178	1387	43	13.5
32 - 24 DIA	825	1281	1540	26	7.2
32 - 30 DIA	957	1405	1672	40	13.5



Corner and Spacer Connecting Tables

Model	Laminate PVF/SE	Weight	Cu.Ft.
32RC - 26 x 26 <i>Radius Corner Table</i>	892	26	2
32SC - 26 x 26 <i>Square Corner Table</i>	892	26	2
32TC45 - 19 x 23 <i>45 degree Corner Table</i>	892	19	2
32ST - 19 x 21 <i>Spacer or End Table</i>	687	19	2

