

SNOWBALL 3 Public Seating



PRODUCT CODE

19 01

Series

19 : Snowball 3

Chair Type

01 : Four Point/Arms

11 : Four Point/No Arms

31 : Sled Base/Arms

41 : Sled Base/No Arms

04 : 22"/4-point/Arms

14 : 22"/4-Point/No Arms

03 : 26"/4-Point/Arms

44 : 22"/Sled/No Arms

43 : 26"/Sled/No Arms

02 : Casters/Arms

21 : Stool/Arms

51 : Stool/No Arms

24 : 22"/Stool/Arms

26 : 22"/Stool/No Arms

21E : Hip Chair

24E : 22" Hip Chair

OPTIONS

WALL-SAVING



DURASPEC SEAT



WOOD BACK OPTIONS



Cutout A



Cutout B



Cutout C



Cutout D



Cutout E

Custom
Engraving*Custom
Cutout*Custom
Decal*

*Custom engravings, cutouts and
decals are available. Please call
for pricing.

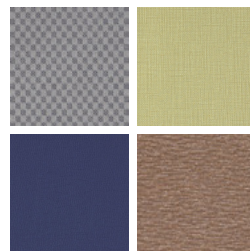
FINISHES

FRAME



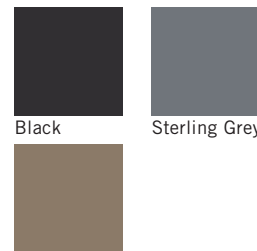
Select from one of our 76 standard Spectone colors

FABRIC



Select fabrics from one of our
textile partners

ARMS



Black

Sterling Grey

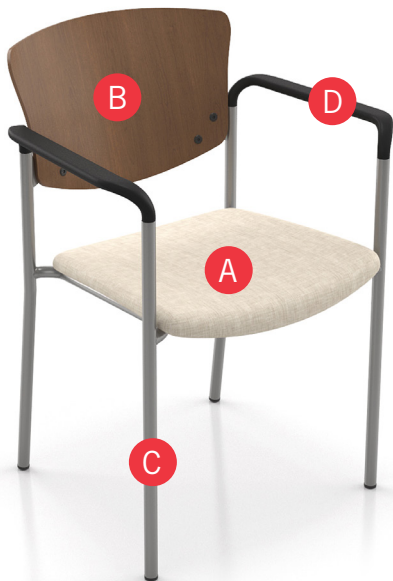
Taupe

See Spectone Card or specfurniture.com/tools-and-resources/product-resources/finishes for a complete list of finish options and colors.



SNOWBALL 3 Public Seating

HOW TO ORDER



Specify Model

- A Specify Fabric - Seat
Manufacturer, Pattern Name, Color
- B Specify Wood Stain - Back
Specify Back Design
- C Specify Frame Finish
- D Specify Polyurethane Arm Color

Optional: Wood Seat, Custom Back Design, CAL 133, Moisture Barrier, Wall-saving Frame, Connecting Bars, Tablet Arm, Wire Basket, DuraSpec Seat, Connecting Tables, Dolly

Restrictions may apply. See price list tables below for more information.



Model	Fabric - Seat	Wood Stain - Back, Back Design	Frame Finish	Polyurethane Arm Color
1901	Momentum, Beeline, Canvas	Studio Teak Stain, No Back Design	Silver	Black

SNOWBALL 3 Public Seating

Four-point and Sled Base

Standard Features

- 0.875" frame
- Meets seating durability test to 500 lbs per chair
- Upholstered seat and wood back
- Seat and/or back in Natural Maple in any of 9 standard stains or stain-to-match for no extra charge
- Choice of 5 back cut-outs
- Polyurethane arms available in Black (B), Sterling Grey (G) or Taupe RAL 7006 (T)
- Frame in any Spectone color
- Four-point stacks up to 6 high on dolly, 6 high on the floor
- Sled Base does not stack and ships 1 per carton
- Four-point ships 1/carton 11 cu ft, 2-4/carton 22 cu ft

Contact Spec Customer Service to railroad fabrics (specify repeat info and yardage requirement will be provided) and for repeats greater than 5" x 5"



Available on Spec 10 Day Program

Options

- Wood seat, add \$70 List to COM price
- Custom back cut-outs and engravings
- Wall-saving frame on Four-point only, add \$27 List
- Connecting bars for a structured reconfigurable layout, add \$102 List
- Antibacterial and antimicrobial fabrics available
- Different fabric on seat and back for no extra charge
- Tablet Arm available on Snowballs without arms
- CAL 133
- Other glides may be available for an upcharge - call Customer Service to inquire
- DuraSpec seat is available on 18"w and 22"w chairs only - call Customer Service for pricing



Optional wall-saving frame



Optional DuraSpec seat

Snowball 3 – Four-point

COM 0.5 yd

0.5 yd COM per single seat

MODEL	COM	GR 1	GR 2	GR 3	GR 4	GR 5	GR 6
1901	513	544	555	580	610	638	670
1911	513	544	555	580	610	638	670

Dimensions (inches)

seat H	18.0	seat W	18.0	arm H	26.0	total H	33.0
depth	21.5	total W	23.5	total W (no arms)	20.1		

CAL 133, add \$39 List

1" extra seat foam, specify and add \$18 List



1901
With arms
18 lbs



1911
Without arms
17 lbs

Snowball 3 – Sled Base

COM 0.5 yd

0.5 yd COM per single seat

MODEL	COM	GR 1	GR 2	GR 3	GR 4	GR 5	GR 6
1931	528	561	575	595	629	653	687
1941	528	561	575	595	629	653	687

Dimensions (inches)

seat H	18.0	seat W	18.0	arm H	26.0	total H	33.0
depth	21.5	total W	23.5	total W (no arms)	20.1		

CAL 133, add \$39 List

1" extra seat foam, specify and add \$18 List



1931
With arms
21 lbs



1941
Without arms
20 lbs

SNOWBALL 3 Public Seating

Midsize and Bariatric – Four-point

Standard Features

- 0.875" frame
- Meets seating durability test to 500 lbs per chair
- Upholstered seat and wood back
- Seat and/or back in Natural Maple in any of 9 standard stains or stain-to-match for no extra charge
- Choice of 5 back cut-outs
- Polyurethane arms available in Black (B), Sterling Grey (G) or Taupe RAL 7006 (T)
- Frame in any Spectone color
- Four-point midsize stacks up to 6 high on dolly, 4 high on the floor; Four-point bariatric stacks up to 4 high on dolly, 4 high on the floor
- Ships 1-3/carton 21.24 cu ft for Midsize and 1-3/ carton 24.17 cu ft for Bariatric

Contact Spec Customer Service to railroad fabrics (specify repeat info and yardage requirement will be provided) and for repeats greater than 5" x 5"



Available on Spec 10 Day Program

Options

- Custom back cut-outs and engravings
- Wall-saving frame, add \$27 List
- Connecting bars for a structured reconfigurable layout, add \$102 List
- Antibacterial and antimicrobial fabrics available
- Different fabric on seat and back for no extra charge
- CAL 133
- Other glides may be available for an upcharge - call Customer Service to inquire
- DuraSpec seat is available on 18"w and 22"w chairs only - call Customer Service for pricing



Optional wall-saving frame



Optional DuraSpec seat

Snowball 3 – Midsize – Four-point

COM 0.75 yd
0.75 yd COM per single seat

MODEL	COM	GR 1	GR 2	GR 3	GR 4	GR 5	GR 6
1904	552	606	623	656	711	753	805
1914	552	606	623	656	711	753	805

*1914 Not Available on 10 Day Program

Dimensions (inches)

seat H	18.0	seat W	22.0	arm H	26.0	total H	33.0
depth	22.0	total W	26.9	total W (no arms)	24.0		

CAL 133, add \$53 List
1" extra seat foam, specify and add \$28 List



1904
With arms
20 lbs

1914
Without arms
19 lbs

*Not Available on
10 Day Program

Snowball 3 – Bariatric – Four-point

COM 1.0 yd
1.0 yd COM per single seat

MODEL	COM	GR 1	GR 2	GR 3	GR 4	GR 5	GR 6
1903	693	746	767	798	851	892	946

Dimensions (inches)

seat H	18.0	seat W	26.0	arm H	26.0
total H	33.0	total W	31.0	depth	22.0

CAL 133, add \$53 List
1" extra seat foam, specify and add \$39 List



1903
With arms
25 lbs

SNOWBALL 3 Public Seating

Midsize and Bariatric – Sled Base

Standard Features

- 0.875" frame
- Meets seating durability test to 500 lbs per chair
- Upholstered seat and wood back
- Seat and/or back in Natural Maple in any of 9 standard stains or stain-to-match for no extra charge
- Choice of 5 back cut-outs
- Seat and back upholstered
- Frame in any Spectone color
- Does not stack
- Ships 1/carton 21 cu ft

Contact Spec Customer Service to railroad fabrics (specify repeat info and yardage requirement will be provided) and for repeats greater than 5" x 5"

Options

- Custom back cut-outs and engravings
- Connecting bars for a structured reconfigurable layout, add \$102 List
- Antibacterial and antimicrobial fabrics available
- Different fabric on seat and back for no extra charge
- Tablet Arm available on Snowballs without arms
- CAL 133
- Other glides may be available for an upcharge - call Customer Service to inquire
- DuraSpec seat is available on 18"w and 22"w chairs only - call Customer Service for pricing



Optional
DuraSpec
seat

Snowball 3 – Midsize – Sled Base

COM 0.75 yd
0.75 yd COM per single seat

MODEL	COM	GR 1	GR 2	GR 3	GR 4	GR 5	GR 6
1944	594	646	666	700	754	794	847

Dimensions (inches)

seat H	18.0	seat W	22.0	arm H	N/A
total H	33.0	total W	24.0	depth	22.0

CAL 133, add \$53 List
1" extra seat foam, specify and add \$28 List



1944
Without arms
21 lbs

Snowball 3 – Bariatric – Sled Base

COM 1.0 yd
1.0 yd COM per single seat

MODEL	COM	GR 1	GR 2	GR 3	GR 4	GR 5	GR 6
1943	733	789	806	841	893	934	988

Dimensions (inches)

seat H	18.0	seat W	26.0	arm H	N/A
total H	33.0	total W	28.0	depth	22.0

CAL 133, add \$53 List
1" extra seat foam, specify and add \$39 List



1943
Without arms
26 lbs

SNOWBALL 3 Public Seating

Casters

Standard Features

- 0.875" frame
- Meets seating durability test to 500 lbs per chair
- Upholstered seat and wood back
- Seat and/or back in Natural Maple in any of 9 standard stains or stain-to-match for no extra charge
- Choice of 5 back cut-outs
- Seat and back upholstered
- Polyurethane arms available in Black (B), Sterling Grey (G) or Taupe RAL 7006 (T)
- Frame in any Spectone color
- Black non-locking casters
- Stacks up to 6 high on dolly, 6 high on the floor
- Ships 1/carton 11 cu ft, 2-3/carton 22 cu ft

Contact Spec Customer Service to railroad fabrics (specify repeat info and yardage requirement will be provided) and for repeats greater than 5" x 5"

Options

- Wood seat, add \$70 List to COM price
- Custom back cut-outs and engravings
- Antibacterial and antimicrobial fabrics available
- Different fabric on seat and back for no extra charge
- Armless and sled base versions not available
- CAL 133
- DuraSpec seat is available on 18"w and 22"w chairs only - call Customer Service for pricing



Optional
DuraSpec
seat

Snowball 3 – Casters

COM 0.5 yd
0.5 yd COM per single seat

MODEL	COM	GR 1	GR 2	GR 3	GR 4	GR 5	GR 6
1902	664	700	711	730	767	791	822
Dimensions (inches)							
seat H	18.0	seat W	18.0	arm H	26.0	armless W	20.125
total H	33.0	total W	23.5	depth	21.5		

CAL 133, add \$39 List
1" extra seat foam, specify and add \$18 List



1902
With arms
19 lbs

SNOWBALL 3 Public Seating

Stools

Standard Features

- 0.875" frame
- Meets seating durability test to 500 lbs per chair
- Upholstered seat and wood back
- Seat and/or back in Natural Maple in any of 9 standard stains or stain-to-match for no extra charge
- Choice of 5 back cut-outs
- Seat and back upholstered
- Polyurethane arms available in Black (B), Sterling Grey (G) or Taupe RAL 7006 (T)
- Frame in any Spectone color
- Does not stack
- Ships 1/carton 17 cu ft

Contact Spec Customer Service to railroad fabrics (specify repeat info and yardage requirement will be provided) and for repeats greater than 5" x 5"

Options

- Wood seat, add \$70 List to COM price
- Custom back cut-outs and engravings
- Antibacterial and antimicrobial fabrics available
- Different fabric on seat and back for no extra charge
- Casters, sled base not available
- CAL 133
- Other glides may be available for an upcharge - call Customer Service to inquire
- DuraSpec seat is available on 18"w and 22"w chairs only - call Customer Service for pricing



Optional
DuraSpec
seat

Snowball 3 – Stool

COM 0.5 yd
0.5 yd COM per single seat

MODEL	COM	GR 1	GR 2	GR 3	GR 4	GR 5	GR 6
1921	648	679	691	714	746	772	805
1951	648	679	691	714	746	772	805

Dimensions (inches)

seat H	28.0	seat W	18.0	arm H	36.0	total H	43.5
depth	21.5	total W	23.5	total W (no arms)	20.1		

CAL 133, add \$39 List
1" extra seat foam, specify and add \$18 List



1921
With arms
21 lbs



1951
Without arms
20 lbs

Snowball 3 – Midsize Stools

COM 0.75 yd
0.75 yd COM per single seat

MODEL	COM	GR 1	GR 2	GR 3	GR 4	GR 5	GR 6
1924	732	784	805	837	891	933	986
1926	732	784	805	837	891	933	986

Dimensions (inches)

seat H	28.0	seat W	22.0	arm H	36.0	total H	43.5
depth	22.0	total W	26.9	total W (no arms)	24.0		

CAL 133, add \$53 List
1" extra seat foam, specify and add \$28 List



1924
With arms
25 lbs



1926
Without arms
24 lbs

SNOWBALL 3 Public Seating

Easy Access Hip Single Seater

Standard Features

- 0.875" frame
- Meets seating durability test to 500 lbs per chair
- Seat and back upholstered
- Polyurethane arms available in Black (B), Sterling Grey (G) or Taupe RAL 7006 (T)
- Frame in any Spectone color
- Does not stack
- Ships 1/carton 19 cu ft

Contact Spec Customer Service to railroad fabrics (specify repeat info and yardage requirement will be provided) and for repeats greater than 5" x 5"

Options

- Antibacterial and antimicrobial fabrics available
- Different fabric on seat and back for no extra charge
- Casters, sled base not available
- CAL 133
- Other glides may be available for an upcharge - call Customer Service to inquire
- DuraSpec seat is available on 18"w and 22"w chairs only - call Customer Service for pricing



Optional
DuraSpec
seat

Snowball 3 – Easy Access Hip Chair

COM 0.5 yd

0.5 yd COM per single seat

MODEL	COM	GR 1	GR 2	GR 3	GR 4	GR 5	GR 6
1921E	703	732	745	768	799	825	858

Dimensions (inches)

seat H	24.0	seat W	18.0	arm H	32.0
total H	38.5	total W	23.5	depth	31.0

CAL 133, add \$39 List

1" extra seat foam, specify and add \$18 List



1921E
With arms
30 lbs

Snowball 3 – Midsize Easy Access Hip Single Seater

COM 0.75 yd

0.75 yd COM per single seat

MODEL	COM	GR 1	GR 2	GR 3	GR 4	GR 5	GR 6
1924E	793	845	864	897	950	993	1045

Dimensions (inches)

seat H	24.0	seat W	22.0	arm H	32.0
total H	38.5	total W	26.9	depth	31.0

CAL 133, add \$53 List

1" extra seat foam, specify and add \$28 List



1924E
With arms
32 lbs

SNOWBALL 3 Public Seating

Dolly

Standard Features

- Black finish only
- 2" black swivel casters
- Standard Dolly stacks 6 chairs
- Midsize Dolly stacks 6 chairs
- Bariatric Dolly stacks 4 chairs
- Ships 1/carton 17 cu ft

Options

- Please specify if Dolly is for chairs with wall-saving frame



Standard and Midsize available on
Spec 10 Day Program



Snowball 3 – Dolly

DESCRIPTION	MODEL	PRICE
Standard	1899	436
22" Midsize	1899M	626
26" Bariatric	1899G	626

Dimensions (inches)

Standard		Midsize / Bariatric	
height	36.5	height	36.5
width	21.0	width	23.0
depth	31.0	depth	42.0



**1899
Standard**
18 lbs



**1899G/1899M
Midsize/Bariatric**
24 lbs

SNOWBALL 3 Public Seating

Connected and Tables

To order connected Snowballs

- Select and price the Snowballs required for your configuration
- Select and price the corner, spacer and end tables required
- Add Snowball connecting bars (between chairs only). Do not add connecting bars for tables (they are part of the table)
- Send a drawing with your order or call Spec for assistance

Snowball Tables

- Table top is 3/4" thick
- Self Edge (SE), PVC Flat (PVF) and 2mm (2MM) edges available. PVF and 2MM Bio edges available in 38 solid colors. 2mm PVC edge available in wood grain to match 9 standard stains.
- Select laminate tops from 15 standard laminates or choose any standard Wilsonart, Nevamar, Formica, Arborite and Pionite matte finish laminates for no extra charge.

Connecting bars and tables can be retrofitted, allowing you to change configurations later or create new configurations from your present Snowballs






Connecting bars can be added to any Snowball chair, including Bariatric and Midsize

Connecting bars and table frame bars are finished in the same color as the color of the chair frames

Connecting bars are fastened to the underside of the Snowball chair frame at the front and back



Snowball 3 – Connected and Tables

					
DESCRIPTION	Corner Table	Spacer Table	Mini Spacer Table	End Table*	Connecting Bars
MODEL	18RC	18ST	18MT	18ET	18CON
DIMENSIONS (inches)	25 x 25	17 x 17	4.5 x 14.5	17 x 17	N/A
PRICE	421	288	173	300	102

*End table is handed, provide layout

SNOWBALL 3 Public Seating

Tablet Arms and Wire Basket

Tablet Arm

- Fits any Snowball, freestanding or within a configuration
- Standard or laptop size available
- Right and left handed versions (defined when sitting in chair), add TR for right handed or TL for left handed to model number
- Laminated on both sides, standard in Wilsonart Dove Grey D-92-60 with flat black PVC edge. For other laminate please contact the factory for pricing
- Tablet constructed of 3/4" NU Green earth friendly core
- Snowball with Tablet Arm is standard with no arm on opposite side
- Add price of Tablet Arm to your Snowball selection

Note: We do not recommend stacking Snowballs that have tablet arms

Wire Basket

- Add to any 18" wide Snowball
- Black
- Removable



Snowball 3 – Tablet Arms and Wire Basket

DESCRIPTION

MODEL

PRICE

Dimensions (inches)



Standard Tablet Arm

TR (right) or TL (left)

295

height 27.5
width 12.75
total W 24.5
length 24.0
tablet extends 6" from seat



Laptop Tablet Arm

LTR (right) or LTL (left)

333

height 27.5
width 16.0
total W 24.5
length 24.75
tablet extends 7" from seat



Wire Basket

WB

Call For Pricing

SNOWBALL 3 Public Seating

Wood Back Options

Wood Back

- Backs standard in Natural maple in any of 9 standard stains or stain-to-match for no extra charge
- On the 10 Day Program; only back design A is available in Cherry stain or Natural Maple stain

Custom Wood Back Cut-out

- A one time set up charge of \$333 list applies
- Design should fit within a 5" x 5" space (due to contour of back)
- Shape will be mirrored from the front of the chair

Pick a back design and add suffix A-E following the model number, e.g. 1901BA (Snowball 3 with black arms and back design A)

Custom Wood Back Engraving and Vinyl Decals

- For quantities over 25, add an upcharge of \$68 List/chair
- For quantities under 25, add an upcharge of \$68 List/chair, plus a \$333 List set up fee **per order**

Engravings: Please note that inconsistencies in the wood may show after the engraving is completed. When choosing the raw wood, we take extra care to select backs that are similar in graining and color, however, no guarantee can be made. We recommend that an engraved image be stained a darker color to hide possible inconsistencies.

Snowball 3 – Wood Back Designs



Wood Back Design "A"



Wood Back Design "B"



Wood Back Design "C"



Wood Back Design "D"



Wood Back Design "E"

Snowball 3 – Custom Wood Back Cut-out



Snowball 3 – Custom Wood Back Engraving



Snowball 3 – Custom Wood Back Vinyl Decals



Available up to 4"x4"
Maximum of 4 colors per decal
Vector based files required



SNOWBALL 3 Public Seating

10 Day Program

Standard Features

- Black polyurethane arms
- Meets seating durability test to 500 lbs per chair
- Upholstered seat and wood back
- Back in Wild Cherry or Fusion Maple stains
- Back cut-out A
- Black or silver frame finish
- See 10 Day Quickship price list or Spec website for the selection of quick ship textiles
- 10 Day Program quantity limit of 20 chairs per order

Options

- Snowball Dolly stacks Snowballs up to 6 high



Wood Back Design "A"

For information on the 10 Day Program guarantee and terms and conditions, visit specfurniture.com/terms-conditions.

Snowball 3

COM 0.5 yd
0.5 yd COM per single seat

MODEL	COM	GR 1	GR 2	GR 3
1901	513	544	555	580
1911	513	544	555	580
1904	552	606	623	656

Dimensions 1901/1911 (inches)

seat H	18.0	seat W	18.0	arm H	26.0	total H	33.0
depth	21.5	total W	23.5	total W (no arms)	20.1		

Dimensions 1904 (inches)

seat H	18.0	seat W	22.0	arm H	26.0	total H	33.0
depth	22.0	total W	26.9				



1901
With arms
18 lbs



1911
Without arms
17 lbs



1904
With arms
20 lbs

Snowball 3 – Dolly

DESCRIPTION	MODEL	PRICE
Standard	1899	436
22" Midsize	1899M	626

Dimensions (inches)

Standard	Midsize
height 36.5	height 36.5
width 21.0	width 23.0
depth 31.0	depth 42.0



1899
Standard
18 lbs



1899M
Midsize
24 lbs