

BEHAVIORAL HEALTH & HEAVY DUTY Specialty Seating



PRODUCT CODE

4201M HD

Product Code

Specification
HD: Heavy Duty*



*The code for our heavy duty seating options featured in the pages below is the same as a regular model of the chair you are specifying. By adding the letters "HD" at the end of the product code, it lets us know the product is intended for a behavioral health environment and the features below will automatically be specified.

FEATURES

Tamper-Proof



Weighted



LOCTITE®-secured Glides



Secured Zippers



Springless Seat Cushion



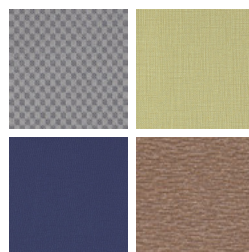
FINISHES

FRAME



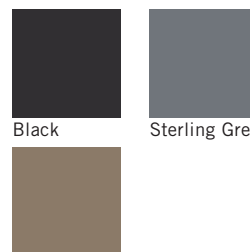
Select from one of our 76 standard Spectone colors

FABRIC



Select fabrics from one of our textile partners

ARMS



Taupe



BEHAVIORAL HEALTH & HEAVY DUTY Specialty Seating

CALVIN HD

Standard Features

- Separate seat and back
- Meets seating durability test to 500 lbs per single seat chair, and to 750 lbs per single seat bariatric chair
- Polyurethane arms
- Fully welded
- Added weight, Sled base
- Frame in any Spectone color
- Injection molded plastic glides, secured with CA glue
- Tamperproof hardware
- Ships assembled
- Ships 1/carton 15 cu ft, bariatric ships 1/carton 20 cu ft

Options

- Polyurethane arms are available in Black, Sterling Grey and Taupe (RAL 7006)
- Corian arms available in Antarctica, Bisque, Cameo White, Glacier White, or Linen. Custom colors available, contact Spec for pricing
- CAL 133

Contact Spec Customer Service to railroad fabrics (specify repeat info and yardage requirement will be provided) and for repeats greater than 5" x 5"



Calvin HD Single Seater with arms

COM 1.75 yds
 0.75 yd COM per single seat
 1.0 yd COM per single back

MODEL	COM	GR 1	GR 2	GR 3	GR 4	GR 5	GR 6
8101MHD	1817	1948	1987	2080	2213	2314	2449

Dimensions (inches)

seat H	18.0	seat W	21.0	arm H	25.0
total H	33.75	total W	25.0	depth	26.0

CAL 133, add \$151 List per chair
 For Corian arms add suffix C and \$332



8101MHD
64 lbs

Calvin HD Bariatric with arms

COM 3.0 yds
 1.5 yd COM per single seat
 1.5 yd COM per single back

MODEL	COM	GR 1	GR 2	GR 3	GR 4	GR 5	GR 6
8101GHD	2226	2451	2523	2676	2905	3079	3312

Dimensions (inches)

seat H	18.0	seat W	30.0	arm H	25.0
total H	33.75	total W	34.0	depth	26.0

CAL 133, add \$190 List per chair
 For Corian arms add suffix C and \$332



8101GHD
74 lbs



BEHAVIORAL HEALTH & HEAVY DUTY Specialty Seating

COMPANION HD

Standard Features

- Separate seat and back
- Meets seating durability test to 500 lbs per chair
- Polyurethane arms
- Fully welded 1.75" frame
- Added weight, Sled base
- Frame in any Spectone color
- Steel glides secured with LOCTITE®
- Tamperproof hardware
- Zippered covers glued shut, pulls removed
- Ships assembled
- Medium Back ships 1/carton 15 cu ft

Options

- Polyurethane arms are available in Black, Sterling Grey and Taupe (RAL 7006)
- Floor mounting glides, add \$57 List/chair
- CAL 133

Contact Spec™ Customer Service to railroad fabrics (specify repeat info and yardage requirement will be provided) and for repeats greater than 5" x 5"



Companion HD Medium Back armless – Sled Base

COM 2.0 yds
1.0 yd COM per single seat
1.0 yd COM per single back

MODEL	COM	GR 1	GR 2	GR 3	GR 4	GR 5	GR 6
4101MHD	1628	1773	1819	1918	2062	2172	2319

Dimensions (inches)

seat H	18.0	seat W	21.0				
total H	32.5	total W	25.0	depth	27.0		

CAL 133, add \$136 List per chair



4101MHD
65 lbs

Companion HD Medium Back with arms – Sled Base

COM 2.0 yds
1.0 yd COM per single seat
1.0 yd COM per single back

MODEL	COM	GR 1	GR 2	GR 3	GR 4	GR 5	GR 6
4201MHD	1909	2053	2101	2201	2344	2452	2600

For steel arms add suffix S and \$84

Dimensions (inches)

seat H	18.0	seat W	21.0	arm H	27.0		
total H	32.5	total W	26.0	depth	27.0		

CAL 133, add \$136 List per chair



4201MHD
65 lbs



BEHAVIORAL HEALTH & HEAVY DUTY Specialty Seating

COMPANION HD

Standard Features

- Separate seat and back
- Meets seating durability test to 500 lbs per single seat chair, and to 750 lbs per single seat bariatric chair
- Polyurethane arms
- Fully welded 1.75" frame
- Added weight, Sled base
- Frame in any Spectone color
- Steel glides secured with LOCTITE®
- Tamperproof hardware
- Zippered covers glued shut, pulls removed
- Ships assembled
- Medium Back ships 1/carton 15 cu ft
- Highback ships 1/carton 19 cu ft

Options

- Polyurethane arms are available in Black, Sterling Grey and Taupe (RAL 7006)
- Floor mounting glides, add \$57 List/chair
- CAL 133

Contact Spec Customer Service to railroad fabrics (specify repeat info and yardage requirement will be provided) and for repeats greater than 5" x 5"



Companion HD Highback with arms – Sled Base

COM 2.25 yds
 1.0 yd COM per single seat
 1.25 yd COM per single back

MODEL	COM	GR 1	GR 2	GR 3	GR 4	GR 5	GR 6
4201HHD	1985	2144	2201	2306	2468	2589	2748

For steel arms add suffix S and \$84

Dimensions (inches)

seat H	18.0	seat W	21.0	arm H	27.0
total H	45.0	total W	26.0	depth	27.0

CAL 133, add \$171 List per chair



4201HHD
71 lbs

Companion HD Bariatric with arms – Sled Base

COM 3.25 yds
 1.5 yd COM per single seat
 1.75 yd COM per single back

MODEL	COM	GR 1	GR 2	GR 3	GR 4	GR 5	GR 6
4201GHD	2334	2550	2621	2771	2984	3153	3371

For steel arms add suffix S and \$84

Dimensions (inches)

seat H	18.0	seat W	30.0	arm H	27.0
total H	32.5	total W	35.0	depth	27.0

CAL 133, add \$206 List per chair



4201GHD
78 lbs



BEHAVIORAL HEALTH & HEAVY DUTY Specialty Seating

COOPER DWIGHT HD

Standard Features

- Separate seat and back
- Meets seating durability test to 500 lbs per chair
- Laminate or upholstered side panels on inside and outside of arm in various combinations
- Upholstered side panels can match or contrast seat/back
- Select from 15 standard laminates or choose any standard Wilsonart, Nevamar, Formica, Arborite and Pionite matte finish laminates for no extra charge.
- Fully welded frame with 1.625" steel legs and 1.25" steel tubular sleds
- Frame in any Spectone color
- Steel glides secured with LOCTITE®
- Replaceable seats
- No protruding legs or hardware
- Tamper proof fastenings
- Ships assembled, 1/carton 15 cu ft
- Polyurethane arm caps are available in flat (PF) or rounded (PR) profile
- Round polyurethane arm caps available in Black, Sterling Grey and Taupe (RAL 7006)
- Flat polyurethane arm caps available in Black only
- KYDEX® flat arms available in Black (B) or Taupe RAL 7006 (T) or Sterling Grey (G)
- Four white nylon caps can be added to prevent rust in areas with frequent cleaning/mopping. Add \$20 List
- Floor mounting straps available, call Customer Service
- Additional weight may be available, call Customer Service
- Antibacterial and antimicrobial fabrics available
- Different fabric on seat and back at no upcharge
- CAL 133

Contact Spec™ Customer Service to railroad fabrics (specify repeat info and yardage requirement will be provided) and for repeats greater than 5" x 5"



Cooper Dwight HD Single Seater with arms

COM 1.75 yds

0.75 yd COM per single seat / 1.0 yd COM per single back

MODEL	COM	GR 1	GR 2	GR 3	GR 4	GR 5	GR 6
6101MHD-LL	1744	1873	1915	2007	2139	2242	2377

Side panel – laminated, outside and inside

CAL 133, add \$151 List per chair



6101MHD-LL
75 lbs

COM 2.5 yds

0.75 yd COM per single seat / 1.0 yd COM per single back / 0.375 yd COM per panel

MODEL	COM	GR 1	GR 2	GR 3	GR 4	GR 5	GR 6
6101MHD-LU	1835	2017	2077	2203	2390	2534	2722

Side panel – laminated, outside, upholstered inside

CAL 133, add \$259 List per chair

COM 2.5 yds

0.75 yd COM per single seat / 1.0 yd COM per single back / 0.375 yd COM per panel

MODEL	COM	GR 1	GR 2	GR 3	GR 4	GR 5	GR 6
6101MHD-UL	1835	2017	2077	2203	2390	2534	2722

Side panel – upholstered outside, laminated inside

CAL 133, add \$259 List per chair

COM 3.25 yds

0.75 yd COM per single seat / 1.0 yd COM per single back / 0.75 yd COM per panel

MODEL	COM	GR 1	GR 2	GR 3	GR 4	GR 5	GR 6
6101MHD-UU	1884	2117	2197	2358	2596	2780	3024

Side panel – upholstered, outside and inside

CAL 133, add \$361 List per chair

Dimensions (inches)

seat H	18.0	seat W	21.0	arm H	25.0
total H	33.75	total W	25.25	depth	25.0

For KYDEX® flat arms add suffix K and \$374



BEHAVIORAL HEALTH & HEAVY DUTY Specialty Seating

COOPER DWIGHT HD

Standard Features

- Separate seat and back
- Meets seating durability test to 500 lbs per chair
- Laminate or upholstered side panels on inside and outside of arm in various combinations
- Upholstered side panels can match or contrast seat/back
- Select from 15 standard laminates or choose any standard Wilsonart, Nevamar, Formica, Arborite and Pionite matte finish laminates for no extra charge.
- Fully welded frame with 1.625" steel legs and 1.25" steel tubular sleds
- Frame in any Spectone color
- Steel glides secured with LOCTITE®
- Replaceable seats
- No protruding legs or hardware
- Tamper proof fastenings
- Ships assembled, 1/carton 15 cu ft

Options

- Polyurethane arm caps are available in flat (PF) or rounded (PR) profile
- Round polyurethane arm caps available in Black, Sterling Grey and Taupe (RAL 7006)
- Flat polyurethane arm caps available in Black only
- KYDEX® flat arms available in Black (B) or Taupe RAL 7006 (T) or Sterling Grey (G)
- Four white nylon caps can be added to prevent rust in areas with frequent cleaning/mopping. Add \$20 List
- Floor mounting straps available, call Customer Service
- Additional weight may be available, call Customer Service
- Antibacterial and antimicrobial fabrics available
- Different fabric on seat and back for no extra charge
- CAL 133

Contact Spec Customer Service to railroad fabrics (specify repeat info and yardage requirement will be provided) and for repeats greater than 5" x 5"



Cooper Dwight HD Single Seater with no arms

COM 1.75 yds
0.75 yd COM per single seat / 1.0 yd COM per single back

MODEL	COM	GR 1	GR 2	GR 3	GR 4	GR 5	GR 6
6101MHD-LL-N	1688	1819	1862	1952	2084	2187	2321

Side panel – laminated, outside and inside
CAL 133, add \$151 List per chair

COM 2.5 yds
0.75 yd COM per single seat / 1.0 yd COM per single back / 0.375 yd COM per panel

MODEL	COM	GR 1	GR 2	GR 3	GR 4	GR 5	GR 6
6101MHD-LU-N	1766	1935	1987	2105	2276	2407	2581

Side panel – laminated, outside, upholstered inside
CAL 133, add \$259 List per chair

COM 2.5 yds
0.75 yd COM per single seat / 1.0 yd COM per single back / 0.375 yd COM per panel

MODEL	COM	GR 1	GR 2	GR 3	GR 4	GR 5	GR 6
6101MHD-UL-N	1766	1935	1987	2105	2276	2407	2581

Side panel – upholstered outside, laminated inside
CAL 133, add \$259 List per chair

COM 3.25 yds
0.75 yd COM per single seat / 1.0 yd COM per single back / 0.75 yd COM per panel

MODEL	COM	GR 1	GR 2	GR 3	GR 4	GR 5	GR 6
6101MHD-UU-N	1814	2021	2087	2229	2438	2598	2810

Side panel – upholstered, outside and inside
CAL 133, add \$361 List per chair

Dimensions (inches)

seat H	18.0	seat W	21.0	arm H	20.0
total H	33.75	total W	25.25	depth	25.0

For KYDEX® flat arms add suffix K and \$374



6101MHD-LL-N
70 lbs



BEHAVIORAL HEALTH & HEAVY DUTY Specialty Seating

DIGNITY

Standard Features

- Separate seat and back
- Meets seating durability test to 500 lbs per chair
- Self-skinned polyurethane perimeter arms
- Upholstered side panels can match or contrast seat/back
- Laminate or upholstered side panels on inside and outside of arm
- Select from 15 standard laminates or choose any standard Wilsonart, Nevamar, Formica, Arborite and Pionite matte finish laminates for no extra charge.
- No protruding legs or hardware
- Tamper proof fastenings
- Non-removable steel leveling glides
- Ships assembled
- Ships 1/carton 15 cu ft

Contact Spec Customer Service to railroad fabrics (specify repeat info and yardage requirement will be provided) and for repeats greater than 5" x 5"

Options

- Specify frame finish, Black (B), Sterling Grey (G) or Taupe RAL 7006 (T)
- Add up to 20 lbs of additional weight per seat, add \$192 List per seat
- Four white nylon caps can be added to prevent rust in areas with frequent cleaning/mopping. Add \$ 20 List
- Non-standard laminates, contact Spec for pricing
- Antibacterial and antimicrobial fabrics available
- Floor mounting straps available, call Customer Service
- Connecting and freestanding tables
- CAL 133
- Elimination of separated seat and back available with either solid or perforated seat pan, call Customer Service



Single Seater with arms

COM 1.85 yds

0.75 yd COM per single seat / 1.10 yd COM per single back

MODEL	COM	GR 1	GR 2	GR 3	GR 4	GR 5	GR 6
4501M-LL	1959	2083	2123	2203	2324	2417	2538

Arm panel – laminated, outside and inside

CAL 133, add \$151 List per chair



4501M
107 lbs

COM 2.85 yds

0.75 yd COM per single seat / 1.10 yd COM per single back / .5 yd COM per panel

MODEL	COM	GR 1	GR 2	GR 3	GR 4	GR 5	GR 6
4501M-LU	2115	2308	2371	2498	2689	2830	3022

Arm panel – laminated, outside, upholstered inside

CAL 133, add \$259 List per chair

COM 2.85 yds

0.75 yd COM per single seat / 1.10 yd COM per single back / .5 yd COM per panel

MODEL	COM	GR 1	GR 2	GR 3	GR 4	GR 5	GR 6
4501M-UL	2115	2308	2371	2498	2689	2830	3022

Arm panel – upholstered outside, laminated inside

CAL 133, add \$259 List per chair

COM 3.85 yds

0.75 yd COM per single seat / 1.10 yd COM per single back / 1.0 yd COM per panel

MODEL	COM	GR 1	GR 2	GR 3	GR 4	GR 5	GR 6
4501M-UU	2269	2530	2616	2791	3049	3246	3505

Arm panel – upholstered, outside and inside

CAL 133, add \$361 List per chair

Dimensions (inches)

seat H	18.0	seat W	23.0	arm H	25.25
total H	32.75	total W	29.0	depth	29.75



BEHAVIORAL HEALTH & HEAVY DUTY Specialty Seating

DIGNITY

Standard Features

- Separate seat and back
- Meets seating durability test to 750 lbs per two seater
- Self-skinned polyurethane perimeter arms
- Upholstered side panels can match or contrast seat/back
- Laminate or upholstered side panels on inside and outside of arm
- Select from 15 standard laminates or choose any standard Wilsonart, Nevamar, Formica, Arborite and Pionite matte finish laminates for no extra charge.
- No protruding legs or hardware
- Tamper proof fastenings
- Non-removable steel leveling glides
- Ships assembled
- Ships 1/carton 26 cu ft

Contact Spec Customer Service to railroad fabrics (specify repeat info and yardage requirement will be provided) and for repeats greater than 5" x 5"

Options

- Specify frame finish, Black (B), Sterling Grey (G) or Taupe RAL 7006 (T)
- Add up to 20 lbs of additional weight per seat, add \$192 List per seat
- Four white nylon caps can be added to prevent rust in areas with frequent cleaning/mopping. Add \$ 20 List
- Non-standard laminates, contact Spec for pricing
- Antibacterial and antimicrobial fabrics available
- Floor mounting straps available, call Customer Service
- Connecting and freestanding tables
- CAL 133
- Elimination of separated seat and back available with either solid or perforated seat pan, call Customer Service



Two Seater with outside arms

COM 3.70 yds

0.75 yd COM per single seat / 1.10 yd COM per single back

MODEL	COM	GR 1	GR 2	GR 3	GR 4	GR 5	GR 6
4502M-LL	2880	3121	3203	3364	3607	3790	4034

Arm panel – laminated, outside and inside

CAL 133, add \$305 List per two seater

COM 4.70 yds

0.75 yd COM per single seat / 1.10 yd COM per single back / .5 yd COM per panel

MODEL	COM	GR 1	GR 2	GR 3	GR 4	GR 5	GR 6
4502M-LU	3034	3347	3453	3657	3971	4208	4518

Arm panel – laminated, outside, upholstered inside

CAL 133, add \$408 List per two seater

COM 4.70 yds

0.75 yd COM per single seat / 1.10 yd COM per single back / .5 yd COM per panel

MODEL	COM	GR 1	GR 2	GR 3	GR 4	GR 5	GR 6
4502M-UL	3034	3347	3453	3657	3971	4208	4518

Arm panel – upholstered outside, laminated inside

CAL 133, add \$408 List per two seater

COM 5.70 yds

0.75 yd COM per single seat / 1.10 yd COM per single back / 1.0 yd COM per panel

MODEL	COM	GR 1	GR 2	GR 3	GR 4	GR 5	GR 6
4502M-UU	3187	3570	3697	3951	4331	4619	5006

Arm panel – upholstered, outside and inside

CAL 133, add \$512 List per two seater

Dimensions (inches)

seat H	18.0	seat W	46.0	arm H	25.25
total H	32.75	total W	52.0	depth	29.75



4502M
152 lbs



BEHAVIORAL HEALTH & HEAVY DUTY Specialty Seating

DIGNITY

Standard Features

- Separate seat and back
- Meets seating durability test to 1000 lbs per three seater
- Self-skinned polyurethane perimeter arms
- Upholstered side panels can match or contrast seat/back
- Laminate or upholstered side panels on inside and outside of arm
- Select from 15 standard laminates or choose any standard Wilsonart, Nevamar, Formica, Arborite and Pionite matte finish laminates for no extra charge.
- No protruding legs or hardware
- Tamper proof fastenings
- Non-removable steel leveling glides
- Ships assembled
- Ships 1/carton 39 cu ft

Contact Spec Customer Service to railroad fabrics (specify repeat info and yardage requirement will be provided) and for repeats greater than 5" x 5"

Options

- Specify frame finish, Black (B), Sterling Grey (G) or Taupe RAL 7006 (T)
- Add up to 20 lbs of additional weight per seat, add \$192 List per seat
- Four white nylon caps can be added to prevent rust in areas with frequent cleaning/mopping. Add \$ 20 List
- Non-standard laminates, contact Spec for pricing
- Antibacterial and antimicrobial fabrics available
- Floor mounting straps available, call Customer Service
- Connecting and freestanding tables
- CAL 133
- Elimination of separated seat and back available with either solid or perforated seat pan, call Customer Service



Three Seater with outside arms

COM 5.55 yds

0.75 yd COM per single seat / 1.10 yd COM per single back

MODEL	COM	GR 1	GR 2	GR 3	GR 4	GR 5	GR 6
4503M-LL	3796	4163	4285	4526	4892	5165	5531

Arm panel – laminated, outside and inside

CAL 133, add \$457 List per three seater



4503M
197 lbs

COM 6.55 yds

0.75 yd COM per single seat / 1.10 yd COM per single back / .5 yd COM per panel

MODEL	COM	GR 1	GR 2	GR 3	GR 4	GR 5	GR 6
4503M-LU	3950	4387	4531	4822	5254	5579	6017

Arm panel – laminated, outside, upholstered inside

CAL 133, add \$561 List per three seater

COM 6.55 yds

0.75 yd COM per single seat / 1.10 yd COM per single back / .5 yd COM per panel

MODEL	COM	GR 1	GR 2	GR 3	GR 4	GR 5	GR 6
4503M-UL	3950	4387	4531	4822	5254	5579	6017

Arm panel – upholstered outside, laminated inside

CAL 133, add \$561 List per three seater

COM 7.55 yds

0.75 yd COM per single seat / 1.10 yd COM per single back / 1.0 yd COM per panel

MODEL	COM	GR 1	GR 2	GR 3	GR 4	GR 5	GR 6
4503M-UU	4105	4612	4779	5115	5614	5994	6502

Arm panel – upholstered, outside and inside

CAL 133, add \$666 List per three seater

Dimensions (inches)

seat H	18.0	seat W	69.0	arm H	25.25
total H	32.75	total W	75.0	depth	29.75



BEHAVIORAL HEALTH & HEAVY DUTY Specialty Seating

DIGNITY

Standard Features

- Separate seat and back
- Meets seating durability test to 750 lbs per chair
- Self-skinned polyurethane perimeter arms
- Upholstered side panels can match or contrast seat/back
- Laminate or upholstered side panels on inside and outside of arm
- Select from 15 standard laminates or choose any standard Wilsonart, Nevamar, Formica, Arborite and Pionite matte finish laminates for no extra charge.
- No protruding legs or hardware
- Tamper proof fastenings
- Non-removable steel leveling glides
- Ships assembled
- Ships 1/carton 20 cu ft

Contact Spec Customer Service to railroad fabrics (specify repeat info and yardage requirement will be provided) and for repeats greater than 5" x 5"

Options

- Specify frame finish, Black (B), Sterling Grey (G) or Taupe RAL 7006 (T)
- Add up to 20 lbs of additional weight per seat, add \$192 List per seat
- Four white nylon caps can be added to prevent rust in areas with frequent cleaning/mopping. Add \$ 20 List
- Non-standard laminates, contact Spec for pricing
- Antibacterial and antimicrobial fabrics available
- Floor mounting straps available, call Customer Service
- Connecting and freestanding tables
- CAL 133
- Elimination of separated seat and back available with either solid or perforated seat pan, call Customer Service



Bariatric Single Seater with arms

COM 3.25 yds

1.5 yd COM per single seat / 1.75 yd COM per single back

MODEL	COM	GR 1	GR 2	GR 3	GR 4	GR 5	GR 6
4501G-LL	2535	2765	2835	2986	3212	3384	3610

Arm panel – laminated, outside and inside

CAL 133, add \$190 List per chair



4501G
116 lbs

COM 4.25 yds

1.5 yd COM per single seat / 1.75 yd COM per single back / .5 yd COM per panel

MODEL	COM	GR 1	GR 2	GR 3	GR 4	GR 5	GR 6
4501G-LU	2691	2986	3082	3280	3573	3795	4091

Arm panel – laminated, outside, upholstered inside

CAL 133, add \$297 List per chair

COM 4.25 yds

1.5 yd COM per single seat / 1.75 yd COM per single back / .5 yd COM per panel

MODEL	COM	GR 1	GR 2	GR 3	GR 4	GR 5	GR 6
4501G-UL	2691	2986	3082	3280	3573	3795	4091

Arm panel – upholstered outside, laminated inside

CAL 133, add \$297 List per chair

COM 5.25 yds

1.5 yd COM per single seat / 1.75 yd COM per single back / 1.0 yd COM per panel

MODEL	COM	GR 1	GR 2	GR 3	GR 4	GR 5	GR 6
4501G-UU	2845	3211	3330	3573	3938	4213	4581

Arm panel – upholstered, outside and inside

CAL 133, add \$403 List per chair

Dimensions (inches)

seat H	18.0	seat W	30.25	arm H	25.25
total H	32.75	total W	36.25	depth	29.75

BEHAVIORAL HEALTH & HEAVY DUTY Specialty Seating DIGNITY

Standard Features

- Black finish only
- 6" soft wheel casters
- Standard Dolly holds 1 single seat chair
- Ships 1/carton, 17 cu. ft.
- Ships assembled



Dignity - Dolly

Description	Model	Price	Weight
Single Seat Dolly	DIGN-99	705	12lb

Dimensions (inches)

height	39.0
width	23.0
depth	30.0





BEHAVIORAL HEALTH & HEAVY DUTY Specialty Seating

DIGNITY2

Standard Features

- Separate seat and back
- Meets seating durability test to 500 lbs per chair
- Arm caps available in wood, or polyurethane
- Laminate or upholstered side panels on inside and outside of arm in various combinations
- Upholstered side panels can match or contrast seat/back
- Select from 15 standard laminates or choose any standard Wilsonart, Nevamar, Formica, Arborite and Pionite matte finish laminates for no extra charge.
- Sculpted steel leg in any Spectone finish
- No protruding legs or hardware
- Tamper proof fastenings
- Non-removable steel leveling glides
- Ships assembled, 1/carton 15 cu ft

Options

- Polyurethane arm caps available in Black (B) or Taupe RAL 7006 (T) or Sterling Grey (G)
- For wood arm caps, select from 9 standard stains, or stain-to-match for no extra charge
- KYDEX® arm caps available in Black (B) or Taupe RAL 7006 (T) or Sterling Grey (G)
- Thermofoil side panels on inside and outside of arm, call Customer Service for pricing and finishes
- Add up to 20 lbs of additional weight per seat, add \$192 List per seat
- Four white nylon caps can be added to prevent rust in areas with frequent cleaning/mopping. Add \$20 List
- Non-standard laminates, contact Spec for pricing
- Antibacterial and antimicrobial fabrics available
- Floor mounting straps available, call Customer Service
- Connecting and freestanding tables
- CAL 133
- Elimination of separated seat and back available with either solid or perforated seat pan, call Customer Service

Contact Spec Customer Service to railroad fabrics (specify repeat info and yardage requirement will be provided) and for repeats greater than 5" x 5"

Single Seater with arms

COM 1.85 yds
0.75 yd COM per single seat / 1.10 yd COM per single back

MODEL	COM	GR 1	GR 2	GR 3	GR 4	GR 5	GR 6
4601M-LL	1941	2064	2103	2183	2304	2394	2514

Side panel – laminated, outside and inside
CAL 133, add \$151 List per chair

COM 2.85 yds
0.75 yd COM per single seat / 1.10 yd COM per single back / .5 yd COM per panel

MODEL	COM	GR 1	GR 2	GR 3	GR 4	GR 5	GR 6
4601M-LU	2095	2286	2348	2474	2663	2804	2994

Side panel – laminated, outside, upholstered inside
CAL 133, add \$259 List per chair

COM 2.85 yds
0.75 yd COM per single seat / 1.10 yd COM per single back / .5 yd COM per panel

MODEL	COM	GR 1	GR 2	GR 3	GR 4	GR 5	GR 6
4601M-UL	2095	2286	2348	2474	2663	2804	2994

Side panel – upholstered outside, laminated inside
CAL 133, add \$259 List per chair

COM 3.85 yds
0.75 yd COM per single seat / 1.10 yd COM per single back / 1.0 yd COM per panel

MODEL	COM	GR 1	GR 2	GR 3	GR 4	GR 5	GR 6
4601M-UU	2247	2507	2592	2766	3020	3216	3472

Side panel – upholstered, outside and inside
CAL 133, add \$361 List per chair

Dimensions (inches)

seat H	18.0	seat W	23.0	arm H	26.0
total H	31.75	total W	28.5	depth	30.0

For KYDEX® arms add suffix K and \$408



4601M
94 lbs



BEHAVIORAL HEALTH & HEAVY DUTY Specialty Seating

DIGNITY2

Standard Features

- Separate seat and back
- Meets seating durability test to 750 lbs per two seater
- Arm caps available in wood, or polyurethane
- Laminate or upholstered side panels on inside and outside of arm in various combinations
- Upholstered side panels can match or contrast seat/back
- Select from 15 standard laminates or choose any standard Wilsonart, Nevamar, Formica, Arborite and Pionite matte finish laminates for no extra charge.
- Sculpted steel leg in any Spectone finish
- No protruding legs or hardware
- Tamper proof fastenings
- Non-removable steel leveling glides
- Ships assembled, 1/carton 15 cu ft

Options

- Polyurethane arm caps available in Black (B) or Taupe RAL 7006 (T) or Sterling Grey (G)
- For wood arm caps, select from 9 standard stains, or stain-to-match for no extra charge
- KYDEX® arm caps available in Black (B) or Taupe RAL 7006 (T) or Sterling Grey (G)
- Thermofoil side panels on inside and outside of arm, call Customer Service for pricing and finishes
- Add up to 20 lbs of additional weight per seat, add \$192 List per seat
- Four white nylon caps can be added to prevent rust in areas with frequent cleaning/mopping. Add \$20 List
- Non-standard laminates, contact Spec for pricing
- Antibacterial and antimicrobial fabrics available
- Floor mounting straps available, call Customer Service
- Connecting and freestanding tables
- CAL 133
- Elimination of separated seat and back available with either solid or perforated seat pan, call Customer Service

Contact Spec Customer Service to railroad fabrics (specify repeat info and yardage requirement will be provided) and for repeats greater than 5" x 5"

Two Seater with outside arms

COM 3.70 yds

0.75 yd COM per single seat / 1.10 yd COM per single back

MODEL	COM	GR 1	GR 2	GR 3	GR 4	GR 5	GR 6
4602M-LL	2852	3093	3173	3333	3574	3753	3996

Side panel – laminated, outside and inside

CAL 133, add \$305 List per two seater

COM 4.70 yds

0.75 yd COM per single seat / 1.10 yd COM per single back / .5 yd COM per panel

MODEL	COM	GR 1	GR 2	GR 3	GR 4	GR 5	GR 6
4602M-LU	3005	3315	3420	3622	3934	4168	4476

Side panel – laminated, outside, upholstered inside

CAL 133, add \$408 List per two seater

COM 4.70 yds

0.75 yd COM per single seat / 1.10 yd COM per single back / .5 yd COM per panel

MODEL	COM	GR 1	GR 2	GR 3	GR 4	GR 5	GR 6
4602M-UL	3005	3315	3420	3622	3934	4168	4476

Side panel – upholstered outside, laminated inside

CAL 133, add \$408 List per two seater

COM 5.70 yds

0.75 yd COM per single seat / 1.10 yd COM per single back / 1.0 yd COM per panel

MODEL	COM	GR 1	GR 2	GR 3	GR 4	GR 5	GR 6
4602M-UU	3156	3537	3662	3913	4289	4576	4958

Side panel – upholstered, outside and inside

CAL 133, add \$512 List per two seater

Dimensions (inches)

seat H	18.0	seat W	45.5	arm H	26.0
total H	31.75	total W	51.0	depth	30.0

For KYDEX® arms add suffix K and \$408



4602M
148 lbs



BEHAVIORAL HEALTH & HEAVY DUTY Specialty Seating

DIGNITY2

Standard Features

- Separate seat and back
- Meets seating durability test to 1000 lbs per three seater
- Arm caps available in wood, or polyurethane
- Laminate or upholstered side panels on inside and outside of arm in various combinations
- Upholstered side panels can match or contrast seat/back
- Select from 15 standard laminates or choose any standard Wilsonart, Nevamar, Formica, Arborite and Pionite matte finish laminates for no extra charge.
- Sculpted steel leg in any Spectone finish
- No protruding legs or hardware
- Tamper proof fastenings
- Non-removable steel leveling glides
- Ships assembled, 1/carton 15 cu ft

Options

- Polyurethane arm caps available in Black (B) or Taupe RAL 7006 (T) or Sterling Grey (G)
- For wood arm caps, select from 9 standard stains, or stain-to-match for no extra charge
- KYDEX® arm caps available in Black (B) or Taupe RAL 7006 (T) or Sterling Grey (G)
- Thermofoil side panels on inside and outside of arm, call Customer Service for pricing and finishes
- Add up to 20 lbs of additional weight per seat, add \$192 List per seat
- Four white nylon caps can be added to prevent rust in areas with frequent cleaning/mopping. Add \$20 List
- Non-standard laminates, contact Spec for pricing
- Antibacterial and antimicrobial fabrics available
- Floor mounting straps available, call Customer Service
- Connecting and freestanding tables
- CAL 133
- Elimination of separated seat and back available with either solid or perforated seat pan, call Customer Service

Contact Spec Customer Service to railroad fabrics (specify repeat info and yardage requirement will be provided) and for repeats greater than 5" x 5"

Three Seater with outside arms

COM 5.55 yds

0.75 yd COM per single seat / 1.10 yd COM per single back

MODEL	COM	GR 1	GR 2	GR 3	GR 4	GR 5	GR 6
4603M-LL	3761	4125	4244	4485	4846	5117	5481

Side panel – laminated, outside and inside
CAL 133, add \$457 List per three seater

COM 6.55 yds

0.75 yd COM per single seat / 1.10 yd COM per single back / .5 yd COM per panel

MODEL	COM	GR 1	GR 2	GR 3	GR 4	GR 5	GR 6
4603M-LU	3912	4345	4487	4778	5205	5526	5961

Side panel – laminated, outside, upholstered inside
CAL 133, add \$561 List per three seater

COM 6.55 yds

0.75 yd COM per single seat / 1.10 yd COM per single back / .5 yd COM per panel

MODEL	COM	GR 1	GR 2	GR 3	GR 4	GR 5	GR 6
4603M-UL	3912	4345	4487	4778	5205	5526	5961

Side panel – upholstered outside, laminated inside
CAL 133, add \$561 List per three seater

COM 7.55 yds

0.75 yd COM per single seat / 1.10 yd COM per single back / 1.0 yd COM per panel

MODEL	COM	GR 1	GR 2	GR 3	GR 4	GR 5	GR 6
4603M-UU	4066	4568	4735	5067	5560	5938	6442

Side panel – upholstered, outside and inside
CAL 133, add \$666 List per three seater

Dimensions (inches)

seat H	18.0	seat W	68.0	arm H	26.0
total H	31.75	total W	74.0	depth	30.0

For KYDEX® arms add suffix K and \$408



4603M
203 lbs





BEHAVIORAL HEALTH & HEAVY DUTY Specialty Seating

DIGNITY2

Standard Features

- Separate seat and back
- Meets seating durability test to 750 lbs per chair
- Arm caps available in wood, or polyurethane
- Laminate or upholstered side panels on inside and outside of arm in various combinations
- Upholstered side panels can match or contrast seat/back
- Select from 15 standard laminates or choose any standard Wilsonart, Nevamar, Formica, Arborite and Pionite matte finish laminates for no extra charge.
- Sculpted steel leg in any Spectone finish
- No protruding legs or hardware
- Tamper proof fastenings
- Non-removable steel leveling glides
- Ships assembled, 1/carton 15 cu ft

Options

- Polyurethane arm caps available in Black (B) or Taupe RAL 7006 (T) or Sterling Grey (G)
- For wood arm caps, select from 9 standard stains, or stain-to-match for no extra charge
- KYDEX® arm caps available in Black (B) or Taupe RAL 7006 (T) or Sterling Grey (G)
- Thermofoil side panels on inside and outside of arm, call Customer Service for pricing and finishes
- Add up to 20 lbs of additional weight per seat, add \$192 List per seat
- Four white nylon caps can be added to prevent rust in areas with frequent cleaning/mopping. Add \$20 List
- Non-standard laminates, contact Spec for pricing
- Antibacterial and antimicrobial fabrics available
- Floor mounting straps available, call Customer Service
- Connecting and freestanding tables
- CAL 133
- Elimination of separated seat and back available with either solid or perforated seat pan, call Customer Service

Contact Spec Customer Service to railroad fabrics (specify repeat info and yardage requirement will be provided) and for repeats greater than 5" x 5"

Bariatric Single Seater with arms

COM 3.25 yds

1.5 yd COM per single seat / 1.75 yd COM per single back

MODEL	COM	GR 1	GR 2	GR 3	GR 4	GR 5	GR 6
4601G-LL	2510	2738	2810	2959	3183	3352	3576

Side panel – laminated, outside and inside

CAL 133, add \$190 List per chair



4601G
112 lbs

COM 4.25 yds

1.5 yd COM per single seat / 1.75 yd COM per single back / .5 yd COM per panel

MODEL	COM	GR 1	GR 2	GR 3	GR 4	GR 5	GR 6
4601G-LU	2664	2959	3055	3249	3539	3759	4053

Side panel – laminated, outside, upholstered inside

CAL 133, add \$297 List per chair

COM 4.25 yds

1.5 yd COM per single seat / 1.75 yd COM per single back / .5 yd COM per panel

MODEL	COM	GR 1	GR 2	GR 3	GR 4	GR 5	GR 6
4601G-UL	2664	2959	3055	3249	3539	3759	4053

Side panel – upholstered outside, laminated inside

CAL 133, add \$297 List per chair

COM 5.25 yds

1.5 yd COM per single seat / 1.75 yd COM per single back / 1.0 yd COM per panel

MODEL	COM	GR 1	GR 2	GR 3	GR 4	GR 5	GR 6
4601G-UU	2817	3181	3299	3539	3902	4173	4539

Side panel – upholstered, outside and inside

CAL 133, add \$403 List per chair

Dimensions (inches)

seat H	18.0	seat W	31.0	arm H	26.0
total H	31.75	total W	36.5	depth	30.0

For KYDEX® arms add suffix K and \$408



BEHAVIORAL HEALTH & HEAVY DUTY Specialty Seating

DIGNITY2

Standard Features

- Separate seat and back
- Meets seating durability test to 500 lbs per chair
- Arm caps available in wood, or polyurethane
- Laminate or upholstered side panels on inside and outside of arm in various combinations
- Upholstered side panels can match or contrast seat/back
- Select from 15 standard laminates or choose any standard Wilsonart, Nevamar, Formica, Arborite and Pionite matte finish laminates for no extra charge.
- Sculpted steel leg in any Spectone finish
- No protruding legs or hardware
- Tamper proof fastenings
- Non-removable steel leveling glides
- Ships assembled, 1/carton 15 cu ft

Options

- Polyurethane arm caps available in Black (B) or Taupe RAL 7006 (T) or Sterling Grey (G)
- For wood arm caps, select from 9 standard stains, or stain-to-match for no extra charge
- KYDEX® arm caps available in Black (B) or Taupe RAL 7006 (T) or Sterling Grey (G)
- Thermofoil side panels on inside and outside of arm, call Customer Service for pricing and finishes
- Add up to 20 lbs of additional weight per seat, add \$192 List per seat
- Four white nylon caps can be added to prevent rust in areas with frequent cleaning/mopping. Add \$20 List
- Non-standard laminates, contact Spec for pricing
- Antibacterial and antimicrobial fabrics available
- Floor mounting straps available, call Customer Service
- Connecting and freestanding tables
- CAL 133
- Elimination of separated seat and back available with either solid or perforated seat pan, call Customer Service

Contact Spec Customer Service to railroad fabrics (specify repeat info and yardage requirement will be provided) and for repeats greater than 5" x 5"



Single Seater with no arms

COM 1.85 yds
0.75 yd COM per single seat / 1.10 yd COM per single back

MODEL	COM	GR 1	GR 2	GR 3	GR 4	GR 5	GR 6
4601M-LL-N	1913	2033	2075	2155	2274	2365	2487

Side panel – laminated, outside and inside
CAL 133, add \$151 List per chair

COM 2.85 yds
0.75 yd COM per single seat / 1.10 yd COM per single back / .5 yd COM per panel

MODEL	COM	GR 1	GR 2	GR 3	GR 4	GR 5	GR 6
4601M-LU-N	2065	2256	2318	2444	2635	2773	2964

Side panel – laminated, outside, upholstered inside
CAL 133, add \$259 List per chair

COM 2.85 yds
0.75 yd COM per single seat / 1.10 yd COM per single back / .5 yd COM per panel

MODEL	COM	GR 1	GR 2	GR 3	GR 4	GR 5	GR 6
4601M-UL-N	2065	2256	2318	2444	2635	2773	2964

Side panel – upholstered outside, laminated inside
CAL 133, add \$259 List per chair

COM 3.85 yds
0.75 yd COM per single seat / 1.10 yd COM per single back / 1.0 yd COM per panel

MODEL	COM	GR 1	GR 2	GR 3	GR 4	GR 5	GR 6
4601M-UU-N	2217	2479	2564	2736	2992	3185	3444

Side panel – upholstered, outside and inside
CAL 133, add \$361 List per chair

Dimensions (inches)

seat H	18.0	seat W	23.0	arm H	17.5
total H	31.75	total W	28.5	depth	30.0

For KYDEX® arms add suffix K and \$408



4601M-N
90 lbs



BEHAVIORAL HEALTH & HEAVY DUTY Specialty Seating

DIGNITY2

Standard Features

- Separate seat and back
- Meets seating durability test to 750 lbs per two seater
- Arm caps available in wood, or polyurethane
- Laminate or upholstered side panels on inside and outside of arm in various combinations
- Upholstered side panels can match or contrast seat/back
- Select from 15 standard laminates or choose any standard Wilsonart, Nevamar, Formica, Arborite and Pionite matte finish laminates for no extra charge.
- Sculpted steel leg in any Spectone finish
- No protruding legs or hardware
- Tamper proof fastenings
- Non-removable steel leveling glides
- Ships assembled, 1/carton 15 cu ft

Options

- Polyurethane arm caps available in Black (B) or Taupe RAL 7006 (T) or Sterling Grey (G)
- For wood arm caps, select from 9 standard stains, or stain-to-match for no extra charge
- KYDEX® arm caps available in Black (B) or Taupe RAL 7006 (T) or Sterling Grey (G)
- Thermofoil side panels on inside and outside of arm, call Customer Service for pricing and finishes
- Add up to 20 lbs of additional weight per seat, add \$192 List per seat
- Four white nylon caps can be added to prevent rust in areas with frequent cleaning/mopping. Add \$20 List
- Non-standard laminates, contact Spec for pricing
- Antibacterial and antimicrobial fabrics available
- Floor mounting straps available, call Customer Service
- Connecting and freestanding tables
- CAL 133
- Elimination of separated seat and back available with either solid or perforated seat pan, call Customer Service

Contact Spec Customer Service to railroad fabrics (specify repeat info and yardage requirement will be provided) and for repeats greater than 5" x 5"



Two Seater with no arms

COM 3.70 yds
0.75 yd COM per single seat / 1.10 yd COM per single back

MODEL	COM	GR 1	GR 2	GR 3	GR 4	GR 5	GR 6
4602M-LL-N	2822	3065	3145	3306	3541	3726	3967

Side panel – laminated, outside and inside
CAL 133, add \$305 List per two seater

COM 4.70 yds
0.75 yd COM per single seat / 1.10 yd COM per single back / .5 yd COM per panel

MODEL	COM	GR 1	GR 2	GR 3	GR 4	GR 5	GR 6
4602M-LU-N	2975	3286	3387	3593	3903	4139	4449

Side panel – laminated, outside, upholstered inside
CAL 133, add \$408 List per two seater

COM 4.70 yds
0.75 yd COM per single seat / 1.10 yd COM per single back / .5 yd COM per panel

MODEL	COM	GR 1	GR 2	GR 3	GR 4	GR 5	GR 6
4602M-UL-N	2975	3286	3387	3593	3903	4139	4449

Side panel – upholstered outside, laminated inside
CAL 133, add \$408 List per two seater

COM 5.70 yds
0.75 yd COM per single seat / 1.10 yd COM per single back / 1.0 yd COM per panel

MODEL	COM	GR 1	GR 2	GR 3	GR 4	GR 5	GR 6
4602M-UU-N	3129	3511	3633	3887	4261	4547	4930

Side panel – upholstered, outside and inside
CAL 133, add \$512 List per two seater

Dimensions (inches)

seat H	18.0	seat W	45.0	arm H	17.5
total H	31.75	total W	51.0	depth	30.0

For KYDEX® arms add suffix K and \$408



4602M-N
144 lbs



BEHAVIORAL HEALTH & HEAVY DUTY Specialty Seating

DIGNITY2

Standard Features

- Separate seat and back
- Meets seating durability test to 1000 lbs per three seater
- Arm caps available in wood, or polyurethane
- Laminate or upholstered side panels on inside and outside of arm in various combinations
- Upholstered side panels can match or contrast seat/back
- Select from 15 standard laminates or choose any standard Wilsonart, Nevamar, Formica, Arborite and Pionite matte finish laminates for no extra charge.
- Sculpted steel leg in any Spectone finish
- No protruding legs or hardware
- Tamper proof fastenings
- Non-removable steel leveling glides
- Ships assembled, 1/carton 15 cu ft

Options

- Polyurethane arm caps available in Black (B) or Taupe RAL 7006 (T) or Sterling Grey (G)
- For wood arm caps, select from 9 standard stains, or stain-to-match for no extra charge
- KYDEX® arm caps available in Black (B) or Taupe RAL 7006 (T) or Sterling Grey (G)
- Thermofoil side panels on inside and outside of arm, call Customer Service for pricing and finishes
- Add up to 20 lbs of additional weight per seat, add \$192 List per seat
- Four white nylon caps can be added to prevent rust in areas with frequent cleaning/mopping. Add \$20 List
- Non-standard laminates, contact Spec for pricing
- Antibacterial and antimicrobial fabrics available
- Floor mounting straps available, call Customer Service
- Connecting and freestanding tables
- CAL 133
- Elimination of separated seat and back available with either solid or perforated seat pan, call Customer Service

Contact Spec Customer Service to railroad fabrics (specify repeat info and yardage requirement will be provided) and for repeats greater than 5" x 5"

Three Seater with no arms

COM 5.55 yds

0.75 yd COM per single seat / 1.10 yd COM per single back

MODEL	COM	GR 1	GR 2	GR 3	GR 4	GR 5	GR 6
4603M-LL-N	3731	4096	4216	4457	4816	5088	5450

Side panel – laminated, outside and inside

CAL 133, add \$457 List per three seater

COM 6.55 yds

0.75 yd COM per single seat / 1.10 yd COM per single back / .5 yd COM per panel

MODEL	COM	GR 1	GR 2	GR 3	GR 4	GR 5	GR 6
4603M-LU-N	3884	4318	4459	4748	5176	5498	5929

Side panel – laminated, outside, upholstered inside

CAL 133, add \$561 List per three seater

COM 6.55 yds

0.75 yd COM per single seat / 1.10 yd COM per single back / .5 yd COM per panel

MODEL	COM	GR 1	GR 2	GR 3	GR 4	GR 5	GR 6
4603M-UL-N	3884	4318	4459	4748	5176	5498	5929

Side panel – upholstered outside, laminated inside

CAL 133, add \$561 List per three seater

COM 7.55 yds

0.75 yd COM per single seat / 1.10 yd COM per single back / 1.0 yd COM per panel

MODEL	COM	GR 1	GR 2	GR 3	GR 4	GR 5	GR 6
4603M-UU-N	4037	4542	4701	5039	5534	5909	6410

Side panel – upholstered, outside and inside

CAL 133, add \$666 List per three seater

Dimensions (inches)

seat H	18.0	seat W	68.0	arm H	17.5
total H	31.75	total W	74.0	depth	30.0

For KYDEX® arms add suffix K and \$408



4603M-N
199 lbs





BEHAVIORAL HEALTH & HEAVY DUTY Specialty Seating

DIGNITY2

Standard Features

- Separate seat and back
- Meets seating durability test to 750 lbs per chair
- Arm caps available in wood, or polyurethane
- Laminate or upholstered side panels on inside and outside of arm in various combinations
- Upholstered side panels can match or contrast seat/back
- Select from 15 standard laminates or choose any standard Wilsonart, Nevamar, Formica, Arborite and Pionite matte finish laminates for no extra charge.
- Sculpted steel leg in any Spectone finish
- No protruding legs or hardware
- Tamper proof fastenings
- Non-removable steel leveling glides
- Ships assembled, 1/carton 15 cu ft

Options

- Polyurethane arm caps available in Black (B) or Taupe RAL 7006 (T) or Sterling Grey (G)
- For wood arm caps, select from 9 standard stains, or stain-to-match for no extra charge
- KYDEX® arm caps available in Black (B) or Taupe RAL 7006 (T) or Sterling Grey (G)
- Thermofoil side panels on inside and outside of arm, call Customer Service for pricing and finishes
- Add up to 20 lbs of additional weight per seat, add \$192 List per seat
- Four white nylon caps can be added to prevent rust in areas with frequent cleaning/mopping. Add \$20 List
- Non-standard laminates, contact Spec for pricing
- Antibacterial and antimicrobial fabrics available
- Floor mounting straps available, call Customer Service
- Connecting and freestanding tables
- CAL 133
- Elimination of separated seat and back available with either solid or perforated seat pan, call Customer Service

Contact Spec Customer Service to railroad fabrics (specify repeat info and yardage requirement will be provided) and for repeats greater than 5" x 5"



Bariatric Single Seater with no arms

COM 3.25 yds
1.5 yd COM per single seat / 1.75 yd COM per single back

MODEL	COM	GR 1	GR 2	GR 3	GR 4	GR 5	GR 6
4601G-LL-N	2484	2710	2782	2931	3154	3322	3547

Side panel – laminated, outside and inside
CAL 133, add \$190 List per chair



4601G-N
108 lbs

COM 4.25 yds
1.5 yd COM per single seat / 1.75 yd COM per single back / .5 yd COM per panel

MODEL	COM	GR 1	GR 2	GR 3	GR 4	GR 5	GR 6
4601G-LU-N	2636	2931	3024	3219	3513	3730	4026

Side panel – laminated, outside, upholstered inside
CAL 133, add \$297 List per chair

COM 4.25 yds
1.5 yd COM per single seat / 1.75 yd COM per single back / .5 yd COM per panel

MODEL	COM	GR 1	GR 2	GR 3	GR 4	GR 5	GR 6
4601G-UL-N	2636	2931	3024	3219	3513	3730	4026

Side panel – upholstered outside, laminated inside
CAL 133, add \$297 List per chair

COM 5.25 yds
1.5 yd COM per single seat / 1.75 yd COM per single back / 1.0 yd COM per panel

MODEL	COM	GR 1	GR 2	GR 3	GR 4	GR 5	GR 6
4601G-UU-N	2789	3153	3271	3513	3873	4144	4508

Side panel – upholstered, outside and inside
CAL 133, add \$403 List per chair

Dimensions (inches)

seat H	18.0	seat W	31.0	arm H	17.5
total H	31.75	total W	36.5	depth	30.0

For KYDEX® arms add suffix K and \$408



BEHAVIORAL HEALTH & HEAVY DUTY Specialty Seating

DIGNITY2

Standard Features

- Separate seat and back
- Meets seating durability test to 750 lbs per two seater
- Arm caps available in wood, or polyurethane
- Laminate or upholstered side panels on inside and outside of arm in various combinations
- Upholstered side panels can match or contrast seat/back
- Select from 15 standard laminates or choose any standard Wilsonart, Nevamar, Formica, Arborite and Pionite matte finish laminates for no extra charge.
- Sculpted steel leg in any Spectone finish
- No protruding legs or hardware
- Tamper proof fastenings
- Non-removable steel leveling glides
- Ships assembled, 1/carton 15 cu ft

Options

- Polyurethane arm caps available in Black (B) or Taupe RAL 7006 (T) or Sterling Grey (G)
- For wood arm caps, select from 9 standard stains, or stain-to-match for no extra charge
- KYDEX® end and polyurethane middle arm caps available in Black (B), Taupe RAL 7006 (T), or Sterling Grey (G).
- Thermofoil side panels on inside and outside of arm, call Customer Service for pricing and finishes
- Add up to 20 lbs of additional weight per seat, add \$192 List per seat
- Four white nylon caps can be added to prevent rust in areas with frequent cleaning/mopping. Add \$20 List
- Non-standard laminates, contact Spec for pricing
- Antibacterial and antimicrobial fabrics available
- Floor mounting straps available, call Customer Service
- Connecting and freestanding tables
- CAL 133
- Elimination of separated seat and back available with either solid or perforated seat pan, call Customer Service

Contact Spec Customer Service to railroad fabrics (specify repeat info and yardage requirement will be provided) and for repeats greater than 5" x 5"



Two Seater with half arms

COM 3.70 yds

0.75 yd COM per single seat / 1.10 yd COM per single back

MODEL	COM	GR 1	GR 2	GR 3	GR 4	GR 5	GR 6
4612M-LL	3400	3645	3727	3884	4127	4306	4548

Side panel – laminated, outside and inside

CAL 133, add \$305 List per two seater



4612M
153 lbs

COM 5.20 yds

0.75 yd COM per single seat / 1.10 yd COM per single back / .5 yd COM per panel

MODEL	COM	GR 1	GR 2	GR 3	GR 4	GR 5	GR 6
4612M-LU	3554	3899	4015	4243	4590	4846	5192

Side panel – laminated outside, upholstered inside, half arms will be upholstered

CAL 133, add \$462 List per two seater

COM 5.20 yds

0.75 yd COM per single seat / 1.10 yd COM per single back / .5 yd COM per panel

MODEL	COM	GR 1	GR 2	GR 3	GR 4	GR 5	GR 6
4612M-UL	3554	3899	4015	4243	4590	4846	5192

Side panel – upholstered outside, laminated inside, half arms will be laminated

CAL 133, add \$408 List per two seater

COM 6.20 yds

0.75 yd COM per single seat / 1.10 yd COM per single back / 1.0 yd COM per panel

MODEL	COM	GR 1	GR 2	GR 3	GR 4	GR 5	GR 6
4612M-UU	3708	4121	4261	4534	4947	5259	5671

Side panel – upholstered, outside and inside

CAL 133, add \$565 List per two seater

Dimensions (inches)

seat H	18.0	seat W	48.0	arm H	26.0
total H	31.75	total W	54.0	depth	30.0

For KYDEX® arms add suffix K and \$612



BEHAVIORAL HEALTH & HEAVY DUTY Specialty Seating

DIGNITY2

Standard Features

- Separate seat and back
- Meets seating durability test to 1000 lbs per three seater
- Arm caps available in wood, or polyurethane
- Laminate or upholstered side panels on inside and outside of arm in various combinations
- Upholstered side panels can match or contrast seat/back
- Select from 15 standard laminates or choose any standard Wilsonart, Nevamar, Formica, Arborite and Pionite matte finish laminates for no extra charge.
- Sculpted steel leg in any Spectone finish
- No protruding legs or hardware
- Tamper proof fastenings
- Non-removable steel leveling glides
- Ships assembled, 1/carton 15 cu ft

Options

- Polyurethane arm caps available in Black (B) or Taupe RAL 7006 (T) or Sterling Grey (G)
- For wood arm caps, select from 9 standard stains, or stain-to-match for no extra charge
- KYDEX® end and polyurethane middle arm caps available in Black (B), Taupe RAL 7006 (T), or Sterling Grey (G).
- Thermofoil side panels on inside and outside of arm, call Customer Service for pricing and finishes
- Add up to 20 lbs of additional weight per seat, add \$192 List per seat
- Four white nylon caps can be added to prevent rust in areas with frequent cleaning/mopping. Add \$20 List
- Non-standard laminates, contact Spec for pricing
- Antibacterial and antimicrobial fabrics available
- Floor mounting straps available, call Customer Service
- Connecting and freestanding tables
- CAL 133
- Elimination of separated seat and back available with either solid or perforated seat pan, call Customer Service

Contact Spec Customer Service to railroad fabrics (specify repeat info and yardage requirement will be provided) and for repeats greater than 5" x 5"

Three Seater with half arms

COM 5.55 yds

0.75 yd COM per single seat / 1.10 yd COM per single back

MODEL	COM	GR 1	GR 2	GR 3	GR 4	GR 5	GR 6
4613M-LL	4861	5224	5348	5587	5949	6216	6579

Side panel – laminated, outside and inside
CAL 133, add \$457 List per three seater

COM 7.55 yds

0.75 yd COM per single seat / 1.10 yd COM per single back / .5 yd COM per panel

MODEL	COM	GR 1	GR 2	GR 3	GR 4	GR 5	GR 6
4613M-LU	5013	5514	5684	6017	6516	6886	7389

Side panel – laminated outside, upholstered inside, half arms will be upholstered
CAL 133, add \$667 List per three seater

COM 7.55 yds

0.75 yd COM per single seat / 1.10 yd COM per single back / .5 yd COM per panel

MODEL	COM	GR 1	GR 2	GR 3	GR 4	GR 5	GR 6
4613M-UL	5013	5514	5684	6017	6516	6886	7389

Side panel – upholstered outside, laminated inside, half arms will be laminated
CAL 133, add \$561 List per three seater

COM 8.55 yds

0.75 yd COM per single seat / 1.10 yd COM per single back / 1.0 yd COM per panel

MODEL	COM	GR 1	GR 2	GR 3	GR 4	GR 5	GR 6
4613M-UU	5166	5736	5929	6305	6875	7295	7867

Side panel – upholstered, outside and inside
CAL 133, add \$769 List per three seater

Dimensions (inches)

seat H	18.0	seat W	75.0	arm H	26.0
total H	31.75	total W	80.5	depth	30.0

For KYDEX® arms add suffix K and \$816



4613M
209 lbs



BEHAVIORAL HEALTH & HEAVY DUTY Specialty Seating

DIGNITY2

Standard Features

- Tamper proof fastenings

To order full panel side panels, add ZC-LL, or ZC-U to model number, e.g. 4601M-ZC-LL

To order wall-saving side panels, add WS-LL or WS-U to the model number, e.g. 4601M-WS-U

Pricing is for entire chair (2 end side panels).

Contact Spec Customer Service to railroad fabrics (specify repeat info and yardage requirement will be provided) and for repeats greater than 5" x 5"

Options

- Thermofoil side panels on inside and outside of arm, call Customer Service for pricing and finishes
- Floor mounting straps available, call Customer Service



Extended Side Panels

Laminate Panels Inside & Outside

MODEL	LIST
ZC-LL	112

Laminate & Upholstered Combination Panels

COM 0.5 yd per panel

MODEL	COM	GR 1	GR 2	GR 3	GR 4	GR 5	GR 6
ZC-LU	112	127	131	137	150	160	174
ZC-UL	112	127	131	137	150	160	174

Fully Upholstered Panels

COM 1.5 yd per panel

MODEL	COM	GR 1	GR 2	GR 3	GR 4	GR 5	GR 6
ZC-U	112	127	131	137	150	160	174



Side panel extended to floor

Wall-Saving Side Panels

Laminate Panels Inside & Outside

MODEL	LIST
WS-LL	180

Laminate & Upholstered Combination Panels

COM 1.0 yd per panel

MODEL	COM	GR 1	GR 2	GR 3	GR 4	GR 5	GR 6
WS-LU	180	354	402	483	627	730	835
WS-UL	180	354	402	483	627	730	835

Fully Upholstered Panels

COM 2.0 yd per panel

MODEL	COM	GR 1	GR 2	GR 3	GR 4	GR 5	GR 6
WS-U	180	354	402	483	627	730	835



Wall-saving side panels



BEHAVIORAL HEALTH & HEAVY DUTY Specialty Seating DIGNITY2

Standard Features

- Black finish only
- 6" soft wheel casters
- Standard Dolly holds 1 single seat chair
- Ships 1/carton, 17 cu. ft.
- Ships assembled



Dignity2 - Dolly

Description	Model	Price	Weight
Single Seat Dolly	DIGN-99	705	12lb

Dimensions (inches)

height	39.0
width	23.0
depth	30.0

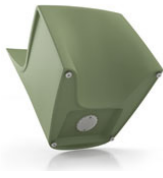




BEHAVIORAL HEALTH & HEAVY DUTY Specialty Seating HARDI

Standard Features

- Single-piece roto-molded design
- Meets seating durability test to 500 lbs per chair
- CAL 133 compliant
- Material compound contains UV stabilizers
- Select from 6 standard colors, which have been selected from our palette of standard Spectone finishes
- Standard without glides
- Dining ships 1/carton 14 cu ft, Lounge ships 1/carton 16 cu ft
- Removable threaded cap is fastened with tamperproof fasteners. Sand (not included) can be added on site for additional weight and ballast utilizing the plastic bag from packaging. Contact Customer Service for more information



Options

- Upholstered seat cushion, see below for pricing
- Four nickel-plated non-removable nylon glides secured with LOCTITE®, add \$25 List
- Ganging is available. Please specify a set of nickel-plated non-removable nylon glides secured with LOCTITE for each chair that you want to gang together (\$25 List per chair), and add Q-1 ganging kits (\$43 List)
In other words, to gang 9 chairs together, please order 9 sets of glides and 8 ganging kits
- Floor mounting is available. Please specify a set of nickel-plated non-removable nylon glides secured with LOCTITE for each chair that you want to mount to the floor (\$25 List per chair), and add the same amount of floor mounting kits (\$43 List). In other words, to floor mount 9 chairs, please order 9 sets of glides and 9 floor mounting kits



Dining

MODEL	Price
8701	741
8708	835

Dimensions (inches)

seat H	18.0	seat W	20.0	arm H	26.0	total H	33.0
depth	24.0	total W (no arms)	22.0	total W (arms)	24.0		

Optional Seat Cushion - Dining

COM 0.25 yd

COM	GR1	GR2	GR3	GR4	GR5	GR6
253	268	272	284	299	310	324



8701



8708

Lounge

MODEL	Price
8801	800
8808	935

Dimensions (inches)

seat H	17.25	seat W	23.0	arm H	25.0	total H	29.50
depth	27.0	total W (no arms)	26.0	total W (arms)	27.0		

Optional Seat Cushion - Lounge

COM 0.25 yd

COM	GR1	GR2	GR3	GR4	GR5	GR6
273	288	292	304	319	330	344



8801



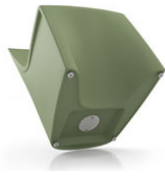
8808



BEHAVIORAL HEALTH & HEAVY DUTY Specialty Seating HARDI

Standard Features

- Single-piece roto-molded design
- Meets seating durability test to 500 lbs per chair
- CAL 133 compliant
- Material compound contains UV stabilizers
- Select from 6 standard colors, which have been selected from our palette of standard Spectone finishes
- Standard without glides
- Dining ships 1/carton 14 cu ft, Lounge ships 1/carton 16 cu ft
- Removable threaded cap is fastened with tamperproof fasteners. Sand (not included) can be added on site for additional weight and ballast utilizing the plastic bag from packaging. Contact Customer Service for more information



Options

- Upholstered seat cushion, see below for pricing
- Four nickel-plated non-removable nylon glides secured with LOCTITE®, add \$25 List
- Ganging is available. Please specify a set of nickel-plated non-removable nylon glides secured with LOCTITE for each chair that you want to gang together (\$25 List per chair), and add Q-1 ganging kits (\$43 List)
In other words, to gang 9 chairs together, please order 9 sets of glides and 8 ganging kits
- Floor mounting is available. Please specify a set of nickel-plated non-removable nylon glides secured with LOCTITE for each chair that you want to mount to the floor (\$25 List per chair), and add the same amount of floor mounting kits (\$43 List). In other words, to floor mount 9 chairs, please order 9 sets of glides and 9 floor mounting kits



Club

MODEL **8809** Price **1115**

Dimensions (inches)							
seat H	17.25	seat W	23.0	arm H	25.0	total H	29.50
depth	27.0	total W	27.0				



8809

Optional Seat Cushion - Club

COM 0.25 yd

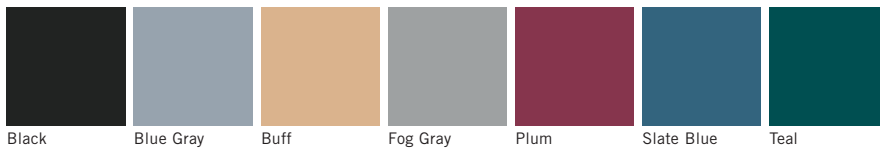
COM	GR1	GR2	GR3	GR4	GR5	GR6
273	288	292	304	319	330	344



BEHAVIORAL HEALTH & HEAVY DUTY Specialty Seating HARDI

Standard Features

- Single-piece injection-molded design
- Wallsaving
- CAL 133 compliant
- Select from 7 standard colors
- Stackable up to 15 high
- Can be floor mounted with hardware of your choice
- 10 year warranty
- Chair ships 1/carton 10 cu ft, 2-6/carton 16 cu ft.
Dolly (dark brown only) ships 1/carton 6 cu ft
- Produced by Cortech USA



Stacker

MODEL Price
8810 195

Dimensions (inches)
seat H 18.50 seat W 18.50 total H 30.0
depth 21.0 total W 20.50



8810

Stacker Dolly

MODEL Price
8810-99 747

Dimensions (inches)
total H 52.0 depth 34.0 total W 18.0
weight 24 lbs



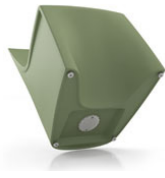
BEHAVIORAL HEALTH & HEAVY DUTY Specialty Seating HARDI

Standard Features

- Single-piece roto-molded design
- Meets seating durability test to 500 lbs per chair
- CAL 133 compliant
- Material compound contains UV stabilizers
- Select from 6 standard colors, which have been selected from our palette of standard Spectone finishes
- Rocker ships 1/carton 26 cu ft
- Removable threaded cap is fastened with tamperproof fasteners. Sand (not included) can be added on site for additional weight and ballast utilizing the plastic bag from packaging. Contact Customer Service for more information

Options

- Upholstered seat cushion, see below for pricing



Rocker

MODEL **8840** Price **1593**

Dimensions (inches)

seat H	18.25	seat W	20.0	arm H	25.0	total H	37.5
depth	33.75	total W	28.0				



8840

Optional Seat Cushion - Rocker

COM 0.25 yd

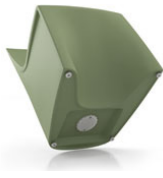
COM	GR1	GR2	GR3	GR4	GR5	GR6
240	255	259	271	286	297	311



BEHAVIORAL HEALTH & HEAVY DUTY Specialty Seating HARDI

Standard Features

- Single-piece roto-molded design
- CAL 133 compliant
- Material compound contains UV stabilizers
- Select from 6 standard colors, which have been selected from our palette of standard Spectone finishes
- Standard without glides
- Stool ships 1/carton 4 cu ft, chair ships 1/carton 6 cu ft
- Removable threaded cap is fastened with tamperproof fasteners. Sand (not included) can be added on site for additional weight and ballast utilizing the plastic bag from packaging. Contact Customer Service for more information



Options

- Upholstered seat cushion for Children's Dining chair only, see below for pricing
- Nickel-plated non-removable nylon glides secured with LOCTITE®, add \$25 List
- Floor mounting is available. Please specify a set of nickel-plated non-removable nylon glides secured with LOCTITE for each stool that you want to mount to the floor (\$25 List per stool), and add the same amount of floor mounting kits (\$43 List). In other words, to floor mount 9 stools, please order 9 sets of glides and 9 floor mounting kits



Stool

MODEL	Price
8901	528

Dimensions (inches)

seat H	18.0	seat W	16.0
total H	18.0	total W	17.5



8901

Children's Dining

MODEL	Price
8702	697

Dimensions (inches)

seat H	15.0	seat W	18.0	total H	27.0
depth	20.5	total W (no arms)	18.0		



8702

Optional Seat Cushion - Children's Dining

COM 0.25 yd

COM	GR1	GR2	GR3	GR4	GR5	GR6
280	295	299	311	326	337	351



BEHAVIORAL HEALTH & HEAVY DUTY Specialty Seating

MIDWAY HD

Standard Features

- Separate seat and back
- Meets seating durability test to 500 lbs per chair
- Polyurethane arms
- Fully welded 1.25" frame with glides
- Added weight, Sled base
- Frame in any Spectone color
- Steel glides secured with LOCTITE®
- Tamperproof hardware
- Zippered covers glued shut, pulls removed
- Ships assembled
- Ships 1/carton 17 cu ft

Options

- Polyurethane arms available in Black, Sterling Grey or Taupe (RAL 7006)
- Four white nylon caps can be added to prevent rust in areas with frequent cleaning/mopping. Add \$20 List
- Floor mounting glides, add \$57 List/chair
- Antibacterial and antimicrobial fabrics available
- Different fabric on seat and back for no extra charge
- CAL 133

Contact Spec™ Customer Service to railroad fabrics (specify repeat info and yardage requirement will be provided) and for repeats greater than 5" x 5"



Midway HD Single Seater with arms – Sled Base

COM 1.5 yds
 0.5 yd COM per single seat
 1.0 yd COM per single back

MODEL	COM	GR 1	GR 2	GR 3	GR 4	GR 5	GR 6
3201UHD	1744	1885	1934	2025	2164	2273	2416

Dimensions (inches)

seat H	18.0	seat W	20.5	arm H	26.0
total H	36.0	total W	23.75	depth	26.0

CAL 133, add \$151 List per seat



3201UHD
48 lbs

Midway HD Highback with arms – Sled Base

COM 1.6 yds
 0.5 yd COM per single seat
 1.1 yds COM per single back

MODEL	COM	GR 1	GR 2	GR 3	GR 4	GR 5	GR 6
3201HHD	1893	2039	2089	2183	2330	2441	2587

Dimensions (inches)

seat H	18.0	seat W	20.5	arm H	26.0
total H	46.0	total W	23.75	depth	26.0

CAL 133, add \$190 List per chair



3201HHD
50 lbs



BEHAVIORAL HEALTH & HEAVY DUTY Specialty Seating

MIDWAY HD

Standard Features

- Separate seat and back
- Meets seating durability test to 750 lbs per chair
- Polyurethane arms
- Fully welded 1.25" frame with glides
- Added weight, Sled base
- Frame in any Spectone color
- Steel glides secured with LOCTITE®
- Tamperproof hardware
- Zippered covers glued shut, pulls removed
- Ships assembled
- Ships 1/carton 17 cu ft

Options

- Polyurethane arms available in Black, Sterling Grey or Taupe (RAL 7006)
- Four white nylon caps can be added to prevent rust in areas with frequent cleaning/mopping. Add \$20 List
- Floor mounting glides, add \$57 List/chair
- Antibacterial and antimicrobial fabrics available
- Different fabric on seat and back for no extra charge
- CAL 133

Contact Spec Customer Service to railroad fabrics (specify repeat info and yardage requirement will be provided) and for repeats greater than 5" x 5"



Midway HD Bariatric with arms – Sled Base

COM 2.55 yds
 0.8 yd COM per single seat
 1.75 yd COM per single back

MODEL	COM	GR 1	GR 2	GR 3	GR 4	GR 5	GR 6
3201GHD	2271	2476	2547	2681	2888	3043	3253

Dimensions (inches)

seat H	18.0	seat W	30.0	arm H	26.0
total H	36.0	total W	32.75	depth	26.0



3201GHD
56 lbs

CAL 133, add \$260 List per seat



BEHAVIORAL HEALTH & HEAVY DUTY Specialty Seating

SNOWBALL 2 HD

Standard Features

- 0.875" frame
- Meets seating durability test to 500 lbs per chair
- Added weight, Sled base
- Frame in any Spectone color
- Steel glides secured with LOCTITE®
- Tamperproof hardware
- Does not stack
- Ships 1/carton 11 cu ft
- Staples on the bottom of the seat are covered by a 100% recycled plastic seat pan

Options

- Four white nylon caps can be added to prevent rust in areas with frequent cleaning/mopping. Add \$20 List
- Floor mounting glides, add \$57 List/chair
- CAL 133

Contact Spec Customer Service to railroad fabrics (specify repeat info and yardage requirement will be provided) and for repeats greater than 5" x 5"



Snowball 2 HD Armless – Sled Base

COM 1.0 yd
0.5 yd COM per single seat
0.5 yd COM per single back

MODEL	COM	GR 1	GR 2	GR 3	GR 4	GR 5	GR 6
1891HD	784	849	874	918	983	1032	1102

Dimensions (inches)

	seat H	18.0	seat W	18.5	depth	21.5
total H	33.0		total W	20.25		

CAL 133, add \$73 List per chair
1" extra seat foam, specify and add \$18 List



1891HD
44 lbs

Snowball 2 HD with Steel Arms – Sled Base

COM 1.0 yd
0.5 yd COM per single seat
0.5 yd COM per single back

MODEL	COM	GR 1	GR 2	GR 3	GR 4	GR 5	GR 6
1881HD	839	903	928	971	1035	1088	1152

Dimensions (inches)

	seat H	18.0	seat W	18.5	depth	21.5
total H	33.0		total W	23.5		

CAL 133, add \$73 List per chair
1" extra seat foam, specify and add \$18 List



1881HD
45 lbs



BEHAVIORAL HEALTH & HEAVY DUTY Specialty Seating

TAILOR HD SLED

Standard Features

- Single-sewn seat and back
- Sled base
- Meets seating durability test to 500 lbs per chair
- Staples on the bottom of the seat are covered by a single-piece metal pan that is welded to the frame, covering the underside
- Tamper resistant fastenings
- Clear, non-marring glides
- Ships assembled
- Ships 1 chair per carton, 24 cu ft

Options

- Antibacterial and antimicrobial fabrics available
- CAL 133

Contact Spec Customer Service to railroad fabrics (specify repeat info and yardage requirement will be provided) and for repeats greater than 5" x 5"



Tailor HD Sled Single Seat Without Arms

COM 2.75 yds

MODEL	COM	GR 1	GR 2	GR 3	GR 4	GR 5	GR 6
9101MHD-SLED-NA	1554	1741	1802	1931	2121	2267	2460

Dimensions (inches)

seat H	18.0	seat W	23.0				
total H	33.0	total W	23.0	total D	29.0		

CAL 133, add \$ **265** List per unit



9101MHD-SLED-NA
77 lbs





BEHAVIORAL HEALTH & HEAVY DUTY Specialty Seating

TAILOR HD ROTO

Standard Features

- Separate seat and back
- Meets seating durability test to 750 lbs per single seat chair, and to 750 lbs per single seat bariatric chair
- A single-piece metal pan is welded to the frame, covering the underside of both seat and back, and therefore eliminating pass-through. Perforations in the metal pan allow for drainage
- Wall-saving frame
- Roto-molded foot in RAL 7037
- Metal stretcher under seat in any Spectone finish
- Tamper proof fastenings
- Ships assembled
- Ships 1 single seat per carton, 24 cu ft
- Ships 1 bariatric seat per carton, 32 cu ft

Options

- Polyurethane arm caps available in Black (B), Taupe RAL 7006 (T) or Sterling Grey (G), add \$140 List per arm
- Nickel-plated non-removable nylon glides secured with LOCTITE®, add \$28 List
- Roto-molded inserts to close the gap under the seat, add \$458 List for 9101MHD, and \$698 List for 9101GHD. Retrofittable in the field. Standard in RAL 7037.
- Single-sewn seat and back, add \$100 List
- Floor mounting straps available, call Customer Service
- Up to 40 lbs of additional weight per seat is available, call Customer Service
- Upholstered arms/seat/back can match or contrast
- Antibacterial and antimicrobial fabrics available
- CAL 133

Contact Spec Customer Service to railroad fabrics (specify repeat info and yardage requirement will be provided) and for repeats greater than 5" x 5"



Optional inserts eliminate pass through under the chair



Tailor HD Roto Single Seat With Arms

COM 4.75 yds
 1.25 yds COM per single seat
 1.5 yds COM per single back
 1.0 yds COM per arm

MODEL	COM	GR 1	GR 2	GR 3	GR 4	GR 5	GR 6
9101MHD	2145	2463	2568	2789	3113	3360	3690

Dimensions (inches)

seat H	18.0	seat W	23.0	arm H	24.5
total H	33.0	total W	29.0	total D	30.0

CAL 133, add \$456 List per unit



9101MHD
119 lbs

Tailor HD Roto Bariatric With Arms

COM 5.5 yds
 1.5 yds COM per single seat
 2.0 yds COM per single back
 1.0 yds COM per arm

MODEL	COM	GR 1	GR 2	GR 3	GR 4	GR 5	GR 6
9101GHD	2385	2756	2878	3135	3515	3805	4189

Dimensions (inches)

seat H	18.0	seat W	30.0	arm H	24.5
total H	33.0	total W	36.0	total D	30.0

CAL 133, add \$531 List per unit



9101GHD
133 lbs



BEHAVIORAL HEALTH & HEAVY DUTY Specialty Seating

TAILOR HD ROTO

Standard Features

- Separate seat and back
- Meets seating durability test to 450 lbs per two seater, and to 675 lbs per three seater
- A single-piece metal pan is welded to the frame, covering the underside of both seat and back, and therefore eliminating pass-through. Perforations in the metal pan allow for drainage
- Wall-saving frame
- Roto-molded foot in RAL 7037
- Metal stretcher under seat in any Spectone finish
- Tamper proof fastenings
- Ships assembled
- Ships 1 two seat per carton, 43 cu ft
- Ships 1 three seat per carton, 62 cu ft

Options

- Polyurethane arm caps available in Black (B), Taupe RAL 7006 (T) or Sterling Grey (G), add \$140 List per arm
- Nickel-plated non-removable nylon glides secured with LOCTITE®, add \$28 List
- Floor mounting straps available, call Customer Service
- Up to 40 lbs of additional weight per seat is available, call Customer Service
- Upholstered arms/seat/back can match or contrast
- Antibacterial and antimicrobial fabrics available
- CAL 133

Contact Spec Customer Service to railroad fabrics (specify repeat info and yardage requirement will be provided) and for repeats greater than 5" x 5"



Tailor HD Roto Two Seat With Arms

COM 7.5 yds
 2.5 yds COM per two seater one-piece seat
 3.0 yds COM per two seater two-piece back (1.5 yds COM per single back)
 1.0 yds COM per arm

MODEL	COM	GR 1	GR 2	GR 3	GR 4	GR 5	GR 6
9102MHD	3151	3647	3809	4152	4655	5039	5552

Dimensions (inches)

seat H	18.0	seat W	23.0	arm H	24.5
total H	33.0	total W	52.0	total D	30.0

CAL 133, add \$722 List per unit



9102MHD
175 lbs

Tailor HD Roto Three Seat With Arms

COM 10.25 yds
 3.75 yds COM per three seater one-piece seat
 4.5 yds COM per three seater three-piece back (1.5 yds COM per single back)
 1.0 yds COM per arm

MODEL	COM	GR 1	GR 2	GR 3	GR 4	GR 5	GR 6
9103MHD	4208	4879	5100	5563	6249	6771	7466

Dimensions (inches)

seat H	18.0	seat W	23.0	arm H	24.5
total H	33.0	total W	75.0	total D	30.0

CAL 133, add \$990 List per unit



9103MHD
231 lbs



BEHAVIORAL HEALTH & HEAVY DUTY Specialty Seating TRAFFIC DINING

Standard Features

- Meets seating durability test to 500 lbs per chair
- Tabletop standard in Laminate with PVC Flat (PVF), 2MM or Self Edge (SE)
- Select from 15 standard laminates or choose any standard Wilsonart, Nevamar, Formica, Arborite and Pionite matte finish laminates for no extra charge. For other laminate please contact the factory for pricing.
- PVC Flat edge and 2mm Bio edge available in 38 solid colors. 2mm PVC edge available in wood grain to match 9 standard stains.
- Floor Mounting plates
- Tamperproof fasteners
- Welded steel end caps

Options

- 30" Bariatric seats are available. Contact factory for pricing
- Coated steel tabletop available. Contact factory for pricing
- CAL 133

Contact Spec Customer Service to railroad fabrics (specify repeat info and yardage requirement will be provided) and for repeats greater than 5" x 5"



Traffic Dining without arms, without upholstered cushions

N/A COM per single seat

MODEL	PRICE
7100NHD	Temporary surcharge, call for pricing

Dimensions (inches)

seat H	18.0	seat W	22.0	table top	30x48	table H	29.0
total H	33.75	total W	48.0	seat depth	17.0	total depth	74

Traffic Dining without arms, with upholstered cushions

0.75 yd COM per single seat and back

MODEL	COM	GR 1	GR 2	GR 3	GR 4	GR 5	GR 6
7100UHD	Temporary surcharge, call for pricing						

Dimensions (inches)

seat H	18.0	seat W	22.0	table top	30x48	table H	29.0
total H	33.75	total W	48.0	seat depth	17.0	total depth	74

CAL 133, add \$1220 List per unit





BEHAVIORAL HEALTH & HEAVY DUTY Specialty Seating

1000 SERIES HD

Standard Features

- One piece seat and back
- Meets seating durability test to 500 lbs per chair
- Fully welded 1.25" frame
- Added weight, Sled base
- Frame in any Spectone color
- Steel glides secured with LOCTITE®
- Tamperproof hardware
- Zippered covers glued shut, pulls removed
- Ships assembled
- Ships 1/carton 15 cu ft

Options

- Four white nylon caps can be added to prevent rust in areas with frequent cleaning/mopping. Add \$20 List
- Floor mounting glides, add \$57 List/chair
- CAL 133

Contact Spec Customer Service to railroad fabrics (specify repeat info and yardage requirement will be provided) and for repeats greater than 5" x 5"



1000 Series HD Armless Medium Back – Sled Base

1.25 yds COM per single seat and back

MODEL	COM	GR 1	GR 2	GR 3	GR 4	GR 5	GR 6
1014HD	1398	1496	1518	1579	1666	1736	1824

Dimensions (inches)

seat H	18.0	seat W	18.5	depth	22.0
total H	33.0	total W	18.5		

CAL 133, add \$102 List per chair



1014HD
46 lbs



BEHAVIORAL HEALTH & HEAVY DUTY Specialty Seating

2000 SERIES HD

Standard Features

- Fully welded 1.5" frame
- Meets seating durability test to 500 lbs per chair
- Added weight, Sled base
- Frame in any Spectone color
- Steel glides secured with LOCTITE®
- Tamperproof hardware
- Zippered covers glued shut, pulls removed
- Ships assembled
- Ships 1/carton 17 cu ft

Options

- Four white nylon caps can be added to prevent rust in areas with frequent cleaning/mopping. Add \$20 List
- Floor mounting glides, add \$57 List/chair
- CAL 133

Contact Spec Customer Service to railroad fabrics (specify repeat info and yardage requirement will be provided) and for repeats greater than 5" x 5"



2000 Series HD One Piece Single Seater with arms – Sled Base

COM 1.75 yds
1.75 yd COM per single seat and back

MODEL	COM	GR 1	GR 2	GR 3	GR 4	GR 5	GR 6
2201CHD	1473	1585	1624	1703	1814	1902	2019

Dimensions (inches)

seat H	18.0	seat W	22.0	arm H	26.0
total H	35.0	total W	25.0	depth	26.5

CAL 133, add \$136 List per seat



2201CHD
67 lbs