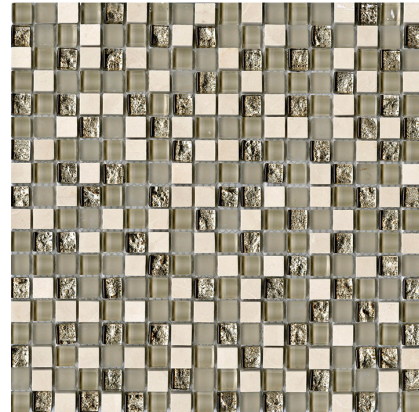


Model: ETERNITY CREAM

Codes: 100097100

Group: G-134

Format: 11 177/256"X11 177/256"X81/256" approx.



### RECOMMENDATIONS

Recommended adhesive	100201526 ONE-FLEX PREMIUM BLANCO 25KG
Recommended joint	100236794 COLORSTUK RAPID MARFIL N 5KG
Recommended joint (wet area)	No Procede
Recommended adhesive (wet area)	No Procede

### ADDITIONAL NOTES

Smaller section of the piece

### TECHNICAL INFORMATION

Water absorption	±0.5%	EN ISO 10545.2*
Crack resistance	Guaranteed	EN ISO 10545-11*
Stain resistance	5	EN ISO 10545-14*
Resistance to chemicals	GLA/GA	EN ISO 10545-13*
Use	WALL TILES	
Slip resistance (dcof)	0.29	ANSI 137.1*
Composition	MARBLE	
Composition	GLASS	

### FEATURES



Product manufactured on a mesh that makes installation easier.



Gloss-free



Material with surface with the ability to produce reflections.



Material suitable for use on indoor walls.

### PACKING

Sales units per square meter	11.337868 PIECES/M2
Sales units per box	10 PIECES/BOX
Sales units per unit	1 PIECES
Sale unit	ST
Base unit	ST
Net weight	2.87 LB/ST
Gross weight	2.97 LB/ST

