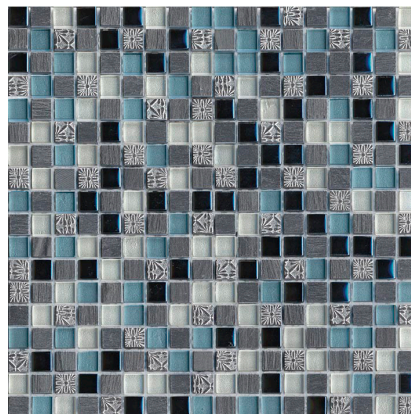


Model: IMPERIA MIX SILVER BLUE BLACKS

Codes: 100097069

Group: G-126

Format: 11 187/256"X11 187/256" approx.



RECOMMENDATIONS

Recommended adhesive	100217753 POLITECH PREMIUM COMPUESTO A + B 10KG	
Recommended joint	100236481 COLORSTUK RAPID ANTRACITA N 5KG	
Recommended joint (wet area)	100236481 COLORSTUK RAPID ANTRACITA N 5KG	100086920 FILA FOB XTREME 1L
Recommended adhesive (wet area)	100217753 POLITECH PREMIUM COMPUESTO A + B 10KG	







ADDITIONAL NOTES

Smaller section of the piece

TECHNICAL INFORMATION

Water absorption	±0.5%	EN ISO 10545.2*
Crack resistance	Guaranteed	EN ISO 10545-11*
Stain resistance	5	EN ISO 10545-14*
Resistance to chemicals	GLA/GA	EN ISO 10545-13*
Use	WALL TILES	
Slip resistance (dcof)	0.25	ANSI 137.1*
Composition	RESIN	
Composition	SLATE	
Composition	GLASS	

FEATURES

-  Product manufactured on a mesh that makes installation easier.
-  Material that stands out for having an asymmetrical surface.
-  Gloss-free
-  Material with surface with the ability to produce reflections.
-  Material suitable for use on shower walls.
-  Material suitable for use on indoor walls.

PACKING

Sales units per square meter	11.260754 PIECES/M2	
Sales units per box	11 PIECES/BOX	
Sales units per unit	1 PIECES	
Sale unit	ST	
Base unit	ST	
Net weight	2.87 LB/ST	
Gross weight	2.97 LB/ST	

