

KARASTAN

From classic craftsmanship to innovative design technology, Karastan sets an aesthetic and performance pace that others follow. Specify Karastan for your next commercial interior, and create your own legacy.



Global Attraction
Woven Broadloom Installation, color 955




Global Attraction, color 955 combined with Hot and Heavy, Secoya, color 936



Hot & Heavy Collection

Resilient Tile: Hot & Heavy, Secoya | Global Attraction

 Mohawk Group

Hot & Heavy Floating LVT lives up to its name. The bold, oversized formats are the hottest thing in flooring and are made possible due to the loose lay construction. Each jumbo tile and plank is coated with a non-skid backing that together, with the substantial weight of the product, keep tiles on the floor even under true commercial traffic. Hot & Heavy not only looks amazing, but works to reduce sound transfer and subfloor prep for a fashionable, practical commercial flooring solution.

Secoya

The 9" x 59" plank replicates a modern hardwood look and is available in a variety of textures from linear to hand-scraped. Each plank is accentuated with a beveled edge to showcase the large format. Oak and Cherry species are offered in a full range of colors for an authentic wood visual.

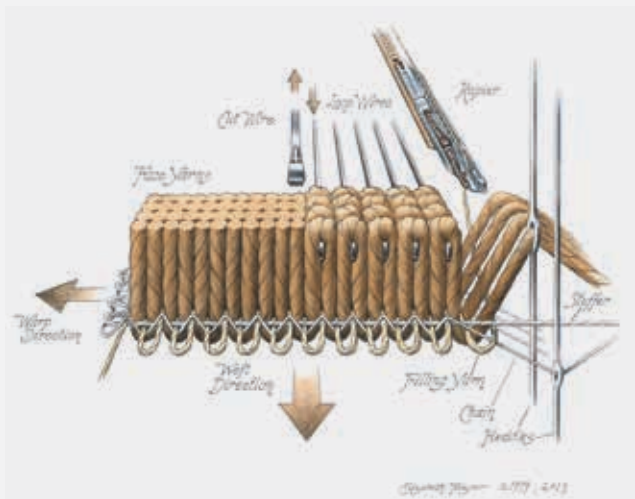
Bolder

The 36" x 36" tiles have the effect of polished concrete slabs, but install with a fraction of the time and expense. This modern format looks bold, interesting and serves to install quickly across large areas.

- Oversize formats look great and install over large areas quickly
- Commercial grade wear layer and M-Force™ Enhanced Urethane Finish
- Polish-optional maintenance
- Non-skid backing eliminates the need for adhesive
- Installs over slabs with up to 95% RH
- IIC Rating of 57 without underlayment
- Immediate move-in
- 59% Recycled Content
- FloorScore Certified
- Quickship Available

LUXURY WOSENS

Since 1928, Karastan has been a defining force in the industry—combining age-old craftsmanship with modern technology to redefine the art of weaving.



The structural and environmental strengths of woven deliver life-cycles three times greater than typical products. The art of weaving also allows for a face construction that is denser, resulting in a carpet that retains its original appearance over time. When it comes to the time-honored craft of weaving, nothing compares to Karastan for its beauty, quality and endurance.

Quixotic

Solid, all loop boadloom coordinate available in 48 colors



Lemon Twist
#131



Top Banana
#133



Sun Drift
#141



Camel Flax
#148



Cinnamon Spice
#153



Curry Powder
#163



Fresh Nutmeg
#168



Toasted Sesame
#181



Cherry Tomato
#232



Gerber Daisy
#242



On Fire
#335



Cayenne Pepper
#352



Fired Brick
#353



Tropical Berry
#385



Wild Orchid
#463



Enriched Plum
#488



Basin Blue
#535



Storm Cloud
#555



Brilliant Lapis
#565



Indigo Batik
#575



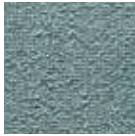
Rain Forest
#585



Night Sky
#599



Wasabi Mix
#631



Sea Glass
#635



Aqueous Spa
#655



Olive Grove
#661



Apple Green
#662



Tobacco Leaf
#691



Celery Stick
#826



Khaki Shade
#828



Mocha Latte
#838



Burley Wood
#848



Burnished Saffron
#851



Walnut Bark
#856



Tree Branch
#868



Bronzed Verde
#876



Grounded Earth
#889



Polished Concrete
#890



Dappled Silver
#925



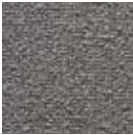
Worn Leather
#935



Volcanic Ash
#948



Galvanized Metal
#955



Charcoal Sketch
#959



Crushed Suede
#968



Wrought Iron
#979



Handcrafted
Pewter
#983



Espresso Beans
#988



Blacken Pearl
#989

WOVEN	Brand	Karastan
	Style Name / Number	Global Attraction / KC222
	Construction	Woven
	Surface Appearance	Level Patterned Cut & Loop
	Pitch	216 (315 ends per meter)
	Woven Weight	27.5 oz/yd ² (932 g/m ²)
	Dye Method	Solution Dyed / Yarn Dyed
	Fiber Type	Colorstrand® Nylon
	Stain Release Technology	Sentry Plus Stain Protection
	Soil Release Technology	Sentry Soil Protection
	Indoor Air Quality	Green Label Plus Certified # 3802
	NSF 140	Gold
	Width	12' width (3.66m)
	Pattern Repeat	4" (W) x 4" (L)
	Flammability	ASTM E 648 Class 1 (Glue Down)
	Smoke Density	ASTM E 662 Less than 450
	Static Propensity	AATCC-134 Under 3.5 KV
	Warranties: Lifetime Limited Wear Warranty, Lifetime Static	

For Quixotic and LVT spec information,
visit our website at www.mohawkgroup.com



Mohawk Industries, Inc. warrants its adhesives for the life of the original installation only when a Mohawk Industries style (product) is installed. Mohawk's floor preparation procedures must be followed to ensure that the substrate has been prepared properly. Failure to use Mohawk Industries adhesives or to follow Mohawk's floor preparation procedures will void all lifetime adhesive warranties. Please contact your local Sales Representative for installation guidelines.

These patterns contain inherent characteristics which may result in pattern run off and/or pattern appearance variations at the seams or tile edges (darker or lighter pattern lines). These characteristics are inherent in the patterns and are not manufacturing defects. Consideration to these characteristics should be given when selecting an installation method.

Chair pads are recommended under office chairs with roller casters to preserve appearance retention, act as a deterrent toward delamination and to prevent premature or accelerated wear. Walk-off tiles from the Tuff Stuff II Collection are recommended at entryways to reduce soiling.

Mohawk Group is providing this architect folder for the purpose of promoting our commercial business. This folder and its samples shall remain the property of Mohawk Group. Color may vary from dye lot to dye lot. Substitution of material may be made due to improved technology, supply limitations or other factors. The performance of this product is not affected by such variations.

For current and complete specifications please visit www.mohawkgroup.com



Timeless Today

A collection of polished greys,
from silvery mist to black smoke.







Tradition Reinvented

A collage of beiges cool and rich — white oak to charred mahogany.







Sophistication Now

Taupes composed from raw silk to aged driftwood.

