



Tuff Stuff II

First Step II Step Up II Step In Style II



First Step II 989 Obsidian (Quarter Turn Installation)



Step Up II 989 Obsidian (Quarter Turn Installation)



Step In Style II 989 Obsidian (Quarter Turn Installation)

Tuff Stuff II

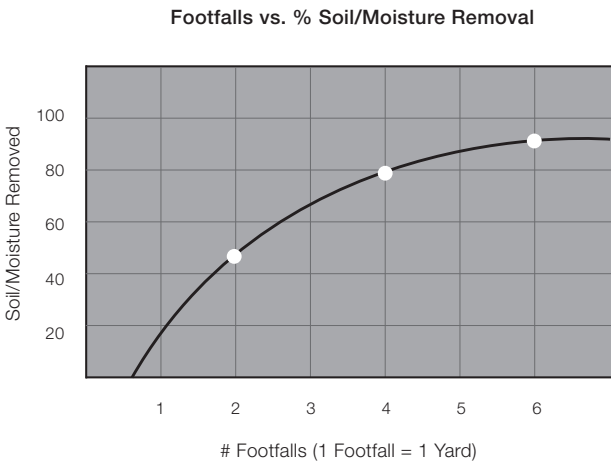
Entry Problem & Solution

Walked in soil and moisture are the main causes of premature wear and eventual replacement of floor covering. Effective placement of walk-off tiles can reduce the amount of soil and moisture entering a facility by up to 91%. This means lowered maintenance costs and extended life for all floor coverings beyond the entry. As shown in the chart below, Mohawk recommends six footfalls in each walk-off area to achieve such levels of performance.

Performance Innovations

Tuff Stuff II is designed specifically to protect facilities against excess dirt and moisture, all while providing a safe, non-slip surface in high moisture areas. Our attention to detail in construction insures that you get the highest performance entry carpet available.

- Tuff Stuff II engineering provides a Class I fire rating – a key aspect when specifying carpet for retail and general public entryways.
- The use of heavy 'scraper' yarns provides for ideal soil removal and collection. Each square yard can hold up to 5.6 lbs of sand. That's 2.4 times its normal weight.
- Tuff Stuff II's unique construction removes and absorbs up to 7.3 lbs of moisture per square yard. That's 3.07 times its normal weight.
- Tuff Stuff II carpet tiles can be easily cleaned by vacuuming or extracting. You can also remove individual tiles for cleaning or to replace damaged areas.



Tuff Stuff II makes it easy to preserve the great look of your facility by providing a continual shield against moisture and soil.



Elemental Edges

FINISHING ACCESSORIES



At Mohawk Group we believe in providing project solutions that are easy to select and readily available. Elemental Edges is a complete portfolio of free-to-ship accessories for all your flooring installation and finishing needs. The program is offered in 14 QuickShip colors that coordinate perfectly with our full suite of soft and hard surface products.

Explore more by visiting mohawkgroup.com/products/elemental-edges



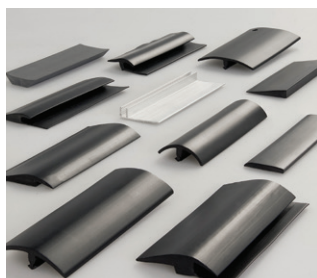
Wall Base



Seamlessly coordinate your wall base and Mohawk Group floor covering from our variety of QuickShip wall base offerings.

AVAILABLE IN

- Rubber
- Vinyl
- 4" or 6" in height
- Coved or straight
- 4' lengths or 96' & 120' rolls
- 1/8" gauge
- .080" gauge (4" Cove vinyl)



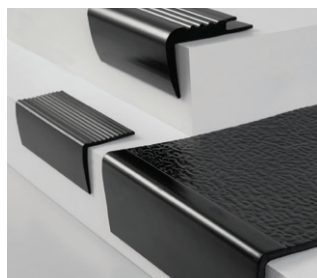
Installation Accessories



Add a functional finishing touch to your coordinated color scheme with Mohawk Group installation accessories. Proprietary Rubber formulations are shrink and crack-proof, and won't fade, even in direct sunlight.

CHOOSE FROM

- Universal Transitions
- Adaptors
- Reducers
- Cove Stick



Stair Solutions



Specify 12.5" regular tread or 20" integrated tread/riser, available in 48" and 72" lengths. Round and hammered finishes are available with standard square nose. All profiles are available with or without visually impaired strips.

CHOOSE FROM

- Stair Treads
- Risers
- Resilient Landing Tiles
- Nosings



Architectural Wall Base

Complement your space with the rich detail of Elemental Edges Architectural Wall Base, offered in a variety of designs, sizes and running line colors. Superior performance and durability allowing your project finishes to remain remarkable.

AVAILABLE IN

- 8 design profiles
- 14 color-coordinated options

Specifications

Step Up II / GT311
Step In Style II / GT312
First Step II / GT315

DESIGN

| | |
|----------------------------|--|
| Size | 24" x 24" (.6096m x .6096m) |
| Surface Appearance | |
| Step Up II | Performance Tip Shear |
| Step In Style II | Textured Performance Cut & Loop |
| First Step II | Performance Loop Pile |
| Fiber Type | Duracolor® Premium Nylon |
| Dye Method | Solution Dyed |
| Installation Methods | |
| Step Up II & First Step II | Monolithic / Quarter Turn / Brick Ashlar / Vertical Ashlar / Multi-Directional |
| Step In Style II | Quarter Turn |
| Colors Available | 4 |

PERFORMANCE

| | |
|------------------------------|----------------------------------|
| Construction | Tufted |
| Gauge | 5/32" (25.2 rows per 10cm) |
| Stain Release Technology | Permanent, Built into the Fiber |
| GSA Stain Release Technology | Passes |
| Soil Release Technology | EcoSentry Soil Protection |
| Backing Material | EcoFlex NXT |
| Flammability | ASTM E 648 - Class 1 (Glue Down) |
| Smoke Density | ASTM E 662 - Less than 450 |
| Static Propensity | AATCC - 134 Under 3.5 KV |

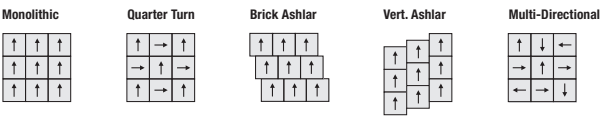
SUSTAINABILITY

| | |
|--------------------|--|
| Certification | Living Product Challenge Petal Certified; Declared |
| Indoor Air Quality | Green Label Plus Certified #1171 |
| NSF 140 | Gold |
| Carbon | Net Positive Carbon (Neutral +5%) |
| Water | Net Positive Water (Neutral +5%) |

SERVICE

| | |
|------------|---|
| Warranties | Lifetime Limited Carpet Tile Warranty, Lifetime Limited Duracolor Stain Warranty, Lifetime Static |
|------------|---|

Installation Instructions:



Mohawk Group warrants its adhesives for the life of the original installation only when a Mohawk Group style (product) is installed. Mohawk's floor preparation procedures must be followed to ensure that the substrate has been prepared properly. Failure to use Mohawk Group adhesives or to follow Mohawk's floor preparation procedures will void all lifetime adhesive warranties. Please contact your local Sales Representative for installation guidelines.

These patterns contain inherent characteristics which may result in pattern run off and/or pattern appearance variations at the seams or tile edges (darker or lighter pattern lines). These characteristics are inherent in the patterns and are not manufacturing defects. Consideration to these characteristics should be given when selecting an installation method.

Chair pads are recommended under office chairs with roller casters to preserve appearance retention, act as a deterrent toward delamination and to prevent premature or accelerated wear. Walk-off tiles from the Tuff Stuff II Collection are recommended at entryways to reduce soiling.

Duracolor by Mohawk Stain Resistant System passes AATCC Test Method 175 combined with pre-abrasion meeting GSA requirements for stain resistance. Under GSA requirements stain resistant carpets must score no less than 8.0 (10.0 is best) on the AATCC Red 40 Stain Scale. Carpet samples must first be exposed to 100 revolutions of the

Taber abrader (1,000-gram weight per H-18 wheel) and then the abraded area must be stain tested using AATCC tested using AATCC test method 175.

Mohawk Group is providing this architect folder for the purpose of promoting our commercial business. This folder and its samples shall remain the property of Mohawk Group. Color may vary from dye lot to dye lot. Substitution of material may be made due to improved technology, supply limitations or other factors. The performance of this product is not affected by such variations.

For current and complete specifications please visit www.mohawkgroup.com



