

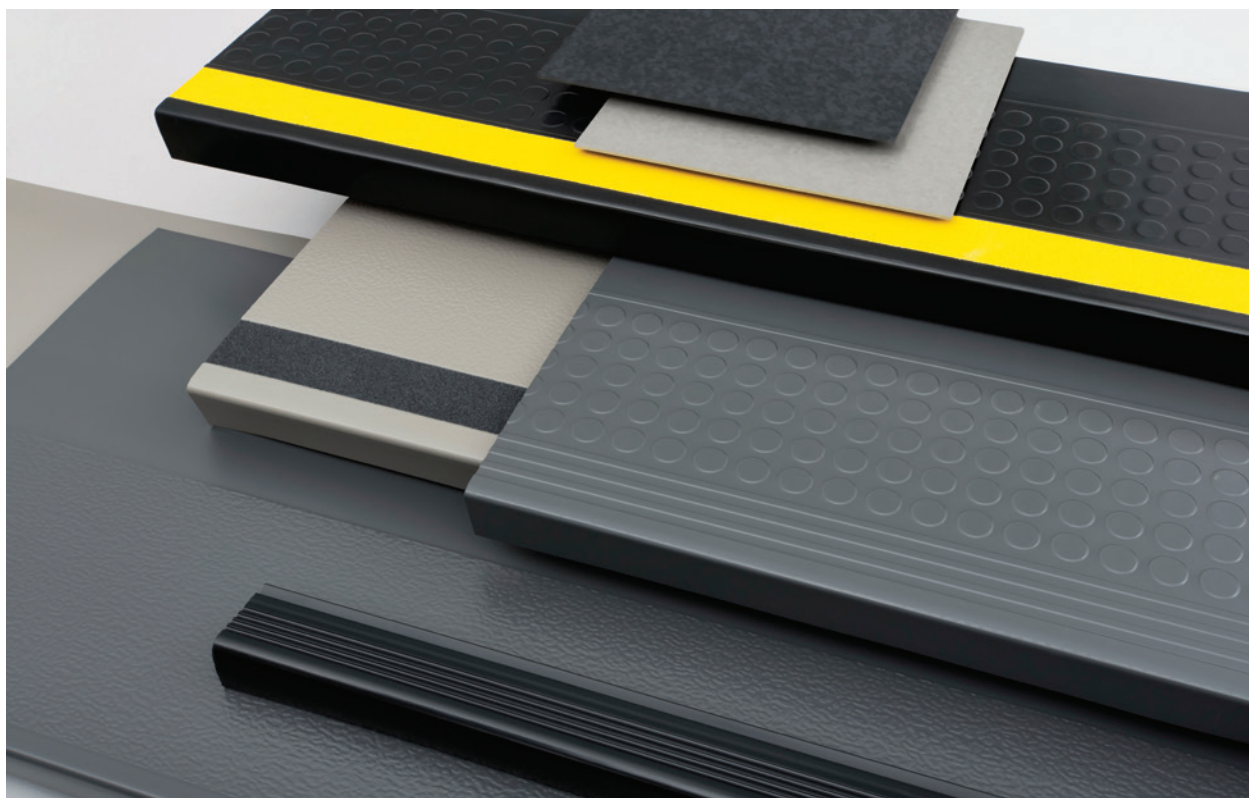


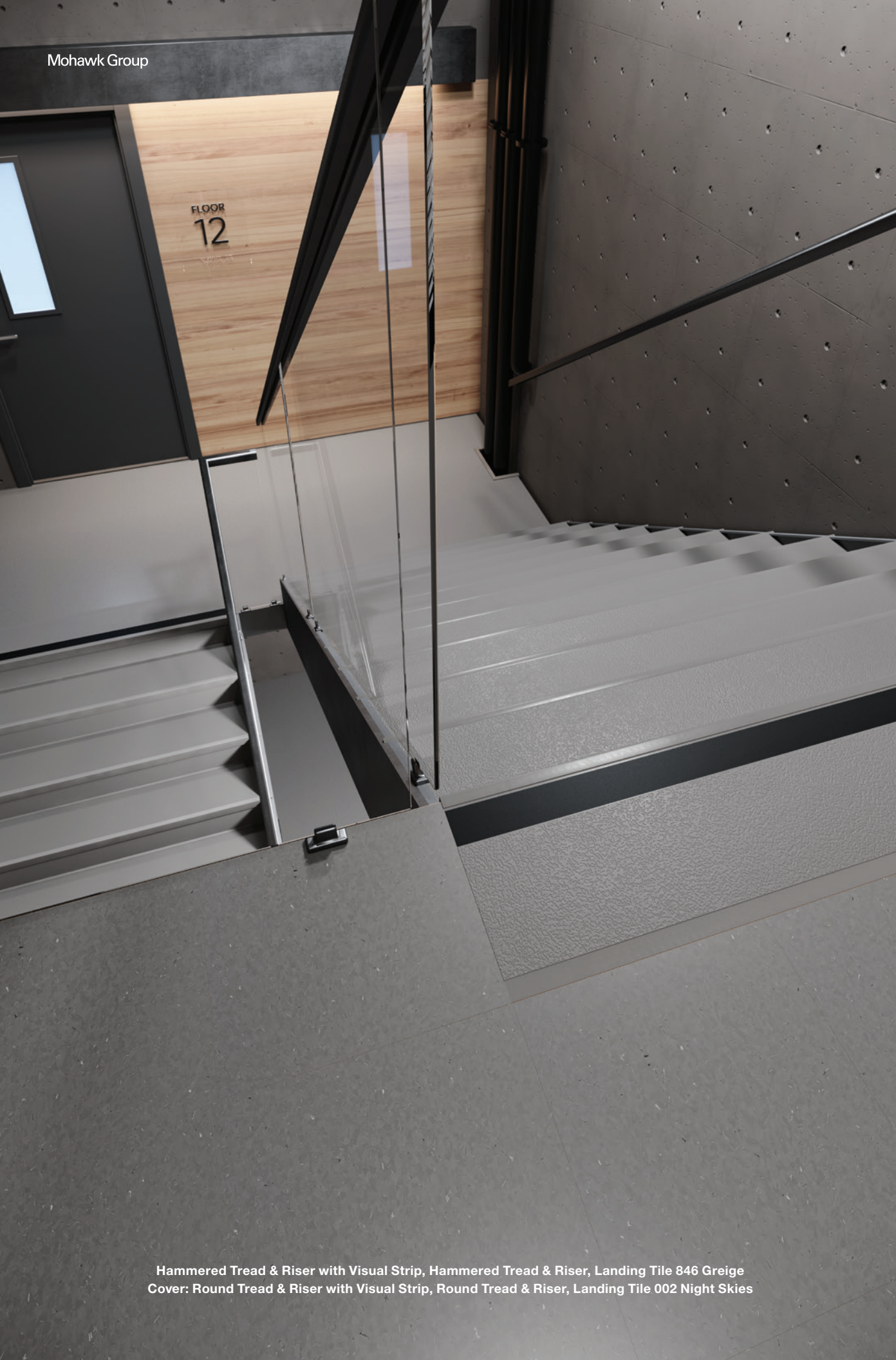
Elemental Edges

Stair Treads



Stair Treads within the Elemental Edges program offer a complete stair solution for commercial applications. These products are available in multiple formats and colorways that are tailored to fit your project's needs. Select from Regular Stair Treads or Integrated Tread and Riser, Hammered and Round profiles, optional Visual Strip, and a line of coordinating accessories. With a rugged commercial grade rubber that masks subfloor irregularities and a textured underside that optimizes adhesion, Mohawk Group's Stair Treads help create and drive high-performing, long-lasting surfaces for entry ways, stairwells and beyond.

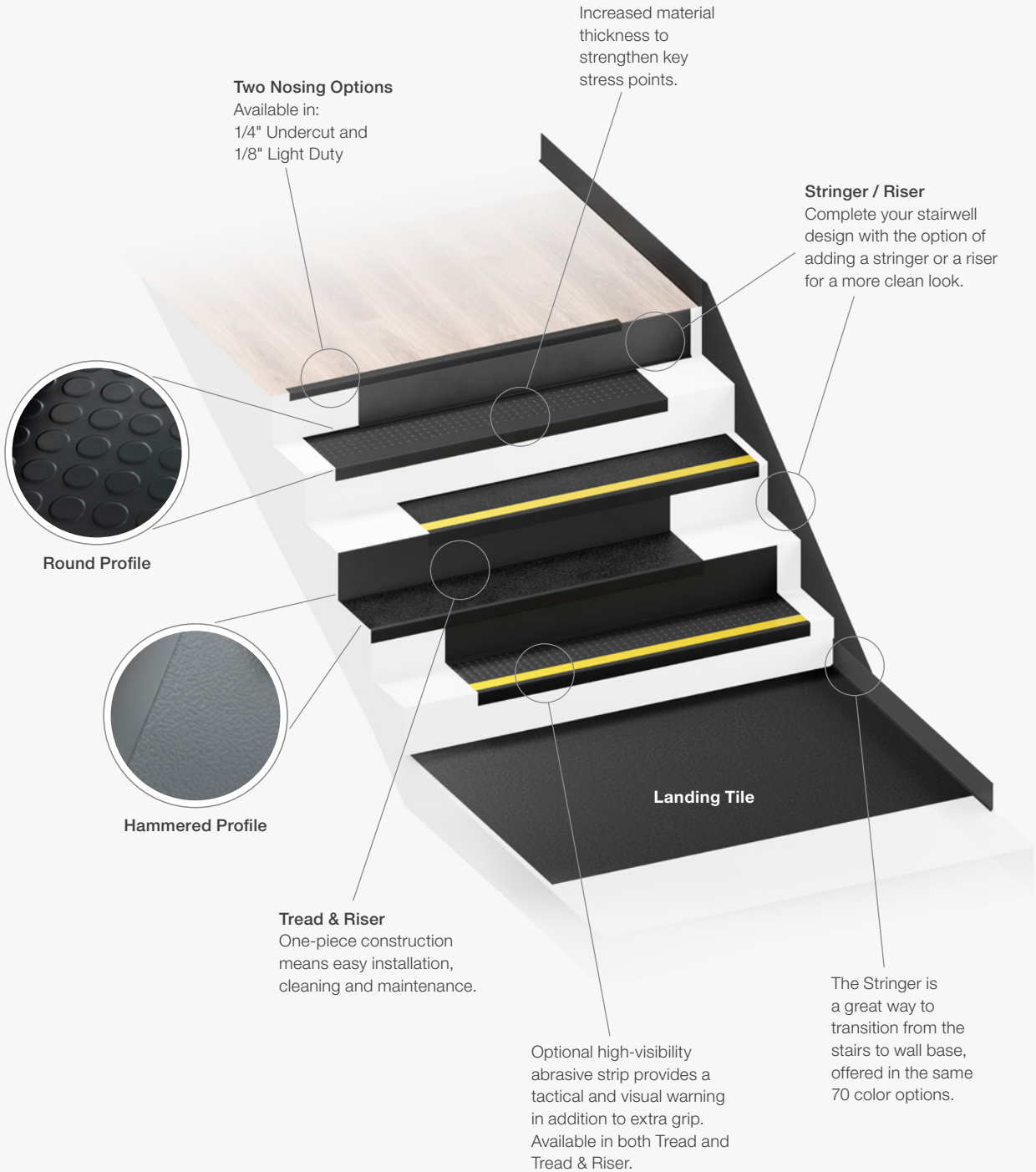




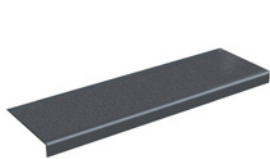
Hammered Tread & Riser with Visual Strip, Hammered Tread & Riser, Landing Tile 846 Greige
Cover: Round Tread & Riser with Visual Strip, Round Tread & Riser, Landing Tile 002 Night Skies



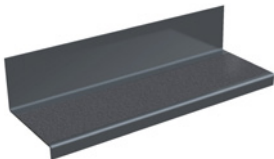
Rubber Stair Treads



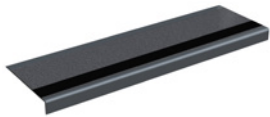
Hammered Stair Treads



CRS01
Regular Stair Treads



CRS02
Stair Treads with Riser

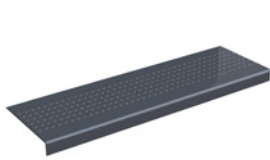


CRS03
Stair Treads with Visual Strip

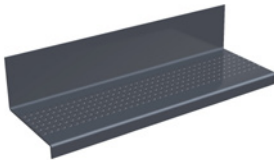


CRS04
Stair Treads with Riser and Visual Strip

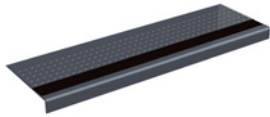
Round Stair Treads



CRS05
Regular Stair Treads



CRS06
Stair Treads with Riser

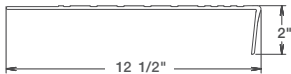


CRS07
Stair Treads with Visual Strip

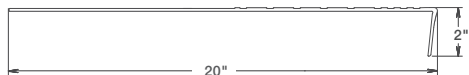


CRS08
Stair Treads with Riser with Visual Strip

Regular Stair Treads



Stair Treads with Riser



HOW TO ORDER:

- 1. Select product code, e.g.: CRS01
- 2. Select Color e.g.: CRS01-002
- 3. Select Length e.g.: CRS01-002-48"

Black visually impaired strip available on all stair tread colors, except 002 Night Skies which is available with yellow.



Stairwell Finishes

The Stringer/Riser combo is a 24' x 10 1/4" piece that can be used as either a Stringer on a wall transitioning to your wall base or a Riser to pair with Treads. Both applications can be achieved by trimming the material to fit your unique design.

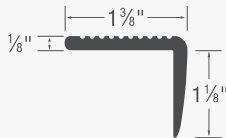
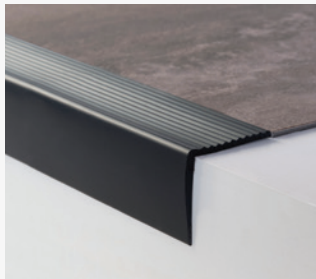


CRS09
24' X 10 1/4" with
3/8" toe X .080" Gauge

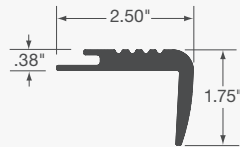
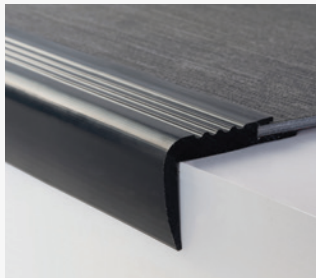
Stairwells are the #1 trip hazard in every building. Selecting the correct nosing can reduce the chance of accidents, injury and unnecessary cost.

HOW TO ORDER:

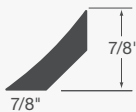
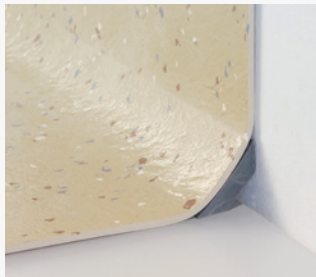
1. Select product code,
e.g.: CRS11
2. Select Color
e.g.: CRS11-002



CRS11
1/8" LIGHT DUTY NOSING



CRS12
1/4" UNDERCUT NOSING



CRA11
COVE STICK
AVAILABLE IN NEUTRAL COLOR ONLY

Landing Tiles

Product: CRS10
Composition: Homogeneous Solid Vinyl
Size: 18" x 18"
Thickness: 1/8" (3 mm)
Installation: Glue Down

Slip Resistance	ASTM D2047 ≥ 0.5
Resistance to Heat	ASTM F1515 - $\Delta E \leq 8$
Resistance to Light	ASTM F1514 - $\Delta E \leq 8$
Critical Radiant Flux	ASTM E648 ≥ 0.45
Smoke Density	ASTM E662 < 450



PERFORMANCE
Superior durability on high-traffic stairways. No wear layer, solid color all the way through.



COLOR MATCH
Elemental Edges' Landing Tiles coordinate beautifully with Stair Treads and our full suite of Elemental Edges Accessories.



MADE IN THE USA
Landing Tiles are made in the USA, offering industry-leading serviceability and supporting our local economies.



Landing Tile 846 Greige



QUICKSHIP COLORWAYS

				
Night Skies 002	Dove 053	Buff 063	Aircraft Carrier 073	Gunmetal 083
				
Deep Chestnut 084	Black Brown 099	Navy 566	White 717	Cream 731
				
Greige 846	Khaki 852	Smoke 955	Charcoal 958	

Colorways

				
Camel 123	Sand 131	Pale Earth 132	Tan 137	Mustard 168
				
Toast 238	Merrigold 241	Deep Rose 348	Berry 364	Red 365
				
Paprika 368	Plum 374	Mulberry 458	Lavendar Gray 459	Cloudy 549
				
Indigo 556	Dark Teal 559	Azure 564	Sky 565	Storm Blue 569

Colorways

				
Midnight Blue 575	Minty 621	Pale Olive 641	Cool Mint 645	Pistachio 646
				
Leaf 651	Jade 656	Grass 661	Sage 665	Army Green 668
				
Olive 669	Forest Green 675	Ivy Green 689	Shell 721	Dune 722
				
Satin 725	Grayish 726	Ice Gray 735	Silver Gray 745	Winter Gray 748
				
Clay 822	Ash Brown 836	Ashen 839	Dust 842	Sable 843
				
Earth 847	Auburn 853	Chocolate 863	Cherry Wood 873	Dark Chocolate 883
				
Charcoal Brown 889	Fog 928	Shadow 945	Slate 965	Pepper Gray 966
				
Matte Black 984				

Minimum order quantity required for non-Quickship colors.



Elemental Edges

FINISHING ACCESSORIES

At Mohawk Group we believe in providing project solutions that are easy to select and readily available. Elemental Edges is a complete portfolio of free-to-ship accessories for all your flooring installation and finishing needs. The program is offered in 14 QuickShip colors that coordinate perfectly with our full suite of soft and hard surface products.



Wall Base

Seamlessly coordinate your wall base and Mohawk Group floor covering from our variety of QuickShip wall base offerings.

AVAILABLE IN

- Rubber
- Vinyl
- 4" or 6" in height
- Coved or straight
- 4' lengths or 96' & 120' rolls
- 1/8" gauge
- .080" gauge (4" Cove vinyl lengths only)



Installation Accessories

Add a functional finishing touch to your coordinated color scheme with Mohawk Group installation accessories. Proprietary Rubber formulations are shrink and crack-proof, and won't fade, even in direct sunlight.

CHOOSE FROM

- Universal Transitions
- Reducers
- Adaptors
- Cove Stick



Specifications

Elemental Edges
Stair Treads

DESIGN

Size	
Treads	Length: 48" (1.219m) / 72" (1.829m) Width: 12.5" (317.5mm) Nosing Depth: 2" (50.8mm) ADA compliant Nosing Radius: 1/4" (6mm) ADA compliant
Treads with Risers	Length: 48" (1.219m) / 72" (1.829m) Width: 20" (508mm) Nosing Depth: 2" (50.8mm) ADA compliant Nosing Radius: 1/4" (6mm) ADA compliant
Overall Gauge	.125" (1/8")
Colors Available	
Quickship	14
Made to Order	56

PERFORMANCE

Classification	ASTM F2169 Resilient Stair Treads Type TP, Class 2 Group 1 & 2 (Visually Impaired Safety Strip)
Resistance to Chemicals	ASTM F925 - Passes, No More Than Slight Changes
Resistance to Light	ASTM F1515 - Passes, ΔE = 4.2
Resistance to Heat	ASTM F1514 - Passes, ΔE = 4.8
Critical Radiant Flux	ASTM E648 - ≥ 0.45
Smoke Density	ASTM E662 - < 450
Slip Resistance	ASTM D2047 SCOF ≥ 0.64
Hardness	ASTM D2240 95 Shore A

SUSTAINABILITY

Certification	FloorScore® Certified
---------------	-----------------------

For detailed warranty, installation and adhesive information visit mohawkgroup.com

Mohawk Group warrants its adhesives for the life of the original installation only when a Mohawk Group style (product) is installed. Mohawk's floor preparation procedures must be followed to ensure that the substrate has been prepared properly. Failure to use Mohawk Group adhesives or to follow Mohawk's floor preparation procedures will void all lifetime adhesive warranties. Please contact your local Sales Representative for installation guidelines.

These patterns contain inherent characteristics which may result in pattern run off and/or pattern appearance variations at the seams or tile edges (darker or lighter pattern lines). These characteristics are inherent in the patterns and are not manufacturing defects. Consideration to these characteristics should be given when selecting an installation method.

Chair pads are recommended under office chairs with roller casters to preserve appearance retention, act as a deterrent toward delamination and to prevent premature or accelerated wear. Walk-off tiles from the Tuff Stuff II Collection are recommended at entryways to reduce soiling.

Mohawk Group is providing this architect folder for the purpose of promoting our commercial business. This folder and its samples shall remain the property of Mohawk Group. Color may vary from dye lot to dye lot. Substitution of material may be made due to improved technology, supply limitations or other factors. The performance of this product is not affected by such variations.

For current and complete specifications please visit www.mohawkgroup.com

recover

carpet recycling program

877-3RE-CYCL



Produced with recycled materials

