





Enthralled II | 974 Fulfilled
Monolithic Installation



Amused II | 959 Refreshed
Herringbone Installation



Amused II | 569 Fortunate, 589 Tickled, 949 Buoyant

Enthralled II | 974 Fulfilled

Custom Installation

*When creating a transition using Amused II and Enthralled II together, normal color variations between dye lots may be visible.



Amused II | 738 Merry, 968 Comical, 879 Chipper, 988 Excited

Enthralled II | 974 Fulfilled

Custom Installation

*When creating a transition using Amused II and Enthralled II together, normal color variations between dye lots may be visible.



Amused II | 939 Interested, 959 Refreshed,
Enthralled II | 139 Enchanted, 954 Dazzled, 802 Gratified
Custom Progression Installation



Resilient Tile: Global Entry
C0004 Sereno | 663 Lagoon

Global Entry

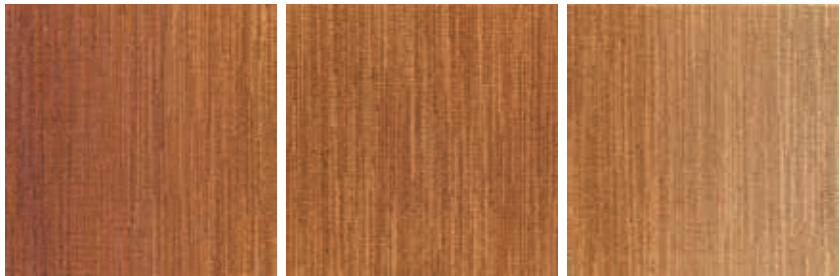
Global Entry is Mohawk Group's premier collection of heavy commercial resilient tile. Sereno features a beautiful concrete visual available in 18" x 36" rectangular format. The commercial grade wear layer and M-Force™ Enhanced Urethane Finish ensures product performance through the life of the installation.

Sereno is a tranquil approach to resilient tile, featuring a pattern that blurs the line between contemporary concrete and serene sandstone visuals. Colors are inspired by natural materials like clay and sand, evoking feelings of calm in any space. The directional pattern works with a variety of installation methods, including herringbone and right angle designs which compliment the large rectangular tile format.

- 18" x 36" size
- M-Force™ Enhanced Urethane for superior wear and scratch resistance
- 20 mil wear layer performs under commercial traffic
- No-polish maintenance reduces costs associated with long-term cleaning
- FloorScore® certified
- QuickShip available

How do I create a color progression?

Color Progression between Gradations



Amused II
Enticed 263

Enthralled II
Engaged 321

Amused II
Humored 652

Gradation between Color Progression

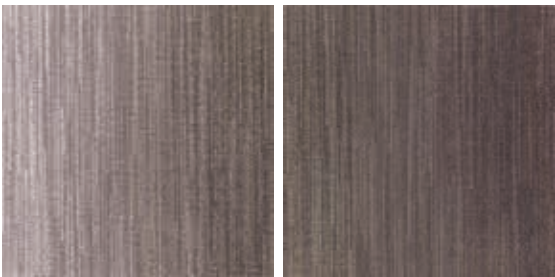


Enthralled II
Mesmerized 408

Amused II
Pleased 868

Enthralled II
Spellbind 478

Gradation to Gradation



Amused II
Refreshed 959

Amused II
Overjoyed 989



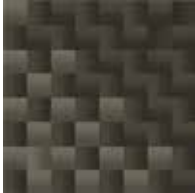

*When creating a transition using Amused II and Enthralled II together, normal color variations between dye lots may be visible.

DesignFLEX Visualizer

Available at mohawkgroup.com through the State of Mind product pages, as well as the “Design” tab in the main navigation, this interactive tool will maximize your ability to create and demonstrate the unique installations you can develop with the new State of Mind collection. For more information including an online video tutorial, please visit mohawkgroup.com/designflex.

Build It

Choose from up to four available methods to interact with the collection or start with one of our ready-made room scenes to explore the possibilities of this DesignFLEX collection.

			
<p>Standard</p> <p>Work with a single product in the following basic installations: Basketweave, Quarter Turn, Herringbone, Brick Ashlar, Vertical Ashlar, Monolithic, Plank Tile Alternating Ashlar, Plank Tile Brick Ashlar, Plank Tile Monolithic</p>	<p>Blending</p> <p>Create visual movement through the unique design possibilities of blending between colors or a spectrum across an entire space—from shuffle blends to variable ashlar blends and more.</p>	<p>Progressions</p> <p>Work with palettes of 3 or more products and colors to transition between each across an entire space linearly or diagonally.</p>	<p>Custom</p> <p>Work with as many products as you choose in a free-form environment. Choose from various inspirations, start from a standard installation method or go out on your own and create something completely unique. The sky is the limit.</p>

Preview It

Quickly switch from the 2-D Grid view to the 3-D room scene view to visualize in one of our spaces.

Export Your Design

Enter an email address and after a short processing period, receive an email with a download link to a zip file containing the following:

- Color-accurate digital SIM
- Drag and Fly™ render ready images of each product used in your grid to import into your own floor plan with AutoCAD, Sketch-Up, Revit, etc.
- PDF listing the product quantities used in your grid to help calculate quantities



duracolor[®]

FOREVER STAIN FREE

The performance standard for every application, Duracolor fiber is forever stain free, forever sustainable and forever beautiful, guaranteed*. Carpet is easy to maintain with inherent stain resistance and water-only stain removal.

FOREVER STAIN FREE

- Permanent built in protection
- Resists 99% of all stains
- Passes the GSA Test Method for stain resistance: AATCC Test Method 175
- Duracolor Warranty: We guarantee it

FOREVER SUSTAINABLE

- Made with 30% recycled content: 25% pre-consumer & 5% post-consumer
- No Chemicals required: 96% of all common stains clean with just water
- Declare Red List Free: Duracolor fiber is Declare red list free in accordance with the Living Building Challenge

- Lasts Longer: Product life is extended, reducing the impact to your bottom line and to the environment
- Recyclable through Mohawk's ReCover Program

FOREVER BEAUTIFUL

- Available in more than 300 colors
- Unsurpassed colorfastness to light and atmospheric contaminants so colors won't fade
- Unmatched design flexibility without compromising color retention or stain resistance
- Proven track record of success over the past 20 years



Duracolor

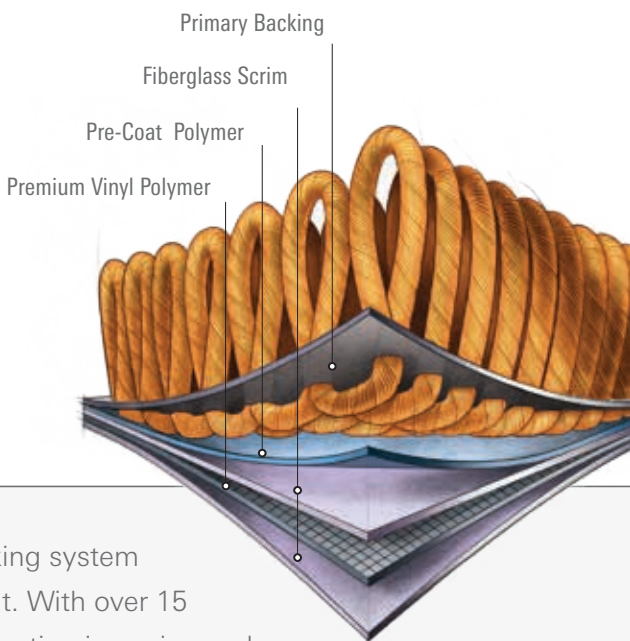


*Competitor
Solution Dyed /
Yarn Dyed Blend*

* See Mohawk Group official warranty documents for further details at www.mohawkgroup.com

EcoFlex™ ICT

Modular backing



EcoFlex™ ICT is a premium vinyl modular backing system containing a minimum of 35% recycled content. With over 15 years in the marketplace, its ultra dense construction is engineered to offer superior performance while giving greater cushioning properties.



PERFORMANCE

- Unsurpassed dimensional stability – no growing or shrinking
- Constructed with an ultra dense five layer cushion backing system
- Main body of tile provides an effective moisture barrier (not applicable at the seams)
- Tiles are impervious to moisture damage from spills and water extraction cleaning
- Construction features superior tuft bind that is highly resistant to edge ravel
- Proven performance for over 15 years



BUDGET

- Superior construction offers reliability for the life of your installation



SUSTAINABILITY

- EcoFlex ICT contains 35% minimum pre consumer recycled content by total weight*
- Recyclable through Mohawk's ReCover program
- EcoFlex ICT may contribute to or comply with LEED® credits MR 4.0, IEQ 4.3 and Innovation credit for NSF 140
- CRI Green Label Plus certified
- Free of EPA phthalates of concern



SERVICE

- Certified at the Gold Level in accordance with NSF/ANSI 140 the Sustainability Assessment for Carpet
- NSF/ ANSI 140 Platinum level version available with a minimum of 10% post-consumer recycled content
- Engineered performance for an overall better after sales service experience

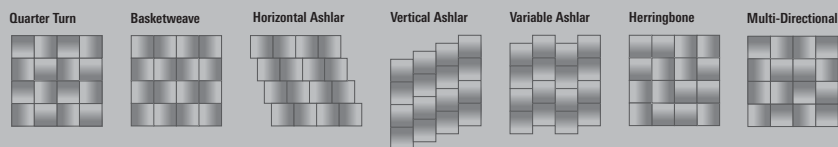
* Recycled content claim third party verified by UL (Underwriters Laboratory)

24BY24	<input type="checkbox"/>	Brand	Lees
		Style Name / Number	Amused II / GT313
		Construction	Tufted
		Surface Appearance.....	Textured Patterned Loop
		Gauge	1/12" (47.00 rows per 10 cm)
		Tufted Weight.....	24 oz/yd ² (814 g/m ²)
		Dye Method.....	Yarn Dyed
		Fiber Type	duracolor. Premium Nylon
		Stain Release Technology	Permanent, Built into the Fiber
		Soil Release Technology.....	Sentry Soil Protection
		GSA Stain Release Rating	Passes
		Backing Material	EcoFlex ICT
		Indoor Air Quality	Green Label Plus Certified # 1098
		NSF 140	Gold
		Size	24" x 24" (.6096 m x .6096 m)
		Installation Method.....	Herringbone / Quarter Turn / Basketweave
			Multi Directional / Horizontal Ashlar /
			Variable Ashlar / Vertical Ashlar
		Flammability	ASTM E 648 Class 1 (Glue Down)
		Smoke Density.....	ASTM E 662 Less than 450
		Static Propensity	AATCC - 134 Under 3.5 KV
		Warranties: Lifetime Limited Carpet Tile Warranty, Lifetime Limited Duracolor Stain Warranty, Lifetime Static	

24BY24	<input type="checkbox"/>	Brand	Lees
		Style Name / Number	Enthralled II / GT314
		Construction	Tufted
		Surface Appearance.....	Textured Patterned Loop
		Gauge	1/12" (47.00 rows per 10 cm)
		Tufted Weight.....	24 oz/yd ² (814 g/m ²)
		Dye Method.....	Yarn Dyed
		Fiber Type	duracolor. Premium Nylon
		Stain Release Technology	Permanent, Built into the Fiber
		Soil Release Technology.....	Sentry Soil Protection
		GSA Stain Release Rating	Passes
		Backing Material	EcoFlex ICT
		Indoor Air Quality	Green Label Plus Certified # 1098
		NSF 140	Gold
		Size	24" x 24" (.6096 m x .6096 m)
		Installation Method.....	Quarter Turn / Multi Directional /
			Horizontal Ashlar / Vertical Ashlar
		Flammability	ASTM E 648 Class 1 (Glue Down)
		Smoke Density.....	ASTM E 662 Less than 450
		Static Propensity	AATCC - 134 Under 3.5 KV
		Warranties: Lifetime Limited Carpet Tile Warranty, Lifetime Limited Duracolor Stain Warranty, Lifetime Static	

* When creating a transition using Amused II and Enthralled II together, normal color variations between dye lots may be visible.

Installation Instructions:



 **Mohawk Group**

Mohawk Industries, Inc. warrants its adhesives for the life of the original installation only when a Mohawk Industries style (product) is installed. Mohawk's floor preparation procedures must be followed to ensure that the substrate has been prepared properly. Failure to use Mohawk Industries adhesives or to follow Mohawk's floor preparation procedures will void all lifetime adhesive warranties. Please contact your local Sales Representative for installation guidelines.

These patterns contain inherent characteristics which may result in pattern run off and/or pattern appearance variations at the seams or tile edges (darker or lighter pattern lines). These characteristics are inherent in the patterns and are not manufacturing defects. Consideration to these characteristics should be given when selecting an installation method.

Chair pads are recommended under office chairs with roller casters to preserve appearance retention, act as a deterrent toward delamination and to prevent premature or accelerated wear. Walk-off tiles from the Tuff Stuff II Collection are recommended at entryways to reduce soiling.

Duracolor by Mohawk Stain Resistant System passes GSA requirements for permanent stain resistance. Under GSA requirements stain resistant carpets must score no less than 8.0 (10.0 is best) on the AATCC Red 40 Stain Scale. Carpet samples must first be exposed to 100 revolutions of the Taber abrader (1,000-gram weight per H-18 wheel) and then the abraded area must be stain tested using AATCC tested using AATCC test method 175.

Mohawk Group is providing this architect folder for the purpose of promoting our commercial business. This folder and its samples shall remain the property of Mohawk Group. Color may vary from dye lot to dye lot. Substitution of material may be made due to improved technology, supply limitations or other factors. The performance of this product is not affected by such variations.

For current and complete specifications please visit www.mohawkgroup.com

recover
carpet recycling program
877-3RE-CYCL



duracolor.

 Produced with recycled materials