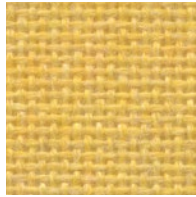


FR701® 2100

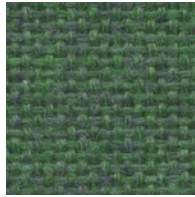
PANEL | ACOUSTIC



Yellow
744



Chartreuse
734



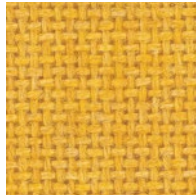
Fir
743



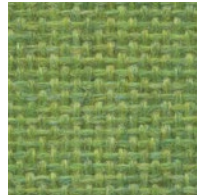
Leaf
755



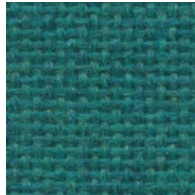
Dune
749



Sunshine
797



Lime
721



Teal
742



Green Neutral
402



Stream
757



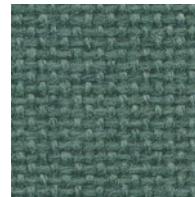
Orange
746



Sky
740



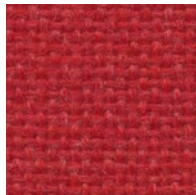
Sapphire
745



Blue Spruce
467



Verte Papier
561



Cardinal
738



Cobalt
420



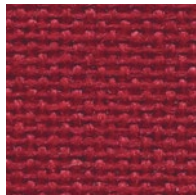
Baltic
153



Wedgewood
150



Bayberry
486



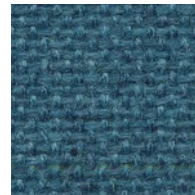
Red
799



Iris
798



Blue Plum
553



Ultramarine
470



Aquamarine
381



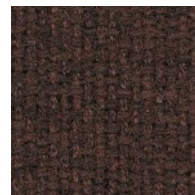
Claret Accent
418



Deep Burgundy
556



Black
408



Chocolate
793



Medium Grey
298



Guilford of Maine®



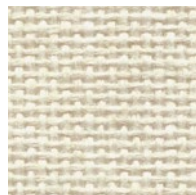
Wheat
130



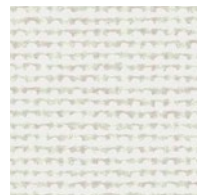
Bone
748



Buff
460



Eggshell
144



White
224



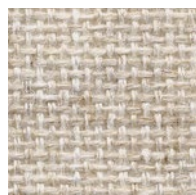
Eucalyptus
468



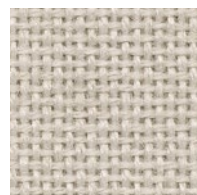
Desert Sand
758



Apricot Neutral
404



Quartz
380



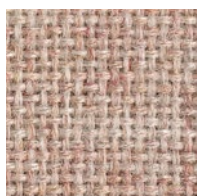
Pearl
481



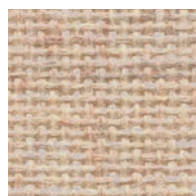
Blue Papier
539



Coin
794



Cherry Neutral
400



Vanilla Neutral
403



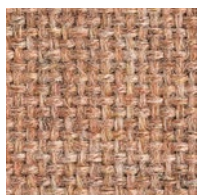
Opal
394



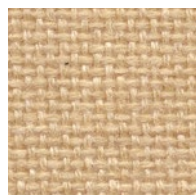
Crystal Blue
175



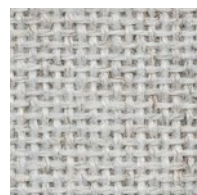
Blue Neutral
401



Cinnabar
422



Straw
747



Silver Papier
538



Steel Grey
471



Grey Mix
238



Pumice
423



Light Moss
754



Cement Mix
750



Flannel
795



Amethyst
424



Moleskin
796



Earth
792



Silver Neutral
406

FR701® 2100

Specifications

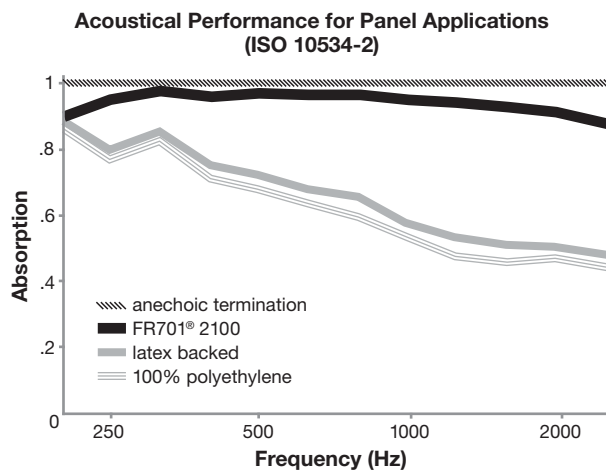
Content	100% post-consumer recycled polyester
Weight	16.0 ± 0.5 oz./lin. yd.
Width	66" min. useable
Repeat	none

Cleaning Code

Standard Care Label W-S. Clean with water based cleaning agents, foam or pure, water free solvents. Vacuuming or light brushing is recommended to prevent dust and soil buildup.

Acoustical Performance

The plot below summarizes impedance tube measurements of absorption of an anechoic termination and various fabrics in front of the anechoic termination.



NRC of anechoic termination	1.00
NRC of fabric in front of anechoic termination	0.95

Performance



Colorfastness to Light (AATCC 16.3 Option 3)
Grade 4 min. at 40 hours



Colorfastness to Crocking (AATCC 8)
Grade 4 min. dry & Grade 3 min. wet



Breaking Strength (ASTM D5034)
150 lbf min. warp and fill



Flammability (ASTM E84)
Class I or A

Sustainability



100% recycled and recyclable
Terratex is a registered trademark of Duvaltex



facts™
Silver

Miscellaneous

Proudly woven in North America supporting our local communities.

Application testing of this product is recommended. Colors may vary between dye lots. This is a non-directional fabric.

Visit guilfordofmaine.com for samples.



This pattern is included in the underwriters laboratory panel fabric recognition program. Additional testing of this U.L. recognized component fabric is not required on approved panels from participating manufacturers.

*Certification Marks owned by the Association for Contract Textiles, Inc.



Guilford of Maine®

USA & INTERNATIONAL
800 544 0200 PHONE
616 554 2255 FAX

CANADA
418 227 9897 PHONE
418 227 9899 FAX

19/05
FC-2100

Anchorage 2335 (66") Open House 2334 (54")



White*
2664



Birch
2129



Vanilla
2130



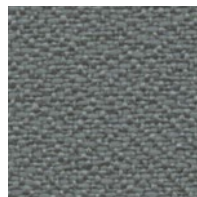
Angora
2035



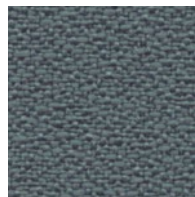
Goose
2049



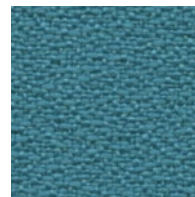
Slate
2017



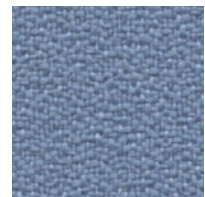
Wolf
2027



Quarry Blue
2026



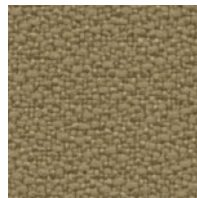
Waterfall
2691



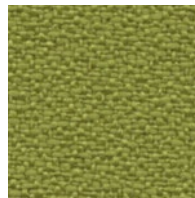
Pool
2842



Eucalyptus
2047



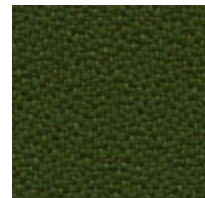
Cumin
2050



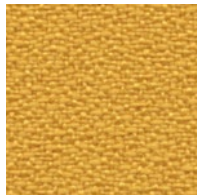
Green Apple
2087



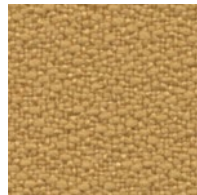
Willow
2028



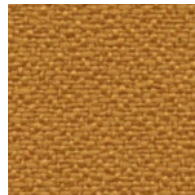
Fern
2840



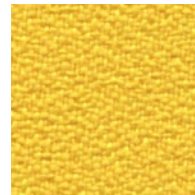
Sunshine
2082



Straw
2034



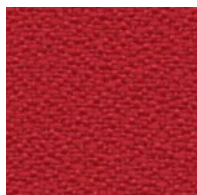
Goldenrod
2090



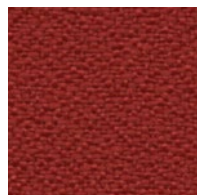
Lemon
2839



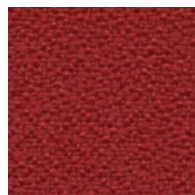
Pumpkin
2021



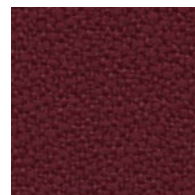
Geranium
2084



Poppy
2091



Red Delicious
2014



Mulberry
2044



Aubergine
2036

*Not recommended for use as Upholstery.

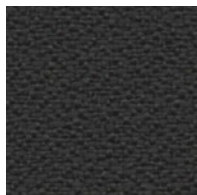




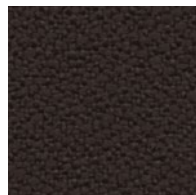
Asteroid
2053



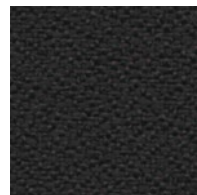
Fossil
2093



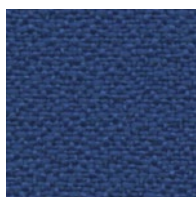
Graphite
2079



Coffee Bean
2083



Onyx
2016



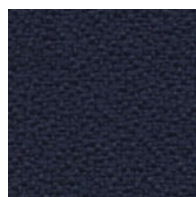
Lapis
2094



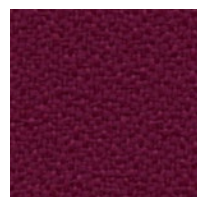
Thistle
2085



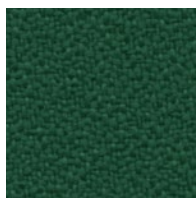
Cobalt
2045



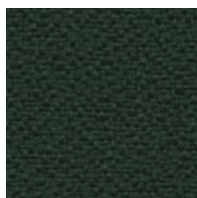
Midnight
2025



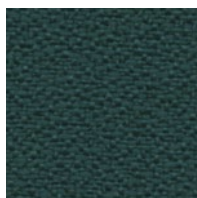
Orchid
2843



Turquoise
2841



Pine Needle
2022



Deep Water
2051

Anchorage 2335 (66") Open House 2334 (54")

MULTI-PURPOSE | UPHOLSTERY
PANEL | ACOUSTIC

Specifications

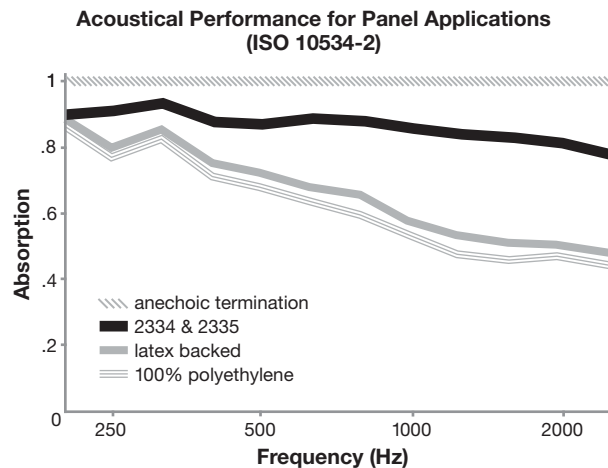
Content	35% post-consumer recycled polyester 65% pre-consumer recycled polyester
Weight	2334 - 13.1 ± 1.0 oz./lin. yd. 2335 - 15.0 ± 1.0 oz./lin. yd.
Width	2334 - 54" min. useable 2335 - 66" min. useable
Repeat	none
Backing	none
Treatment	none

Cleaning Code

Standard Care Label W-S. Clean with water based cleaning agents, foam or pure, water free solvents. Vacuuming or light brushing is recommended to prevent dust and soil buildup.

Acoustical Performance

The plot below summarizes impedance tube measurements of absorption of an anechoic termination and various fabrics in front of the anechoic termination.



NRC of anechoic termination	1.00
NRC of fabric in front of anechoic termination	.85

Performance

Colorfastness to Light (AATCC 16.3 Option 3)
Grade 4 min. at 40 hours

Colorfastness to Crocking (AATCC 8)
Grade 4 min. dry & Grade 3 min. wet

Breaking Strength (ASTM D5034)
275 lbf min. warp and fill

Seam Slippage (ASTM D4034)
50 lbf min. warp and fill

Pilling Resistance (ASTM D3511)
Class 4 min.

Flammability
**CA Technical Bulletin 117-2013 Section 1
NFPA 260/UFAC Fabric Classification - Class I
ASTM E84 Class I or A**

* Abrasion (ASTM D4157)
250,000 double rubs min. cotton duck

Sustainability

100% recycled and recyclable
Terratex is a registered trademark of Duvaltex

Miscellaneous

Proudly woven in North America supporting our local communities.

Please specify when ordering whether 54" or 66" width is needed. Dye lots may vary. Differences may also occur between corresponding colors of Anchorage 2335 and Open House 2334.

Application testing of this product is recommended. This is a directional fabric.

Visit guilfordofmaine.com for samples.

This pattern is included in the underwriters laboratory panel fabric recognition program. Additional testing of this U.L. recognized component fabric is not required on approved panels from participating manufacturers.

*Multiple factors affect fabric durability and appearance retention, including end-user application and proper maintenance. Wyzenbeek results above 100,000 double rubs have not been shown to be an indicator of increased lifespan.

Certification Marks owned by the Association for Contract Textiles, Inc.