

concrete & rust HPL sheets



## concrete & rust HPL sheets



VISION CONCRETE  
D.MBT.100



VINTAGE CONCRETE  
D.MBT.101



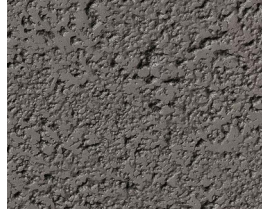
ANTHRACITE CONCRETE  
D.MBT.102



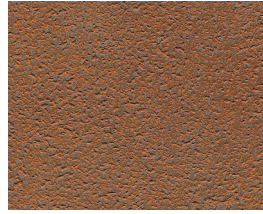
ANTHRACITE VINTAGE  
D.MBT.110



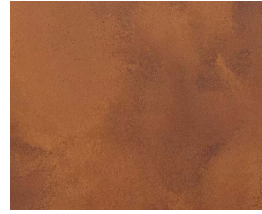
BETON RUSTIC CONCRETE  
D.MBT.103



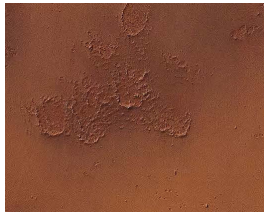
GRIGIO ASPHALT  
D.MBT.500



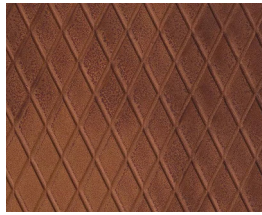
OXIDE ASPHALT  
D.MBT.501



FINO RUST  
D.MBT.200



RUVIDO RUST  
D.MBT.201



ROMBI RUST  
D.MBT.202

### APPLICATIONS

wall  
millwork

### ENVIRONMENT

interior

### DIMENSIONS\*

48" x 120"

### FEATURES

- able to curve
- edge finishing available
- lightweight mineral mixture

### FINISH & TEXTURE

concrete  
rust

### FABRICATION

sheet  
panel

## ARIA FLEX WALL/FLOOR/CEILING



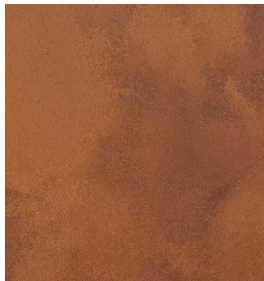
FLEX VISION CONCRETE  
D.MBT.100.M



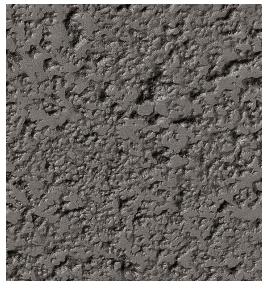
FLEX VINTAGE CONCRETE  
D.MBT.101.M



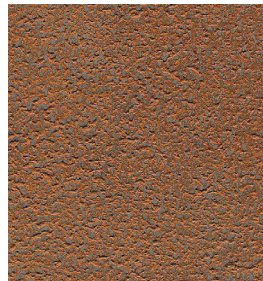
FLEX ANTHRACITE VINTAGE  
D.MBT.110.M



FLEX FINO RUST  
D.MBT.200.M



FLEX GRIGIO ASPHALT  
D.MBT.500.M



FLEX OXIDE ASPHALT  
D.MBT.501.M

ARIA FLEX IMPRESSES WITH ITS ORIGINAL CONCRETE LOOK AND FEEL, IS HARD-WEARING (COMPARABLE WITH LVT WOOD FLOORING) AND DURABLE, YET STILL FLEXIBLE.

### ADVANTAGES:

- APPLICABLE FOR FLOOR, WALL AND CEILING
- PROCESSING AND ASSEMBLY: SIMPLE, CLEAN, FAST
- BONDING WITH ONE COMPONENT GLUE
- CUTTING WITH A UTILITY KNIFE
- FLOOR SEALING POSSIBLE
- ORGANIC CONCRETE MADE OF MOSTLY RENEWABLE MATERIALS.
- AVAILABLE AS 39" x 102"

