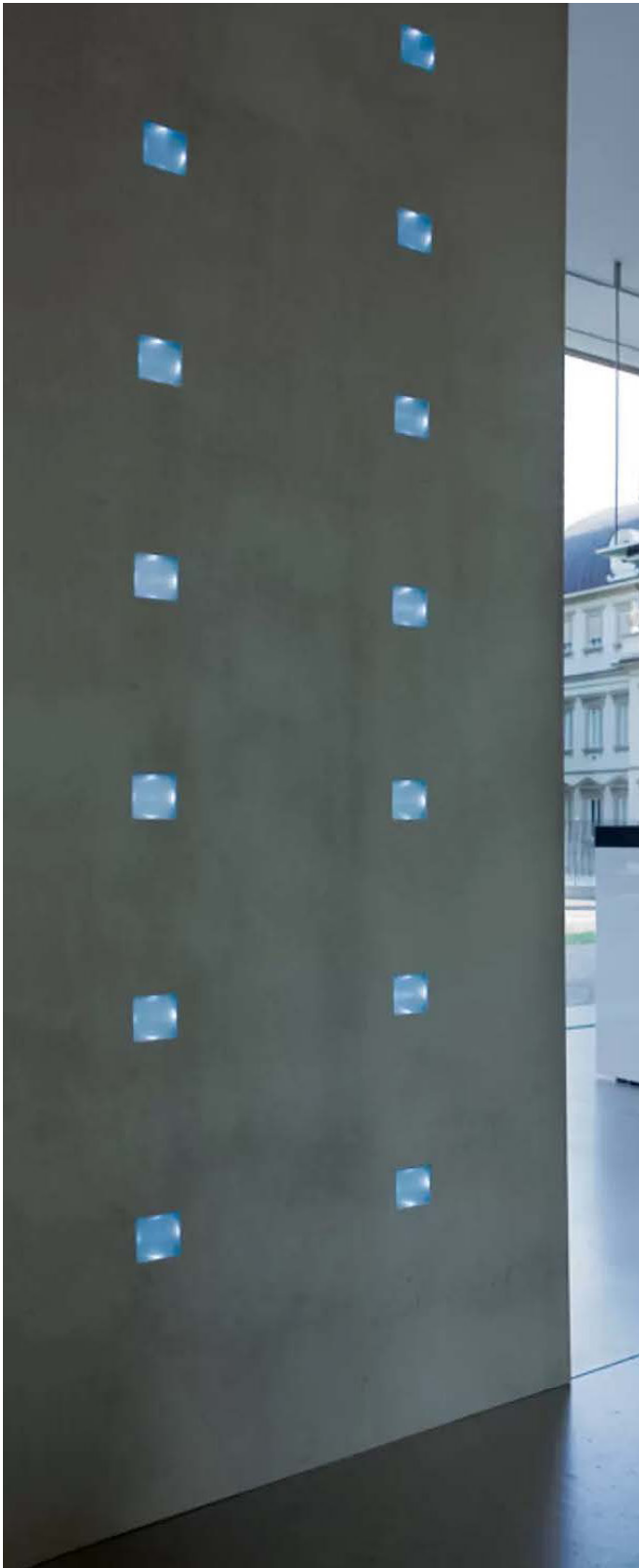


# ARIA



collection & technical data



- 2 INDEX
- 3 Collection
- 4 Concrete & Rust HPL Sheets Applications
- 5 Asphalt & **FLEX** Wall/Floor/Ceiling Applications
- 6 ARIA Technical Data
- 7 ARIA **FLEX** Wall/Floor/Ceiling Technical Datasheet
- 9 ARIA **FLEX** Wall/Floor/Ceiling Installation Instructions
- 11 Cleaning & Care Instructions
- 12 ARIA (HPL) Processing Information
- 13 Edge Paste Installation

# COLLECTION

## ARIA (HPL)

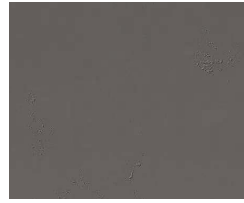
### Concrete



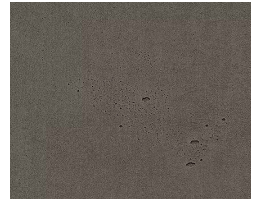
VISION CONCRETE  
D.MBT.100



VINTAGE CONCRETE  
D.MBT.101



ANTHRACITE CONCRETE  
D.MBT.102



ANTHRACITE VINTAGE  
D.MBT.110



RUSTIC CONCRETE  
D.MBT.103

### Rust



FINO RUST  
D.MBT.200

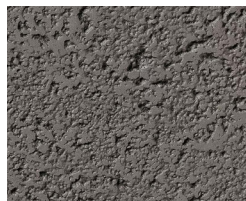


RUVIDO RUST  
D.MBT.201

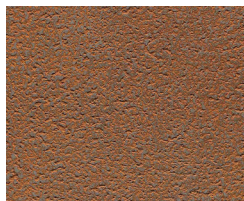


ROMBI RUST  
D.MBT.202

### Asphalt



GRIGIO ASPHALT  
D.MBT.500



OXIDE ASPHALT  
D.MBT.501

### FLEX WALL/FLOOR/CEILING



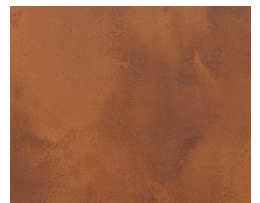
FLEX VISION CONCRETE  
D.MBT.100.M



FLEX VINTAGE CONCRETE  
D.MBT.101.M



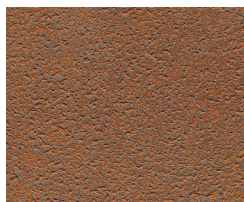
FLEX ANTHRACITE VINTAGE  
D.MBT.110.M



FLEX FINO RUST  
D.MBT.200.M



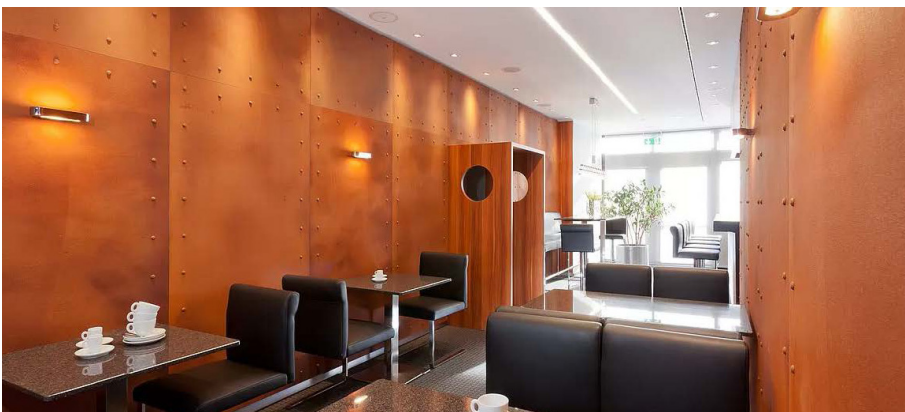
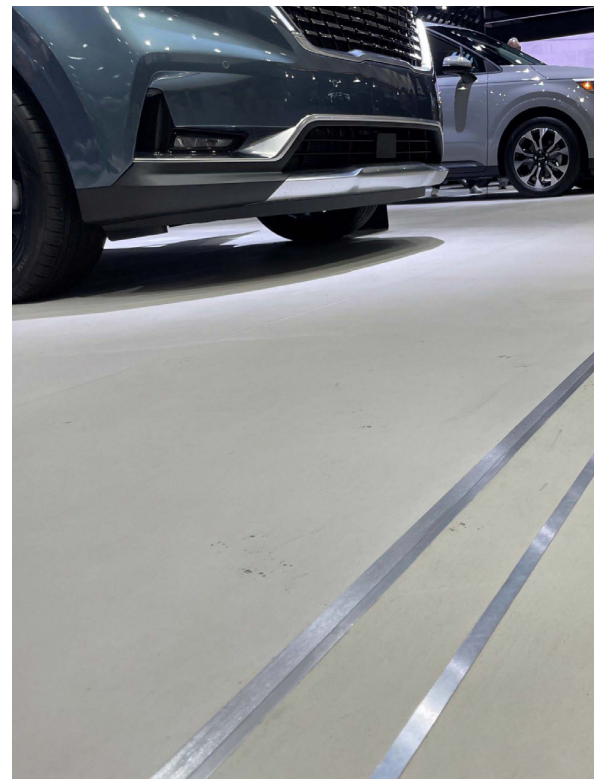
FLEX GRIGIO ASPHALT  
D.MBT.500.M



FLEX OXIDE ASPHALT  
D.MBT.501.M

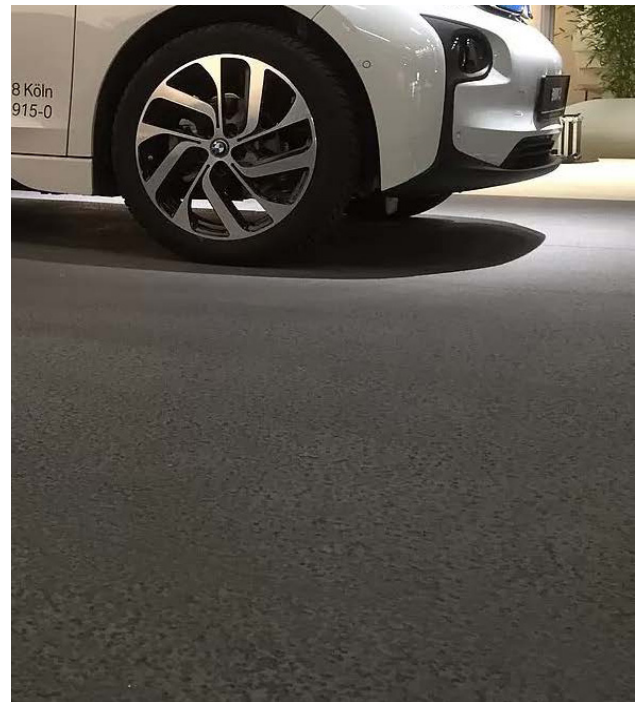
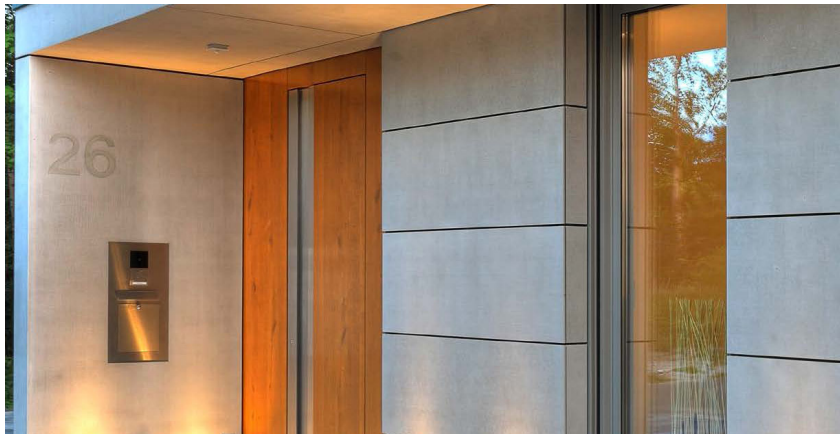
# CONCRETE & RUST HPL SHEETS APPLICATIONS

## ARIA



# ASPHALT & **FLEX** WALL/FLOOR/CEILING APPLICATIONS

## ARIA



# TECHNICAL DATA

## ARIA: Concrete & Rust HPL Sheets

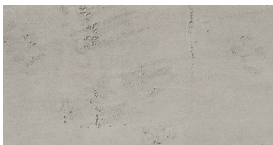
### PRODUCT DESCRIPTION

- The carrier board is a 0.9 mm HPL-board. The rear is HPL - raw.
- The top is coated with a flexible, mineral coating at a thickness of 1 - 7 mm. This is plastic-bound and can easily be processed with conventional carbide-equipped carpentry tools.
- Aria is classified according to DIN 13501-I as flame retardant B-s1, d0.
- The surfaces are painted with a matte varnish.
- For a higher strain, e.g. on horizontal areas, we recommend an additional matte protective coat of varnish.
- For highly stressed areas, such as worktops, counter and table areas, the work surface varnish is recommended.
- The surfaces can be painted and are available in nearly any color.

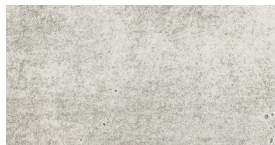
### USAGE OPTIONS:

E.g. furniture, inner doors, furniture fronts, shop and trade fair constructions, interior design, e.g. wall panels, shape bonds, etc.

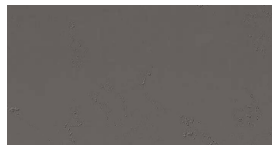
### DESIGNS:



VISION CONCRETE  
D.MBT.100



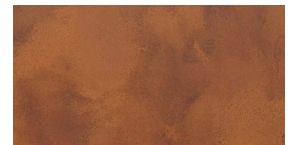
VINTAGE CONCRETE  
D.MBT.101



ANTHRACITE CONCRETE  
D.MBT.102



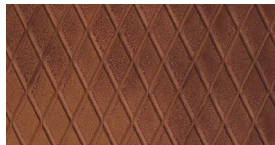
RUSTIC CONCRETE  
D.MBT.103



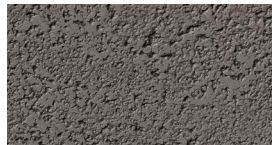
FINO RUST  
D.MBT.200



RUVIDO RUST  
D.MBT.201



ROMBI RUST  
D.MBT.200



GRIGIO ASPHALT  
D.MBT.500



OXIDE ASPHALT  
D.MBT.501

### TECHNICAL DATA:

Dimensions: 4ft x 10ft	Aria Concrete	Aria Rust	Aria Rust	Aria Asphalt
Surface	vision, vintage, anthracite, & rustic	fino & ruvido	rombi	grigio & rust
Coating thickness	approx. 1-2 mm	approx. 1-3 mm	approx. 1-3 mm	approx. 1-4 mm
Suitable for inner radii as of	approx. 2 in	approx. 2 in	approx. 4 in	approx. 6 in
Suitable for outer radii as of	approx. 6 in	approx. 6 in	approx. 6 in	approx. 10 in
Weight	approx. 6 <sup>1/2</sup> lbs.	approx. 6 <sup>1/2</sup> lbs.	approx. 6 <sup>1/2</sup> lbs.	approx. 7 lbs.

### PROCESSING:

Sawing/drilling/milling	With regular carbide-equipped tools. Diamond-equipped tools are not necessary. Screw extraction resistance as in MDF, pre-drilling is recommended. The Aria surface must be treated like a normally veneered, painted surface. Cleaning is possible with a mist-moistened rag.
Screws	
Cleaning/care	
Bond	<ul style="list-style-type: none"> <li>· Commercial wood glues</li> <li>· Cold pressing</li> <li>· Pressure 200 kg/m</li> <li>· For the time of pressing, observe the processing notes of the glue manufacturer or the glue.</li> <li>· Additions depending on foam film structure / corrugated cardboard or insulating boards.</li> </ul>
Counter-pull	We recommend a 0.8 - 1 mm thick HPL as counter-pull. Unilateral mineral coating means that slight distortions cannot be excluded.
Packaging	Lying on pallet.
Storage	Store dry, interim layers with foam foil or corrugated cardboard. Protect from frost.
Recycling	Product is ecologically harmless, can be recycled and disposed of in the household waste.

Information is provided according to our best knowledge. The contents are, however, not legally binding. The user is not released from verifying that the materials are suitable for the intended purpose. Technical changes reserved. Samples of these minerals show only the general looks and can never combine the properties of color, texture, structure and joints. Differences of any kind, as well as air inclusions, are natural and not any reason for complaint. Small distortions cannot be fully excluded.

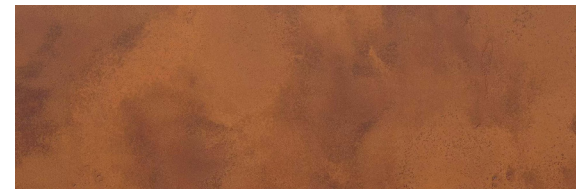
# ARIA FLEX WALL/FLOOR/CEILING



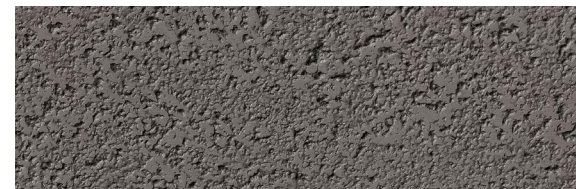
FLEX VINTAGE CONCRETE | D.MBT.101.M



FLEX VINTAGE ANTHRACITE CONCRETE | D.MBT.110.M



FLEX FINO RUST | D.MBT.200.M



FLEX GRIGIO ASPHALT | D.MBT.500.M

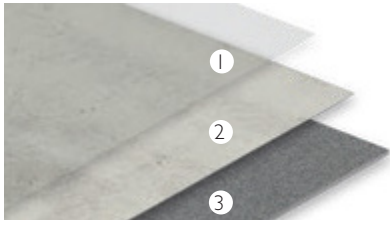


FLEX OXIDE ASPHALT | D.MBT.501.M

PRODUCT DESCRIPTION	ITEM NO.	THICKNESS (MM)	WEIGHT PER SQ FT	DIMENSIONS (IN.)	WALL & CEILING	FLOORING
Flex Vintage Concrete	D.MBT.101.M	3	approx. 1.1 lbs.	39 x 102	•	•
Flex Anthracite Vintage Concrete	D.MBT.110.M	3	approx. 1.1 lbs.	39 x 102	•	•
Flex Fino Rust	D.MBT.200.M	3	approx. 1.1 lbs.	39 x 102	•	
Flex Oxide Asphalt	D.MBT.501.M	4	approx. 1.2 lbs.	39 x 102	•	•
Flex Grigio Asphalt	D.MBT.500.M	4	approx. 1.2 lbs.	39 x 102	•	•

# ARIA FLEX WALL/FLOOR/CEILING

## TECHNICAL DATASHEET



### STRUCTURE

1. Protective Varnish
2. Mineral Concrete in unique finishes
3. Ecological PU sunstructure



## PRODUCT DESCRIPTION

Aria Flex is a bio-mat made of polyurethane with a design surface in authentic finishes such as concrete, rust and asphalt. Aria Flex is mainly made from vegetable oils such as rapeseed or castor oil and naturally occurring mineral components such as chalk. The Aria Flex consists mainly of renewable raw materials and natural fillers - without PVC, plasticizers, solvents and is therefore low in harmful substances.

## USAGE OPTIONS

The Aria Flex can be used for wall cladding, floors and ceilings. Because it is flexible, the product is also suitable for interior finishing, furniture fronts, shop and exhibition construction and much more. When used as a floor, additional sealing is necessary.

## PROCESSING

Cutting	With utility knives or normal woodworking machines.
Sawing/ Drilling/ Milling	With normal carbide tipped tools.
Bonding	See installation instructions.
Cleaning/Care Clean	With a damp cloth. In case of heavy soiling, a neutral cleaner can be added to the water. For more detailed instructions, see care instructions.
Storage	Dry storage. Protect from frost.
Recycling/ Disposal	Standard, Nonharmful
Repair	Damage to the surface can be repaired by simply re-sealing the affected areas.
Skirting Board	Commercially available skirting boards or adhesive strips.
Rounding	Suitable for inner radii from approx. 4 in and outer radii from approx. 6 in.
Acclimatisation	The product must be acclimatised before installation/processing. See acclimatisation information in or on the packaging or installation instructions. In case of rolled goods, the roll must acclimatise in the packaging.
Floor Heating	Suitable for all conventional hot water underfloor heating systems and regulated electrical systems up to a surface temperature of 80° F.
Floor Installation	In order to maintain the high quality in the floor area, additional sealing is necessary in any case. For this purpose we recommend a 2- component water-based lacquer. Please follow the processing guidelines of the respective manufacturer.

## CLASSIFICATIONS

	<b>Utilization class 23</b> EN ISO 10874	Heavy-duty use in the domestic area
	<b>Utilization class 31</b> EN ISO 10874 *Higher utilization class possible	Medium use in the commercial sector
	slip resistance: DIN 51130	R9* ( Higher slip resistance can be achieved depending on varnish used for sealing )
	<b>fire class: EN13501-1:2007</b>	<b>C-s1, d0 (comparable with B1 of DIN4102-2)</b>
	light fastness: EN ISO 105-B02 Test specimen contrast: EN 20105-A02	<b>blue scale: ≥ 6</b> <b>grey scale: ≥ 4</b>
	thermal insulation resistance ISO 8302	~ 0,01 (m²K)/W
	impact sound reduction EN ISO 10140	~ 4 dB
	dimensional stability EN ISO 23999	~ 0,10 %

## NOTE

Information is provided according to our **best knowledge**. The contents, however, is not legally binding. The user is not released from verifying that the materials are suitable for the intended purpose. Technical changes reserved. The main component of the mineral concrete is organic so that colour shadings between different lots can not be excluded completely. Samples of these materials only show the general appearance and cannot unite the characteristics like **colour, texture and structure**. Differences of any kind, as well as air inclusions, are natural and no reason for claim. Low distortion as well as little displacements in the joint area and minor gap formation cannot be fully excluded.



[www.blauer-engel.de/uz120](http://www.blauer-engel.de/uz120)

# ARIA FLEX WALL/FLOOR/CEILING

## INSTALLATION INSTRUCTIONS

### IMPORTANT GENERAL INFORMATION

Before processing, make sure that the delivered product is in perfect condition, cut or installed goods can no longer be claimed. For the installation of Aria Flex, the relevant national standards and guidelines, technical references as well as the recognised rules of the trade apply.

### ACCLIMATIZATION

Aria Flex should be acclimatised at least 24 hours before installation in the rooms to be laid, under the following conditions:

Climatic conditions in the room:

- air temperature in the room > 60°F (but not more than 80°F) • soil temperature > 59°F (not more than 71°C)
- relative humidity < 65%.

It must be ensured that the room climate conditions remain constant during the acclimatisation and the setting phase of the adhesive. The above mentioned indoor climate must be maintained for at least 72 hours before, during and after the bonding the flooring.



[www.blauer-engel.de/uz120](http://www.blauer-engel.de/uz120)

### REQUIREMENTS ON THE SUBSTRATE

- Sufficient strength, load-bearing capacity, dimensional stability and permanent dryness, free from adhesion-reducing layers such as dust, dirt, oil, grease and loose parts.
- Old floor coverings must be firm, thoroughly cleaned, sanded down and, if necessary, provided with a softener barrier. Perfectly firm, flat adhesive surfaces with functionally adapted absorbency are achieved by means of fillers, layer thickness with Vapour-tight coverings, as well as on non-absorbent substrates of at least 2 mm.
- The wall surface on which the material is to be adhered to must be sealed in order prevent moisture and to create a strong bond of the adhesive. To test, place a bead of water on the surface. If the bead remains intact, the surface is non absorbent.

### INSTALLATION

The entire area of Aria Flex must be covered with adhesive. We recommend the use of low-emission and solvent-free dispersion adhesives for absorbent substrates, wet-bed adhesives are preferable. The application quantity varies depending on the type of adhesive and formulation and as specified by the adhesive manufacturer or the notched trowel specified. The guidelines of the adhesive manufacturers must be observed.

Note: In order to achieve an ideal installation and end result, good adhesive wetting of the back of the covering must be ensured. However, to avoid adhesive crushing, no more adhesive than necessary should be used. An adhesive test can be useful. The following wet adhesives are approved by the respective manufacturers for laying the Aria Flex.

WALL	FLOOR
• Ovalit S and Ovalit P – Metylan	• Durocoll – Schönox
• High-Tack – WULFF (Blue Angel)	• Supra-Strong – WULFF (Blue Angel)
• Emiclassic and Durocol – Schönox	• Multi-Strong – WULFF (Blue Angel)
• KE 2000 S – Uzin Utz AG (Blue Angel)	• KE 2000 S – Uzin Utz AG (Blue Angel)
• D 3318 MultiFlex – WAKOL (Blue Angel)	• D 3318 MultiFlex – WAKOL (Blue Angel)
• D 3360 VersaTack –WAKOL	• D 3360 VersaTack –WAKOL
• MS 550 PVC- and rubber adhesive – WAKOL	• MS 550 PVC- and rubber adhesive – WAKOL
• Bostik's Best – Bostik	• Bostik's Best – Bostik
• Ardaflex Multi – Bostik	• Elastostik Xtrem – Bostik
	• Ardaflex Multi – Bostik

# ARIA FLEX WALL/FLOOR/CEILING

## INSTALLATION INSTRUCTIONS

### ABSOLUTELY OBSERVE

Aria Flex must be placed in the adhesive bed after the appropriate airing time, joint tight and stress-free, and then pressed over its entire surface with a suitable rubbing device. A manual pressure roller or a rubbing board is recommended. After bonding, we recommend that the floor covering be evenly rolled with a heavy link roller (min. 110 lb) within the installation time specified by the manufacturer.

In order to maintain the high quality in the floor area, additional sealing is necessary in any case. For this purpose we recommend a 2-component water-based lacquer. Please follow the processing guidelines of the respective manufacturer.

Use / loading of the laid surface should only take place after the adhesive has completely set (observe the instructions of the adhesive manufacturer). Keep the laid surface protected from traffic until set.

Please note for sharp edged sheets: Before laying, we recommend that the edges on the decor side are deburred.

These references do not claim to be complete. Due to the processing and application conditions beyond our control and the large number of different materials with regard to substrate and adhesive, we recommend that you observe the technical data sheets of the respective adhesive manufacturer and carry out your own adhesive tests. A liability for concrete application results can therefore not be derived from the information and references in this leaflet.

### COATING RECOMMANDATIONS

Product description:

Measure:	Finishing coating with Aqua 2DS-450/10 at the construction site Component: Concrete Flooring
Polish:	Sand the surface using a sanding pad (green) and then remove dust. The substrate must be load-bearing and dry as well as free of grease, wax, dirt, and dust.
Product Type:	Aqua 2DS-450/10 + 10% Aqua H-480 + 4% structuring agent SM- 820/M + 10% water. Application Rollers with velour roller 3-4 mm.
Consumation:	80-100 g/m <sup>2</sup>
Drying:	Min. 8 hours at 68 °F.

Please note that this performance/execution description does not claim to be complete. This matter requires a detailed examination of the actual object. As a result, no liability can be assumed. If new, previously unknown circumstances arise during the execution of the work, these must be taken into account.

The compatibility, adhesion, and shade with the substrate must be checked by setting up test areas. Please see the technical leaflets, also available online at [www.remmers.com](http://www.remmers.com) for download, for information on the processing of our products.

## CLEANING & CARE INSTRUCTIONS



### CLEANING

Clean Aria Flex on a daily or as needed basis. Loose dirt can be removed by sweeping, vacuuming, wiping or mopping. In case of heavy soiling with adhering impurities, a neutral cleaner can be added to water.

### STAIN REMOVAL

All stain-forming and aggressive substances must be removed from Aria Flex. When treating stains with cleaning agents or stain removers, a material compatibility test must first be carried out in an unobtrusive area or on an unadhered covering sample. The instructions and regulations of the detergent manufacturers must be observed.

### GENERAL INFORMATION

Chair, table and furniture feet must be protected with suitable protective glides or underlays.

As a preventive measure, bright, migration-free furniture glides should be used. Only use suitable chair and furniture castors. Chair castors and chair and furniture glides must be serviced regularly. The bearing surfaces of chair and furniture glides must be flat and rounded at the edges. Metal glides can corrode in connection with moisture and cause stains. Flower pots/pots made of terracotta or clay can cause discolouration on elastic floor coverings. Please use suitable coasters. High point loads with small contact area, this also applies e.g. to stiletto heels or high heels, can lead to irreversible impressions or damage to elastic floor coverings. If necessary, use suitable and suitably dimensioned supports for load distribution. The slip resistance and slip resistance of floor coverings is significantly influenced by the dirt ingress, the cleaning frequency and the cleaning/care products used. Please use only compatible cleaning/care products from one manufacturer. Scouring powders, sanitary cleaners, acids or strong solvents can damage the surface of the flooring or furnishings. Coloured wound and skin disinfectants as well as hair dyes or bleaching agents containing peroxide, for example, can cause irreversible damage. If there is uncertainty in the use of chemical, colouring substances or foodstuffs, a resistance test should first be carried out on an inconspicuous area of the covering or sample.

### DISPOSAL

Standard disposal, nonharmful.

This information has been compiled with great care and to the best of our knowledge and belief. The data are based on practical experience, test results, the results of own tests and the state of the art. We accept no liability for printing errors, standard errors and other errors.

Information is provided according to our best knowledge. The contents, however, is not legally binding. The user is not released from verifying that the materials are suitable for the intended purpose. Technical changes reserved. The main component of the mineral Aria coating is organic so that colour shadings between different lots can not be excluded completely. Samples of these materials only show the general appearance and cannot unite the characteristics like colour, texture and structure. Differences of any kind, as well as air inclusions, are natural and no reason for claim. Low distortion as well as little displacements in the joint area and minor gap formation cannot be fully excluded.

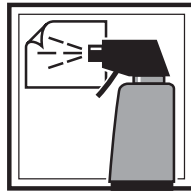
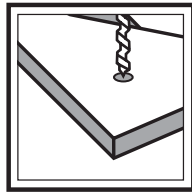
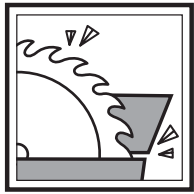
# ARIA (HPL) PROCESSING INFORMATION

## STANDARD BACKER



PHENOLIC BACK (HPL)

## PROCESSING



### SAWING | DRILLING | MILLING

With regular carbide-equipped tools. Diamond- equipped tools are not necessary.  
You can process standard backed material the same as HPL sheets

### SCREWS

Screw extraction resistance as in MDF, pre-drilling is recommended.

### CLEANING & CARE

The Aria surface must be treated like a normally veneered, painted surface. Cleaning is possible with a mist-moistened rag.

### BOND

- Commercial wood glues
- Cold pressing
- Pressure 200 kg/m<sup>2</sup>
- For the time of pressing, observe the processing notes of the glue manufacturer or the glue.
- Additions depending on foam film structure / corrugated cardboard or insulating boards.

### COUNTER-PULL

We recommend a 0.8 - 1 mm thick HPL as counter-pull. Unilateral mineral coating means that slight distortions cannot be excluded.

### PACKAGING

Lying on pallet.

### STORAGE

Store dry, interim layers with foam foil or corrugated cardboard. Protect from frost.

### RECYCLING

Product is ecologically harmless, can be recycled and disposed of in the household waste.

## EDGE PASTE INSTALLATION

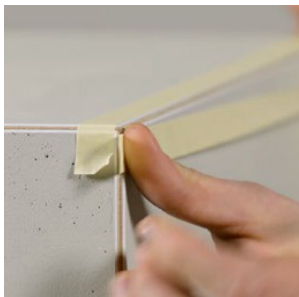
STEP 1.  
Cut the boards mitred and glue them together.



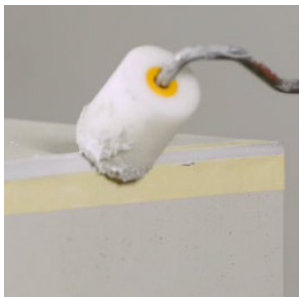
STEP 2.  
After glueing, mill cut the edges with a planer or router.



STEP 3.  
Surface to the edge has to be secured by a masking tape.

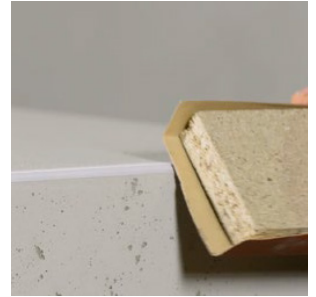


STEP 4.  
Afterwards apply thinly the coating mass #1. Drying time should be at least 4-5 hours. For thicker application allow drying overnight.



JAR #1

STEP 5.  
Take away the masking tape and make a fine grit. (150 grit).



STEP 6.  
Seal with a matte varnish.



STEP 7.  
In order to achieve the original concrete character wipe the varnished and processed area with the patina as final processing. JAR # 2



STEP 8.  
Finally, for higher load capacity, the edges should be varnished again processing.