

R | WOODLAND VIEW PRODUCT SPECIFICATIONS



COLLECTION	Resilient Commercial
STYLE NUMBER	I300V
CONSTRUCTION	Commercial Luxury Vinyl Plank
WEAR LAYER THICKNESS	12 mil / 0.012 inches (0.305 mm)
OVERALL THICKNESS	0.098 inches (2.5 mm)
EDGE PROFILE	Squared Edge
REFERENCE SPECIFICATION	ASTM F1700 Class III printed film vinyl plank Type B (embossed)
FINISH	ExoGuard®
INSTALLATION TYPE	Dry Back
INSTALLATION	Glue Down
RECOMMENDED ADHESIVE	LokWorx+ Resilient, LokWorx+ Resilient, LokWorx Resilient, LokWorx Resilient, S150 or 4151

Packaging

	US Units	Metric Units
PLANK SIZE	6 inches W x 48 inches L	15.2 cm W x 121.9 cm L
PIECES /BOX	18	
AREA /BOX	35.95 sq ft	3.3 sq m
WEIGHT /BOX	30.42 lbs	13.8 kg

Performance Testing

STATIC LOAD / ASTM F970	Passes (Modified), *1500 lbs
RESIDUAL INDENTATION / ASTM F1914	Passes
RESISTANCE TO CHEMICALS / ASTM F925	Passes
RADIANT PANEL / ASTM E648	Passes, Class I
SMOKE DENSITY / ASTM E662	Passes
SLIP RESISTANCE / ASTM D2047	≥0.5, meets the recommended static coefficient of friction for ADA walking surfaces

*Results are based on a laboratory test and used for comparative purposes. Real life load limit may vary.

Test Reports may be included or listed by the manufacturing/inventory style number as opposed to the noted selling style number.

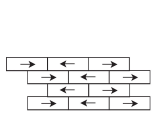
Warranty

7 Year Limited Commercial.

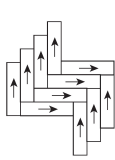
Please visit [patcraft.com](https://www.patcraft.com) for the most current warranty information.

R | WOODLAND VIEW

Installation Methods



Brick



Herringbone



Stagger

[Installation Guidelines](#)

[Maintenance Guidelines](#)

Environmental

FLOORSCORE®

Certified