



Low Embodied Carbon
• Carbon Neutral

patcraft®

M | Carve 12"x48" PRODUCT SPECIFICATIONS



COLLECTION	InTouch
STYLE NUMBER	10566
PRODUCT TYPE	Plank
CONSTRUCTION	Multi-Level Pattern Loop
FIBER TYPE	EcoSolution Q100™ Nylon
DYE METHOD	100% Solution Dyed
PRIMARY BACKING	Non-Woven Synthetic
SECONDARY BACKING	EcoWorx® Tile
TRAFFIC RATING	Heavy

PRODUCT SIZE

AREA PER BOX

PIECES PER BOX

GAUGE

STITCHES

FINISHED PILE THICKNESS

AVERAGE DENSITY

TOTAL THICKNESS

TUFTED YARN WEIGHT

US Units

12 inches x 48 inches

48 ft²

12

1/12 inches

10 per inches

0.167 inches

5174 oz/yd³

0.288 inches

24 oz/yd²

Metric Units

30.48 cm x 121.92 cm

4.46 m²

47.24 per 10 cm

40.68 per 10 cm

4.24 mm

0.19 g/cm³

7.32 mm

813.74 g/m²

Performance Testing

PILL TEST

Pass

RADIANT PANEL

Class I

NBS SMOKE

Less than 450

ELECTROSTATIC PROPENSITY

Less than 3.5 kv

CRI GREENLABEL PLUS

GLP9968

ADA COMPLIANCE

>0.6, meets the recommended static coefficient of friction for ADA walking surfaces and accessible routes

Test Reports may be included or listed by the manufacturing/inventory style number as opposed to the noted selling style number.

Warranty

Lifetime Limited Commercial

Please visit patcraft.com for the most current warranty information.



Low Embodied Carbon
= Carbon Neutral

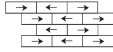
patcraft®

M | Carve 12"x48"

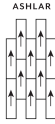
Installation Methods



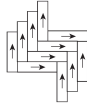
Monolithic



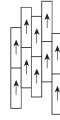
Brick



Ashlar



Herringbone



Stagger



Offset

[Installation Guidelines](#)

[Maintenance Guidelines](#)

Environmental Specifications

RECYCLABILITY

100% recyclable

EMBODIED CARBON (CRADLE TO GATE)

4.98 Kg CO₂/M²

LIFE-CYCLE CARBON EMISSIONS

Carbon Neutral

Materials

Ingredients

DOES NOT CONTAIN

does not contain PVC, phthalates or PBD/PBDE

Recycled Content

TOTAL RECYCLED CONTENT (BY WEIGHT)

61%

PRE-CONSUMER

61%

POST-CONSUMER

0%

COUNTRY OF ORIGIN (MANUFACTURER)

US

Meets or exceeds all local and national regulations in country of manufacture. Manufactured in an ISO9001 & ISO14001 certified facility or equivalent. Recycled content is calculated using system allocation, mass balance, and direct insertion. The actual recycled content in this product will likely vary. For more information email info@patcraft.com.

Third Party Certifications

CRADLE TO CRADLE CERTIFIED®

[Silver Level \(Version 4.0\)](#)

HEALTH PRODUCT DECLARATION (HPD)

[1,000 ppm Disclosure](#)

ENVIRONMENTAL PRODUCT DECLARATION (EPD)

[3rd Party Certified in Accordance with ISO14044, ISO14025 & EN15804](#)

DECLARE

[LBC Compliant](#)

NSF 140

[Gold](#)

CRI GREEN LABEL PLUS (GLP)

[GLP9968](#)

ENVIRONMENTAL GUARANTEE

[Free transport and recycling within the United States and Canada.](#)

PRODUCT PACKAGING

100% Recyclable

USGBC LEED

contributes

BUILDING RESEARCH ESTABLISHMENT

certified

GOOD ENVIRONMENTAL CHOICE AUSTRALIA

certified



Specifications are subject to nominal manufacturing variances. Material supply and/or manufacturing processes may necessitate specification changes without notice. This carpet is an exclusive design and may not be duplicated in any manner. Use of this design in the creation of another carpet design is also strictly prohibited. Visit patcraft.com/testing for more information.

PATCRAFT.COM / @PATCRAFTFLOORS / 800.241.4014

© 2023 Shaw Industries Group, Inc., a Berkshire Hathaway Company

TRANSFORMSPACE

For reference purposes only if printed or downloaded.