

M | Patina

PRODUCT SPECIFICATIONS



COLLECTION	Artefact
STYLE NUMBER	10511
PRODUCT TYPE	Plank
FIBER TYPE	EcoSolution Q100™ Nylon
DYE METHOD	100% Solution Dyed
PRIMARY BACKING	Non-Woven Synthetic
SECONDARY BACKING	EcoWorx® Tile
TRAFFIC RATING	Heavy
PROTECTIVE TREATMENTS	SSP® Shaw Soil Protection
GSA APPROVED PRODUCT	Yes

PRODUCT SIZE
AREA PER BOX
PIECES PER BOX
GAUGE
STITCHES
FINISHED PILE THICKNESS
AVERAGE DENSITY
TOTAL THICKNESS
TUFTED YARN WEIGHT

US Units
12 inches x 48 inches
48 ft ²
12
1/10 inches
9 per inches
0.088 inches
9409 oz/yd ³
0.263 inches
23 oz/yd ²

Metric Units
30.48 cm x 121.92 cm
4.46 m ²
39.37 per 10 cm
33.46 per 10 cm
2.24 mm
0.35 g/cm ³
6.68 mm
779.83 g/m ²

Performance Testing

PILL TEST	Pass
RADIANT PANEL	Class I
NBS SMOKE	Less than 450
ELECTROSTATIC PROPENSITY	Less than 3.5 kv
CRI GREENLABEL PLUS	GLP9968
ADA COMPLIANCE	>0.6, meets the recommended static coefficient of friction for ADA walking surfaces and accessible routes

Test Reports may be included or listed by the manufacturing/inventory style number as opposed to the noted selling style number.

Warranty

Lifetime Commercial Limited

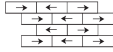
Please visit [patcraft.com](https://www.patcraft.com) for the most current warranty information.

M | Patina

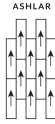
Installation Methods



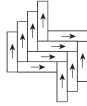
Monolithic



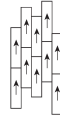
Brick



Ashlar



Herringbone



Stagger

[Installation Guidelines](#)

[Maintenance Guidelines](#)

Environmental Specifications

RECYCLABILITY

100% recyclable

This product is carbon neutral through the purchase of verified offsets, and is manufactured in a carbon neutral facility.

Materials

Ingredients

DOES NOT CONTAIN

does not contain PVC, phthalates or PBD/PBDE

Recycled Content

TOTAL RECYCLED CONTENT (BY WEIGHT)

61%

PRE-CONSUMER

61%

POST-CONSUMER

0%

Meets or exceeds all local and national regulations in country of manufacture. Manufactured in an ISO9001 & ISO14001 certified facility or equivalent. Recycled content is calculated using system allocation, mass balance, and direct insertion. The actual recycled content in this product will likely vary. For more information email info@patcraft.com.

Third Party Certifications

CRADLE TO CRADLE CERTIFIED®

[Silver Level \(Version 4.0\)](#)

HEALTH PRODUCT DECLARATION (HPD)

[1,000 ppm Disclosure](#)

ENVIRONMENTAL PRODUCT DECLARATION (EPD)

[3rd Party Certified in Accordance with ISO14044, ISO14025 & EN15804](#)

DECLARE

[LBC Compliant](#)

NSF 140

[Gold](#)

CRI GREEN LABEL PLUS (GLP)

[GLP9968](#)

ENVIRONMENTAL GUARANTEE

[Free transport and recycling within the United States and Canada.](#)

PRODUCT PACKAGING

100% Recyclable

USGBC LEED

contributes

BUILDING RESEARCH ESTABLISHMENT

certified

GOOD ENVIRONMENTAL CHOICE AUSTRALIA

certified



Specifications are subject to nominal manufacturing variances. Material supply and/or manufacturing processes may necessitate specification changes without notice. This carpet is an exclusive design and may not be duplicated in any manner. Use of this design in the creation of another carpet design is also strictly prohibited. Visit patcraft.com/testing for more information.