

# M | Textural Mark

## PRODUCT SPECIFICATIONS



<b>COLLECTION</b>	InTouch
<b>STYLE NUMBER</b>	10569
<b>PRODUCT TYPE</b>	Plank
<b>CONSTRUCTION</b>	Multi-Level Pattern Loop
<b>FIBER TYPE</b>	EcoSolution Q100™ Nylon
<b>DYE METHOD</b>	100% Solution Dyed
<b>PRIMARY BACKING</b>	Non-Woven Synthetic
<b>SECONDARY BACKING</b>	EcoWorx® Tile
<b>TRAFFIC RATING</b>	Heavy

<b>PRODUCT SIZE</b>
<b>AREA PER BOX</b>
<b>PIECES PER BOX</b>
<b>GAUGE</b>
<b>STITCHES</b>
<b>FINISHED PILE THICKNESS</b>
<b>AVERAGE DENSITY</b>
<b>TOTAL THICKNESS</b>
<b>TUFTED YARN WEIGHT</b>

<b>US Units</b>
12 inches x 48 inches
48 ft <sup>2</sup>
12
1/12 inches
11 per inches
0.169 inches
5112 oz/yd <sup>3</sup>
0.31 inches
24 oz/yd <sup>2</sup>

<b>Metric Units</b>
30.48 cm x 121.92 cm
4.46 m <sup>2</sup>
47.24 per 10 cm
44.62 per 10 cm
4.29 mm
0.19 g/cm <sup>3</sup>
7.87 mm
813.74 g/m <sup>2</sup>

## Performance Testing

<b>PILL TEST</b>	Pass
<b>RADIANT PANEL</b>	Class I
<b>NBS SMOKE</b>	Less than 450
<b>ELECTROSTATIC PROPENSITY</b>	Less than 3.5 kv
<b>CRI GREENLABEL PLUS</b>	GLP9968
<b>ADA COMPLIANCE</b>	>0.6, meets the recommended static coefficient of friction for ADA walking surfaces and accessible routes

Test Reports may be included or listed by the manufacturing/inventory style number as opposed to the noted selling style number.

## Warranty

Lifetime Limited Commercial

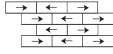
Please visit [patcraft.com](https://www.patcraft.com) for the most current warranty information.

# M | Textural Mark

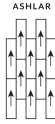
## Installation Methods



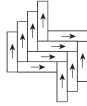
Monolithic



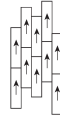
Brick



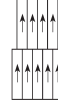
Ashlar



Herringbone



Stagger



Offset

[Installation Guidelines](#)

[Maintenance Guidelines](#)

## Environmental Specifications

### RECYCLABILITY

100% recyclable

## Materials

### Ingredients

#### DOES NOT CONTAIN

does not contain PVC, phthalates or PBD/PBDE

### Recycled Content

#### TOTAL RECYCLED CONTENT (BY WEIGHT)

61%

#### PRE-CONSUMER

61%

#### POST-CONSUMER

0%

Meets or exceeds all local and national regulations in country of manufacture. Manufactured in an ISO9001 & ISO14001 certified facility or equivalent. Recycled content is calculated using system allocation, mass balance, and direct insertion. The actual recycled content in this product will likely vary. For more information email [info@patcraft.com](mailto:info@patcraft.com).

## Third Party Certifications

### CRADLE TO CRADLE CERTIFIED®

Silver Level (Version 4.0)

### HEALTH PRODUCT DECLARATION (HPD)

1,000 ppm Disclosure

### ENVIRONMENTAL PRODUCT DECLARATION (EPD)

3rd Party Certified in Accordance with ISO14044, ISO14025 & EN15804

### DECLARE

LBC Compliant

### NSF 140

Gold

### CRI GREEN LABEL PLUS (GLP)

GLP9968

### ENVIRONMENTAL GUARANTEE

Free transport and recycling within the United States and Canada.

### PRODUCT PACKAGING

100% Recyclable

### USGBC LEED

contributes

### BUILDING RESEARCH ESTABLISHMENT

certified

### GOOD ENVIRONMENTAL CHOICE AUSTRALIA

certified



Specifications are subject to nominal manufacturing variances. Material supply and/or manufacturing processes may necessitate specification changes without notice. This carpet is an exclusive design and may not be duplicated in any manner. Use of this design in the creation of another carpet design is also strictly prohibited. Visit [patcraft.com/testing](http://patcraft.com/testing) for more information.