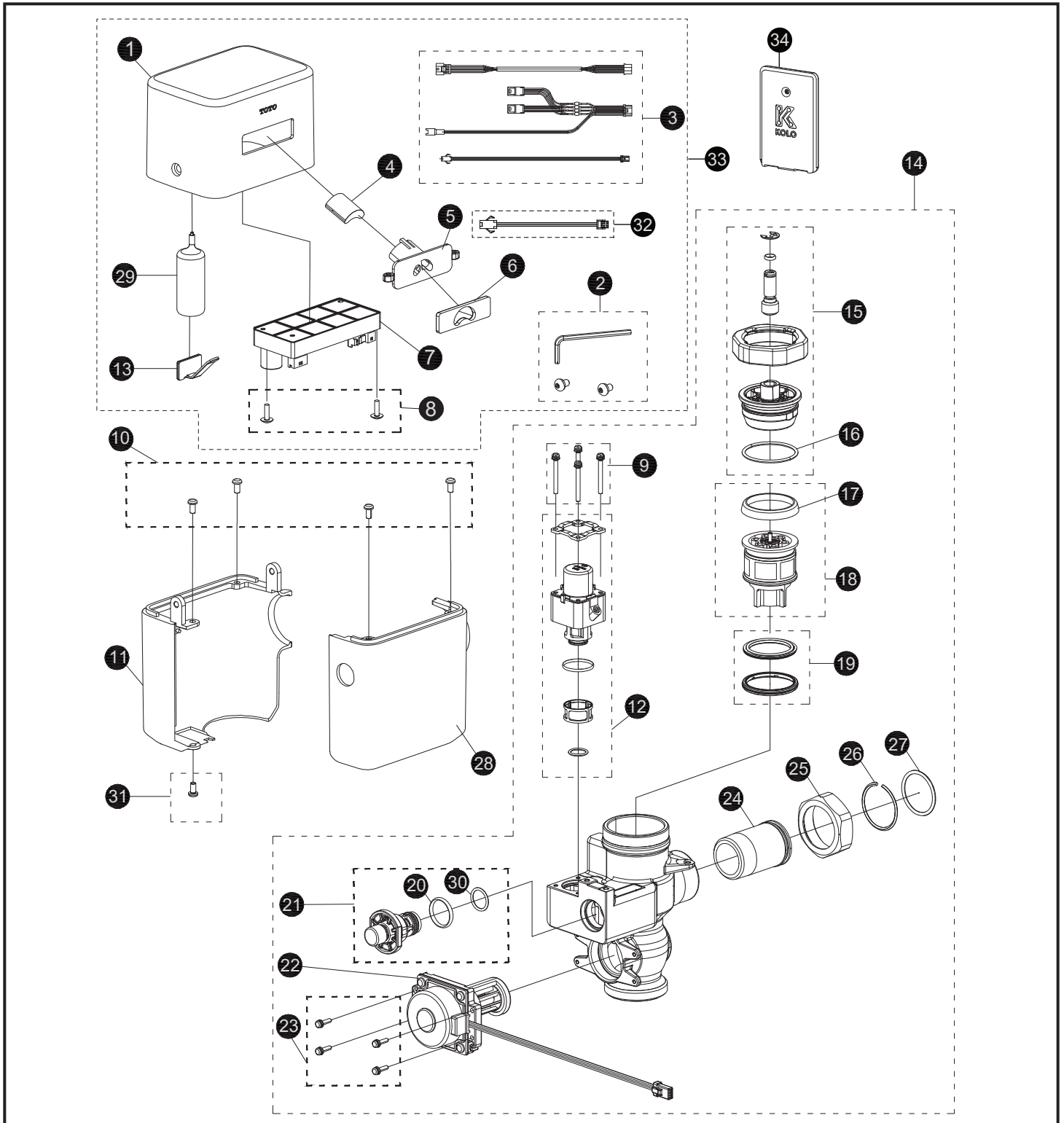


**ECOPOWER® Flush Valve,
Toilet, Exposed, 1.0 Gpf**



**ECOPOWER® Flush Valve,
Toilet, Exposed, 1.0 Gpf**

Item	Part	Description
1	THP3520#CP	Cover, top
	THP3557#CP	Cover, top for IoT Flush Valve
2	THP3521	Screw w/wrench set, exposed
3	THP3522	Extension harness (3 type/bag)
4	THP3523	Sensor unit
5	THP3205	Bracket, sensor w/screw (15D)
6	THP3207	Glass, sensor window, exposed
7	THP3524	Controller unit for 1.0gpf
	THP3552	Controller unit for 1.0gpf IoT Flush Valve
8	THP3208	Screw, controller mount (2/bag)
9	THP3192	Screw (4/bag)
10	THP3527	Screw, cover, valve (4/bag)
11	THP3528#CP	Cover, lower, B
12	THP3190R	Solenoid unit & diaphragm assy
13	TH559EDV517	Clamp set (10/bag)
14	THP3529	Valve assembly, exposed, toilet 1.0gpf
	THP3529X	Valve assembly, exposed, toilet 1.0gpf for Reclaimed Water
15	THP3532	Valve cap assembly
16	THP3533	O-ring, valve cap top
17	TH305SV103	U-packing, piston (10/bag)
18	TH323V104R	Piston assembly
19	THP3534	Seat packing set
20	THP3013	O-ring, screen nut (10/bag)
21	TH559EDV506	Push button assembly
22	TH559EDV503	ECOPOWER generator, toilet
23	TH559EDV505	Screw, ECOPOWER generator
24	TH305SV114	Tailpiece
25	TH305SV113	Nut, tailpiece/angle stop
26	TH305SV105	Locking ring set, tailpiece (10/bag)
27	TH305SV106	O-ring, tailpiece (10/bag)
28	THP3535#CP	Cover, lower, A
29	THP3053	Back-up battery
30	THP3242	O-ring (1/bag)
31	THP3536	Screw, cover, valve(1/bag)
32	THP3515	IoT wire harness
33	THP3546#CP	IoT top unit, 1.0gpf
34		IoT communication card, please contact TOTO sales representative or technical support for more information.

Vacuum Breaker Sets

VB0932B#CP Top Spud, 1-1/2" Outlet, Exposed

VB0932XB#CP Top Spud, 1-1/2" Outlet, Exposed for Reclaimed Water

Note: For additional information, refer to the individual vacuum breaker parts sheets.