

USG
Ceiling
Solutions

SPECIALTY CEILINGS FINISH SELECTORS

USG CEILINGS®
USG CEILINGS PLUS®

USG  CGC
IT'S YOUR WORLD. BUILD IT.™

METAL FINISHES

USG offers metal ceiling panels in several distinctive finishes: Premium Metal, Anodized Metal—Brushed or Polished, Plated Steel, Painted Metals, Wood Appearance, Sarante, and Arboreal. These color reproductions are shown to represent available finishes and colors. A sample should be reviewed before placing an order.

Availability	Premium Metals	Anodized Metals	Ceilings Plus® Anodized Metals	Plated Steel	Painted Metals								Wood Appearance				Diamondflex™ Expanded Metals	Expanse™
					Flat White	Silver Satin	Blanco Mat®	Matte White	Metallic Copper	Metallic Gold	Metallic Oyster	Custom Color	Timbre™	Wood Tones	Sarante®	Arboreal		
USG CELEBRATION™ SNAP-IN METAL PANELS			—	—											—	—	—	—
USG CELEBRATION™ TORSION SPRING METAL CEILING PANELS			—	—									—		—	—	—	—
USG CELEBRATION™ CANOPIES			—	—									—		—	—	—	—
USG COMPASSO™ ELITE USG COMPASSO™ SLIM PERIMETER TRIMS	—	—	—	—			—	—	—	—	—		—	—	—	—	—	—
USG COMPASSO™ STANDARD USG C² PAIRED COMPASSO™ CHANNELS	—	—	—			—	—	—	—	—	—				—	—	—	—
USG CURVATURA™ 3-DIMENSIONAL SUSPENSION SYSTEM—2'X2' PANELS	—	—	—	—			—	—					—		—	—		—
USG CURVATURA™ ONE-DIRECTIONAL SUSPENSION SYSTEM—2'X6' PANELS	—	—	—	—			—	—					—		—	—	—	—
USG GEOMETRIX® 3-DIMENSIONAL METAL PANELS	—	—	—	—			—	—	—	—	—		—	—	—	—	—	—
USG GRIDWARE™ OPEN CELL DECORATIVE SUSPENSION SYSTEM¹	—	—	—	—			—	—	—	—	—		—	—	—	—	—	—
USG LIBRETTO® GRIDLESS METAL SYSTEM	—	—	—	—					—	—	—		—	—	—	—	—	—
USG PANZ® METAL PANELS²			—	—											—	—		—
USG PARALINE® LINEAR METAL SYSTEM	—		—	—			—	—					—	—	—	—	—	—
USG PARALINE® PLUS LINEAR METAL SYSTEM	—		—	—				—							—	—	—	—
USG PARALINE® BAFFLES LINEAR CEILING SYSTEM	—		—	—			—		—	—	—			—	—	—	—	—
USG PIXELS®	—	—	—	—			—	—	—	—	—		—	—	—	—	—	—
USG CEILINGS PLUS® ILLUSIONS®	—	—		—				—	—	—	—		—	—			—	
USG CEILINGS PLUS® RADIAN®	—	—		—				—	—	—	—		—	—			—	—
USG CEILINGS PLUS® BARZ®	—	—		—				—	—	—	—		—	—			—	
USG CEILINGS PLUS® WALLFORMS™	—	—		—				—	—	—	—		—	—			—	—
USG CEILINGS PLUS® PLANX™	—	—		—				—	—	—	—		—	—			—	—
USG CEILINGS PLUS® EXPANSE™	—	—	—	—			—	—	—	—	—		—	—	—	—	—	
USG CEILINGS PLUS® PARTI™	—	—		—				—	—	—	—		—	—			—	—

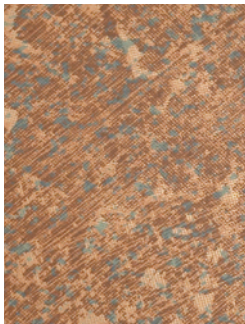
Suspension, trim and panel available in same painted color.

Suspension and trim available in coordinating painted colors only.

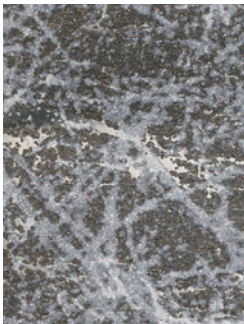
METAL FINISHES

PREMIUM METALS
2'x2' panels only

Aged Copper (1017)



Etched Ice Dark (1016)



Etched Ice Light (1015)



ANODIZED METAL
PANELS¹

USG Celebration™ and
Panz®, 2'x2' and 2'x4'
panels only

Brushed Aluminum (PIA12)



Polished Brass (PM21)



Polished Chrome (PM61)



Satin Chrome (PM614)



CEILING PLUS
ANODIZED METAL
PANELS¹

Illusions®, Barz®, Planx™,
Wallforms™, Beamz®,
Radians®

Kryolite



Grau



Sateen



Notes

1. Anodized finish subject to "rainbowing"—multicolor patterns exaggerated by critical lighting.

METAL FINISHES

PAINTED METALS^{1,2}

Metallic finishes shown
Custom colors available in
painted finishes

Metallic Copper (1690)



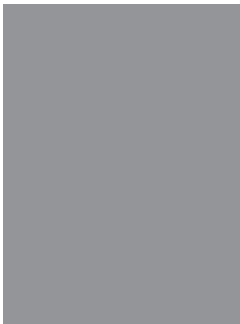
Metallic Gold (1691)



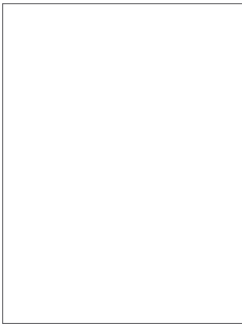
Metallic Oyster (1652)



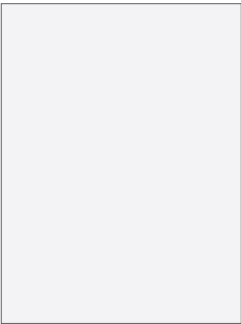
Silver Satin (002)



Flat White (050)



Blanco Mat (4182)



Flat Black



ANODIZED METALS
LINEAR SYSTEMS^{3,4}

USG Paraline® II - Black
Reveal not available with
Anodized finishes

Brushed Aluminum (PIA12)
Paraline® Plus



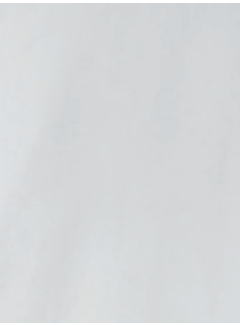
Polished Chrome (PM614)
Paraline® Plus



Brushed Aluminum (058)
Paraline® I & II



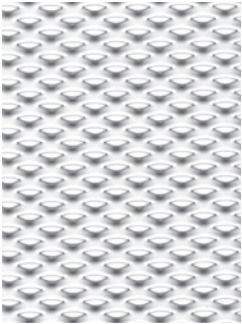
Polished Aluminum (086)
Paraline® I & II



DIAMONDFLEX™

Expanded Metals 2'x2'
panels only

Louvered Bright White



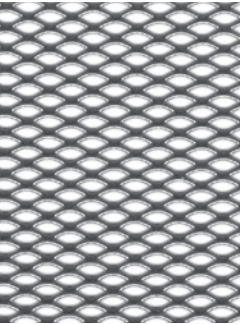
Louvered Bright Silver



Sheer Bright White



Sheer Bright Silver



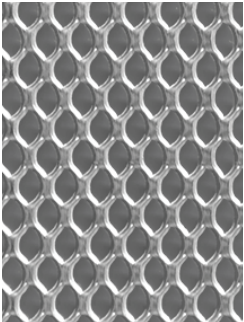
Notes

- 1. Metallic Copper, Metallic Gold and Metallic Oyster available in Paraline® Plus, Paraline® I & II, and in limited metal panel sizes. Paraline® III not available in Metallic finishes.
- 2. Two-foot maximum panel width for painted metallic finishes, except Silver Satin 002.
- 3. Anodized finish subject to "rainbowing"—multicolor patterns exaggerated by critical lighting.
- 4. Paraline® III not available in Anodized finishes.

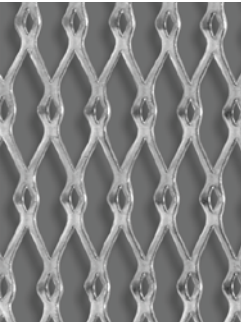
METAL FINISHES

EXPANSE™
Metal patterns

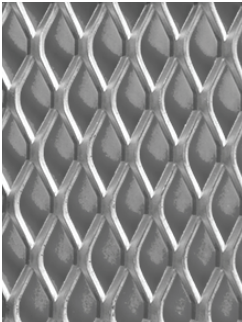
EX-1: Raised (45% Open)



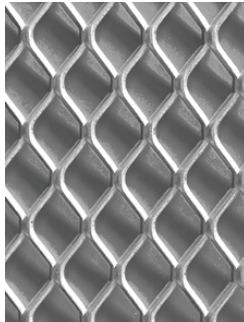
EX-2: Raised (55% Open)



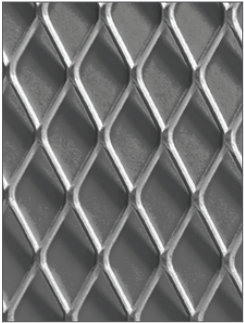
EX-3: Raised (48% Open)



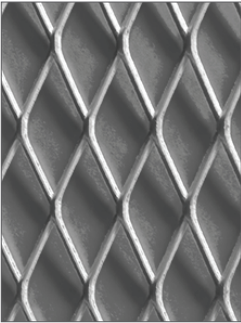
EX-4: Raised (62% Open)



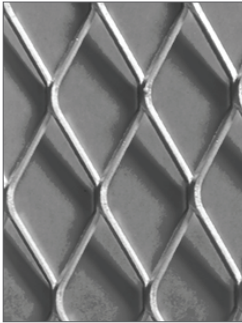
EX-5: Raised (63% Open)



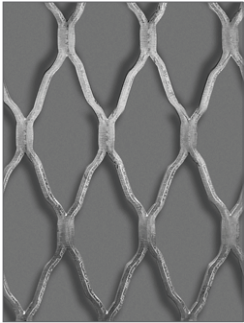
EX-6: Raised (76% Open)



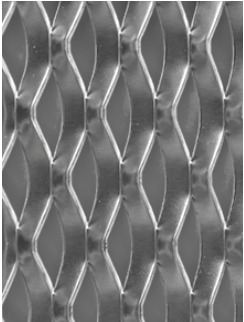
EX-7: Raised (72% Open)



EX-8: Flattened (70% Open)



EX-9: Raised (12% Open)



Standard finishes

Steel Blue



Bronze



Copper



White



Black



Mill



METAL PERFORATIONS

PATTERN NOMENCLATURE

PRODUCT IDENTIFICATION

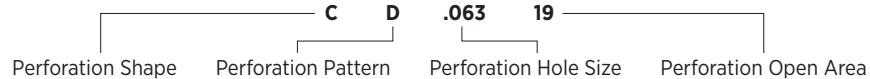
USG has a descriptive nomenclature for identifying perforations. Coding for this system consists of the following four components.

Perforation Shape	Perforation Pattern	Perforation Hole Size	Perforation Open Area
Circle	Straight 90 degree	.XXX"	.XX%
Square	Diagonal 45 degree		
Oround	Equilateral 60 degree ⁷		
Rectangle			

EXAMPLE A:

CD06319

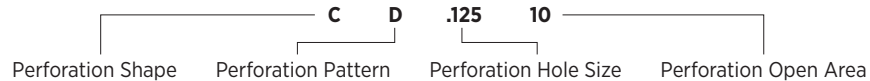
Circle perforation, 45 degrees, .0625" perforation diameter, with 19% open area.



EXAMPLE B:

CD12510

Circle perforation, 45 degrees, .125" perforation diameter, with 10% open area.



CIRCULAR² PERFORATIONS

Pattern Number ⁴	Perforation Pattern Description	Open Area % ¹	NRC ⁷	Previous Pattern
CS03002 ⁵	Circle — 90 degrees — .030"	2%	0.50	C030
CS04002 ⁵	Circle — 90 degrees — .040"	2.2%	0.45-0.50 ⁸	SD-5
CS04003 ⁵	Circle — 90 degrees — .040"	3%	0.55	C040
CD04004 ⁵⁶	Circle — 45 degrees — .040"	4.4%	0.60	SD-6
CS05003 ³⁵⁶	Circle — 90 degrees — .050"	3.1%	0.55	SD-3
CD05006 ⁵⁵⁶	Circle — 45 degrees — .050"	6.3%	0.70	SD-2
CS06302	Circle — 90 degrees — .0625"	2.5%	0.45-0.50 ⁸	C062
CS06303 ³⁶	Circle — 90 degrees — .0625"	3%	0.50	SD-21
CD06305 ³⁶	Circle — 45 degrees — .0625"	5%	0.65	A062A
CD06305NB	Circle — 45 degrees — .0625" (no border)	5%	0.65	A062
CD06310 ³⁶	Circle — 45 degrees — .0625"	10%	0.70	SD-7
CS06310 ⁶	Circle — 90 degrees — .0625"	10%	0.65-0.70 ⁸	C062B
CD06312	Circle — 45 degrees — .0625"	12%	0.55-0.60 ⁸	A062F
CD06319 ³⁶	Circle — 45 degrees — .0625"	19%	0.75-0.80 ⁸	A062D
CE07814 ³⁶	Circle — 60 degrees — .078"	14%	0.75	SD-8
CS07814 ³⁶	Circle — 90 degrees — .078"	14%	0.70-0.75 ⁸	SD-9
CE07906	Circle — 60 degrees — .079"	6%	0.60-0.65 ⁸	B079
CS09405 ⁶	Circle — 90 degrees — .094"	5%	0.75	SD-15
CD09410 ⁶	Circle — 45 degrees — .094"	10%	0.75	SD-11
CS09420 ⁶	Circle — 90 degrees — .094"	20%	0.75-0.80 ⁸	SD-12
CE09420	Circle — 60 degrees — .094"	20%	0.75-0.80 ⁸	SD-10
CS11708 ⁶	Circle — 90 degrees — .1165"	8%	0.65-0.70 ⁸	C116
CD11717 ⁵⁶	Circle — 45 degrees — .1165"	17%	0.70	A116
CS12505 ⁶	Circle — 90 degrees — .125"	5%	0.60-0.65 ⁸	ST-14
CD12510 ⁶	Circle — 45 degrees — .125"	10%	0.65-0.70 ⁸	SD-17
CE12510 ⁶	Circle — 60 degrees — .125"	10%	0.65-0.70 ⁸	B125
CE12520 ⁶	Circle — 60 degrees — .125"	20%	0.75-0.80 ⁸	SD-13

Notes

- Open area % does not have a direct correlation to NRC Value.
- Custom and embossed perforation patterns available. Contact your USG Sales Rep.
- Frequently requested perforation.
- Perforation border size is dependent on panel type, panel size, perforation pattern and available punch tooling. Contact your USG Sales Rep. for details. Illusions panels can be borderless. **CD06305NB** can be used borderless with all panels.
- Perforation may be limited due to material thickness.
- Perforation illustration on following pages.
- NRC values for perforated panels with Acoustibond™ backer tested in accordance with ASTM C423 in type E400 mounting, as described in ASTM E795. Higher NRC values may be achieved with additional acoustical infill, contact your USG Sales Rep.
- NRC range estimated based on testing of panels with similar perforation pattern.

METAL PERFORATIONS

CIRCULAR PERFORATIONS²

Pattern Number ⁴	Perforation Pattern Description	Open Area % ¹	NRC ⁷	Previous Pattern
CS12520⁶	Circle — 90 degrees — .125"	20%	0.75-0.80 ⁸	ST-13
CS18801⁶	Circle — 90 degrees — .188"	1%	0.40-0.45 ⁸	C188
CD18803	Circle — 45 degrees — .188"	3%	0.45-0.50 ⁸	A188
CS18806	Circle — 90 degrees — .188"	6%	0.60-0.65 ⁸	SD-19
CE18820⁶	Circle — 60 degrees — .188"	20%	0.80	SD-14
CS18820	Circle — 90 degrees — .188"	20%	0.75-0.80 ⁸	SD-16
CE18833	Circle — 60 degrees — .188"	33%	0.75-0.80 ⁸	B188A
CD18839⁶	Circle — 45 degrees — .188"	39%	0.75-0.80 ⁸	SD-20/A188C
CE19735	Circle — 60 degrees — .197"	35%	0.75-0.80 ⁸	B197
CS20106	Circle — 90 degrees — .201"	6%	0.60-0.65 ⁸	SD-25
CS20123	Circle — 90 degrees — .201"	23%	0.75-0.80 ⁸	SD-26
CS25012⁶	Circle — 90 degrees — .250"	12%	0.65-0.70 ⁸	C250A
CS25020⁶	Circle — 90 degrees — .250"	20%	0.75	ST-20
CE25030⁶	Circle — 60 degrees — .250"	30%	0.75-0.80 ⁸	B250
CD25039³⁶	Circle — 45 degrees — .250"	39%	0.75-0.80 ⁸	SD-18/A250
CE25058⁶	Circle — 60 degrees — .250"	58%	0.75-0.80 ⁸	B250H
CE31246	Circle — 60 degrees — .312"	46%	0.75-0.80 ⁸	B312
CS37507⁶	Circle — 90 degrees — .375"	7%	0.60-0.65 ⁸	LT-29
CS37509	Circle — 90 degrees — .375"	9%	0.60-0.65 ⁸	C375
CD37515⁶	Circle — 45 degrees — .375"	15%	0.65-0.70 ⁸	LT-27
CS37520⁶	Circle — 90 degrees — .375"	20%	0.70-0.75 ⁸	LT-28
CE37533⁶	Circle — 60 degrees — .375"	33%	0.75-0.80 ⁸	LT-25
CD37539	Circle — 45 degrees — .375"	39%	0.75-0.80 ⁸	LT-26
CS50009⁶	Circle — 90 degrees — .500"	9%	0.60-0.65 ⁸	C500
CS50020⁶	Circle — 90 degrees — .500"	20%	0.70-0.75 ⁸	LT-30
CE50020⁶	Circle — 60 degrees — .500"	20%	0.70-0.75 ⁸	LT-31
CD50039⁶	Circle — 45 degrees — .500"	39%	0.75-0.80 ⁸	LT-33
CD50055	Circle — 45 degrees — .500"	55%	0.75-0.80 ⁸	A500
CE50063⁶	Circle — 60 degrees — .500"	63%	0.75-0.80 ⁸	B500
CS62520	Circle — 90 degrees — .625"	20%	0.70-0.75 ⁸	ST-40
CD62540	Circle — 45 degrees — .625"	40%	0.75-0.80 ⁸	ST-41
CS75028⁶	Circle — 90 degrees — .750"	28%	0.75-0.80 ⁸	LT-34
CS125031⁶	Circle — 90 degrees — 1.250"	31%	0.75-0.80 ⁸	ST-26
CE125031	Circle — 60 degrees — 1.250"	31%	0.75-0.80 ⁸	ST-27

Notes

1. Open area % does not have a direct correlation to NRC Value.
2. Custom and embossed perforation patterns available. Contact your USG Sales Rep.
3. Frequently requested perforation.
4. Perforation border size is dependent on panel type, panel size, perforation pattern and available punch tooling. Contact your USG Sales Rep. for details. Illusions panels can be borderless. **CD06305NB** can be used borderless with all panels.
5. Perforation may be limited due to material thickness.
6. Perforation illustration on following pages.
7. NRC values for perforated panels with Acoustibond™ backer tested in accordance with ASTM C423 in type E400 mounting, as described in ASTM E795. Higher NRC values may be achieved with additional acoustical infill, contact your USG Sales Rep.
8. NRC range estimated based on testing of panels with similar perforation pattern.

METAL PERFORATIONS

SQUARE PERFORATIONS²

Pattern Number ⁴	Perforation Pattern Description	Open Area % ¹	NRC ⁷	Previous Pattern
SS18814⁶	Square — 90 degrees — .188"	14%	0.65-0.70 ⁸	ST-21
SS25011³⁶	Square — 90 degrees — .250"	11%	0.65-0.70 ⁸	D250
SS25025⁶	Square — 90 degrees — .250"	25%	0.75-0.80 ⁸	ST-22
SS37511	Square — 90 degrees — .375"	11%	0.65-0.70 ⁸	D375
SS39415⁶	Square — 90 degrees — .394"	15%	0.65-0.70 ⁸	LT-20
SS39460⁶	Square — 90 degrees — .394"	60%	0.75-0.80 ⁸	LT-21
SS43134	Square — 90 degrees — .431"	34%	0.75-0.80 ⁸	LT-22
SS50011⁶	Square — 90 degrees — .500"	11%	0.65-0.70 ⁸	D500
SS50025⁶	Square — 90 degrees — .500"	25%	0.75-0.80 ⁸	LT-32
SS50070⁶	Square — 90 degrees — .500"	70%	0.75-0.80 ⁸	D500D
SS75036	Square — 90 degrees — .750"	36%	0.75-0.80 ⁸	LT-36

OBROUND PERFORATIONS²

OS06317⁶	Obround — 90 degrees — .0625"	17%	0.70-0.75 ⁸	OB-14
OS06333⁶	Obround — 90 degrees — .0625"	33%	0.75-0.80 ⁸	OB-15
OS09420	Obround — 90 degrees — .094"	20%	0.75-0.80 ⁸	OB-8
OS12523⁶	Obround — 90 degrees — .125"	23%	0.80	OB-10
OS12537⁶	Obround — 90 degrees — .125"	37%	0.75-0.80 ⁸	OB-20
OS18827⁶	Obround — 90 degrees — .188"	27%	0.75-0.80 ⁸	OB-18
OD18827⁶	Obround — 45 degrees — .188"	27%	0.75	OB-19

RETANGULAR PERFORATIONS²

RS12518⁶	Rectangle — 90 degrees — .125"	18%	0.70-0.75 ⁸	LT-39
RS12527⁶	Rectangle — 90 degrees — .125"	27%	0.75	LT-40
RS15657⁶	Rectangle — 90 degrees — .156"	57%	0.75-0.80 ⁸	LT-44
RS25021⁶	Rectangle — 90 degrees — .250"	21%	0.75-0.80 ⁸	LT-42
RS25041⁶	Rectangle — 90 degrees — .250"	41%	0.75-0.80 ⁸	LT-43

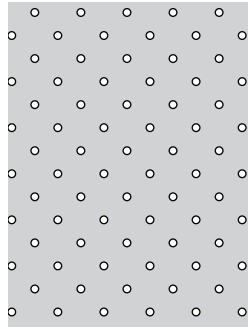
Notes

1. Open area % does not have a direct correlation to NRC Value.
2. Custom and embossed perforation patterns available. Contact your USG Sales Rep.
3. Frequently requested perforation.
4. Perforation border size is dependent on panel type, panel size, perforation pattern and available punch tooling. Contact your USG Sales Rep. for details. Illusions panels can be borderless. **CD06305NB** can be used borderless with all panels.
5. Perforation may be limited due to material thickness.
6. Perforation illustration on following pages.
7. NRC values for perforated panels with Acoustibond™ backer tested in accordance with ASTM C423 in type E400 mounting, as described in ASTM E795. Higher NRC values may be achieved with additional acoustical infill, contact your USG Sales Rep.
8. NRC range estimated based on testing of panels with similar perforation pattern.

METAL PERFORATIONS

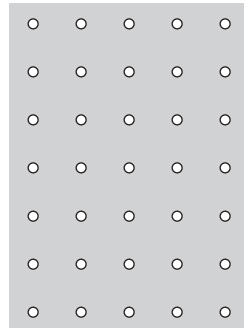
CIRCULAR PERFORATIONS²

Pattern No. CD04004



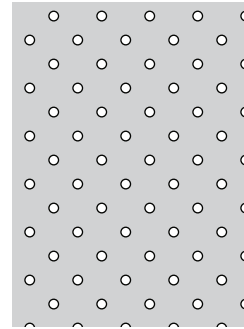
Circle— 45 degrees—.040"
4.4% open area (SD-6)

Pattern No. CS05003



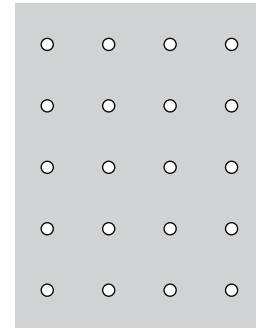
Circle— 90 degrees—.050"
3.1% open area (SD-3)

Pattern No. CD05006



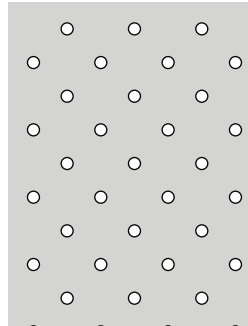
Circle— 45 degrees—.050"
6.3% open area (SD-2)

Pattern No. CS06303



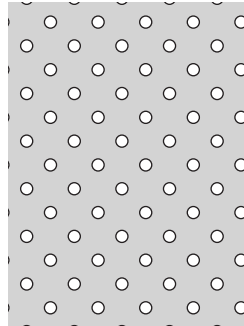
Circle— 90 degrees—.0625"
3% open area (SD-21)

Pattern No. CD06305/CD06305NB



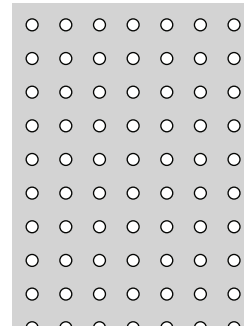
Circle— 45 degrees—.0625"
5% open area (A062A/A062)

Pattern No. CD06310



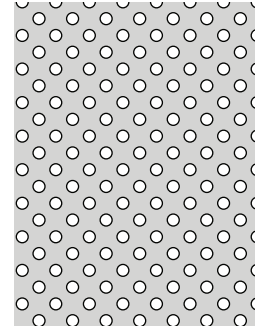
Circle— 45 degrees—.0625"
10% open area (SD-7)

Pattern No. CS06310



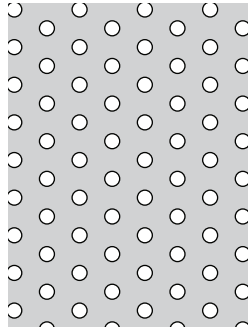
Circle— 90 degrees—.0625"
10% open area (C062A)

Pattern No. CD06319



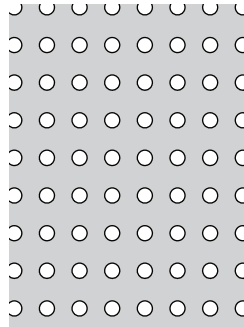
Circle— 45 degrees—.0625"
19% open area (A062D)

Pattern No. CE07814



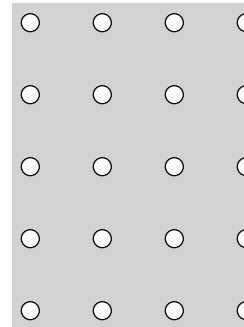
Circle— 60 degrees—.078"
14% open area (SD-8)

Pattern No. CS07814



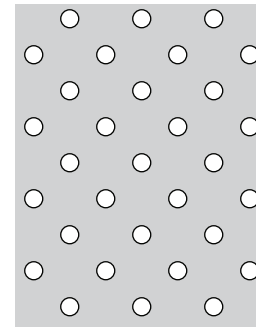
Circle— 90 degrees—.078"
14% open area (SD-9)

Pattern No. CS09405



Circle— 90 degrees—.094"
5% open area (SD-15)

Pattern No. CD09410



Circle— 45 degrees—.094"
10% open area (SD-11)

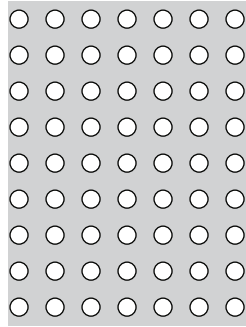
Notes

1. Open area % does not have a direct correlation to NRC Value.
2. Custom and embossed perforation patterns available. Contact your USG Sales Rep.
3. Frequently requested perforation.
4. Perforation border size is dependent on panel type, panel size, perforation pattern and available punch tooling. Contact your USG Sales Rep. for details. Illusions panels can be borderless. **CD06305NB** can be used borderless with all panels.
5. Perforation may be limited due to material thickness.
6. Perforation illustration on following pages.
7. NRC values for perforated panels with Acoustibond™ backer tested in accordance with ASTM C423 in type E400 mounting, as described in ASTM E795. Higher NRC values may be achieved with additional acoustical infill, contact your USG Sales Rep.
8. NRC range estimated based on testing of panels with similar perforation pattern.

METAL PERFORATIONS

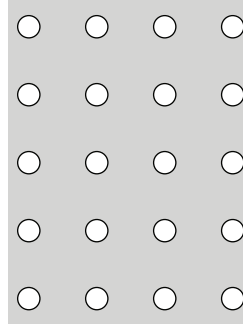
CIRCULAR PERFORATIONS²

Pattern No. CS09420



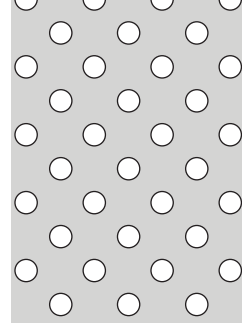
Circle— 90 degrees—.094"
20% open area (SD-12)

Pattern No. CS11708



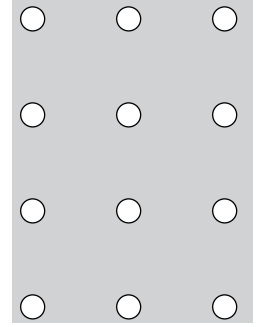
Circle— 90 degrees—.1165"
8% open area (C116)

Pattern No. CD11717



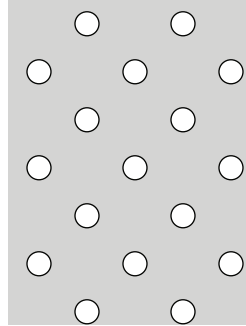
Circle— 45 degrees—.1165"
17% open area (A116)

Pattern No. CS12505



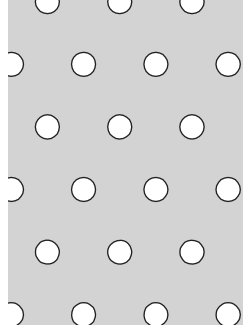
Circle— 90 degrees—.125"
5% open area (ST-14)

Pattern No. CD12510



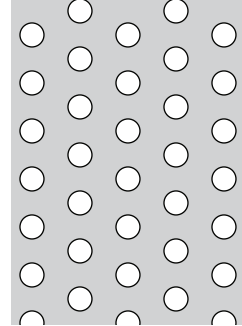
Circle— 45 degrees—.125"
10% open area (SD-17)

Pattern No. CE12510



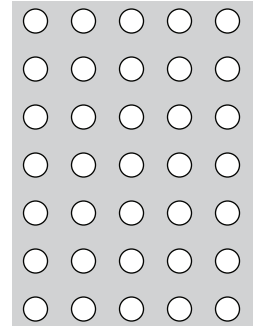
Circle— 60 degrees—.125"
10% open area (B125)

Pattern No. CE12520



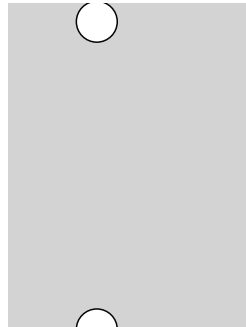
Circle— 60 degrees—.125"
20% open area (SD-13)

Pattern No. CS12520



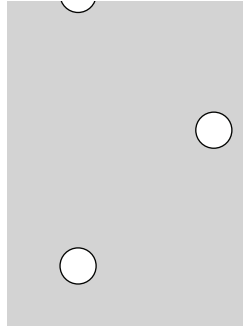
Circle— 90 degrees—.125"
20% open area (ST-13)

Pattern No. CS18801



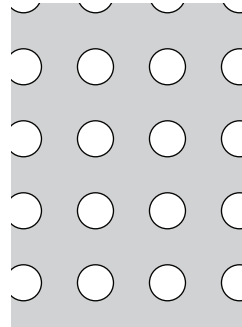
Circle— 90 degrees—.188"
1% open area (C188)

Pattern No. CD18803



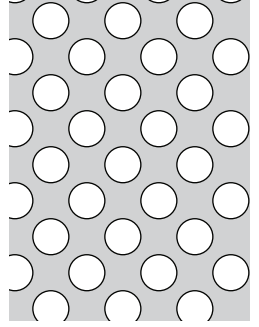
Circle— 45 degrees—.188"
3% open area (A188)

Pattern No. CS18820



Circle— 90 degrees—.188"
20% open area (SD-16)

Pattern No. CD18839



Circle— 45 degrees—.188"
39% open area (SD-20)

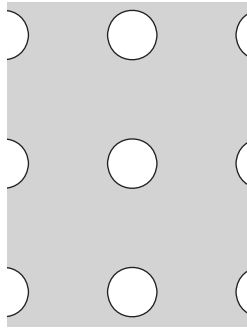
Notes

1. Open area % does not have a direct correlation to NRC Value.
2. Custom and embossed perforation patterns available. Contact your USG Sales Rep.
3. Frequently requested perforation.
4. Perforation border size is dependent on panel type, panel size, perforation pattern and available punch tooling. Contact your USG Sales Rep. for details. Illusions panels can be borderless. **CD06305NB** can be used borderless with all panels.
5. Perforation may be limited due to material thickness.
6. Perforation illustration on following pages.
7. NRC values for perforated panels with Acoustibond™ backer tested in accordance with ASTM C423 in type E400 mounting, as described in ASTM E795. Higher NRC values may be achieved with additional acoustical infill, contact your USG Sales Rep.
8. NRC range estimated based on testing of panels with similar perforation pattern.

METAL PERFORATIONS

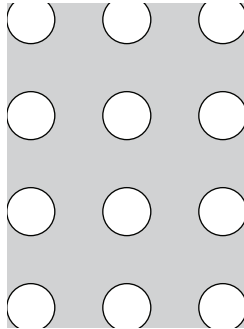
CIRCULAR PERFORATIONS²

Pattern No. CS25012



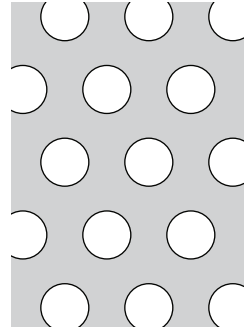
Circle— 90 degrees— .250"
12% open area (C250A)

Pattern No. CS25020



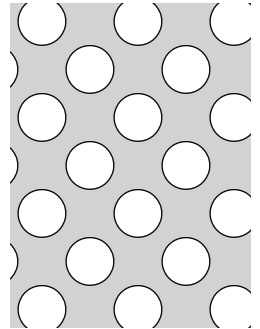
Circle— 90 degrees— .250"
20% open area (ST-20)

Pattern No. CE25030



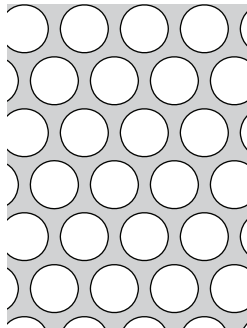
Circle— 60 degrees— .250"
30% open area (B250)

Pattern No. CD25039



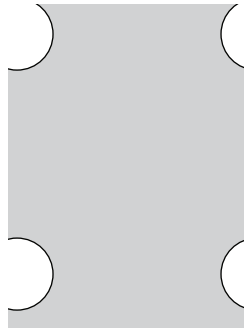
Circle— 45 degrees— .250"
39% open area (SD-18)

Pattern No. CE25058



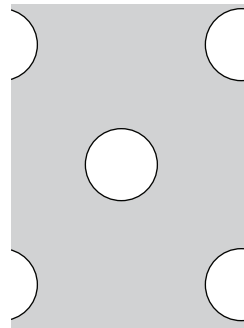
Circle— 60 degrees— .250"
58% open area (B250H)

Pattern No. CS37507



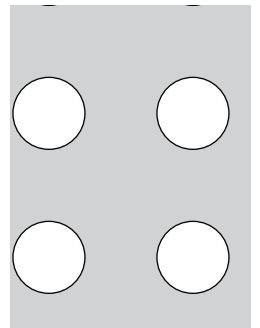
Circle— 90 degrees— .375"
7% open area (LT-29)

Pattern No. CD37515



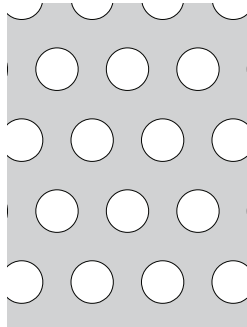
Circle— 45 degrees— .0375"
15% open area (LT-27)

Pattern No. CS37520



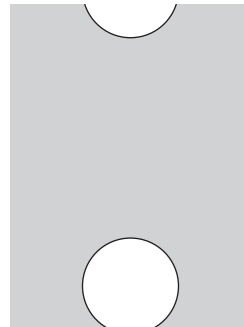
Circle— 90 degrees— .375"
20% open area (LT-28)

Pattern No. CE37533



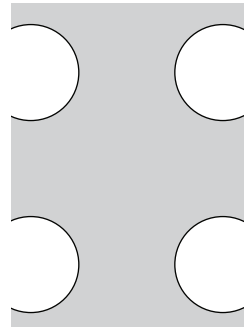
Circle— 60 degrees— .375"
33% open area (LT-25)

Pattern No. CS50009



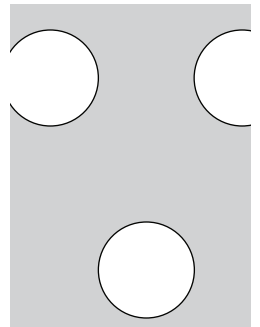
Circle— 90 degrees— .500"
9% open area (C500)

Pattern No. CS50020



Circle— 90 degrees— .500"
20% open area (LT-30)

Pattern No. CE50020



Circle— 60 degrees— .500"
20% open area (LT-31)

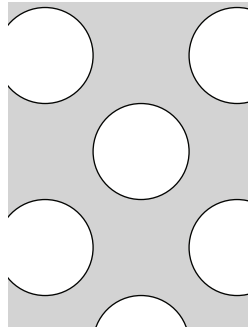
Notes

1. Open area % does not have a direct correlation to NRC Value.
2. Custom and embossed perforation patterns available. Contact your USG Sales Rep.
3. Frequently requested perforation.
4. Perforation border size is dependent on panel type, panel size, perforation pattern and available punch tooling. Contact your USG Sales Rep. for details. Illusions panels can be borderless. **CD06305NB** can be used borderless with all panels.
5. Perforation may be limited due to material thickness.
6. Perforation illustration on following pages.
7. NRC values for perforated panels with Acoustibond™ backer tested in accordance with ASTM C423 in type E400 mounting, as described in ASTM E795. Higher NRC values may be achieved with additional acoustical infill, contact your USG Sales Rep.
8. NRC range estimated based on testing of panels with similar perforation pattern.

METAL PERFORATIONS

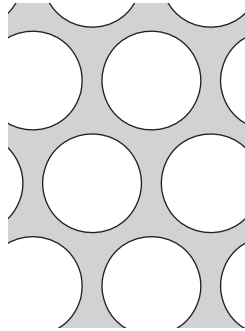
CIRCULAR PERFORATIONS²

Pattern No. CD50039



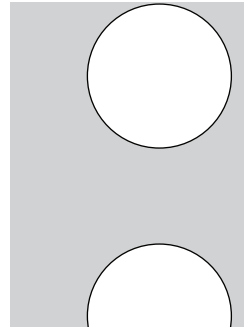
Circle— 45 degrees—.500"
39% open area (LT-33)

Pattern No. CE50063



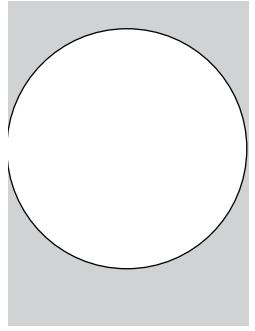
Circle— 60 degrees—.500"
63% open area (B500)

Pattern No. CS75028



Circle— 90 degrees—.7250"
28% open area (LT-34)

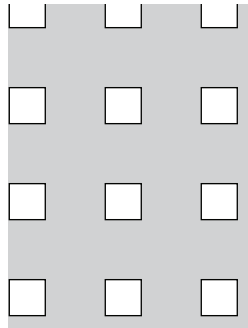
Pattern No. CS125031



Circle— 90 degrees—1.250"
55% open area (ST-26)

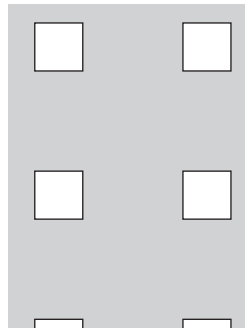
SQUARE PERFORATIONS

Pattern No. SS18814



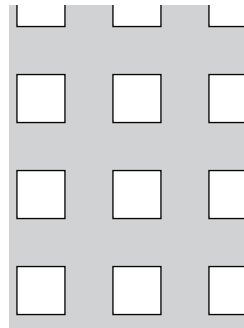
Square— 90 degrees—.188"
14% open area (ST-21)

Pattern No. SS25011



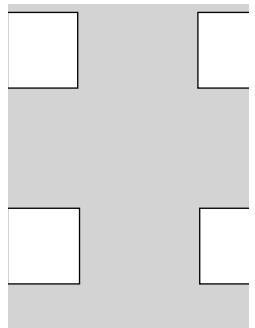
Square— 90 degrees—.250"
11% open area (D250)

Pattern No. SS25025



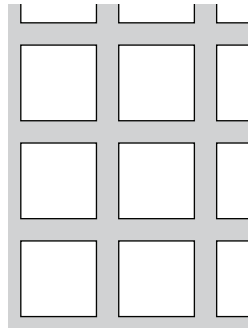
Square— 90 degrees—.250"
25% open area (ST-22)

Pattern No. SS39415



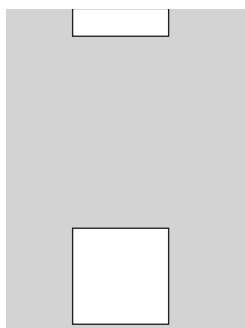
Square— 90 degrees—.394"
15% open area (LT-20)

Pattern No. SS39460



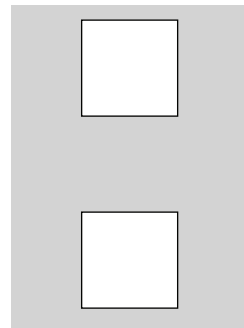
Square— 90 degrees—.394"
60% open area (LT-21)

Pattern No. SS50011



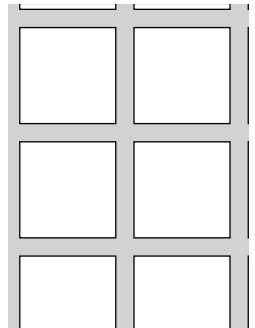
Square— 90 degrees—.500"
11% open area (D500)

Pattern No. SS50025



Square— 90 degrees—.500"
25% open area (LT-32)

Pattern No. SS50070



Square— 90 degrees—.500"
70% open area (D500D)

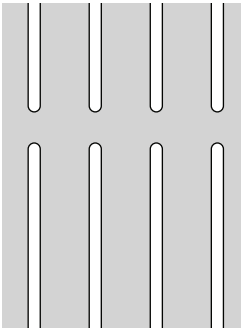
Notes

1. Open area % does not have a direct correlation to NRC Value.
2. Custom and embossed perforation patterns available. Contact your USG Sales Rep.
3. Frequently requested perforation.
4. Perforation border size is dependent on panel type, panel size, perforation pattern and available punch tooling. Contact your USG Sales Rep. for details. Illusions panels can be borderless. **CD06305NB** can be used borderless with all panels.
5. Perforation may be limited due to material thickness.
6. Perforation illustration on following pages.
7. NRC values for perforated panels with Acoustibond™ backer tested in accordance with ASTM C423 in type E400 mounting, as described in ASTM E795. Higher NRC values may be achieved with additional acoustical infill, contact your USG Sales Rep.
8. NRC range estimated based on testing of panels with similar perforation pattern.

METAL PERFORATIONS

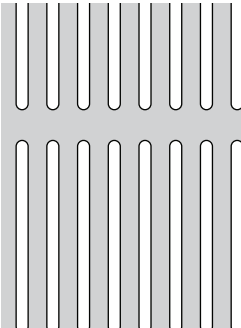
OBOUND PERFORATIONS

Pattern No. OS06317



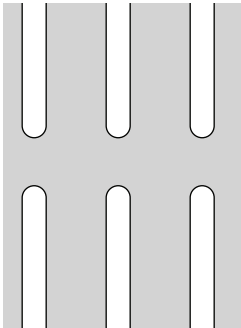
Obround— 90 degrees— .0625"
17% open area (OB-14)

Pattern No. OS06333



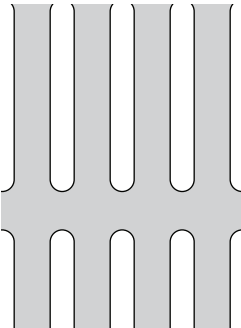
Obround— 90 degrees— .0625"
33% open area (OB-15)

Pattern No. OS12523



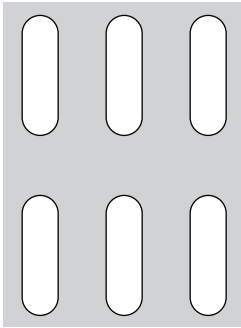
Obround— 90 degrees— .125"
23% open area (OB-10)

Pattern No. OS12537



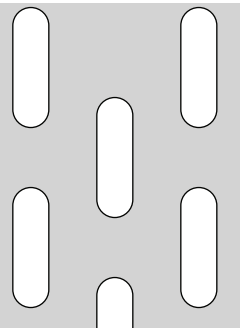
Obround— 90 degrees— .125"
37% open area (OB-20)

Pattern No. OS18827



Obround— 90 degrees— .188"
27% open area (OB-18)

Pattern No. OD18827



Obround— 45 degrees— .188"
27% open area (OB-19)

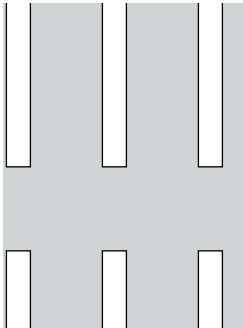
Notes

1. Open area % does not have a direct correlation to NRC Value.
2. Custom and embossed perforation patterns available. Contact your USG Sales Rep.
3. Frequently requested perforation.
4. Perforation border size is dependent on panel type, panel size, perforation pattern and available punch tooling. Contact your USG Sales Rep. for details. Illusions panels can be borderless. **CD06305NB** can be used borderless with all panels.
5. Perforation may be limited due to material thickness.
6. Perforation illustration on following pages.
7. NRC values for perforated panels with Acoustibond™ backer tested in accordance with ASTM C423 in type E400 mounting, as described in ASTM E795. Higher NRC values may be achieved with additional acoustical infill, contact your USG Sales Rep.
8. NRC range estimated based on testing of panels with similar perforation pattern.

METAL PERFORATIONS

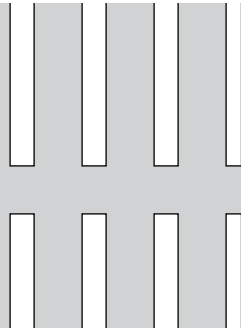
RECTANGULAR PERFORATIONS

Pattern No. RS12518



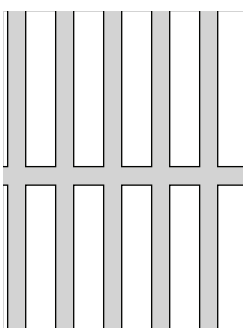
Rectangle— 90 degrees— .125"
18% open area (LT-39)

Pattern No. RS12527



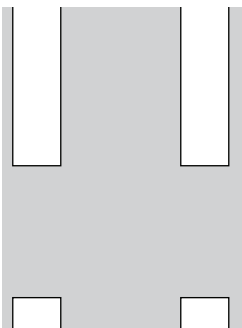
Rectangle— 90 degrees— .125"
27% open area (LT-40)

Pattern No. RS15657



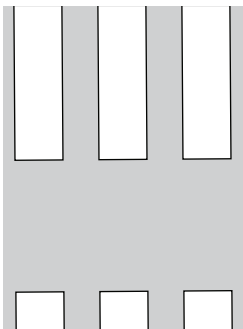
Rectangle— 90 degrees— .156"
57% open area (LT-44)

Pattern No. RS25021



Rectangle— 90 degrees— .250"
21% open area (LT-42)

Pattern No. RS25041



Rectangle— 90 degrees— .250"
41% open area (LT-43)

Notes

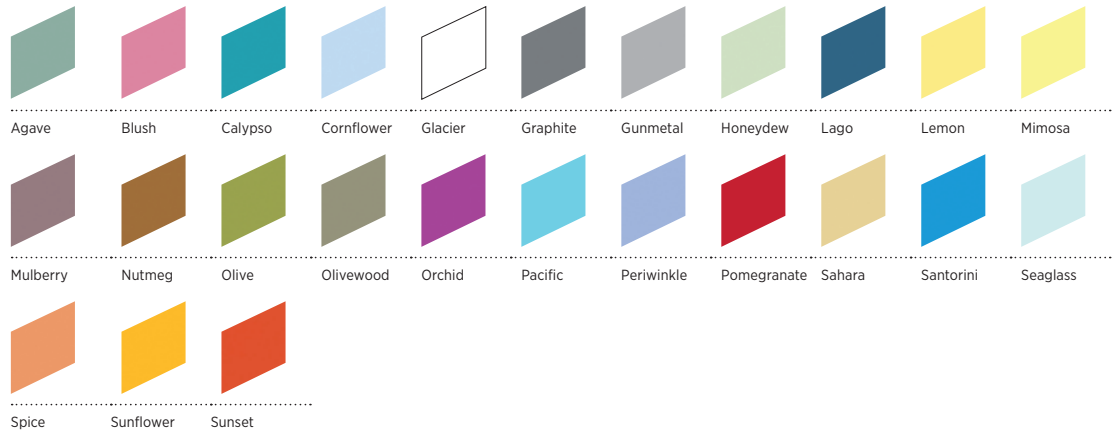
1. Open area % does not have a direct correlation to NRC Value.
2. Custom and embossed perforation patterns available. Contact your USG Sales Rep.
3. Frequently requested perforation.
4. Perforation border size is dependent on panel type, panel size, perforation pattern and available punch tooling. Contact your USG Sales Rep. for details. Illusions panels can be borderless. **CD06305NB** can be used borderless with all panels.
5. Perforation may be limited due to material thickness.
6. Perforation illustration on following pages.
7. NRC values for perforated panels with Acoustibond™ backer tested in accordance with ASTM C423 in type E400 mounting, as described in ASTM E795. Higher NRC values may be achieved with additional acoustical infill, contact your USG Sales Rep.
8. NRC range estimated based on testing of panels with similar perforation pattern.

USG TRANSLUCENTS™ FINISHES

USG offers luminous ceiling panels in several distinctive styles and finishes. These color reproductions are shown to represent available finishes and colors. Décors are not to scale. A sample should be reviewed before placing an order.

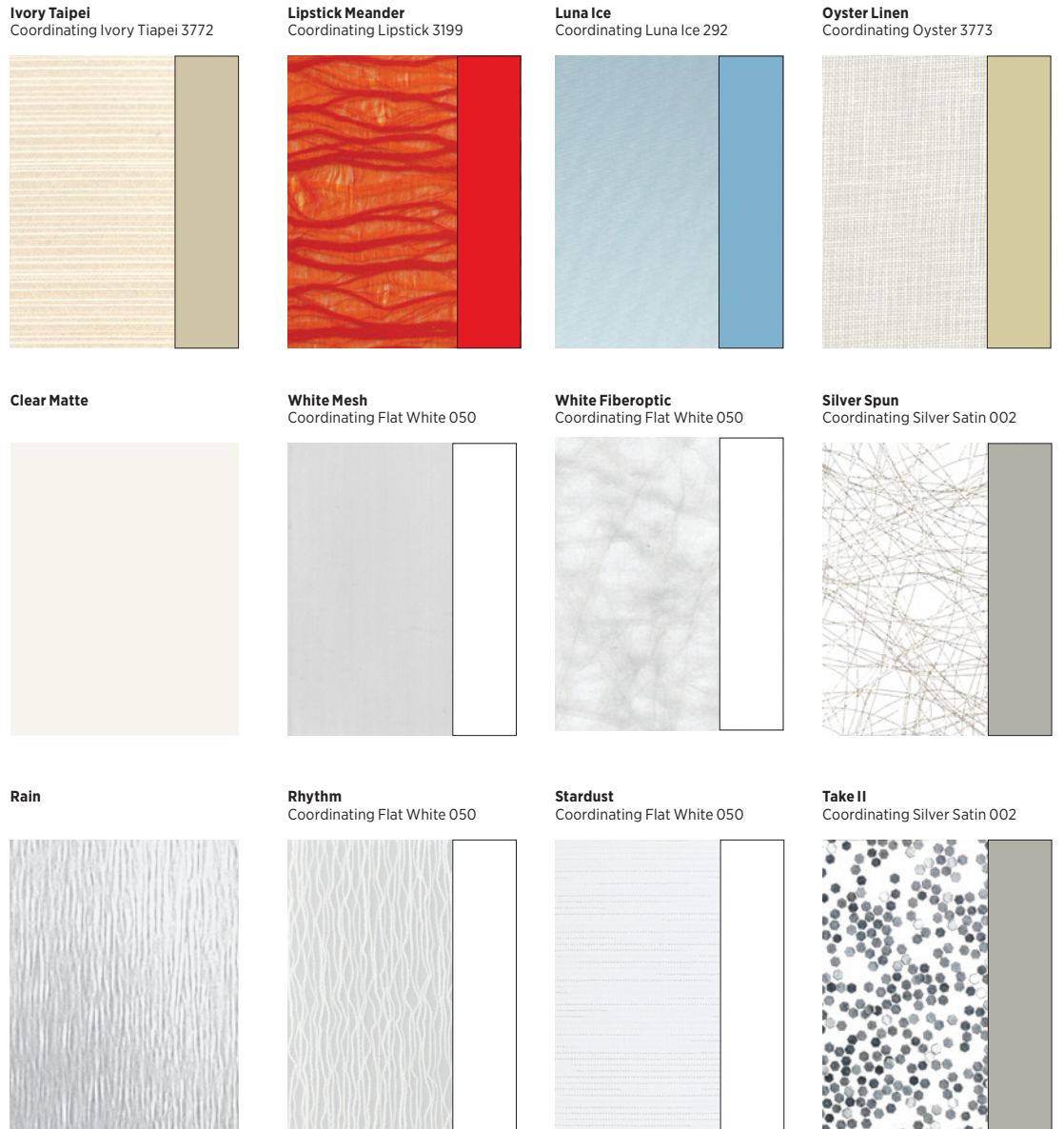
COLOR GALLERY

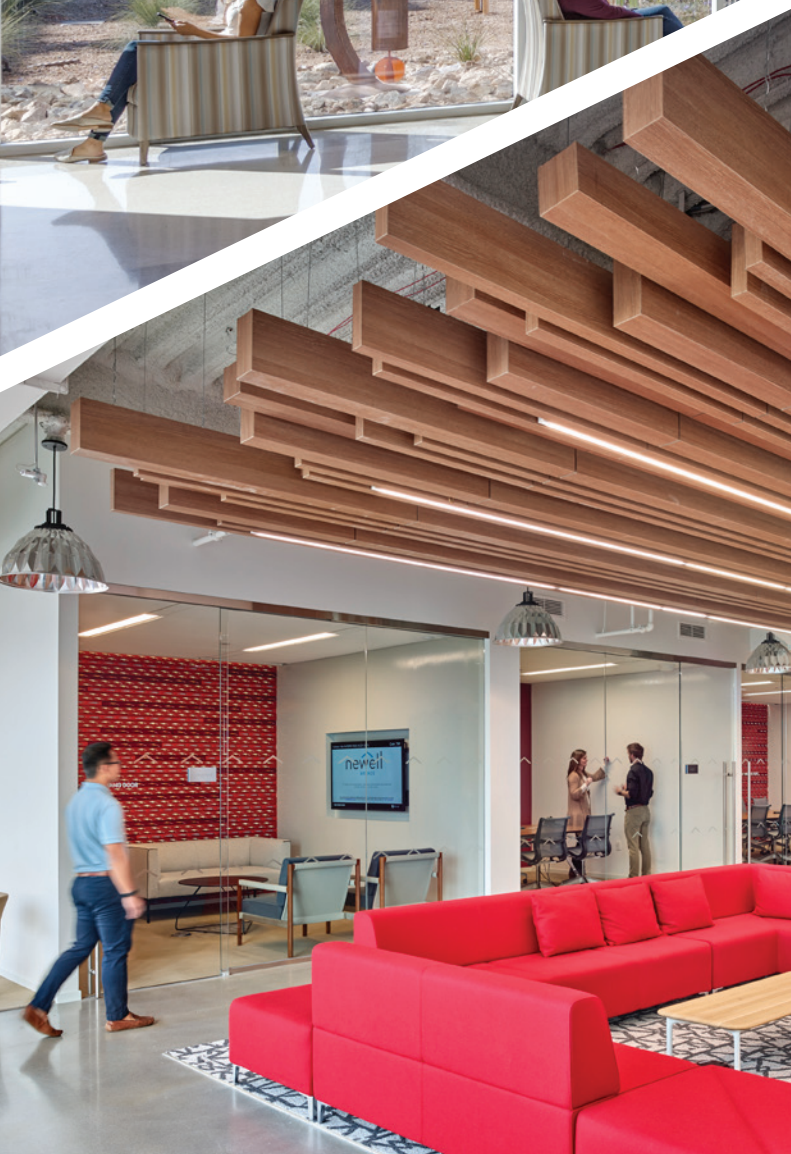
For USG Billo™,
Translucents™ Panels and
Translucents™ Canopies



DÉCORS

Shown with Coordinating
Suspension Color





WOOD FINISHES

USG SPECIALTY

WOOD TONES
FAUX FINISHES^{1, 3}

Coordinating suspension
and/or trim color
available.

Beech (3810)



Dark Bamboo (3808)



Dark Cherry (3811)



Light Bamboo (3809)



Light Cherry (3812)



Maple (3813)



Red Oak (3814)



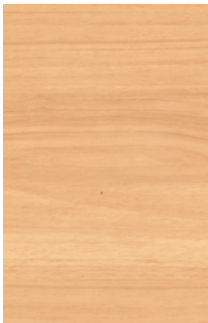
Walnut (3815)



TIMBRE^{TM1, 3}

Print finish on Metal
Coordinating suspension
and/or trim color available

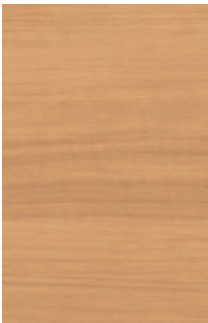
Maple (4010)



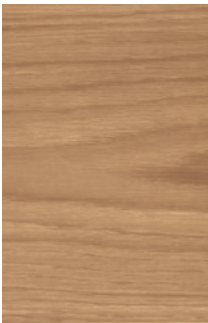
VG Fir (4011)



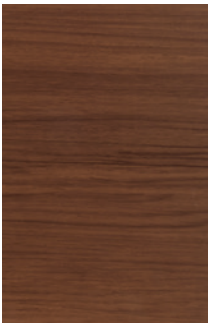
Red Birch (4012)



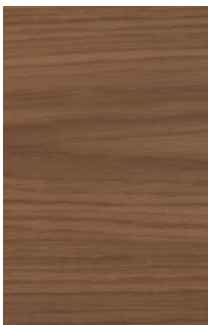
Golden Glow Oak (4198)



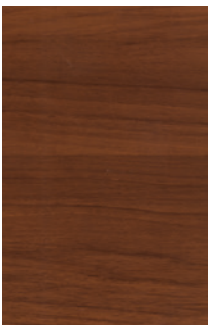
Walnut (4014)



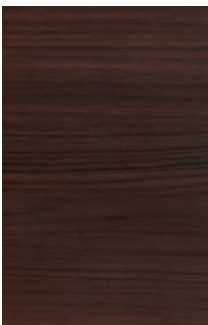
Roasted Chestnut (4197)



Cherry (4013)



Mahogany (4015)



Driftwood (4199)



Notes

1. Color Disclaimer: Printed and/or online color swatches are only reproductions of actual standards and will vary in appearance due to differences in monitor and printer output.
2. Wood Disclaimer: Wood is a natural grain product with variations in grain, texture and color often ranging from light to dark, thereby affecting the surface look. Product finishes are spray-applied stain or sealer coats.
3. Faux wood finishes exhibit variations in grain, texture and color often ranging from light to dark, thereby affecting the surface look from one item to another.

WOOD FINISHES - USG SPECIALTY

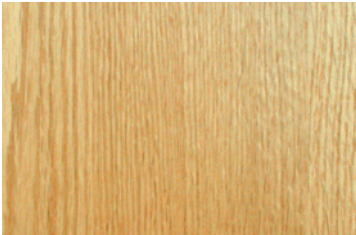
TRUE® WOOD
PANELS AND
LINEAR PLANKS^{1,2}
Veneer

PLAIN SLICE

Maple
Book Matched, 20% Sheen, Clear



Red Oak
Book Matched, 20% Sheen, Clear



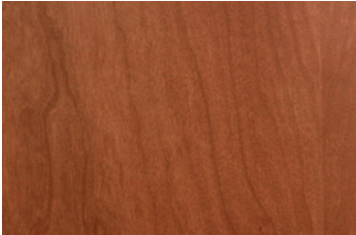
Walnut
Book Matched, 20% Sheen, Clear



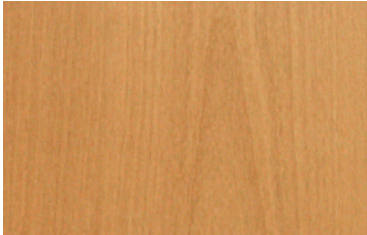
Light Cherry
Book Matched, 20% Sheen, Clear



Dark Cherry
Book Matched, 20% Sheen, Clear



Beech
Book Matched, 20% Sheen, Clear



BAMBOO

Light Bamboo
Natural
Narrow Band, 20% Sheen, Clear



Dark Bamboo
Amber
Narrow Band, 20% Sheen, Clear



TRUE® WOOD
GRILLES^{1,2}
Solid Wood

Maple
Solid White Hardwood, Stained
20% Sheen, Clear



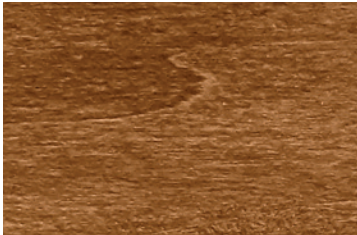
Red Oak
Solid White Hardwood, Stained
20% Sheen, Clear



Walnut
Solid White Hardwood, Stained
20% Sheen, Clear



Light Cherry
Solid White Hardwood, Stained
20% Sheen, Clear



Dark Cherry
Solid White Hardwood, Stained
20% Sheen, Clear



Notes

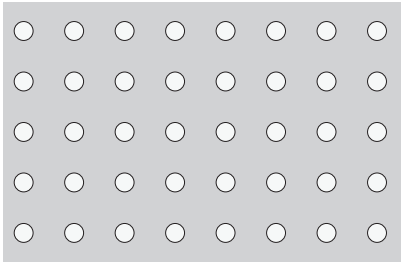
- 1. Color Disclaimer: Printed and/or online color swatches are only reproductions of actual standards and will vary in appearance due to differences in monitor and printer output.
- 2. Wood Disclaimer: Wood is a natural grain product with variations in grain, texture and color often ranging from light to dark, thereby affecting the surface look. Product finishes are spray-applied stain or sealer coats.
- 3. Faux wood finishes exhibit variations in grain, texture and color often ranging from light to dark, thereby affecting the surface look from one item to another.

WOOD FINISHES - USG SPECIALTY

TRUE® WOOD
PERFORATION
OPTIONS

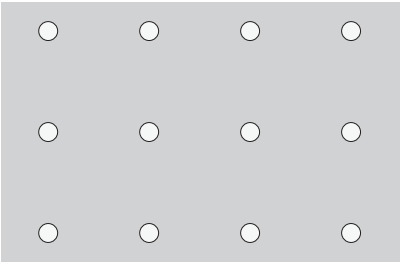
The perforation options are
not demonstrated here at
actual size.

W100



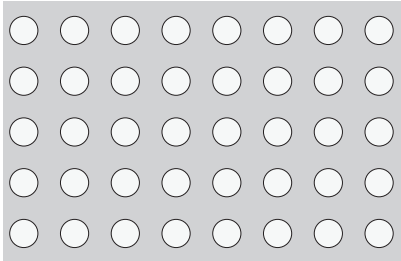
6mm hole on 16mm spacing
10% open area

W200



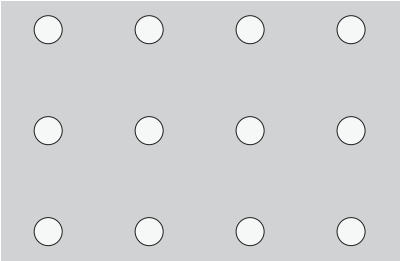
6mm hole on 32mm spacing
3% open area

W300



8mm hole on 16mm spacing
20% open area

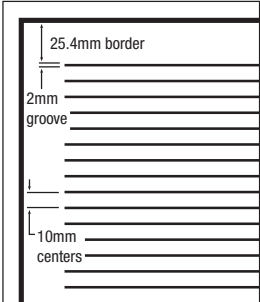
W400



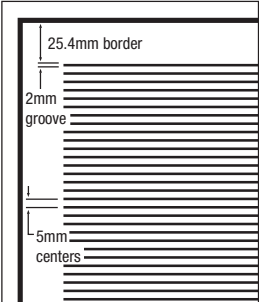
8mm hole on 32mm spacing
5% open area

CHANNEL
OPTIONS

W500 with Border
3.8mm groove depth



W600 with Border
3.8mm groove depth



WOOD FINISHES - USG CEILINGS PLUS®

ARBOREAL®1, 2
Real wood veneer
Interior only



SARANTE®1, 3
PVC free laminate



Notes

1. Color Disclaimer: Printed and/or online color swatches are only reproductions of actual standards and will vary in appearance due to differences in monitor and printer output.

2. Wood Disclaimer: Wood is a natural grain product with variations in grain, texture and color often ranging from light to dark, thereby affecting the surface look. Product finishes are spray-applied stain or sealer coats.

3. Faux wood finishes exhibit variations in grain, texture and color often ranging from light to dark, thereby affecting the surface look from one item to another.

* Available in exterior

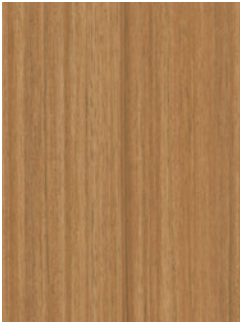
** Available in 48" wide

***Available in both exterior and 48" wide

WOOD FINISHES - USG CEILINGS PLUS®

SARANTE®1,3 (CONT)
PVC free laminate

S25 Natural Ovang



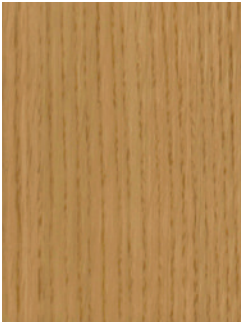
S34 Cherry Anigre



S14N Cinnamon Cherry



S22 Oak Line



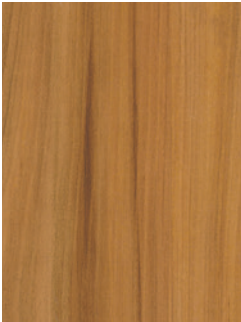
S24N Grey Cedar



S35N2 Cherry Birch



S15 Blond Pear



S37 Dark Jatoba**



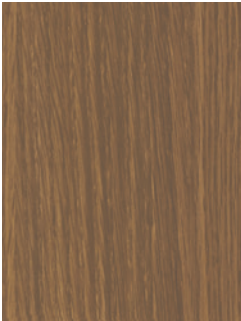
S36N European Cherry



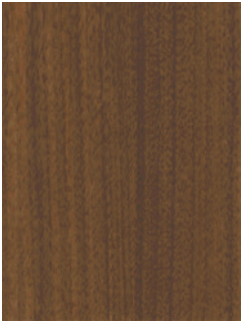
S16N Tan Sawn Oak



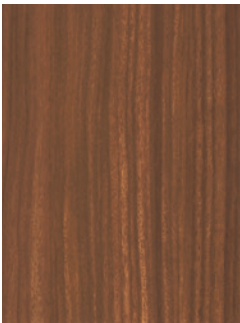
S17 Dark Oak



S27 Forest Walnut**



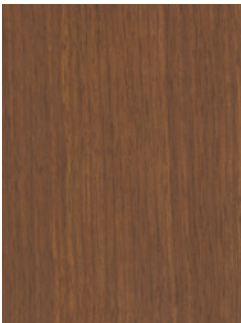
S26 Earth Rosewood



S18 Sable Walnut*



S38 Natural Walnut*



Notes

1. Color Disclaimer: Printed and/or online color swatches are only reproductions of actual standards and will vary in appearance due to differences in monitor and printer output.
 2. Wood Disclaimer: Wood is a natural grain product with variations in grain, texture and color often ranging from light to dark, thereby affecting the surface look. Product finishes are spray-applied stain or sealer coats.
 3. Faux wood finishes exhibit variations in grain, texture and color often ranging from light to dark, thereby affecting the surface look from one item to another.
- * Available in exterior
** Available in 48" wide
***Available in both exterior and 48" wide

PRODUCT INFORMATION

For the most up-to-date technical information, visit usgdesignstudio.com or cgcdesignstudio.com

CUSTOMER SERVICE

USG: 800 950-3839

CGC: 800 387-2690

TECHNICAL SERVICE

800 USG.4YOU (874-4968)

WEBSITES

usg.com

cgcinc.com

usgdesignstudio.com

cgcdesignstudio.com

SAMPLES/LITERATURE

USG: usg.com or samplit@usg.com

CGC: Contact Local Sales Rep

SC2954/rev. 8-23

© 2023 USG Corporation and/or its affiliates. All rights reserved. The trademarks USG, CGC, USG CEILINGS PLUS, ARBOREAL, ACOUSTIBOND, BARZ, BILLO, CELEBRATION, COMPASSO, CURVATURA, DIAMONDFLEX, EXPANSE, GEOMETRIX, GRIDWARE, ILLUSIONS, LIBRETTO, PANZ, PARALINE, PARTI, PIXELS, PLANX, RADIANS, SARANTE, TIMBRE, TOPO, TRANSLUCENTS, TRUE, WALLFORMS, IT'S YOUR WORLD, BUILD IT., the USG and CGC logo, the design elements and colors, and related marks are trademarks of USG Corporation or its affiliates.

