



S19392

Enclosed Outdoor Gravity Fed Safety Shower

- Ideal for cold climates where plumbed water supply is not available
- Mechanical water level indicator and thermometer included
- Classified by Underwriters Laboratories Inc. to ANSI/ISEA Z358.1.
- Designed to the National Electric Code
- Three piece water tank enclosure, steel frame and shelter construction for easier installation and maintenance
- Frame and tank enclosure design based on International Building Code and ASCE Code
- UL 508A Listed Industrial Control Panel(s) for US and Canada for electrical models
- 550 gallon tank provides ANSI/ISEA Z358.1 required 15 minute flush for simultaneous drench shower and eye/face wash activation

Lower Shelter

- 100% Fiberglass Surround Construction – Exterior Includes UV Inhibitor Gel-Coat
- Flame-Retardant Resin with a Class 1 Flame Spread Index per ASTM E-84
- Multi-directional drain system
- Insulation Factor Protection Rating R-8 (ASTM C518)

Standard Equipment

Safety Shower, Eyewash

The standard plastic showerhead is specially designed to exceed the flow and wash pattern requirements of ANSI/ISEA Z358.1. The head can easily be unscrewed for cleaning. Shower is activated by a stainless steel pull rod.

The Halo eye/face wash system offers a high performance rinsing platform that provides rapid relief to an individual's eyes that have been injured by chemicals or particulates. The eye/face wash provides water at a safe velocity while maintaining its effectiveness (exceeds minimum water flow of 3.0 GPM (11.4 L)). The eye/face wash is protected by flip open dust covers that open when the product is activated or by a full bowl dust cover that activates the unit when it is opened. Eye/face wash sprayheads are made from an impact resistant ABS plastic or from durable 304 stainless steel with electro-polished finish.

Water Tank and Enclosure

The 550 gallon tank is made of high density polyethylene and surrounded by insulation and a safety yellow painted steel enclosure. An accessible manhole cover is located on top of the water tank. The water tank supplies enough water to provide the ANSI required 15 minute flush for simultaneous drench shower and eye/face wash activation. The 2" thick insulation around the water tank has a factor protection rating of R-10. The steel tank enclosure is designed to support a nominal snow load of 100 psf. The top of the tank enclosure is hinged and balanced with gas springs for easy opening.

Integral forklift slots located on the underside of the tank enclosure make initial installation easier. During installation, the tank enclosure is fastened to the steel frame using fasteners. A forklift can also bring the tank enclosure down to ground level if needed for cleaning or maintenance.

Tank Water Heater

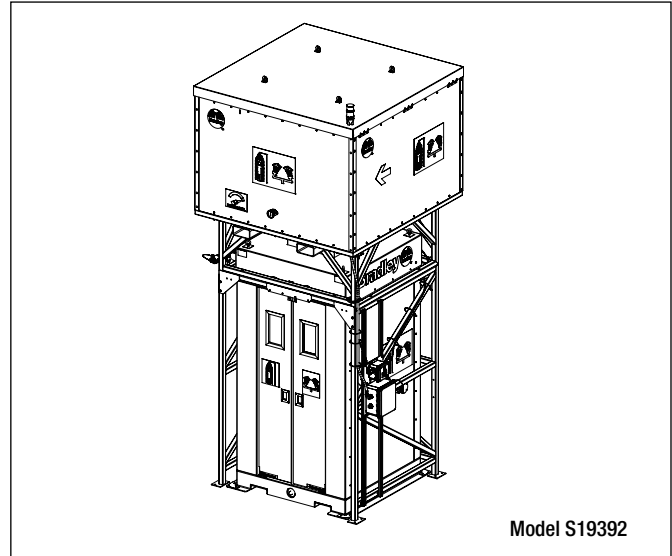
Immersion water heater provides tepid water in cold environments and functions in temperatures down to -40°F. Tank heater includes an adjustable integral thermostat for reliable water temperature control. Water heater will be continuously immersed when the tank empties; the thermostat will shut the heater off when maximum temperature is reached regardless of tank water depth.

Steel Frame

The steel frame is designed to support all components and a full water tank and is composed of 2" square steel beams with welded joints. It must be secured to a suitable concrete pad using (8) 1/2" diameter anti-corrosion expansion anchors (installer provided). Once properly secured, the steel frame structure is designed to withstand a continuous horizontal wind load of 82 mph. Painted safety yellow to protect against corrosion.

Water Connection

1-1/2" cam lock water connection to fill the tank is available at ground level for safety and is also more convenient for filling of the tank with potable water.



Model S19392

Water Level Indicator

A mechanical float inside the water tank is linked to an exterior water level indicator to easily allow the tank water level to be checked at all times.

Water Thermometer

A water thermometer is always included on the front exterior wall of the tank to allow for monitoring of the water temperature.

Lower Shelter Construction - External

Shelter

The lower shelter is installed below the tank enclosure and is constructed from 100% FRP (fiberglass-reinforced plastic) that is laminated and sealed around an insulating core. The FRP is coated with a UV-inhibiting gel coat to protect the roof, walls and base from degradation due to prolonged exposure to sunlight, harsh chemicals or salt-laden marine environments.

A special flame-retardant polyester resin has a Class 1 flame spread index per ASTM E-84 and a smoke developed index of more than 450.

The corrosion-resistant enclosure helps protect against internal freezing with an insulation factor of R-8.

Exterior of shelter is safety yellow (RAL-1018), and includes safety decals directing the injured party to the weather resistant double-acting spring hinge doors that include stainless steel handles and safety glass viewing windows. The crash doors include weather strips to maintain the maximum seal against wind, rain and snow.

The FRP base includes extruded channels for added protection when moving the shelter with a fork truck. Stainless steel lifting eyes are attached to the roof, permitting optional crane lifting when placing the unit.

Product Compliance



UL Classified to ANSI/ISEA Z358.1



UL Listed Industrial Control Panel(s) for US and Canada

Designed to the National Electrical Code (NEC/NFPA70)



Bradley Enclosed Outdoor Gravity Fed Safety Showers are non-cancelable, non-refundable and non-returnable.

© 2023 Bradley



Lower Shelter Construction - Internal

Shower Drain

The shower area includes a sloped drain below a removable fiberglass floor grate. Three drain ports are provided (left, center, right) and can be connected to external drain plumbing in any configuration using a 3" NPT fitting in any port.

Convection Heater

Internal convection space heater prevents water from freezing in the pipes down to -40°F and maintains a comfortable enclosed temperature.

Ceiling Light

Unit can be ordered with a ceiling mounted vapor sealed light (continuous illumination) or internal ceiling light with motion detector technology.

Optional Equipment

Signaling System

The signaling system is mounted to the steel frame and operates from one central control board. It offers several different easy to connect inputs and outputs and allows for a direct connection to a building management system. The integral horn operates at 108 dB at 2 feet to cut through ambient noise. The flashing signal light is available in amber or red lens. The steady state beacon light is available in green or blue lens and provides assistance in finding the location of the safety fixture. The signaling system also features an auto reset/silence switch which can be used to silence the horn during an event while the signal light continues to flash and the water flows.

Bowl and Dust Cover

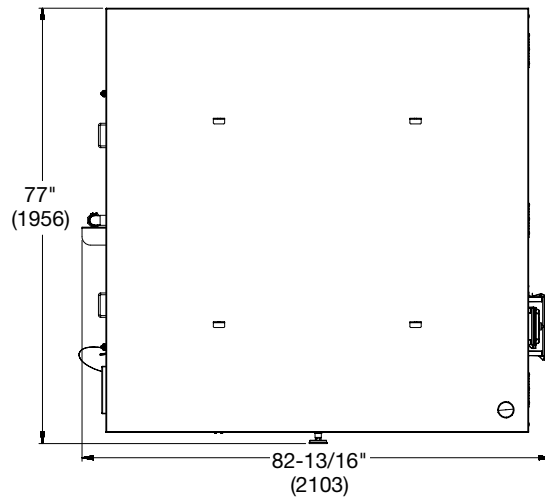
Optional bowl and dust cover is constructed of yellow impact-resistant plastic or Type 304 corrosion-resistant stainless steel.

Wireless Monitoring

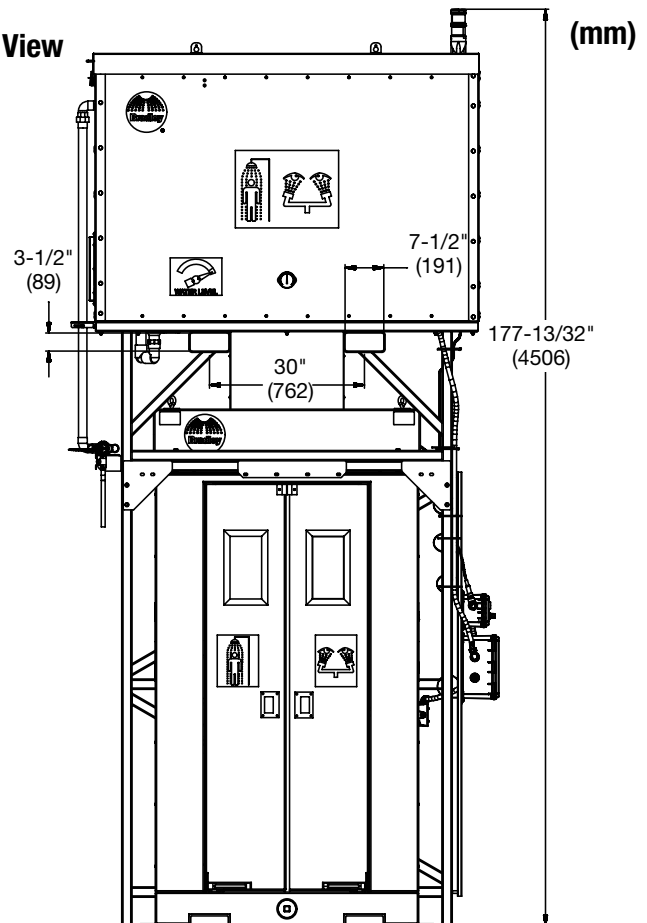
The wireless Monitoring option includes a transmitter and a receiver. A transmitter/receiver closes a contact that can be integrated into an alarm or building management system and provides a way to send a wireless signal to a remote location. The transmitter at the shower is battery powered.

- ☒ Customer to provide incoming power with circuit protection
- ☒ Only one electrical connection is required.

Top View



Front View



☒ Units are non-cancelable, non-refundable and non-returnable.



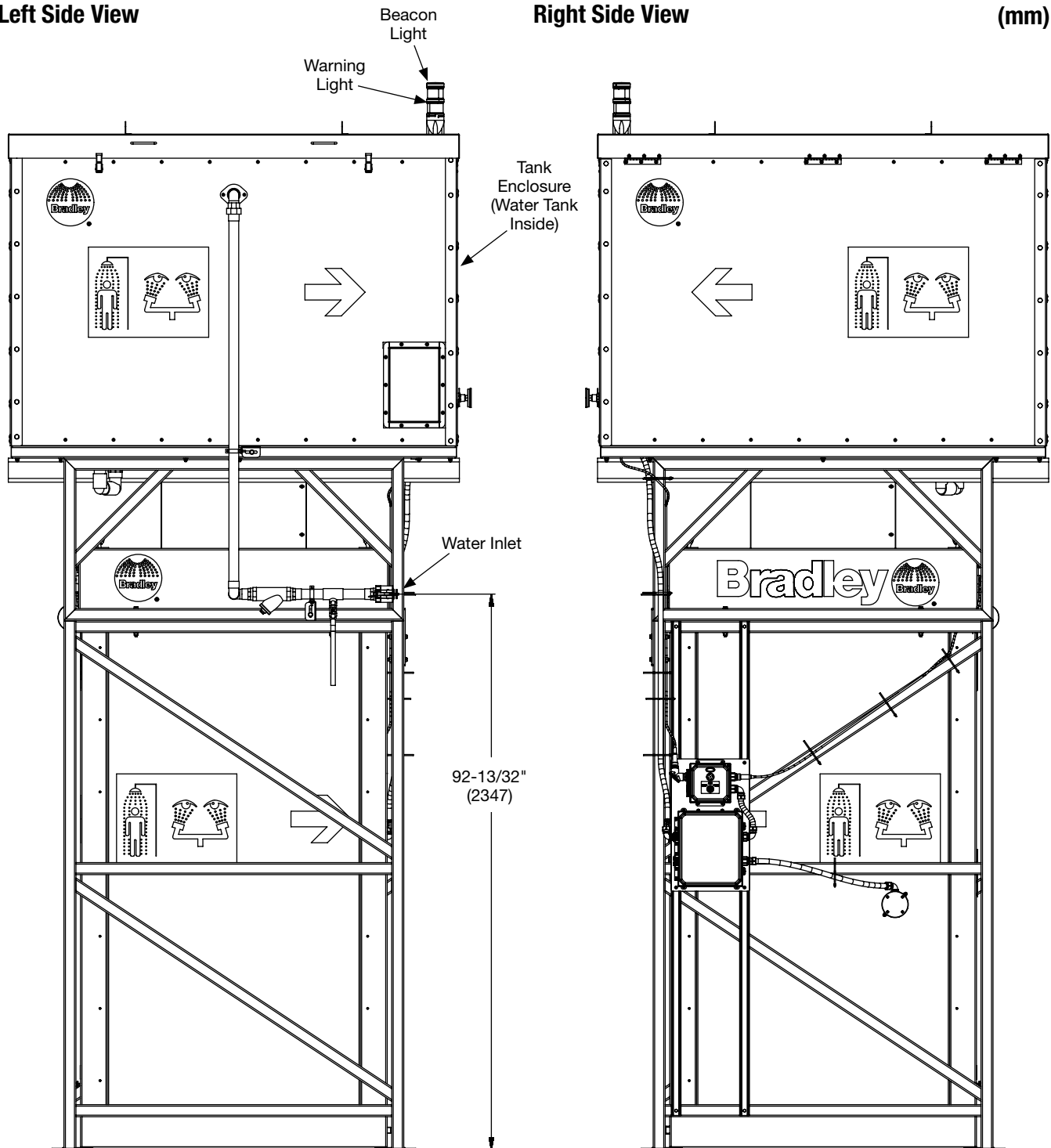
S19392

Enclosed Outdoor Gravity Fed Safety Shower

Left Side View

Right Side View

(mm)



**S19392****Enclosed Outdoor Gravity Fed Safety Shower****Model****S19392** Enclosed Safety Shower with Gravity Fed Water Tank**Selections (must select one from each category)****Electrical Class:****GA** General Area Classification**Supply Voltage:****V2** 208VAC, Single-Phase**V4** 240VAC, Single-Phase**V5** 480VAC, Single-Phase**Eye/Face Wash Supply Pipe ¹****PVC** PVC Pipe**CPP** Copper Pipe**Eye/Face Wash:****FW** Eye/Face Wash and Aluminum Yoke**F04** 304 SS Eye/Face Wash and 304 SS Yoke**Bowl and Cover:****PB** Plastic Bowl and No Cover**SB** 304SS Bowl and No Cover**PP** Plastic Bowl and Cover**B04** 304SS Bowl and Cover**P04** 304SS Bowl and Plastic Cover**0** No Bowl or Cover**Units are non-cancelable, non-refundable and non-returnable.****Ceiling Light:****LS** Light System**LM** Light with Motion Detector**Signal System (General Area Locations):****BGSA** Green Beacon/Amber Signal (Standard)**BGSR** Green Beacon/Red Signal**BBSA** Blue Beacon/Amber Signal**BBSR** Blue Beacon/Red Signal**0** None**Wireless Monitor:****WM** Remote Wireless Mounting ³**0** None¹ Material selection for the pipe between the water tank and the inlet of the eye/face wash assembly.² Battery powered at shower.**A signed submittal drawing is required. This submittal drawing will be provided upon receipt of order.****Job Name:****Location:****Revision Date:**

This is to acknowledge that the "End User" identified below has marked the boxes in the selection guide above to design an enclosure that will meet its site and specification requirements, and wishes to have Bradley custom-build that enclosure to its order, on the understanding that the order may not be canceled, the enclosure may not be returned and that no refund of any portion of the purchase price for the enclosure will be made (except under Bradley's warranty). It is also to acknowledge that the "Distributor" identified below is placing an order with Bradley for the enclosure, on the Terms and Conditions found on Bradley's website, at www.bradleycorp.com, again on the understanding that the order may not be canceled, the enclosure may not be returned and that no refund of any portion of the purchase price for the enclosure will be made (except under Bradley's warranty).

name of "End User" _____

by _____

title _____

date _____

name of "Distributor" _____

by _____

title _____

date _____

© 2023 Bradley