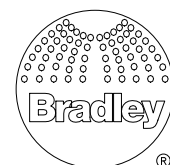


- AFTER DETACHING FROM SHIPPING PALLETS,
1. UNBOLT CROSSBAR FROM FRAME;
  2. MOVE THE SHELTER & FRAME OFF THE PALLET;
  3. MOVE THE TANK ENCLOSURE OFF THE OTHER PALLET;
  4. PLACE THE SHELTER & FRAME IN THEIR FINAL POSITIONS  
VERIFYING THE RELATIVE DISTANCES BETWEEN THE LEFT, BACK, AND  
RIGHT SIDES OF THE SHELTER TO THE FRAME;
  5. LIFT TANK ENCLOSURE ONTO TOP OF FRAME AND BOLT TOGETHER.
  6. RAISE THE CONNECTOR TO THE INTERIOR CEILING OF THE SHELTER  
AND FASTEN IN PLACE;
  7. ANCHOR THE FEET OF THE SHELTER & FRAME TO A SOLID FOUNDATION.

REFER TO INSTALLATION INSTRUCTIONS FOR ALL REQUIREMENTS.

DIMENSION: inches [mm]

**ENCLOSED OUTDOOR GRAVITY-FED SAFETY SHOWER, S19392  
WITH SELF-CONTAINED WATER TANK & TYPICAL ELECTRICAL  
CONTROLS FOR NON-HAZARDOUS LOCATIONS**



This print contains  
information that  
is PROPRIETARY.  
Disclosure of any  
information on this  
document cannot be  
made without written  
permission of  
Bradley Corporation

Approved for manufacturing

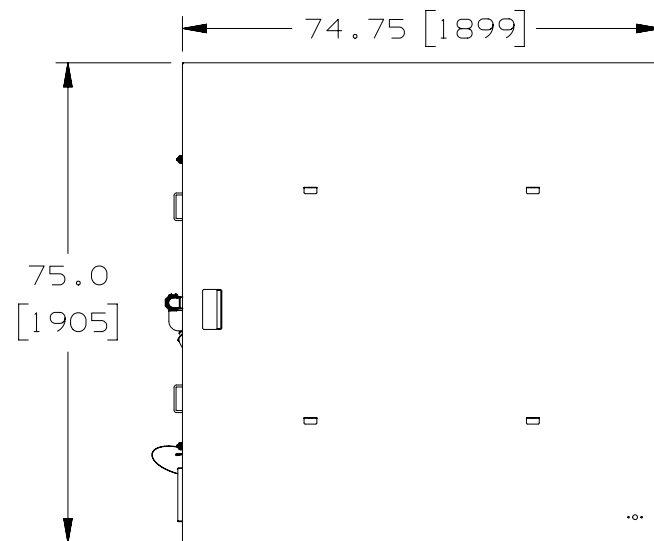
Signature \_\_\_\_\_ Date \_\_\_\_\_

Company \_\_\_\_\_ Title \_\_\_\_\_

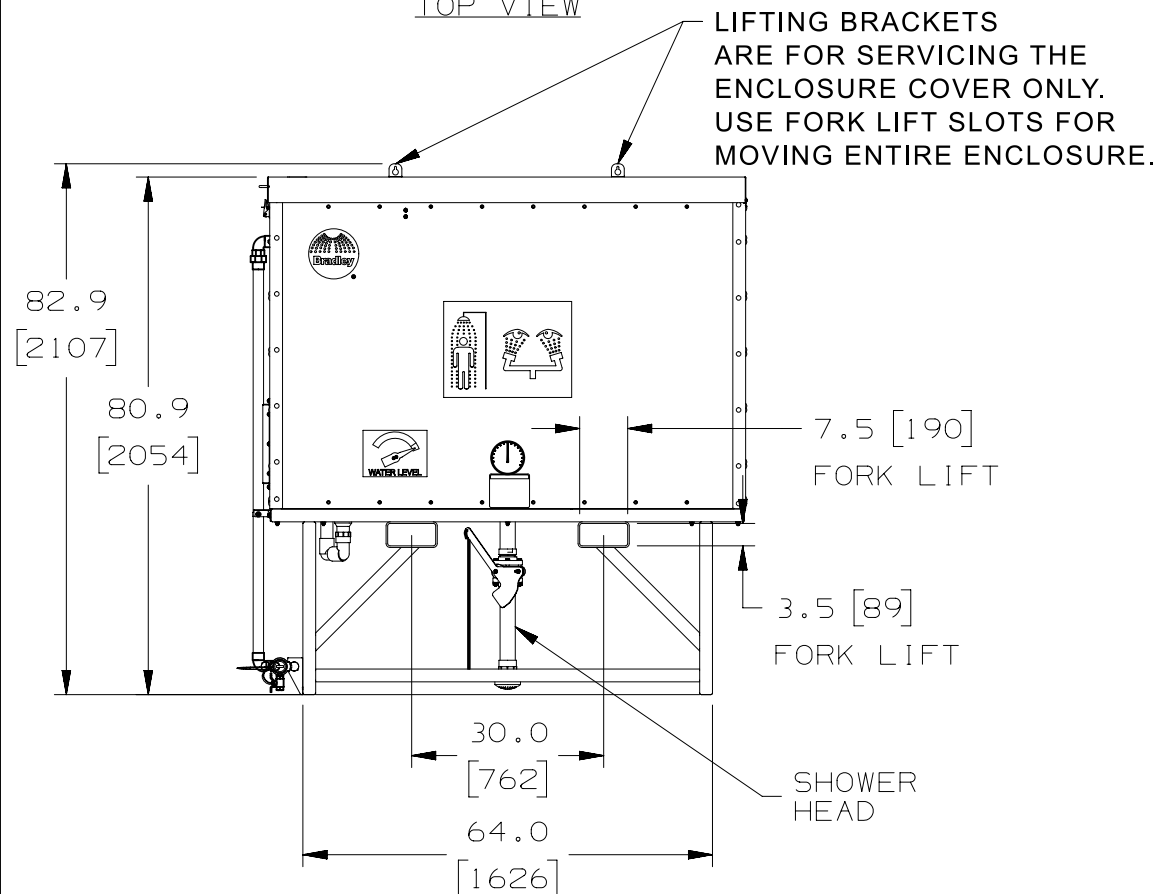
By LPH	Issued 03/05/20	Revised	Drawing No. <b>TECH DATA - S19392</b>	Page 1 of 2
-----------	--------------------	---------	--	----------------

# TANK ENCLOSURE MODULE

AS-SHIPPED, PRIOR TO INSTALLATION



TOP VIEW



FRONT VIEW

LIFTING BRACKETS ARE FOR SERVICING THE ENCLOSURE COVER ONLY. USE FORK LIFT SLOTS FOR MOVING ENTIRE ENCLOSURE.

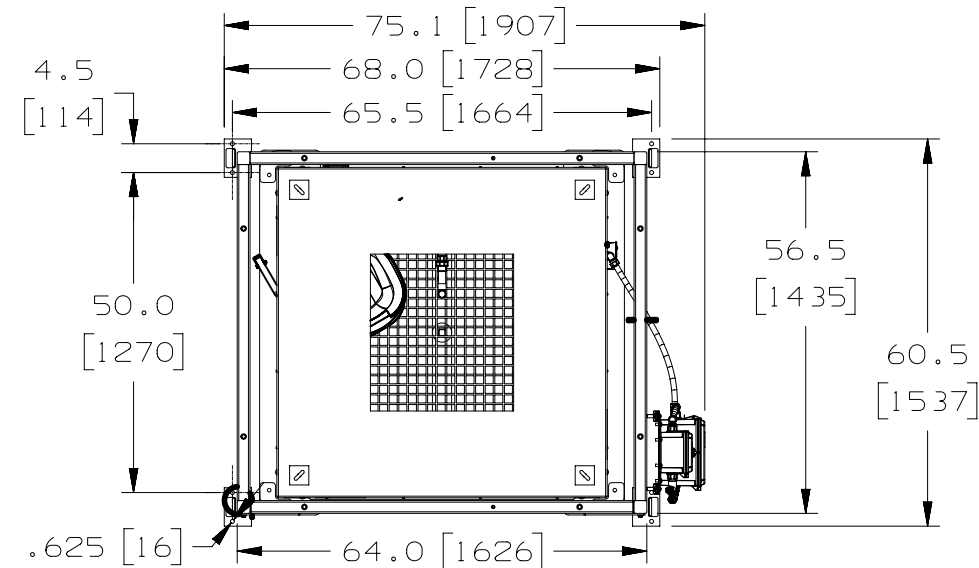
SHOWER HEAD

3.5 [89]  
FORK LIFT

7.5 [190]  
FORK LIFT

# LOWER FRAME MODULE

AS-SHIPPED, PRIOR TO INSTALLATION

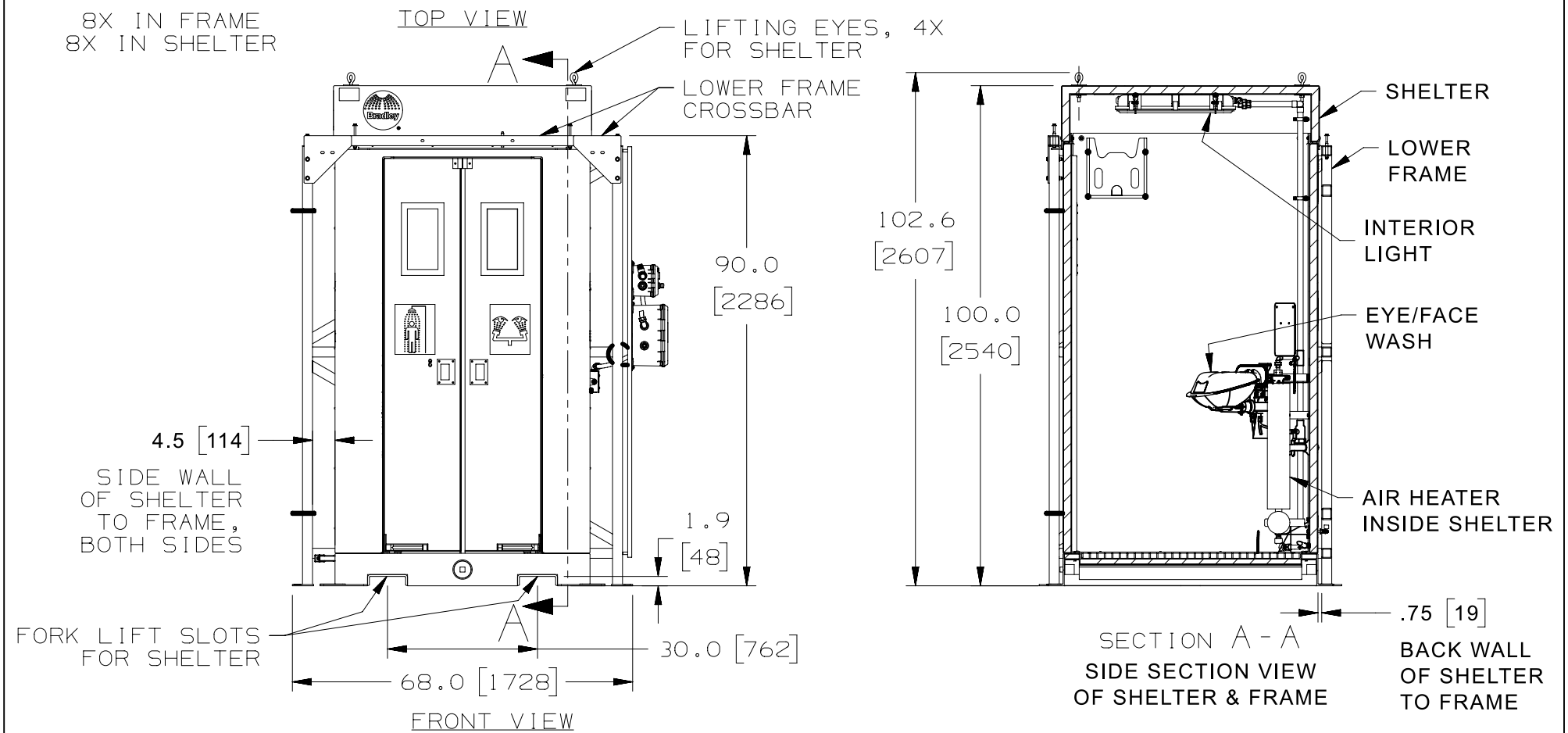


TOP VIEW

8X IN FRAME  
8X IN SHELTER

LIFTING EYES, 4X  
FOR SHELTER

LOWER FRAME  
CROSSBAR

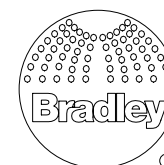


FRONT VIEW

SECTION A - A  
SIDE SECTION VIEW  
OF SHELTER & FRAME  
BACK WALL  
OF SHELTER  
TO FRAME

SOME ADDITIONAL FINAL ASSEMBLY OF CONDUIT, SHELTER CONNECTOR, AND FACEWASH PLUMBING IS REQUIRED BY INSTALLER. REFER TO INSTALLATION INSTRUCTIONS FOR ALL REQUIREMENTS.

## ENCLOSED OUTDOOR GRAVITY-FED SAFETY SHOWER, S19392 WITH SELF-CONTAINED WATER TANK & TYPICAL ELECTRICAL CONTROLS FOR NON-HAZARDOUS LOCATIONS



This print contains information that is PROPRIETARY. Disclosure of any information on this document cannot be made without written permission of Bradley Corporation

Approved for manufacturing

Signature \_\_\_\_\_ Date \_\_\_\_\_

Company \_\_\_\_\_ Title \_\_\_\_\_

By	Issued	Revised	Drawing	Page
LPH	03/05/20		No. <b>TECH DATA - S19392</b>	2 of 2

DIMENSION: inches [mm]