

Mercedes Benz Financial Services Operations Center, Fort Worth, TX / Photo: © Wade Griffith

The High Profile Series™ Frameworks ceiling system offers versatile, customizable designs for interior commercial applications.

FEATURES AND BENEFITS

- Beam Profile
 - 1-1/2" x 4-3/8" - 2" x 4" - 4" x 4"
 - 1-1/2" x 6-3/8" - 2" x 6"
 - 1-1/2" x 8-3/8" - 2" x 8"
 - 1-1/2" x 10"
 - 1-1/2" x 12"
- Note: Client specific shapes and finishes available
- Extruded aluminum beam configurations can be customized to create one-off ceiling designs
- Precision-cut straight and curved elements to create peaks, valleys, angles, walls & screens
- Seamless baffles up to 20 feet in length
- Integrated lighting options
- Versatile support options include threaded rods, Unistrut® support system or aircraft cables for lower visibility
- Patented locking mechanism

ATTRIBUTES



FIRE RATING:
CLASS A
PER ASTM E84
AND CAN/ULC-S102



SEISMIC RATING:
ZONES A, B, C, D, E, F



**CUSTOMIZATION
AVAILABLE**

LEED® v4

RECYCLED CONTENT up to 50%

- ✓ MR: Building Product Disclosure
- ✓ EQ: Low-Emitting Materials
- ✓ EQ: Indoor Air Quality Assessment

LEED® is a registered trademark of the
U.S. Green Building Council.

CERTIFICATIONS



**GREENGUARD:
GOLD CERTIFIED**



EPD AVAILABLE

HIGH PROFILES SERIES™ - FRAMEWORKS

COLORS AND FINISHES

A wide choice of colors and finishes as well as custom color matching are available upon request. See website for the most up to date information and to order samples. Colors are for illustration purposes only.

STANDARD PAINT COLORS

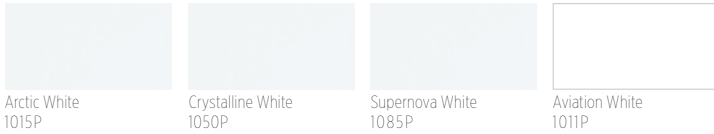


CUSTOM COLORS



WHITE FINISH OPTIONS

Powder-coat paint finish for Arctic White #1015P (Gloss 10-20); Crystalline White #1050P (Gloss 45-55); Supernova White #1085P (Gloss 80-90). Aviation White #1011P: Powder-coat paint finish offering - LRV 90 - 9% gloss finish.



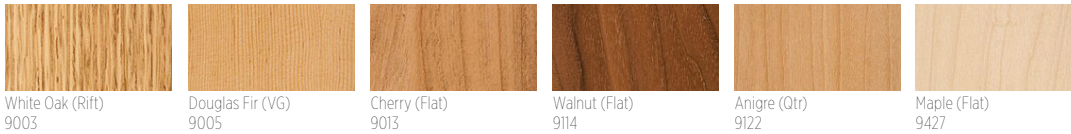
BLACK FINISH OPTIONS

Powder-coat paint finish for Starless Black #5000P (Matte); Raven Black #5030P (Gloss 25-35); Sable Black #5060P (Gloss 65-75); Wet Glass Black #5095P (Gloss 90-95)



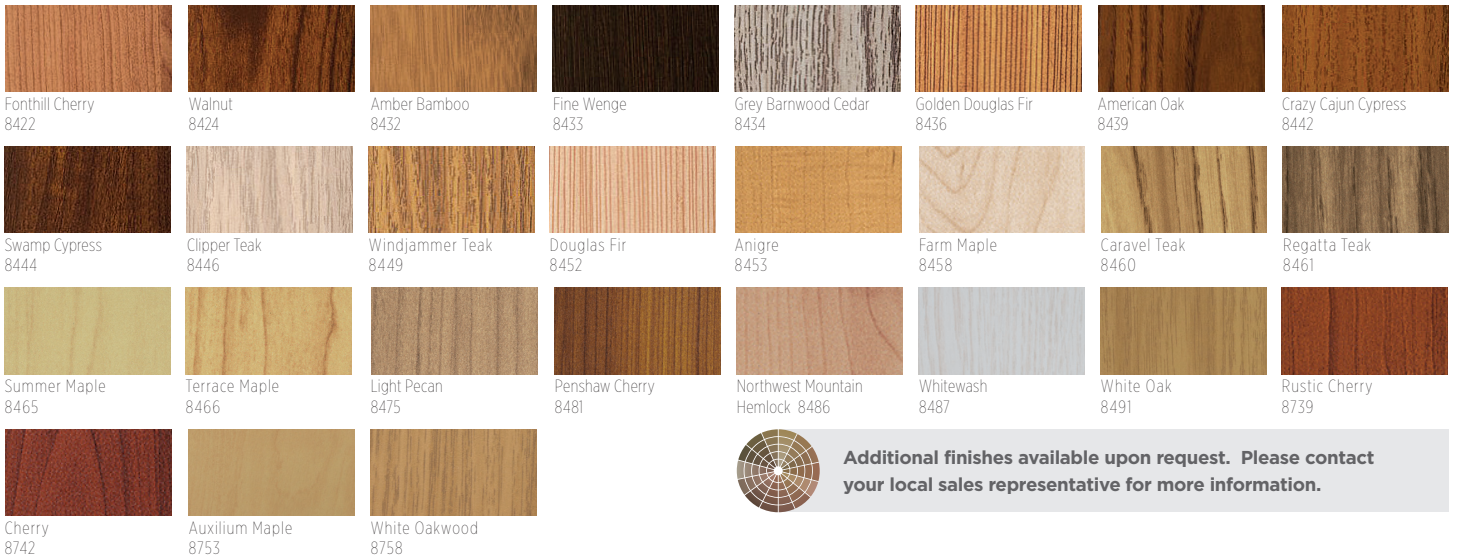
STANDARD WOOD VENEER OPTIONS

Real wood veneer (interior only). Formaldehyde-free, Class A composite panel.
Note: This is a small subset of veneers available. Please contact manufacturer for client-specific species and stains.



DECORATED (POWDER-COAT) WOOD-LOOK OPTIONS

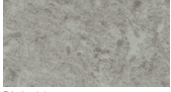
Powder-coat paint finish (interior and exterior). Formaldehyde-free, Class A composite panel.
This finish is recommended for exterior conditions.



HIGH PROFILES SERIES™ - FRAMEWORKS

DECORATED (POWDER-COAT) MASONRY OPTIONS

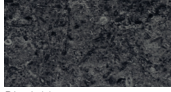
Powder-coat paint finish (interior and exterior). Formaldehyde-free, Class A composite panel. This finish is recommended for exterior conditions.



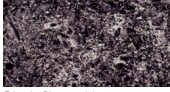
Plain Masonry
8603



Grey Masonry
8604



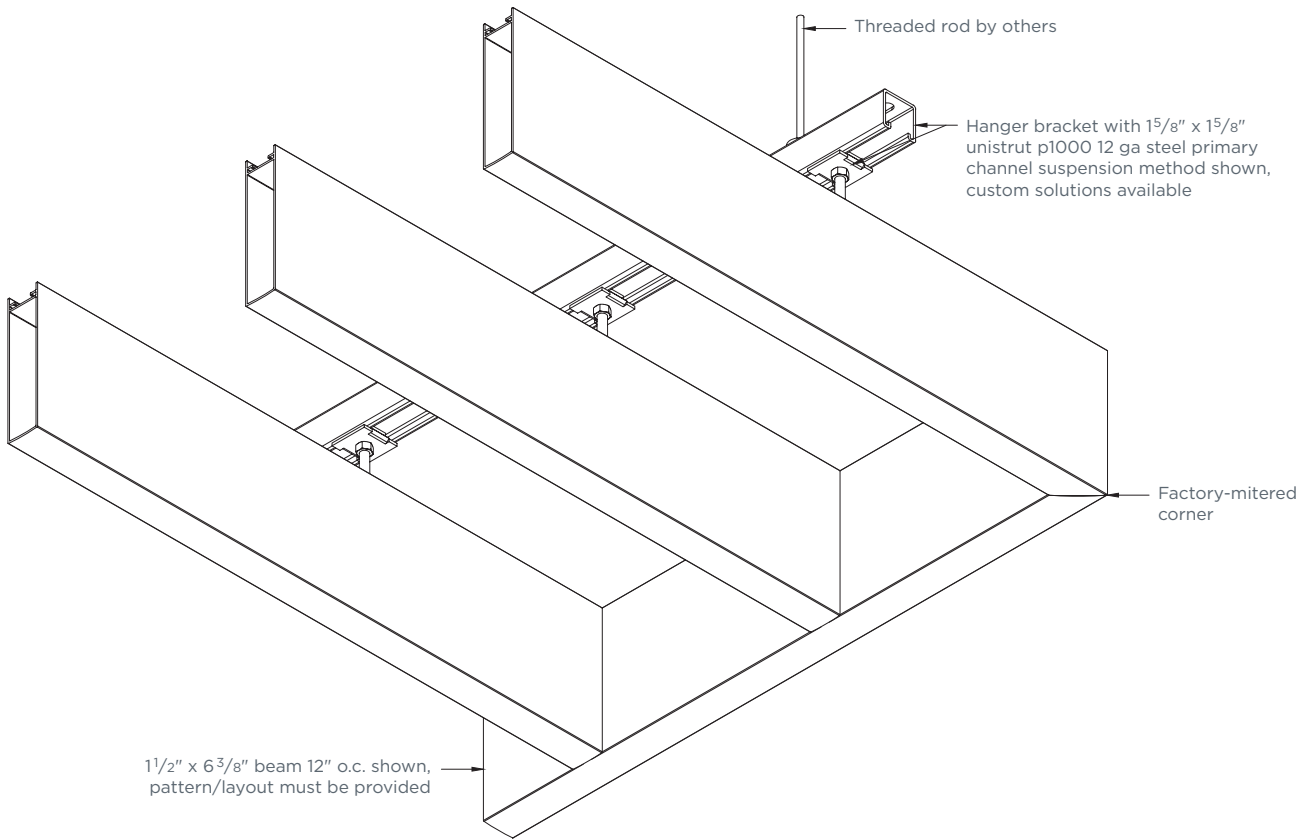
Black Masonry
8605



Black Cherry Masonry
8606

INSTALLATION EXAMPLES

Typical Isometrics



Additional options available for design flexibility, contact your local sales representative to get started.



Accenture Atlanta, GA / Photo: © Studio 66 LLC

PHYSICAL DATA

MATERIAL

Aluminum

WEIGHT

Varies 2.0 - 4.0 lbs./sq.ft.

FIRE RATING

Class A Fire Rated per ASTM E84

- Painted or anodized metal: Flame spread: ≤ 25 ,
Smoke ≤ 50

- Wood veneer on metal: Flame spread: ≤ 25 , Smoke ≤ 55
(for interior applications)

Class A Fire Rated per CAN/ULC-S102

- Painted or anodized metal: Flame spread: ≤ 25 ,
Smoke ≤ 50

SEISMIC RATING

Zones A,B,C,D,E,F

WIND LOAD

N/A

RECYCLED CONTENT

Up to 50%

LIGHT REFLECTANCE (LR) COEFFICIENT PER ASTM E1264 & ASTM E1477

- Cotton White: LR = 0.81

WARRANTY

1-year Limited Warranty.

Full warranty information can be found
at [certainteed.com/warranty](https://www.certainteed.com/warranty)



CertainTeed ARCHITECTURAL

METAL • WOOD • FELT • FIBERGLASS & MINERAL FIBER • GYPSUM • SUSPENSION & INTEGRATED SYSTEMS
20 Moores Road, Malvern, PA 19355 800-366-4327 [certainteed.com/architectural](https://www.certainteed.com/architectural)

