

SUBMITTAL SHEET

METALINX™

Project Name _____

Specification Section _____

Ceiling Type _____

SUBSTRATE:
STEEL

Material gauge to be determined by pattern type

SIZE

24" x 24"

PATTERNS

Woven-Wire Mesh

- ☐ W-01 Woven mesh, 1" square opening, 80% open area
- ☐ W-02 Woven mesh, 2" square opening, 89% open area

Welded-Wire Mesh

- ☐ W-03 Welded mesh, 3" square opening, 91% open area
- ☐ W-04 Welded mesh, 4" square opening, 92% open area
- ☐ W-05 Welded mesh, 2" x 1" rectangular opening, 84% open area
- ☐ W-06 Welded mesh, 3" x 1-1/2" rectangular opening, 73% open area

Expanded Metal Mesh

- ☐ E-01 Expanded Metal mesh, 1/4 #20 Standard, 45% open area
- ☐ E-02 Expanded Metal mesh, 1/2 #16 Standard, 66% open area
- ☐ E-03 Expanded Metal mesh, 3/16 #22 Standard, 61% open area

COLOR/FINISH

Paint # _____

EXPOSURE

☒ Interior Only

Shop Drawings required on all Metalinx™ projects.

To Contact Us:

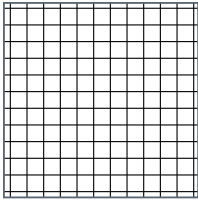
5015 Oakbrook Parkway, Suite 100
Norcross, GA 30093
phone: 800.366.4327
fax: 770.806.0214
www.certainteed.com/architectural

ARCHITECTURAL

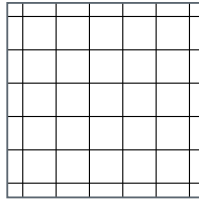
CertainTeed
SAINT-GOBAIN

PATTERNS

Woven-Wire Mesh

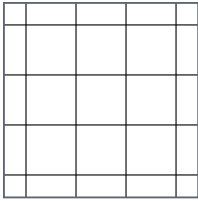


W-01 Pattern
1" Square Opening
Open area: 80%

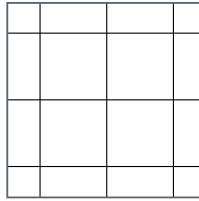


W-02 Pattern
2" Square Opening
Open area: 89%

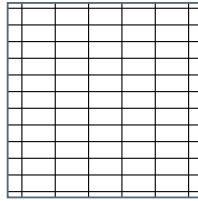
Welded-Wire Mesh



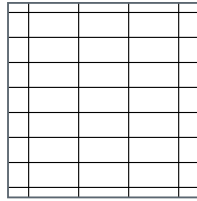
W-03 Pattern
3" Square Opening
Open area: 91%



W-04 Pattern
4" Square Opening
Open area: 92%

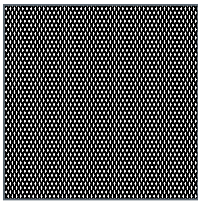


W-05 Pattern
2" x 1" Rectangular Opening
Open area: 84%

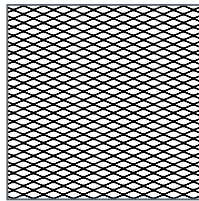


W-06 Pattern
3" x 1-1/2" Rectangular Opening
Open area: 73%

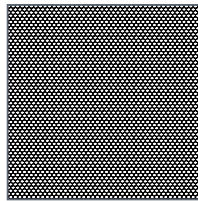
Expanded Metal Mesh



E-01 Pattern
1/4 #20 Standard
Open area: 45%



E-02 Pattern
1/2 #16 Standard
Open area: 66%



E-03 Pattern
3/16 #22 Standard
Open area: 61%

* includes T-grid hold down clips, 4 per panel

PHYSICAL DATA

Substrate: Steel

Warranty: 1 year Limited Warranty

Seismic rating: Zones A,B,C,D,E,F

Fire rating: N/A

- Material is non-combustible
- Melting point 2800°

Weight: Varies

Wind load: N/A

Recycled content: 25%

Light reflectance (LR) Coefficient per ASTM E1264 & ASTM E1477:

- Cotton White: LR = 0.81