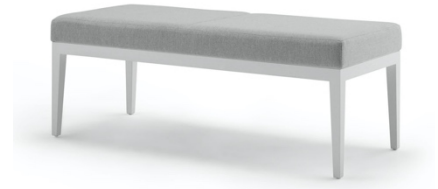


Livy Bench

A generous seat cushion forms the focal point of the Livy bench. The bench's cushion rests atop a solid wood base and slightly splayed, square legs.

Specifications

Bench in 2 lengths. Solid wood base, with double-dowel construction, and corner-blocked legs and rails. Legs have nylon glides. Catalyzed lacquer finish in all Cumberland standard and custom finishes. Upholstered seat with multi-density polyurethane foam wrapped in Dacron®. The 48" bench has one (1) slightly indented stitch detail across the depth, the 60" bench has 2 slightly indented stitch details across the depth.



Options – Specify:

Upholstery: COM/COL, Graded Fabric, and Elmo Leather program
Wood: Maple is standard. Walnut and White Oak are optional, add \$400 list per item.
Finishes: Available in any standard MP finish on Maple, any premium WL finish on Walnut, or any premium WO finish on White Oak. Cerused finishes on Oak are available for an additional charge of \$140 list per item. Custom finishes are also available.

Model	Description	Dimensions	YDS	SF	COM	COL	Fabric Grades				Leather		Weight
							1	2	3	4	S	B	
10-2331	Bench	48"w x 20"d x 17"h	2.00	32	1947	2142	2162	2259	2355	2488	3512	3851	75
10-2332	Bench	60"w x 20"d x 17"h	2.50	40	2315	2547	2584	2704	2825	2991	3917	4256	85

Bench



Updated: 08/12/2022 | 03/01/2021